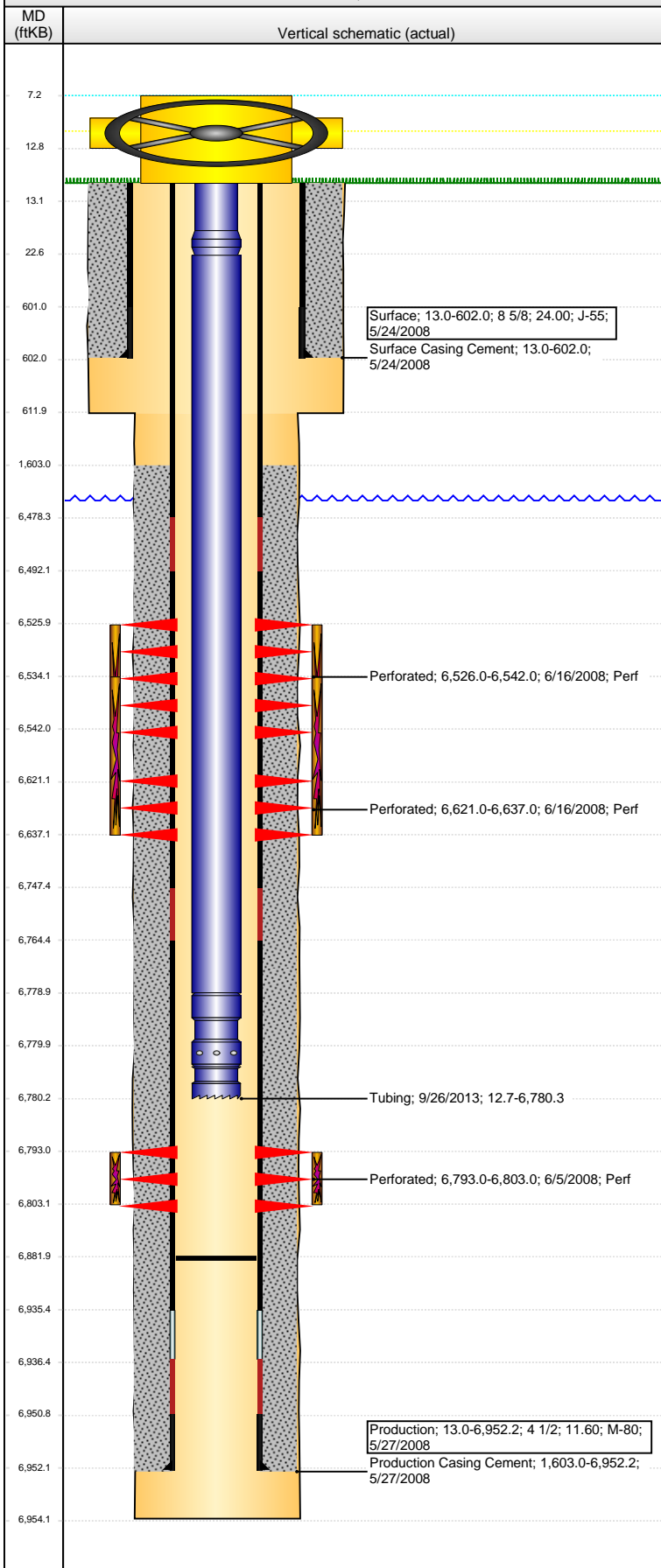


**Well Name: WELLS RANCH USX AA23-16**

VERTICAL - ORIGINAL HOLE, 3/14/2016 10:34:29 AM

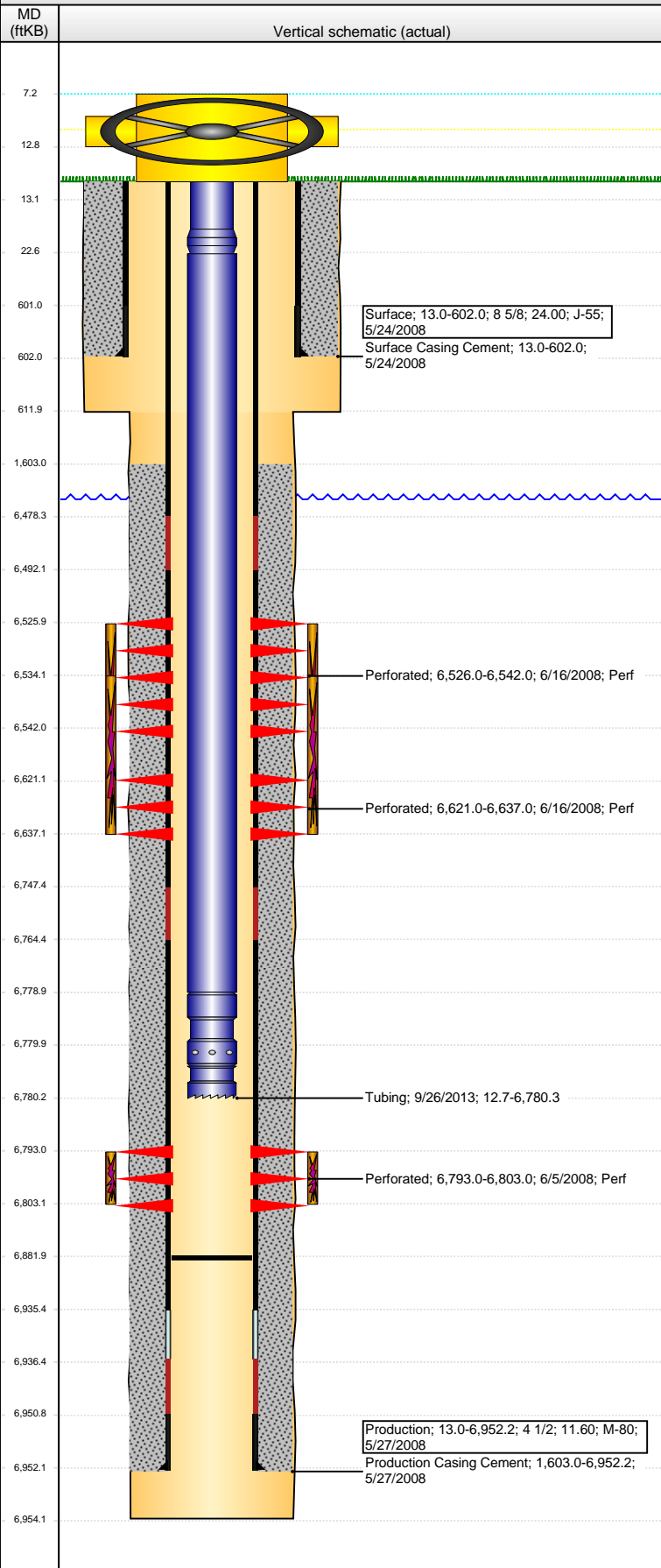


Well Header									
API 05-123-25802		Business Unit DJ BASIN		District 15		Well Config VERTICAL			
Original KB Elevation (ft) 4,832		KB - GL / MSL (ftKB) 13.00		Spud Date 5/24/2008		P & A Date			
Comment									
Directions To Well WCR 68 & WCR 67, EAST .2, SOUTH 1.8, EAST 1.2, NORTH 1.0, SOUTHEAST 0.2 INTO.									
Congressional Location									
Quarter 1	Quarter 2	Quarter 3	Quarter 4	Section	Township	Twnshp N...	Range	Rng E/W Dir	
		SE	SE	23	6 N		63	W	
Bottom Hole Location									
North-South Distance (ft)		From N or S Line		East-West Distance (ft)			From E or W Line		
Plug Back Total Depths									
Date		Depth (ftKB)		Method		Com			
5/27/2008		6,936.3		CASING TALLY		DRILLED UP 2 CIFT'S AND PUSHED TO 6845'			
6/26/2008		6,845.0		TUBING TALLY					
6/18/2013		6,882.0		TAG					
Wellbore Sections									
Section Des			Size (in)		Act Top, MD (ftKB)		Act Btm, MD (ftKB)		
SURFACE			12 1/4		13.0		612.0		
PRODUCTION			7 7/8		612.0		6,954.0		
Zone Statuses									
Zone Name		Status Date		Status	Fluid Type	Job		Prod Method	
CODELL		6/19/2008		PR		DRILLING/CO...			
NIOBRARA		6/19/2008		PR		DRILLING/CO...			
Casing Strings									
Surface, 602.0ftKB									
Casing Description		Run Date		OD (in)	Wt/Len (l...	Grade	Top, MD (ft...		MD (ftKB)
Surface		5/24/2008		8 5/8	24.00	J-55	13.0		602.0
Production, 6,952.2ftKB									
Casing Description		Run Date		OD (in)	Wt/Len (l...	Grade	Top, MD (ft...		MD (ftKB)
Production		5/27/2008		4 1/2	11.60	M-80	13.0		6,952.2
Cement									
Description					Top Depth (ftKB)		Bottom Depth (ftKB)		
Surface Casing Cement					13.0		602.0		
Description					Top Depth (ftKB)		Bottom Depth (ftKB)		
Production Casing Cement					1,603.0		6,952.2		
Tubing Strings									
Tubing Description		Run Date		String...	ID (in)	Wt (lb/ft)	Grade	Len (ft)	
Tubing - Production		6/27/2008		2 3/8	1.995	4.70	J-55	6,771.25	
Tubing Description		Run Date		String...	ID (in)	Wt (lb/ft)	Grade	Len (ft)	
Tubing - Production		10/26/2011		2 3/8	1.995	4.70	J-55	6,771.67	
Tubing Description		Run Date		String...	ID (in)	Wt (lb/ft)	Grade	Len (ft)	
Tubing		9/26/2013		2 3/8	1.995	4.70	J-55	6,767.58	
Tubing Components									
Item Des		OD (in)	Wt (lb/ft)	Grade	Jts	Len (ft)		Btm (ftKB)	Btm (TVD) (ftKB)
Pup Joint		2 3/8	4.70	J-55	1	10.10		22.8	
EUE 8rd Tubing		2 3/8	4.70	J-55	218	6,755.98		6,778.8	
Pump Seating Nipple		2 3/8	1.10	J	1	1.20		6,780.0	
Notched collar		2 3/8	4.70	J-55	1	0.30		6,780.3	
Perforation Data									
Zone		Bnch/St g	Entered Shot Total	Top (ftKB)		Btm (ftKB)		Date	
NIOBRARA, ORIGINAL HOLE		A	64	6,526.00		6,542.00		6/16/2008	
NIOBRARA, ORIGINAL HOLE		B	64	6,621.00		6,637.00		6/16/2008	
CODELL, ORIGINAL HOLE			40	6,793.00		6,803.00		6/5/2008	

**Well Name: WELLS RANCH USX AA23-16**

VERTICAL - ORIGINAL HOLE, 3/14/2016 10:34:32 AM

## Stimulations & Treatments



Date 6/16/2008	Zone CODELL, ORIGINAL HOLE	Primary Job Type DRILLING/COMPLETION - ORIGINAL
-------------------	-------------------------------	--

Technical Result Success	Tech Result Details According to Plan	Tech Result Note
-----------------------------	--	------------------

Comment  
ISIP = 2828 PSI, 5-MIN = 2586 PSI. 20 OF 40 PERFS OPEN, 280 NWB FRICTION, 132 PSI PERF FRICTION, AND 673 PSI TOTAL FRICTION. THE TREATMENT EXHIBITED A FLAT PRESSURE RESPONSE. POST JOB ISIP = 3051 PSI, 5-MIN = 2977 PSI. WIRELINE ISSUES WITH GETTING PLUG TO MOVE. COULDN'T PULL PLUG UPWARDS AFTER 2300' AND PLUG WOULD HANG UP ON ALMOST EVERY COLLAR. THE ONLY MOTION WAS TO WORK THE PLUG DOWNWARDS. FINALLY, THE PLUG WAS SET LOGGING THE COLLARS DOWNWARDS FROM SHORT JOINT AND SETTING THE PLUG AT 6690'. PRESSURE TEST OF PLUG SHOWED FAILURE. 2ND PLUG WAS RAN AND SET AT 6667' W/O ISSUE.

Date 6/16/2008	Zone NIOBRARA, ORIGINAL HOLE	Primary Job Type DRILLING/COMPLETION - ORIGINAL
-------------------	---------------------------------	--

Technical Result Success	Tech Result Details According to Plan	Tech Result Note
-----------------------------	--	------------------

Comment  
SLICKWATER PAD- ISIP (210 BBL) = 2944 PSI. SD 13 MINUTES WITH 7 BBLS OF ACID FLUSHED WITH DECK ENGINE ON BLENDER'S FILTER BEING PLUGGED. TREATMENT EXHIBITED A RELATIVELY FLAT PRESSURE RESPONSE. POST ISIP = 3205 PSI, 5-MIN = 3091 PSI. TURN ON IN 17 MINUTES 2950 PSI.

## Other In Hole

Run Date	Des	OD (in)	Top (ftKB)	Btm (ftKB)

## Logs

Date	Type	Top, MD (ftKB)	Btm, MD (ftKB)
5/27/2008	Caliper/Comp. Density/Neutron/GR/SP/ML	2,740.0	6,962.0
5/27/2008	DIL/GR/SP/Caliper	602.0	6,962.0
6/3/2008	CBL/CCL/GR	1,500.0	6,901.0
3/21/2013	GYRO	13.0	6,750.0