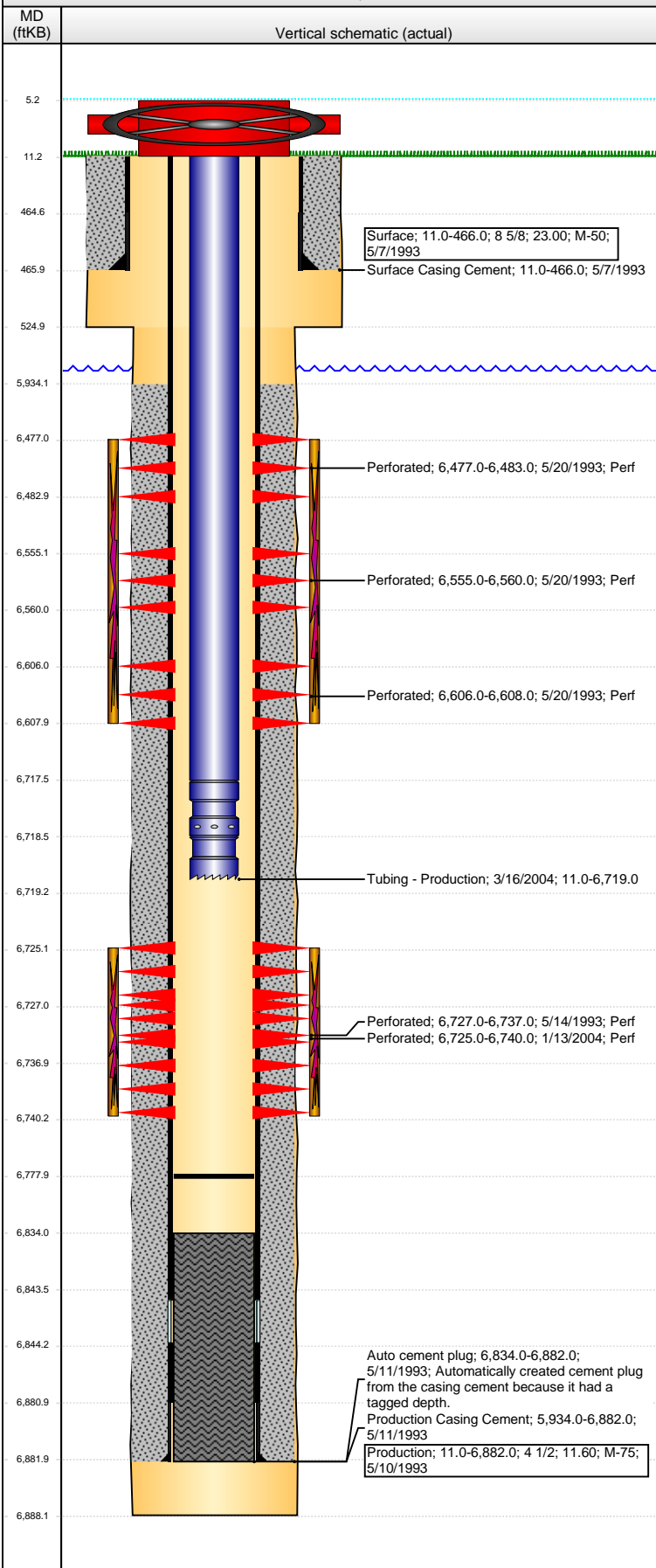


**Well Name: STINAR 14-08**

VERTICAL - ORIGINAL HOLE, 4/26/2016 1:48:24 PM



<b>Well Header</b>			
API	Business Unit	District	Well Config
05-123-16992	DJ BASIN	15	VERTICAL
Original KB Elevation (ft)	KB - GL / MSL (ftKB)	Spud Date	P & A Date
4,650	11.00	5/6/1993	

Comment

Directions To Well

<b>Congressional Location</b>								
Quarter 1	Quarter 2	Quarter 3	Quarter 4	Section	Township	Twncshp N...	Range	Rng E/W Dir
		SE	NE	14	4	N	64	W

<b>Bottom Hole Location</b>			
North-South Distance (ft)	From N or S Line	East-West Distance (ft)	From E or W Line

<b>Plug Back Total Depths</b>			
Date	Depth (ftKB)	Method	Com
5/10/1993	6,843.6	CASING TALLY	TOP OF LATCH DOWN PLATE
5/14/1993	6,834.0	CASED HOLE LOG	DEPTH LOGGER ON CBL
3/16/2004	6,778.0	TAG	TAGGED FILL

<b>Wellbore Sections</b>			
Section Des	Size (in)	Act Top, MD (ftKB)	Act Btm, MD (ftKB)
SURFACE	12 1/4	11.0	525.0
PRODUCTION	7 7/8	525.0	6,888.0

<b>Zone Statuses</b>					
Zone Name	Status Date	Status	Fluid Type	Job	Prod Method
CODELL	5/27/1993	PR		DRILLING/CO...	
CODELL	1/21/2004	PR		RE-FRAC, 1/12...	
NIOBRARA	5/27/1993	PR		DRILLING/CO...	

<b>Casing Strings</b>						
<b>Surface, 466.0ftKB</b>						
Casing Description	Run Date	OD (in)	Wt/Len (L...)	Grade	Top, MD (ft...)	MD (ftKB)
Surface	5/7/1993	8 5/8	23.00	M-50	11.0	466.0

<b>Production, 6,882.0ftKB</b>						
Casing Description	Run Date	OD (in)	Wt/Len (L...)	Grade	Top, MD (ft...)	MD (ftKB)
Production	5/10/1993	4 1/2	11.60	M-75	11.0	6,882.0

<b>Cement</b>		
Description	Top Depth (ftKB)	Bottom Depth (ftKB)
Surface Casing Cement	11.0	466.0
Description	Top Depth (ftKB)	Bottom Depth (ftKB)
Production Casing Cement	5,934.0	6,882.0

<b>Tubing Strings</b>							
Tubing Description	Run Date	String...	ID (in)	Wt (lb/ft)	Grade	Len (ft)	Set De...
Tubing - Production	3/16/2004	2 3/8	1.995	4.70	J-55	6,708.00	

<b>Tubing Components</b>							
Item Des	OD (in)	Wt (lb/ft)	Grade	Jts	Len (ft)	Btm (ftKB)	Btm (TVD) (ftKB)
EUE 8rd Tubing	2 3/8	4.70	J-55	216	6,706.50	6,717.5	
Pump Seating Nipple	2 3/8				1.00	6,718.5	
Notched collar	2 3/8				0.50	6,719.0	

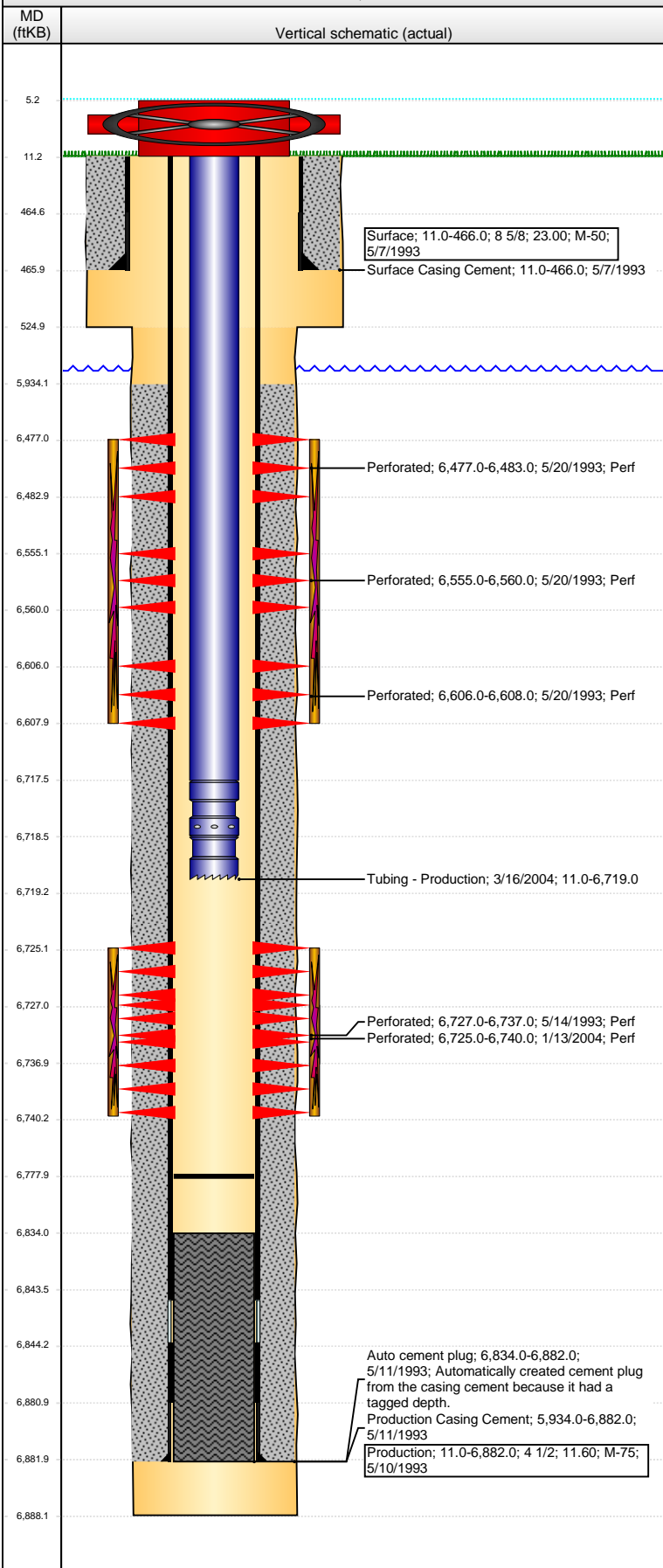
<b>Perforation Data</b>					
Zone	Bnch/St g	Entered Shot Total	Top (ftKB)	Btm (ftKB)	Date
NIOBRARA, ORIGINAL HOLE	A	8	6,477.00	6,483.00	5/20/1993
NIOBRARA, ORIGINAL HOLE	B	12	6,555.00	6,560.00	5/20/1993
NIOBRARA, ORIGINAL HOLE	C	4	6,606.00	6,608.00	5/20/1993
CODELL, ORIGINAL HOLE		60	6,725.00	6,740.00	1/13/2004
CODELL, ORIGINAL HOLE		20	6,727.00	6,737.00	5/14/1993

<b>Stimulations &amp; Treatments</b>		
Date	Zone	Primary Job Type
5/18/1993	CODELL, ORIGINAL HOLE	DRILLING/COMPLETION - ORIGINAL
Technical Result	Tech Result Details	Tech Result Note

Comment

**Well Name: STINAR 14-08**

VERTICAL - ORIGINAL HOLE, 4/26/2016 1:48:26 PM



Stimulations & Treatments			
Date	Zone	Primary Job Type	
5/21/1993	NIOBRARA, ORIGINAL HOLE	DRILLING/COMPLETION - ORIGINAL	
Technical Result		Tech Result Details	Tech Result Note
Comment			
Date	Zone	Primary Job Type	
1/20/2004	CODELL, ORIGINAL HOLE	RE-FRAC	
Technical Result		Tech Result Details	Tech Result Note
Comment			
Other In Hole			
Run Date	Des	OD (in)	Top (ftKB)
Logs			
Date	Type	Top, MD (ftKB)	Btm, MD (ftKB)
5/10/1993	COMPENSATED DENSITY	4,150.0	6,884.0
5/10/1993	INDUCTION	471.0	6,886.0
5/14/1993	CEMENT BOND	5,700.0	6,834.0
4/25/2016	GYRO	0.0	6,650.0