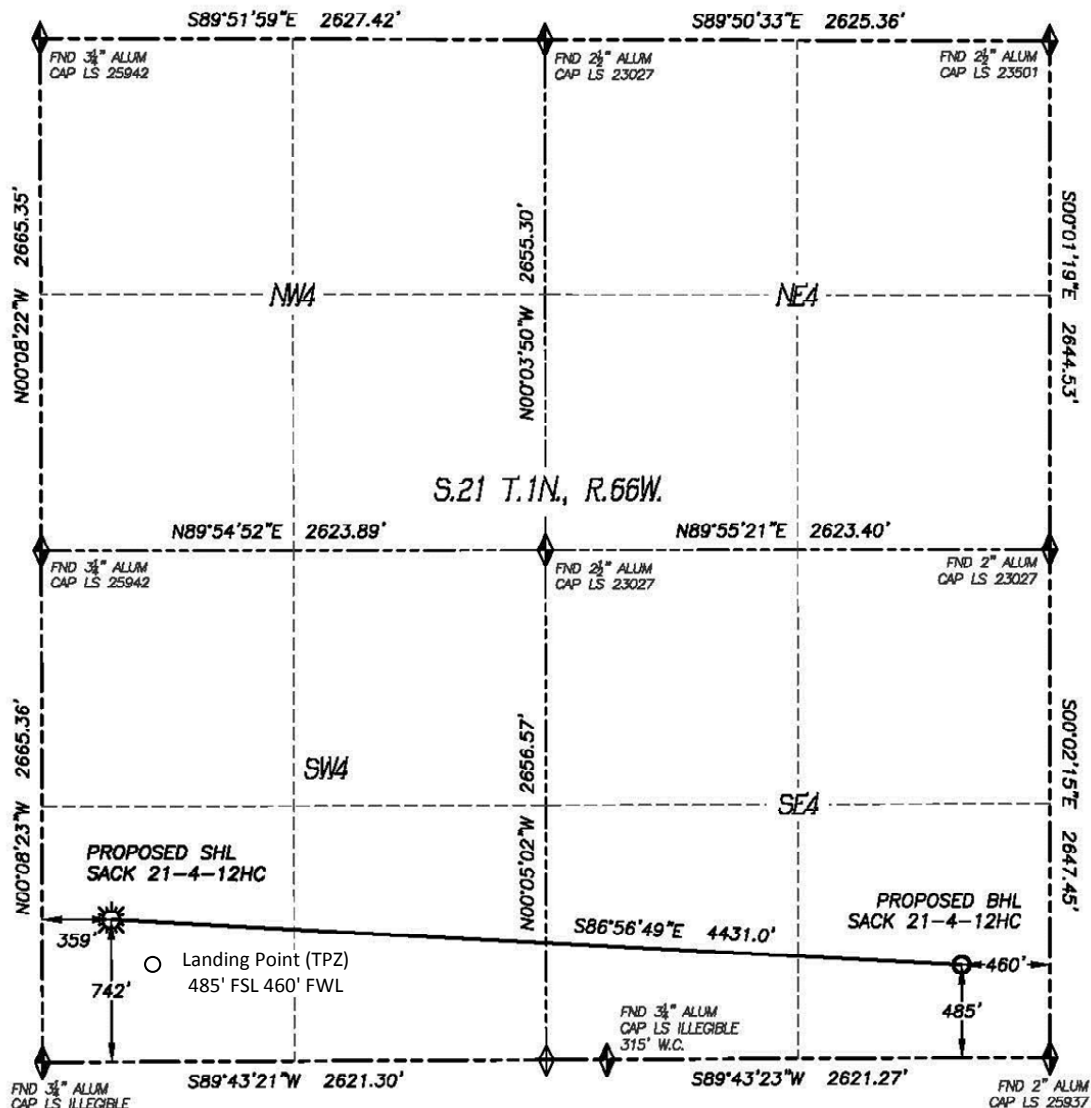


WELL LOCATION CERTIFICATE

SACK 21-4-12HC

SECTION: 21
TOWNSHIP: 1N
RANGE: 66W



0 500 1000
SCALE: 1" = 1000'

LEGEND

- ◆ FOUND MONUMENT AS DESCRIBED
- ☀ PROPOSED WELL
- EXISTING WELL
- BOTTOM HOLE
- ABANDONED WELL
- ◆ CALCULATED POSITION

IN ACCORDANCE WITH A REQUEST FROM WARD PETROLEUM CORP., DALEY LAND SURVEYING, INC. HAS DETERMINED THE SURFACE LOCATION OF THE SACK 21-4-12HC WELL TO BE 742' FSL, 359' FWL, AND THE BOTTOM HOLE LOCATION TO BE 485' FSL, 460' FWL, AS MEASURED AT NINETY (90) DEGREES FROM THE SECTION LINES OF SECTION 21, TOWNSHIP 1 NORTH, RANGE 66 WEST, OF THE 6TH PRINCIPAL MERIDIAN, WELD COUNTY, COLORADO.

I HEREBY STATE THAT THIS WELL LOCATION CERTIFICATE WAS PREPARED BY ME OR UNDER MY DIRECT SUPERVISION, THAT THE WORK WAS COMPLETED ON 2/8/2016 FOR AND ON BEHALF OF WARD PETROLEUM CORP., AND THAT THIS MAP DOES NOT REPRESENT A BOUNDARY SURVEY, IT IS NOT A LAND SURVEY PLAT OR AN IMPROVEMENT SURVEY PLAT AND IT IS NOT TO BE RELIED UPON FOR THE ESTABLISHMENT OF FENCE, BUILDING OR OTHER FUTURE IMPROVEMENT LINES.

NOTES:

- BEARINGS FOR THIS MAP ARE ASSUMED AND BASED UPON GPS OBSERVATIONS MADE BETWEEN MONUMENTS LOCATED AT THE SOUTHWEST CORNER AND WEST QUARTER CORNER OF SECTION 21, T.1N., R.66W.
- HORIZONTAL DATUM IS NAD83.
- VERTICAL DATUM IS NAVD88 AND ORIGINATES FROM THE LOCAL C.O.R.S. NETWORK, UTILIZING THE GEOID12A MODEL.
- SEE LOCATION DRAWING FOR VISIBLE IMPROVEMENTS WITHIN 500' OF PROPOSED DISTURBED AREA.
- SURFACE USE: AGRICULTURAL.
- INST. OPERATOR: SCOTT ESTABROOKS.

NEAREST CULTURAL ITEMS:

BUILDING: 637'± SW
BUILDING UNIT: 528'± SW
HIGH OCC. BLD. UNIT: 5280'±
DES. OUTSIDE ACTIVITY AREA: 5280'±
PUBLIC ROAD: 350'± W
ABOVE GROUND UTILITY: 339'± W
RAILROAD: 5280'±
PROPERTY LINE: 359'± W

NAD 83 LATITUDE AND LONGITUDE

SURFACE LOCATION:

LATITUDE: N40.03147°
LONGITUDE: W104.79018°
ELEV: 4958'
PDOP: 1.1
QTR/QTR: SW4/SW4

BOTTOM HOLE:

LATITUDE: N40.03083°
LONGITUDE: W104.77439°
Landing Point (TPZ)
485' FSL 460' FWL
(added by Operator 04/12/2016)

FOR AND ON BEHALF OF
DALEY LAND SURVEYING, INC.,
Robert Daley, PLS 35587

SHEET 1 OF 1

Drawing Date: 2/15/16