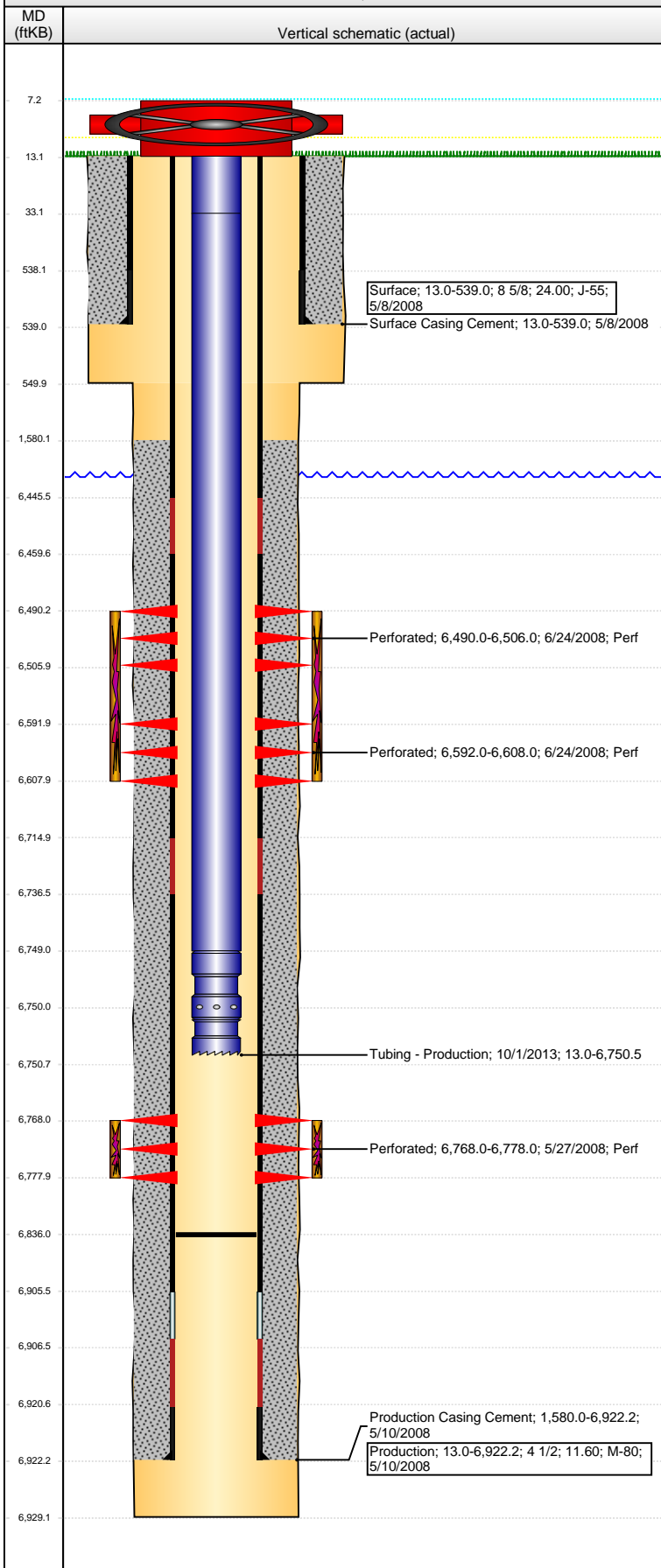


Well Name: WELLS RANCH USX AA23-02

VERTICAL - ORIGINAL HOLE, 3/10/2016 4:03:25 PM



Well Header								
API 05-123-25803		Business Unit DJ BASIN		District 15		Well Config VERTICAL		
Original KB Elevation (ft) 4,792		KB - GL / MSL (ftKB) 13.00		Spud Date 5/7/2008		P & A Date		
Comment								
Directions To Well WCR 68 & WCR 67, EAST 0.2, SOUTH 1.8, EAST .1.2, NORTH 1.7 INTO.								
Congressional Location								
Quarter 1	Quarter 2	Quarter 3 NW	Quarter 4 NE	Section 23	Township 6 N	Twnshp N...	Range 63	Rng E/W Dir W
Bottom Hole Location								
North-South Distance (ft)		From N or S Line		East-West Distance (ft)		From E or W Line		
Plug Back Total Depths								
Date	Depth (ftKB)	Method			Com			
5/10/2008	6,906.4	CASING TALLY						
6/27/2008	6,878.0	TUBING TALLY						
6/25/2013	6,845.0	TAG						
9/30/2013	6,836.0	TAG						
Wellbore Sections								
Section Des			Size (in)		Act Top, MD (ftKB)		Act Btm, MD (ftKB)	
SURFACE			12 1/4		13.0		550.0	
PRODUCTION			7 7/8		550.0		6,929.0	
Zone Statuses								
Zone Name	Status Date	Status	Fluid Type	Job	Prod Method			
CODELL	7/14/2008	PR		DRILLING/CO...				
NIOBRARA	7/14/2008	PR		DRILLING/CO...				
Casing Strings								
Surface, 539.0ftKB								
Casing Description		Run Date	OD (in)	Wt/Len (l...	Grade	Top, MD (ft...	MD (ftKB)	
Surface		5/8/2008	8 5/8	24.00	J-55	13.0	539.0	
Production, 6,922.2ftKB								
Casing Description		Run Date	OD (in)	Wt/Len (l...	Grade	Top, MD (ft...	MD (ftKB)	
Production		5/10/2008	4 1/2	11.60	M-80	13.0	6,922.2	
Cement								
Description					Top Depth (ftKB)		Bottom Depth (ftKB)	
Surface Casing Cement					13.0		539.0	
Description					Top Depth (ftKB)		Bottom Depth (ftKB)	
Production Casing Cement					1,580.0		6,922.2	
Tubing Strings								
Tubing Description		Run Date	String...	ID (in)	Wt (lb/ft)	Grade	Len (ft)	Set De...
Tubing - Production		6/30/2008	2 3/8	1.995	4.70	J-55	6,741.93	
Tubing Description		Run Date	String...	ID (in)	Wt (lb/ft)	Grade	Len (ft)	Set De...
Tubing - Production		10/1/2013	2 3/8	1.995	4.70	J-55	6,737.54	
Tubing Components								
Item Des		OD (in)	Wt (lb/ft)	Grade	Jts	Len (ft)	Btm (ftKB)	Btm (TVD) (ftKB)
Pup Joint		2 3/8	4.70	J-55	2	20.00	33.0	
Tubing		2 3/8	4.70	J-55	217	6,715.94	6,748.9	
Pump Seating Nipple		2 3/8	1.10		1	1.20	6,750.1	
Notched collar		2 3/8			1	0.40	6,750.5	
Perforation Data								
Zone		Bnch/St g	Entered Shot Total	Top (ftKB)		Btm (ftKB)		Date
NIOBRARA, ORIGINAL HOLE		A	64	6,490.00		6,506.00		6/24/2008
NIOBRARA, ORIGINAL HOLE		B	64	6,592.00		6,608.00		6/24/2008
CODELL, ORIGINAL HOLE			40	6,768.00		6,778.00		5/27/2008

Well Name: WELLS RANCH USX AA23-02

VERTICAL - ORIGINAL HOLE, 3/10/2016 4:03:27 PM

Stimulations & Treatments

Date	Zone	Primary Job Type
6/24/2008	CODELL, ORIGINAL HOLE	DRILLING/COMPLETION - ORIGINAL

Technical Result	Tech Result Details	Tech Result Note
Success	According to Plan	

Comment
PRE-ISIP = 2975 PSI, 5-MIN = 2660 PSI. 14 OF 40 PERFS OPEN, 312 NWB FRICTION, 185 PSI PERF FRICTION, AND 758 PSI TOTAL FRICTION. POST JOB ISIP = 3231 PSI, 5-MIN = 3080 PSI.

Date	Zone	Primary Job Type
6/24/2008	NIOBRARA, ORIGINAL HOLE	DRILLING/COMPLETION - ORIGINAL

Technical Result	Tech Result Details	Tech Result Note
Success	According to Plan	

Comment
SLICKWATER PAD- ISIP (173 BBL) = 3032 PSI. TREATMENT EXHIBITED A SLIGHTLY POSITIVE PRESSURE RESPONSE (NOLTE=0.073). POST ISIP = 3150 PSI, 5-MIN = 2994 PSI. TURN ON IN 47 MINUTES 2600 PSI.

Other In Hole

Run Date	Des	OD (in)	Top (ftKB)	Btm (ftKB)

Logs

Date	Type	Top, MD (ftKB)	Btm, MD (ftKB)
5/22/2008	CBL/CCL/GR	1,480.0	6,864.0
4/6/2013	GYRO	13.0	6,725.0

