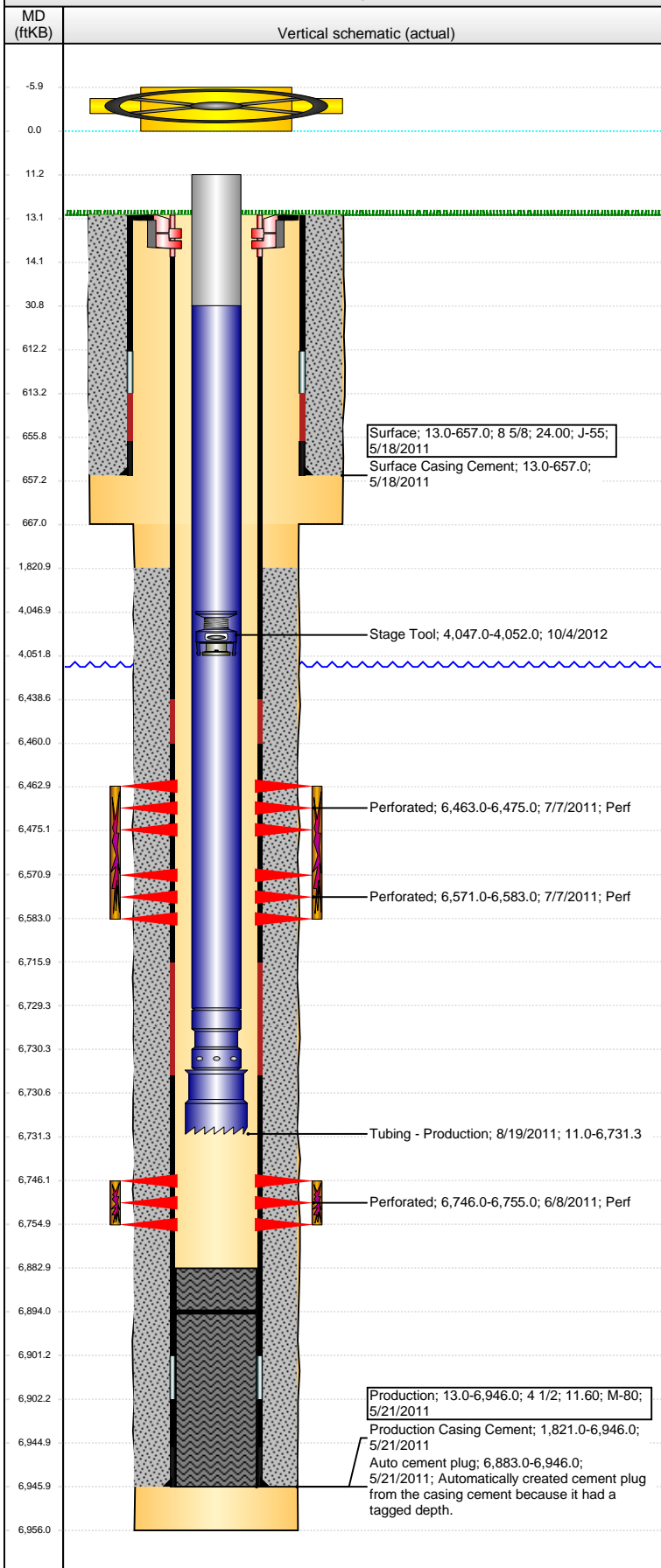


Well Name: WELLS RANCH PC AA22-03

VERTICAL - ORIGINAL HOLE, 3/8/2016 11:04:53 AM



Well Header

API 05-123-31895	Business Unit DJ BASIN	District 15	Well Config VERTICAL
Original KB Elevation (ft) 4,735	KB - GL / MSL (ftKB) 13.00	Spud Date 5/18/2011	P & A Date
Comment			

Directions To Well

WCR 67 & WCR 68, GO EAST 2/10, SOUTH 3/10, EAST 300 YARDS, NORTH 1/10 INTO LOCATION

Congressional Location

Quarter 1	Quarter 2	Quarter 3	Quarter 4	Section	Township	Twnshp N...	Range	Rng E/W Dir
		NE	NW	22	6	N	63	W

Bottom Hole Location

North-South Distance (ft)	From N or S Line	East-West Distance (ft)	From E or W Line

Plug Back Total Depths

Date	Depth (ftKB)	Method	Com
5/21/2011	6,902.0	CASING TALLY	FLOAT COLLAR
6/2/2011	6,883.0	CASED HOLE LOG	DEPTH-LOGGER/CGL
8/19/2011	6,894.0	TAG	C/O W/139' RAT HOLE

Wellbore Sections

Section Des	Size (in)	Act Top, MD (ftKB)	Act Btm, MD (ftKB)
SURFACE	12 1/4	13.0	667.0
PRODUCTION	7 7/8	667.0	6,956.0

Zone Statuses

Zone Name	Status Date	Status	Fluid Type	Job	Prod Method
NIOBRARA	7/9/2011	PR		DRILLING/CO...	
CODELL	7/9/2011	PR		DRILLING/CO...	

Casing Strings

Surface, 657.0ftKB

Casing Description	Run Date	OD (in)	Wt/Len (l...)	Grade	Top, MD (ft...)	MD (ftKB)
Surface	5/18/2011	8 5/8	24.00	J-55	13.0	657.0

Production, 6,946.0ftKB

Casing Description	Run Date	OD (in)	Wt/Len (l...)	Grade	Top, MD (ft...)	MD (ftKB)
Production	5/21/2011	4 1/2	11.60	M-80	13.0	6,946.0

Cement

Description	Top Depth (ftKB)	Bottom Depth (ftKB)
Surface Casing Cement	13.0	657.0
Description	Top Depth (ftKB)	Bottom Depth (ftKB)
Production Casing Cement	1,821.0	6,946.0

Tubing Strings

Tubing Description	Run Date	String...	ID (in)	Wt (lb/ft)	Grade	Len (ft)	Set De...
Tubing - Production	8/19/2011	2 3/8	1.995	4.70	J-55	6,720.26	6,729.2

Tubing Components

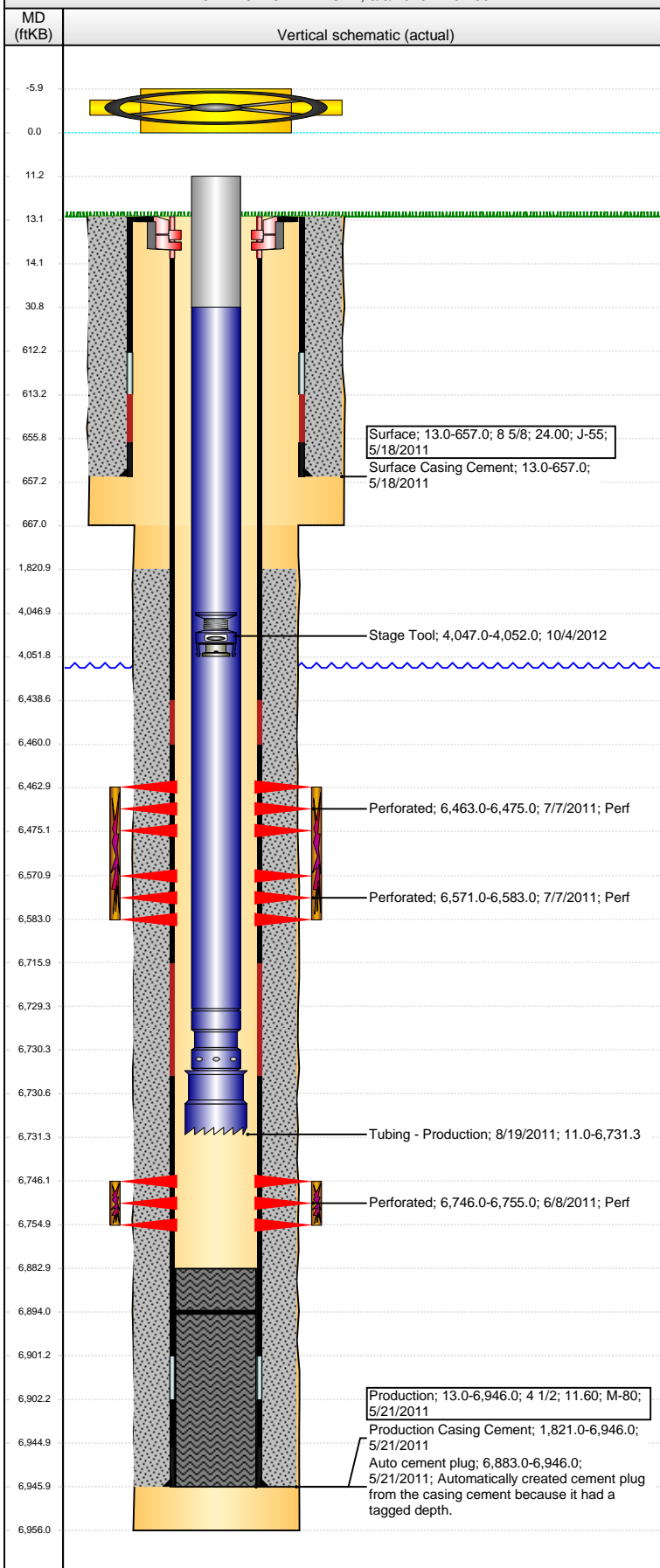
Item Des	OD (in)	Wt (lb/ft)	Grade	Jts	Len (ft)	Btm (ftKB)	Btm (TVD) (ftKB)
Tubing Pup Joint	2 3/8	4.70	J-55	2	20.00	31.0	
EUE 8rd Tubing	2 3/8	4.70	J-55	218	6,698.37	6,729.4	
Pump Seating Nipple	2 3/8		J-55	1	1.10	6,730.5	6,728.4
Pump Off Bit Sub	3 1/16		J-55	1	0.79	6,731.3	6,729.2

Perforation Data

Zone	Bnch/St g	Entered Shot Total	Top (ftKB)	Btm (ftKB)	Date
NIOBRARA, ORIGINAL HOLE	A	24	6,463.00	6,475.00	7/7/2011
NIOBRARA, ORIGINAL HOLE	B	24	6,571.00	6,583.00	7/7/2011
CODELL, ORIGINAL HOLE		36	6,746.00	6,755.00	6/8/2011

Well Name: WELLS RANCH PC AA22-03

VERTICAL - ORIGINAL HOLE, 3/8/2016 11:04:55 AM



Stimulations & Treatments

Date	Zone	Primary Job Type
7/7/2011	CODELL, ORIGINAL HOLE	DRILLING/COMPLETION - ORIGINAL
Technical Result	Tech Result Details	Tech Result Note
Success	According to Plan	
Comment (CODELL ND) ISIP 2790. 5 MIN 2445. REVERSE STEP RESULTS: NWB 236, PERF 148, WB 318, OPEN PERF 15, TOTAL 702. INCREASED RATE TO 22 BPM DUE TO LEAK OFF. JOB WENT WELL WITH NO ISSUES TO REPORT. AVERAGES: VISC 23.8, TEMP 76, PH 10.32, NOLTE FLAT. POST ISIP 3142, 5 MIN 3046.		
Date	Zone	Primary Job Type
7/7/2011	NIOBRARA, ORIGINAL HOLE	DRILLING/COMPLETION - ORIGINAL
Technical Result	Tech Result Details	Tech Result Note
Success	According to Plan	
Comment (NIOBRARA A&B ND) ISIP 3076. PUMPED AN EXTRA 250 BBL OF XL PAD TO ENSURE THAT WE HAD GOOD GEL VISC. JOB WENT WELL. AVERAGES: VISC 22.0, TEMP 75.8, PH 10.29, NOLTE +0.1. POST ISIP 3127, 5 MIN 2983.		

Other In Hole

Run Date	Des	OD (in)	Top (ftKB)	Btm (ftKB)
10/4/2012	Stage Tool	2	4,047.0	4,052.0

Logs

Date	Type	Top, MD (ftKB)	Btm, MD (ftKB)
5/21/2011	Caliper/Comp. Density/Neutron/GR/SP/ML	657.0	6,956.0
5/21/2011	DIL/GR/SP/Caliper	657.0	6,956.0
6/2/2011	CBL/CCL/GR	13.0	6,882.0