



A Schlumberger Company

COMPANY : BAYSWATER EXPLORATION & PRODUCTION

WELL : WALTON H-25HC

FIELD : WATTENBERG

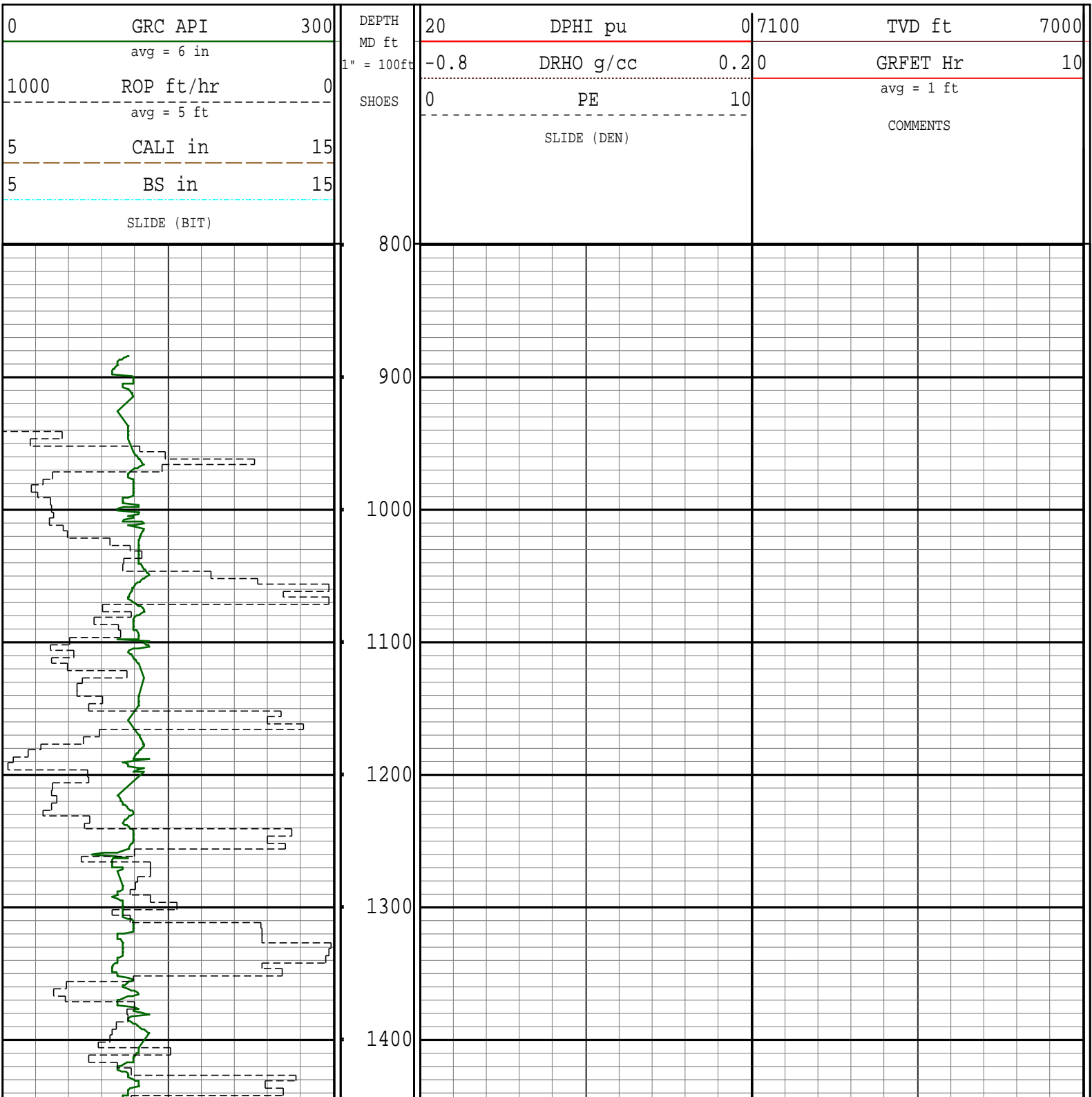
REMARKS:

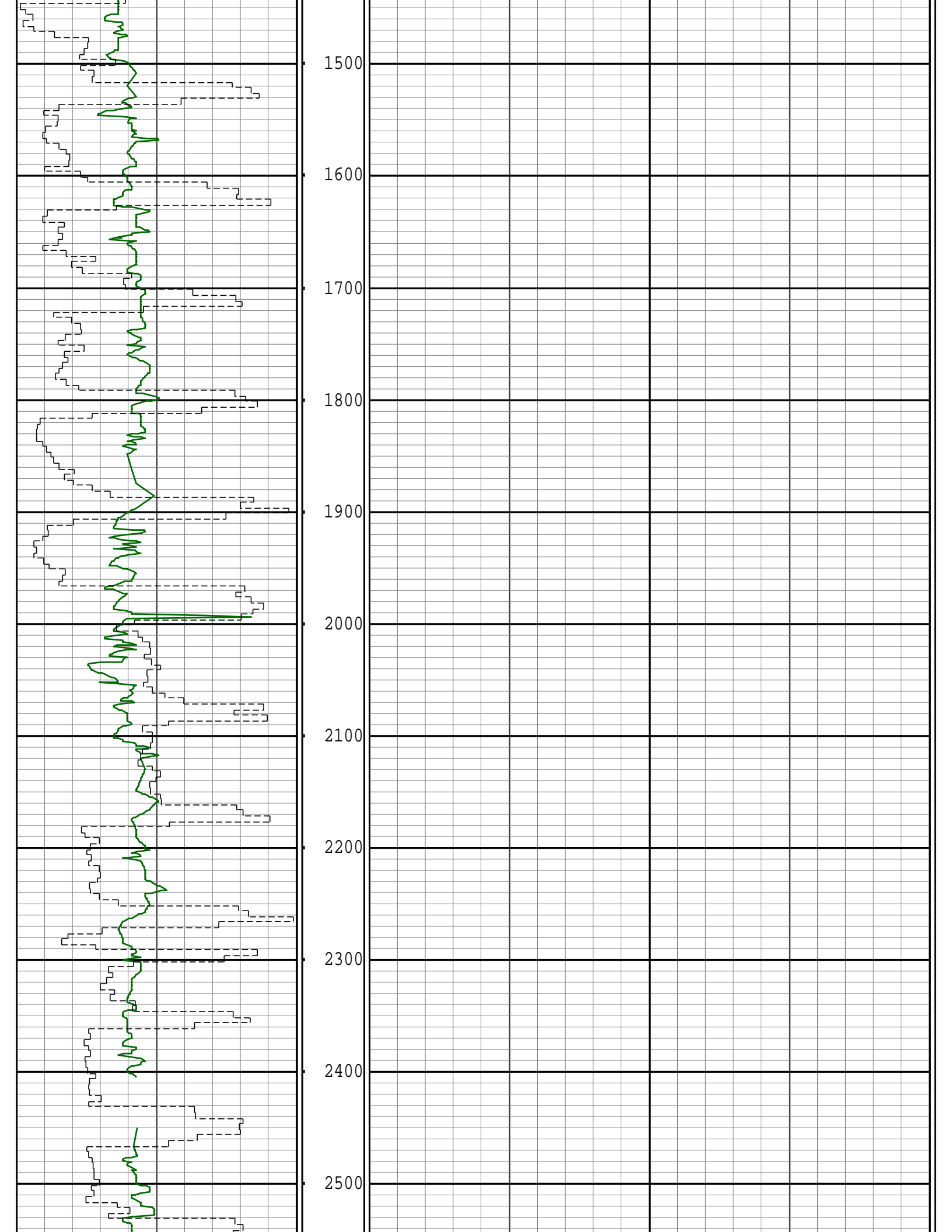
NOTICE - All interpretations are opinions based on inferences from electrical or other measurements and we do not guarantee the accuracy or correctness of any interpretations. We shall not, except in the case of gross or wilful negligence on our part, be liable or responsible for loss, costs, damages or expenses incurred or sustained by anyone as a result of any interpretations made by one of our officers, agents or employees. These interpretations are also subject to our General Terms and Conditions as set out in our current Price Schedule.

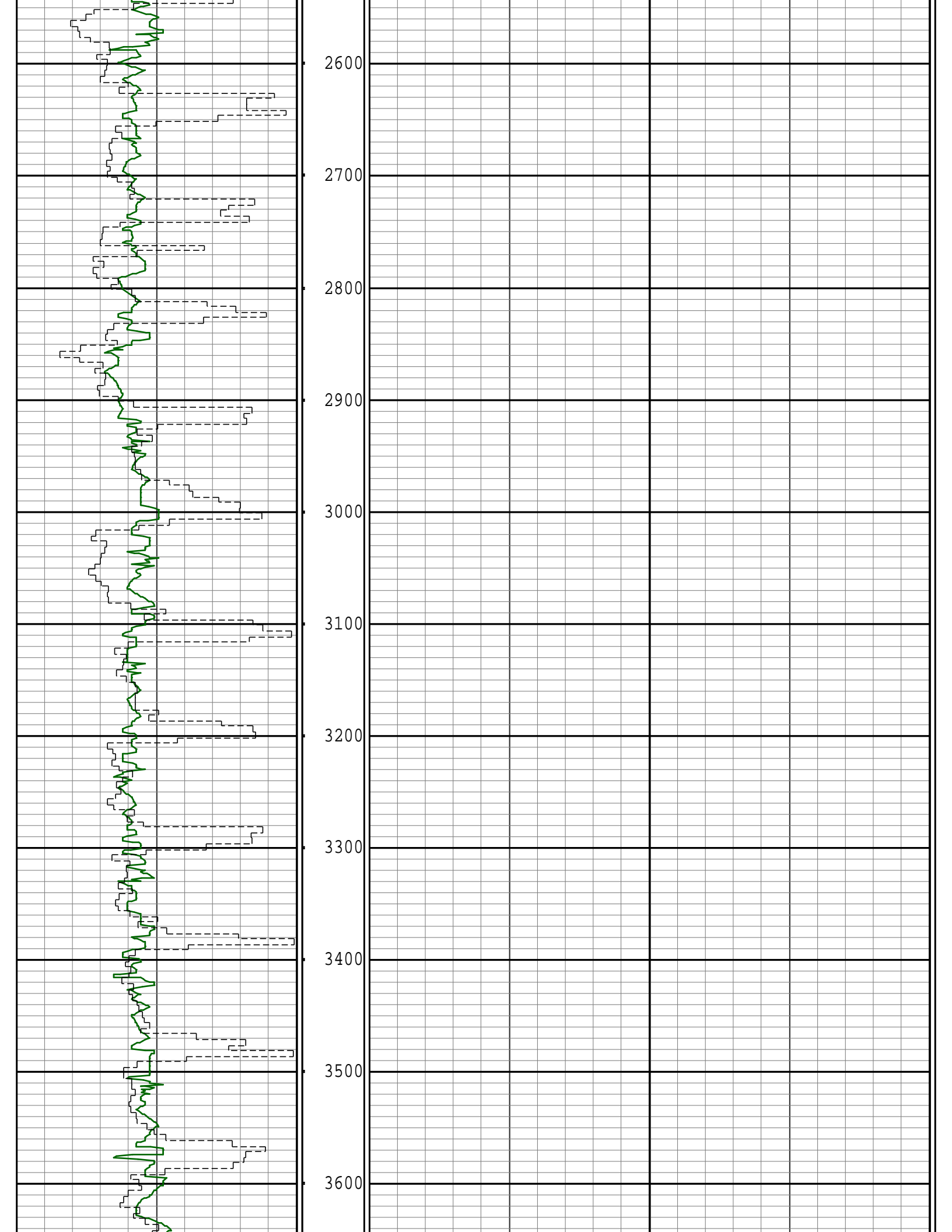
PATHFINDER - A Schlumberger Company

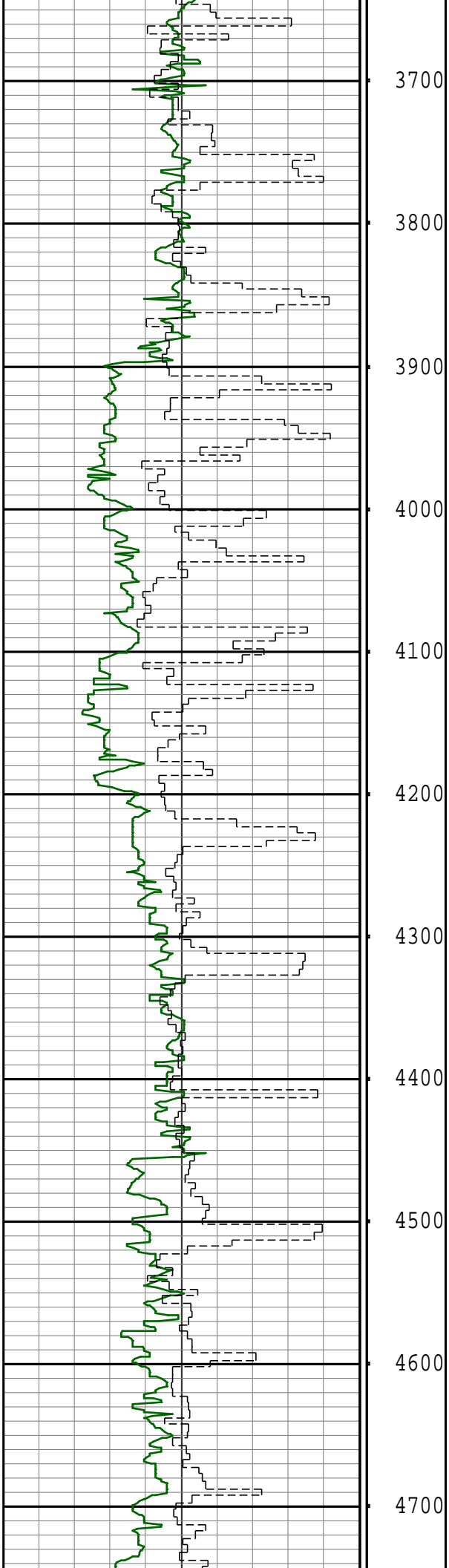
Version No : RX5 V7.01A Release 24Jul2015

Plot Time : 27-Aug-2015 04:42









3700

3800

3900

4000

4100

4200

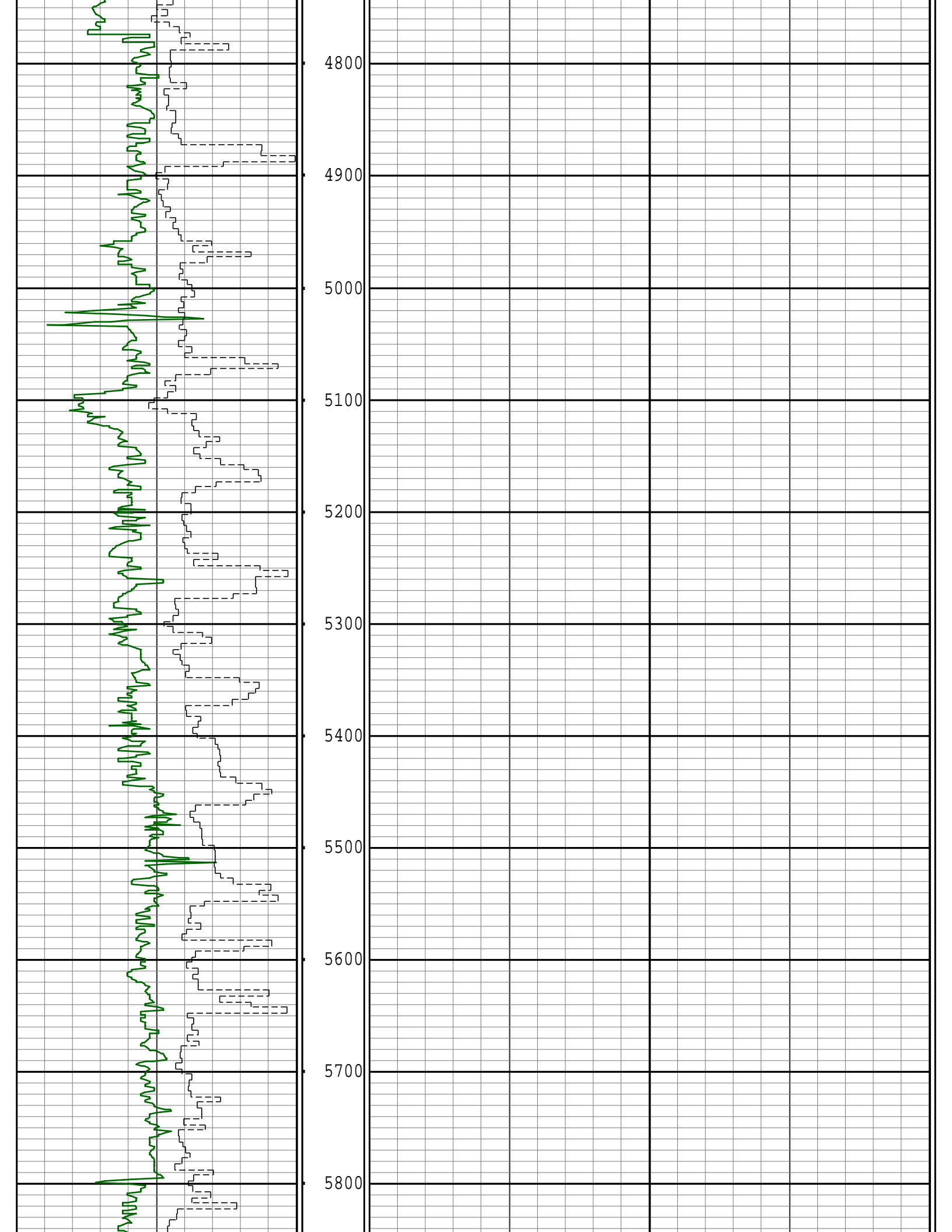
4300

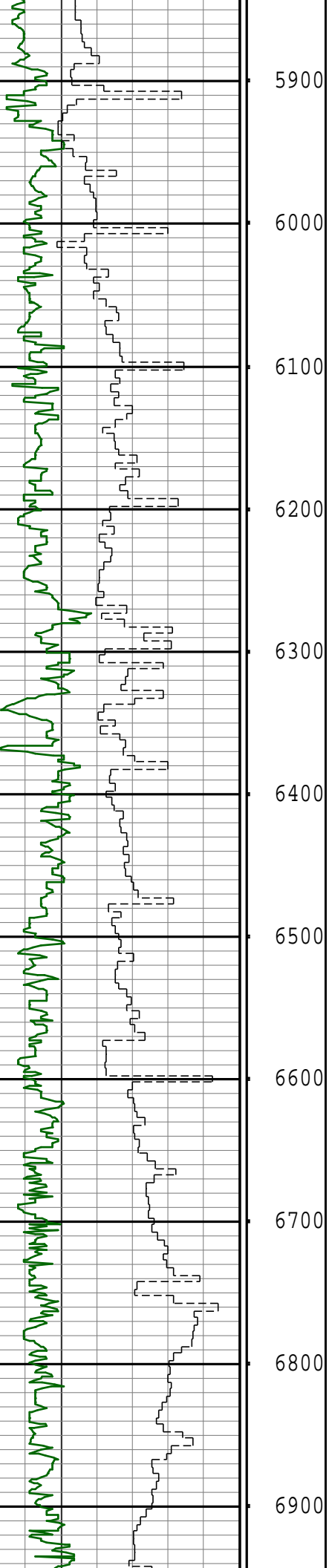
4400

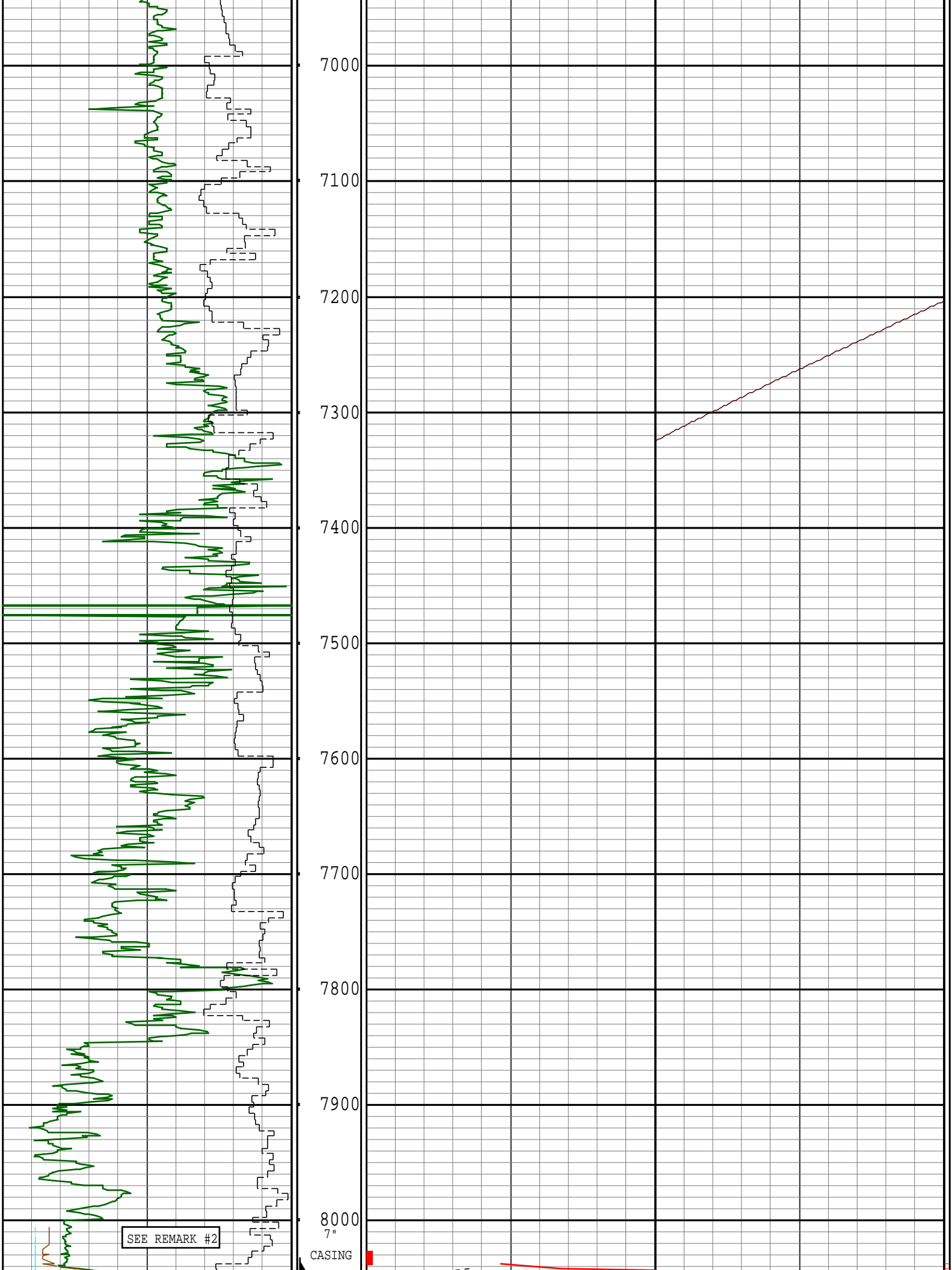
4500

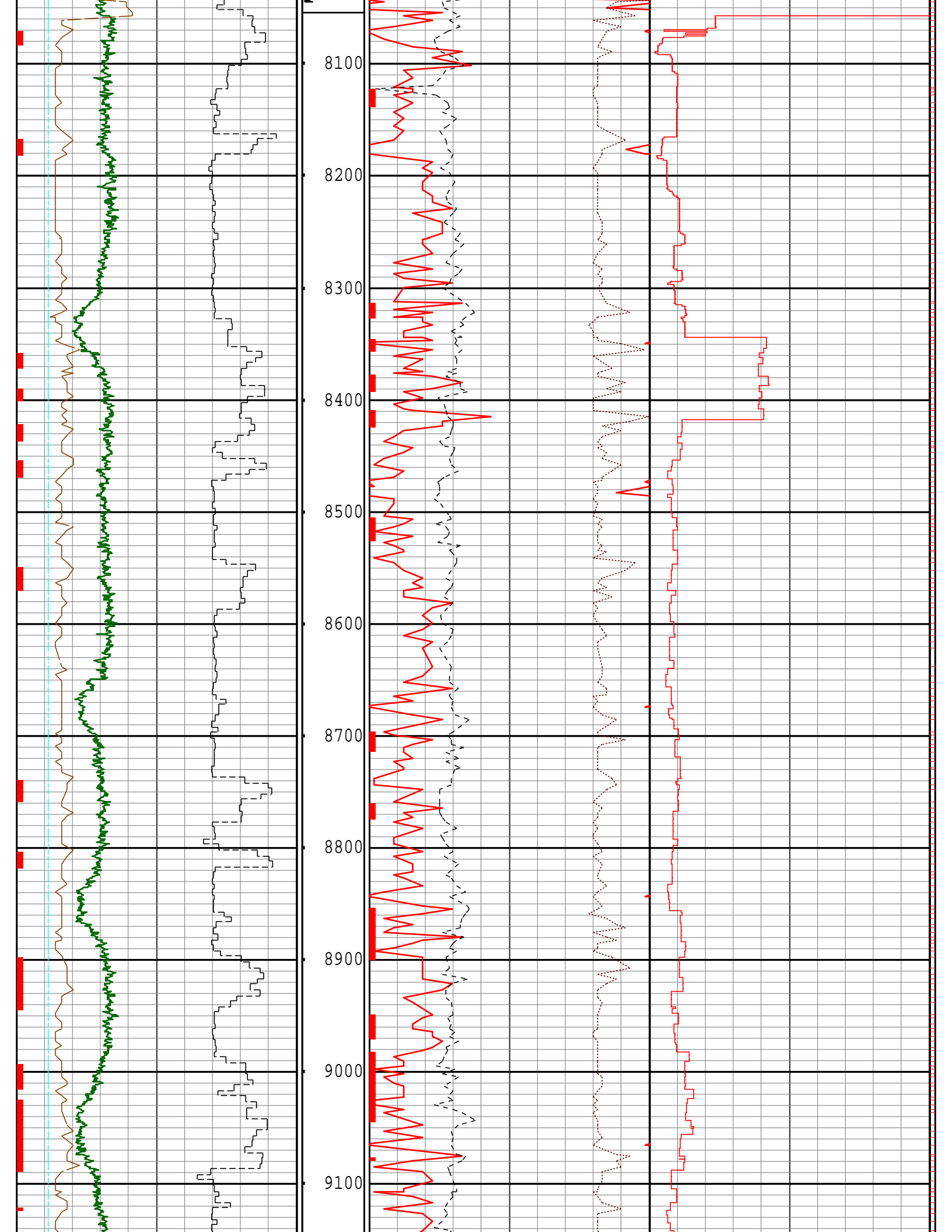
4600

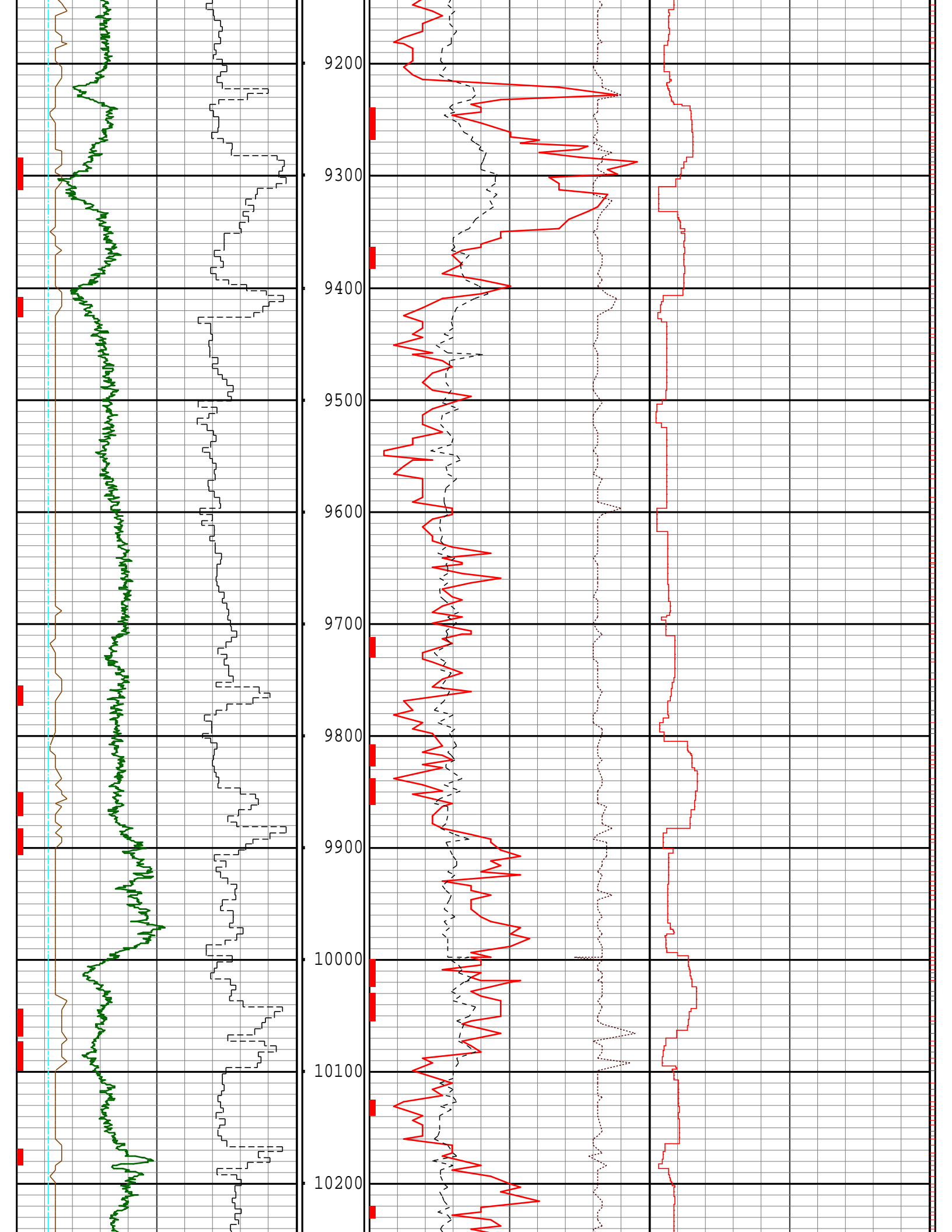
4700

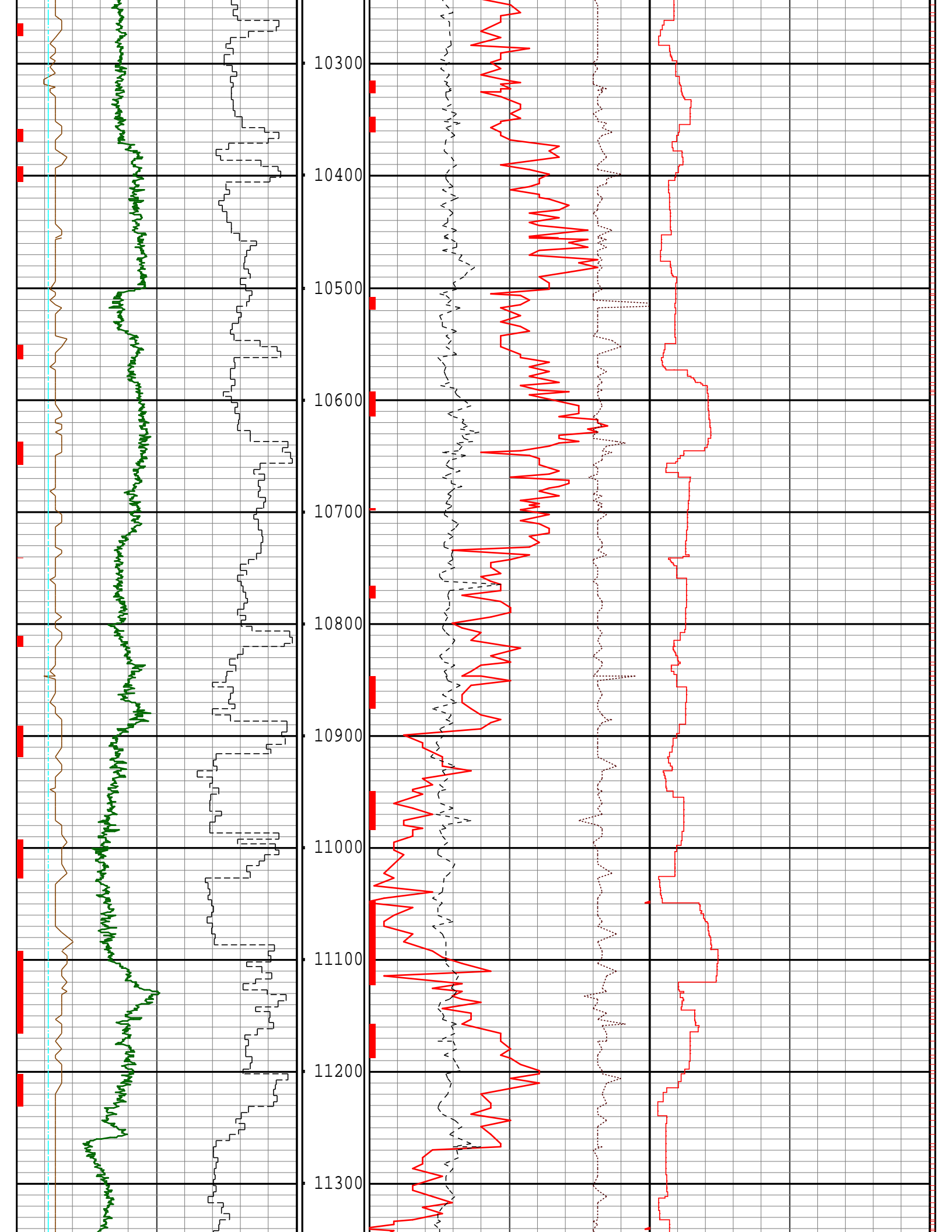


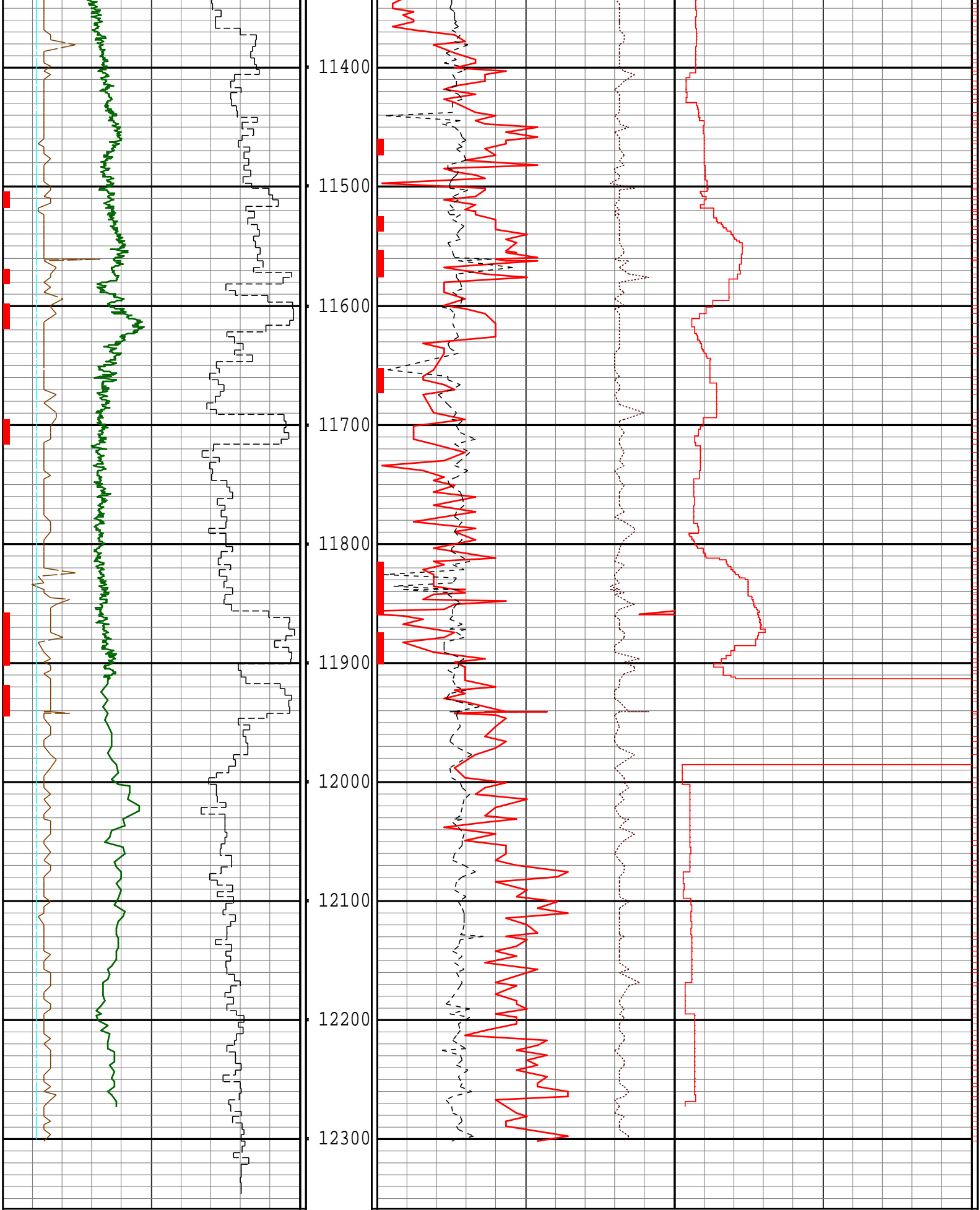












0	GRC API	300	DEPTH	20	DPHI pu	0	7100	TVD ft	7000
	avg = 6 in		MD ft	-0.8	DRHO g/cc	0.2	0	GRFET Hr	10
1000	ROP ft/hr	0	SHOES	0	PE	10		avg = 1 ft	
	avg = 5 ft								

avg. 5 ft

5 CALI in 15

5 BS in 15

SLIDE (BIT)

SLIDE (DEN)

COMMENTS