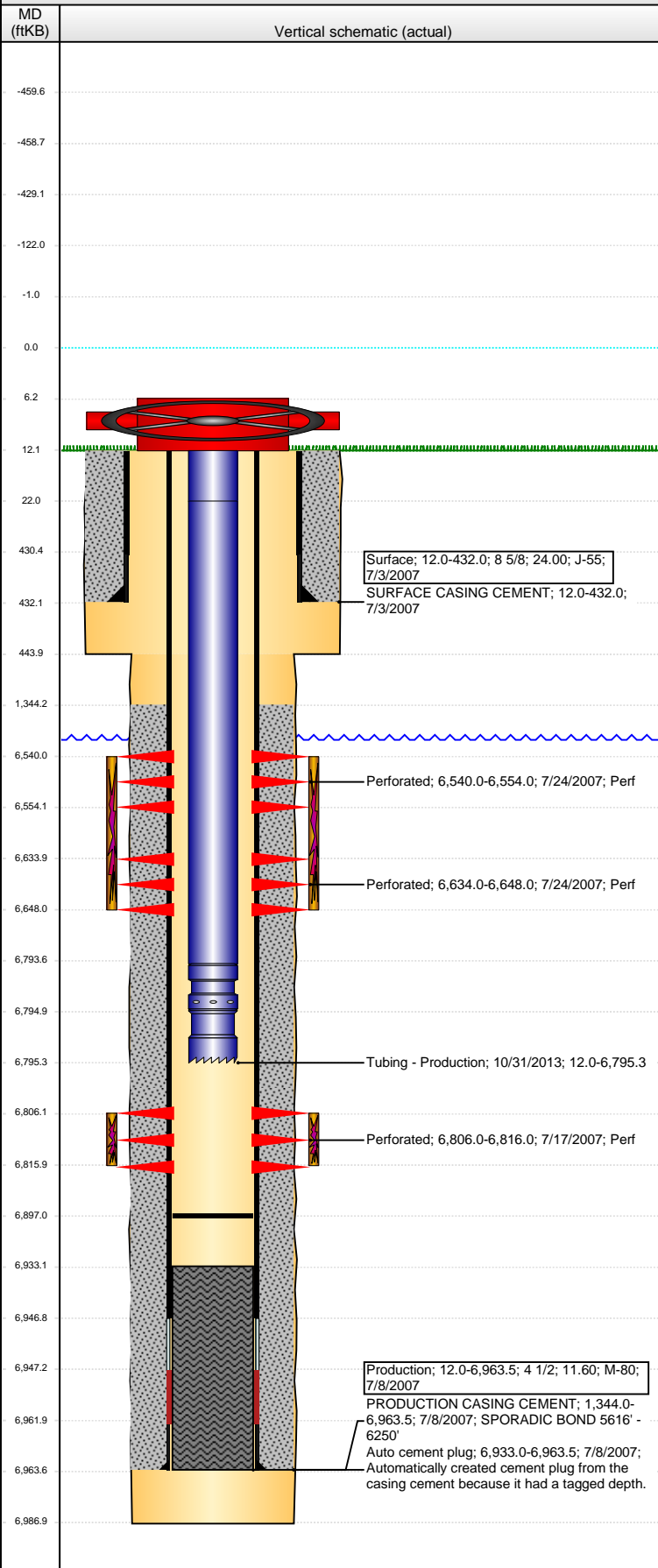


**Well Name: WELLS RANCH USX AA27-02**

VERTICAL - ORIGINAL HOLE, 3/8/2016 9:16:13 AM



## Well Header

API	Business Unit	District	Well Config
05-123-25267	DJ BASIN	15	VERTICAL
Original KB Elevation (ft)	KB - GL / MSL (ftKB)	Spud Date	P & A Date
4,804	12.00	7/2/2007	
Comment			

## Directions To Well

CR 67 AND CR 68, E 2/10, S 1.5 MI, E 2/10, NW INTO

## Congressional Location

Quarter 1	Quarter 2	Quarter 3	Quarter 4	Section	Township	Twnshp N...	Range	Rng E/W Dir
		NW	NE	27	6	N	63	W

## Bottom Hole Location

North-South Distance (ft)	From N or S Line	East-West Distance (ft)	From E or W Line

## Plug Back Total Depths

Date	Depth (ftKB)	Method	Com
7/8/2007	6,946.8	CASING TALLY	TOP OF FLOAT COLLAR
7/16/2007	6,933.0	CASED HOLE LOG	DEPTH LOGGER
8/1/2013	6,913.0	TAG	
10/30/2013	6,897.0	TAG	D/O CBP AND PUSHED TO 6897

## Wellbore Sections

Section Des	Size (in)	Act Top, MD (ftKB)	Act Btm, MD (ftKB)
SURFACE	12 1/4	12.0	444.0
PRODUCTION	7 7/8	444.0	6,987.0

## Zone Statuses

Zone Name	Status Date	Status	Fluid Type	Job	Prod Method
NIOBRARA	7/26/2007	PR		DRILLING/CO...	
CODELL	7/26/2007	PR		DRILLING/CO...	

## Casing Strings

### Surface, 432.0ftKB

Casing Description	Run Date	OD (in)	Wt/Len (l...)	Grade	Top, MD (ft...)	MD (ftKB)
Surface	7/3/2007	8 5/8	24.00	J-55	12.0	432.0

### Production, 6,963.5ftKB

Casing Description	Run Date	OD (in)	Wt/Len (l...)	Grade	Top, MD (ft...)	MD (ftKB)
Production	7/8/2007	4 1/2	11.60	M-80	12.0	6,963.5

## Cement

Description	Top Depth (ftKB)	Bottom Depth (ftKB)
SURFACE CASING CEMENT	12.0	432.0
Description	Top Depth (ftKB)	Bottom Depth (ftKB)
PRODUCTION CASING CEMENT	1,344.0	6,963.5

## Tubing Strings

Tubing Description	Run Date	String...	ID (in)	Wt (lb/ft)	Grade	Len (ft)	Set De...
Tubing	9/10/2007	2 3/8	1.995	4.70	J-55	6,781.00	
Tubing Description	Run Date	String...	ID (in)	Wt (lb/ft)	Grade	Len (ft)	Set De...
Tubing - Production	10/31/2013	2 3/8	1.995	4.70	J-55	6,783.29	

## Tubing Components

Item Des	OD (in)	Wt (lb/ft)	Grade	Jts	Len (ft)	Btm (ftKB)	Btm (TVD) (ftKB)
Pup Joint	2 3/8	4.70	J-55	1	10.00	22.0	
Tubing	2 3/8	4.70	J-55	219	6,771.69	6,793.7	
Pump Seating Nipple	2 3/8	1.10		1	1.20	6,794.9	
Notched collar	2 3/8			1	0.40	6,795.3	

## Perforation Data

Zone	Bnch/St g	Entered Shot Total	Top (ftKB)	Btm (ftKB)	Date
NIOBRARA, ORIGINAL HOLE	A	56	6,540.00	6,554.00	7/24/2007
NIOBRARA, ORIGINAL HOLE	B	56	6,634.00	6,648.00	7/24/2007
CODELL, ORIGINAL HOLE		40	6,806.00	6,816.00	7/17/2007

## Stimulations & Treatments

Date	Zone	Primary Job Type
7/24/2007	NIOBRARA, ORIGINAL HOLE	DRILLING/COMPLETION - ORIGINAL
Technical Result	Tech Result Details	Tech Result Note
Comment		

**Well Name: WELLS RANCH USX AA27-02**

VERTICAL - ORIGINAL HOLE, 3/8/2016 9:16:15 AM

## Stimulations & Treatments

Date 7/24/2007	Zone CODELL, ORIGINAL HOLE	Primary Job Type DRILLING/COMPLETION - ORIGINAL
-------------------	-------------------------------	--

Technical Result	Tech Result Details	Tech Result Note
------------------	---------------------	------------------

Comment

## Other In Hole

Run Date	Des	OD (in)	Top (ftKB)	Btm (ftKB)

## Logs

Date	Type	Top, MD (ftKB)	Btm, MD (ftKB)
7/5/2007	COMPENSATED DENSITY	2,800.0	6,963.0
7/5/2007	INDUCTION	432.0	6,983.0
7/16/2007	CBL/CCL/GR	1,230.0	6,926.0
5/7/2013	GYRO	12.0	6,750.0

