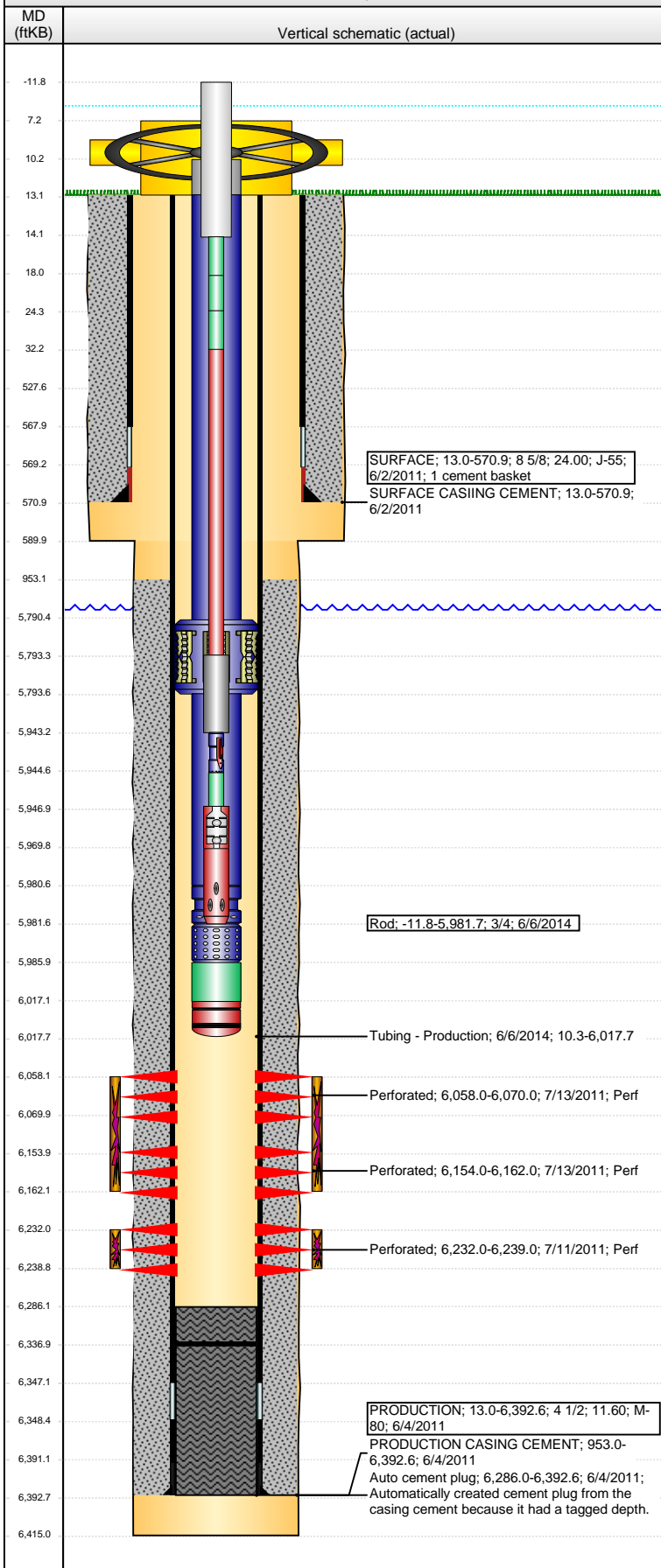


Well Name: MCCLELLAN PC LG04-15

VERTICAL - ORIGINAL HOLE, 3/9/2016 1:16:29 PM



Well Header

API 05-123-33457	Business Unit DJ BASIN	District 25	Well Config VERTICAL
Original KB Elevation (ft) 4,856	KB - GL / MSL (ftKB) 13.00	Spud Date 6/1/2011	P & A Date
Comment			

Directions To Well

HWY 14 & CR 115, NORTH 4.5, WEST 0.3, NORTHWEST 0.2 INTO LOCATION

Congressional Location

Quarter 1	Quarter 2	Quarter 3	Quarter 4	Section	Township	Twnshp N...	Range	Rng E/W Dir
		SW	SE	4	8	N	59	W

Bottom Hole Location

North-South Distance (ft)	From N or S Line	East-West Distance (ft)	From E or W Line
---------------------------	------------------	-------------------------	------------------

Plug Back Total Depths

Date	Depth (ftKB)	Method	Com
6/2/2011	6,347.0	CASING TALLY	GUIDE SHOE
7/11/2011	6,286.0		DEPTH LOGGER ON CBL
7/25/2011	6,337.0	TAG	DRILLED UP CFTP & PUSHED TO BOTTOM. 98' O...

Wellbore Sections

Section Des	Size (in)	Act Top, MD (ftKB)	Act Btm, MD (ftKB)
SURFACE	12 1/4	13.0	590.0
PRODUCTION	7 7/8	590.0	6,415.0

Zone Statuses

Zone Name	Status Date	Status	Fluid Type	Job	Prod Method
CODELL	2/14/2012	PR		DRILLING/CO...	
NIOBRARA	2/14/2012	PR		DRILLING/CO...	

Casing Strings

Casing Description	Run Date	OD (in)	Wt/Len (l...)	Grade	Top, MD (ft...)	MD (ftKB)
SURFACE	6/2/2011	8 5/8	24.00	J-55	13.0	570.9

PRODUCTION, 6,392.6ftKB

Casing Description	Run Date	OD (in)	Wt/Len (l...)	Grade	Top, MD (ft...)	MD (ftKB)
PRODUCTION	6/4/2011	4 1/2	11.60	M-80	13.0	6,392.6

Cement

Description	Top Depth (ftKB)	Bottom Depth (ftKB)
SURFACE CASIING CEMENT	13.0	570.9
Description	Top Depth (ftKB)	Bottom Depth (ftKB)
PRODUCTION CASING CEMENT	953.0	6,392.6

Tubing Strings

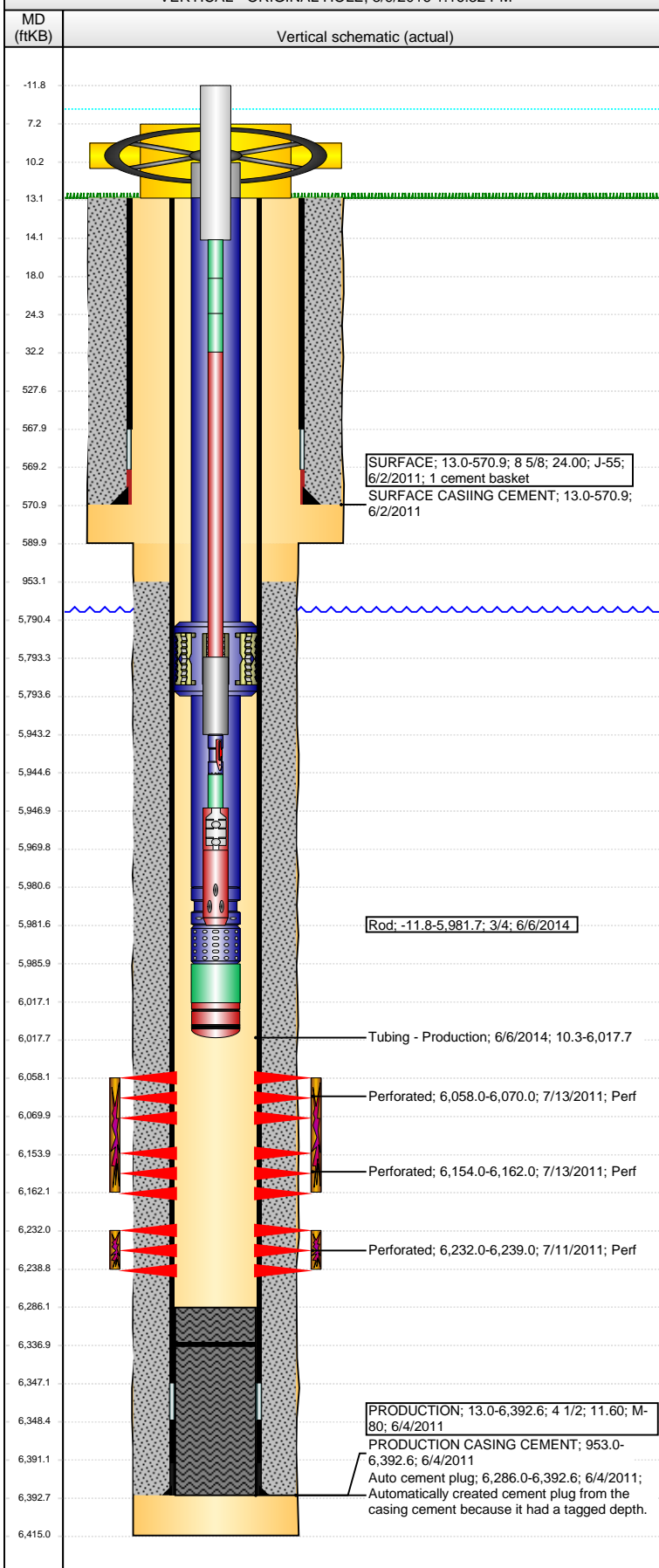
Tubing Description	Run Date	String...	ID (in)	Wt (lb/ft)	Grade	Len (ft)	Set De...
Tubing - Production	7/26/2011	2 3/8	1.995	4.70	J-55	6,183.72	6,196.7
Tubing - Production	5/23/2012	2 3/8	1.995	4.70	J-55	6,007.43	6,017.7
Tubing - Production	8/27/2013	2 3/8	1.995	4.70	J-55	6,007.43	6,017.7
Tubing - Workstring	3/10/2014	2 3/8	1.995	4.70	J-55	5,357.00	5,370.0
Tubing - Production	6/6/2014	2 3/8	1.995	4.70	J-55	6,007.43	6,017.7

Tubing Components

Item Des	OD (in)	Wt (lb/ft)	Grade	Jts	Len (ft)	Btm (ftKB)	Btm (TVD) (ftKB)
Stretch Correction	2 3/8	4.70	J-55	1	2.75	13.0	
EUE 8rd Tubing	2 3/8	4.70	J-55	186	5,777.43	5,790.5	5,790.5
Anchor/catcher	3.99	4.70	J-55	1	3.25	5,793.7	5,793.7
EUE 8rd Tubing	2 3/8	4.70	J-55	6	186.89	5,980.6	5,980.6
Pump Seating	2 3/8	4.70	J-55	1	1.12	5,981.7	5,981.7
Nipple							
Perforated Joint	2 3/8	4.70	J-55	1	4.15	5,985.9	5,985.9
Mud Anchor	2 3/8	4.70	J-55	1	31.20	6,017.1	6,017.1
Bull Plug	2 3/8	4.70	J-55	1	0.64	6,017.7	6,017.7

Well Name: MCCLELLAN PC LG04-15

VERTICAL - ORIGINAL HOLE. 3/9/2016 1:16:32 PM



Rods & Pumps

Rod Description Rod		Run Date 6/6/2014	Set Depth (ftKB) 5,981.7	
Comment				
Item Description Polished Rod	OD Nominal (in) 1 1/2	Joints 1	Length (ft) 26.00	
Item Description Pony Rod	OD Nominal (in) 3/4	Joints 1	Length (ft) 4.00	
Item Description Pony Rod	OD Nominal (in) 3/4	Joints 1	Length (ft) 6.00	
Item Description Pony Rod	OD Nominal (in) 3/4	Joints 1	Length (ft) 8.00	
Item Description Sucker Rod	OD Nominal (in) 3/4	Joints 230	Length (ft) 5,761.00	
Item Description Sinker Bar	OD Nominal (in) 1 1/4	Joints 6	Length (ft) 150.00	
Item Description Hooks Tool	OD Nominal (in) 3/4	Joints 1	Length (ft) 1.50	
Item Description Pony Rod	OD Nominal (in) 3/4	Joints 1	Length (ft) 2.00	
Item Description RHBC Pump - BHD	OD Nominal (in) 1 1/4	Joints 1	Length (ft) 23.00	
API Pump Type R		Barrel Length (ft) 23.00	Seating Assembly Type C	
Item Description Strainer	OD Nominal (in) 1 1/4	Joints 1	Length (ft) 12.00	

Perforation Data	
1	100%
2	100%
3	100%
4	100%
5	100%
6	100%
7	100%
8	100%
9	100%
10	100%
11	100%
12	100%
13	100%
14	100%
15	100%
16	100%
17	100%
18	100%
19	100%
20	100%
21	100%
22	100%
23	100%
24	100%
25	100%
26	100%
27	100%
28	100%
29	100%
30	100%
31	100%
32	100%
33	100%
34	100%
35	100%
36	100%
37	100%
38	100%
39	100%
40	100%
41	100%
42	100%
43	100%
44	100%
45	100%
46	100%
47	100%
48	100%
49	100%
50	100%
51	100%
52	100%
53	100%
54	100%
55	100%
56	100%
57	100%
58	100%
59	100%
60	100%
61	100%
62	100%
63	100%
64	100%
65	100%
66	100%
67	100%
68	100%
69	100%
70	100%
71	100%
72	100%
73	100%
74	100%
75	100%
76	100%
77	100%
78	100%
79	100%
80	100%
81	100%
82	100%
83	100%
84	100%
85	100%
86	100%
87	100%
88	100%
89	100%
90	100%
91	100%
92	100%
93	100%
94	100%
95	100%
96	100%
97	100%
98	100%
99	100%
100	100%

Zone	Bnch/St g	Entered Shot Total	Top (ftKB)	Btm (ftKB)	Date
NIOBRARA, ORIGINAL HOLE	B	24	6,058.00	6,070.00	7/13/2011
NIOBRARA, ORIGINAL HOLE	C	16	6,154.00	6,162.00	7/13/2011
CODELL, ORIGINAL HOLE		28	6,232.00	6,239.00	7/11/2011

Stimulations & Treatments

Date	Zone	Primary Job Type	
7/13/2011	CODELL, ORIGINAL HOLE	DRILLING/COMPLETION - ORIGINAL	
Technical Result		Tech Result Details	Tech Result Note
Success		According to Plan	

Comment	
(CODELL): (7/12/2011): HAD PROBLEMS WITH BLENDER COMPUTER DURING PAD, FLUSHED WELL WITH LINEAR GEL AND SHUT DOWN 347 BBLs INTO PAD. SHUT DOWN FOR THE DAY TO BRING BLENDER TO THE YARD FOR REPAIRS.	
(7/13/2011): PRE-JOB ISDP 2115, 5 MIN 1923, ONLY 192 PSI OF LEAK OFF, DECIDED TO THE RATE AT 18 BPM. HAD PROBLEMS WITH WET SAND AND LEFT +/-5000 LB OF 20/40 SAND IN MOVER. JOB WENT WELL WITH NO OTHER ISSUES TO REPORT.	

Date 7/13/2011	Zone NIOBRARA, ORIGINAL HOLE	Primary Job Type DRILLING/COMPLETION - ORIGINAL
Technical Result Success	Tech Result Details According to Plan	Tech Result Note

Comment			
(NIOBRARA): NO BREAK DOWN PRESSURE OBSERVED. HAD A FEW DENSITY DROPS BECAUSE OF WET SAND. TOTALIZED 20K SHORT (8.6%) ON SHAND			

Other In Hole

Run Date	Des	OD (in)	Top (ftKB)	Btm (ftKB)

Logs

Date	Type	Top, MD (ftKB)	Btm, MD (ftKB)
6/4/2011	DIRECTIONAL LOG	575.0	6,410.0
6/4/2011	SPECTRAL DENSITY/Pe/DSN NEUTRON/SP/ARRAY COMPENSATED TRUE RESISTIVITY	575.0	6,401.0
6/4/2011	SPECTRAL GAMMA RAY	5,750.0	6,367.0
7/11/2011	CBL/CCL/GR	30.0	6,285.0
6/5/2013	GYRO	13.0	6,000.0