

HALLIBURTON

iCem[®] Service

EXTRACTION OIL & GAS

For: HUGH MCGRAW

Date: Tuesday, March 01, 2016

Bybee #6

Production

Job Date: Saturday, February 20, 2016

Sincerely,

Derek Trier

Legal Notice

Warning Disclaimer

Although the information contained in this report is based on sound engineering practices, the copyright owner(s) does (do) not accept any responsibility whatsoever, in negligence or otherwise, for any loss or damage arising from the possession or use of the report whether in terms of correctness or otherwise. The application, therefore, by the user of this report or any part thereof, is solely at the user's own risk.

Limitations of Liability

Except as expressly set forth herein, there are no representations or warranties by Halliburton, express or implied, including implied warranties of merchantability and/or fitness for a particular purpose. In no event will Halliburton or its suppliers be liable for consequential, incidental, special, punitive or exemplary damages (including, without limitation, loss of data, profits, use of hardware, or software). Customer accepts full responsibility for any investment made based on results from the Software. Any interpretations, analyses or modeling of any data, including, but not limited to Customer data, and any recommendation or decisions based upon such interpretations, analyses or modeling are opinions based upon inferences from measurements and empirical relationships and assumptions, which inferences and assumptions are not infallible, and with respect to which professional may differ. Accordingly, Halliburton cannot and does not warrant the accuracy, correctness or completeness of any such interpretation, recommendation, modeling or other products of the Software Product. As such, any interpretation, recommendation or modeling resulting from the Software for the purpose of any drilling, well treatment, production or financial decision will be at the sole risk of Customer. Under no circumstances will Halliburton or its suppliers be liable for any damages.

Table of Contents

1.0 Cementing Job Summary 4

 1.1 Executive Summary4

2.0 Real-Time Job Summary 7

 2.1 Job Event Log7

3.0 Attachments..... 9

 3.1 BYBEE #6-Custom Results (1).png9

 3.2 BYBEE #6-Custom Results (2).png10

1.0 Cementing Job Summary

1.1 Executive Summary

Halliburton appreciates the opportunity to perform the cementing services on the **Bybee #6** cement **Surface** casing job. A pre-job safety meeting was held before the job where details of the job were discussed, potential safety hazards were reviewed, and environmental compliance procedures were outlined.

32bbl of cement and all spacer returned to surface.

Halliburton maintains a continuous quality improvement process and appreciates any comments or suggestions that you may have. Halliburton again thanks you for the opportunity to perform service work on this well. We hope to be your solutions provider for future projects.

Respectfully,

Halliburton [Ft. Lupton]

Job Times

| | Date | Time | Time Zone |
|----------------------------|-------------|-------------|------------------|
| Called Out Time: | 2/20/2016 | 1130 | MTN |
| Arrived On Location At: | | 1500 | |
| Job Started At: | | 1810 | |
| Job Completed At: | | 1917 | |
| Departed Location At: | | 2030 | |

HALLIBURTON

Cementing Job Summary

The Road to Excellence Starts with Safety

| | | | | | | | | | | |
|--|-------------|-----------------------|-------|--------------------------------------|------------------------|---------------------------|---------------|--------------|---------------------|---------------|
| Sold To #: 369404 | | Ship To #: 3677757 | | Quote #: | | Sales Order #: 0903141511 | | | | |
| Customer: EXTRACTION OIL & GAS - | | | | Customer Rep: JOSE | | | | | | |
| Well Name: BYBEE | | Well #: 6 | | API/UWI #: 05-123-41797-00 | | | | | | |
| Field: WATTENBERG | | City (SAP): FIRESTONE | | County/Parish: WELD | | State: COLORADO | | | | |
| Legal Description: NE SE-14-2N-68W-2268FSL-1220FEL | | | | | | | | | | |
| Contractor: PATTERSON-UTI ENERGY | | | | Rig/Platform Name/Num: PATTERSON 346 | | | | | | |
| Job BOM: 7521 | | | | | | | | | | |
| Well Type: HORIZONTAL OIL | | | | | | | | | | |
| Sales Person: HALAMERICA\HB71271 | | | | Srvc Supervisor: Christopher Pickell | | | | | | |
| Job | | | | | | | | | | |
| Formation Name | | | | | | | | | | |
| Formation Depth (MD) | | Top | | Bottom | | | | | | |
| Form Type | | | | BHST | | | | | | |
| Job depth MD | | 1615ft | | Job Depth TVD | | 1615 | | | | |
| Water Depth | | | | Wk Ht Above Floor | | 4FT | | | | |
| Perforation Depth (MD) | | From | | To | | | | | | |
| Well Data | | | | | | | | | | |
| Description | New / Used | Size in | ID in | Weight lbm/ft | Thread | Grade | Top MD ft | Bottom MD ft | Top TVD ft | Bottom TVD ft |
| Casing | | 9.625 | 8.921 | 36 | | | 0 | 1597 | 0 | 1597 |
| Open Hole Section | | | 13.5 | | | | 0 | 1615 | 0 | 1615 |
| Tools and Accessories | | | | | | | | | | |
| Type | Size in | Qty | Make | Depth ft | | Type | Size in | Qty | Make | |
| Guide Shoe | 9.625 | | | | | Top Plug | 9.625 | 1 | KLX | |
| Float Shoe | 9.625 | 1 | KLX | 1597 | | Bottom Plug | 9.625 | | | |
| Float Collar | 9.625 | 1 | KLX | 1555 | | SSR plug set | 9.625 | | | |
| Insert Float | 9.625 | | | | | Plug Container | 9.625 | 1 | HES | |
| Stage Tool | 9.625 | | | | | Centralizers | 9.625 | | | |
| Fluid Data | | | | | | | | | | |
| Stage/Plug #: 1 | | | | | | | | | | |
| Fluid # | Stage Type | Fluid Name | Qty | Qty UoM | Mixing Density lbm/gal | Yield ft3/sack | Mix Fluid Gal | Rate bbl/min | Total Mix Fluid Gal | |
| 1 | Fresh Water | Fresh Water | 30 | bbl | 8.33 | | | 5 | | |
| Fluid Data | | | | | | | | | | |
| Fluid # | Stage Type | Fluid Name | Qty | Qty UoM | Mixing Density lbm/gal | Yield ft3/sack | Mix Fluid Gal | Rate bbl/min | Total Mix Fluid Gal | |
| 2 | SwiftCem | SWIFTCEN (TM) SYSTEM | 590 | sack | 13.5 | 1.74 | 9.2 | 8 | | |

HALLIBURTON

Cementing Job Summary

| Fluid # | Stage Type | Fluid Name | Qty | Qty UoM | Mixing Density lbm/gal | Yield ft3/sack | Mix Fluid Gal | Rate bbl/min | Total Mix Fluid Gal |
|--|--------------------------|--------------------------|-------|---------|---------------------------|-------------------|------------------|-----------------|---------------------------|
| 3 | Fresh Water Displacement | Fresh Water Displacement | 120.2 | bbl | 8.33 | | | 10-2.5 | |
| | | | | | | | | | |
| Cement Left In Pipe | | Amount | 42 ft | | Reason | | | Shoe Joint | |
| | | | | | | | | | |
| Comment Returned all water spacer and 32 bbl of cement to surface. Top of cement is 0 ft | | | | | | | | | |

2.0 Real-Time Job Summary

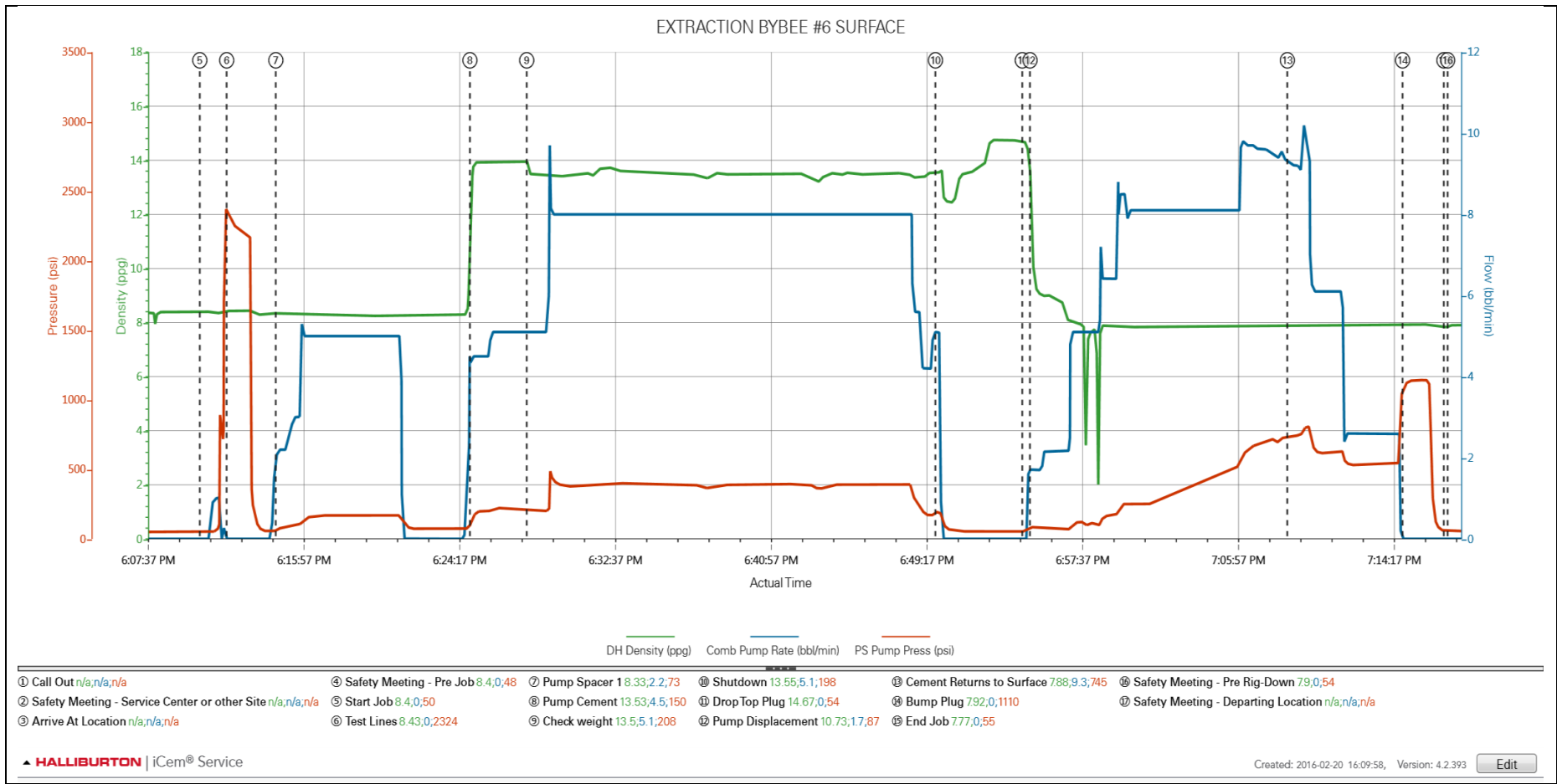
2.1 Job Event Log

| Type | Seq. No. | Activity | Graph Label | Date | Time | Source | Downhole Density (ppg) | Combined Pump Rate (bbl/min) | Pass-Side Pump Pressure (psi) | Comments |
|-------|----------|---|---|-----------|----------|--------|---------------------------|---------------------------------|----------------------------------|---|
| Event | 1 | Call Out | Call Out | 2/20/2016 | 11:30:00 | USER | | | | Crew called out at 11:30 to be on location at 15:30. Crew was Chris Pickell, Nick Roles, Joe Scileppi |
| Event | 2 | Safety Meeting - Service Center or other Site | Safety Meeting - Service Center or other Site | 2/20/2016 | 14:30:00 | USER | | | | Safety meeting held for journey, equipment double checked. Left the yard for Patterson 346 |
| Event | 3 | Arrive At Loc | Arrive At Location | 2/20/2016 | 15:00:00 | USER | | | | Arrive on location 30 minutes early. Rig had 1200 ft of casing left to run |
| Event | 4 | Safety Meeting - Pre Job | Safety Meeting - Pre Job | 2/20/2016 | 17:55:00 | USER | | | | Safety meeting held with rig crew to discuss job safety and procedure |
| Event | 5 | Start Job | Start Job | 2/20/2016 | 18:10:30 | COM6 | | | | |
| Event | 6 | Test Lines | Test Lines | 2/20/2016 | 18:11:56 | COM6 | 8.43 | 0.00 | 2324.00 | Pressure test lines to 2500 psi. Checked for visible leaks and pressure loss |
| Event | 7 | Pump Spacer 1 | Pump Spacer 1 | 2/20/2016 | 18:14:34 | COM6 | 8.33 | 2.20 | 73.00 | Pump 30 bbl of water spacer |
| Event | 8 | Pump Cement | Pump Cement | 2/20/2016 | 18:24:57 | COM6 | 13.53 | 4.50 | 150.00 | Pump 590 sks 183 bbl of Swiftcem cement 13.5 ppg 1.74 yield 9.2 gal/sk |
| Event | 9 | Check Weight | Check weight | 2/20/2016 | 18:28:00 | COM6 | 13.50 | 5.10 | 208.00 | Cement scaled at 13.5 ppg |
| Event | 10 | Shutdown | Shutdown | 2/20/2016 | 18:49:52 | USER | 13.55 | 5.10 | 198.00 | |
| Event | 11 | Drop Top Plug | Drop Top Plug | 2/20/2016 | 18:54:31 | COM6 | 14.67 | 0.00 | 54.00 | Top plug loaded and dropped while shutdown |
| Event | 12 | Pump Displacement | Pump Displacement | 2/20/2016 | 18:54:55 | COM6 | 10.73 | 1.70 | 87.00 | Pump displacement using water. Pumps and lines washed on top of the plug |
| Event | 13 | Cement Returns to Surface | Cement Returns to Surface | 2/20/2016 | 19:08:42 | USER | 7.88 | 9.30 | 745.00 | Cement returns to surface with 88 bbl away |
| Event | 14 | Bump Plug | Bump Plug | 2/20/2016 | 19:14:52 | COM6 | 7.92 | 0.00 | 1110.00 | Plug landed at calculated 120.2 bbl. Plug landed with 580 psi shutting down with 1125 psi |

| | | | | | | | | | | |
|-------|----|-------------------------------------|-------------------------------------|-----------|----------|------|------|------|-------|---|
| Event | 15 | End Job | End Job | 2/20/2016 | 19:17:04 | COM6 | 7.77 | 0.00 | 55.00 | Returned all spacer and 32 bbl of cement to surface |
| Event | 16 | Safety Meeting - Pre Rig-Down | Safety Meeting - Pre Rig-Down | 2/20/2016 | 19:17:16 | USER | | | | Safety meeting held for rig down. Rigged down all equipment |
| Event | 17 | Safety Meeting - Departing Location | Safety Meeting - Departing Location | 2/20/2016 | 20:30:00 | USER | | | | Safety meeting held for journey. Left location for the yard |

3.0 Attachments

3.1 BYBEE #6-Custom Results (1).png



3.2 BYBEE #6-Custom Results (2).png

