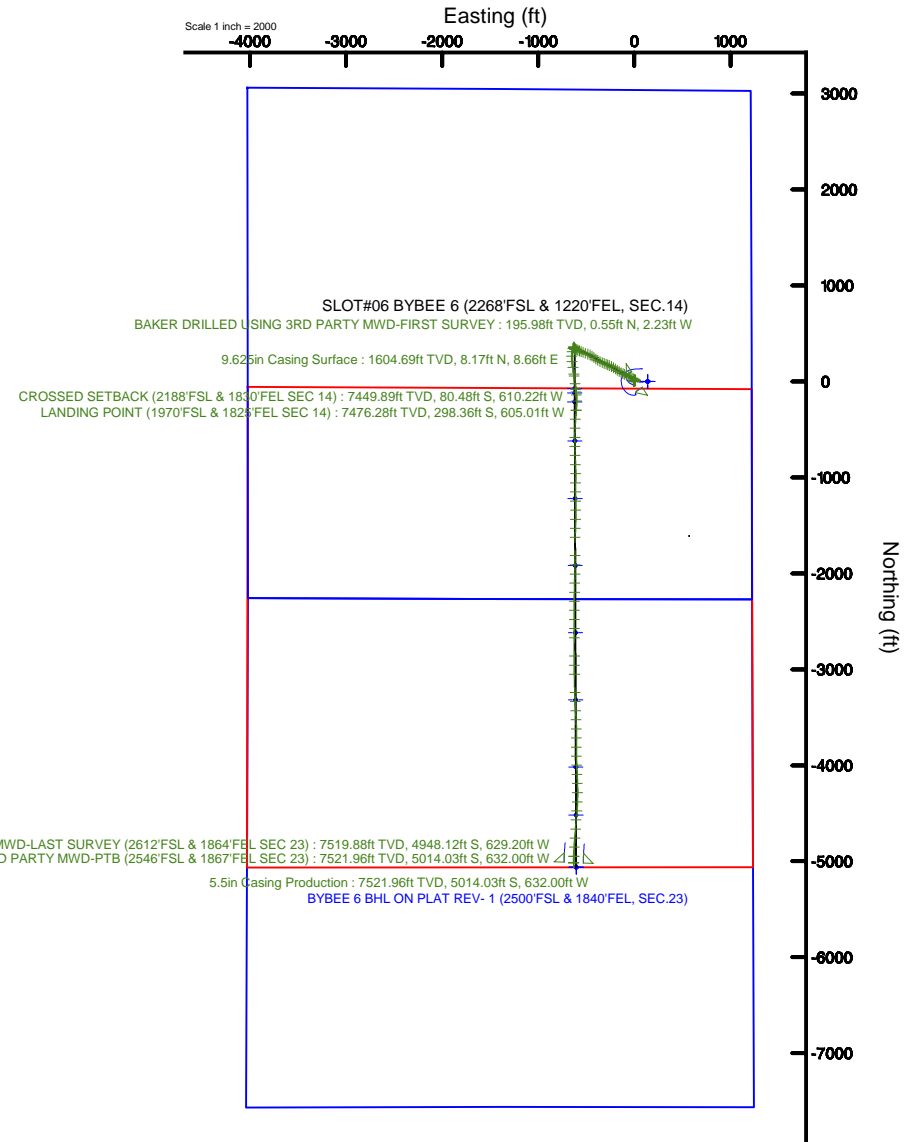
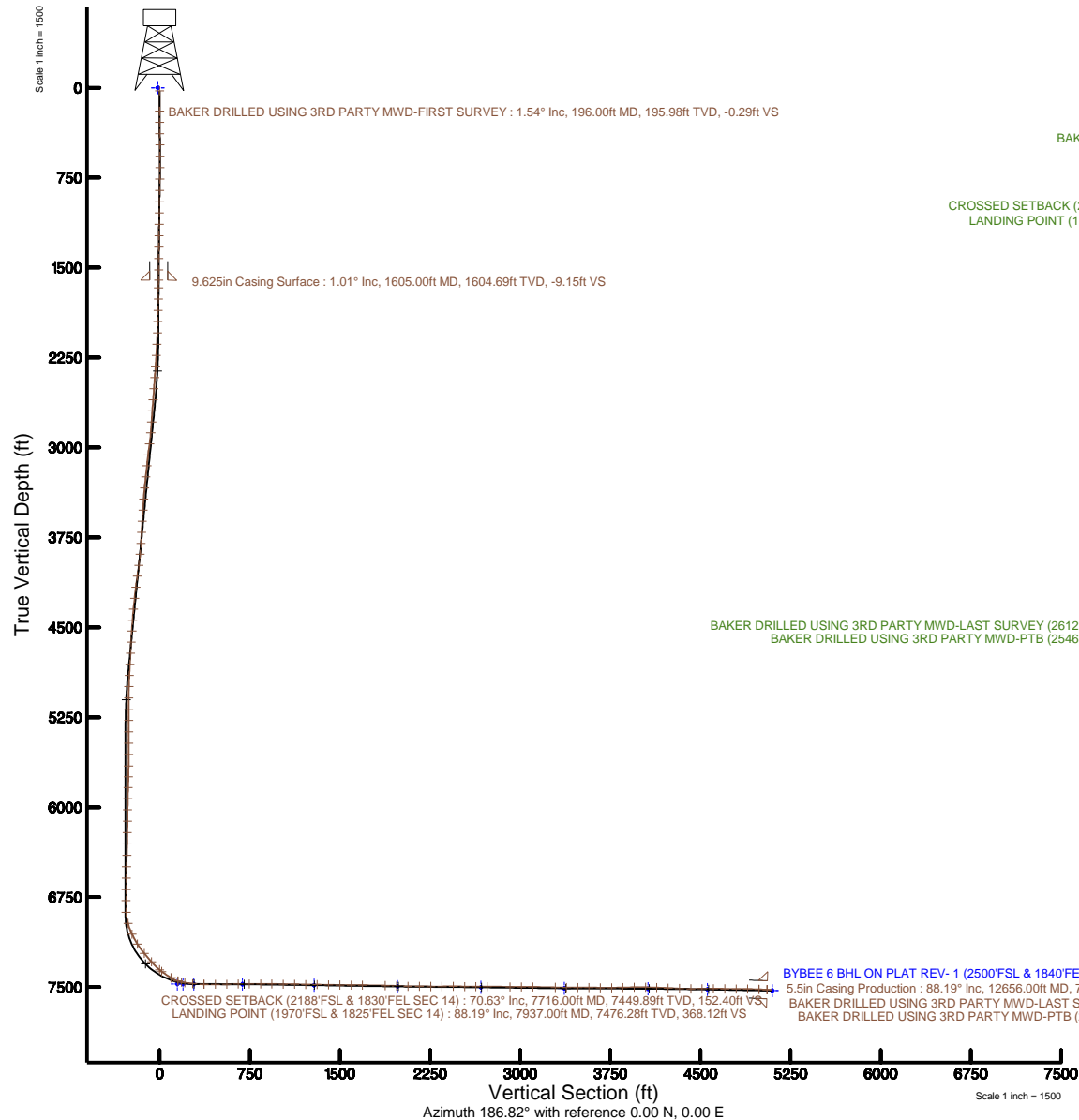


# EXTRACTION OIL & GAS

Location: COLORADO Slot: SLOT#06 BYBEE 6 (2268'FSL & 1220'FEL, SEC.14)  
Field: WELD COUNTY (NAD83/TRUE NORTH) Well: BYBEE 6  
Facility: SEC.14-T02N-R68W Wellbore: BYBEE 6 PWB

Plot reference wellpath is BYBEE 6 PWP (REV-C.0)	Grid System: NAD83 / Lambert Colorado SP, Northern Zone (501), US feet
True vertical depths are referenced to PATTERSON 346 (25'KB) (RKB)	* = Wellpath was transformed from a different geodetic datum
Measured depths are referenced to PATTERSON 346 (25'KB) (RKB)	North Reference: True north
PATTERSON 346 (25'KB) (RKB) to Mean Sea Level: 4914 feet	Scale: True distance
Mean Sea Level to Ground level (At Slot: SLOT#06 BYBEE 6 (2268'FSL & 1220'FEL, SEC.14)): 0 feet	Depths are in feet
Coordinates are in feet referenced to Slot	Created by: wagnijam on 2016-03-31
	Database: WA_DEN_Denver_Defn





# Actual Wellpath Report

BYBEE 6 AWP

Page 1 of 9



## REFERENCE WELLPATH IDENTIFICATION

Operator	EXTRACTION OIL & GAS	Slot	SLOT#06 BYBEE 6 (2268'FSL & 1220'FEL, SEC.14)
Area	COLORADO	Well	BYBEE 6
Field	WELD COUNTY (NAD83/TRUE NORTH)	Wellbore	BYBEE 6 AWB
Facility	SEC.14-T02N-R68W		

## REPORT SETUP INFORMATION

Projection System	NAD83 / Lambert Colorado SP, Northern Zone (501), US feet	Software System	WellArchitect® 5.0
North Reference	True	User	Wagnjam
Scale	0.999959	Report Generated	3/31/2016 at 2:48:07 PM
Convergence at slot	0.35° East	Database/Source file	WA_DEN_Denver_Defn/BYBEE_6_AWP.xml

## WELLPATH LOCATION

	Local coordinates		Grid coordinates		Geographic coordinates	
	North[ft]	East[ft]	Easting[US ft]	Northing[US ft]	Latitude	Longitude
Slot Location	0.71	-140.11	3149474.41	1293444.87	40°08'15.587"N	104°57'55.343"W
Facility Reference Pt			3149614.52	1293445.00	40°08'15.580"N	104°57'53.539"W
Field Reference Pt			3185481.27	1419166.81	40°28'55.560"N	104°49'59.556"W

## WELLPATH DATUM

Calculation method	Minimum curvature	PATTERSON 346 (25'KB) (RKB) to Facility Vertical Datum	4914.00ft
Horizontal Reference Pt	Slot	PATTERSON 346 (25'KB) (RKB) to Mean Sea Level	4914.00ft
Vertical Reference Pt	PATTERSON 346 (25'KB) (RKB)	PATTERSON 346 (25'KB) (RKB) to Ground Level at Slot (SLOT#06 BYBEE 6 (2268'FSL & 1220'FEL, SEC.14))	4914.00ft
MD Reference Pt	PATTERSON 346 (25'KB) (RKB)	Section Origin	N 0.00, E 0.00 ft
Field Vertical Reference	Mean Sea Level	Section Azimuth	186.82°

REFERENCE WELLPATH IDENTIFICATION			
Operator	EXTRACTION OIL & GAS	Slot	SLOT#06 BYBEE 6 (2268'FSL & 1220'FEL, SEC.14)
Area	COLORADO	Well	BYBEE 6
Field	WELD COUNTY (NAD83/TRUE NORTH)	Wellbore	BYBEE 6 AWB
Facility	SEC.14-T02N-R68W		

WELLPATH DATA (134 stations) † = interpolated/extrapolated station								
MD [ft]	Inclination [°]	Azimuth [°]	TVD [ft]	Vert Sect [ft]	North [ft]	East [ft]	DLS [°/100ft]	Comments
0.00†	0.000	283.970	0.00	0.00	0.00	0.00	0.00	
25.00	0.000	283.970	25.00	0.00	0.00	0.00	0.00	
196.00	1.540	283.970	195.98	-0.29	0.55	-2.23	0.90	BAKER DRILLED USING 3RD PARTY MWD-FIRST SURVEY
288.00	1.990	278.790	287.94	-0.49	1.10	-5.01	0.52	
383.00	0.920	238.550	382.91	-0.08	0.95	-7.29	1.49	
477.00	1.060	201.020	476.89	1.23	-0.25	-8.24	0.69	
572.00	0.350	124.550	571.89	2.22	-1.24	-8.32	1.09	
666.00	1.110	58.730	665.88	1.79	-0.93	-7.31	1.08	
761.00	1.390	53.800	760.86	0.44	0.23	-5.59	0.32	
856.00	1.230	43.800	855.83	-1.16	1.65	-3.95	0.29	
951.00	0.690	57.660	950.82	-2.34	2.69	-2.77	0.61	
1045.00	1.080	59.360	1044.81	-3.24	3.44	-1.52	0.42	
1140.00	1.360	64.080	1139.78	-4.39	4.39	0.26	0.31	
1235.00	1.220	57.100	1234.76	-5.65	5.43	2.12	0.22	
1329.00	1.190	65.710	1328.74	-6.79	6.38	3.85	0.20	
1424.00	1.100	65.030	1423.72	-7.78	7.17	5.58	0.10	
1519.00	1.020	80.860	1518.71	-8.49	7.69	7.24	0.32	
1669.00	1.080	47.650	1668.68	-9.93	8.85	9.60	0.40	
1763.00	1.200	45.550	1762.66	-11.37	10.14	10.96	0.14	
1857.00	0.980	33.850	1856.65	-12.85	11.50	12.11	0.33	
1951.00	2.500	326.870	1950.61	-15.14	13.88	11.44	2.45	
2046.00	3.900	309.680	2045.46	-18.48	17.68	7.82	1.77	
2140.00	7.120	302.790	2139.01	-22.77	22.88	0.46	3.49	
2234.00	8.630	301.460	2232.12	-28.26	29.71	-10.45	1.62	
2329.00	9.400	301.550	2325.95	-34.48	37.49	-23.15	0.81	
2423.00	12.130	295.920	2418.29	-40.92	45.83	-38.57	3.11	
2518.00	14.390	293.080	2510.75	-47.49	54.82	-58.41	2.48	
2612.00	14.800	294.160	2601.72	-54.34	64.31	-80.11	0.52	
2707.00	12.890	294.070	2693.95	-61.10	73.60	-100.86	2.01	
2802.00	11.570	294.230	2786.80	-67.09	81.83	-119.22	1.39	



# Actual Wellpath Report

BYBEE 6 AWP

Page 3 of 9



## REFERENCE WELLPATH IDENTIFICATION

Operator	EXTRACTION OIL & GAS	Slot	SLOT#06 BYBEE 6 (2268'FSL & 1220'FEL, SEC.14)
Area	COLORADO	Well	BYBEE 6
Field	WELD COUNTY (NAD83/TRUE NORTH)	Wellbore	BYBEE 6 AWB
Facility	SEC.14-T02N-R68W		

## WELLPATH DATA (134 stations)

MD [ft]	Inclination [°]	Azimuth [°]	TVD [ft]	Vert Sect [ft]	North [ft]	East [ft]	DLS [°/100ft]	Comments
2896.00	13.540	299.460	2878.55	-74.15	91.11	-137.40	2.42	
2991.00	15.640	304.170	2970.48	-84.31	103.78	-157.69	2.54	
3085.00	13.880	304.440	3061.38	-95.36	117.27	-177.47	1.87	
3180.00	14.050	303.470	3153.57	-105.81	130.08	-196.49	0.30	
3275.00	15.010	301.670	3245.53	-116.15	142.89	-216.58	1.12	
3370.00	15.690	296.150	3337.14	-125.58	155.01	-238.58	1.70	
3465.00	12.470	293.560	3429.28	-132.78	164.78	-259.52	3.45	
3561.00	11.870	295.210	3523.12	-138.88	173.13	-277.95	0.72	
3656.00	11.350	294.220	3616.18	-144.76	181.12	-295.31	0.59	
3750.00	12.340	292.670	3708.17	-150.27	188.79	-313.02	1.11	
3845.00	14.410	290.270	3800.59	-155.79	196.80	-333.48	2.26	
3939.00	16.570	296.160	3891.18	-162.95	206.76	-356.48	2.84	
4034.00	16.700	301.150	3982.21	-173.06	219.80	-380.33	1.51	
4129.00	15.700	306.850	4073.44	-185.11	234.57	-402.29	1.98	
4224.00	14.170	306.970	4165.23	-197.39	249.27	-421.87	1.61	
4319.00	14.110	304.420	4257.35	-208.59	262.81	-440.71	0.66	
4414.00	15.440	295.390	4349.22	-217.98	274.78	-461.69	2.80	
4509.00	16.370	291.310	4440.59	-225.36	285.06	-485.59	1.53	
4603.00	16.110	291.140	4530.83	-231.90	294.58	-510.10	0.28	
4698.00	14.900	289.910	4622.38	-237.92	303.50	-533.88	1.32	
4793.00	12.180	293.070	4714.73	-243.50	311.58	-554.58	2.97	
4887.00	10.060	293.160	4806.96	-248.58	318.70	-571.26	2.26	
4982.00	9.210	293.440	4900.62	-253.09	324.99	-585.86	0.90	
5076.00	6.440	292.330	4993.73	-256.65	329.98	-597.64	2.95	
5170.00	3.830	282.780	5087.35	-258.39	332.68	-605.58	2.91	
5265.00	1.350	269.400	5182.25	-258.57	333.37	-609.79	2.67	
5359.00	1.110	269.630	5276.22	-258.31	333.35	-611.81	0.26	
5454.00	1.020	270.700	5371.21	-258.11	333.36	-613.58	0.10	
5548.00	0.750	284.750	5465.20	-258.10	333.52	-615.01	0.37	
5643.00	0.890	293.770	5560.19	-258.40	333.98	-616.29	0.20	



# Actual Wellpath Report

BYBEE 6 AWP

Page 4 of 9



## REFERENCE WELLPATH IDENTIFICATION

Operator	EXTRACTION OIL & GAS	Slot	SLOT#06 BYBEE 6 (2268'FSL & 1220'FEL, SEC.14)
Area	COLORADO	Well	BYBEE 6
Field	WELD COUNTY (NAD83/TRUE NORTH)	Wellbore	BYBEE 6 AWP
Facility	SEC.14-T02N-R68W		

## WELLPATH DATA (134 stations)

MD [ft]	Inclination [°]	Azimuth [°]	TVD [ft]	Vert Sect [ft]	North [ft]	East [ft]	DLS [°/100ft]	Comments
5738.00	0.870	323.140	5655.18	-259.14	334.85	-617.39	0.47	
5828.00	1.200	349.090	5745.16	-260.53	336.33	-617.98	0.63	
5920.00	1.950	349.110	5837.13	-262.94	338.81	-618.46	0.82	
6012.00	1.450	338.780	5929.09	-265.46	341.43	-619.18	0.64	
6104.00	1.140	324.160	6021.06	-267.16	343.26	-620.13	0.49	
6199.00	1.170	310.760	6116.04	-268.40	344.66	-621.42	0.29	
6294.00	1.240	323.210	6211.02	-269.68	346.12	-622.77	0.28	
6389.00	1.650	331.080	6305.99	-271.54	348.14	-624.05	0.48	
6484.00	2.040	319.890	6400.94	-273.80	350.63	-625.80	0.56	
6579.00	2.670	321.720	6495.86	-276.52	353.66	-628.26	0.67	
6674.00	0.650	281.870	6590.82	-278.13	355.50	-630.16	2.33	
6769.00	0.920	343.820	6685.81	-278.88	356.35	-630.90	0.88	
6863.00	1.710	336.760	6779.79	-280.78	358.36	-631.66	0.86	
6959.00	3.900	223.410	6875.71	-279.40	357.30	-634.47	5.04	
7055.00	15.930	195.690	6970.14	-263.70	342.19	-640.30	13.13	
7150.00	25.560	189.710	7058.88	-230.27	309.36	-647.30	10.37	
7245.00	32.140	182.440	7142.07	-184.54	263.84	-651.84	7.84	
7340.00	41.070	172.000	7218.33	-129.01	207.53	-648.56	11.43	
7435.00	42.060	170.120	7289.41	-68.36	145.27	-638.76	1.68	
7531.00	50.370	172.880	7355.79	-1.56	76.78	-628.64	8.90	
7555.00	53.540	173.950	7370.58	16.83	58.01	-626.48	13.67	
7651.00	60.310	173.660	7422.94	95.15	-21.92	-617.79	7.06	
7716.00	70.630	171.690	7449.89	152.40	-80.48	-610.22	16.11	CROSSED SETBACK (2188'FSL & 1830'FEL SEC 14)
7747.00	76.340	172.400	7458.70	181.13	-109.90	-606.12	18.55	
7777.00	81.650	174.030	7464.42	209.74	-139.13	-602.64	18.49	
7842.00	85.970	181.210	7471.44	273.47	-203.64	-599.98	12.83	
7937.00	88.190	184.870	7476.28	368.12	-298.36	-605.01	4.50	LANDING POINT (1970'FSL & 1825'FEL SEC 14)
8032.00	90.370	184.650	7477.48	463.05	-393.02	-612.89	2.31	
8127.00	91.240	181.370	7476.14	557.81	-487.87	-617.88	3.57	
8222.00	90.500	179.740	7474.70	652.23	-582.85	-618.80	1.88	

## REFERENCE WELLPATH IDENTIFICATION

Operator	EXTRACTION OIL & GAS	Slot	SLOT#06 BYBEE 6 (2268'FSL & 1220'FEL, SEC.14)
Area	COLORADO	Well	BYBEE 6
Field	WELD COUNTY (NAD83/TRUE NORTH)	Wellbore	BYBEE 6 AWB
Facility	SEC.14-T02N-R68W		

## WELLPATH DATA (134 stations)

MD [ft]	Inclination [°]	Azimuth [°]	TVD [ft]	Vert Sect [ft]	North [ft]	East [ft]	DLS [°/100ft]	Comments
8317.00	90.440	179.830	7473.92	746.51	-677.84	-618.44	0.11	
8411.00	89.630	178.090	7473.86	839.62	-771.82	-616.74	2.04	
8506.00	89.200	177.870	7474.83	933.49	-866.76	-613.39	0.51	
8601.00	89.230	180.040	7476.13	1027.58	-961.73	-611.66	2.28	
8696.00	89.190	180.590	7477.44	1121.96	-1056.72	-612.18	0.58	
8790.00	89.230	179.740	7478.74	1215.32	-1150.71	-612.45	0.91	
8885.00	89.090	179.630	7480.13	1309.57	-1245.70	-611.93	0.19	
8981.00	88.630	178.960	7482.04	1404.72	-1341.67	-610.75	0.85	
9076.00	89.760	182.170	7483.38	1499.13	-1436.64	-611.68	3.58	
9171.00	89.660	181.410	7483.86	1593.77	-1531.59	-614.65	0.81	
9265.00	89.260	180.490	7484.74	1687.27	-1625.58	-616.21	1.07	
9455.00	88.620	179.700	7488.26	1875.92	-1815.54	-616.52	0.54	
9550.00	87.950	179.660	7491.10	1970.14	-1910.50	-615.99	0.71	
9646.00	88.930	181.830	7493.71	2065.56	-2006.45	-617.24	2.48	
9741.00	89.660	181.510	7494.88	2160.17	-2101.40	-620.01	0.84	
9837.00	89.360	180.820	7495.70	2255.70	-2197.37	-621.96	0.78	
9931.00	90.670	180.970	7495.68	2349.19	-2291.36	-623.43	1.40	
10025.00	90.030	180.110	7495.11	2442.63	-2385.35	-624.32	1.14	
10120.00	88.760	179.460	7496.11	2536.90	-2480.34	-623.96	1.50	
10215.00	90.130	179.860	7497.03	2631.16	-2575.34	-623.40	1.50	
10310.00	89.900	179.360	7497.00	2725.40	-2670.33	-622.75	0.58	
10501.00	88.790	180.520	7499.19	2915.01	-2861.31	-622.55	0.84	
10596.00	90.400	180.210	7499.86	3009.40	-2956.31	-623.15	1.73	
10691.00	89.600	178.660	7499.86	3103.61	-3051.30	-622.22	1.84	
10881.00	88.290	178.380	7503.36	3291.58	-3241.20	-617.31	0.71	
10976.00	90.370	178.160	7504.47	3385.51	-3336.14	-614.44	2.20	
11071.00	89.700	176.930	7504.41	3479.27	-3431.05	-610.38	1.47	
11165.00	89.700	178.360	7504.90	3572.06	-3524.97	-606.51	1.52	
11260.00	88.830	179.300	7506.12	3666.13	-3619.94	-604.57	1.35	
11355.00	90.840	179.820	7506.39	3760.36	-3714.93	-603.84	2.19	

## REFERENCE WELLPATH IDENTIFICATION

Operator	EXTRACTION OIL & GAS	Slot	SLOT#06 BYBEE 6 (2268'FSL & 1220'FEL, SEC.14)
Area	COLORADO	Well	BYBEE 6
Field	WELD COUNTY (NAD83/TRUE NORTH)	Wellbore	BYBEE 6 AWB
Facility	SEC.14-T02N-R68W		

## WELLPATH DATA (134 stations)

MD [ft]	Inclination [°]	Azimuth [°]	TVD [ft]	Vert Sect [ft]	North [ft]	East [ft]	DLS [°/100ft]	Comments
11450.00	91.340	179.770	7504.59	3854.63	-3809.91	-603.50	0.53	
11545.00	91.510	179.820	7502.22	3948.89	-3904.88	-603.16	0.19	
11640.00	88.690	177.610	7502.06	4042.92	-3999.84	-601.03	3.77	
11735.00	88.050	177.570	7504.76	4136.65	-4094.72	-597.04	0.67	
11830.00	87.350	177.920	7508.57	4230.39	-4189.57	-593.31	0.82	
11926.00	87.210	180.290	7513.13	4325.40	-4285.44	-591.81	2.47	
12021.00	89.830	181.210	7515.58	4419.83	-4380.40	-593.05	2.92	
12115.00	90.440	185.690	7515.36	4513.64	-4474.20	-598.71	4.81	
12210.00	89.930	183.070	7515.06	4608.55	-4568.91	-605.96	2.81	
12305.00	89.200	182.640	7515.78	4703.31	-4663.79	-610.69	0.89	
12400.00	90.200	185.030	7516.27	4798.18	-4758.57	-617.05	2.73	
12495.00	88.630	183.610	7517.24	4893.07	-4853.29	-624.20	2.23	
12590.00	88.190	182.430	7519.88	4987.83	-4948.12	-629.20	1.33	BAKER DRILLED USING 3RD PARTY MWD-LAST SURVEY (2612'FSL & 1864'FEL SEC 23)
12656.00	88.190	182.430	7521.96	5053.60	-5014.03	-632.00	0.00	BAKER DRILLED USING 3RD PARTY MWD-PTB (2546'FSL & 1867'FEL SEC 23)

## HOLE & CASING SECTIONS - Ref Wellbore: BYBEE 6 AWB Ref Wellpath: BYBEE 6 AWP

String/Diameter	Start MD [ft]	End MD [ft]	Interval [ft]	Start TVD [ft]	End TVD [ft]	Start N/S [ft]	Start E/W [ft]	End N/S [ft]	End E/W [ft]
13.5in Open Hole	25.00	1605.00	1580.00	25.00	1604.69	0.00	0.00	8.17	8.66
9.625in Casing Surface	25.00	1605.00	1580.00	25.00	1604.69	0.00	0.00	8.17	8.66
7.875in Open Hole	1605.00	12656.00	11051.00	1604.69	7521.96	8.17	8.66	-5014.03	-632.00
5.5in Casing Production	25.00	12656.00	12631.00	25.00	7521.96	0.00	0.00	-5014.03	-632.00



# Actual Wellpath Report

BYBEE 6 AWP

Page 7 of 9



REFERENCE WELLPATH IDENTIFICATION			
Operator	EXTRACTION OIL & GAS	Slot	SLOT#06 BYBEE 6 (2268'FSL & 1220'FEL, SEC.14)
Area	COLORADO	Well	BYBEE 6
Field	WELD COUNTY (NAD83/TRUE NORTH)	Wellbore	BYBEE 6 AWP
Facility	SEC.14-T02N-R68W		

TARGETS								
Name	TVD [ft]	North [ft]	East [ft]	Grid East [US ft]	Grid North [US ft]	Latitude	Longitude	Shape
SEC.14-T02N-R62W	0.00	-0.71	140.11	3149614.52	1293445.00	40°08'15.580"N	104°57'53.539"W	polygon
SEC.23-T02N-R62W	0.00	-0.71	140.11	3149614.52	1293445.00	40°08'15.580"N	104°57'53.539"W	polygon
BYBEE 6 BHL ON PLAT (2500'FSL & 1840'FEL, SEC.23)	7475.00	-5060.44	-605.44	3148899.51	1288381.09	40°07'25.579"N	104°58'03.137"W	point
BYBEE 6 LANDING POINT ON PLAT (2194'FSL & 1840'FEL, SEC.14)	7475.00	-73.24	-620.14	3148854.75	1293367.89	40°08'14.863"N	104°58'03.328"W	point
BYBEE 6 LANDING POINT REV-1 (2150'FSL & 1840'FEL, SEC.14)	7475.00	-120.00	-620.17	3148855.00	1293321.13	40°08'14.401"N	104°58'03.328"W	point
BYBEE 6 TARGET 1	7475.00	-211.80	-620.06	3148855.66	1293229.34	40°08'13.494"N	104°58'03.327"W	point
SEC.14/23-T02N-R62W SETBACK (460' 1/2 SECTION LINE (14) & 2500'FSL, SEC.23)	7475.00	-0.71	140.11	3149614.52	1293445.00	40°08'15.580"N	104°57'53.539"W	polygon
BYBEE 6 TARGET 2	7476.00	-619.01	-618.83	3148859.35	1292822.16	40°08'09.470"N	104°58'03.311"W	point
BYBEE 6 TARGET 3	7484.00	-1218.96	-617.02	3148864.78	1292222.26	40°08'03.541"N	104°58'03.287"W	point
BYBEE 6 TARGET 4	7495.00	-1918.92	-614.91	3148871.11	1291522.36	40°07'56.624"N	104°58'03.260"W	point
BYBEE 6 TARGET 5	7502.00	-2618.87	-612.80	3148877.44	1290822.46	40°07'49.707"N	104°58'03.232"W	point
BYBEE 6 TARGET 6	7511.00	-3318.82	-610.69	3148883.77	1290122.57	40°07'42.790"N	104°58'03.205"W	point





# Actual Wellpath Report

BYBEE 6 AWP

Page 8 of 9



## REFERENCE WELLPATH IDENTIFICATION

Operator	EXTRACTION OIL & GAS	Slot	SLOT#06 BYBEE 6 (2268'FSL & 1220'FEL, SEC.14)
Area	COLORADO	Well	BYBEE 6
Field	WELD COUNTY (NAD83/TRUE NORTH)	Wellbore	BYBEE 6 AWB
Facility	SEC.14-T02N-R68W		

## TARGETS

Name	TVD [ft]	North [ft]	East [ft]	Grid East [US ft]	Grid North [US ft]	Latitude	Longitude	Shape
BYBEE 6 TARGET 7	7514.00	-4018.77	-608.58	3148890.10	1289422.67	40°07'35.873"N	104°58'03.178"W	point
BYBEE 6 TARGET 8	7520.00	-4518.74	-607.07	3148894.62	1288922.74	40°07'30.932"N	104°58'03.158"W	point
BYBEE 6 BHL ON PLAT REV- 1 (2500'FSL & 1840'FEL, SEC.23)	7530.00	-5060.44	-605.44	3148899.51	1288381.09	40°07'25.579"N	104°58'03.137"W	point
BYBEE 6 TARGET 9	7530.00	-5060.44	-605.44	3148899.52	1288381.09	40°07'25.579"N	104°58'03.137"W	point

## WELLPATH COMPOSITION - Ref Wellbore: BYBEE 6 AWB Ref Wellpath: BYBEE 6 AWP

Start MD [ft]	End MD [ft]	Positional Uncertainty Model	Log Name/Comment	Wellbore
25.00	1519.00	ISCWSA MWD, Rev. 3 (Standard)	BAKER HANDS DRILLED USING 3RD PARTY MWD 13.5" HOLE <196-1519>	BYBEE 6 AWB
1519.00	12590.00	ISCWSA MWD, Rev. 3 (Standard)	BAKER HANDS DRILLED USING 3RD PARTY MWD <1669-12590>	BYBEE 6 AWB
12590.00	12656.00	Blind Drilling (std)	Projection to bit	BYBEE 6 AWB



# Actual Wellpath Report

BYBEE 6 AWP

Page 9 of 9



## REFERENCE WELLPATH IDENTIFICATION

Operator	EXTRACTION OIL & GAS	Slot	SLOT#06 BYBEE 6 (2268'FSL & 1220'FEL, SEC.14)
Area	COLORADO	Well	BYBEE 6
Field	WELD COUNTY (NAD83/TRUE NORTH)	Wellbore	BYBEE 6 AWB
Facility	SEC.14-T02N-R68W		

## WELLPATH COMMENTS

MD [ft]	Inclination [°]	Azimuth [°]	TVD [ft]	Comment
196.00	1.540	283.970	195.98	BAKER DRILLED USING 3RD PARTY MWD-FIRST SURVEY
7716.00	70.630	171.690	7449.89	CROSSED SETBACK (2188'FSL & 1830'FEL SEC 14)
7937.00	88.190	184.870	7476.28	LANDING POINT (1970'FSL & 1825'FEL SEC 14)
12590.00	88.190	182.430	7519.88	BAKER DRILLED USING 3RD PARTY MWD-LAST SURVEY (2612'FSL & 1864'FEL SEC 23)
12656.00	88.190	182.430	7521.96	BAKER DRILLED USING 3RD PARTY MWD-PTB (2546'FSL & 1867'FEL SEC 23)