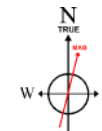


# EXTRACTION OIL & GAS

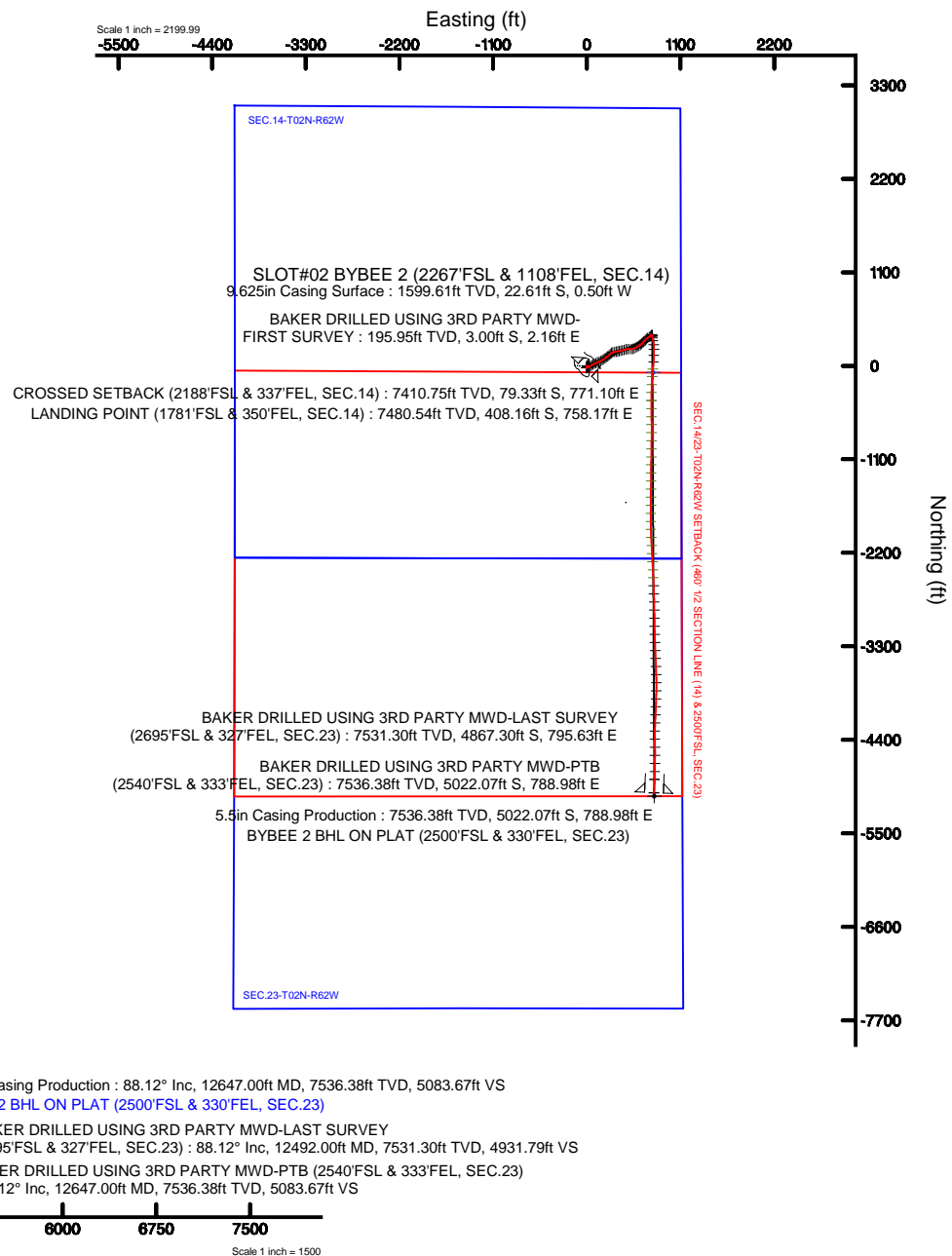
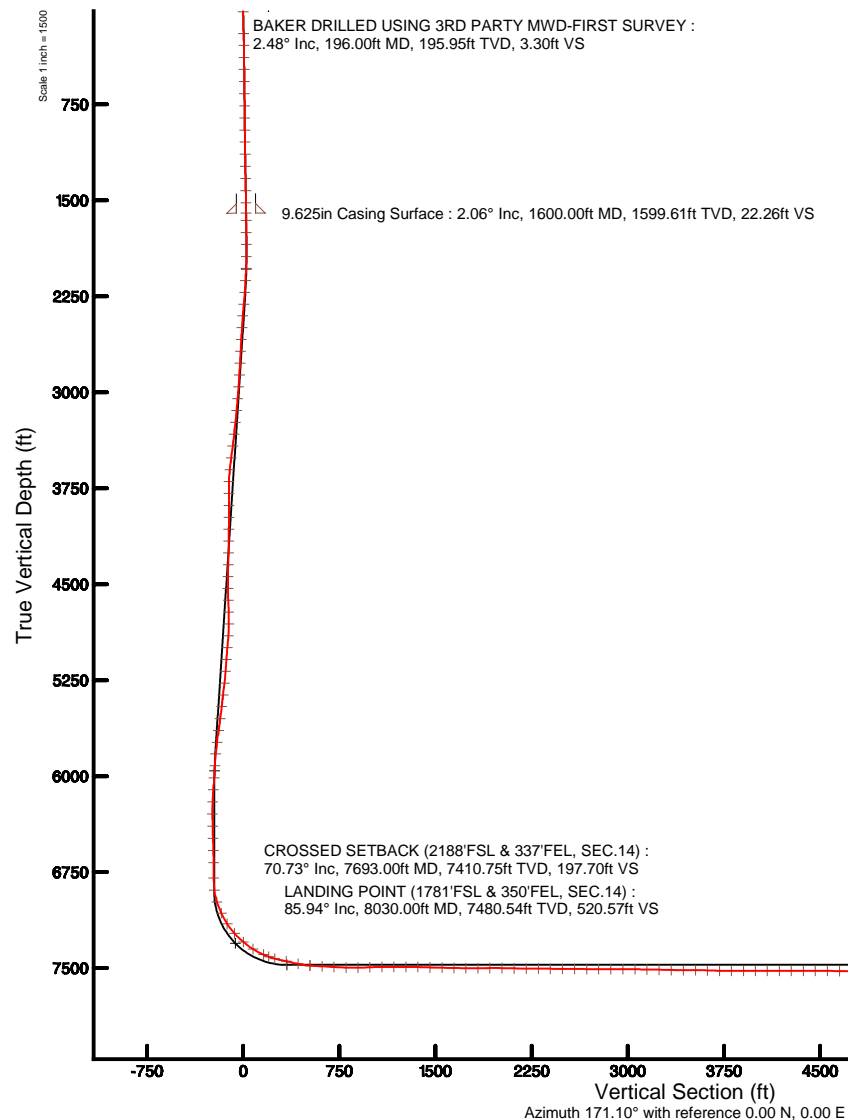
Location: COLORADO Slot: SLOT#02 BYBEE 2 (2267'FSL & 1108'FEL, SEC.14)  
Field: WELD COUNTY (NAD83/TRUE NORTH) Well: BYBEE 2  
Facility: SEC.14-T02N-R62W Wellbore: BYBEE 2 PWB

Plot reference wellpath is BYBEE 2 PWP (REV-B.0)	Grid System: NAD83 / Lambert Colorado SP, Northern Zone (501), US feet
True vertical depths are referenced to PATTERSON 346 (25'KB) (RKB)	" = Wellpath was transformed from a different geodetic datum
Measured depths are referenced to PATTERSON 346 (25'KB) (RKB)	North Reference: True north
PATTERSON 346 (25'KB) (RKB) to Mean Sea Level: 4914 feet	Scale: True distance
Mean Sea Level to Ground level (At Slot: SLOT#02 BYBEE 2 (2267'FSL & 1108'FEL, SEC.14)): 0 feet	Depths are in feet
Coordinates are in feet referenced to Slot	Created by: ingmjmr on 2016-03-02
	Database: WA_DEN_Denver_Defn



BGGM (1945.0 to 2017.0) Dip: 66.70° Field: 52389.7 nT  
Magnetic North is 8.59 degrees East of True North (at 2/10/2016)

To correct azimuth from Magnetic to True add 8.59 degrees





# Actual Wellpath Report

BYBEE 2 AWP

Page 1 of 6



## REFERENCE WELLPATH IDENTIFICATION

Operator	EXTRACTION OIL & GAS	Slot	SLOT#02 BYBEE 2 (2267'FSL & 1108'FEL, SEC.14)
Area	COLORADO	Well	BYBEE 2
Field	WELD COUNTY (NAD83/TRUE NORTH)	Wellbore	BYBEE 2 AWP
Facility	SEC.14-T02N-R68W		

## REPORT SETUP INFORMATION

Projection System	NAD83 / Lambert Colorado SP, Northern Zone (501), US feet	Software System	WellArchitect® 5.0
North Reference	True	User	Ingmjmr
Scale	0.999959	Report Generated	3/2/2016 at 9:15:39 AM
Convergence at slot	0.35° East	Database/Source file	WA_DEN_Denver_Defn/BYBEE_2_AWP.xml

## WELLPATH LOCATION

	Local coordinates		Grid coordinates		Geographic coordinates	
	North[ft]	East[ft]	Easting[US ft]	Northing[US ft]	Latitude	Longitude
Slot Location	0.00	-28.27	3149586.25	1293444.83	40°08'15.580"N	104°57'53.903"W
Facility Reference Pt			3149614.52	1293445.00	40°08'15.580"N	104°57'53.539"W
Field Reference Pt			3185481.27	1419166.81	40°28'55.560"N	104°49'59.556"W

## WELLPATH DATUM

Calculation method	Minimum curvature	PATTERSON 346 (25'KB) (RKB) to Facility Vertical Datum	4914.00ft
Horizontal Reference Pt	Slot	PATTERSON 346 (25'KB) (RKB) to Mean Sea Level	4914.00ft
Vertical Reference Pt	PATTERSON 346 (25'KB) (RKB)	PATTERSON 346 (25'KB) (RKB) to Ground Level at Slot (SLOT#02 BYBEE 2 (2267'FSL & 1108'FEL, SEC.14))	4914.00ft
MD Reference Pt	PATTERSON 346 (25'KB) (RKB)	Section Origin	N 0.00, E 0.00 ft
Field Vertical Reference	Mean Sea Level	Section Azimuth	171.10°

REFERENCE WELLPATH IDENTIFICATION			
Operator	EXTRACTION OIL & GAS	Slot	SLOT#02 BYBEE 2 (2267'FSL & 1108'FEL, SEC.14)
Area	COLORADO	Well	BYBEE 2
Field	WELD COUNTY (NAD83/TRUE NORTH)	Wellbore	BYBEE 2 AWB
Facility	SEC.14-T02N-R68W		

WELLPATH DATA (134 stations) † = interpolated/extrapolated station								
MD [ft]	Inclination [°]	Azimuth [°]	TVD [ft]	Vert Sect [ft]	North [ft]	East [ft]	DLS [°/100ft]	Comments
0.00†	0.000	144.290	0.00	0.00	0.00	0.00	0.00	
25.00	0.000	144.290	25.00	0.00	0.00	0.00	0.00	
196.00	2.480	144.290	195.95	3.30	-3.00	2.16	1.45	BAKER DRILLED USING 3RD PARTY MWD-FIRST SURVEY
288.00	1.490	135.920	287.89	6.06	-5.48	4.15	1.12	
383.00	0.850	95.330	382.87	7.24	-6.43	5.71	1.06	
477.00	0.760	113.000	476.86	7.74	-6.74	6.98	0.28	
572.00	0.900	114.240	571.85	8.48	-7.29	8.24	0.15	
666.00	0.940	126.680	665.84	9.44	-8.06	9.53	0.22	
761.00	0.700	156.000	760.83	10.55	-9.05	10.40	0.50	
856.00	0.590	189.490	855.83	11.58	-10.07	10.55	0.41	
951.00	0.810	213.890	950.82	12.53	-11.11	10.10	0.38	
1045.00	1.010	214.590	1044.81	13.62	-12.34	9.25	0.21	
1140.00	1.300	210.190	1139.79	15.07	-13.96	8.24	0.32	
1235.00	1.300	220.520	1234.76	16.60	-15.71	7.00	0.25	
1329.00	1.390	212.600	1328.74	18.15	-17.48	5.69	0.22	
1424.00	1.690	222.960	1423.70	19.88	-19.48	4.11	0.43	
1519.00	1.820	235.090	1518.66	21.41	-21.37	1.92	0.41	
1657.00	2.290	257.700	1656.57	22.53	-23.21	-2.57	0.67	
1751.00	1.640	254.940	1750.52	22.79	-23.96	-5.70	0.70	
1846.00	0.820	159.370	1845.50	23.60	-24.95	-6.78	2.00	
1940.00	5.680	82.920	1939.34	24.40	-25.00	-1.92	5.90	
2034.00	10.430	67.490	2032.39	22.55	-21.17	10.57	5.51	
2129.00	10.910	61.340	2125.75	17.49	-13.57	26.40	1.30	
2223.00	8.460	58.540	2218.41	11.83	-5.69	40.10	2.65	
2317.00	12.770	57.100	2310.78	4.95	3.57	54.73	4.59	
2411.00	12.070	59.360	2402.58	-2.92	14.22	71.91	0.91	
2506.00	12.850	64.950	2495.34	-9.54	23.75	90.03	1.51	
2600.00	11.580	63.990	2587.21	-15.22	32.32	107.98	1.37	
2694.00	12.980	68.620	2679.06	-20.28	40.30	126.29	1.82	
2789.00	11.350	68.920	2771.93	-24.55	47.56	144.95	1.72	
2884.00	12.230	61.380	2864.93	-29.92	55.74	162.50	1.87	
2978.00	11.300	59.660	2956.95	-36.65	65.16	179.19	1.06	
3073.00	12.540	59.300	3049.90	-43.88	75.13	196.09	1.31	
3168.00	10.700	53.620	3142.95	-51.78	85.63	212.06	2.28	
3262.00	13.120	53.510	3234.92	-60.75	97.15	227.67	2.57	
3356.00	13.960	53.230	3326.31	-70.99	110.28	245.33	0.90	
3451.00	12.070	45.290	3418.87	-82.16	124.13	261.57	2.73	
3546.00	12.380	49.360	3511.72	-93.33	137.75	276.36	0.96	
3641.00	10.960	42.160	3604.76	-104.36	151.08	290.15	2.14	
3736.00	12.840	75.740	3697.82	-111.03	160.38	306.46	7.44	
3831.00	12.520	85.220	3790.51	-111.28	163.84	326.95	2.21	
3927.00	10.110	81.560	3884.64	-110.46	165.95	345.66	2.62	
4022.00	10.230	76.180	3978.15	-111.12	169.19	362.10	1.01	
4116.00	12.500	77.880	4070.30	-112.40	173.32	380.15	2.44	
4211.00	13.020	79.710	4162.96	-113.24	177.39	400.74	0.69	

REFERENCE WELLPATH IDENTIFICATION			
Operator	EXTRACTION OIL & GAS	Slot	SLOT#02 BYBEE 2 (2267'FSL & 1108'FEL, SEC.14)
Area	COLORADO	Well	BYBEE 2
Field	WELD COUNTY (NAD83/TRUE NORTH)	Wellbore	BYBEE 2 AWB
Facility	SEC.14-T02N-R68W		

WELLPATH DATA (134 stations) † = interpolated/extrapolated station								
MD [ft]	Inclination [°]	Azimuth [°]	TVD [ft]	Vert Sect [ft]	North [ft]	East [ft]	DLS [°/100ft]	Comments
4305.00	11.170	75.000	4254.87	-114.46	181.64	419.95	2.23	
4400.00	11.020	72.650	4348.09	-116.77	186.72	437.51	0.50	
4495.00	10.980	75.490	4441.35	-118.99	191.70	454.93	0.57	
4589.00	12.600	83.930	4533.37	-119.36	195.03	473.80	2.51	
4684.00	14.610	91.700	4625.71	-116.64	195.77	496.08	2.86	
4780.00	13.550	87.090	4718.83	-113.24	195.98	519.41	1.61	
4875.00	11.620	79.520	4811.54	-112.34	198.28	539.94	2.67	
4969.00	13.500	63.540	4903.32	-115.92	204.90	559.08	4.18	
5064.00	13.260	58.060	4995.74	-123.53	215.60	578.25	1.36	
5158.00	11.120	58.530	5087.62	-131.22	226.04	595.13	2.28	
5253.00	11.860	63.790	5180.72	-137.64	235.13	611.71	1.35	
5348.00	13.710	53.540	5273.37	-145.76	246.14	629.52	3.07	
5442.00	12.880	46.310	5364.86	-156.89	260.00	646.06	1.98	
5536.00	9.980	40.400	5456.99	-168.18	273.44	658.92	3.32	
5631.00	11.680	40.880	5550.29	-179.76	286.98	670.55	1.79	
5725.00	12.460	44.090	5642.21	-192.01	301.46	683.83	1.09	
5820.00	13.740	49.060	5734.74	-204.16	316.21	699.48	1.79	
5914.00	12.360	54.620	5826.31	-214.57	329.35	716.12	1.98	
6008.00	10.400	63.030	5918.47	-221.69	339.03	731.89	2.73	
6103.00	7.540	56.750	6012.30	-226.92	346.34	744.75	3.18	
6198.00	7.270	43.260	6106.51	-233.18	354.13	754.08	1.85	
6293.00	4.020	49.100	6201.04	-238.63	360.69	760.72	3.47	
6389.00	1.990	92.000	6296.91	-240.10	362.84	764.93	3.02	
6483.00	1.340	146.630	6390.88	-238.79	361.86	767.16	1.74	
6579.00	2.220	177.760	6486.83	-235.92	359.07	767.85	1.33	
6674.00	1.460	166.100	6581.79	-232.89	356.05	768.22	0.89	
6768.00	0.740	163.100	6675.77	-231.09	354.31	768.68	0.77	
6888.00	0.690	116.630	6795.76	-229.91	353.24	769.55	0.47	
6983.00	5.680	174.750	6890.59	-224.88	348.30	770.49	5.63	
7079.00	18.190	173.750	6984.33	-205.09	328.60	772.57	13.03	
7173.00	25.050	168.070	7071.67	-170.52	294.50	778.29	7.62	
7268.00	32.560	170.730	7154.86	-124.80	249.52	786.57	8.02	
7363.00	42.610	182.060	7230.14	-67.45	191.94	789.55	12.80	
7459.00	49.980	180.870	7296.43	0.77	122.61	787.82	7.73	
7554.00	58.900	184.640	7351.63	76.33	45.53	783.97	9.93	
7649.00	66.920	186.930	7394.86	158.06	-38.54	775.39	8.71	
7693.00†	70.731	185.104	7410.75	197.70	-79.33	771.10	9.49	CROSSED SETBACK (2188'FSL & 337'FEL, SEC.14)
7744.00	75.170	183.090	7425.70	245.19	-127.95	767.63	9.49	
7840.00	78.740	182.090	7447.37	336.83	-221.36	763.41	3.85	
7934.00	77.500	182.490	7466.72	427.06	-313.27	759.73	1.38	
8030.00	85.940	179.430	7480.54	520.57	-408.16	758.17	9.34	LANDING POINT (1781'FSL & 350'FEL, SEC.14)
8125.00	86.640	179.450	7486.68	614.36	-502.96	759.10	0.74	
8220.00	87.280	179.360	7491.72	708.23	-597.82	760.08	0.68	
8315.00	87.350	179.650	7496.17	802.11	-692.71	760.90	0.31	
8409.00	91.380	180.010	7497.21	894.99	-786.68	761.18	4.30	



# Actual Wellpath Report

BYBEE 2 AWP

Page 4 of 6



## REFERENCE WELLPATH IDENTIFICATION

Operator	EXTRACTION OIL & GAS	Slot	SLOT#02 BYBEE 2 (2267'FSL & 1108'FEL, SEC.14)
Area	COLORADO	Well	BYBEE 2
Field	WELD COUNTY (NAD83/TRUE NORTH)	Wellbore	BYBEE 2 AWB
Facility	SEC.14-T02N-R68W		

## WELLPATH DATA (134 stations)

MD [ft]	Inclination [°]	Azimuth [°]	TVD [ft]	Vert Sect [ft]	North [ft]	East [ft]	DLS [°/100ft]	Comments
8504.00	92.320	180.680	7494.15	988.71	-881.63	760.61	1.21	
8599.00	90.470	180.670	7491.83	1082.35	-976.59	759.49	1.95	
8694.00	90.130	181.400	7491.34	1175.93	-1071.57	757.77	0.85	
8788.00	90.400	180.880	7490.90	1268.49	-1165.55	755.90	0.62	
8883.00	88.050	180.540	7492.19	1362.14	-1260.53	754.73	2.50	
8979.00	88.360	180.350	7495.19	1456.81	-1356.48	753.98	0.38	
9074.00	88.990	180.790	7497.39	1550.49	-1451.45	753.04	0.81	
9169.00	88.630	179.410	7499.36	1644.30	-1546.43	752.87	1.50	
9263.00	89.530	180.110	7500.87	1737.22	-1640.41	753.26	1.21	
9359.00	90.100	180.880	7501.18	1831.93	-1736.41	752.43	1.00	
9453.00	91.010	180.810	7500.27	1924.56	-1830.39	751.05	0.97	
9548.00	88.590	177.790	7500.60	2018.57	-1925.37	752.21	4.07	
9643.00	88.990	176.740	7502.61	2113.00	-2020.24	756.74	1.18	
9739.00	89.360	177.350	7503.99	2208.47	-2116.10	761.69	0.74	
9834.00	90.170	176.940	7504.38	2302.94	-2210.98	766.42	0.96	
9928.00	88.790	177.060	7505.23	2396.44	-2304.84	771.34	1.47	
10022.00	89.430	176.710	7506.69	2489.95	-2398.69	776.45	0.78	
10117.00	89.760	176.900	7507.37	2584.47	-2493.54	781.74	0.40	
10212.00	89.400	178.130	7508.06	2678.88	-2588.45	785.86	1.35	
10307.00	89.870	178.400	7508.67	2773.13	-2683.40	788.74	0.57	
10403.00	90.700	178.500	7508.19	2868.34	-2779.36	791.33	0.87	
10498.00	89.160	179.200	7508.31	2962.47	-2874.34	793.24	1.78	
10593.00	89.090	179.190	7509.76	3056.51	-2969.32	794.57	0.07	
10688.00	89.660	178.680	7510.79	3150.62	-3064.30	796.34	0.81	
10783.00	88.190	178.530	7512.58	3244.78	-3159.25	798.65	1.56	
10878.00	88.660	178.330	7515.19	3338.97	-3254.18	801.25	0.54	
10973.00	89.460	177.990	7516.75	3433.24	-3349.12	804.30	0.91	
11068.00	90.300	177.400	7516.94	3527.61	-3444.04	808.12	1.08	
11163.00	88.150	178.060	7518.23	3621.96	-3538.95	811.89	2.37	
11257.00	88.930	177.940	7520.62	3715.24	-3632.86	815.17	0.84	
11352.00	89.870	179.990	7521.62	3809.34	-3727.83	816.88	2.37	
11447.00	89.360	181.030	7522.26	3903.05	-3822.83	816.04	1.22	
11542.00	90.570	181.200	7522.32	3996.60	-3917.81	814.19	1.29	
11636.00	90.100	182.600	7521.77	4088.94	-4011.75	811.07	1.57	
11731.00	89.660	182.710	7521.96	4182.01	-4106.65	806.67	0.48	
11827.00	90.300	182.130	7522.00	4276.14	-4202.56	802.62	0.90	
11922.00	90.470	181.030	7521.36	4369.55	-4297.52	800.00	1.17	
12017.00	89.200	179.320	7521.63	4463.36	-4392.52	799.71	2.24	
12112.00	89.870	179.410	7522.40	4557.36	-4487.51	800.76	0.71	
12207.00	88.320	180.200	7523.90	4651.25	-4582.49	801.08	1.83	
12302.00	89.500	180.170	7525.71	4745.04	-4677.47	800.78	1.24	
12397.00	87.820	181.790	7527.93	4838.60	-4772.42	799.15	2.46	
12492.00	88.120	182.460	7531.30	4931.79	-4867.30	795.63	0.77	BAKER DRILLED USING 3RD PARTY MWD-LAST SURVEY (2695'FSL & 327'FEL, SEC.23)
12647.00	88.120	182.460	7536.38	5083.67	-5022.07	788.98	0.00	BAKER DRILLED USING 3RD PARTY MWD-PTB (2540'FSL & 333'FEL, SEC.23)



# Actual Wellpath Report

BYBEE 2 AWP

Page 5 of 6



REFERENCE WELLPATH IDENTIFICATION			
Operator	EXTRACTION OIL & GAS	Slot	SLOT#02 BYBEE 2 (2267'FSL & 1108'FEL, SEC.14)
Area	COLORADO	Well	BYBEE 2
Field	WELD COUNTY (NAD83/TRUE NORTH)	Wellbore	BYBEE 2 AWB
Facility	SEC.14-T02N-R68W		

HOLE & CASING SECTIONS - Ref Wellbore: BYBEE 2 AWB Ref Wellpath: BYBEE 2 AWP									
String/Diameter	Start MD [ft]	End MD [ft]	Interval [ft]	Start TVD [ft]	End TVD [ft]	Start N/S [ft]	Start E/W [ft]	End N/S [ft]	End E/W [ft]
13.5in Open Hole	25.00	1600.00	1575.00	25.00	1599.61	0.00	0.00	-22.61	-0.50
9.625in Casing Surface	25.00	1600.00	1575.00	25.00	1599.61	0.00	0.00	-22.61	-0.50
7.875in Open Hole	1600.00	12647.00	11047.00	1599.61	7536.38	-22.61	-0.50	-5022.07	788.98
5.5in Casing Production	25.00	12647.00	12622.00	25.00	7536.38	0.00	0.00	-5022.07	788.98

TARGETS								
Name	TVD [ft]	North [ft]	East [ft]	Grid East [US ft]	Grid North [US ft]	Latitude	Longitude	Shape
SEC.14-T02N-R62W	0.00	0.00	28.27	3149614.52	1293445.00	40°08'15.580"N	104°57'53.539"W	polygon
SEC.23-T02N-R62W	0.00	0.00	28.27	3149614.52	1293445.00	40°08'15.580"N	104°57'53.539"W	polygon
BYBEE 2 BHL ON PLAT (2500'FSL & 330'FEL, SEC.23)	7475.00	-5061.91	792.84	3150409.58	1288388.02	40°07'25.558"N	104°57'43.697"W	point
BYBEE 2 LANDING POINT ON PLAT (2189'FSL & 330'FEL, SEC.14)	7475.00	-79.08	778.15	3150364.82	1293370.45	40°08'14.798"N	104°57'43.884"W	point
SEC.14/23-T02N-R62W SETBACK (460' 1/2 SECTION LINE (14) & 2500'FSL, SEC.23)	7475.00	0.00	28.27	3149614.52	1293445.00	40°08'15.580"N	104°57'53.539"W	polygon

WELLPATH COMPOSITION - Ref Wellbore: BYBEE 2 AWB Ref Wellpath: BYBEE 2 AWP				
Start MD [ft]	End MD [ft]	Positional Uncertainty Model	Log Name/Comment	Wellbore
25.00	1519.00	ISCWSA MWD, Rev. 3 (Standard)	BAKER HANDS DRILLED USING 3RD PARTY MWD 13.5" HOLE <196-1519>	BYBEE 2 AWB
1519.00	12492.00	ISCWSA MWD, Rev. 3 (Standard)	BAKER HANDS DRILLED USING 3RD PARTY MWD <1657-12492>	BYBEE 2 AWB
12492.00	12647.00	Blind Drilling (std)	Projection to bit	BYBEE 2 AWB



# Actual Wellpath Report

BYBEE 2 AWP

Page 6 of 6



## REFERENCE WELLPATH IDENTIFICATION

Operator	EXTRACTION OIL & GAS	Slot	SLOT#02 BYBEE 2 (2267'FSL & 1108'FEL, SEC.14)
Area	COLORADO	Well	BYBEE 2
Field	WELD COUNTY (NAD83/TRUE NORTH)	Wellbore	BYBEE 2 AWB
Facility	SEC.14-T02N-R68W		

## WELLPATH COMMENTS

MD [ft]	Inclination [°]	Azimuth [°]	TVD [ft]	Comment
196.00	2.480	144.290	195.95	BAKER DRILLED USING 3RD PARTY MWD-FIRST SURVEY
7693.00	70.731	185.104	7410.75	CROSSED SETBACK (2188'FSL & 337'FEL, SEC.14)
8030.00	85.940	179.430	7480.54	LANDING POINT (1781'FSL & 350'FEL, SEC.14)
12492.00	88.120	182.460	7531.30	BAKER DRILLED USING 3RD PARTY MWD-LAST SURVEY (2695'FSL & 327'FEL, SEC.23)
12647.00	88.120	182.460	7536.38	BAKER DRILLED USING 3RD PARTY MWD-PTB (2540'FSL & 333'FEL, SEC.23)