

03/30/2016

VIA ELECTRONIC TRANSMITTAL

Department of Natural Resources  
Oil and Gas Conservation Commission  
The Chancery Building  
Attn: Matt Lepore  
1120 Lincoln St., Suite 801  
Denver, CO 80203

Re: **30 Day Certification Letter – Rule 318A.e**  
Johnson 01N-65W-30 8N & 9C Spacing Unit Adjustments  
SESW Sec 30-T1N-R65W, 6th PM  
Weld County, Colorado

Dear COGCC Director,

Verdad Oil and Gas Corporation (Verdad) hereby certifies to the Director that a thirty (30-day) notice has been given by certified mail to all owners in the proposed wellbore spacing unit consisting of 320-acres comprised of E/2W/2 & W/2E/2 of Sec 30-T1N-R65W. We have not received any objections to such well location or proposed spacing unit, therefore Verdad hereby requests the Director to approve the proposed well pad.

If you should have any questions or concerns regarding this permit, please contact the undersigned at 214-838-2783.

Sincerely,

A handwritten signature in blue ink that reads "L. Arthur Beecherl, IV". The signature is stylized with a large "L" and a prominent "B".

L. Arthur Beecherl, IV  
Vice President of Operations  
Verdad Oil and Gas Corporation

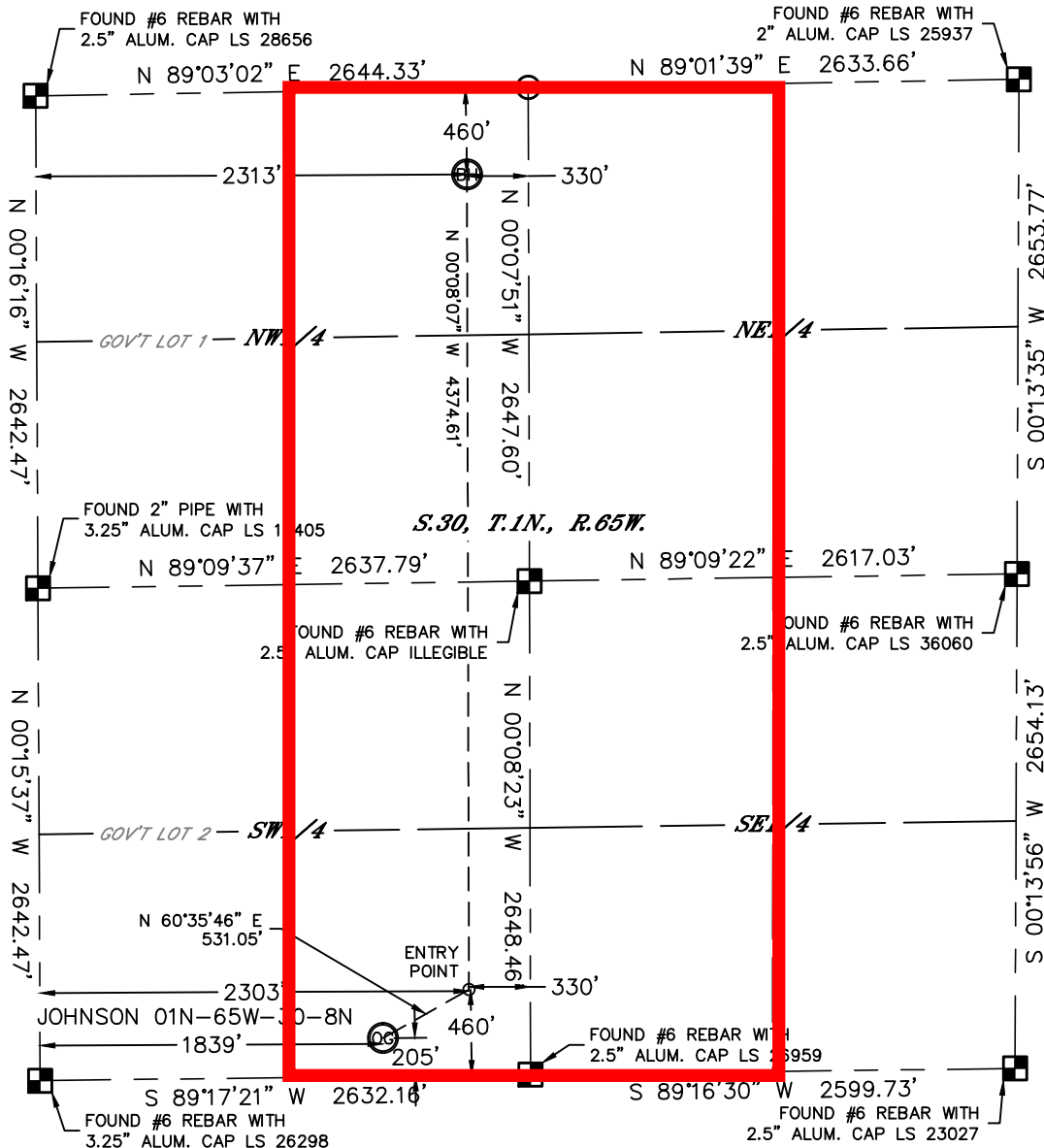


Lat40°, Inc. 1635 Foxtrail Drive, Suite 325 Loveland, CO 970-776-3321

# WELL LOCATION CERTIFICATE

THIS MAP DOES NOT REPRESENT A BOUNDARY SURVEY

SECTION: 30  
TOWNSHIP: 1N  
RANGE: 65W



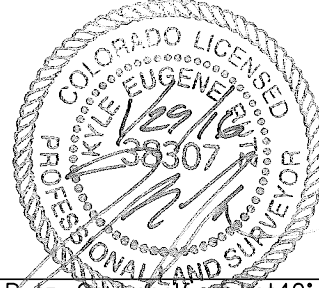
In accordance with a request from Arthur Beecherl with VERDAD OIL & GAS CORPORATION Lat40°, Inc. has determined the surface location of the JOHNSON 01N-65W-30-8N to be 205' from the SOUTH line and 1839' from the WEST line and the bottom hole to be 460' from the NORTH line and 2313' from the WEST line as measured at right angles from the section lines of Section 30, Township 1 North, Range 65 West of the Sixth Principal Meridian, County of Weld, State of Colorado.

I hereby state that this Well Location Certificate was prepared by me, or under my direct supervision, that the fieldwork was completed on 6/17/2014, for and on behalf of VERDAD OIL & GAS COMPANY. That this is not a Land Survey Plat or an Improvement Survey Plat, and that it is not to be relied upon for establishment of fence, building, or other future improvement lines.

**SURFACE LOCATION**  
LAT: 40.01562°N  
LONG: 104.70958°W  
PDOP: 1.4  
ELEV: 4999'  
1/4,1/4: SESW

**BOTTOM HOLE**  
LAT: 40.02833°N  
LONG: 104.70782°W

**ENTRY POINT**  
LAT: 40.01632°N  
LONG: 104.70792°W



Kyle E. Rutz—On behalf of Lat40°, Inc.  
Colorado Licensed Professional  
Land Surveyor No. 38307

DATE: 1/29/2016  
PROJECT#: 2014104

## LEGEND

- = ALIQUOT MONUMENT AS DESCRIBED
- = CALCULATED POSITION

## NOTE:

- 1) Bearings shown are Grid Bearings of the Colorado State Plane Coordinate System, North Zone, North American Datum 1983. The lined dimensions as contained herein are based upon the "U.S. Survey Foot."
- 2) Ground elevations are based on an observed GPS elevation (NAVD 1988 DATUM).
- 3) IMPROVEMENTS: See LOCATION DRAWING for all visible improvements within 500' of disturbed area.
- 4) SURFACE USE: CROPLAND
- 5) INSTRUMENT OPERATOR: WYATT HALL
- 6) NEAREST CULTURAL ITEMS:  
BUILDING: 861' NE  
BUILDING UNIT: 900' NE  
HIGH OCCUPANCY BUILDING UNIT: +5280'  
DESIGNATED OUTSIDE ACTIVITY AREA: +5280'  
PUBLIC ROAD: 206' S (CR 4)  
ABOVEGROUND UTILITY: 245' S  
RAILROAD: ±2720' SE  
PROPERTY LINE: 205' S

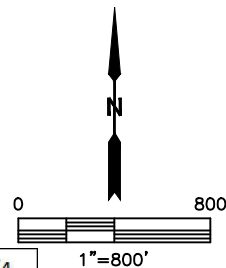
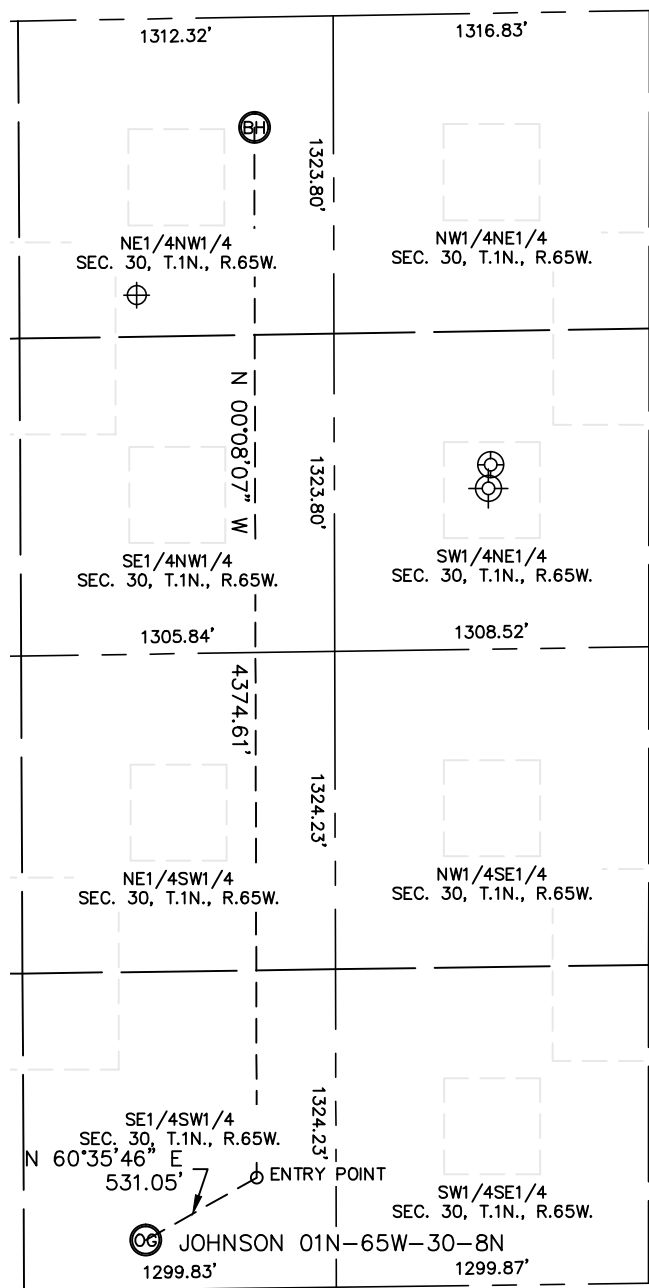


Lat40°, Inc. 1635 Foxtrail Drive, Suite 325 Loveland, CO 970-776-3321

# SITE SKETCH

JOHNSON 01N-65W-30-8N

SECTION: 30  
TOWNSHIP: 1N  
RANGE: 65W



WELL NO.	WELL NAME	SHL FOOTAGE				SHL LAT°	SHL LONG°	PDOP	ELEV (FT.)	1/4/1/4
2	GILMORE 1-30	1150	FNL	1820	FWL	40.02644	-104.70961	N/A	4991	NENW
3	MARGUERITE BLEHLA-1	1881	FNL	1971	FEL	40.02445	-104.70435	2.0	4990	SWNE
4	M BLEHLA 1	1980	FNL	1980	FEL	40.02418	-104.70450	N/A	4984	SWNE

NOTE: THE ABANDONED WELL DATA SHOWN IN RED ABOVE WAS OBTAINED FROM COGCC SCOUT CARDS.

DATE: 1/29/2016  
PROJECT#: 2014104