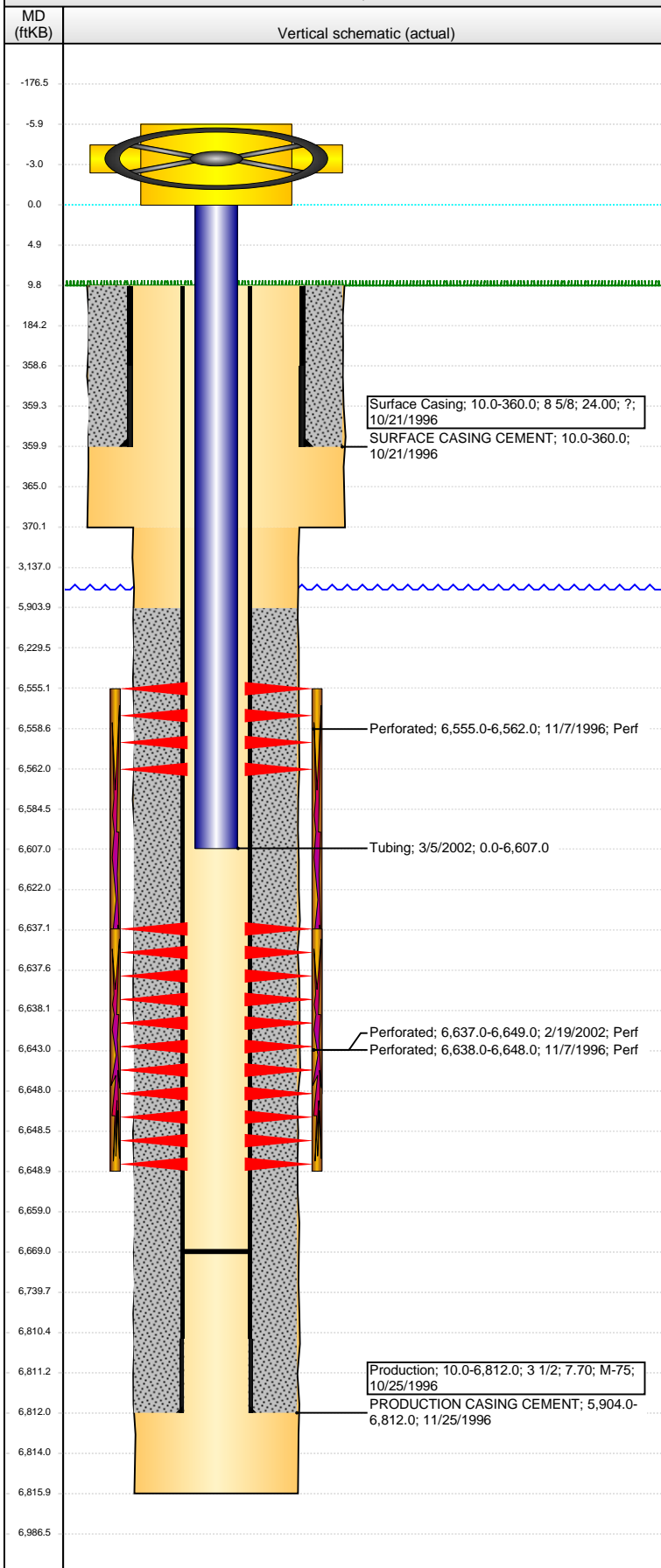


**Well Name: ROTHE STATE B36-15**

DEVIATED - ORIGINAL HOLE, 4/22/2016 9:54:10 AM



## Well Header

API 05-123-19216	Business Unit DJ BASIN	District 15	Well Config DEVIATED
Original KB Elevation (ft) 4,597	KB - GL / MSL (ftKB) 10.00	Spud Date 10/21/1996	P & A Date

Comment  
SUNDRY - LOC CHANGE 10/23/96 (NOT SHOWN ON COMPLETION REPORT)

Directions To Well

## Congressional Location

Quarter 1	Quarter 2	Quarter 3	Quarter 4	Section	Township	Twnshp N...	Range	Rng E/W Dir
		SW	SE	36	5	N	64	W

## Bottom Hole Location

North-South Distance (ft)	From N or S Line	East-West Distance (ft)	From E or W Line

## Plug Back Total Depths

Date	Depth (ftKB)	Method	Com
11/7/1996	6,740.0	CASED HOLE LOG	DEPTH LOGGER ON CBL
12/23/1996	6,790.0	TAG	C/O LND TBG
3/5/2002	6,669.0	TAG	C/O LND TBG

## Wellbore Sections

Section Des	Size (in)	Act Top, MD (ftKB)	Act Btm, MD (ftKB)
SURFACE	12 1/4	10.0	370.0
PRODUCTION	7 7/8	370.0	6,816.0

## Zone Statuses

Zone Name	Status Date	Status	Fluid Type	Job	Prod Method
CODELL	11/23/1996	PR		DRILLING/CO...	
CODELL	3/11/2011	PR		RE-FRAC, 2/14...	
NIOBRARA	11/23/1996	PR		DRILLING/CO...	

## Casing Strings

### Surface Casing, 360.0ftKB

Casing Description	Run Date	OD (in)	Wt/Len (l...)	Grade	Top, MD (ft...)	MD (ftKB)
Surface Casing	10/21/1996	8 5/8	24.00	?	10.0	360.0

### Production, 6,812.0ftKB

Casing Description	Run Date	OD (in)	Wt/Len (l...)	Grade	Top, MD (ft...)	MD (ftKB)
Production	10/25/1996	3 1/2	7.70	M-75	10.0	6,812.0

## Cement

Description	Top Depth (ftKB)	Bottom Depth (ftKB)
SURFACE CASING CEMENT	10.0	360.0
Description	Top Depth (ftKB)	Bottom Depth (ftKB)
PRODUCTION CASING CEMENT	5,904.0	6,812.0

## Tubing Strings

Tubing Description	Run Date	String...	ID (in)	Wt (lb/ft)	Grade	Len (ft)	Set De...
Tubing	3/5/2002	2 1/16	1.751	3.25	J-55	6,607.00	

## Tubing Components

Item Des	OD (in)	Wt (lb/ft)	Grade	Jts	Len (ft)	Btm (ftKB)	Btm (TVD) (ftKB)
Tubing	2 1/16	3.25	J-55	202	6,607.00	6,607.0	

## Perforation Data

Zone	Bnch/St g	Entered Shot Total	Top (ftKB)	Btm (ftKB)	Date
NIOBRARA, ORIGINAL HOLE		6	6,555.00	6,562.00	11/7/1996
CODELL, ORIGINAL HOLE		48	6,637.00	6,649.00	2/19/2002
CODELL, ORIGINAL HOLE		8	6,638.00	6,648.00	11/7/1996

## Stimulations & Treatments

Date	Zone	Primary Job Type
11/8/1996	NIOBRARA-CODELL, ORIGINAL HOLE	DRILLING/COMPLETION - ORIGINAL
Technical Result	Tech Result Details	Tech Result Note

Comment  
LIMITED ENTRY

Date	Zone	Primary Job Type
2/26/2002	CODELL, ORIGINAL HOLE	RE-FRAC
Technical Result	Tech Result Details	Tech Result Note

Comment

**Well Name: ROTHE STATE B36-15**

DEVIATED - ORIGINAL HOLE, 4/22/2016 9:54:13 AM

## Other In Hole

Run Date	Des	OD (in)	Top (ftKB)	Btm (ftKB)

## Logs

Date	Type	Top, MD (ftKB)	Btm, MD (ftKB)
10/26/1996	COMPENSATED DENSITY	360.0	6,809.0
10/26/1996	INDUCTION	360.0	6,810.0
11/7/1996	CEMENT BOND	5,700.0	6,740.0

