



MOJACK M-28HN

MD
2":100'

Directional Services

Company: Bayswater Exploration & Production, LLC

Well Name: Mojack M-28HN

API: 05-123-39833-00

Rig Id: Frontier 8

State: CO

County/Parish: Weld

Country: United States

Survey Company: Ensign Directional Services

Job number:

DIR. DRILLER DAY Kabel Skelton

DIR. DRILLER NIGHT Jaime Sheets

LWD/MWD DAYS Matt Brokaw

LWD/MWD NIGHTS Donovan Olson

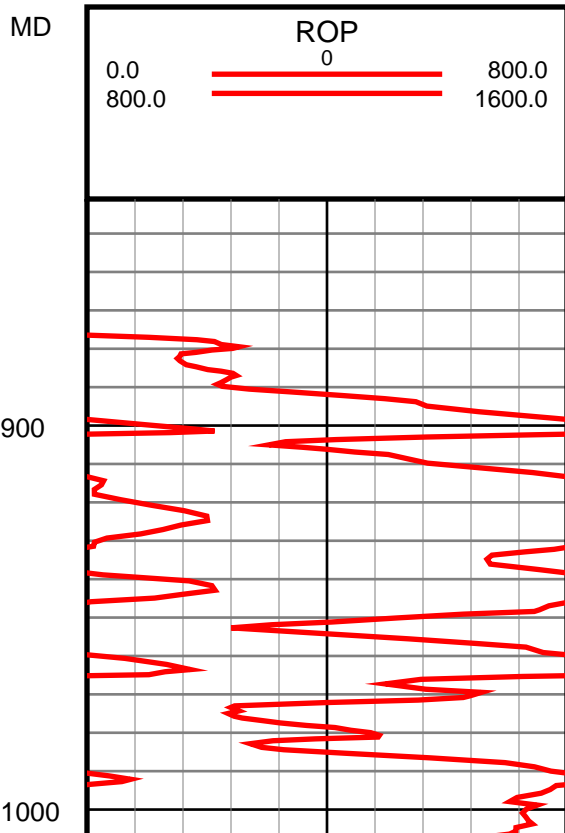
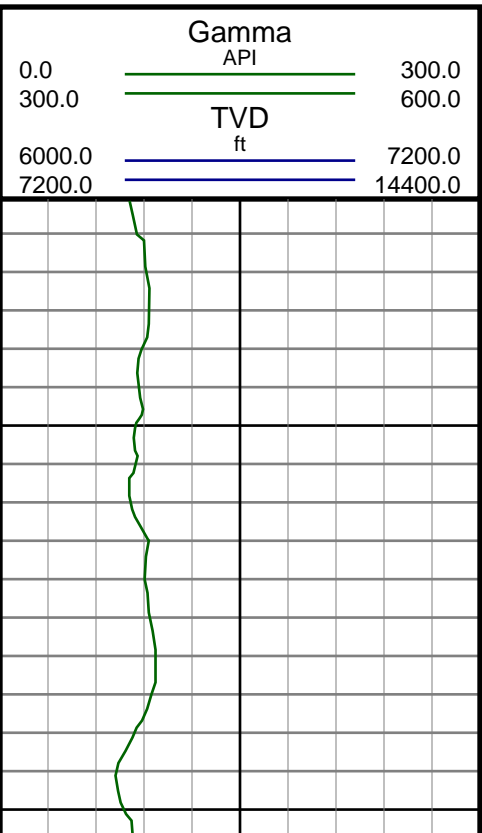
Log measurements: Gamma
Depth measured from: Rig Floor
Maximum temperature:

Depth Date
Start: 12845 ft 12/17/2014
End: 16917 ft 12/20/2014

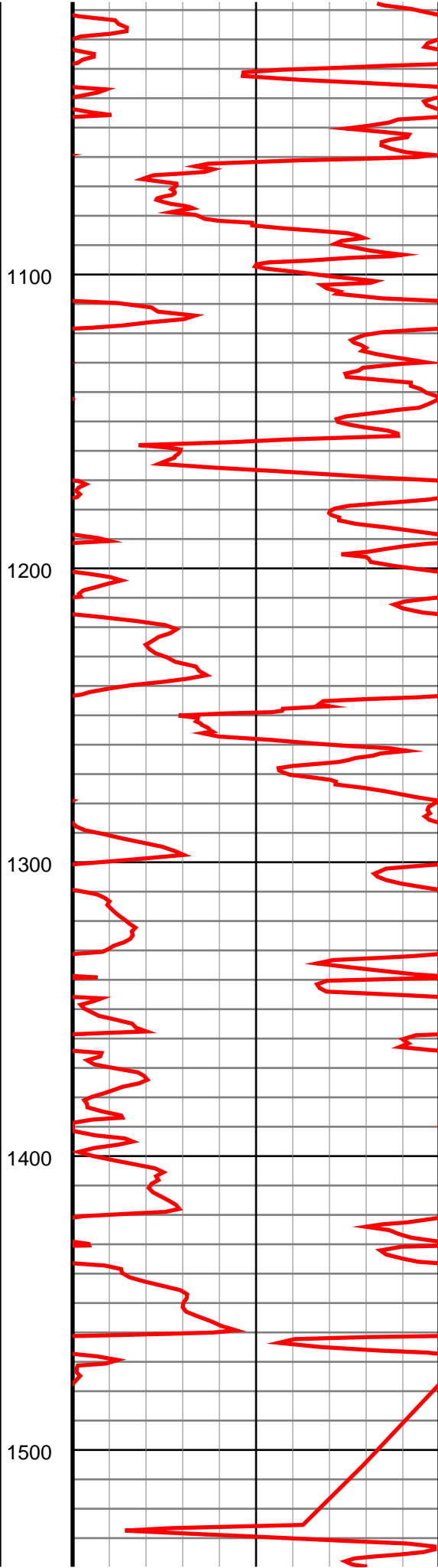
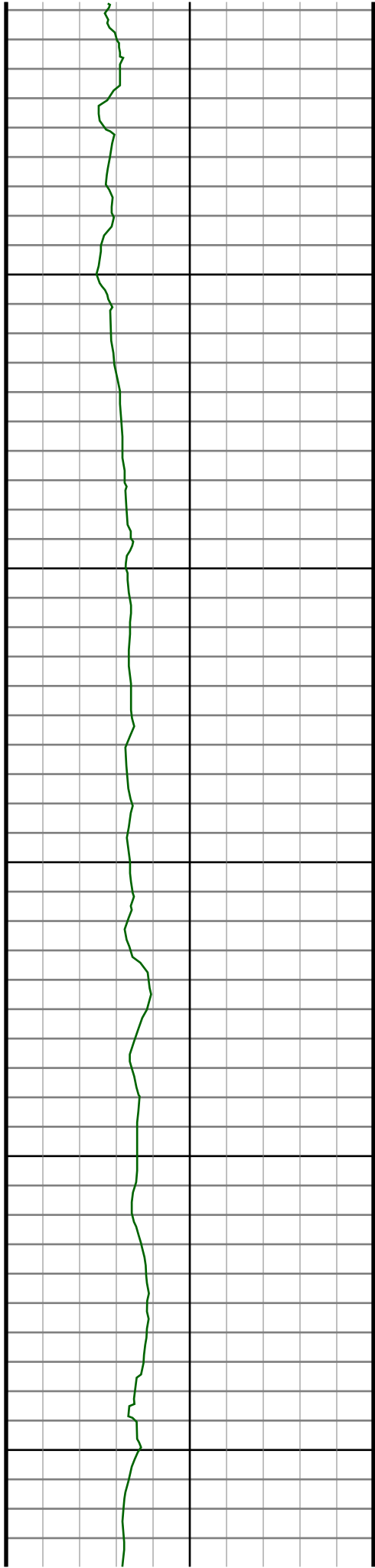
Casing	Depth	Size	Mud Type:	Elevations
Surface:	788	9.63	Density:	KB: 4922.5
Intermediate:	7449	7	Viscosity:	GL: 4900
			Rm:	DF: 4922.5
			Rmf:	
			Rmc:	

Run	Bit Size	Offsets		Start		End		Dates	
		Gamma	Survey	Start	End	Start	End	Start	End
1	8.75	51.19	46.19	798	6544	11/17/2014	11/18/2014		
2	8.75	51.53	46.53	6544	7462	11/18/2014	11/20/2014		
3	6.125	57.88	52.88	7462	12845	12/12/2014	12/16/2014		
4	6.125	57.50	52.50	12845	16917	12/17/2014	12/20/2014		
5									
6									
7									
8									
9									
10									

Ensign Directional Services uses its best efforts to provide its customers with accurate information and interpretations in conjunction with services performed but will not be held liable or responsible for the accuracy of such information or interpretation.



#10 MD(922.00) Inc(2.8) Azm(86.0) TVD(921.93)
VS(-3.00) NS(3.28) EW(6.28) TEMP(0.0)



#11 MD(1015.00) Inc(4.7) Azm(78.4) TVD(1014.73)
VS(-3.66) NS(4.20) EW(12.28) TEMP(0.0)

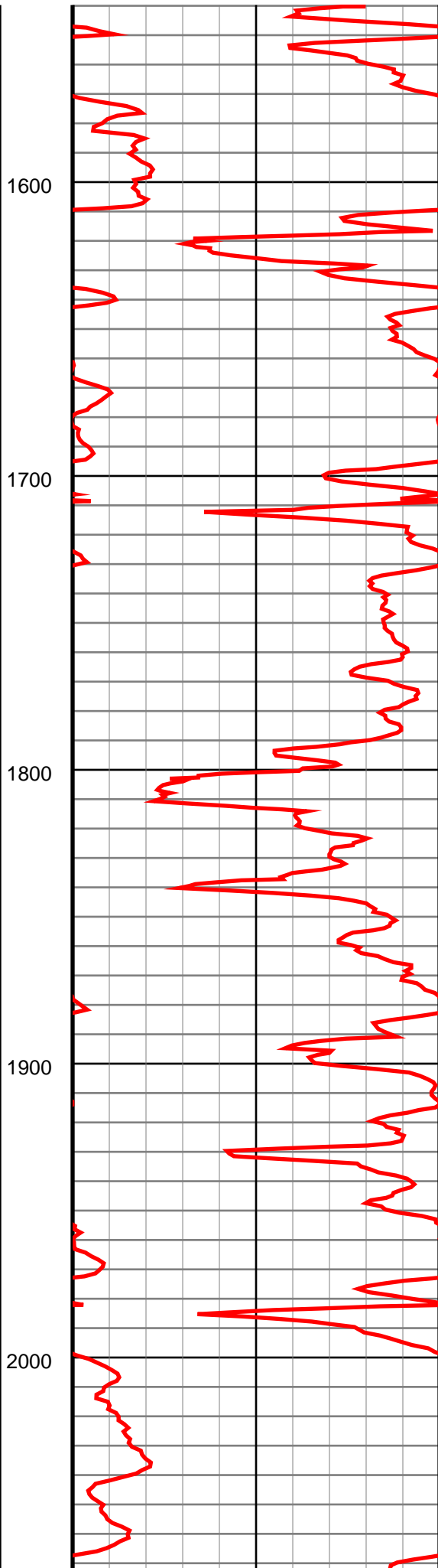
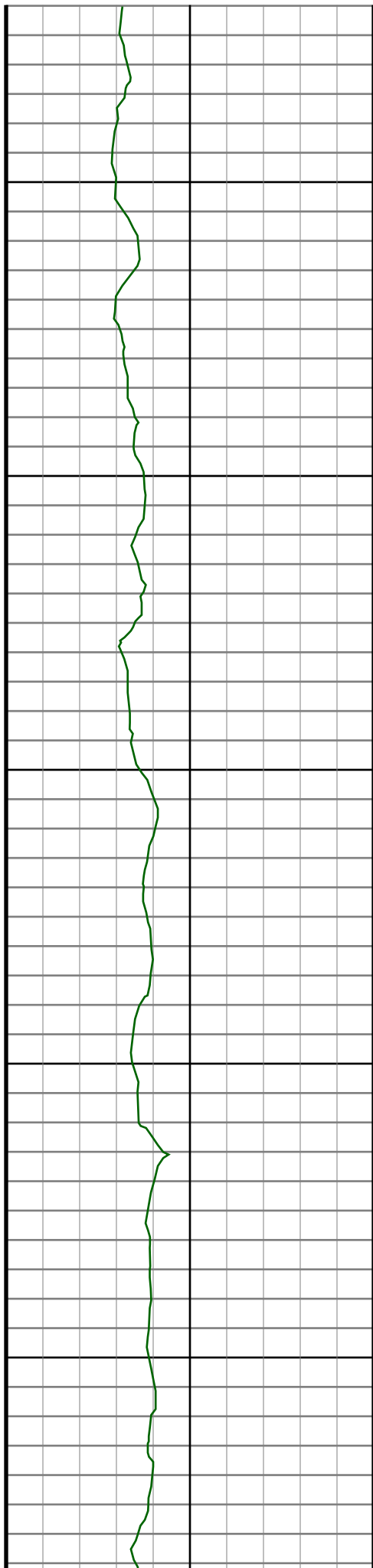
#12 MD(1106.00) Inc(7.4) Azm(73.3) TVD(1105.22)
VS(-5.69) NS(6.64) EW(21.54) TEMP(0.0)

#13 MD(1199.00) Inc(8.8) Azm(74.6) TVD(1197.29)
VS(-8.74) NS(10.25) EW(34.14) TEMP(0.0)

#14 MD(1291.00) Inc(9.9) Azm(70.7) TVD(1288.06)
VS(-12.60) NS(14.73) EW(48.39) TEMP(0.0)

#15 MD(1383.00) Inc(9.9) Azm(71.4) TVD(1378.69)
VS(-17.07) NS(19.87) EW(63.35) TEMP(0.0)

#16 MD(1475.00) Inc(10.2) Azm(69.5) TVD(1469.28)
VS(-21.78) NS(25.24) EW(78.47) TEMP(0.0)



#17 MD(1567.00) Inc(10.1) Azm(69.0) TVD(1559.84)
VS(-26.85) NS(30.98) EW(93.63) TEMP(0.0)

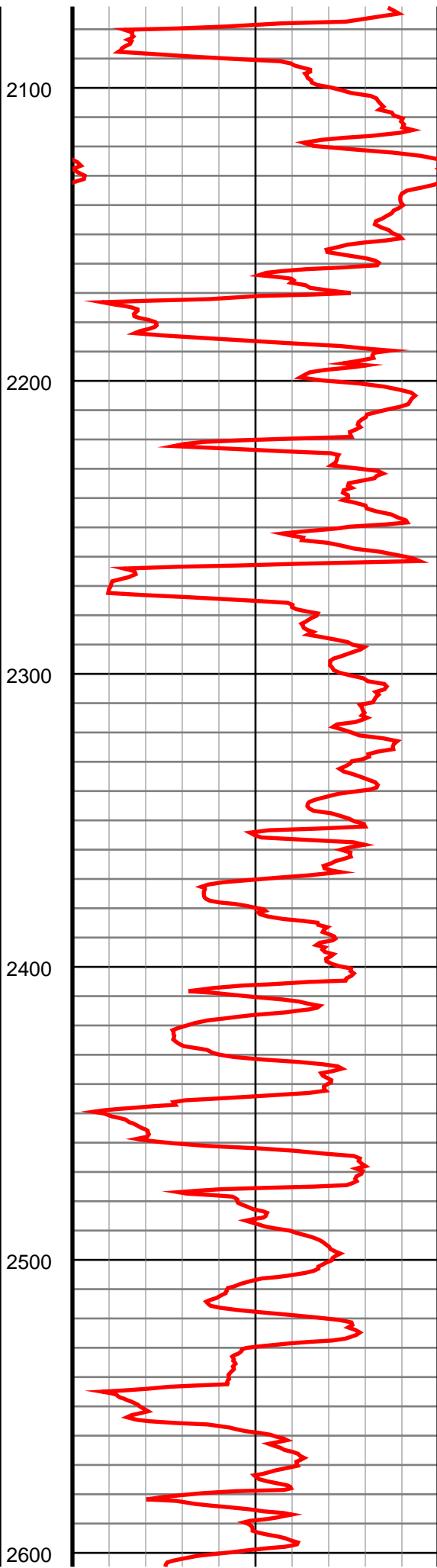
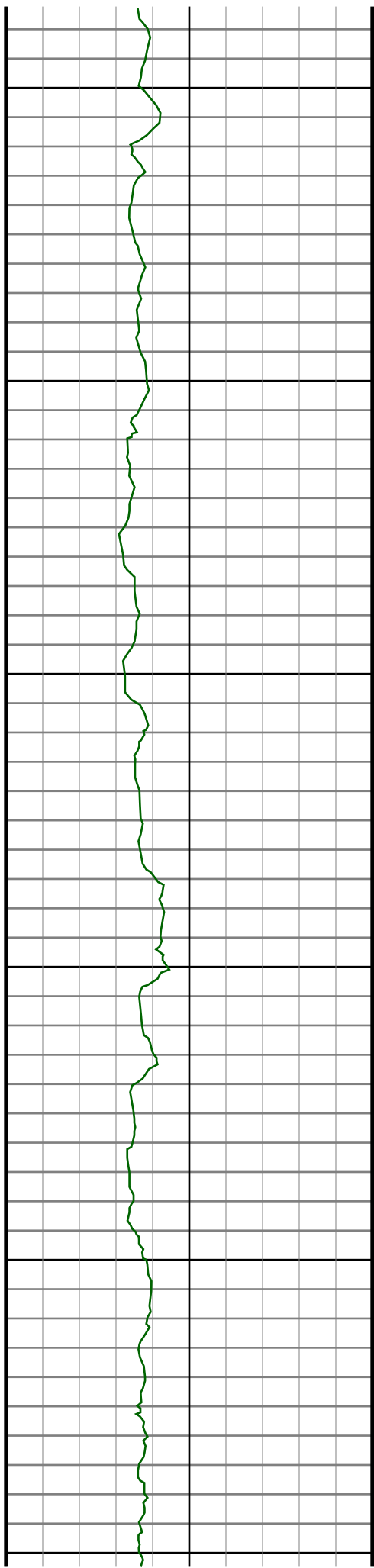
#18 MD(1659.00) Inc(10.6) Azm(70.9) TVD(1650.35)
VS(-31.83) NS(36.64) EW(109.16) TEMP(0.0)

#19 MD(1751.00) Inc(10.7) Azm(68.6) TVD(1740.76)
VS(-37.01) NS(42.53) EW(125.11) TEMP(0.0)

#20 MD(1844.00) Inc(10.5) Azm(73.7) TVD(1832.18)
VS(-41.83) NS(48.06) EW(141.28) TEMP(0.0)

#21 MD(1936.00) Inc(9.6) Azm(71.9) TVD(1922.76)
VS(-45.89) NS(52.79) EW(156.62) TEMP(0.0)

#22 MD(2028.00) Inc(8.4) Azm(64.0) TVD(2013.63)
VS(-50.63) NS(58.12) EW(169.95) TEMP(0.0)



#23 MD(2120.00) Inc(8.2) Azm(64.0) TVD(2104.67)
VS(-55.92) NS(63.95) EW(181.89) TEMP(0.0)

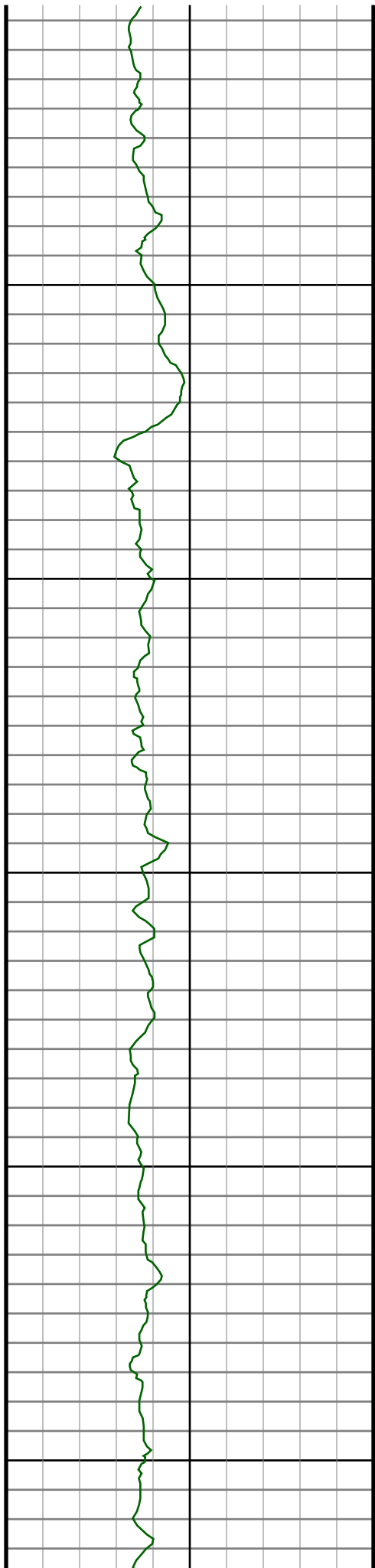
#24 MD(2212.00) Inc(8.7) Azm(74.9) TVD(2195.68)
VS(-60.05) NS(68.64) EW(194.50) TEMP(0.0)

#25 MD(2305.00) Inc(9.4) Azm(78.3) TVD(2287.52)
VS(-62.80) NS(72.01) EW(208.73) TEMP(0.0)

#26 MD(2400.00) Inc(7.8) Azm(72.5) TVD(2381.45)
VS(-65.70) NS(75.52) EW(222.48) TEMP(0.0)

#27 MD(2495.00) Inc(9.2) Azm(75.5) TVD(2475.40)
VS(-68.95) NS(79.36) EW(235.98) TEMP(0.0)

#28 MD(2590.00) Inc(9.7) Azm(76.9) TVD(2569.11)
VS(-72.00) NS(83.08) EW(251.13) TEMP(0.0)



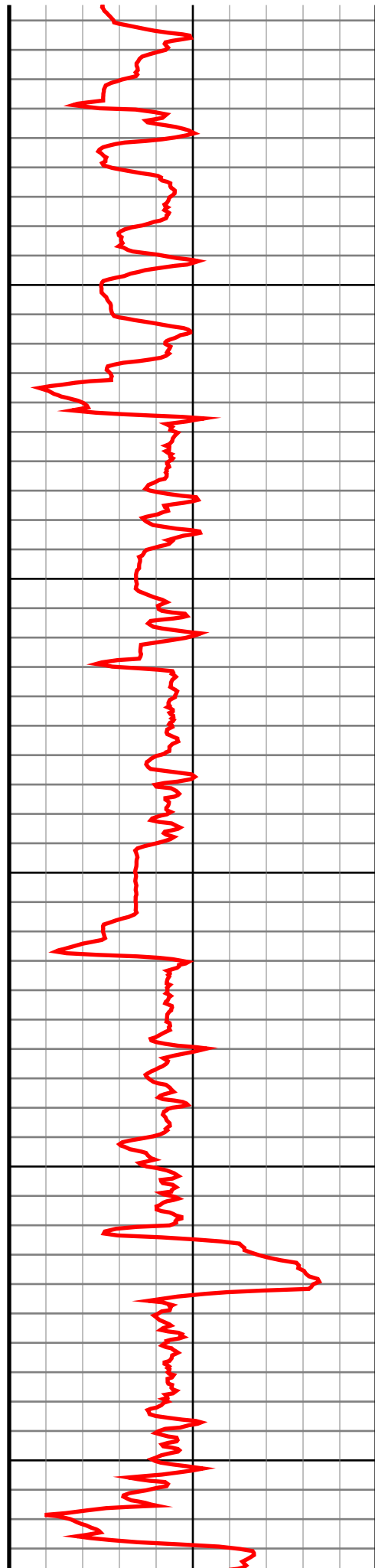
2700

2800

2900

3000

3100



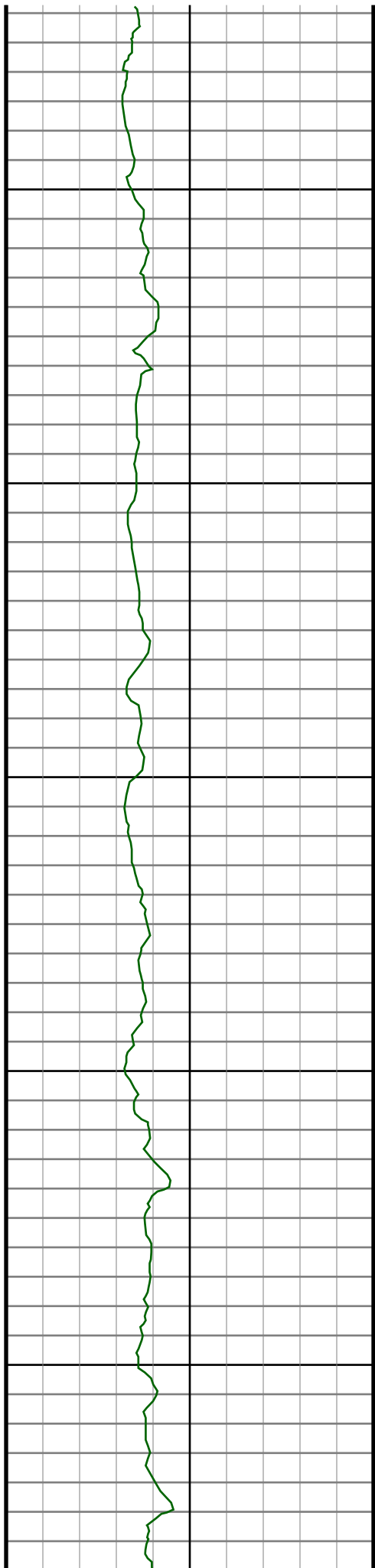
#29 MD(2686.00) Inc(8.8) Azm(75.8) TVD(2663.86)
VS(-74.97) NS(86.71) EW(266.12) TEMP(0.0)

#30 MD(2781.00) Inc(9.8) Azm(76.2) TVD(2757.61)
VS(-78.03) NS(90.42) EW(281.02) TEMP(0.0)

#31 MD(2876.00) Inc(9.7) Azm(76.3) TVD(2851.24)
VS(-81.16) NS(94.25) EW(296.65) TEMP(0.0)

#32 MD(2971.00) Inc(9.5) Azm(75.6) TVD(2944.91)
VS(-84.33) NS(98.09) EW(312.02) TEMP(0.0)

#33 MD(3066.00) Inc(8.9) Azm(74.4) TVD(3038.69)
VS(-87.61) NS(102.02) EW(326.69) TEMP(0.0)



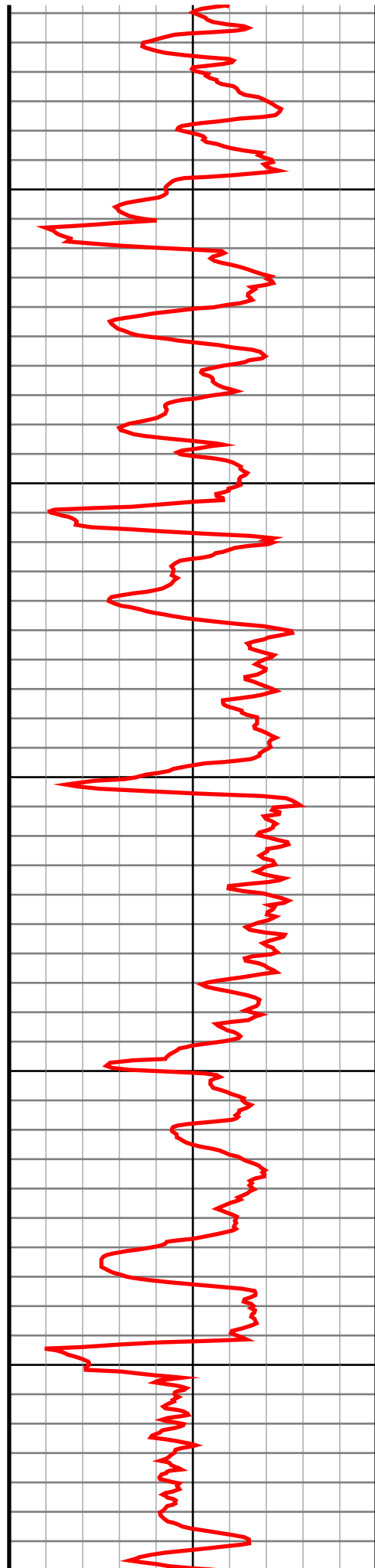
3200

3300

3400

3500

3600



#34 MD(3162.00) Inc(10.4) Azm(75.6) TVD(3133.33)
VS(-91.08) NS(106.17) EW(342.23) TEMP(0.0)

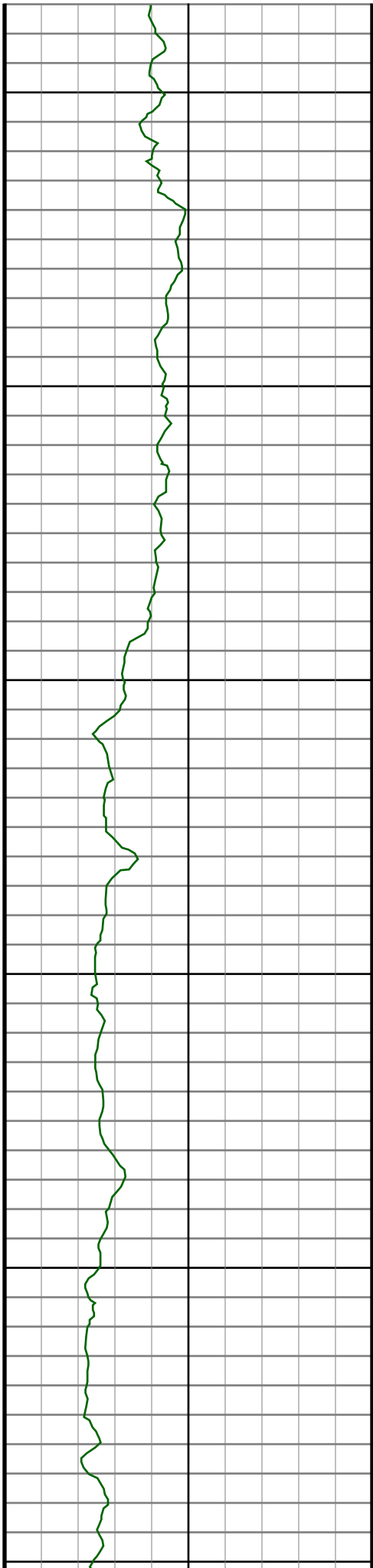
#35 MD(3257.00) Inc(10.6) Azm(67.9) TVD(3226.74)
VS(-95.78) NS(111.59) EW(358.64) TEMP(0.0)

#36 MD(3352.00) Inc(9.4) Azm(76.0) TVD(3320.30)
VS(-100.25) NS(116.75) EW(374.26) TEMP(0.0)

#37 MD(3447.00) Inc(9.1) Azm(74.1) TVD(3414.07)
VS(-103.54) NS(120.69) EW(389.01) TEMP(0.0)

#38 MD(3543.00) Inc(8.4) Azm(74.9) TVD(3508.95)
VS(-106.82) NS(124.59) EW(403.08) TEMP(0.0)

#39 MD(3638.00) Inc(8.2) Azm(66.0) TVD(3602.96)
VS(-110.82) NS(129.16) EW(415.97) TEMP(0.0)



3700

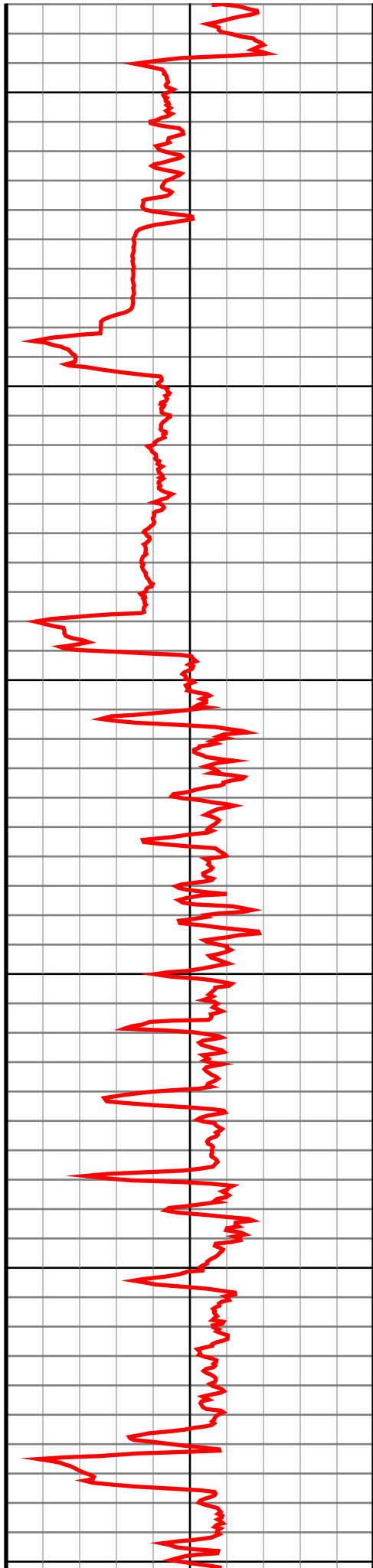
3800

3900

4000

4100

4200



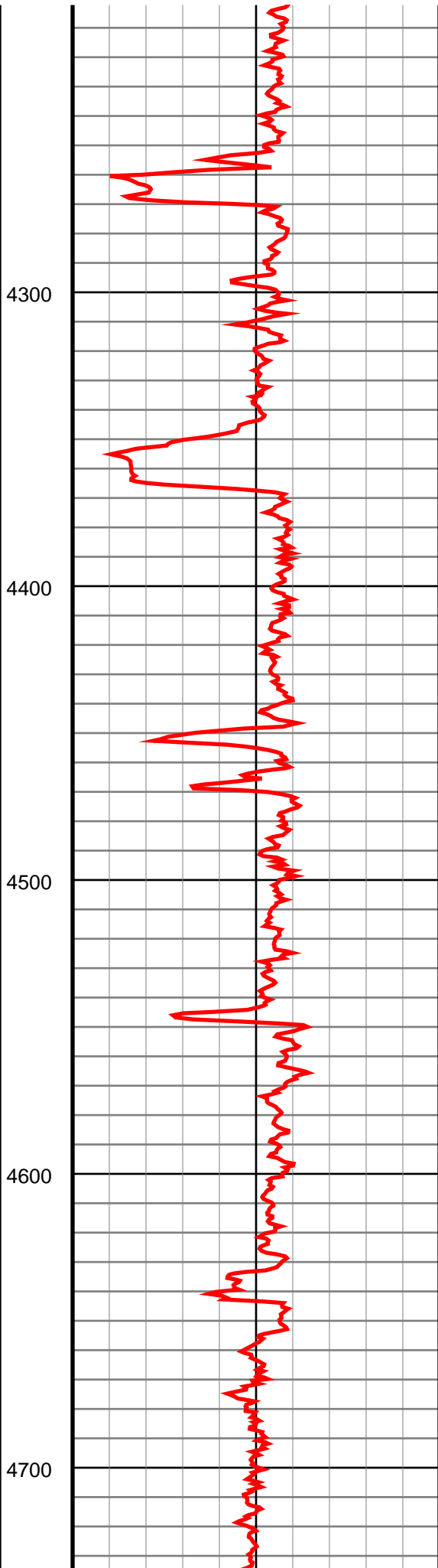
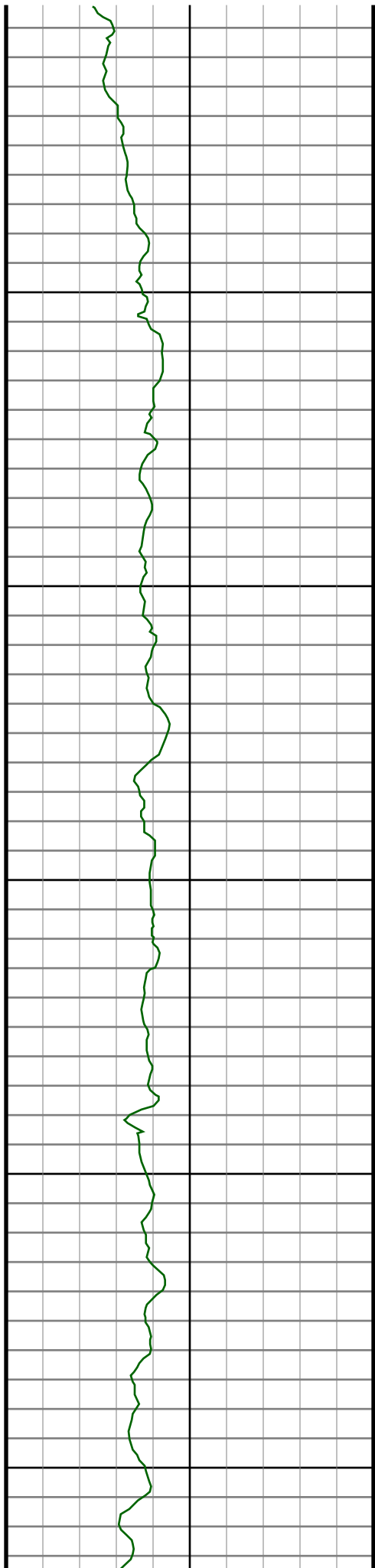
#40 MD(3733.00) Inc(7.4) Azm(64.7) TVD(3697.08)
VS(-115.67) NS(134.53) EW(427.69) TEMP(0.0)

#41 MD(3828.00) Inc(8.3) Azm(61.0) TVD(3791.19)
VS(-121.10) NS(140.47) EW(439.22) TEMP(0.0)

#42 MD(3923.00) Inc(9.1) Azm(66.1) TVD(3885.10)
VS(-126.90) NS(146.84) EW(452.09) TEMP(0.0)

#43 MD(4019.00) Inc(9.4) Azm(66.3) TVD(3979.85)
VS(-132.50) NS(153.06) EW(466.21) TEMP(0.0)

#44 MD(4114.00) Inc(10.0) Azm(67.2) TVD(4073.49)
VS(-138.16) NS(159.38) EW(480.91) TEMP(0.0)



#45 MD(4209.00) Inc(9.3) Azm(63.0) TVD(4167.14)
VS(-144.21) NS(166.06) EW(495.36) TEMP(0.0)

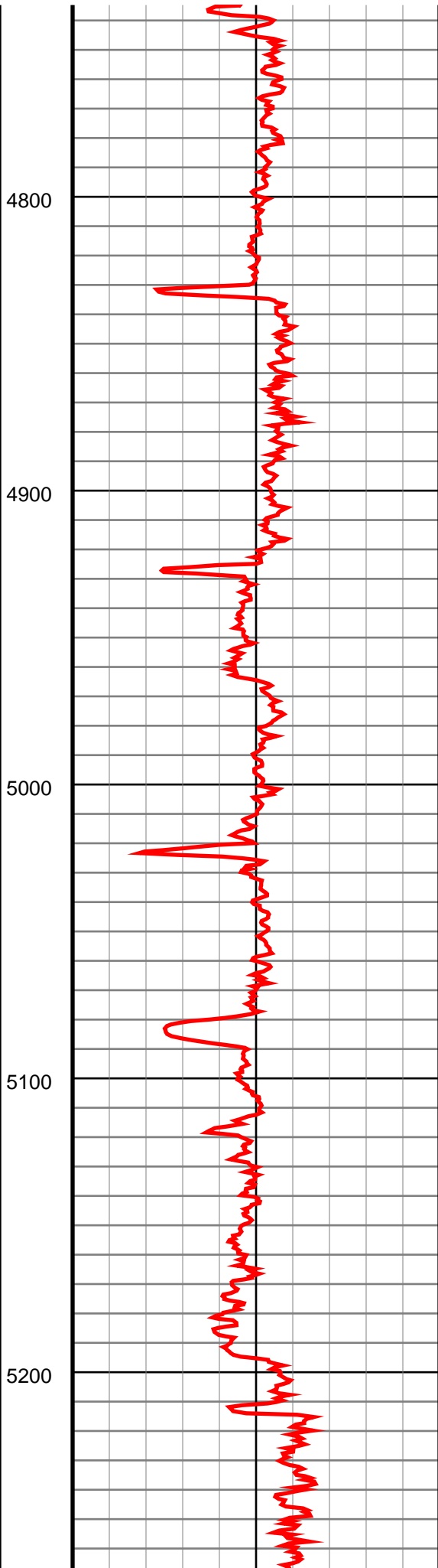
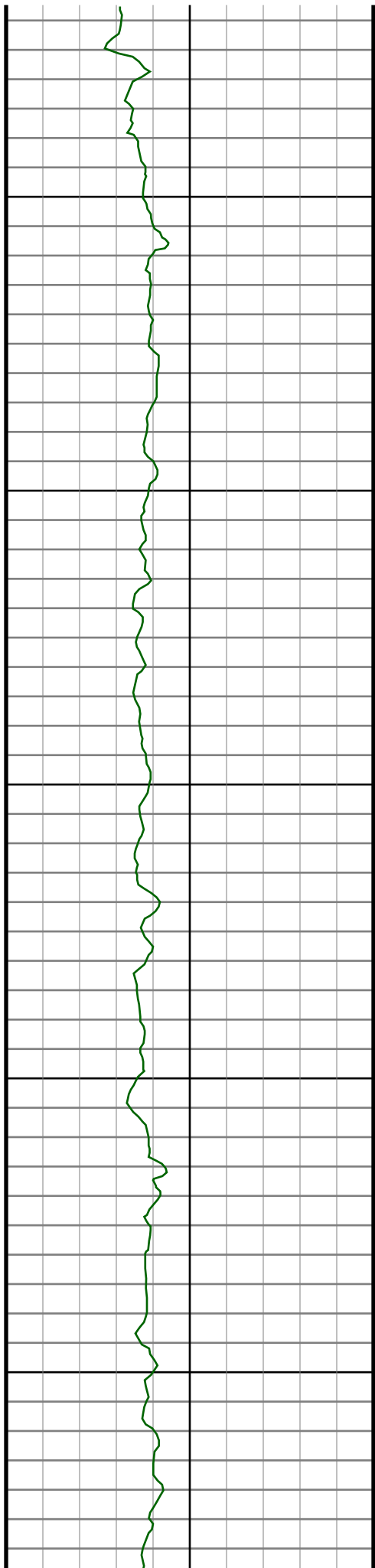
#46 MD(4304.00) Inc(8.2) Azm(64.4) TVD(4261.04)
VS(-150.04) NS(172.47) EW(508.31) TEMP(0.0)

#47 MD(4400.00) Inc(6.7) Azm(68.4) TVD(4356.23)
VS(-154.56) NS(177.49) EW(519.69) TEMP(0.0)

#48 MD(4495.00) Inc(6.2) Azm(70.0) TVD(4450.62)
VS(-157.92) NS(181.29) EW(529.66) TEMP(0.0)

#49 MD(4590.00) Inc(5.6) Azm(70.5) TVD(4545.12)
VS(-160.81) NS(184.59) EW(538.85) TEMP(0.0)

#50 MD(4686.00) Inc(4.9) Azm(65.4) TVD(4640.72)
VS(-163.72) NS(187.86) EW(547.00) TEMP(0.0)



#51 MD(4781.00) Inc(4.6) Azm(69.3) TVD(4735.39)
VS(-166.44) NS(190.89) EW(554.25) TEMP(0.0)

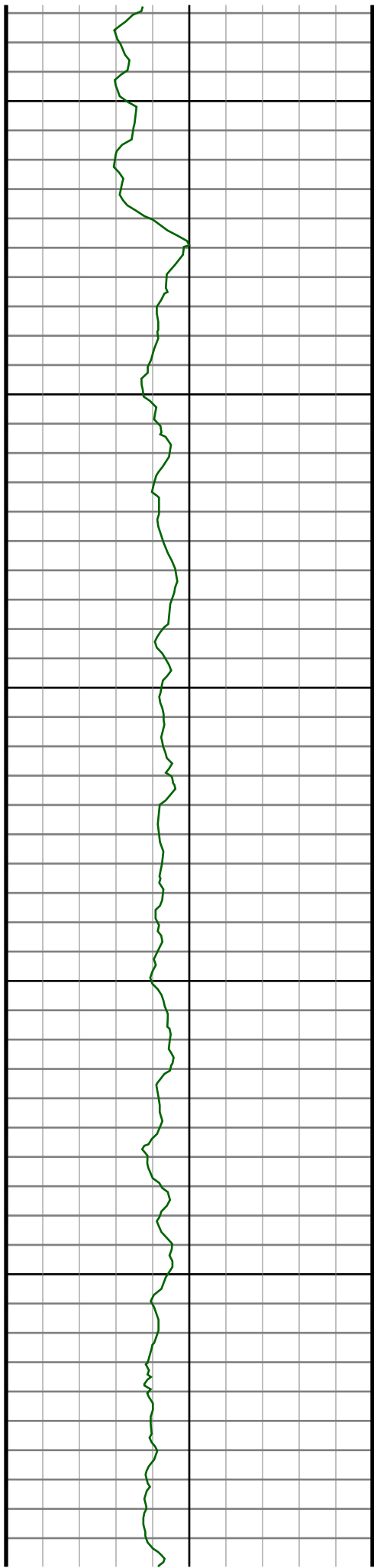
#52 MD(4876.00) Inc(3.7) Azm(71.4) TVD(4830.14)
VS(-168.48) NS(193.22) EW(560.72) TEMP(0.0)

#53 MD(4971.00) Inc(3.1) Azm(72.8) TVD(4924.97)
VS(-169.98) NS(194.95) EW(566.08) TEMP(0.0)

#54 MD(5066.00) Inc(2.8) Azm(83.5) TVD(5019.85)
VS(-170.79) NS(195.98) EW(570.84) TEMP(0.0)

#55 MD(5161.00) Inc(1.8) Azm(81.3) TVD(5114.77)
VS(-171.11) NS(196.47) EW(574.62) TEMP(0.0)

#56 MD(5256.00) Inc(1.3) Azm(84.6) TVD(5209.74)
VS(-171.33) NS(196.79) EW(577.16) TEMP(0.0)



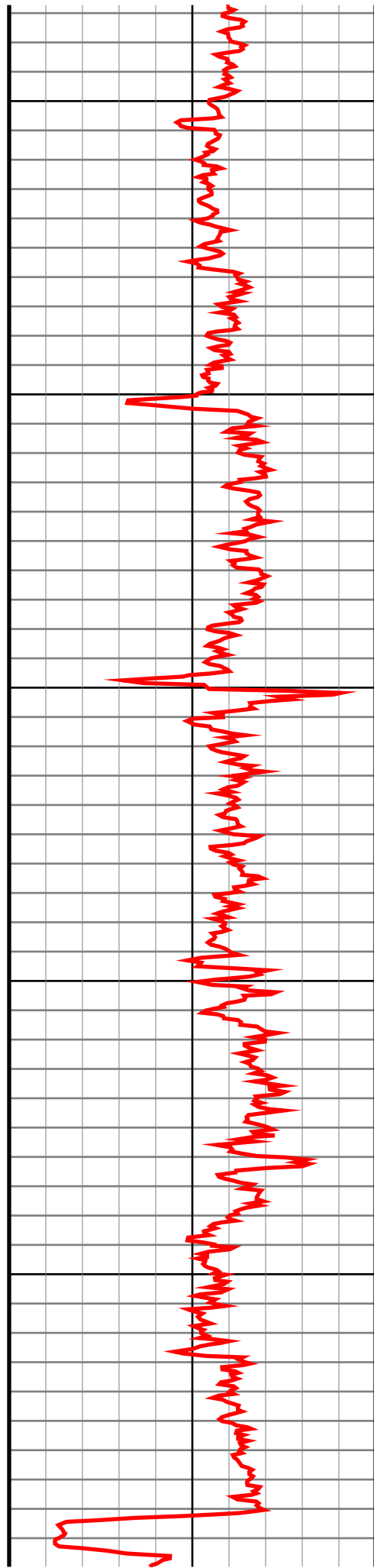
5300

5400

5500

5600

5700



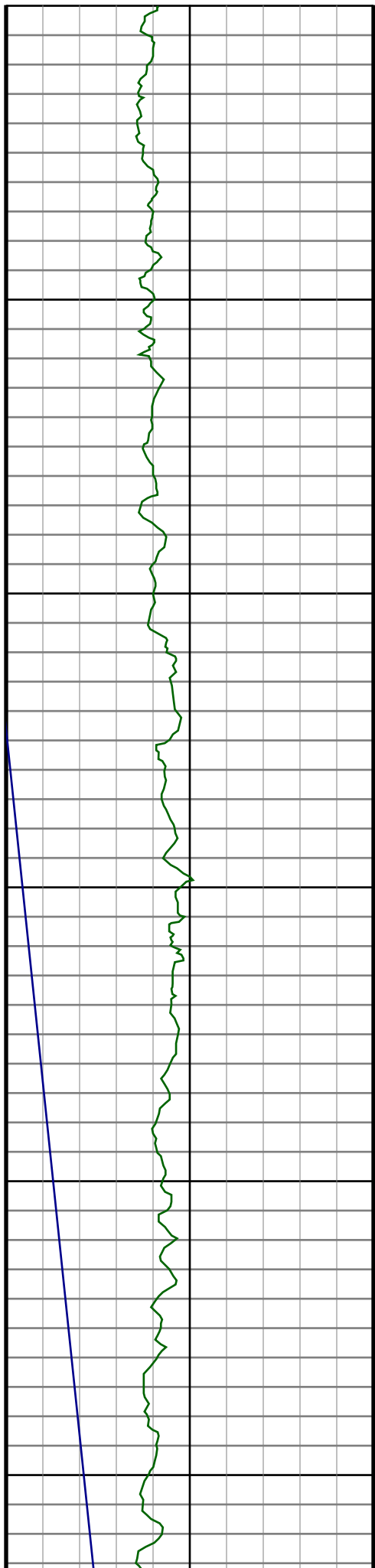
#57 MD(5352.00) Inc(0.7) Azm(102.0) TVD(5305.72)
VS(-171.24) NS(196.77) EW(578.82) TEMP(0.0)

#58 MD(5447.00) Inc(0.4) Azm(108.7) TVD(5400.72)
VS(-170.97) NS(196.55) EW(579.70) TEMP(0.0)

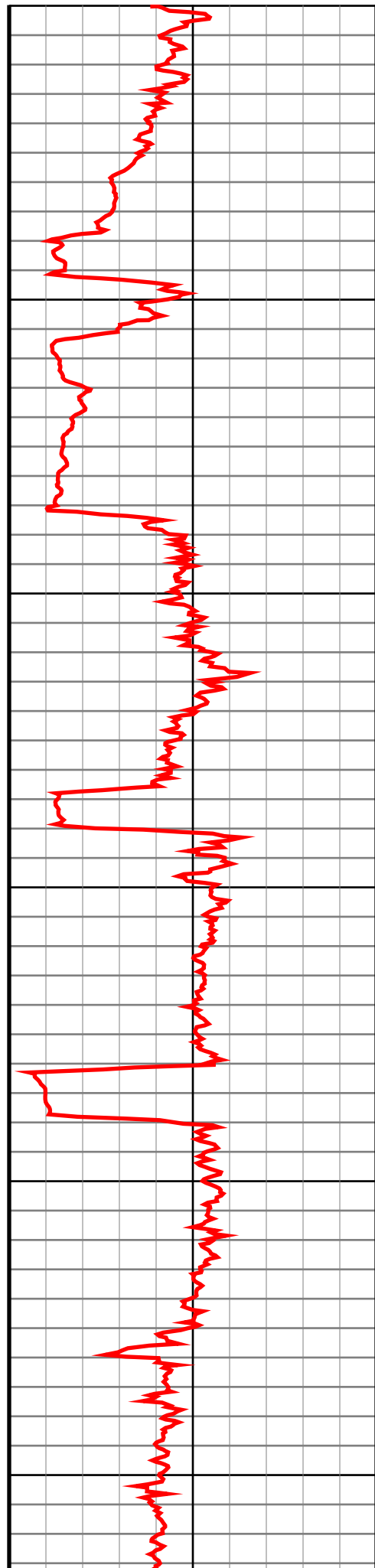
#59 MD(5542.00) Inc(0.8) Azm(175.3) TVD(5495.71)
VS(-170.19) NS(195.78) EW(580.07) TEMP(0.0)

#60 MD(5637.00) Inc(1.1) Azm(220.0) TVD(5590.70)
VS(-168.85) NS(194.42) EW(579.54) TEMP(0.0)

#61 MD(5733.00) Inc(1.2) Azm(192.0) TVD(5686.68)
VS(-167.20) NS(192.73) EW(578.74) TEMP(0.0)



5800
5900
6000
6100
6200
6300



#62 MD(5828.00) Inc(1.2) Azm(137.2) TVD(5781.66)
VS(-165.48) NS(191.03) EW(579.21) TEMP(0.0)

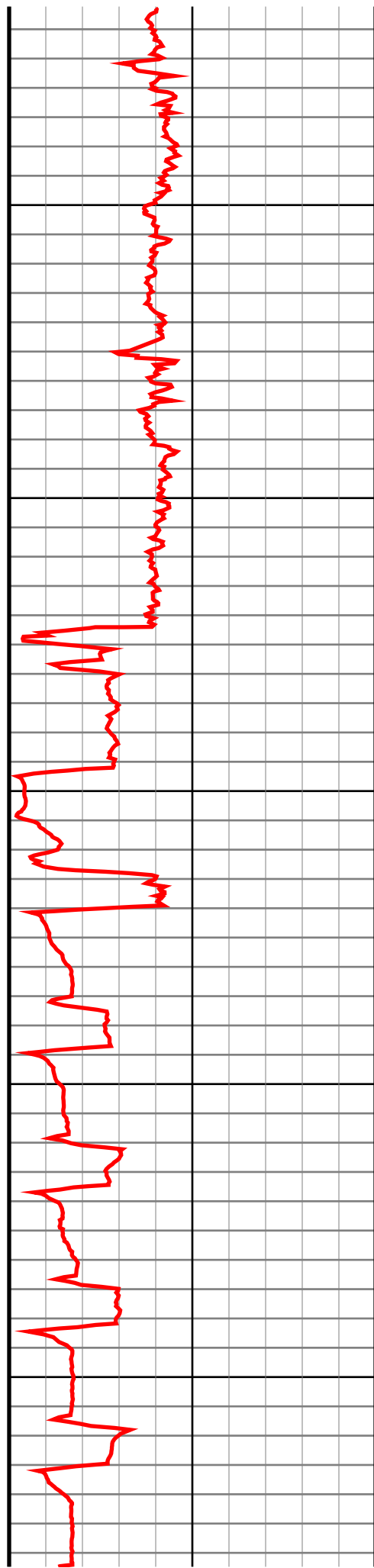
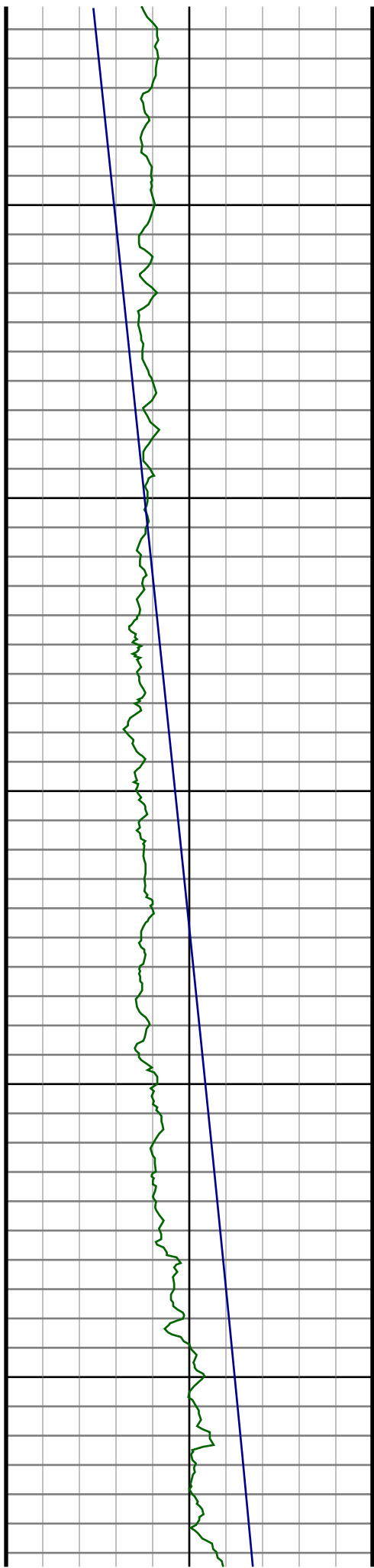
#63 MD(5923.00) Inc(0.6) Azm(149.1) TVD(5876.65)
VS(-164.28) NS(189.87) EW(580.14) TEMP(0.0)

#64 MD(6018.00) Inc(1.1) Azm(162.5) TVD(5971.64)
VS(-162.96) NS(188.57) EW(580.67) TEMP(0.0)

#65 MD(6114.00) Inc(1.6) Azm(158.6) TVD(6067.61)
VS(-160.80) NS(186.45) EW(581.44) TEMP(0.0)

#66 MD(6209.00) Inc(1.1) Azm(15.9) TVD(6162.60)
VS(-160.42) NS(186.09) EW(582.17) TEMP(0.0)

#67 MD(6304.00) Inc(0.2) Azm(264.4) TVD(6257.60)
VS(-161.27) NS(186.95) EW(582.25) TEMP(0.0)



#68 MD(6399.00) Inc(0.4) Azm(205.0) TVD(6352.60)
 VS(-160.97) NS(186.63) EW(581.95) TEMP(0.0)

#69 MD(6494.00) Inc(0.8) Azm(204.1) TVD(6447.59)
 VS(-160.08) NS(185.73) EW(581.54) TEMP(0.0)

#70 MD(6590.00) Inc(2.0) Azm(188.0) TVD(6543.56)
 VS(-157.83) NS(183.46) EW(581.03) TEMP(0.0)

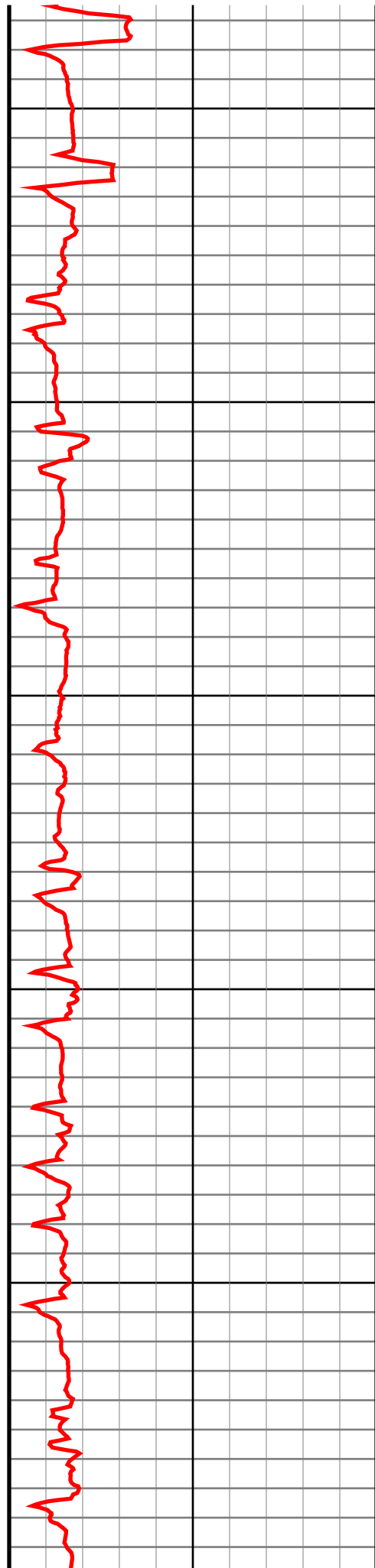
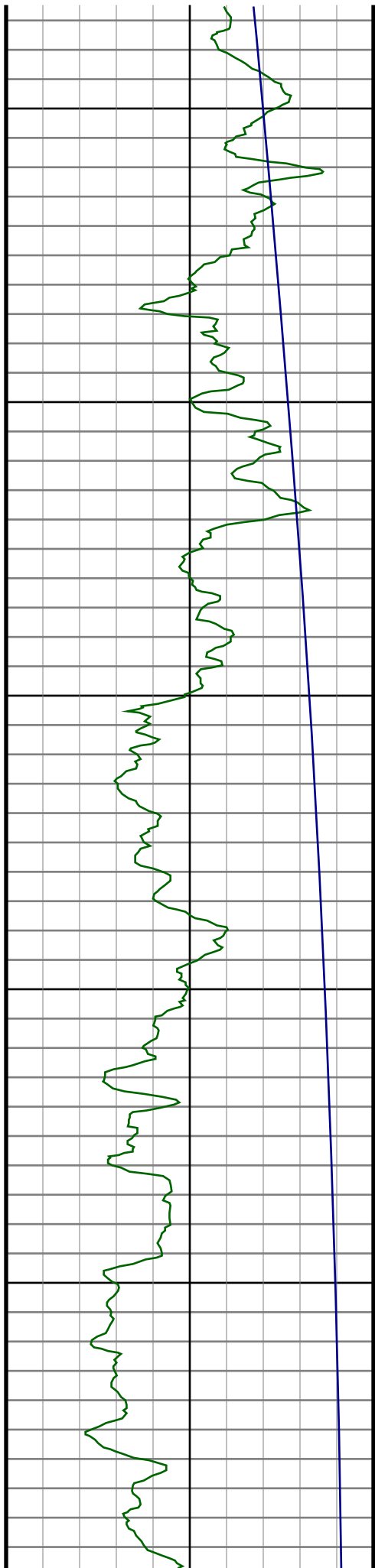
#71 MD(6637.00) Inc(5.6) Azm(173.7) TVD(6590.45)
 VS(-154.74) NS(180.36) EW(581.17) TEMP(0.0)

#72 MD(6685.00) Inc(9.9) Azm(180.8) TVD(6638.00)
 VS(-148.28) NS(173.91) EW(581.37) TEMP(0.0)

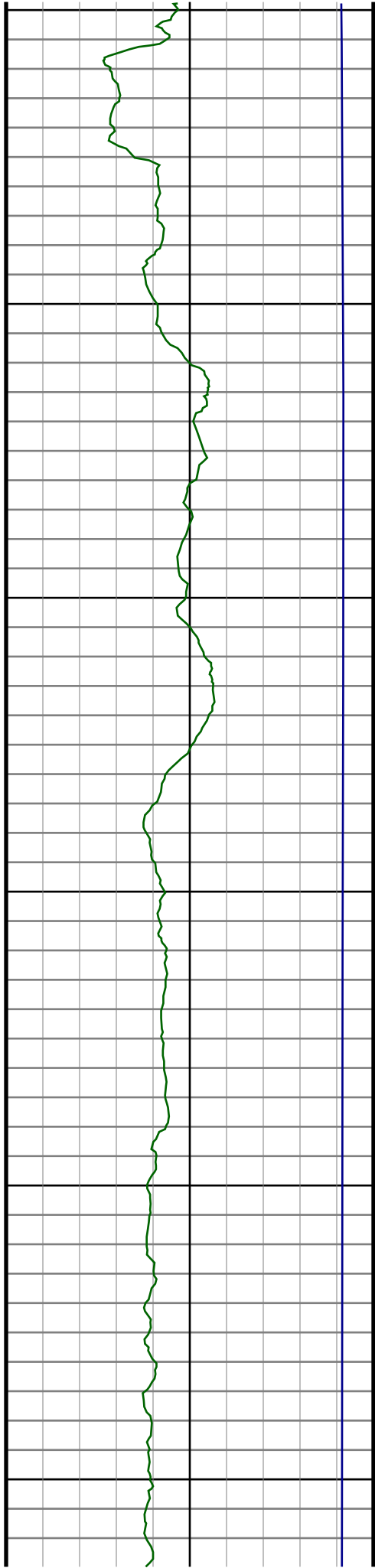
#73 MD(6732.00) Inc(14.2) Azm(182.9) TVD(6683.96)
 VS(-138.50) NS(164.11) EW(581.02) TEMP(0.0)

#74 MD(6780.00) Inc(18.4) Azm(186.6) TVD(6730.02)
 VS(-125.16) NS(150.69) EW(579.85) TEMP(0.0)

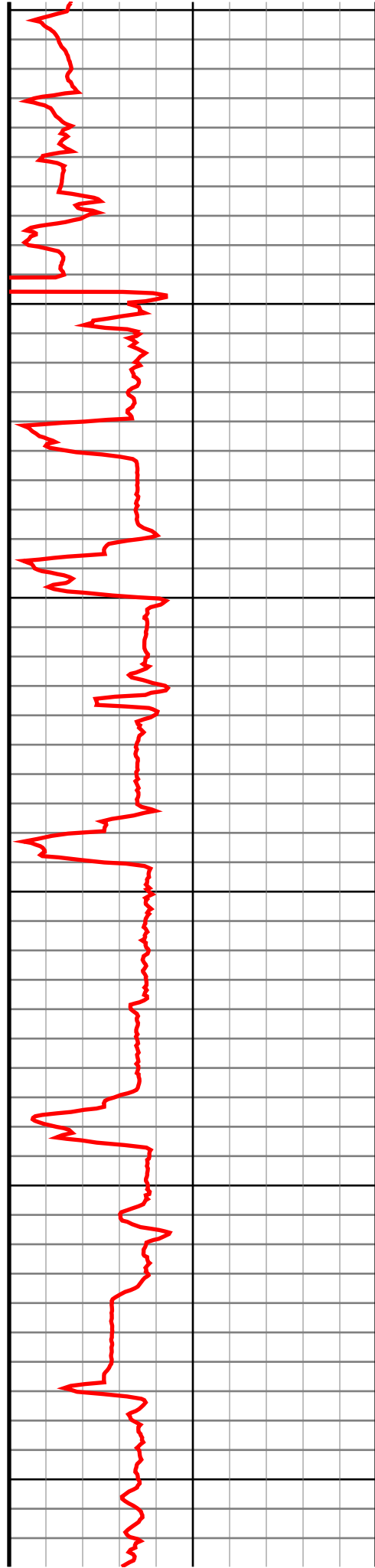
#75 MD(6827.00) Inc(22.8) Azm(184.3) TVD(6774.00)
 VS(-108.78) NS(134.24) EW(578.31) TEMP(0.0)



#76 MD(6876.00) Inc(27.5) Azm(182.3) TVD(6818.34) VS(-88.07) NS(113.45) EW(577.15) TEMP(0.0)
#77 MD(6923.00) Inc(32.9) Azm(181.1) TVD(6858.95) VS(-64.50) NS(89.83) EW(576.47) TEMP(0.0)
#78 MD(6971.00) Inc(37.4) Azm(179.2) TVD(6898.19) VS(-36.90) NS(62.21) EW(576.42) TEMP(0.0)
#79 MD(7018.00) Inc(41.2) Azm(181.5) TVD(6934.55) VS(-7.18) NS(32.45) EW(576.21) TEMP(0.0)
#80 MD(7066.00) Inc(47.3) Azm(183.4) TVD(6968.92) VS(26.17) NS(-1.00) EW(574.75) TEMP(0.0)
#81 MD(7113.00) Inc(55.1) Azm(183.4) TVD(6998.35) VS(62.57) NS(-37.53) EW(572.58) TEMP(0.0)
#82 MD(7161.00) Inc(61.4) Azm(182.7) TVD(7023.60) VS(103.18) NS(-78.27) EW(570.42) TEMP(0.0)
#83 MD(7208.00) Inc(66.4) Azm(183.4) TVD(7044.27) VS(145.17) NS(-120.40) EW(568.17) TEMP(0.0)
#84 MD(7256.00) Inc(70.6) Azm(182.5) TVD(7061.86) VS(189.62) NS(-164.99) EW(565.88) TEMP(0.0)
#85 MD(7303.00) Inc(73.9) Azm(181.6) TVD(7076.18) VS(234.23) NS(-209.72) EW(564.28) TEMP(0.0)
#86 MD(7351.00) Inc(78.7) Azm(180.9) TVD(7087.55) VS(280.75) NS(-256.33) EW(563.27) TEMP(0.0)



7400
7500
7600
7700
7800
7900



#88 MD(7412.00) Inc(85.7) Azm(181.6) TVD(7096.24)
VS(340.98) NS(-316.66) EW(562.13) TEMP(0.0)

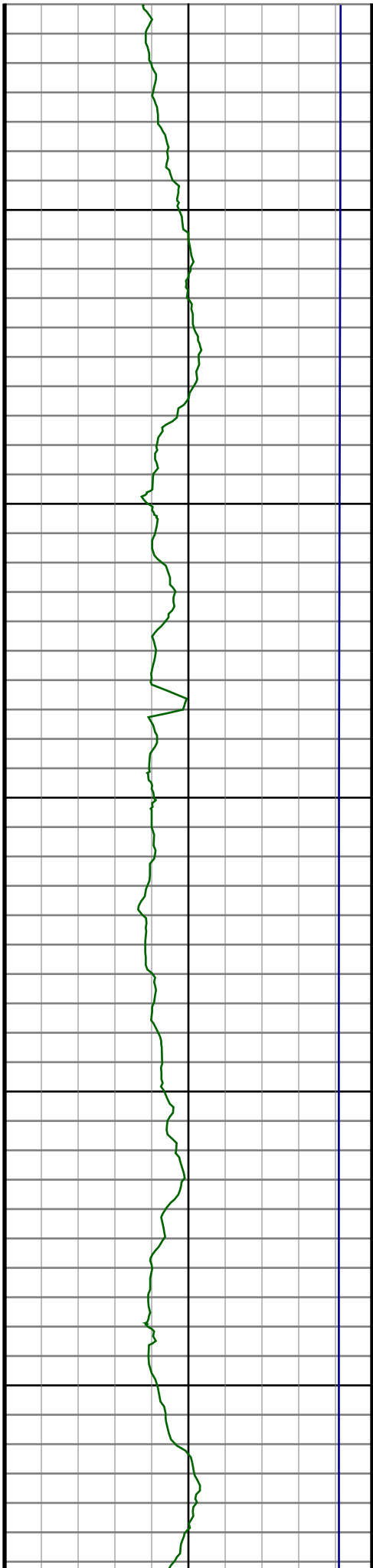
#89 MD(7531.00) Inc(89.0) Azm(183.0) TVD(7101.74)
VS(459.41) NS(-435.42) EW(557.35) TEMP(0.0)

#90 MD(7626.00) Inc(91.7) Azm(181.4) TVD(7101.16)
VS(554.08) NS(-530.34) EW(553.71) TEMP(0.0)

#91 MD(7720.00) Inc(90.8) Azm(181.6) TVD(7099.11)
VS(647.82) NS(-624.28) EW(551.25) TEMP(0.0)

#92 MD(7815.00) Inc(90.3) Azm(180.4) TVD(7098.20)
VS(742.64) NS(-719.26) EW(549.59) TEMP(0.0)

#93 MD(7909.00) Inc(90.9) Azm(180.4) TVD(7097.21)
VS(836.51) NS(-813.25) EW(548.93) TEMP(0.0)



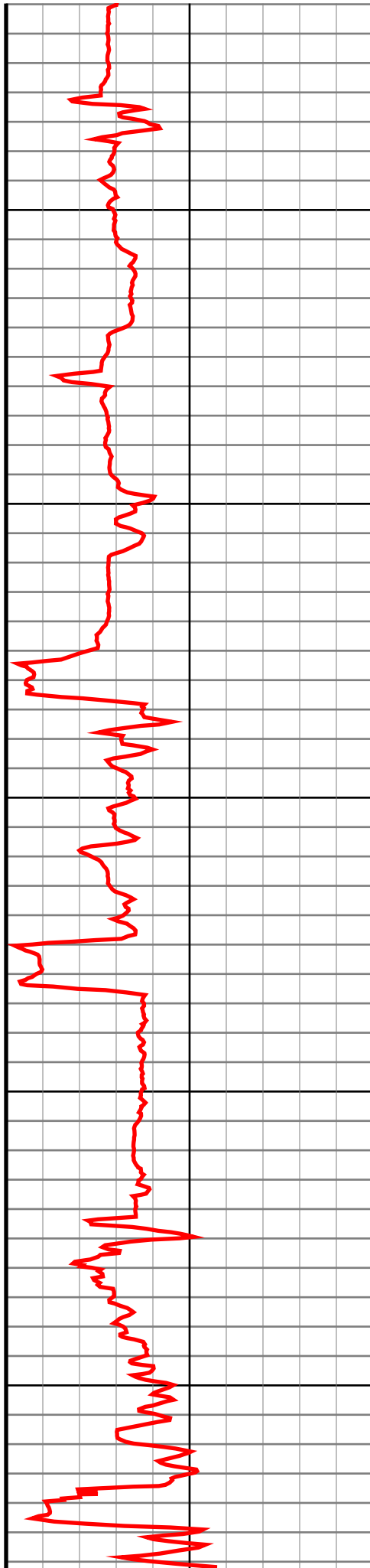
8000

8100

8200

8300

8400



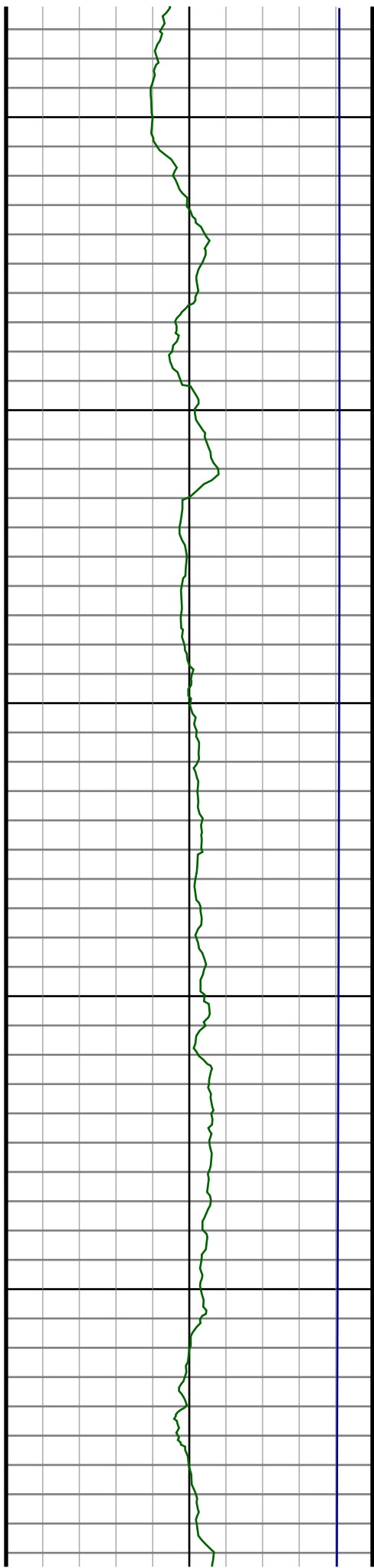
#94 MD(8003.00) Inc(91.0) Azm(180.2) TVD(7095.66)
VS(930.39) NS(-907.24) EW(548.44) TEMP(0.0)

#95 MD(8098.00) Inc(91.7) Azm(179.7) TVD(7093.42)
VS(1025.27) NS(-1002.21) EW(548.52) TEMP(0.0)

#96 MD(8191.00) Inc(90.7) Azm(179.1) TVD(7091.47)
VS(1118.20) NS(-1095.18) EW(549.50) TEMP(0.0)

#97 MD(8285.00) Inc(90.0) Azm(180.7) TVD(7090.89)
VS(1212.11) NS(-1189.18) EW(549.66) TEMP(0.0)

#98 MD(8379.00) Inc(89.9) Azm(180.0) TVD(7090.98)
VS(1305.99) NS(-1283.18) EW(549.09) TEMP(0.0)



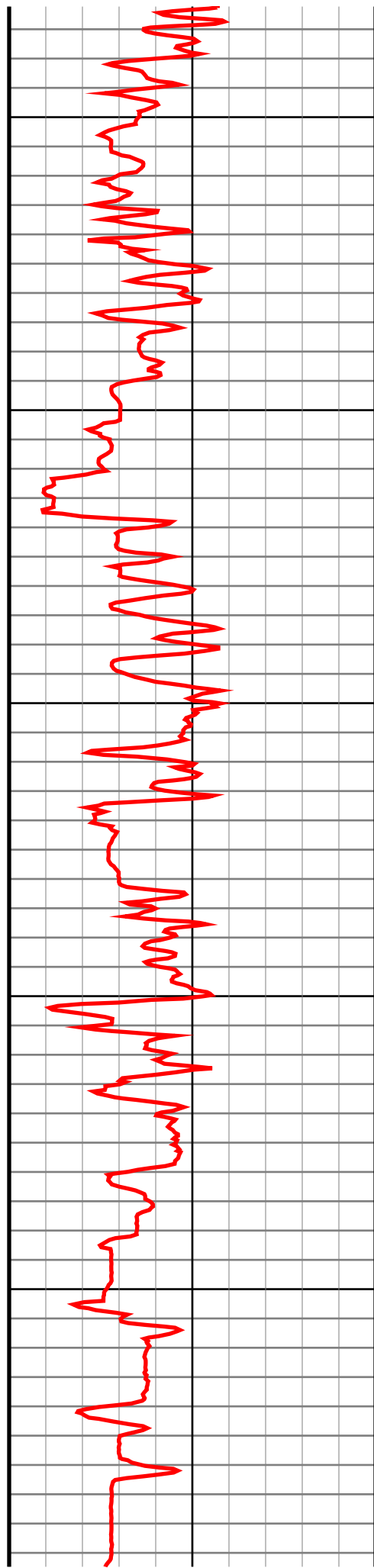
8500

8600

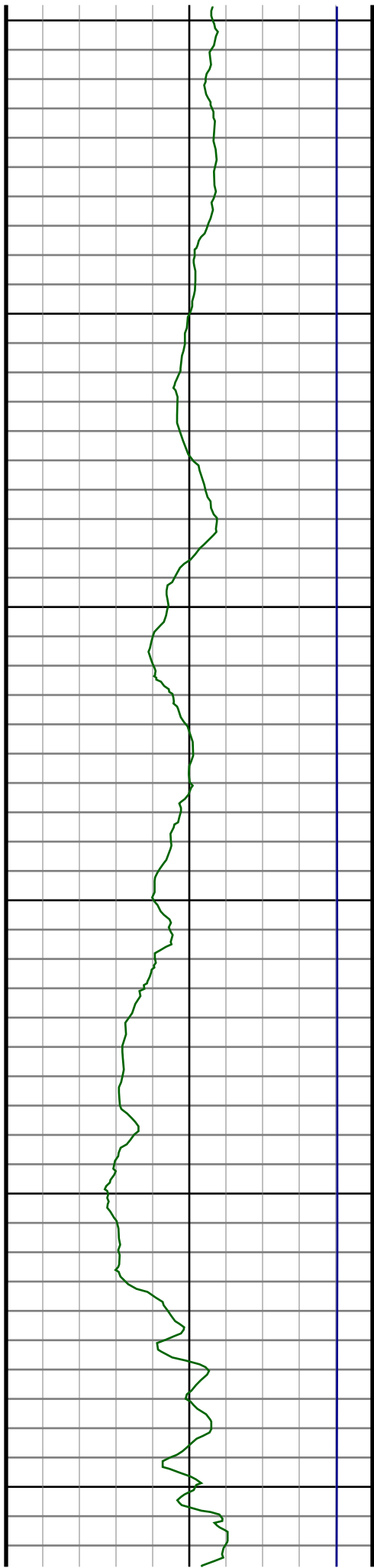
8700

8800

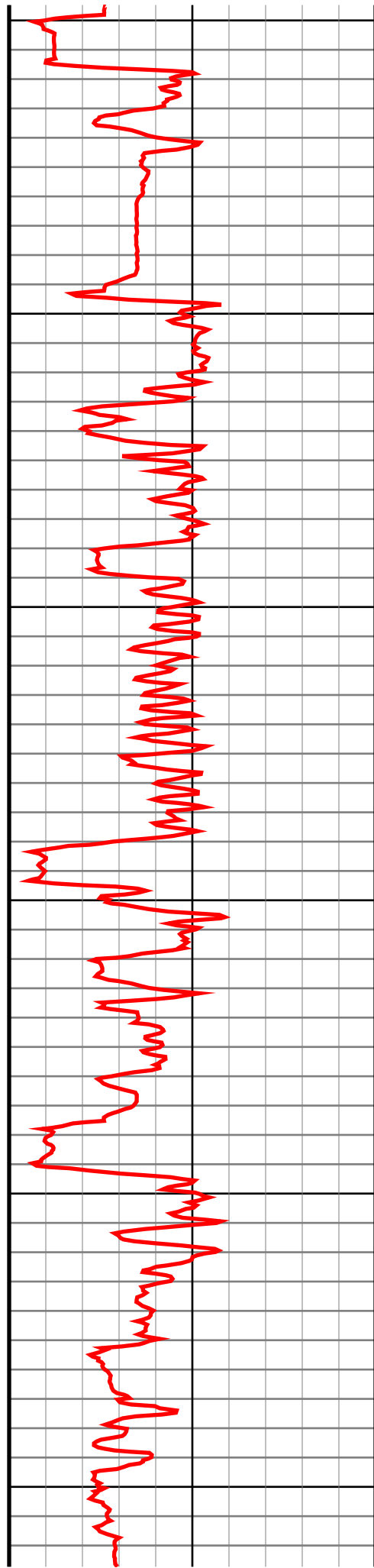
8900



#99 MD(8473.00) Inc(89.6) Azm(180.9) TVD(7091.39) VS(1399.86) NS(-1377.17) EW(548.35) TEMP(0.0)
#100 MD(8567.00) Inc(89.3) Azm(180.4) TVD(7092.29) VS(1493.72) NS(-1471.16) EW(547.28) TEMP(0.0)
#101 MD(8662.00) Inc(91.3) Azm(181.1) TVD(7091.79) VS(1588.56) NS(-1566.15) EW(546.04) TEMP(0.0)
#102 MD(8755.00) Inc(91.3) Azm(180.9) TVD(7089.68) VS(1681.36) NS(-1659.11) EW(544.42) TEMP(0.0)
#103 MD(8849.00) Inc(91.6) Azm(180.6) TVD(7087.30) VS(1775.18) NS(-1753.07) EW(543.19) TEMP(0.0)
#104 MD(8944.00) Inc(91.9) Azm(180.4) TVD(7084.40) VS(1870.00) NS(-1848.02) EW(542.36) TEMP(0.0)



9000
9100
9200
9300
9400
9500



#105 MD(9038.00) Inc(90.0) Azm(180.6) TVD(7082.84)
VS(1963.85) NS(-1942.00) EW(541.54) TEMP(0.0)

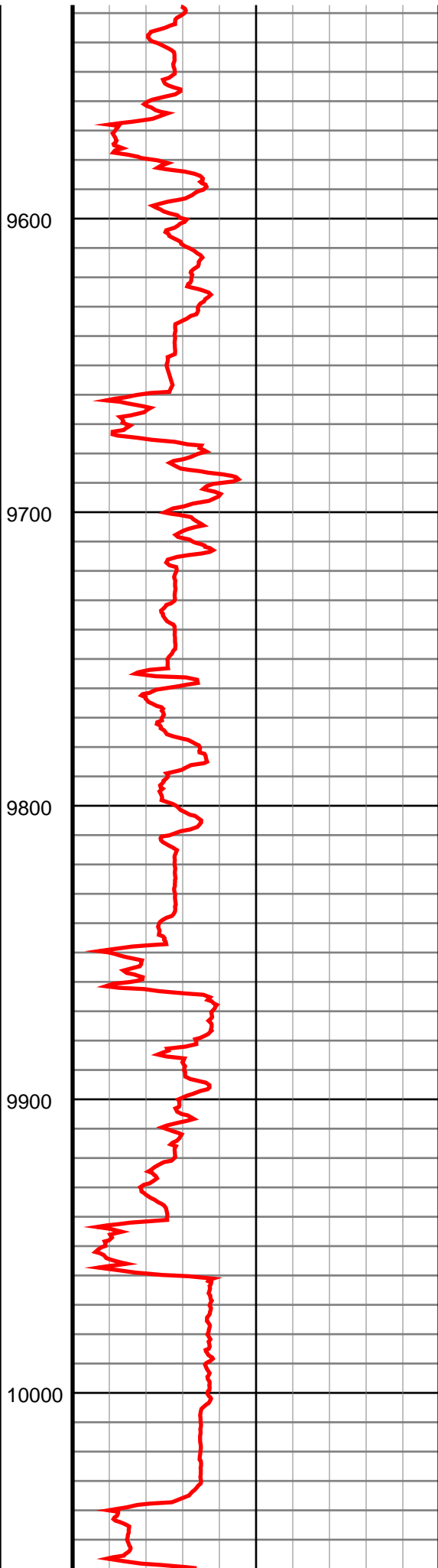
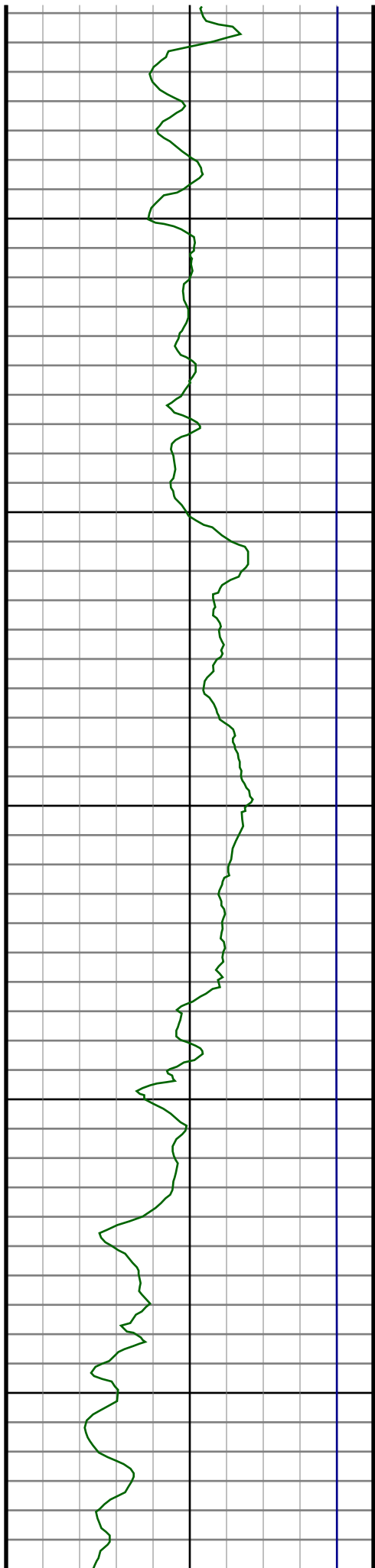
#106 MD(9133.00) Inc(89.9) Azm(180.0) TVD(7082.93)
VS(2058.74) NS(-2037.00) EW(541.04) TEMP(0.0)

#107 MD(9227.00) Inc(89.6) Azm(179.9) TVD(7083.34)
VS(2152.65) NS(-2131.00) EW(541.12) TEMP(0.0)

#108 MD(9322.00) Inc(88.9) Azm(181.1) TVD(7084.58)
VS(2247.51) NS(-2225.98) EW(540.29) TEMP(0.0)

#109 MD(9416.00) Inc(90.6) Azm(182.1) TVD(7084.99)
VS(2341.26) NS(-2319.94) EW(537.67) TEMP(0.0)

#110 MD(9511.00) Inc(91.8) Azm(181.6) TVD(7083.00)
VS(2435.96) NS(-2414.87) EW(534.60) TEMP(0.0)



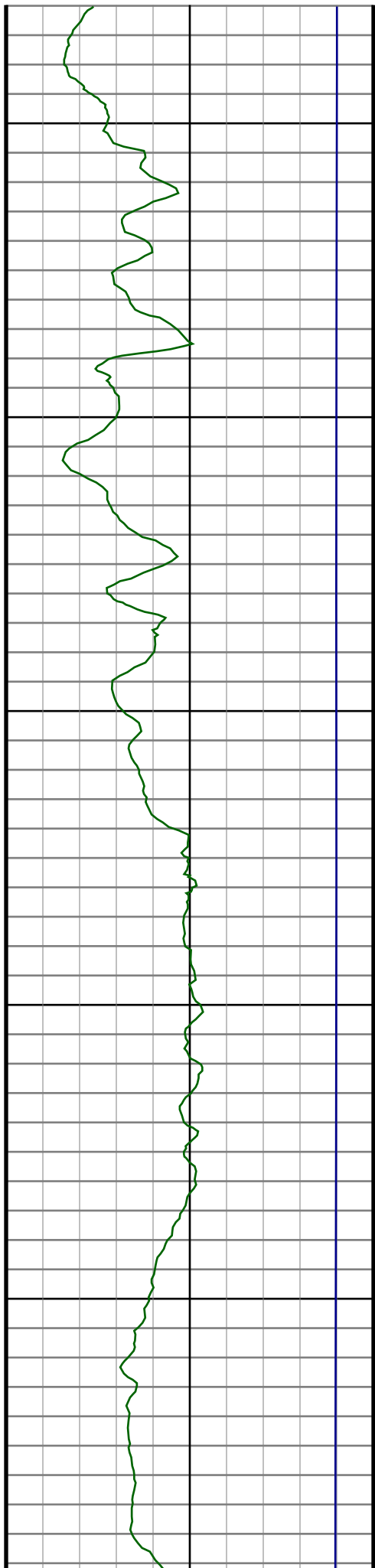
#111 MD(9605.00) Inc(91.2) Azm(182.0) TVD(7080.54)
VS(2529.67) NS(-2508.79) EW(531.65) TEMP(0.0)

#112 MD(9699.00) Inc(90.2) Azm(182.0) TVD(7079.39)
VS(2623.37) NS(-2602.72) EW(528.37) TEMP(0.0)

#113 MD(9794.00) Inc(90.7) Azm(181.3) TVD(7078.65)
VS(2718.11) NS(-2697.68) EW(525.64) TEMP(0.0)

#114 MD(9888.00) Inc(89.1) Azm(179.5) TVD(7078.81)
VS(2811.98) NS(-2791.67) EW(524.98) TEMP(0.0)

#115 MD(9983.00) Inc(89.1) Azm(178.8) TVD(7080.30)
VS(2906.93) NS(-2886.65) EW(526.39) TEMP(0.0)



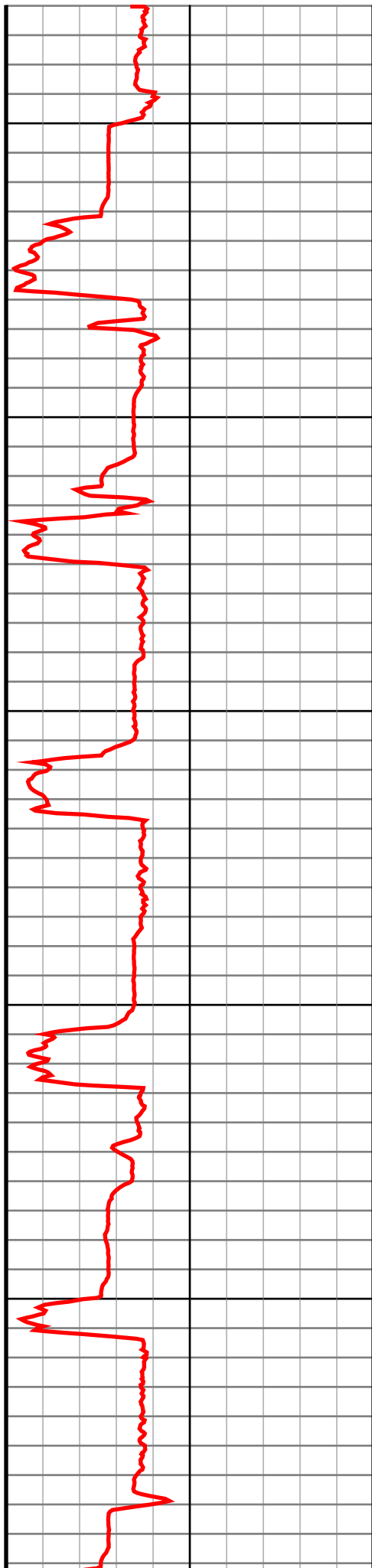
10100

10200

10300

10400

10500



#116 MD(10077.00) Inc(90.4) Azm(179.5) TVD(7080.71)
VS(3000.89) NS(-2980.64) EW(527.78) TEMP(0.0)

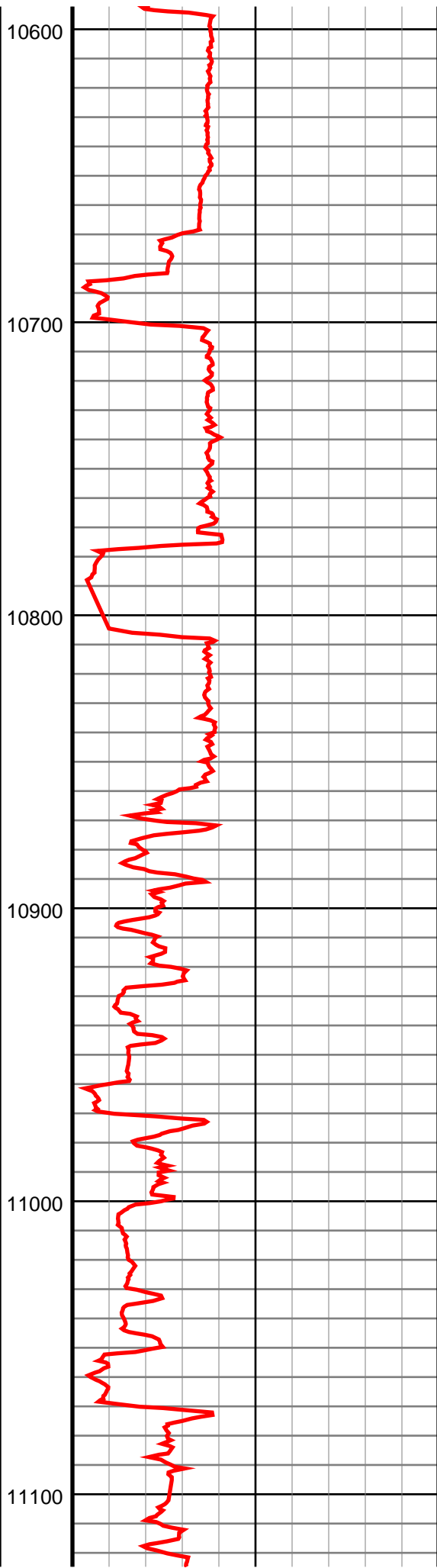
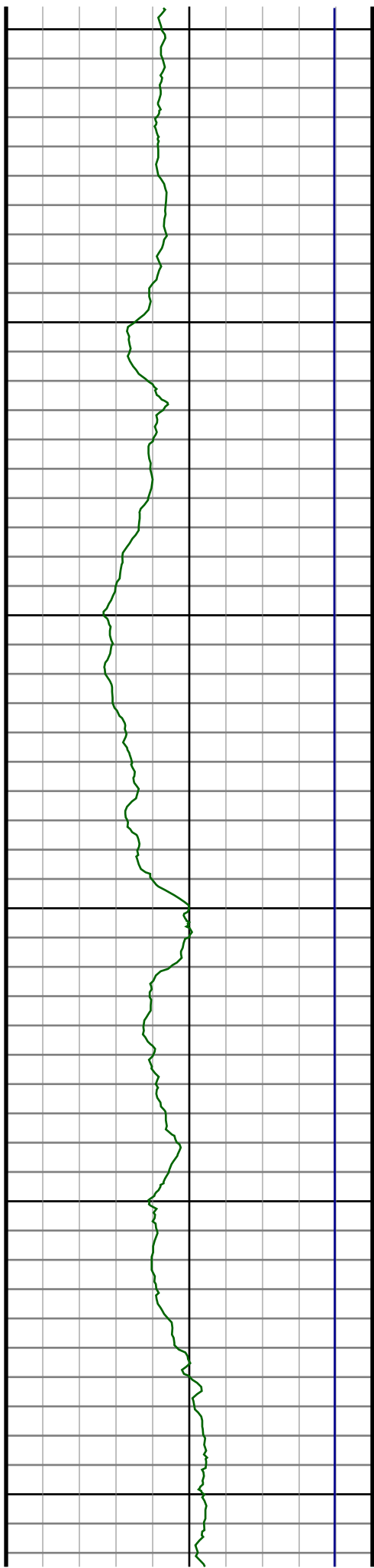
#117 MD(10170.00) Inc(91.5) Azm(178.6) TVD(7079.17)
VS(3093.84) NS(-3073.61) EW(529.33) TEMP(0.0)

#118 MD(10262.00) Inc(89.5) Azm(179.0) TVD(7078.37)
VS(3185.81) NS(-3165.58) EW(531.25) TEMP(0.0)

#119 MD(10354.00) Inc(89.8) Azm(180.4) TVD(7078.93)
VS(3277.73) NS(-3257.57) EW(531.73) TEMP(0.0)

#120 MD(10446.00) Inc(91.5) Azm(182.1) TVD(7077.89)
VS(3369.52) NS(-3349.54) EW(529.73) TEMP(0.0)

#121 MD(10538.00) Inc(90.7) Azm(182.8) TVD(7076.12)
VS(3461.16) NS(-3441.44) EW(525.79) TEMP(0.0)



#122 MD(10630.00) Inc(90.8) Azm(183.2) TVD(7074.92)
VS(3552.73) NS(-3533.30) EW(520.98) TEMP(0.0)

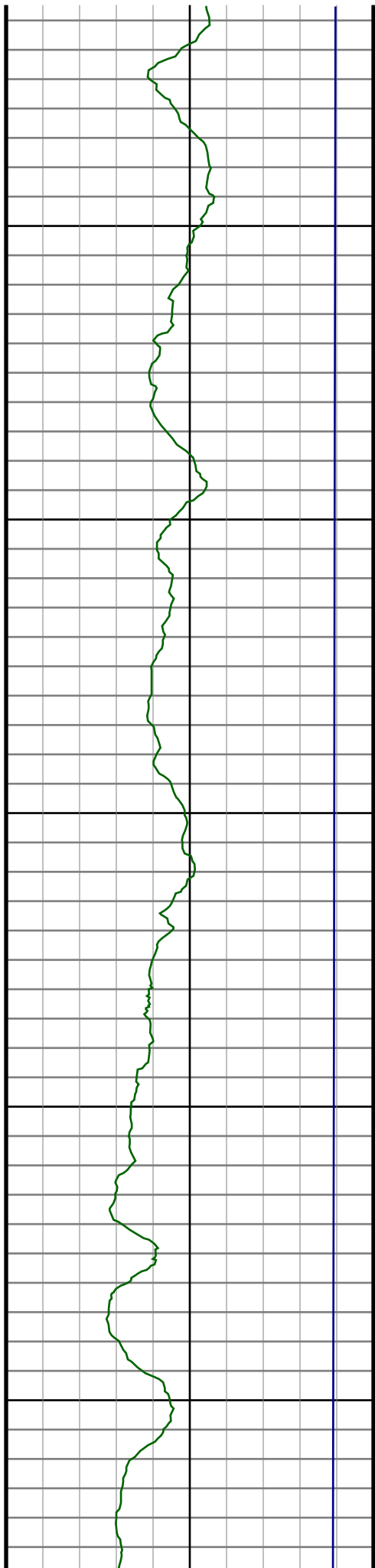
#123 MD(10722.00) Inc(89.4) Azm(179.9) TVD(7074.75)
VS(3644.48) NS(-3625.25) EW(518.49) TEMP(0.0)

#124 MD(10814.00) Inc(90.0) Azm(180.9) TVD(7075.24)
VS(3736.36) NS(-3717.25) EW(517.85) TEMP(0.0)

#125 MD(10906.00) Inc(89.4) Azm(180.4) TVD(7075.72)
VS(3828.22) NS(-3809.24) EW(516.81) TEMP(0.0)

#126 MD(10998.00) Inc(89.7) Azm(180.9) TVD(7076.44)
VS(3920.08) NS(-3901.23) EW(515.76) TEMP(0.0)

#127 MD(11090.00) Inc(90.4) Azm(181.3) TVD(7076.36)
VS(4011.89) NS(-3993.21) EW(514.00) TEMP(0.0)



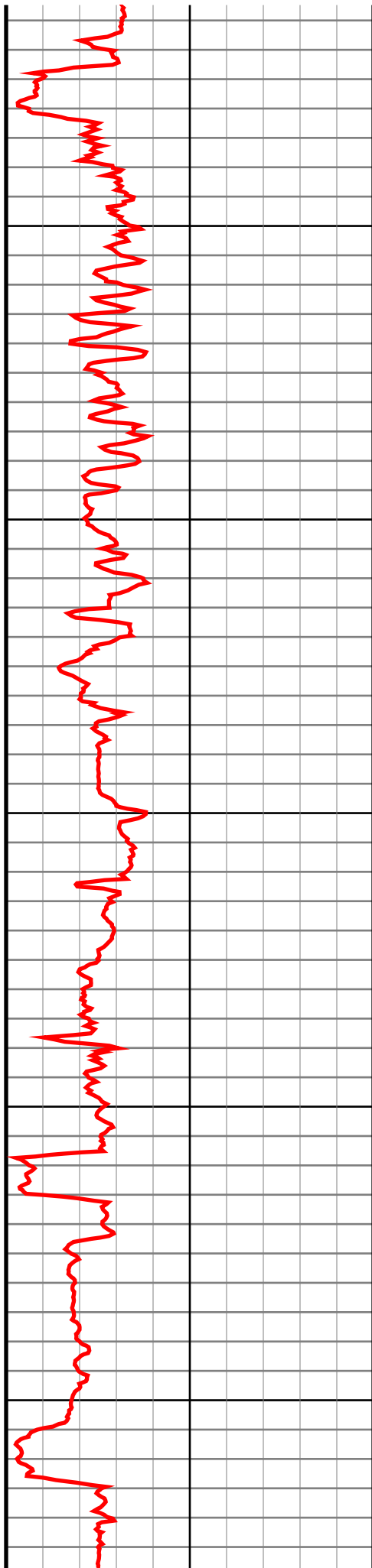
11200

11300

11400

11500

11600



#128 MD(11182.00) Inc(91.2) Azm(180.9) TVD(7075.08)
VS(4103.70) NS(-4085.19) EW(512.23) TEMP(0.0)

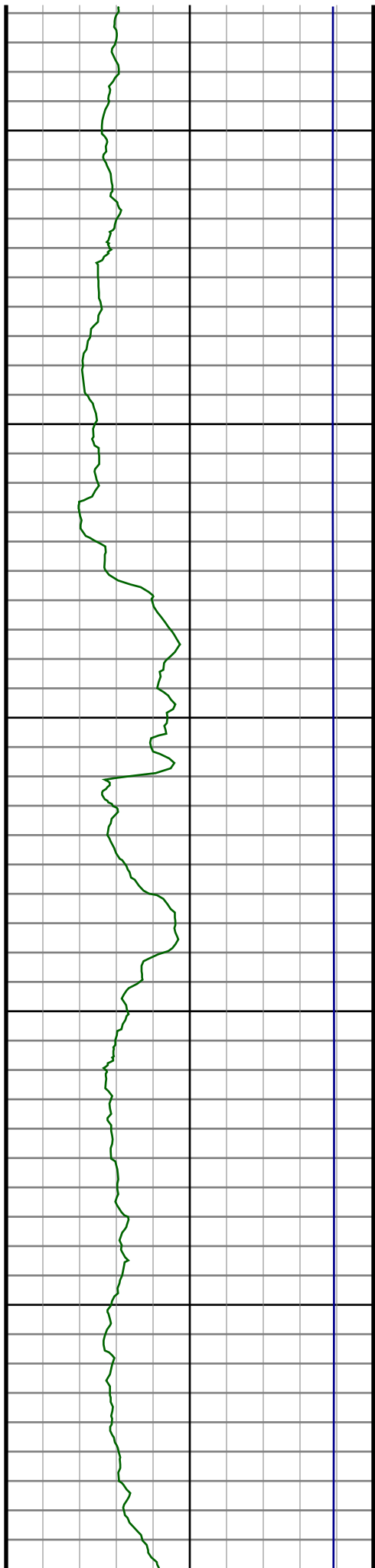
#129 MD(11275.00) Inc(90.8) Azm(180.6) TVD(7073.45)
VS(4196.54) NS(-4178.16) EW(511.01) TEMP(0.0)

#130 MD(11367.00) Inc(90.7) Azm(180.6) TVD(7072.25)
VS(4288.39) NS(-4270.15) EW(510.05) TEMP(0.0)

#131 MD(11459.00) Inc(90.6) Azm(179.7) TVD(7071.21)
VS(4380.29) NS(-4362.14) EW(509.81) TEMP(0.0)

#132 MD(11551.00) Inc(91.6) Azm(180.4) TVD(7069.44)
VS(4472.18) NS(-4454.13) EW(509.73) TEMP(0.0)

#133 MD(11643.00) Inc(90.4) Azm(181.8) TVD(7067.83)
VS(4563.97) NS(-4546.09) EW(507.96) TEMP(0.0)



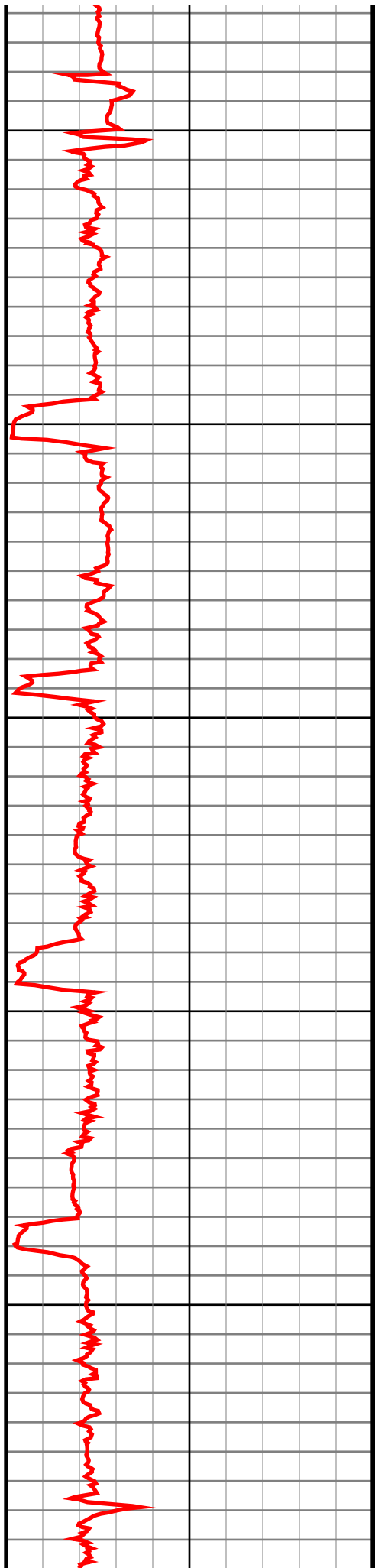
11700

11800

11900

12000

12100



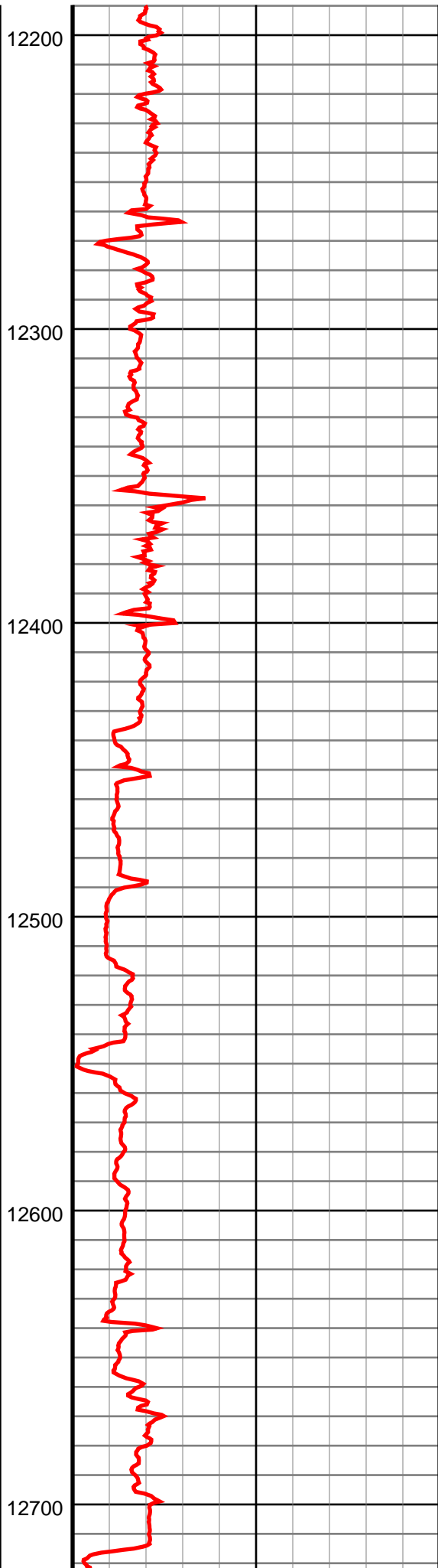
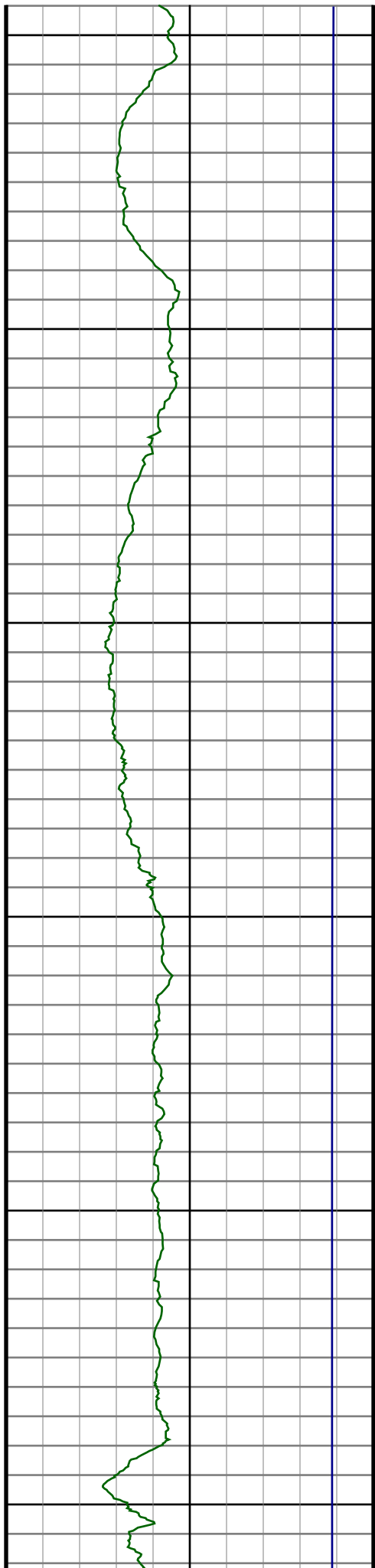
#134 MD(11735.00) Inc(91.0) Azm(182.7) TVD(7066.71)
VS(4655.65) NS(-4638.01) EW(504.35) TEMP(0.0)

#135 MD(11827.00) Inc(88.6) Azm(180.7) TVD(7067.03)
VS(4747.39) NS(-4729.96) EW(501.62) TEMP(0.0)

#136 MD(11919.00) Inc(88.3) Azm(180.9) TVD(7069.52)
VS(4839.20) NS(-4821.92) EW(500.34) TEMP(0.0)

#137 MD(12014.00) Inc(89.5) Azm(181.8) TVD(7071.34)
VS(4933.97) NS(-4916.87) EW(498.10) TEMP(0.0)

#138 MD(12108.00) Inc(91.0) Azm(181.1) TVD(7070.93)
VS(5027.74) NS(-5010.84) EW(495.72) TEMP(0.0)



#139 MD(12203.00) Inc(91.1) Azm(180.9) TVD(7069.19)
VS(5122.54) NS(-5105.81) EW(494.06) TEMP(0.0)

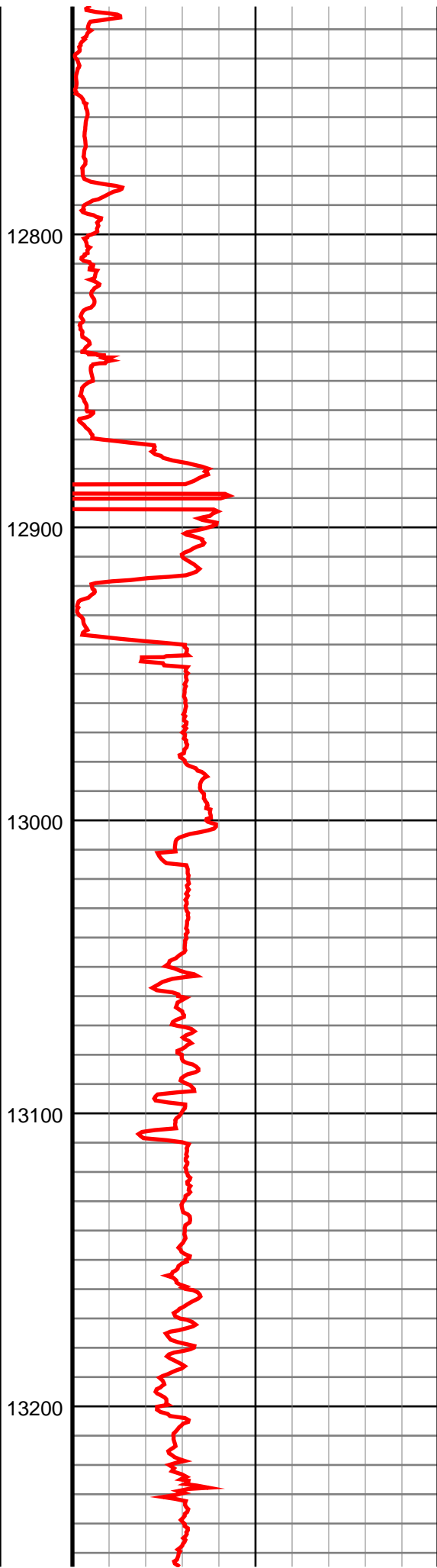
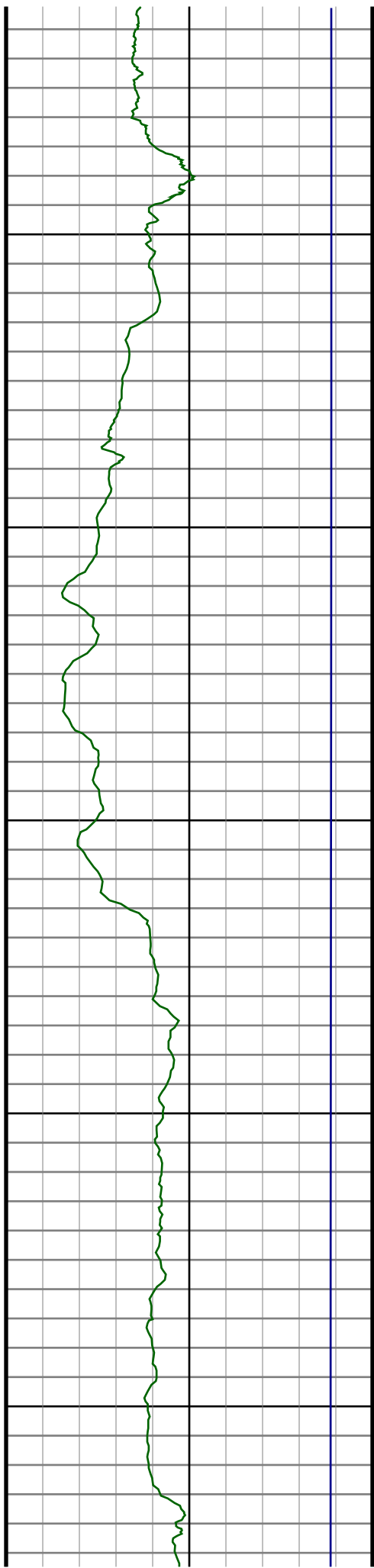
#140 MD(12297.00) Inc(90.8) Azm(180.2) TVD(7067.63)
VS(5216.40) NS(-5199.79) EW(493.16) TEMP(0.0)

#141 MD(12392.00) Inc(90.7) Azm(180.6) TVD(7066.39)
VS(5311.26) NS(-5294.78) EW(492.50) TEMP(0.0)

#142 MD(12486.00) Inc(90.4) Azm(180.0) TVD(7065.49)
VS(5405.15) NS(-5388.77) EW(492.01) TEMP(0.0)

#143 MD(12581.00) Inc(90.5) Azm(180.0) TVD(7064.74)
VS(5500.05) NS(-5483.77) EW(492.01) TEMP(0.0)

#144 MD(12675.00) Inc(89.5) Azm(178.1) TVD(7064.74)
VS(5594.01) NS(-5577.75) EW(493.57) TEMP(0.0)



#145 MD(12769.00) Inc(89.8) Azm(179.3) TVD(7065.32)
VS(5687.99) NS(-5671.72) EW(495.70) TEMP(0.0)

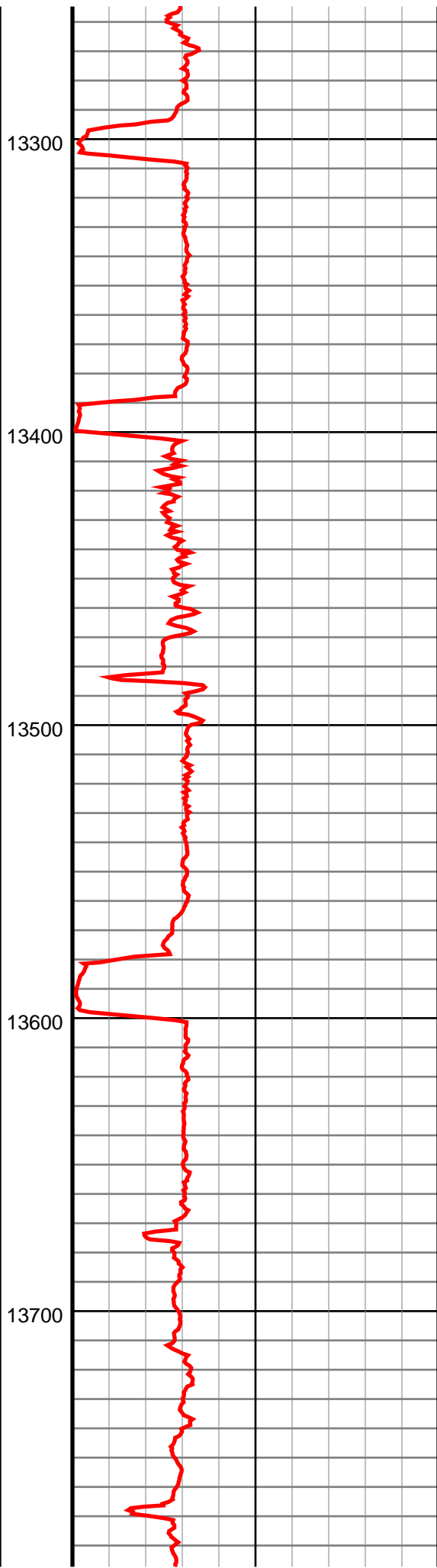
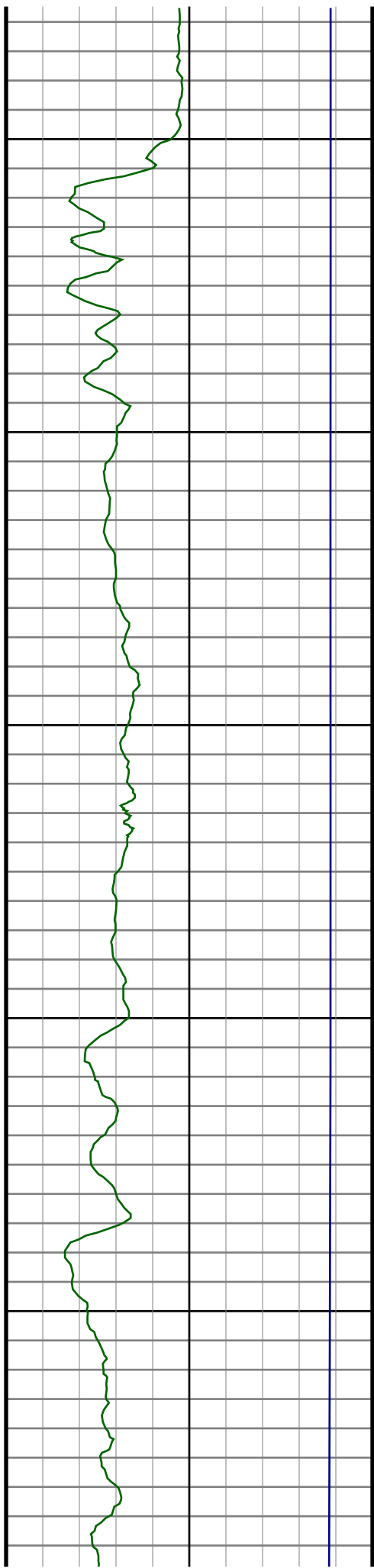
#146 MD(12863.00) Inc(90.4) Azm(179.9) TVD(7065.15)
VS(5781.92) NS(-5765.72) EW(496.35) TEMP(0.0)

#147 MD(12957.00) Inc(90.3) Azm(182.0) TVD(7064.58)
VS(5875.74) NS(-5859.70) EW(494.80) TEMP(0.0)

#148 MD(13052.00) Inc(90.7) Azm(182.8) TVD(7063.75)
VS(5970.39) NS(-5954.61) EW(490.82) TEMP(0.0)

#149 MD(13146.00) Inc(90.2) Azm(182.0) TVD(7063.01)
VS(6064.04) NS(-6048.52) EW(486.88) TEMP(0.0)

#150 MD(13241.00) Inc(90.0) Azm(181.6) TVD(7062.84)
VS(6158.77) NS(-6143.48) EW(483.90) TEMP(0.0)



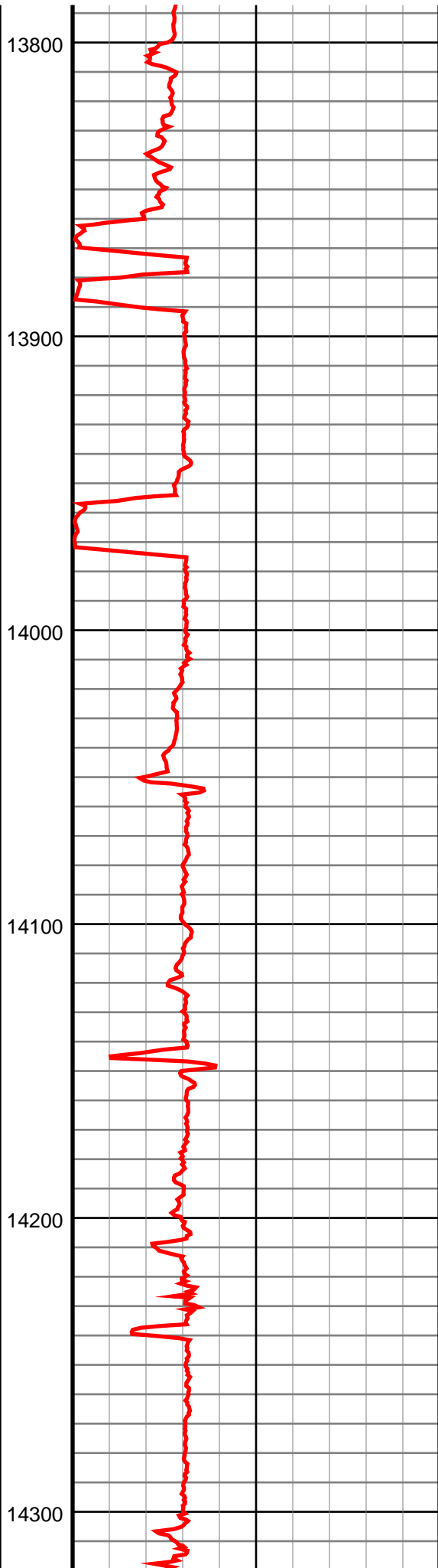
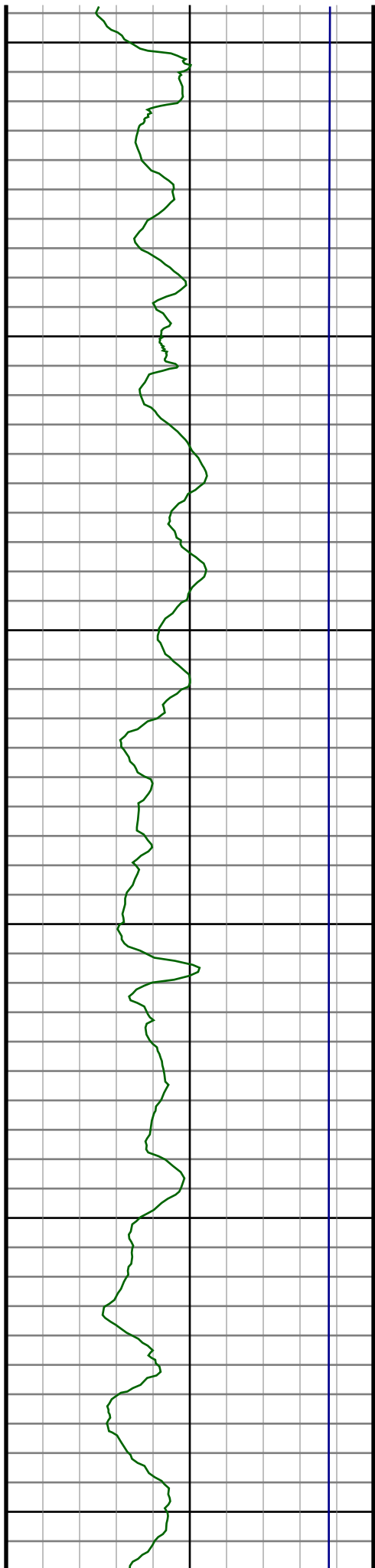
#151 MD(13336.00) Inc(89.9) Azm(182.1) TVD(7062.93)
VS(6253.50) NS(-6238.43) EW(480.83) TEMP(0.0)

#152 MD(13430.00) Inc(90.7) Azm(182.3) TVD(7062.43)
VS(6347.18) NS(-6332.36) EW(477.22) TEMP(0.0)

#153 MD(13524.00) Inc(89.0) Azm(180.9) TVD(7062.68)
VS(6440.93) NS(-6426.31) EW(474.60) TEMP(0.0)

#154 MD(13618.00) Inc(91.2) Azm(182.1) TVD(7062.52)
VS(6534.69) NS(-6520.27) EW(472.14) TEMP(0.0)

#155 MD(13712.00) Inc(91.6) Azm(181.3) TVD(7060.22)
VS(6628.41) NS(-6614.20) EW(469.35) TEMP(0.0)



#156 MD(13806.00) Inc(91.9) Azm(180.9) TVD(7057.35)
VS(6722.18) NS(-6708.14) EW(467.55) TEMP(0.0)

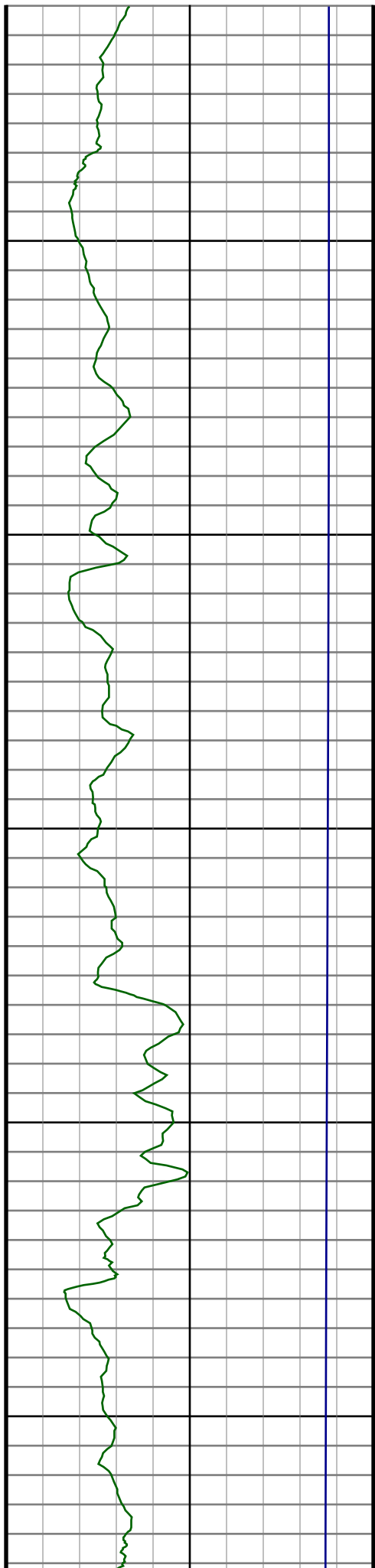
#157 MD(13900.00) Inc(91.5) Azm(180.7) TVD(7054.56)
VS(6815.98) NS(-6802.09) EW(466.23) TEMP(0.0)

#158 MD(13994.00) Inc(89.5) Azm(181.1) TVD(7053.74)
VS(6909.81) NS(-6896.07) EW(464.76) TEMP(0.0)

#159 MD(14088.00) Inc(89.9) Azm(180.7) TVD(7054.23)
VS(7003.64) NS(-6990.06) EW(463.28) TEMP(0.0)

#160 MD(14182.00) Inc(90.2) Azm(180.4) TVD(7054.15)
VS(7097.50) NS(-7084.05) EW(462.38) TEMP(0.0)

#161 MD(14277.00) Inc(90.0) Azm(179.9) TVD(7053.99)
VS(7192.40) NS(-7179.05) EW(462.13) TEMP(0.0)



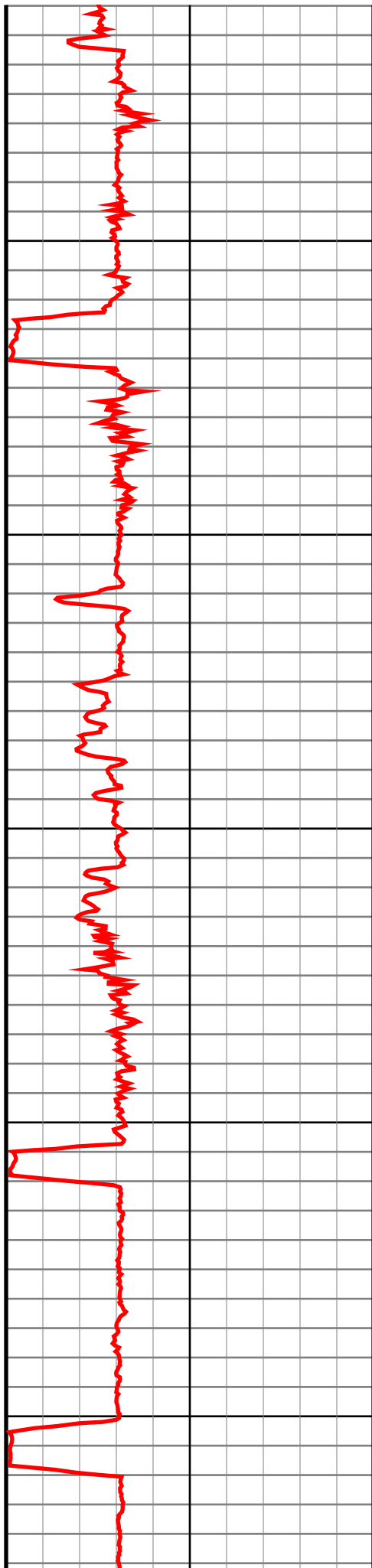
1440

1450

1460

1470

1480



#162 MD(14371.00) Inc(89.4) Azm(179.3) TVD(7054.48)
VS(7286.34) NS(-7273.05) EW(462.79) TEMP(0.0)

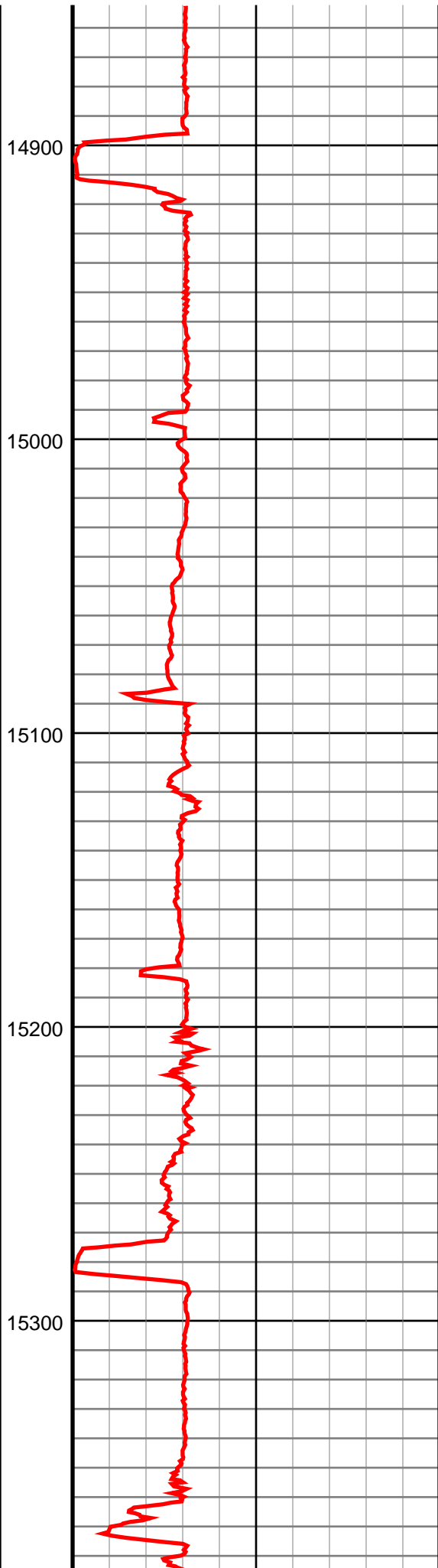
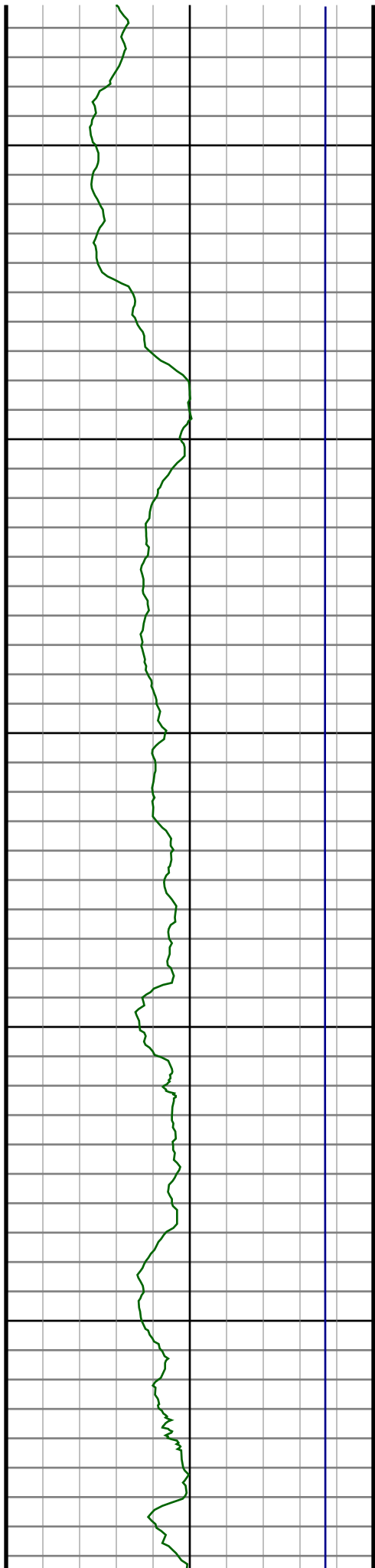
#163 MD(14465.00) Inc(91.0) Azm(179.9) TVD(7054.15)
VS(7380.27) NS(-7367.04) EW(463.44) TEMP(0.0)

#164 MD(14560.00) Inc(91.5) Azm(179.7) TVD(7052.08)
VS(7475.17) NS(-7462.02) EW(463.77) TEMP(0.0)

#165 MD(14654.00) Inc(92.2) Azm(179.5) TVD(7049.04)
VS(7569.05) NS(-7555.96) EW(464.43) TEMP(0.0)

#166 MD(14748.00) Inc(91.8) Azm(179.3) TVD(7045.76)
VS(7662.94) NS(-7649.90) EW(465.41) TEMP(0.0)

#167 MD(14842.00) Inc(91.1) Azm(180.6) TVD(7043.38)
VS(7756.83) NS(-7743.87) EW(465.50) TEMP(0.0)



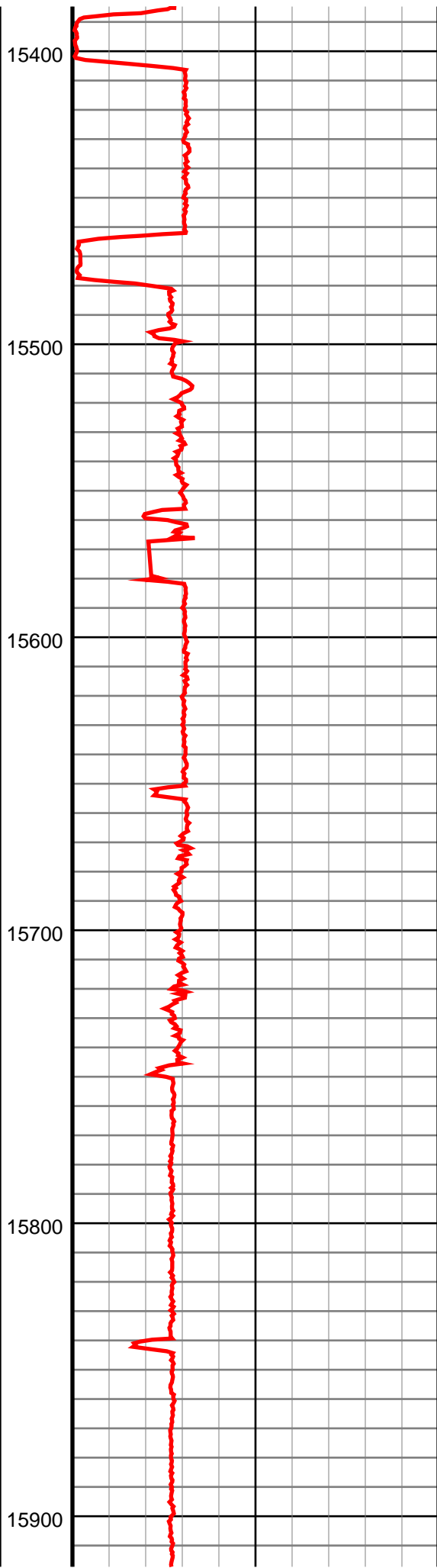
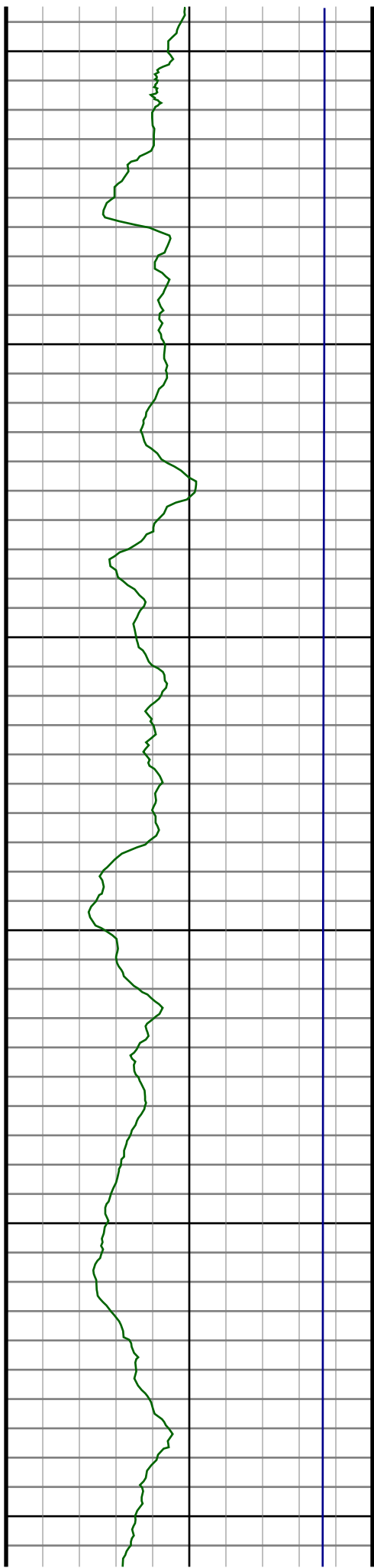
#168 MD(14936.00) Inc(90.2) Azm(181.8) TVD(7042.32)
VS(7850.62) NS(-7837.84) EW(463.53) TEMP(0.0)

#169 MD(15031.00) Inc(90.3) Azm(181.8) TVD(7041.90)
VS(7945.35) NS(-7932.79) EW(460.54) TEMP(0.0)

#170 MD(15125.00) Inc(90.1) Azm(181.8) TVD(7041.57)
VS(8039.08) NS(-8026.75) EW(457.59) TEMP(0.0)

#171 MD(15218.00) Inc(89.6) Azm(182.0) TVD(7041.82)
VS(8131.81) NS(-8119.69) EW(454.51) TEMP(0.0)

#172 MD(15313.00) Inc(89.5) Azm(181.4) TVD(7042.56)
VS(8226.55) NS(-8214.65) EW(451.69) TEMP(0.0)



#173 MD(15407.00) Inc(90.0) Azm(181.1) TVD(7042.97)
VS(8320.34) NS(-8308.62) EW(449.64) TEMP(0.0)

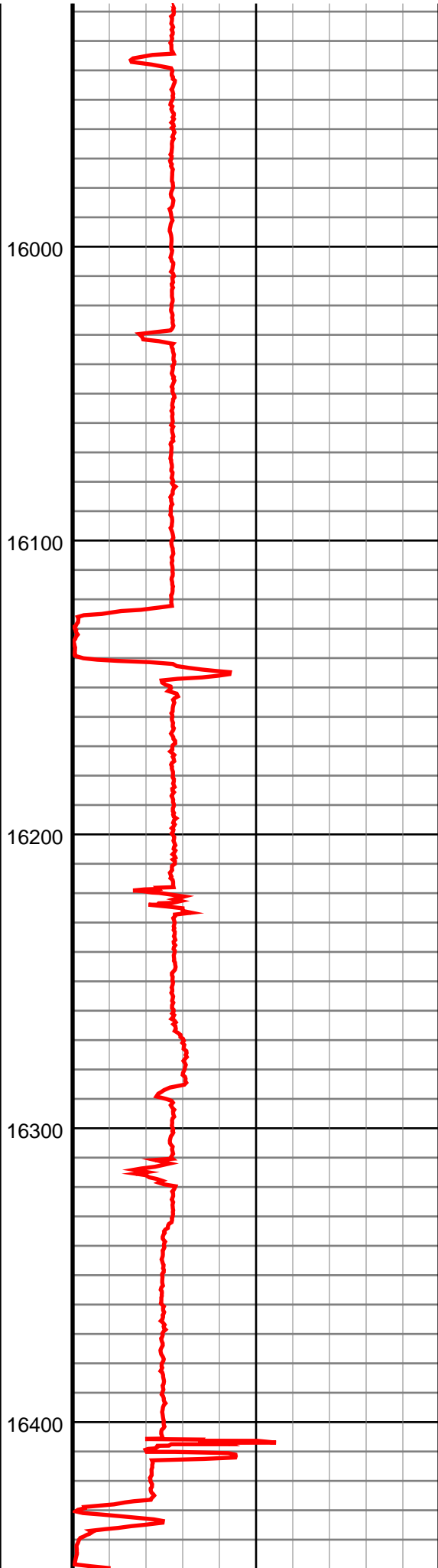
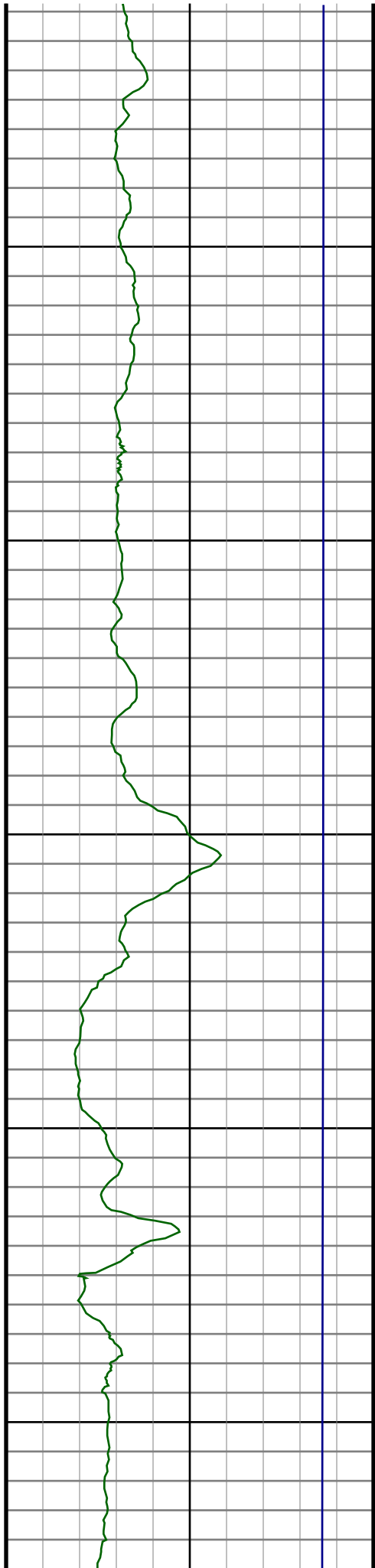
#174 MD(15502.00) Inc(91.1) Azm(182.1) TVD(7042.06)
VS(8415.09) NS(-8403.58) EW(446.99) TEMP(0.0)

#175 MD(15596.00) Inc(91.4) Azm(182.5) TVD(7040.01)
VS(8508.74) NS(-8497.48) EW(443.21) TEMP(0.0)

#176 MD(15691.00) Inc(90.5) Azm(181.8) TVD(7038.44)
VS(8603.41) NS(-8592.40) EW(439.65) TEMP(0.0)

#177 MD(15785.00) Inc(90.4) Azm(181.6) TVD(7037.70)
VS(8697.15) NS(-8686.36) EW(436.86) TEMP(0.0)

#178 MD(15880.00) Inc(90.3) Azm(181.8) TVD(7037.12)
VS(8791.90) NS(-8781.31) EW(434.04) TEMP(0.0)



#179 MD(15974.00) Inc(90.4) Azm(181.6) TVD(7036.54)
VS(8885.64) NS(-8875.27) EW(431.26) TEMP(0.0)

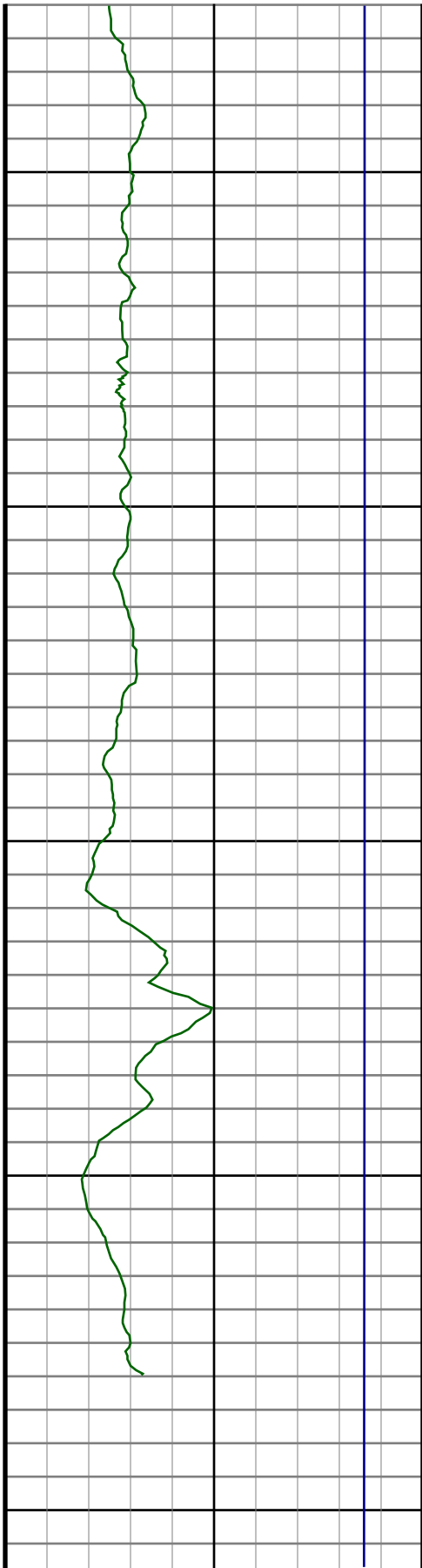
#180 MD(16068.00) Inc(89.9) Azm(181.8) TVD(7036.30)
VS(8979.39) NS(-8969.23) EW(428.47) TEMP(0.0)

#181 MD(16162.00) Inc(90.4) Azm(180.7) TVD(7036.05)
VS(9073.18) NS(-9063.20) EW(426.42) TEMP(0.0)

#182 MD(16256.00) Inc(90.5) Azm(180.9) TVD(7035.31)
VS(9167.02) NS(-9157.19) EW(425.10) TEMP(0.0)

#183 MD(16350.00) Inc(91.3) Azm(181.3) TVD(7033.84)
VS(9260.82) NS(-9251.16) EW(423.30) TEMP(0.0)

#184 MD(16445.00) Inc(90.3) Azm(180.9) TVD(7032.51)
VS(9355.62) NS(-9346.13) EW(421.48) TEMP(0.0)



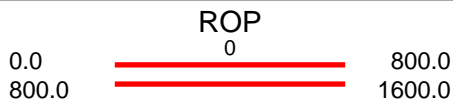
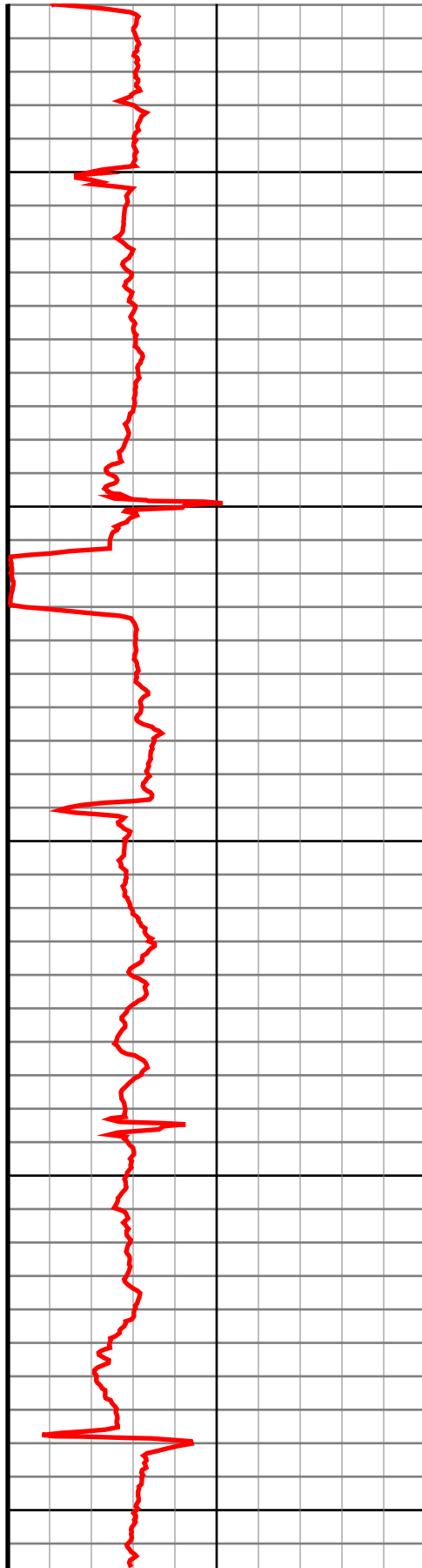
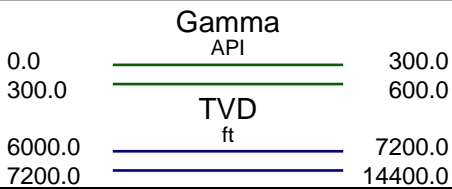
16500

16600

16700

16800

16900



#185 MD(16539.00) Inc(89.6) Azm(181.4) TVD(7032.59)
VS(9449.43) NS(-9440.11) EW(419.59) TEMP(0.0)

#186 MD(16633.00) Inc(90.2) Azm(180.9) TVD(7032.76)
VS(9543.24) NS(-9534.09) EW(417.70) TEMP(0.0)

#187 MD(16727.00) Inc(90.2) Azm(179.9) TVD(7032.43)
VS(9637.12) NS(-9628.09) EW(417.05) TEMP(0.0)

#188 MD(16821.00) Inc(90.6) Azm(179.7) TVD(7031.77)
VS(9731.04) NS(-9722.09) EW(417.38) TEMP(0.0)

#189 MD(16862.00) Inc(90.5) Azm(179.7) TVD(7031.38)
VS(9772.00) NS(-9763.08) EW(417.59) TEMP(0.0)