



COLORADO

Oil & Gas Conservation
Commission

Department of Natural Resources

1120 Lincoln Street, Suite 801
Denver, CO 80203

DOC # 1772952

MEMORANDUM

August 15, 2015

TO: Robert P. (Bob) Koehler, PhD.
Oil and Gas Conservation Commission

FROM: Chris Eisinger
Colorado Oil & Gas Conservation Commission

SUBJECT: Seismic Evaluation, Wildhorse 16-13L,, API # 123-37374

The location for the proposed injection well was reviewed using public maps and data; no site-specific subsurface data was evaluated.

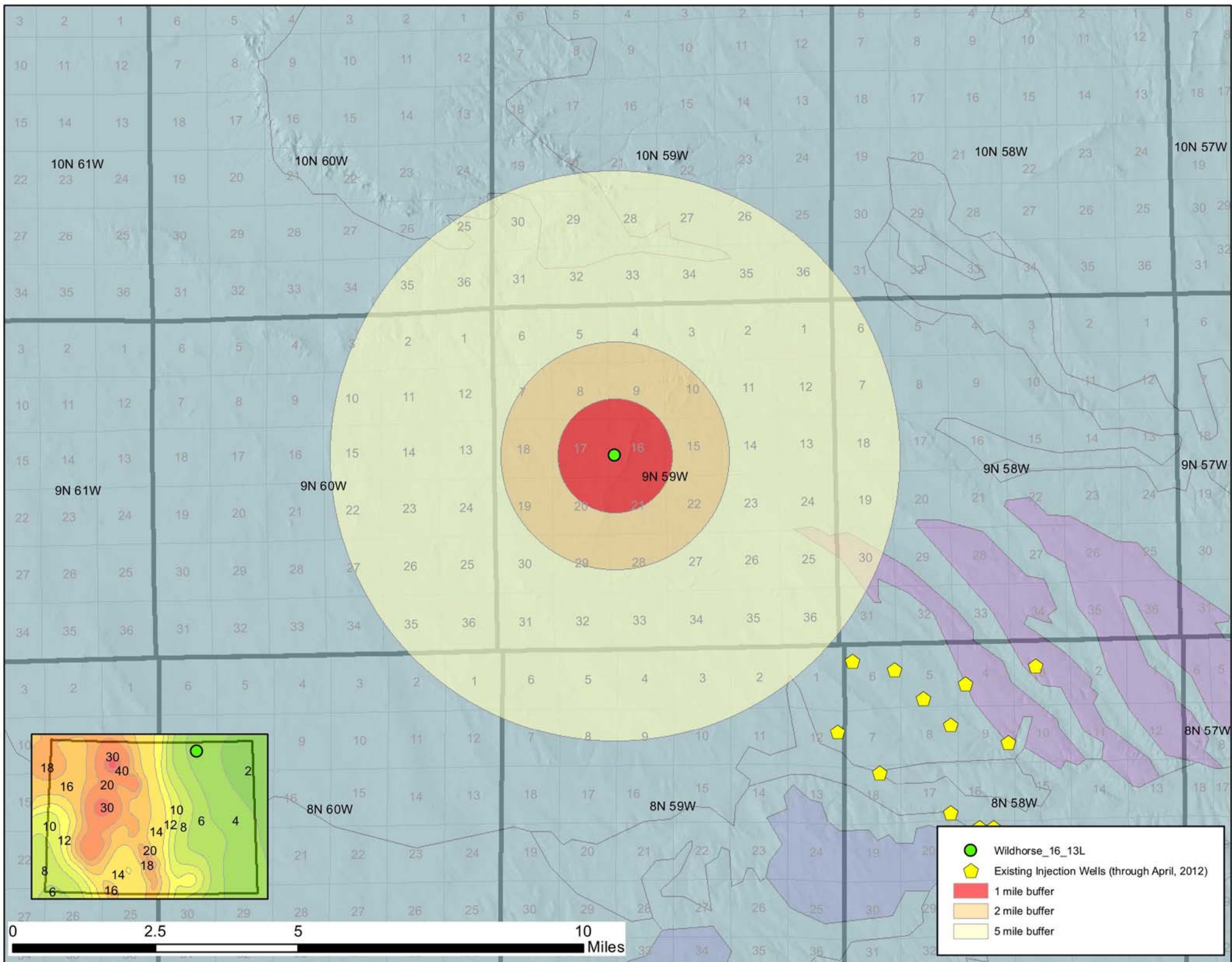
The proposed formations of injection include the Entrada and Lyons Formations. The bottom hole for this well has a TVD of 10,053' in the Precambrian, although the deepest interval of proposed injection will be at a depth of 8,184'. A vertical separation of more than 1,700' will exist between the deepest injection interval and the crystalline basement.

The USGS National Earthquake Hazard Map shows areas susceptible to ground shaking during fifty year intervals. This part of Colorado is an area that has been designated as being susceptible to a lower PGA (<0.06 g) than most parts of the state.

There are no active injection wells located within 5 miles of this proposed injection site.

No earthquakes or mapped faults are within ten miles of the proposed well according to published geologic maps. The likelihood of triggering earthquakes at this location associated with the proposed injection intervals appears low. If any seismic activity is detected subsequent to the initiation of injection, a local seismometer would help determine whether activity is related to the injection, and allow for possible management of injection volumes and rates.





- Wildhorse_16_13L
- ⬠ Existing Injection Wells (through April, 2012)
- 1 mile buffer
- 2 mile buffer
- 5 mile buffer

0 2.5 5 10 Miles