

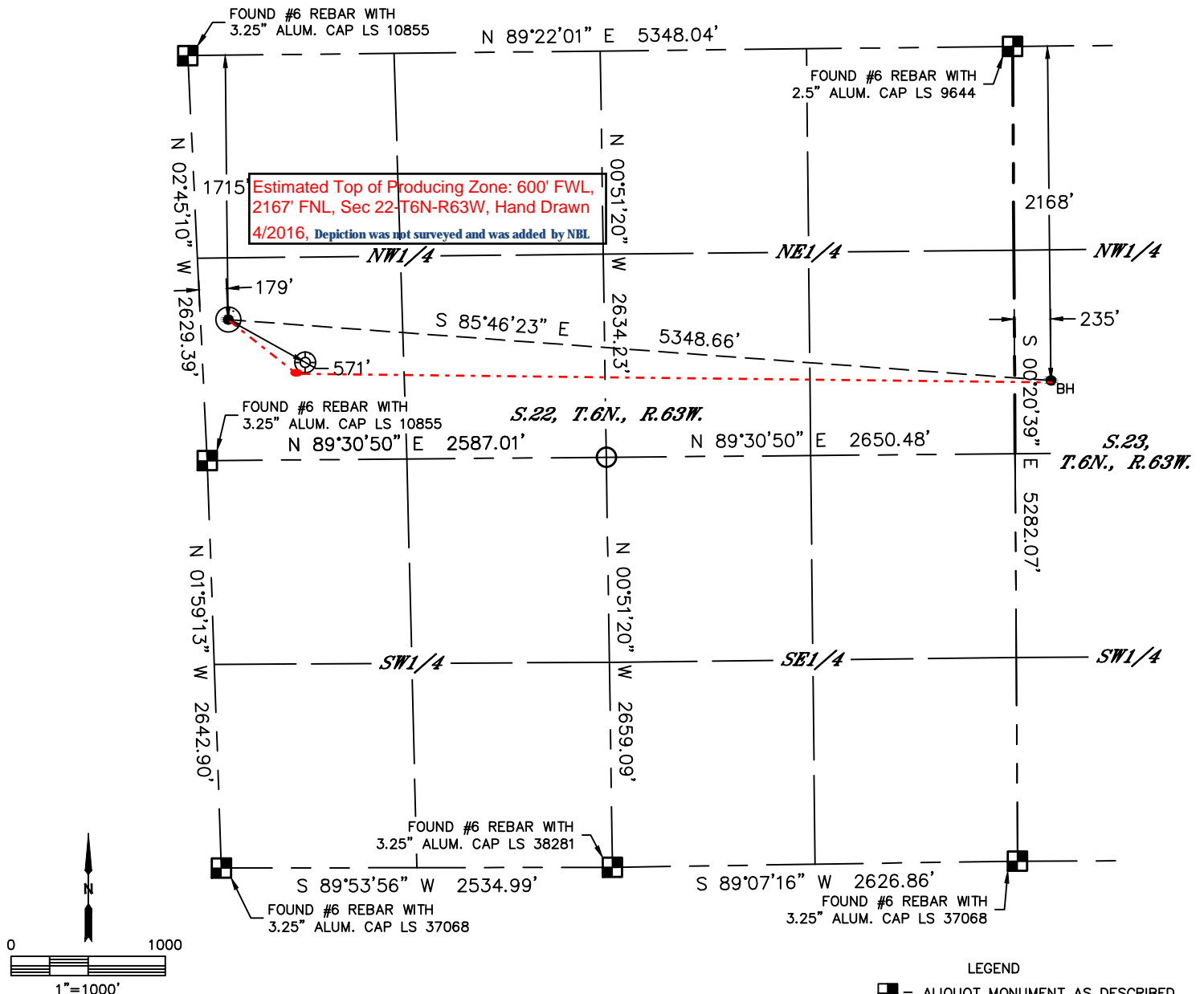


Lat40°, Inc. 6250 W. 10th Street, Unit 2, Greeley, CO 970-515-5294

# WELL LOCATION CERTIFICATE

WELLS RANCH AA22-657

SECTION: 22  
TOWNSHIP: 6N  
RANGE: 63W  
6TH. P.M.  
WELD COUNTY, CO



| CLIENT: NOBLE ENERGY INC.          |          |            |          | LANDMAN: GREG WILSON  |             |                        |  |
|------------------------------------|----------|------------|----------|-----------------------|-------------|------------------------|--|
| INSTRUMENT OPERATOR: ADAM BEAUPREZ |          |            |          | SURVEY DATE: 11/25/14 |             | SURFACE USE: RANGELAND |  |
| SHL FOOTAGE                        | SHL LAT° | SHL LONG°  | SHL PDOP | SHL ELEV              | SHL 1/4/1/4 | SHL S-T-R              |  |
| 1715 FNL 179 FWL                   | 40.47463 | -104.43185 | 1.9      | 4737                  | SWNW        | 22-6-63                |  |

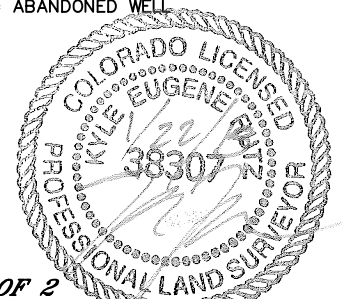
| BHL FOOTAGE      | BHL LAT° | BHL LONG°  | BHL S-T-R |
|------------------|----------|------------|-----------|
| 2168 FNL 235 FWL | 40.47337 | -104.41270 | 23-6-63   |

| NEAREST CULTURAL ITEMS           |          |
|----------------------------------|----------|
| EX. (WELLS RANCH PC AA22-05)     | ±571'SE  |
| BUILDING                         | ±1372'N  |
| BUILDING UNIT                    | ±2118'NE |
| HIGH OCCUPANCY BUILDING UNIT     | 5280'+   |
| DESIGNATED OUTSIDE ACTIVITY AREA | 5280'+   |
| PUBLIC ROAD (COUNTY ROAD 68)     | ±1703'N  |
| ABOVE GROUND UTILITY             | ±1692'N  |
| RAILROAD                         | 5280'+   |
| PROPERTY LINE                    | ±179'W   |

NOTE:

- 1) Bearings shown are Grid Bearings of the Colorado State Plane Coordinate System, North Zone, North American Datum 1983. The lineal dimensions as contained herein are based upon the "U.S. Survey Foot."
- 2) Distances to section lines measured at 90 degrees from said section lines.
- 3) Ground elevations are based on an observed GPS elevation (NAVD 1988 DATUM).
- 4) Latitude and Longitude shown are (NAD 83 DATUM).
- 5) IMPROVEMENTS: See LOCATION DRAWING for all visible improvements within 500' of disturbed area.
- 6) This map does not represent a boundary survey.

- LEGEND
- = ALIQUOT MONUMENT AS DESCRIBED
  - = CALCULATED POSITION
  - = SURFACE HOLE LOCATION (SHL)
  - ▲ = ENTRY POINT LOCATION (EP)
  - BH = BOTTOM HOLE LOCATION (BHL)
  - ⊕ = EXISTING WELL
  - ⊗ = ABANDONED WELL



SHEET 1 OF 2

Kyle E. Rutz—On behalf of Lat40°, Inc.  
Colorado Licensed Professional Land Surveyor No. 38307  
DATE: 1/22/2015  
PROJECT#: 2014014

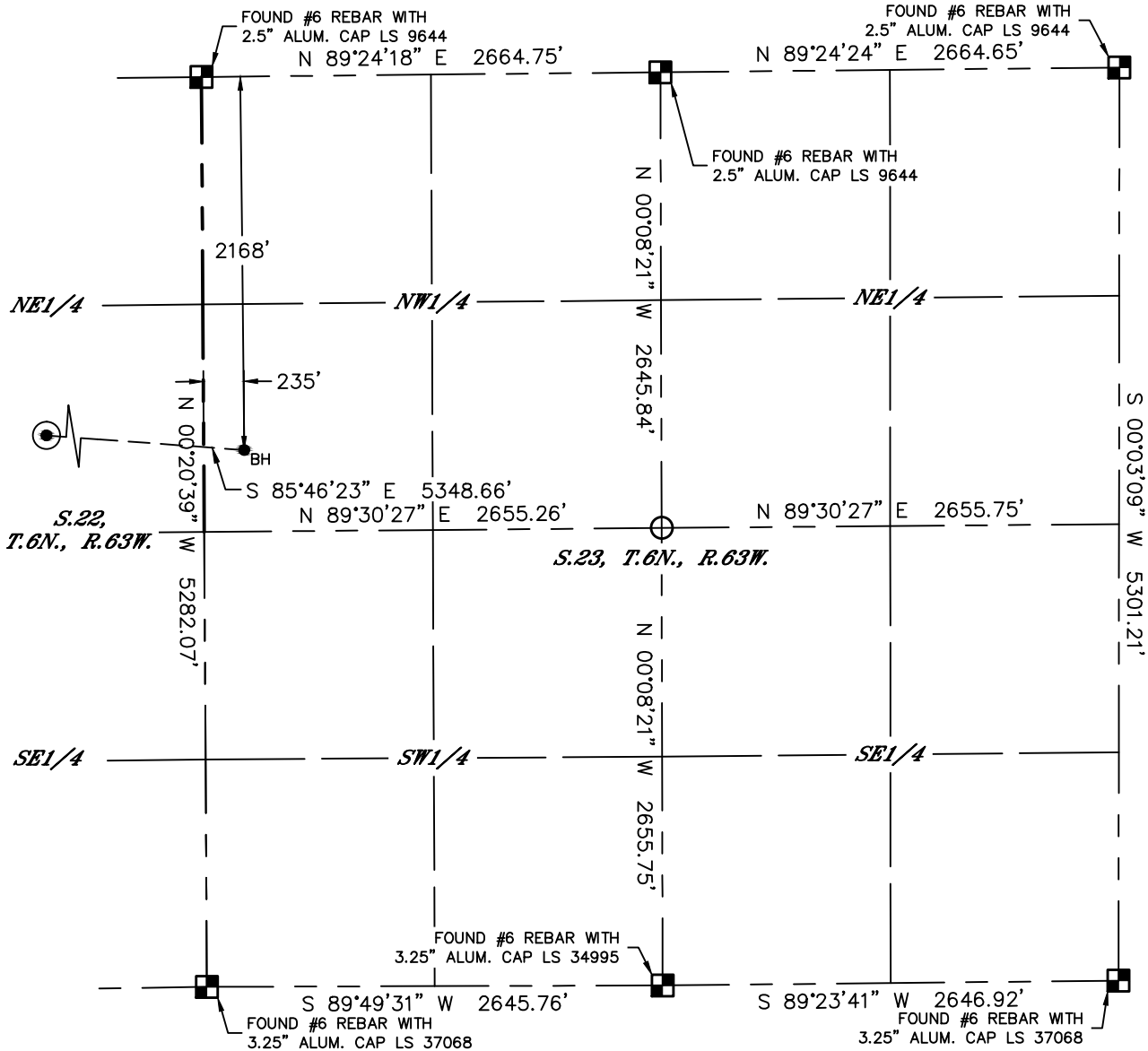


Lat40°, Inc. 6250 W. 10th Street, Unit 2, Greeley, CO 970-515-5294

# WELL LOCATION CERTIFICATE

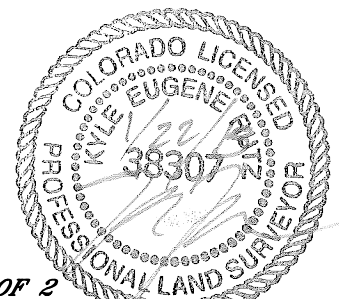
WELLS RANCH AA22-657

SECTION: 22  
TOWNSHIP: 6N  
RANGE: 63W  
6TH. P.M.  
WELD COUNTY, CO



## LEGEND

- = ALIQUOT MONUMENT AS DESCRIBED
- = CALCULATED POSITION
- ⊙ = SURFACE HOLE LOCATION (SHL)
- ▲ = ENTRY POINT LOCATION (EP)
- = BOTTOM HOLE LOCATION (BHL)
- ⊕ = EXISTING WELL
- ⊖ = ABANDONED WELL



**SHEET 2 OF 2**

Kyle E. Rutz—On behalf of Lat40°, Inc.  
Colorado Licensed Professional Land Surveyor No. 38307  
DATE: 1/22/2015  
PROJECT#: 2014014