

HALLIBURTON

iCem[®] Service

EXTRACTION OIL & GAS

For: HUGH MCGRAW

Date: Tuesday, March 01, 2016

Bybee #5

Surface

Job Date: Sunday, February 21, 2016

Sincerely,

Derek Trier

Legal Notice

Warning Disclaimer

Although the information contained in this report is based on sound engineering practices, the copyright owner(s) does (do) not accept any responsibility whatsoever, in negligence or otherwise, for any loss or damage arising from the possession or use of the report whether in terms of correctness or otherwise. The application, therefore, by the user of this report or any part thereof, is solely at the user's own risk.

Limitations of Liability

Except as expressly set forth herein, there are no representations or warranties by Halliburton, express or implied, including implied warranties of merchantability and/or fitness for a particular purpose. In no event will Halliburton or its suppliers be liable for consequential, incidental, special, punitive or exemplary damages (including, without limitation, loss of data, profits, use of hardware, or software). Customer accepts full responsibility for any investment made based on results from the Software. Any interpretations, analyses or modeling of any data, including, but not limited to Customer data, and any recommendation or decisions based upon such interpretations, analyses or modeling are opinions based upon inferences from measurements and empirical relationships and assumptions, which inferences and assumptions are not infallible, and with respect to which professional may differ. Accordingly, Halliburton cannot and does not warrant the accuracy, correctness or completeness of any such interpretation, recommendation, modeling or other products of the Software Product. As such, any interpretation, recommendation or modeling resulting from the Software for the purpose of any drilling, well treatment, production or financial decision will be at the sole risk of Customer. Under no circumstances will Halliburton or its suppliers be liable for any damages.

Table of Contents

1.0 Cementing Job Summary 4

 1.1 Executive Summary4

2.0 Real-Time Job Summary 7

 2.1 Job Event Log7

 2.2 Job Chart.....9

1.0 Cementing Job Summary

1.1 Executive Summary

Halliburton appreciates the opportunity to perform the cementing services on the **Bybee #5** cement **Surface** casing job. A pre-job safety meeting was held before the job where details of the job were discussed, potential safety hazards were reviewed, and environmental compliance procedures were outlined.

Halliburton maintains a continuous quality improvement process and appreciates any comments or suggestions that you may have. Halliburton again thanks you for the opportunity to perform service work on this well. We hope to be your solutions provider for future projects.

Respectfully,

Halliburton [Ft. Lupton]

Job Times

	Date	Time	Time Zone
Called Out Time:	2/21/2016	0100	MTN
Arrived On Location At:		0430	
Job Started At:		0736	
Job Completed At:		0840	
Departed Location At:		0930	

HALLIBURTON

Cementing Job Summary

The Road to Excellence Starts with Safety

Sold To #: 369404	Ship To #: 3677760	Quote #:	Sales Order #: 0903141203							
Customer: EXTRACTION OIL & GAS -		Customer Rep: JOSE TORRES								
Well Name: BYBEE	Well #: 5	API/UWI #: 05-123-41803-00								
Field: WATTENBERG	City (SAP): FIRESTONE	County/Parish: WELD	State: COLORADO							
Legal Description: NE SE-14-2N-68W-2268FSL-1192FEL										
Contractor: PATTERSON-UTI ENERGY		Rig/Platform Name/Num: PATTERSON 346								
Job BOM: 7521										
Well Type: HORIZONTAL OIL										
Sales Person: HALAMERICA\HB71271		Srvc Supervisor: Christopher Pickell								
Job										
Formation Name										
Formation Depth (MD)	Top	Bottom								
Form Type	BHST									
Job depth MD	1615ft	Job Depth TVD	1615ft							
Water Depth		Wk Ht Above Floor	4ft							
Perforation Depth (MD)	From	To								
Well Data										
Description	New / Used	Size in	ID in	Weight lbm/ft	Thread	Grade	Top MD ft	Bottom MD ft	Top TVD ft	Bottom TVD ft
Casing		9.625	8.921	36			0	1597	0	1597
Open Hole Section			13.5				0	1615	0	1615
Tools and Accessories										
Type	Size in	Qty	Make	Depth ft		Type	Size in	Qty	Make	
Guide Shoe	9.625					Top Plug	9.625	1	KLX	
Float Shoe	9.625	1	KLX	1597		Bottom Plug	9.625			
Float Collar	9.625	1	KLX	1555		SSR plug set	9.625			
Insert Float	9.625					Plug Container	9.625	1	HES	
Stage Tool	9.625					Centralizers	9.625			
Fluid Data										
Stage/Plug #: 1										
Fluid #	Stage Type	Fluid Name	Qty	Qty UoM	Mixing Density lbm/gal	Yield ft ³ /sack	Mix Fluid Gal	Rate bbl/min	Total Mix Fluid Gal	
1	Fresh Water	Fresh Water	30	bbl	8.33			7		
Fluid Data										
Fluid #	Stage Type	Fluid Name	Qty	Qty UoM	Mixing Density lbm/gal	Yield ft ³ /sack	Mix Fluid Gal	Rate bbl/min	Total Mix Fluid Gal	
2	SwiftCem	SWIFTCM (TM) SYSTEM	550	sack	13.5	1.74	9.2	8		

HALLIBURTON

Cementing Job Summary

Fluid #	Stage Type	Fluid Name	Qty	Qty UoM	Mixing Density lbm/gal	Yield ft3/sack	Mix Fluid Gal	Rate bbl/min	Total Mix Fluid Gal
3	Fresh Water Displacement	Fresh Water Displacement	120.2	bbl	8.33			10-2.5	
Cement Left In Pipe		Amount	42 ft		Reason			Shoe Joint	
Comment All cement scaled within range. Returned all spacer and 30 bbl of cement to surface. Top of cement is 0 ft.									

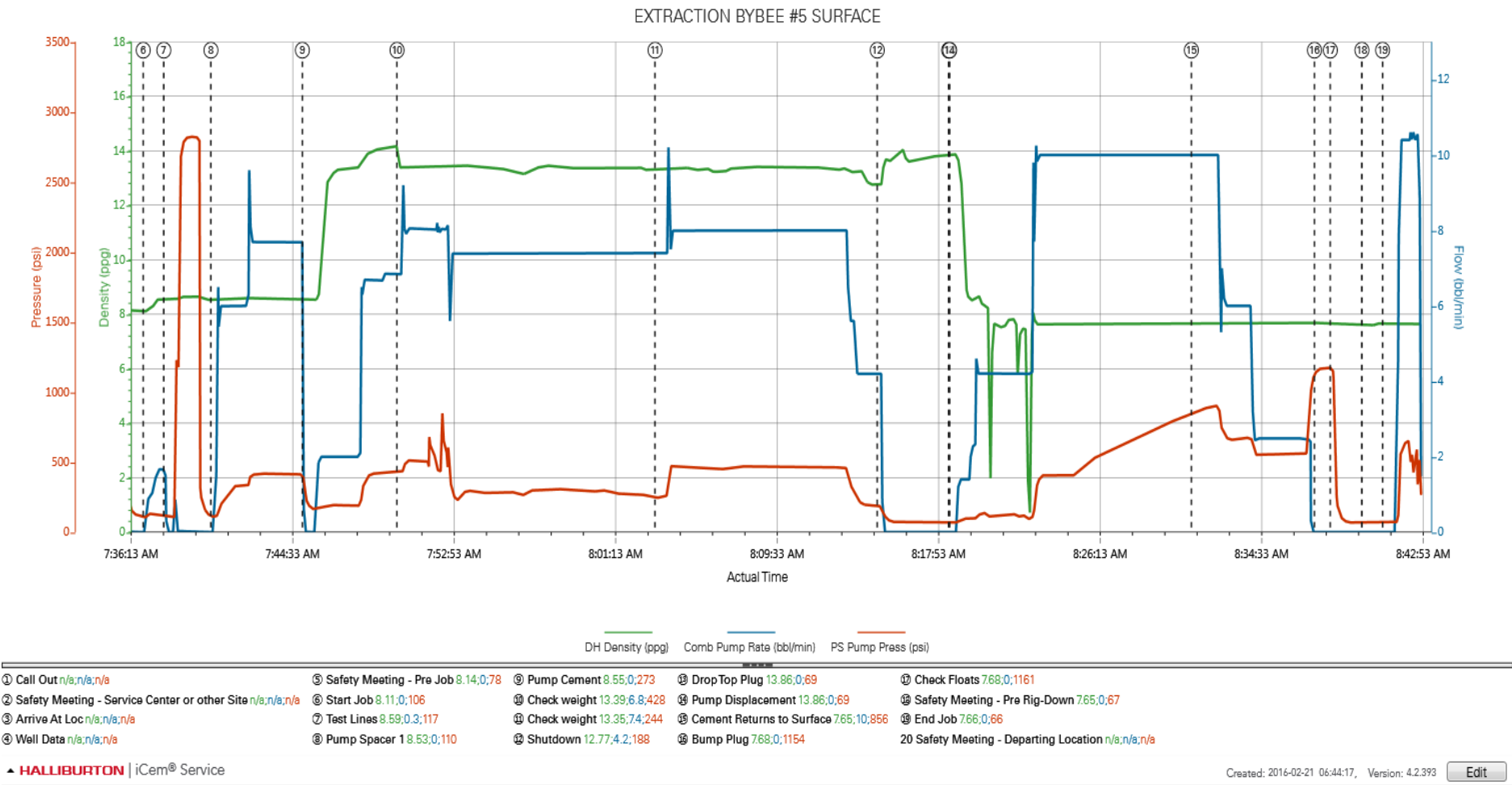
2.0 Real-Time Job Summary

2.1 Job Event Log

Type	Seq. No.	Activity	Graph Label	Date	Time	Source	Downhole Density (ppg)	Combined Pump Rate (bbl/min)	Pass-Side Pump Pressure (psi)	Comments
Event	1	Call Out	Call Out	2/21/2016	01:00:00	USER				Crew called out at 01:00 to be on location at 05:30. Cementer and pump were already on location from previous well.
Event	2	Safety Meeting - Service Center or other Site	Safety Meeting - Service Center or other Site	2/21/2016	03:30:00	USER				Bulk hand held safety meeting for journey, equipment double checked. Bulk trucks left the yard for location
Event	3	Arrive At Loc	Arrive At Loc	2/21/2016	04:30:00	USER				Bulk trucks arrived on location at 04:30. Rig was about to begin running casing
Event	4	Other	Well Data	2/21/2016	04:35:00	USER				TD 1615' 13.5" OH. TP 1597' 9 5/8" 36# CASING. SJ 42'. WBM 9.2#
Event	5	Safety Meeting - Pre Job	Safety Meeting - Pre Job	2/21/2016	07:27:36	USER				Safety meeting held to discuss job safety and procedure
Event	6	Start Job	Start Job	2/21/2016	07:36:58	COM6				
Event	7	Test Lines	Test Lines	2/21/2016	07:38:02	COM6	8.59	0.30	2500.00	Pressure test lines to 2500 psi. Check for visible leaks and pressure loss
Event	8	Pump Spacer 1	Pump Spacer 1	2/21/2016	07:40:28	COM6	8.53	8.00	110.00	Pump 30 bbl of water spacer
Event	9	Pump Cement	Pump Cement	2/21/2016	07:45:11	COM6	8.55	7.00	273.00	Pump 550 sks 170 bbl of Swiftcem cement 13.5 ppg 1.74 yield 9.2 gal/sk
Event	10	Check Weight	Check weight	2/21/2016	07:50:04	COM6	13.39	6.80	428.00	Cement scaled at 13.6 ppg
Event	11	Check Weight	Check weight	2/21/2016	08:03:23	COM6	13.35	7.40	244.00	Cement scaled at 13.6 ppg
Event	12	Shutdown	Shutdown	2/21/2016	08:14:51	USER	12.77	4.20	188.00	
Event	13	Drop Top Plug	Drop Top Plug	2/21/2016	08:18:32	COM6				Plug dropped while shutdown
Event	14	Pump Displacement	Pump Displacement	2/21/2016	08:18:35	COM6	13.86	0.00	500.00	Pump displacement using water. Pumps and lines washed on top of the plug

Event	15	Cement Returns to Surface	Cement Returns to Surface	2/21/2016	08:31:03	USER	7.65	10.00	856.00	Cement to surface with 90 bbl away
Event	16	Bump Plug	Bump Plug	2/21/2016	08:37:24	COM6	7.68	0.00	1154.00	Plug landed at calculated 120 bbl with 600 psi shutting down with 1150 psi
Event	17	Check Floats	Check Floats	2/21/2016	08:38:13	USER	7.68	0.00	1161.00	Pressure was held for 1 minute then released. Floats held. 1 bbl back to truck
Event	18	Safety Meeting - Pre Rig-Down	Safety Meeting - Pre Rig-Down	2/21/2016	08:39:51	USER				Safety meeting held for rig down. Washed truck up to wash up tank. Rigged down equipment up to the next well
Event	19	End Job	End Job	2/21/2016	08:40:55	COM6				All spacer and 30 bbl of cement to surface
Event	20	Safety Meeting - Departing Location	Safety Meeting - Departing Location	2/21/2016	09:30:00	USER				Safety meeting held for journey. Left location for the yard

2.2 Job Chart



EXTRACTION BYBEE #5 SURFACE

