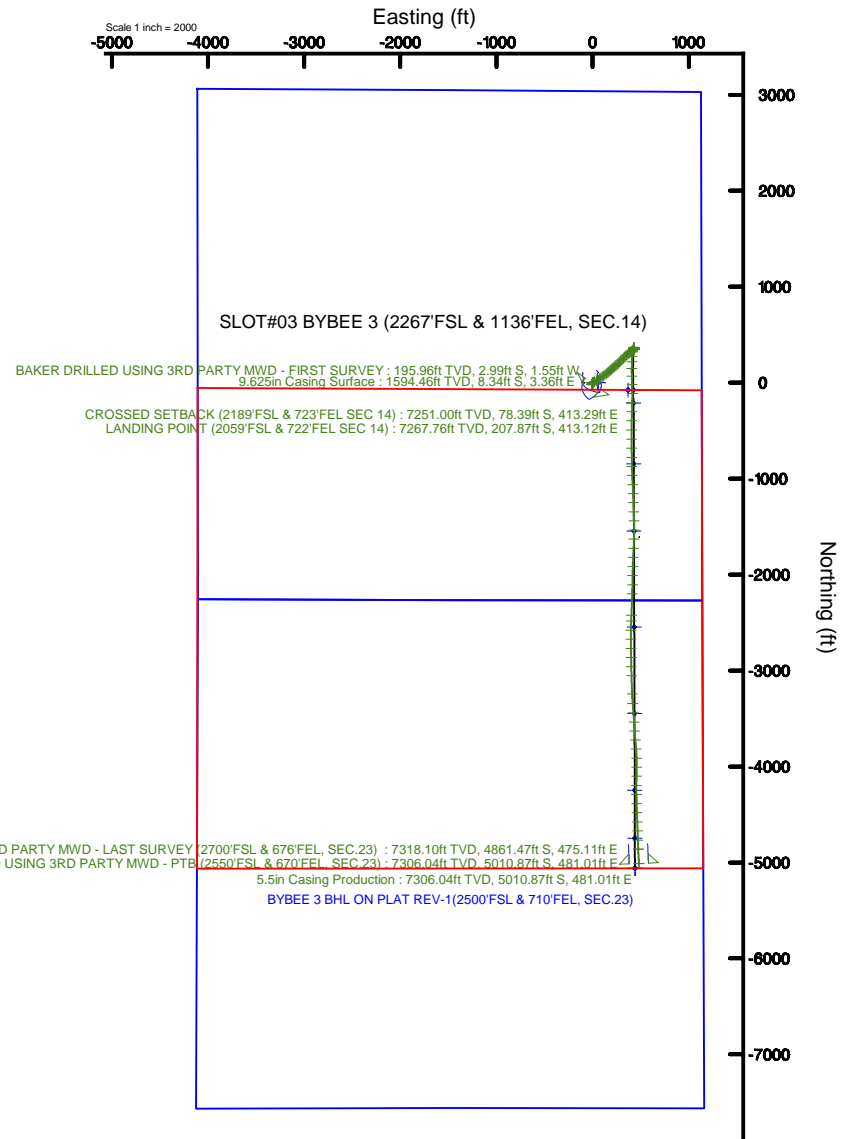
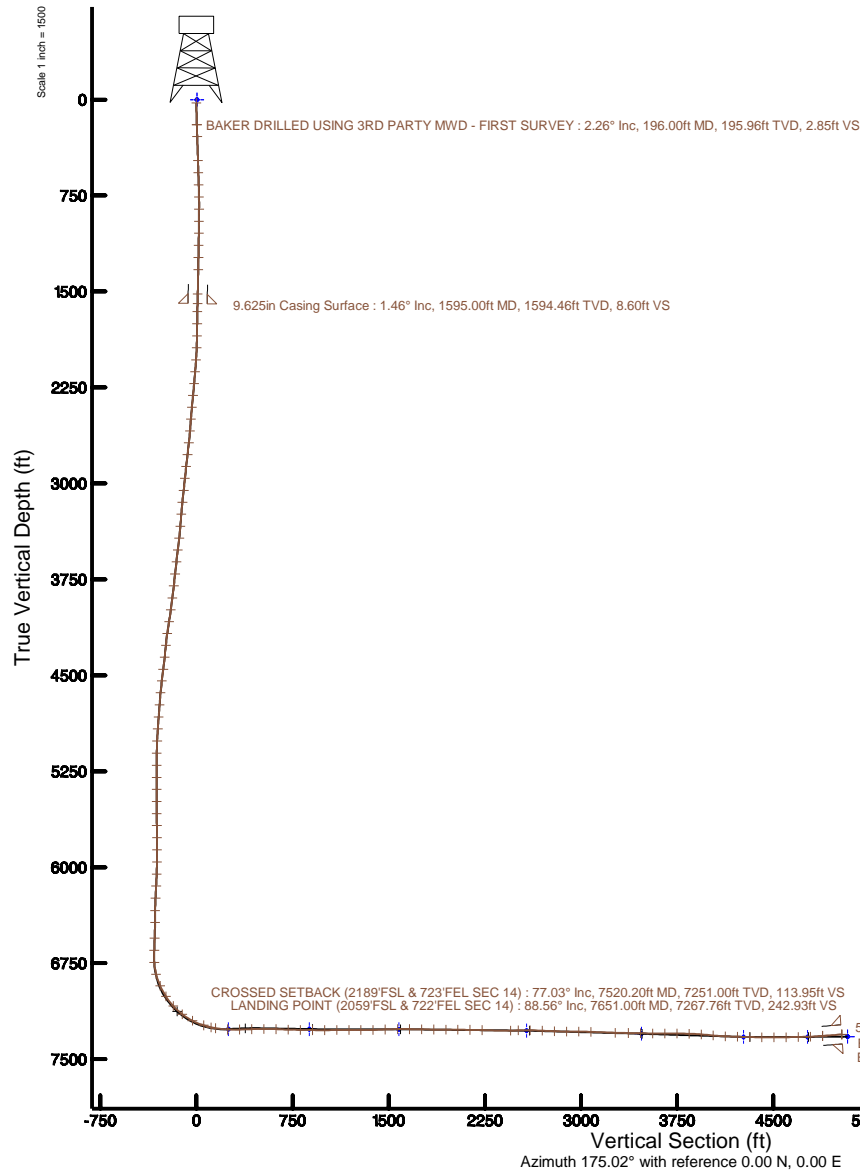


EXTRACTION OIL & GAS

Location: COLORADO Slot: SLOT#03 BYBEE 3 (2267'FSL & 1136'FEL, SEC.14)
Field: WELD COUNTY (NAD83/TRUE NORTH) Well: BYBEE 3
Facility: SEC.14-T02N-R68W Wellbore: BYBEE 3 PWB

Plot reference wellpath is BYBEE 3 PWP (REV-C.0)	Grid System: NAD83 / Lambert Colorado SP, Northern Zone (501), US feet
True vertical depths are referenced to PATTERSON 346 (25'KB) (RKB)	* = Wellpath was transformed from a different geodetic datum
Measured depths are referenced to PATTERSON 346 (25'KB) (RKB)	North Reference: True north
PATTERSON 346 (25'KB) to Mean Sea Level: 4914 feet	Scale: True distance
Mean Sea Level to Ground level (At Slot: SLOT#03 BYBEE 3 (2267'FSL & 1136'FEL, SEC.14)): 0 feet	Depths are in feet
Coordinates are in feet referenced to Slot	Created by: wagnjam on 2016-03-09
	Database: WA_DEN_Denver_Defn





Actual Wellpath Report

BYBEE 3 AWP

Page 1 of 9



REFERENCE WELLPATH IDENTIFICATION

Operator	EXTRACTION OIL & GAS	Slot	SLOT#03 BYBEE 3 (2267'FSL & 1136'FEL, SEC.14)
Area	COLORADO	Well	BYBEE 3
Field	WELD COUNTY (NAD83/TRUE NORTH)	Wellbore	BYBEE 3 AWB
Facility	SEC.14-T02N-R68W		

REPORT SETUP INFORMATION

Projection System	NAD83 / Lambert Colorado SP, Northern Zone (501), US feet	Software System	WellArchitect® 5.0
North Reference	True	User	Wagnjam
Scale	0.999959	Report Generated	3/9/2016 at 11:16:12 AM
Convergence at slot	0.35° East	Database/Source file	WA_DEN_Denver_Defn/BYBEE_3_AWP.xml

WELLPATH LOCATION

	Local coordinates		Grid coordinates		Geographic coordinates	
	North[ft]	East[ft]	Easting[US ft]	Northing[US ft]	Latitude	Longitude
Slot Location	0.00	-56.23	3149558.29	1293444.66	40°08'15.580"N	104°57'54.263"W
Facility Reference Pt			3149614.52	1293445.00	40°08'15.580"N	104°57'53.539"W
Field Reference Pt			3185481.27	1419166.81	40°28'55.560"N	104°49'59.556"W

WELLPATH DATUM

Calculation method	Minimum curvature	PATTERSON 346 (25'KB) (RKB) to Facility Vertical Datum	4914.00ft
Horizontal Reference Pt	Slot	PATTERSON 346 (25'KB) (RKB) to Mean Sea Level	4914.00ft
Vertical Reference Pt	PATTERSON 346 (25'KB) (RKB)	PATTERSON 346 (25'KB) (RKB) to Ground Level at Slot (SLOT#03 BYBEE 3 (2267'FSL & 1136'FEL, SEC.14))	4914.00ft
MD Reference Pt	PATTERSON 346 (25'KB) (RKB)	Section Origin	N 0.00, E 0.00 ft
Field Vertical Reference	Mean Sea Level	Section Azimuth	175.02°

REFERENCE WELLPATH IDENTIFICATION

Operator	EXTRACTION OIL & GAS	Slot	SLOT#03 BYBEE 3 (2267'FSL & 1136'FEL, SEC.14)
Area	COLORADO	Well	BYBEE 3
Field	WELD COUNTY (NAD83/TRUE NORTH)	Wellbore	BYBEE 3 AWB
Facility	SEC.14-T02N-R68W		

WELLPATH DATA (128 stations) † = interpolated/extrapolated station

MD [ft]	Inclination [°]	Azimuth [°]	TVD [ft]	Vert Sect [ft]	North [ft]	East [ft]	DLS [°/100ft]	Comments
0.00†	0.000	207.410	0.00	0.00	0.00	0.00	0.00	
25.00	0.000	207.410	25.00	0.00	0.00	0.00	0.00	
196.00	2.260	207.410	195.96	2.85	-2.99	-1.55	1.32	BAKER DRILLED USING 3RD PARTY MWD - FIRST SURVEY
288.00	2.140	201.840	287.89	5.91	-6.20	-3.03	0.27	
477.00	1.720	192.090	476.78	11.77	-12.25	-4.93	0.28	
572.00	1.910	192.760	571.73	14.64	-15.19	-5.58	0.20	
666.00	2.060	196.630	665.68	17.71	-18.33	-6.41	0.21	
761.00	0.970	167.460	760.64	20.09	-20.75	-6.73	1.37	
856.00	1.170	63.510	855.63	20.53	-21.11	-5.68	1.78	
951.00	1.090	45.780	950.62	19.61	-20.04	-4.17	0.38	
1045.00	1.090	41.990	1044.60	18.43	-18.75	-2.93	0.08	
1140.00	1.080	30.760	1139.58	17.09	-17.31	-1.87	0.22	
1235.00	1.130	29.890	1234.56	15.59	-15.73	-0.94	0.06	
1329.00	1.240	27.250	1328.54	13.97	-14.02	-0.01	0.13	
1519.00	1.550	31.510	1518.49	10.17	-10.01	2.27	0.17	
1658.00	1.390	38.100	1657.44	7.42	-7.08	4.29	0.17	
1752.00	1.180	21.960	1751.42	5.73	-5.28	5.36	0.44	
1847.00	1.070	359.670	1846.40	3.97	-3.49	5.72	0.47	
1941.00	2.220	26.920	1940.36	1.55	-0.99	6.54	1.45	
2035.00	5.180	43.530	2034.16	-2.81	3.71	10.29	3.32	
2130.00	11.120	57.690	2128.16	-9.86	11.73	20.99	6.55	
2224.00	13.250	62.510	2220.04	-18.15	21.55	38.21	2.51	
2318.00	12.210	58.240	2311.73	-26.76	31.75	56.22	1.49	
2412.00	10.910	56.610	2403.82	-35.47	41.88	72.10	1.43	
2507.00	9.330	57.060	2497.34	-43.36	51.02	86.07	1.67	
2601.00	8.260	53.520	2590.24	-50.46	59.17	97.90	1.28	
2695.00	13.190	56.560	2682.57	-59.10	69.10	112.28	5.28	
2790.00	12.530	53.950	2775.19	-69.59	81.14	129.66	0.93	
2885.00	10.960	50.830	2868.19	-79.98	92.91	145.00	1.78	
2979.00	9.810	48.150	2960.65	-89.81	103.90	157.89	1.33	

REFERENCE WELLPATH IDENTIFICATION

Operator	EXTRACTION OIL & GAS	Slot	SLOT#03 BYBEE 3 (2267'FSL & 1136'FEL, SEC.14)
Area	COLORADO	Well	BYBEE 3
Field	WELD COUNTY (NAD83/TRUE NORTH)	Wellbore	BYBEE 3 AWP
Facility	SEC.14-T02N-R68W		

WELLPATH DATA (128 stations)

MD [ft]	Inclination [°]	Azimuth [°]	TVD [ft]	Vert Sect [ft]	North [ft]	East [ft]	DLS [°/100ft]	Comments
3074.00	9.410	46.520	3054.32	-99.50	114.64	169.55	0.51	
3169.00	10.570	50.440	3147.88	-109.28	125.54	181.91	1.41	
3263.00	8.220	48.330	3240.61	-118.19	135.50	193.57	2.53	
3357.00	6.290	44.880	3333.86	-125.53	143.61	202.23	2.10	
3452.00	11.460	48.320	3427.69	-134.53	153.58	212.96	5.47	
3547.00	12.270	52.730	3520.66	-145.56	165.97	228.04	1.28	
3642.00	10.460	47.530	3613.79	-156.21	177.91	242.43	2.19	
3737.00	10.640	49.060	3707.19	-166.61	189.48	255.42	0.35	
3832.00	9.690	48.330	3800.70	-176.53	200.54	268.02	1.01	
3928.00	11.660	43.670	3895.03	-187.77	212.93	280.75	2.24	
4023.00	11.340	43.510	3988.13	-200.30	226.65	293.81	0.34	
4117.00	14.000	45.130	4079.83	-213.72	241.38	308.24	2.85	
4212.00	12.420	46.440	4172.31	-227.47	256.52	323.78	1.69	
4306.00	9.220	46.320	4264.63	-238.48	268.69	336.56	3.40	
4401.00	8.940	43.600	4358.44	-248.13	279.30	347.15	0.54	
4496.00	11.850	48.750	4451.87	-258.78	291.08	359.58	3.21	
4590.00	12.740	53.430	4543.72	-269.92	303.62	375.16	1.42	
4685.00	10.230	54.260	4636.81	-279.73	314.79	390.42	2.65	
4781.00	7.990	52.080	4731.59	-287.72	323.87	402.61	2.36	
4876.00	6.520	47.670	4825.83	-294.58	331.56	411.80	1.65	
4970.00	6.000	39.620	4919.27	-301.32	338.94	418.88	1.08	
5065.00	4.100	50.310	5013.90	-306.79	344.93	424.66	2.22	
5159.00	3.320	65.170	5107.70	-309.62	348.22	429.72	1.31	
5254.00	1.670	78.130	5202.61	-310.72	349.66	433.57	1.82	
5349.00	0.520	204.530	5297.60	-310.52	349.55	434.75	2.13	
5443.00	0.540	268.470	5391.59	-310.17	349.15	434.13	0.60	
5537.00	0.520	265.440	5485.59	-310.20	349.11	433.26	0.04	
5632.00	0.590	227.390	5580.59	-309.91	348.74	432.47	0.39	
5726.00	1.350	220.780	5674.57	-308.84	347.57	431.39	0.82	
5821.00	0.830	187.150	5769.56	-307.38	346.04	430.57	0.85	

REFERENCE WELLPATH IDENTIFICATION

Operator	EXTRACTION OIL & GAS	Slot	SLOT#03 BYBEE 3 (2267'FSL & 1136'FEL, SEC.14)
Area	COLORADO	Well	BYBEE 3
Field	WELD COUNTY (NAD83/TRUE NORTH)	Wellbore	BYBEE 3 AWB
Facility	SEC.14-T02N-R68W		

WELLPATH DATA (128 stations) † = interpolated/extrapolated station

MD [ft]	Inclination [°]	Azimuth [°]	TVD [ft]	Vert Sect [ft]	North [ft]	East [ft]	DLS [°/100ft]	Comments
5915.00	0.890	74.500	5863.55	-306.85	345.56	431.19	1.52	
6009.00	1.350	25.870	5957.53	-307.94	346.76	432.38	1.08	
6104.00	1.750	4.140	6052.50	-310.33	349.21	432.97	0.74	
6199.00	2.920	349.910	6147.42	-314.17	353.04	432.65	1.37	
6294.00	3.030	359.180	6242.29	-319.09	357.93	432.19	0.52	
6390.00	0.480	55.630	6338.24	-321.81	360.70	432.49	2.91	
6484.00	1.150	356.410	6432.23	-322.95	361.86	432.75	1.06	
6605.00	1.850	345.500	6553.19	-326.09	364.96	432.19	0.62	
6700.00	1.660	338.530	6648.15	-328.92	367.73	431.30	0.30	
6795.00	2.810	221.500	6743.11	-328.64	367.26	429.25	4.06	
6889.00	15.890	192.400	6835.68	-314.71	352.90	424.94	14.36	
6985.00	24.630	189.970	6925.66	-282.77	320.30	418.65	9.14	
7080.00	33.020	184.700	7008.83	-238.04	274.92	413.09	9.22	
7175.00	42.450	183.250	7083.87	-180.67	216.98	409.14	9.97	
7270.00	51.790	180.590	7148.45	-111.63	147.49	406.93	10.04	
7365.00	63.370	177.950	7199.30	-31.80	67.45	408.07	12.41	
7460.00	72.320	177.660	7235.09	56.00	-20.38	411.45	9.43	
7520.20†	77.033	178.692	7251.00	113.95	-78.39	413.29	8.00	CROSSED SETBACK (2189'FSL & 723'FEL SEC 14)
7555.00	79.760	179.270	7258.00	147.96	-112.47	413.89	8.00	
7651.00	88.560	181.640	7267.76	242.93	-207.87	413.12	9.49	LANDING POINT (2059'FSL & 722'FEL SEC 14)
7746.00	90.840	182.260	7268.25	337.23	-302.81	409.89	2.49	
7841.00	92.380	182.000	7265.58	431.46	-397.70	406.36	1.64	
7936.00	90.270	180.560	7263.39	525.86	-492.64	404.24	2.69	
8032.00	87.570	178.870	7265.20	621.51	-588.61	404.71	3.32	
8127.00	88.260	179.140	7268.65	716.21	-683.53	406.36	0.78	
8222.00	88.790	179.170	7271.10	810.93	-778.49	407.76	0.56	
8316.00	89.230	178.570	7272.72	904.71	-872.46	409.62	0.79	
8411.00	90.130	178.090	7273.25	999.55	-967.42	412.38	1.07	
8506.00	91.040	176.790	7272.28	1094.45	-1062.31	416.63	1.67	
8601.00	89.800	177.460	7271.59	1189.38	-1157.19	421.39	1.48	

REFERENCE WELLPATH IDENTIFICATION

Operator	EXTRACTION OIL & GAS	Slot	SLOT#03 BYBEE 3 (2267'FSL & 1136'FEL, SEC.14)
Area	COLORADO	Well	BYBEE 3
Field	WELD COUNTY (NAD83/TRUE NORTH)	Wellbore	BYBEE 3 AWB
Facility	SEC.14-T02N-R68W		

WELLPATH DATA (128 stations)

MD [ft]	Inclination [°]	Azimuth [°]	TVD [ft]	Vert Sect [ft]	North [ft]	East [ft]	DLS [°/100ft]	Comments
8695.00	89.830	178.220	7271.89	1283.27	-1251.12	424.93	0.81	
8790.00	91.310	177.660	7270.95	1378.14	-1346.05	428.35	1.67	
8885.00	92.550	178.700	7267.75	1472.94	-1440.95	431.36	1.70	
8981.00	90.500	180.370	7265.19	1568.60	-1536.90	432.14	2.75	
9075.00	89.290	182.000	7265.36	1662.05	-1630.88	430.20	2.16	
9171.00	88.730	182.060	7267.02	1757.32	-1726.80	426.80	0.59	
9265.00	90.130	183.160	7267.96	1850.49	-1820.70	422.52	1.89	
9361.00	89.460	181.990	7268.30	1945.65	-1916.60	418.21	1.40	
9455.00	88.960	180.070	7269.60	2039.12	-2010.57	416.52	2.11	
9550.00	89.660	181.620	7270.74	2133.62	-2105.55	415.11	1.79	
9645.00	87.760	181.910	7272.88	2227.94	-2200.47	412.19	2.02	
9870.00	90.640	182.230	7276.02	2451.19	-2425.28	404.06	1.29	
9930.00	91.340	182.510	7274.98	2510.69	-2485.22	401.58	1.26	
10024.00	89.190	180.410	7274.55	2604.08	-2579.18	399.19	3.20	
10119.00	87.460	179.820	7277.33	2698.67	-2674.13	399.00	1.92	
10214.00	87.820	179.650	7281.24	2793.26	-2769.05	399.44	0.42	
10309.00	88.760	178.760	7284.07	2887.97	-2864.00	400.75	1.36	
10405.00	90.340	178.760	7284.83	2983.76	-2959.97	402.83	1.65	
10500.00	87.750	178.740	7286.41	3078.53	-3054.92	404.90	2.73	
10690.00	88.080	177.380	7293.32	3268.14	-3244.68	411.33	0.74	
10791.00	89.360	175.900	7295.58	3369.07	-3345.48	417.25	1.94	
10886.00	88.890	175.490	7297.03	3464.05	-3440.20	424.38	0.66	
10982.00	89.460	175.640	7298.41	3560.03	-3535.90	431.80	0.61	
11077.00	89.930	176.120	7298.92	3655.02	-3630.66	438.63	0.71	
11171.00	89.530	175.380	7299.36	3749.01	-3724.40	445.59	0.89	
11266.00	88.250	175.460	7301.20	3843.99	-3819.07	453.18	1.35	
11361.00	85.260	177.900	7306.58	3938.78	-3913.74	458.67	4.06	
11455.00	84.760	181.210	7314.76	4032.12	-4007.37	459.40	3.55	
11550.00	87.650	180.950	7321.04	4126.37	-4102.14	457.62	3.05	
11645.00	88.220	180.320	7324.47	4220.85	-4197.07	456.56	0.89	

REFERENCE WELLPATH IDENTIFICATION

Operator	EXTRACTION OIL & GAS	Slot	SLOT#03 BYBEE 3 (2267'FSL & 1136'FEL, SEC.14)
Area	COLORADO	Well	BYBEE 3
Field	WELD COUNTY (NAD83/TRUE NORTH)	Wellbore	BYBEE 3 AWB
Facility	SEC.14-T02N-R68W		

WELLPATH DATA (128 stations)

MD [ft]	Inclination [°]	Azimuth [°]	TVD [ft]	Vert Sect [ft]	North [ft]	East [ft]	DLS [°/100ft]	Comments
11740.00	88.620	179.130	7327.09	4315.49	4292.03	457.02	1.32	
11835.00	89.160	178.540	7328.93	4410.27	4386.99	458.95	0.84	
11930.00	90.070	178.190	7329.57	4505.10	4481.95	461.66	1.03	
12025.00	91.110	177.990	7328.59	4599.96	4576.89	464.83	1.11	
12121.00	91.450	178.170	7326.44	4695.80	4672.81	468.04	0.40	
12216.00	92.040	177.750	7323.55	4790.63	4767.71	471.42	0.76	
12310.00	94.610	177.740	7318.10	4884.36	4861.47	475.11	2.73	BAKER DRILLED USING 3RD PARTY MWD - LAST SURVEY (2700'FSL & 676'FEL, SEC.23)
12460.00	94.610	177.740	7306.04	5033.70	5010.87	481.01	0.00	BAKER DRILLED USING 3RD PARTY MWD - PTB (2550'FSL & 670'FEL, SEC.23)

HOLE & CASING SECTIONS - Ref Wellbore: BYBEE 3 AWB Ref Wellpath: BYBEE 3 AWP

String/Diameter	Start MD [ft]	End MD [ft]	Interval [ft]	Start TVD [ft]	End TVD [ft]	Start N/S [ft]	Start E/W [ft]	End N/S [ft]	End E/W [ft]
13.5in Open Hole	25.00	1595.00	1570.00	25.00	1594.46	0.00	0.00	-8.34	3.36
9.625in Casing Surface	25.00	1595.00	1570.00	25.00	1594.46	0.00	0.00	-8.34	3.36
7.875in Open Hole	1595.00	12460.00	10865.00	1594.46	7306.04	-8.34	3.36	-5010.87	481.01
5.5in Casing Production	25.00	12460.00	12435.00	25.00	7306.04	0.00	0.00	-5010.87	481.01



Actual Wellpath Report

BYBEE 3 AWP

Page 7 of 9



REFERENCE WELLPATH IDENTIFICATION

Operator	EXTRACTION OIL & GAS	Slot	SLOT#03 BYBEE 3 (2267'FSL & 1136'FEL, SEC.14)
Area	COLORADO	Well	BYBEE 3
Field	WELD COUNTY (NAD83/TRUE NORTH)	Wellbore	BYBEE 3 AWP
Facility	SEC.14-T02N-R68W		

TARGETS

Name	TVD [ft]	North [ft]	East [ft]	Grid East [US ft]	Grid North [US ft]	Latitude	Longitude	Shape
SEC.14-T02N-R62W	0.00	0.00	56.23	3149614.52	1293445.00	40°08'15.580"N	104°57'53.539"W	polygon
SEC.23-T02N-R62W	0.00	0.00	56.23	3149614.52	1293445.00	40°08'15.580"N	104°57'53.539"W	polygon
BYBEE 3 BHL ON PLAT (2500'FSL & 710'FEL, SEC.23)	7220.00	-5061.19	440.76	3150029.55	1288386.44	40°07'25.565"N	104°57'48.589"W	point
BYBEE 3 LANDING POINT ON PLAT (2190'FSL & 710'FEL, SEC.14)	7220.00	-77.63	426.13	3149984.86	1293369.61	40°08'14.813"N	104°57'48.776"W	point
BYBEE 3 LANDING POINT REV-1 (2190'FSL & 766'FEL, SEC.14)	7220.00	-77.61	370.00	3149928.73	1293369.29	40°08'14.813"N	104°57'49.499"W	point
BYBEE 3 TARGET 1	7265.00	-213.70	425.17	3149984.72	1293233.54	40°08'13.468"N	104°57'48.789"W	point
BYBEE 3 TARGET 2	7265.00	-846.99	428.81	3149992.18	1292600.31	40°08'07.210"N	104°57'48.742"W	point
BYBEE 3 TARGET 3	7266.00	-1546.92	430.80	3149998.39	1291900.44	40°08'00.293"N	104°57'48.717"W	point
BYBEE 3 TARGET 4	7277.00	-2546.83	433.63	3150007.26	1290900.60	40°07'50.412"N	104°57'48.680"W	point
BYBEE 3 TARGET 5	7301.00	-3446.74	436.18	3150015.23	1290000.76	40°07'41.519"N	104°57'48.648"W	point
BYBEE 3 BHL ON PLAT REV-1 (2500'FSL & 710'FEL, SEC.23)	7323.00	-5061.19	440.76	3150029.55	1288386.44	40°07'25.565"N	104°57'48.589"W	point
BYBEE 3 TARGET 8	7323.00	-5061.19	440.76	3150029.55	1288386.44	40°07'25.565"N	104°57'48.589"W	point



Actual Wellpath Report

BYBEE 3 AWP

Page 8 of 9



REFERENCE WELLPATH IDENTIFICATION

Operator	EXTRACTION OIL & GAS	Slot	SLOT#03 BYBEE 3 (2267'FSL & 1136'FEL, SEC.14)
Area	COLORADO	Well	BYBEE 3
Field	WELD COUNTY (NAD83/TRUE NORTH)	Wellbore	BYBEE 3 AWB
Facility	SEC.14-T02N-R68W		

TARGETS

Name	TVD [ft]	North [ft]	East [ft]	Grid East [US ft]	Grid North [US ft]	Latitude	Longitude	Shape
BYBEE 3 TARGET 6	7326.00	-4246.67	438.45	3150022.33	1289200.90	40°07'33.614"N	104°57'48.619"W	point
BYBEE 3 TARGET 7	7326.00	-4746.62	439.87	3150026.76	1288700.99	40°07'28.673"N	104°57'48.601"W	point
SEC.14/23-T02N-R62W SETBACK (460' 1/2 SECTION LINE (14) & 2500'FSL, SEC.23)	7475.00	0.00	56.23	3149614.52	1293445.00	40°08'15.580"N	104°57'53.539"W	polygon

WELLPATH COMPOSITION - Ref Wellbore: BYBEE 3 AWB Ref Wellpath: BYBEE 3 AWP

Start MD [ft]	End MD [ft]	Positional Uncertainty Model	Log Name/Comment	Wellbore
25.00	1519.00	ISCWSA MWD, Rev. 3 (Standard)	BAKER HANDS DRILLED USING 3RD PARTY MWD 13.5" HOLE <196-1519>	BYBEE 3 AWB
1519.00	12310.00	ISCWSA MWD, Rev. 3 (Standard)	BAKER HANDS DRILLED USING 3RD PARTY MWD <1658-12310>	BYBEE 3 AWB
12310.00	12460.00	Blind Drilling (std)	Projection to bit	BYBEE 3 AWB



Actual Wellpath Report

BYBEE 3 AWP

Page 9 of 9



REFERENCE WELLPATH IDENTIFICATION			
Operator	EXTRACTION OIL & GAS	Slot	SLOT#03 BYBEE 3 (2267'FSL & 1136'FEL, SEC.14)
Area	COLORADO	Well	BYBEE 3
Field	WELD COUNTY (NAD83/TRUE NORTH)	Wellbore	BYBEE 3 AWB
Facility	SEC.14-T02N-R68W		

WELLPATH COMMENTS				
MD [ft]	Inclination [°]	Azimuth [°]	TVD [ft]	Comment
196.00	2.260	207.410	195.96	BAKER DRILLED USING 3RD PARTY MWD - FIRST SURVEY
7520.20	77.033	178.692	7251.00	CROSSED SETBACK (2189'FSL & 723'FEL SEC 14)
7651.00	88.560	181.640	7267.76	LANDING POINT (2059'FSL & 722'FEL SEC 14)
12310.00	94.610	177.740	7318.10	BAKER DRILLED USING 3RD PARTY MWD - LAST SURVEY (2700'FSL & 676'FEL, SEC.23)
12460.00	94.610	177.740	7306.04	BAKER DRILLED USING 3RD PARTY MWD - PTB (2550'FSL & 670'FEL, SEC.23)