

HALLIBURTON

iCem[®] Service

WPX ENERGY ROCKY MOUNTAIN LLC-EBUS

For: Kinzie Beavers & Dylan Goudie

Date: Thursday, February 11, 2016

RU 31-8 Surface

API # 05-045-22773-00

Sincerely,

Grand Junction Cement Engineering

2.0 Real-Time Job Summary

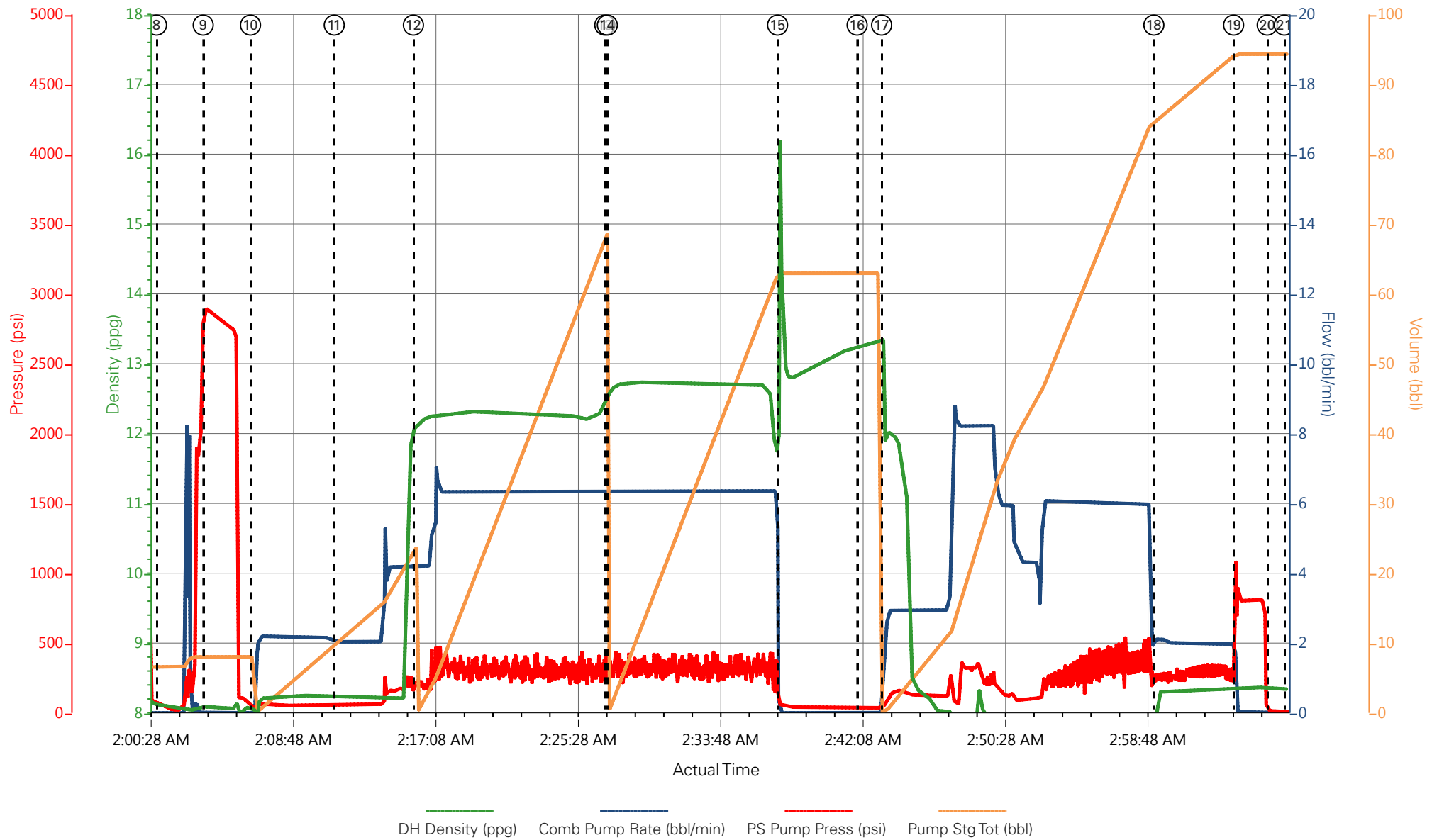
2.1 Job Event Log

Type	Seq. No.	Graph Label	Date	Time	Source	Combine d Pump Rate (bbl/min)	Pass-Side Pump Pressure (psi)	Downhol e Density (ppg)	Pump Stage Total (bbl)	Comments
Event	1	Call Out	2/10/2016	17:00:00	USER					
Event	2	Pre-Convoy Safety Meeting	2/10/2016	19:15:00	USER					ALL HES PRESENT
Event	3	Crew Leave Yard	2/10/2016	19:30:00	USER					
Event	4	ARRIVE AT LOCATION	2/10/2016	22:00:00	USER					RIG HAD NOT STARTED RUNNING CASING
Event	5	Assessment Of Location Safety Meeting	2/10/2016	22:15:00	USER					
Event	6	Pre-Rig Up Safety Meeting	2/10/2016	22:45:00	USER					ALL HES PRESENT
Event	7	Rig-Up Completed	2/11/2016	01:30:00	USER					1-ELITE, 1-660 BULK TRAILER, 1-F550 PICK UP, 9.625" QUICK LATCH PLUG CONTAINER, 2" PUMP IRON, 4" SUCTION HOSE
Event	22	Pre-Job Safety Meeting	2/11/2016	01:50:00	USER					ALL HES AND RIG CREW PRESENT
Event	42	Start Job	2/11/2016	02:01:00	USER	0.00	0.00	8.32	0.0	TD-1228', TP-1218', SJ-47', OH-13.5", MUD-9.1PPG 50VISC, CSG-9.625" 32.3# H40
Event	43	Test Lines	2/11/2016	02:03:43	RTD Import	0.00	2890.45	8..40	2.0	Test Lines
Event	45	Pump Spacer 1*	2/11/2016	02:06:30	RTD Import	4.00	170.8	8.36	20.0	FRESH WATER
Event	61	Mud Cup Sample Pulled	2/11/2016	02:11:24	RTD Import	2.05	52.59	8.24	10.2	Mud Cup Sample Pulled
Event	65	Pump Lead Cement*	2/11/2016	02:16:02	RTD Import	6.30	320.00	12.30	65.7	Pump Lead Cement* VArCem GJ1 155SKS, 12.3PPG, 2.38CF/SK, 13.77GAL/SK

Event	69	Pump Tail Cement*	2/11/2016	02:27:14	RTD Import	6.33	295.41	12.80	65.7	Pump Tail Cement VariCem GJ1* 175SKS, 12.8PPG, 2.11CF/SK, 11.78GAL/SK
Event	70	Mud Cup Sample Pulled	2/11/2016	02:27:23	RTD Import	6.34	253.22	12.82	1.0	Mud Cup Sample Pulled
Event	86	Shutdown	2/11/2016	02:37:20	USER					WASHED UP ON TOP OF PLUG
Event	134	Drop Plug	2/11/2016	02:42:00	USER					PLUG AWAY VERIFIED BY TATTLE TAIL
Event	135	Pump Displacement*	2/11/2016	02:43:26	RTD Import	6.00	390.0	8.40	82.2	FRESH WATER
Event	140	Slow Rate	2/11/2016	02:59:21	USER	2.11	294.47	8.30	83.1	SLOW RATE LAST 10 BBLS
Event	141	Bump Plug	2/11/2016	03:04:02	RTD Import	0.00	300.00	8.35	92.2	Bump Plug
Event	142	Check Floats	2/11/2016	03:06:00	USER	0.00	810.00	8.33	92.2	FLOATS HELD .5 BBLS BACK
Event	143	End Job	2/11/2016	03:07:00	USER					GOOD RETURNS THROUGH OUT JOB, 26 BBLS CEMENT TO SURFACE
Event	144	Rig-Down Completed	2/11/2016	04:30:00	USER					
Event	145	Crew Leave Location	2/11/2016	05:15:00	USER					THANK YOU FOR CHOOSING HALLIBURTON, ANDREW BRENNECKE AND CREW

H2O temp-88, cl-0, pH-7

WPX - RU 31-8 - 9.625" SURFACE



- | | | | | |
|---|--------------------------------------|---|-----------------------------------|------------------------|
| ① Call Out n/a;n/a;n/a;n/a | ③ Crew Leave Yard n/a;n/a;n/a;n/a | ⑤ Assessment Of Location Safety Meeting n/a;n/a;n/a;n/a | ⑦ Rig-Up Completed 9.06;0;-1.81;0 | ⑨ Test Lines 8.1;0;289 |
| ② Pre-Convoy Safety Meeting n/a;n/a;n/a;n/a | ④ ARRIVE AT LOCATION n/a;n/a;n/a;n/a | ⑥ Pre-Rig Up Safety Meeting n/a;n/a;n/a;n/a | ⑧ Start Job 8.12;0;61.97;6.53 | ⑩ Pump Spacer 1* 8. |



HALLIBURTON | iCem® Service

Created: 2016-02-11 03:37:31, Version: 4.2.384

Edit

Customer: WPX ENERGY ROCKY MOUNTAIN LLC-EBUS

Job Date: 2/11/2016 1:36:26 AM

Well: RU 31-8

Representative: ROBERT BROWN

Sales Order #: 903108985

ELITE#6: A.BRENNECKE/A.ANGELO

WPX - RU 31-8 - 9.625" SURFACE

