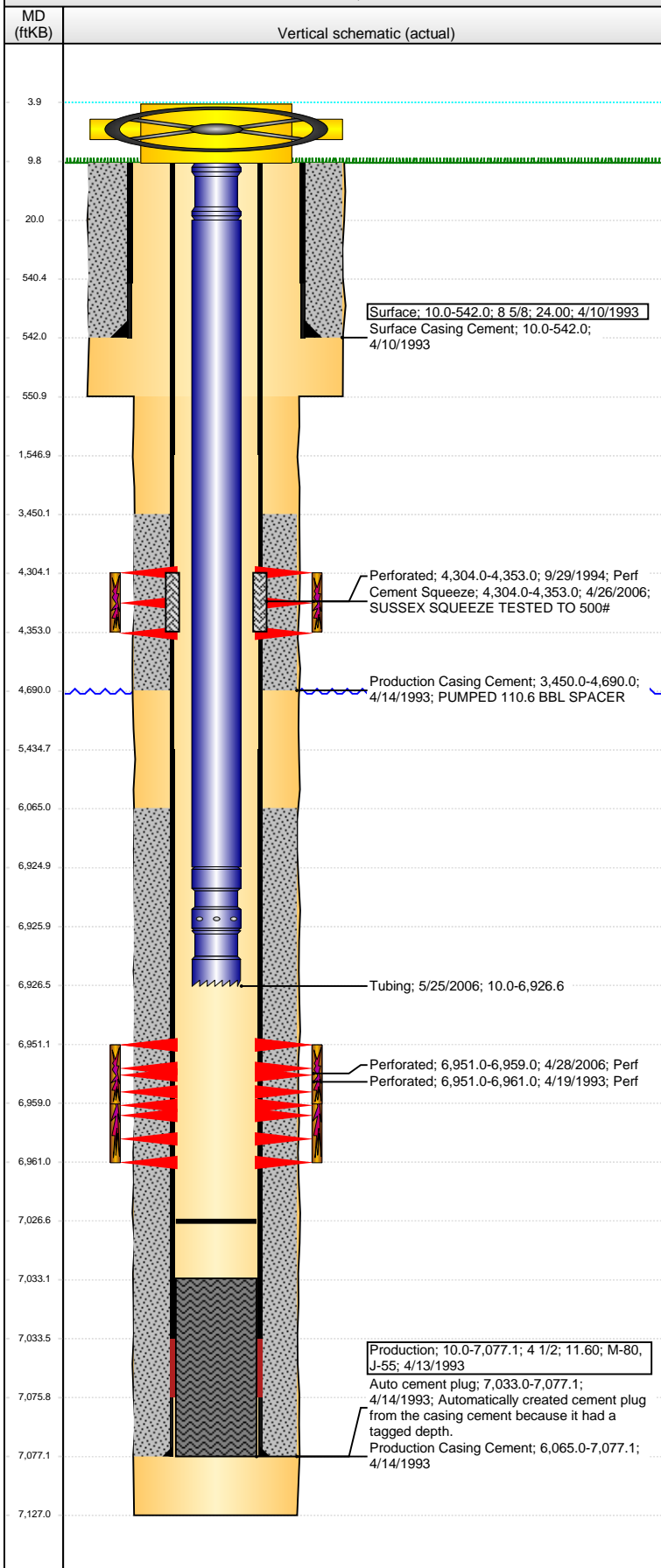


**Well Name: RUBY RED D08-08**

VERTICAL - ORIGINAL HOLE, 4/20/2016 10:16:13 AM



## Well Header

API 05-123-16887	Business Unit DJ BASIN	District 15	Well Config VERTICAL
Original KB Elevation (ft) 4,741	KB - GL / MSL (ftKB) 10.00	Spud Date 4/10/1993	P & A Date
Comment 10.5# & 11.5# 4 1/2 PROD CSG			
Directions To Well			

## Congressional Location

Quarter 1	Quarter 2	Quarter 3	Quarter 4	Section	Township	Twnshp N...	Range	Rng E/W Dir
		SE	NE	8	3	N	64	W

## Bottom Hole Location

North-South Distance (ft)	From N or S Line	East-West Distance (ft)	From E or W Line

## Plug Back Total Depths

Date	Depth (ftKB)	Method	Com
4/13/1993	7,033.0	CASING TALLY	TOP OF SHOE JOINT W/BAFFLE
4/19/1993	7,047.0	CASED HOLE LOG	DEPTH LOGGER ON CBL
10/14/1994	7,033.0	TAG	CLEAN OUT
5/24/2006	7,026.5	TAG	TAG FILL

## Wellbore Sections

Section Des	Size (in)	Act Top, MD (ftKB)	Act Btm, MD (ftKB)
SURFACE	12 1/4	10.0	551.0
PRODUCTION	7 7/8	551.0	7,127.0

## Zone Statuses

Zone Name	Status Date	Status	Fluid Type	Job	Prod Method
CODELL	5/18/1993	PR	Water	DRILLING/CO...	Flowing
CODELL	5/11/2006	PR		RE-FRAC, 4/24...	
CODELL	4/16/2010	PR			
CODELL	6/1/2012	PR			
CODELL	4/14/2016	SI			
SUSSEX	11/8/1994	PR		RECOMPLETI...	
SUSSEX	4/26/2006	AB		RE-FRAC, 4/24...	

## Casing Strings

### Surface, 542.0ftKB

Casing Description	Run Date	OD (in)	Wt/Len (l...)	Grade	Top, MD (ft...)	MD (ftKB)
Surface	4/10/1993	8 5/8	24.00		10.0	542.0

### Production, 7,077.2ftKB

Casing Description	Run Date	OD (in)	Wt/Len (l...)	Grade	Top, MD (ft...)	MD (ftKB)
Production	4/13/1993	4 1/2	10.50	J-55	10.0	7,077.2

## Cement

Description	Top Depth (ftKB)	Bottom Depth (ftKB)
Surface Casing Cement	10.0	542.0
Production Casing Cement	3,450.0	4,690.0
Production Casing Cement	6,065.0	7,077.2
Cement Squeeze	4,304.0	4,353.0

## Tubing Strings

Tubing Description	Run Date	String...	ID (in)	Wt (lb/ft)	Grade	Len (ft)	Set De...
Tubing	5/25/2006	2 3/8	1.995	4.70	J-55	6,916.64	

## Tubing Components

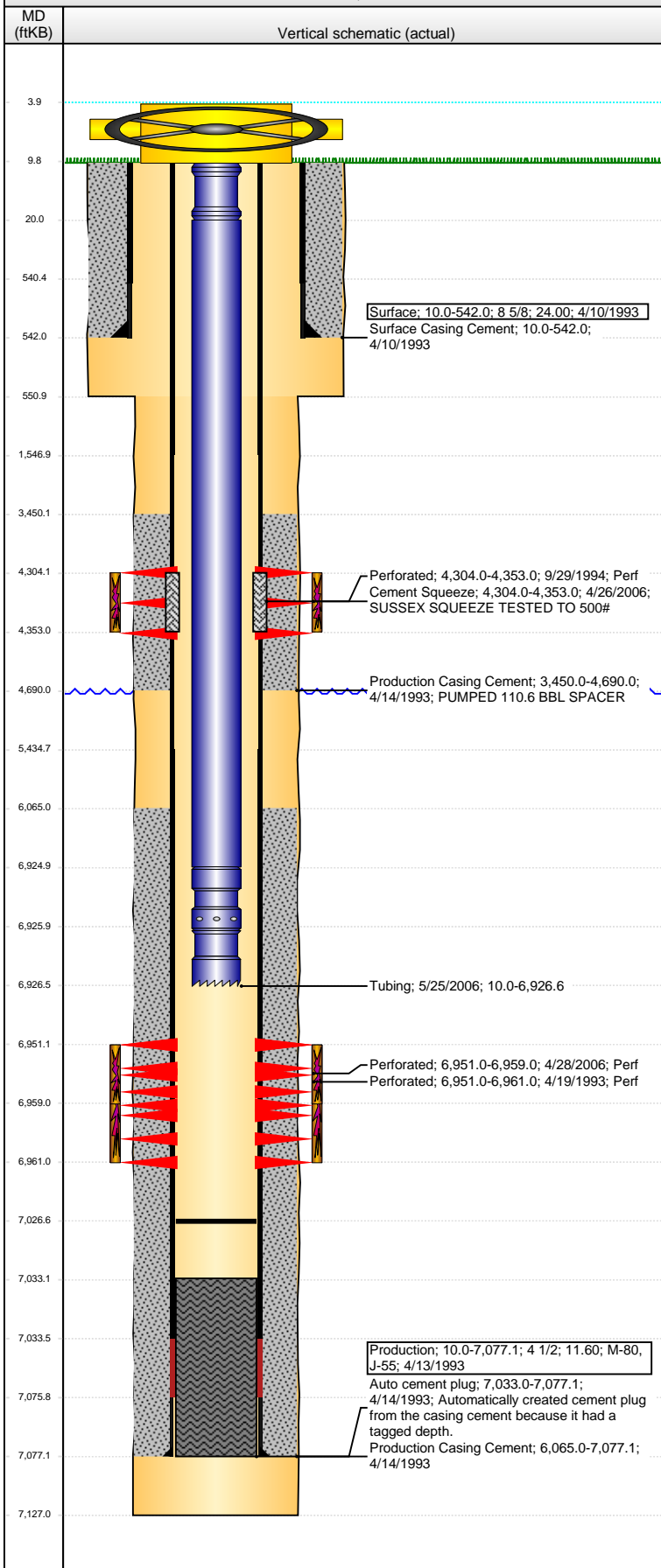
Item Des	OD (in)	Wt (lb/ft)	Grade	Jts	Len (ft)	Btm (ftKB)	Btm (TVD) (ftKB)
Pup Joint	2 3/8		J-55	1	10.00	20.0	
EUE 8rd Tubing	2 3/8	4.70	J-55	216	6,904.79	6,924.8	
Pump Seating	2 3/8	1.10			1.10	6,925.9	
Nipple							
Notched collar	2 3/8				0.75	6,926.6	

## Perforation Data

Zone	Bnch/St g	Entered Shot Total	Top (ftKB)	Btm (ftKB)	Date
SUSSEX, ORIGINAL HOLE		15	4,304.00	4,353.00	9/29/1994
CODELL, ORIGINAL HOLE		32	6,951.00	6,959.00	4/28/2006
CODELL, ORIGINAL HOLE		41	6,951.00	6,961.00	4/19/1993

**Well Name: RUBY RED D08-08**

VERTICAL - ORIGINAL HOLE, 4/20/2016 10:16:16 AM



## Stimulations & Treatments

Date 4/23/1993	Zone CODELL, ORIGINAL HOLE	Primary Job Type DRILLING/COMPLETION - ORIGINAL
Technical Result	Tech Result Details	Tech Result Note

Comment  
SCREENED OUT

Date 10/4/1994	Zone SUSSEX, ORIGINAL HOLE	Primary Job Type RECOMPLETION
Technical Result	Tech Result Details	Tech Result Note

Comment

Date 5/9/2006	Zone CODELL, ORIGINAL HOLE	Primary Job Type RE-FRAC
Technical Result	Tech Result Details	Tech Result Note

Comment

## Other In Hole

Run Date	Des	OD (in)	Top (ftKB)	Btm (ftKB)

## Logs

Date	Type	Top, MD (ftKB)	Btm, MD (ftKB)
4/13/1993	COMPENSATED DENSITY	3,900.0	7,088.0
4/13/1993	INDUCTION	3,900.0	4,400.0
4/19/1993	CBL/CCL/GR	3,300.0	7,047.0