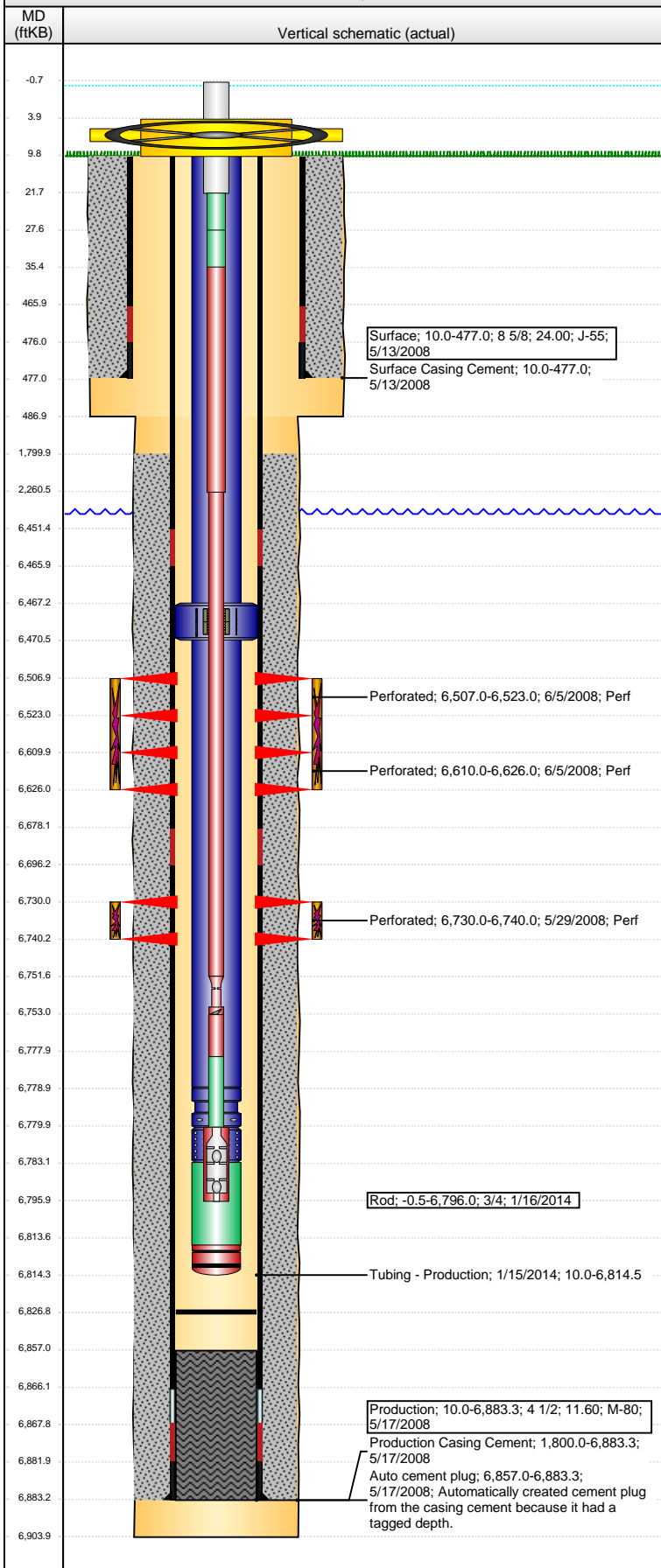


Well Name: KEHN USX AD19-11

VERTICAL - ORIGINAL HOLE, 4/18/2016 4:28:38 PM



Well Header

API 05-123-26045	Business Unit DJ BASIN	District 15	Well Config VERTICAL
Original KB Elevation (ft) 4,763	KB - GL / MSL (ftKB) 10.00	Spud Date 5/13/2008	P & A Date
Comment			

Directions To Well

From the intersection of CR 80 and HWY 392 head South on HWY 392 0.8 miles. Turn East 0.1, North 0.1 into location.

Congressional Location

Quarter 1	Quarter 2	Quarter 3 NE	Quarter 4 SW	Section 19	Township 7 N	Twnshp N...	Range 62 W	Rng E/W Dir
-----------	-----------	-----------------	-----------------	---------------	-----------------	-------------	---------------	-------------

Bottom Hole Location

North-South Distance (ft)	From N or S Line	East-West Distance (ft)	From E or W Line
---------------------------	------------------	-------------------------	------------------

Plug Back Total Depths

Date	Depth (ftKB)	Method	Com
5/17/2008	6,866.2	CASING TALLY	TOP OF FLOAT COLLAR
5/28/2008	6,857.0	CASED HOLE LOG	DEPTH LOGGER ON CBL
3/25/2009	6,825.0	TAG	TAGGED FILL USING TBG TALLY.
1/15/2014	6,826.9	TAG	TBG TALLY MEASUREMENT.

Wellbore Sections

Section Des	Size (in)	Act Top, MD (ftKB)	Act Btm, MD (ftKB)
SURFACE	12 1/4	10.0	487.0
PRODUCTION	7 7/8	487.0	6,904.0

Zone Statuses

Zone Name	Status Date	Status	Fluid Type	Job	Prod Method
CODELL	9/3/2008	PR	Water	DRILLING/CO...	Flowing
CODELL	6/1/2009	PR		DRILLING/CO...	
NIOBRARA	9/3/2008	PR	Water	DRILLING/CO...	Flowing
NIOBRARA	6/1/2009	PR			
NIOBRARA	1/6/2012	PR			

Casing Strings

Surface, 477.0ftKB

Casing Description	Run Date	OD (in)	Wt/Len (l...)	Grade	Top, MD (ft...)	MD (ftKB)
Surface	5/13/2008	8 5/8	24.00	J-55	10.0	477.0

Production, 6,883.3ftKB

Casing Description	Run Date	OD (in)	Wt/Len (l...)	Grade	Top, MD (ft...)	MD (ftKB)
Production	5/17/2008	4 1/2	11.60	M-80	10.0	6,883.3

Cement

Description	Top Depth (ftKB)	Bottom Depth (ftKB)
Surface Casing Cement	10.0	477.0
Description	Top Depth (ftKB)	Bottom Depth (ftKB)
Production Casing Cement	1,800.0	6,883.3

Tubing Strings

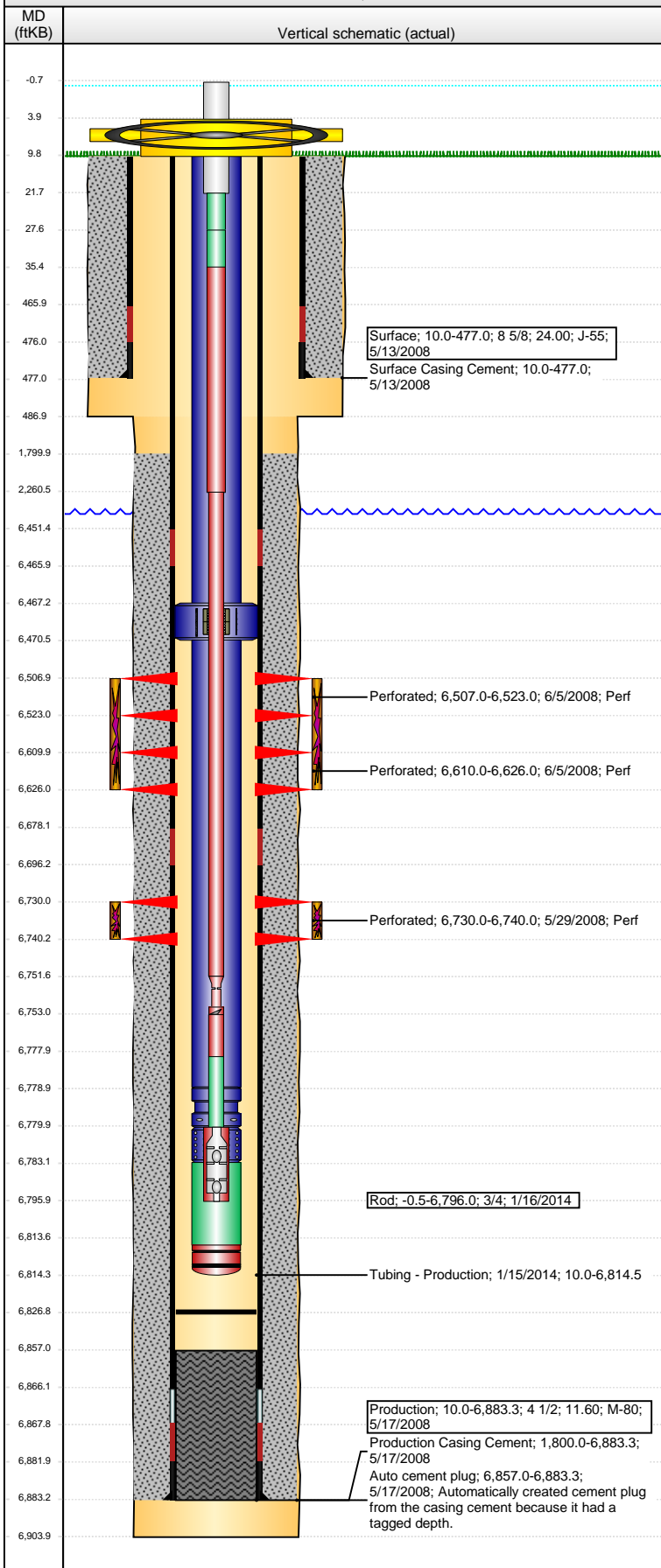
Tubing Description	Run Date	String...	ID (in)	Wt (lb/ft)	Grade	Len (ft)	Set De...
Tubing - Production	9/5/2008	2 3/8	1.995	4.70	J-55	6,483.71	6,491.2
Tubing Description	Run Date	String...	ID (in)	Wt (lb/ft)	Grade	Len (ft)	Set De...
Tubing - Production	3/27/2009	2 3/8	1.995	4.70	J-55	6,805.38	6,812.9
Tubing Description	Run Date	String...	ID (in)	Wt (lb/ft)	Grade	Len (ft)	Set De...
Tubing - Production	1/15/2014	2 3/8	1.995	4.70	J-55	6,804.46	6,814.0

Tubing Components

Item Des	OD (in)	Wt (lb/ft)	Grade	Jts	Len (ft)	Btm (ftKB)	Btm (TVD) (ftKB)
EUE 8rd Tubing	2 3/8	4.70	J-55	208	6,457.17	6,467.2	
Anchor/catcher	3.99	4.70	J-55	1	3.25	6,470.4	6,470.1
EUE 8rd Tubing	2 3/8	4.70	J-55	10	308.41	6,778.8	6,778.4
Pump Seating Nipple	2 3/8	4.70	N-80	1	1.13	6,780.0	6,779.5
Perforated Joint	2 3/8	4.70	J-55	1	3.10	6,783.1	6,782.6
Mud Anchor	2 3/8	4.70	J-55	1	30.72	6,813.8	6,813.3
Bull Plug	2 3/8	4.70	J-55	1	0.68	6,814.5	6,814.0

Well Name: KEHN USX AD19-11

VERTICAL - ORIGINAL HOLE, 4/18/2016 4:28:40 PM



Rods & Pumps						
Rod Description			Run Date		Set Depth (ftKB)	
Rod			1/16/2014		6,796.0	
Comment						
Item Description			OD Nominal (in)	Joints	Length (ft)	
Polished Rod			1 1/4	1	22.00	
Item Description			OD Nominal (in)	Joints	Length (ft)	
Pony Rod			7/8	1	6.00	
Item Description			OD Nominal (in)	Joints	Length (ft)	
Pony Rod			7/8	1	8.00	
Item Description			OD Nominal (in)	Joints	Length (ft)	
Sucker Rod			7/8	89	2,225.00	
Item Description			OD Nominal (in)	Joints	Length (ft)	
Sucker Rod			3/4	180	4,491.00	
Item Description			OD Nominal (in)	Joints	Length (ft)	
Hook Tool			3/4	1	1.50	
Item Description			OD Nominal (in)	Joints	Length (ft)	
Sucker Rod			3/4	1	25.00	
Item Description			OD Nominal (in)	Joints	Length (ft)	
Pony Rod			3/4	1	2.00	
Item Description			OD Nominal (in)	Joints	Length (ft)	
RHAC Pump - THD			1 1/4	1	16.00	
API Pump Type			Barrel Length (ft)	Seating Assembly Type		
R			16.00	C		
Perforation Data						
Zone		Bnch/St g	Entered Shot Total	Top (ftKB)	Btm (ftKB)	Date
NIOBRARA, ORIGINAL HOLE		A	64	6,507.00	6,523.00	6/5/2008
NIOBRARA, ORIGINAL HOLE		B	64	6,610.00	6,626.00	6/5/2008
CODELL, ORIGINAL HOLE			40	6,730.00	6,740.00	5/29/2008
Stimulations & Treatments						
Date		Zone		Primary Job Type		
6/5/2008		CODELL, ORIGINAL HOLE		DRILLING/COMPLETION - ORIGINAL		
Technical Result			Tech Result Details		Tech Result Note	
Success			According to Plan			
Comment						
FRAC THE CODELL @ 22 BPM DUE TO 2328 PSI PRE-JOB 5 MIN ISIP						
Date		Zone		Primary Job Type		
6/5/2008		NIOBRARA, ORIGINAL HOLE		DRILLING/COMPLETION - ORIGINAL		
Technical Result			Tech Result Details		Tech Result Note	
Success			According to Plan			
Comment						
FRAC THE NIOBRARA - SAND WAS RAN 0.1 HIGH DUE TO TIGHT WATER - NO PROBLEMS TO REPORT						
Other In Hole						
Run Date		Des		OD (in)	Top (ftKB)	Btm (ftKB)
Logs						
Date		Type			Top, MD (ftKB)	Btm, MD (ftKB)
5/17/2008		COMPENSATED DENSITY			2,690.0	6,886.0
5/17/2008		INDUCTION			477.0	6,906.0
5/28/2008		CBL/CCL/GR			1,600.0	6,854.0