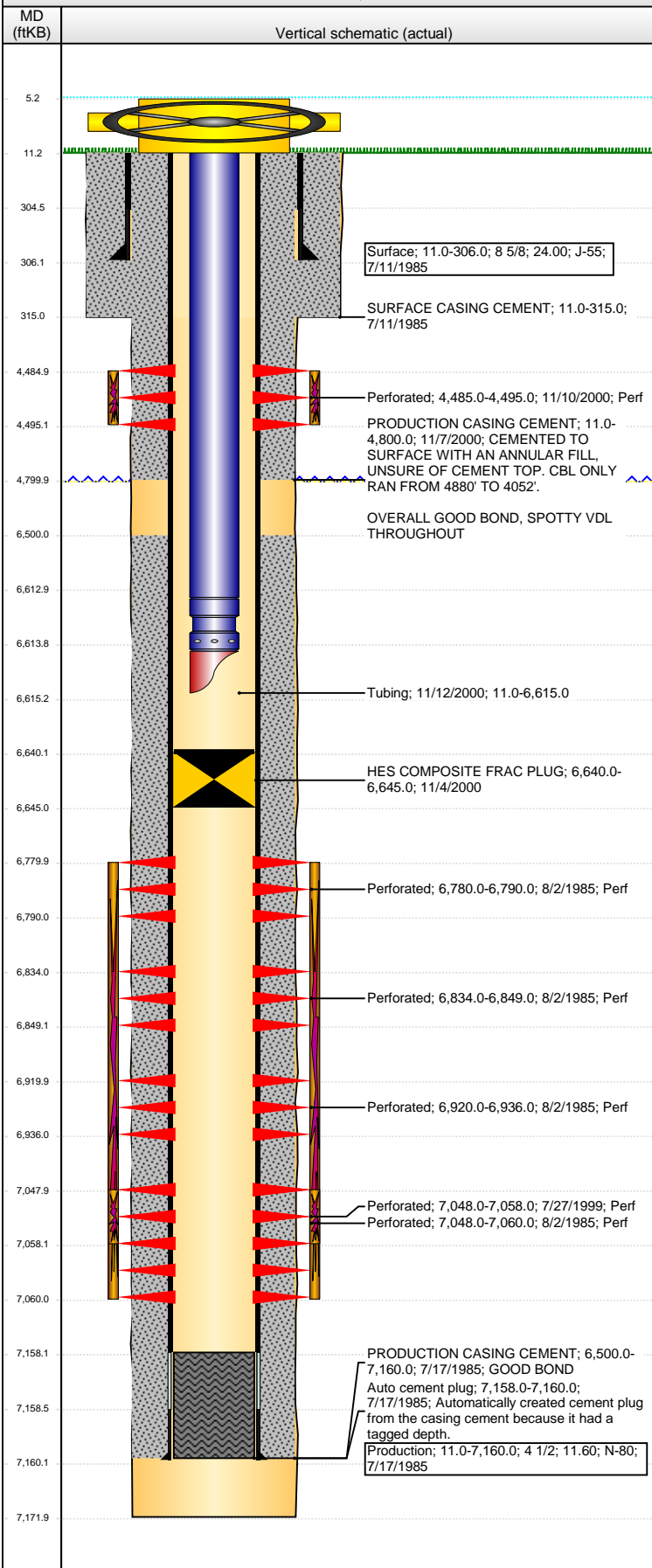


**Well Name: FARAMIR FARMS 6-3**

VERTICAL - ORIGINAL HOLE, 4/18/2016 2:48:34 PM



Well Header			
API	Business Unit	District	Well Config
05-123-12487	DJ BASIN	15	VERTICAL
Original KB Elevation (ft)	KB - GL / MSL (ftKB)	Spud Date	P & A Date
4,837	11.00	7/10/1985	
Comment			
ANNULAR FILL FROM 4800' TO SURFACE FOR SUSSEX RECOMPLETE. PUMPED 50 SX PREMIUM LITE, 150 SX G, AND THEN 408 SX PREMIUM LITE AND GOT RETURNS.			
CBL FOR THIS CEMENT STAGE GOES TO 4052'; RECOMMEND RUNNING CBL TO FIND CEMENT TOP, CEMENT MAY HAVE FELL.			
COMPOSITE FRAC PLUG LEFT IN HOLE AFTER SUSSEX RECOMPLETE.			
Directions To Well			

Congressional Location								
Quarter 1	Quarter 2	Quarter 3	Quarter 4	Section	Township	Twnshp N...	Range	Rng E/W Dir
	SW	SE	NW	6		3 N	64	W

Bottom Hole Location			
North-South Distance (ft)	From N or S Line	East-West Distance (ft)	From E or W Line

Plug Back Total Depths			
Date	Depth (ftKB)	Method	Com
7/16/1985	7,158.0	CASING TALLY	TOP OF FLOAT COLLAR
7/30/1985	7,067.0	CASED HOLE LOG	CBL DEPTH LOGGER
11/12/2000	6,640.0	TAG	C/O TO COMPOSITE FRAC PLUG

Wellbore Sections			
Section Des	Size (in)	Act Top, MD (ftKB)	Act Btm, MD (ftKB)
SURFACE	12 1/4	11.0	315.0
PRODUCTION	7 7/8	315.0	7,172.0

Zone Statuses					
Zone Name	Status Date	Status	Fluid Type	Job	Prod Method
CODELL	8/22/1985	PR		DRILLING/CO...	
CODELL	11/4/2000	SI		RECOMPLETE...	
NIOBRARA	8/22/1985	PR		DRILLING/CO...	
NIOBRARA	11/4/2000	SI		RECOMPLETE...	
SUSSEX	11/12/2000	PR		RECOMPLETE...	

Casing Strings							
Surface, 306.0ftKB							
Casing Description	Run Date	OD (in)	Wt/Len (l...)	Grade	Top, MD (ft...)	MD (ftKB)	
Surface	7/11/1985	8 5/8	24.00	J-55	11.0	306.0	

Production, 7,160.0ftKB							
Casing Description	Run Date	OD (in)	Wt/Len (l...)	Grade	Top, MD (ft...)	MD (ftKB)	
Production	7/17/1985	4 1/2	11.60	N-80	11.0	7,160.0	

Cement		
Description	Top Depth (ftKB)	Bottom Depth (ftKB)
SURFACE CASING CEMENT	11.0	315.0
PRODUCTION CASING CEMENT	6,500.0	7,160.0
PRODUCTION CASING CEMENT	11.0	4,800.0

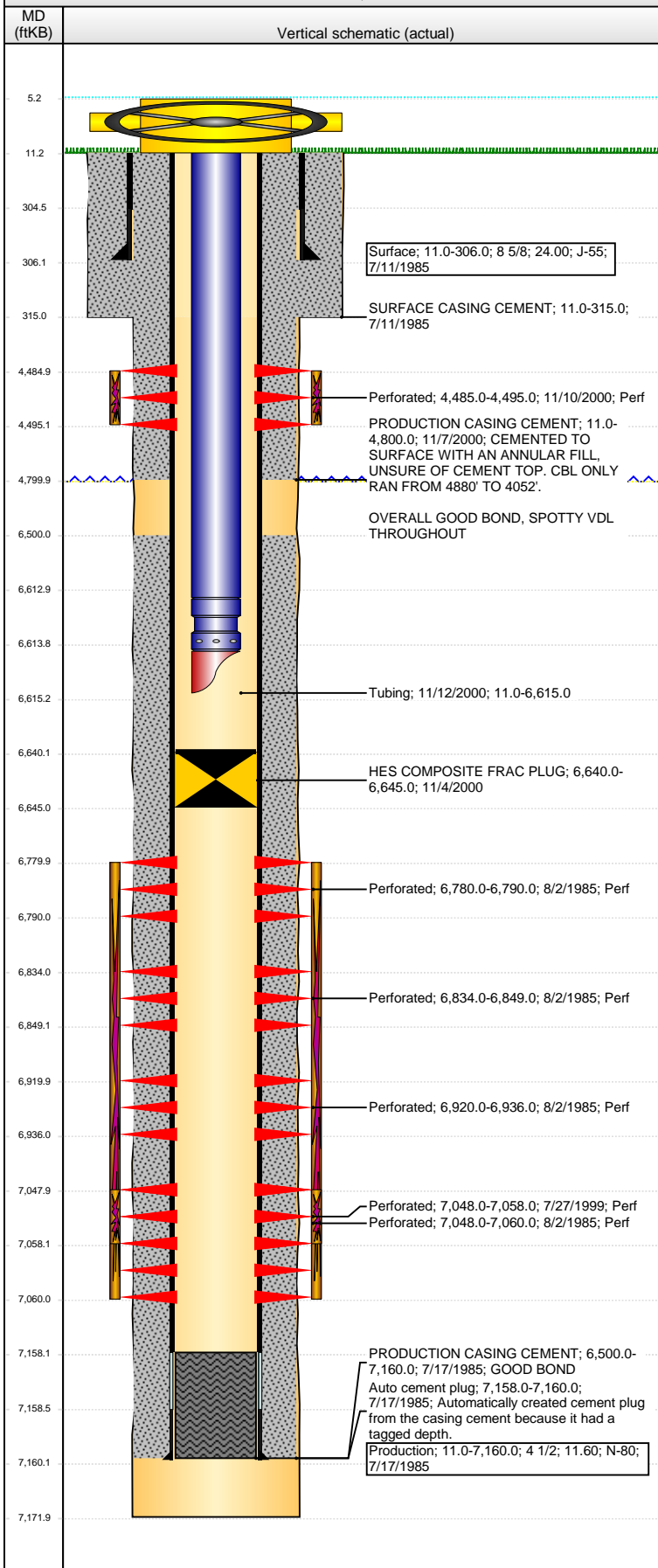
Tubing Strings							
Tubing Description	Run Date	String...	ID (in)	Wt (lb/ft)	Grade	Len (ft)	Set De...
Tubing	11/12/2000	0	2 3/8	1.995	4.70	J-55	6,604.00

Tubing Components							
Item Des	OD (in)	Wt (lb/ft)	Grade	Jts	Len (ft)	Btm (ftKB)	Btm (TVD) (ftKB)
EUE 8rd Tubing	2 3/8	4.70	J-55	214	6,602.00	6,613.0	
Seating Nipple	2 3/8				1.00	6,614.0	
Mule Shoe	2 3/8				1.00	6,615.0	

Perforation Data					
Zone	Bnch/St g	Entered Shot Total	Top (ftKB)	Btm (ftKB)	Date
SUSSEX, ORIGINAL HOLE		60	4,485.00	4,495.00	11/10/2000
NIOBRARA, ORIGINAL HOLE	A	3	6,780.00	6,790.00	8/2/1985
NIOBRARA, ORIGINAL HOLE	B	4	6,834.00	6,849.00	8/2/1985
NIOBRARA, ORIGINAL HOLE	C	3	6,920.00	6,936.00	8/2/1985

**Well Name: FARAMIR FARMS 6-3**

VERTICAL - ORIGINAL HOLE, 4/18/2016 2:48:37 PM



Perforation Data					
Zone	Bnch/St g	Entered Shot Total	Top (ftKB)	Btm (ftKB)	Date
CODELL, ORIGINAL HOLE		40	7,048.00	7,058.00	7/27/1999
CODELL, ORIGINAL HOLE		7	7,048.00	7,060.00	8/2/1985

Stimulations & Treatments		
Date	Zone	Primary Job Type
8/7/1985	NIORARA-CODELL, ORIGINAL HOLE	DRILLING/COMPLETION - ORIGINAL
Technical Result		Tech Result Note

**Comment**  
LIMITED ENTRY FRAC  
IN 5 PPG STAGE STARTED TO SCREEN OUT, INCREASED RATE AND FINISHED JOB.

Date	Zone	Primary Job Type
8/5/1999	CODELL, ORIGINAL HOLE	RE-FRAC
Technical Result		Tech Result Note

Date	Zone	Primary Job Type
11/10/2000	SUSSEX, ORIGINAL HOLE	RECOMPLETION
Technical Result		Tech Result Note

**Comment**

Other In Hole				
Run Date	Des	OD (in)	Top (ftKB)	Btm (ftKB)
11/4/2000	HES COMPOSITE FRAC PLUG	4	6,640.0	6,645.0

Logs			
Date	Type	Top, MD (ftKB)	Btm, MD (ftKB)
7/16/1985	COMPENSATED DENSITY	6,500.0	7,162.0
7/16/1985	INDUCTION	305.0	7,162.0
7/30/1985	CBL/CCL/GR	6,400.0	7,064.0