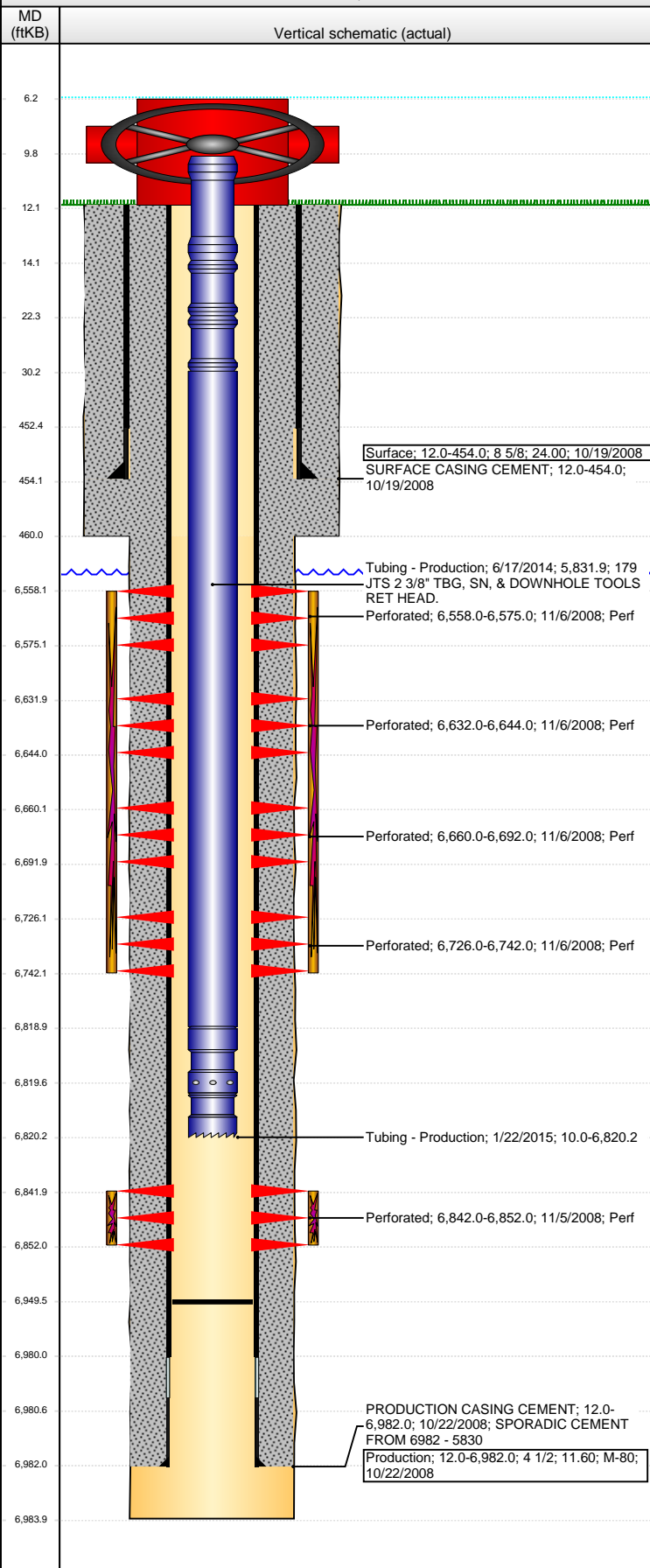


Well Name: FOSS 06-42

VERTICAL - ORIGINAL HOLE, 4/18/2016 2:15:45 PM



Well Header

API	Business Unit	District	Well Config
05-123-24288	DJ BASIN	15	VERTICAL
Original KB Elevation (ft)	KB - GL / MSL (ftKB)	Spud Date	P & A Date
4,708	12.00	10/18/2008	

Comment
DISCREPANCY: DR RPT PROD CSG @ 6982'; ST RPT PROD CSG @ 6981'

Directions To Well
74 & 63, S 1/2, W 3/10, S 1/10 INTO

Congressional Location

Quarter 1	Quarter 2	Quarter 3	Quarter 4	Section	Township	Twnshp N...	Range	Rng E/W Dir
		NW	SE	6	6	N	63	W

Bottom Hole Location

North-South Distance (ft)	From N or S Line	East-West Distance (ft)	From E or W Line

Plug Back Total Depths

Date	Depth (ftKB)	Method	Com
10/22/2008	6,966.0	TAG	FLOAT SHOE W/ BAFFLE
10/30/2008	6,933.0	CASED HOLE LOG	DEPTH LOGGER ON CBL
5/1/2009	6,948.0	TAG	CLEAN OUT TO LAND TUBING
6/16/2014	6,927.4	BOT	213 JTS W/ NO TAG
1/22/2015	6,949.4	TAG	215 JTS TAG

Wellbore Sections

Section Des	Size (in)	Act Top, MD (ftKB)	Act Btm, MD (ftKB)
SURFACE	12 1/4	12.0	460.0
PRODUCTION	7 7/8	460.0	6,984.0

Zone Statuses

Zone Name	Status Date	Status	Fluid Type	Job	Prod Method
NIOBRARA	12/3/2008	PR		DRILLING/CO...	
CODELL	12/3/2008	PR		DRILLING/CO...	

Casing Strings

Casing Description	Run Date	OD (in)	Wt/Len (l...)	Grade	Top, MD (ft...)	MD (ftKB)
Surface	10/19/2008	8 5/8	24.00		12.0	454.0

Production, 6,982.0ftKB

Casing Description	Run Date	OD (in)	Wt/Len (l...)	Grade	Top, MD (ft...)	MD (ftKB)
Production	10/22/2008	4 1/2	11.60	M-80	12.0	6,982.0

Cement

Description	Top Depth (ftKB)	Bottom Depth (ftKB)
SURFACE CASING CEMENT	12.0	454.0
Description	Top Depth (ftKB)	Bottom Depth (ftKB)
PRODUCTION CASING CEMENT	12.0	6,982.0

Tubing Strings

Tubing Description	Run Date	String...	ID (in)	Wt (lb/ft)	Grade	Len (ft)	Set De...
Tubing	5/1/2009	2 3/8				6,818.00	
Tubing Description	Run Date	String...	ID (in)	Wt (lb/ft)	Grade	Len (ft)	Set De...
Tubing - Production	6/17/2014						
Tubing Description	Run Date	String...	ID (in)	Wt (lb/ft)	Grade	Len (ft)	Set De...
Tubing - Production	1/22/2015	2 3/8	1.995	4.70	J-55	6,810.21	

Tubing Components

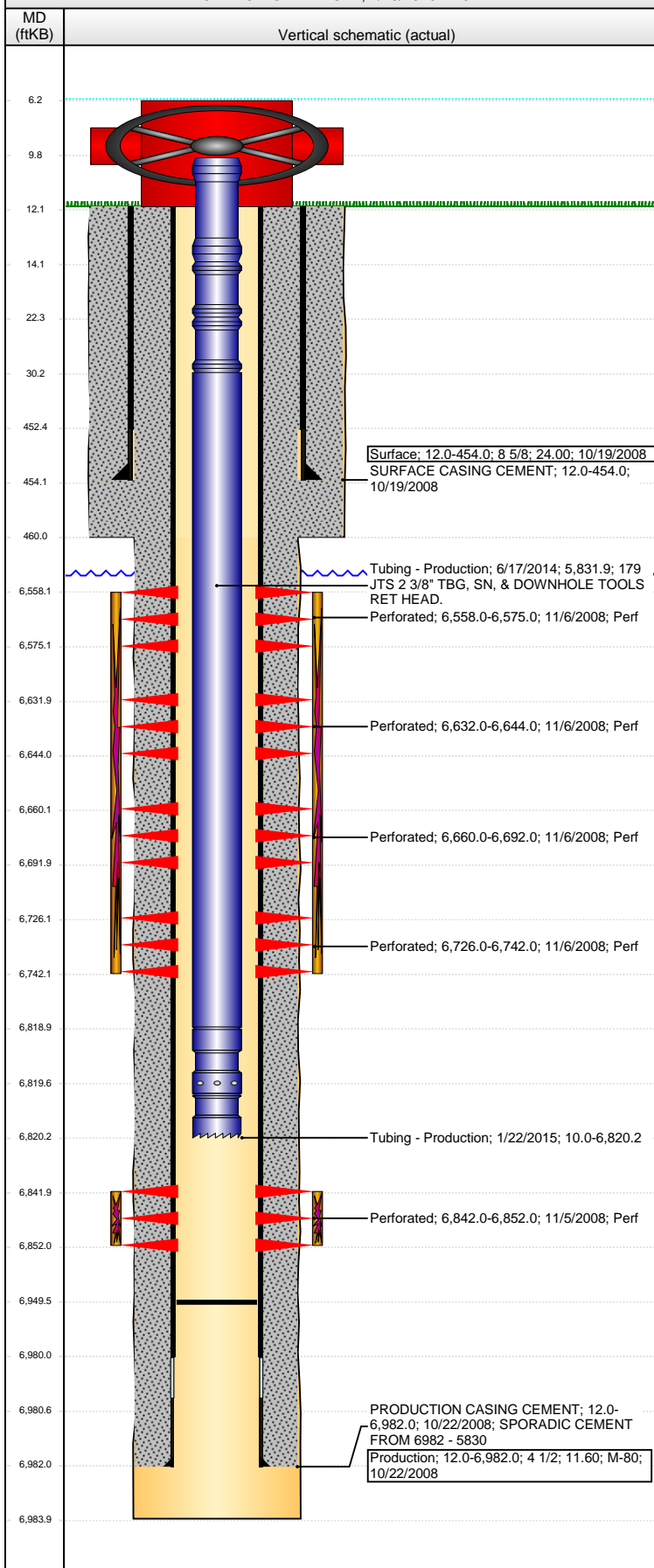
Item Des	OD (in)	Wt (lb/ft)	Grade	Jts	Len (ft)	Btm (ftKB)	Btm (TVD) (ftKB)
Pup Joint	2 3/8	4.70	J-55	1	4.03	14.0	
Pup Joint	2 3/8	4.70	J-55	1	8.15	22.2	
Pup Joint	2 3/8	4.70	J-55	1	8.15	30.3	
Tubing	2 3/8	4.70	J-55	210	6,788.43	6,818.8	
Pump Seating Nipple	2 3/8	1.10	J-55	1	0.95	6,819.7	
Notched collar	2 3/8	1.10	J-55	1	0.50	6,820.2	

Perforation Data

Zone	Bnch/St g	Entered Shot Total	Top (ftKB)	Btm (ftKB)	Date
NIOBRARA, ORIGINAL HOLE	A	34	6,558.00	6,575.00	11/6/2008
NIOBRARA, ORIGINAL HOLE	B	128	6,632.00	6,644.00	11/6/2008
NIOBRARA, ORIGINAL HOLE	B	128	6,660.00	6,692.00	11/6/2008
NIOBRARA, ORIGINAL HOLE	C	64	6,726.00	6,742.00	11/6/2008

Well Name: FOSS 06-42

VERTICAL - ORIGINAL HOLE, 4/18/2016 2:15:47 PM



Perforation Data					
Zone	Bnch/St g	Entered Shot Total	Top (ftKB)	Btm (ftKB)	Date
CODELL, ORIGINAL HOLE		40	6,842.00	6,852.00	11/5/2008
Stimulations & Treatments					
Date	Zone	Primary Job Type			
11/6/2008	CODELL, ORIGINAL HOLE	DRILLING/COMPLETION - ORIGINAL			
Technical Result		Tech Result Details		Tech Result Note	
Comment					
Date	Zone	Primary Job Type			
11/6/2008	NIOBRARA, ORIGINAL HOLE	DRILLING/COMPLETION - ORIGINAL			
Technical Result		Tech Result Details		Tech Result Note	
Comment					
Other In Hole					
Run Date	Des		OD (in)	Top (ftKB)	Btm (ftKB)
Logs					
Date	Type		Top, MD (ftKB)	Btm, MD (ftKB)	
10/21/2008	COMPENSATED DENSITY		3,440.0	6,965.0	
10/21/2008	INDUCTION		453.0	6,985.0	
10/30/2008	CBL/CCL/GR		0.0	6,932.0	
10/23/2013	GYRO		10.0	6,600.0	