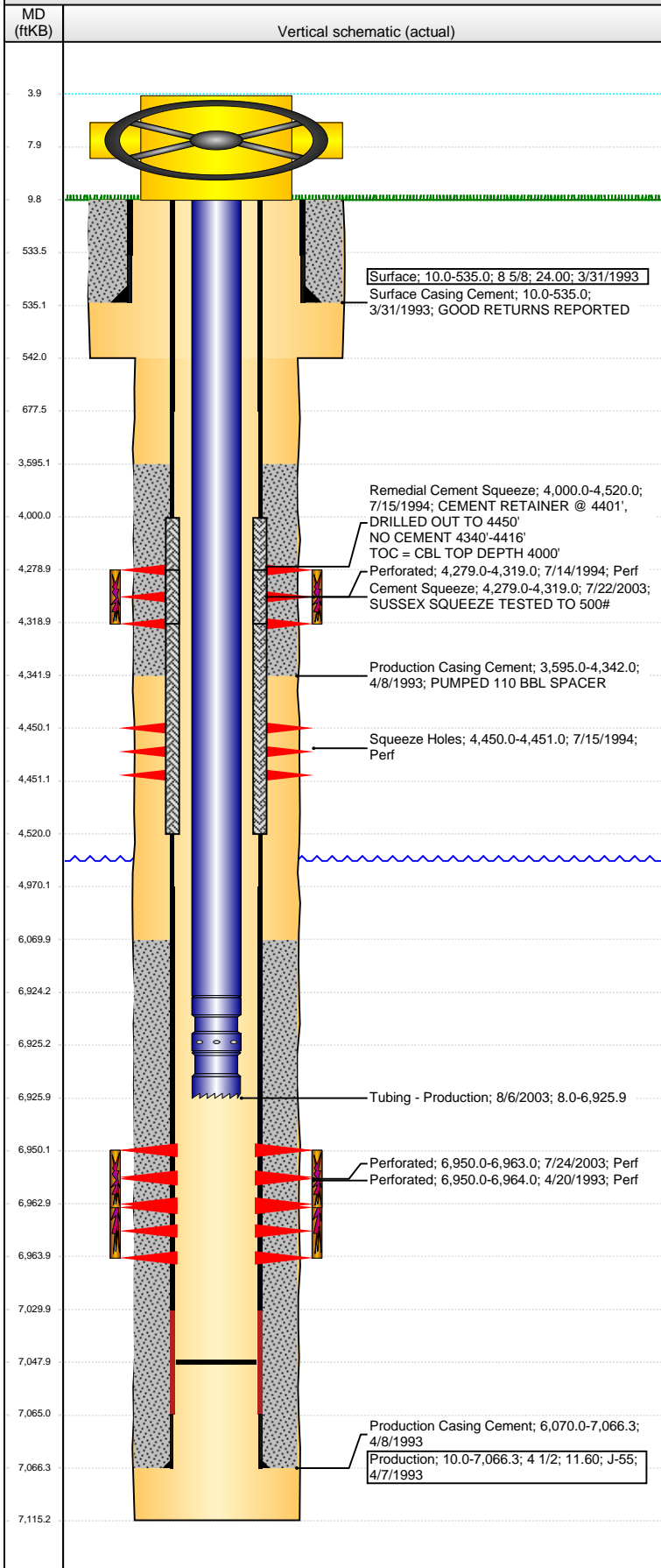


Well Name: RUBY RED D08-07

VERTICAL - ORIGINAL HOLE, 4/18/2016 1:23:50 PM



Well Header

API	Business Unit	District	Well Config
05-123-16886	DJ BASIN	15	VERTICAL
Original KB Elevation (ft)	KB - GL / MSL (ftKB)	Spud Date	P & A Date
4,743	10.00	3/30/1993	

Comment

REM SQZ HOLES @ 4450,4451', TIGHT @ 500,600,3400
HIT SOMETHING @ 1500' (NOT SFC CSG) WHILE RUNNING PROD CSG
10.5# & 11.6# 4 1/2 PROD CSG

Directions To Well

Congressional Location

Quarter 1	Quarter 2	Quarter 3	Quarter 4	Section	Township	Twntshp N...	Range	Rng E/W Dir
		SW	NE	8	3	N	64	W

Bottom Hole Location

North-South Distance (ft)	From N or S Line	East-West Distance (ft)	From E or W Line

Plug Back Total Depths

Date	Depth (ftKB)	Method	Com
4/7/1993	7,031.0	CASING TALLY	SHOE JOINT W/BAFFLE
4/20/1993	7,020.0	CASED HOLE LOG	DEPTH LOGGER ON CBL
7/30/1994	7,031.0	TAG	CLEAN OUT
8/6/2003	7,048.0	TAG	CLEAN OUT

Wellbore Sections

Section Des	Size (in)	Act Top, MD (ftKB)	Act Btm, MD (ftKB)
SURFACE	12 1/4	10.0	542.0
PRODUCTION	7 7/8	542.0	7,115.0

Zone Statuses

Zone Name	Status Date	Status	Fluid Type	Job	Prod Method
SUSSEX	8/17/1994	PR		RECOMPLETI...	
SUSSEX	7/22/2003	AB		RE-FRAC, 7/19...	
CODELL	5/7/1993	PR		DRILLING/CO...	
CODELL	8/1/2003	PR		RE-FRAC, 7/19...	
CODELL	4/16/2010	PR	Water		Flowing
CODELL	8/17/2012	PR			
CODELL	4/14/2016	SI			

Casing Strings

Surface, 535.0ftKB

Casing Description	Run Date	OD (in)	Wt/Len (l...	Grade	Top, MD (ft...	MD (ftKB)
Surface	3/31/1993	8 5/8	24.00		10.0	535.0

Production, 7,066.3ftKB

Casing Description	Run Date	OD (in)	Wt/Len (l...	Grade	Top, MD (ft...	MD (ftKB)
Production	4/7/1993	4 1/2	10.50	J-55	10.0	7,066.3

Cement

Description	Top Depth (ftKB)	Bottom Depth (ftKB)
Surface Casing Cement	10.0	535.0
Production Casing Cement	3,595.0	4,342.0
Production Casing Cement	6,070.0	7,066.3
Remedial Cement Squeeze	4,000.0	4,520.0
Cement Squeeze	4,279.0	4,319.0

Tubing Strings

Tubing Description	Run Date	String...	ID (in)	Wt (lb/ft)	Grade	Len (ft)	Set De...
Tubing - Production	8/6/2003	2 3/8	1.995	4.70	J-55	6,917.88	

Tubing Components

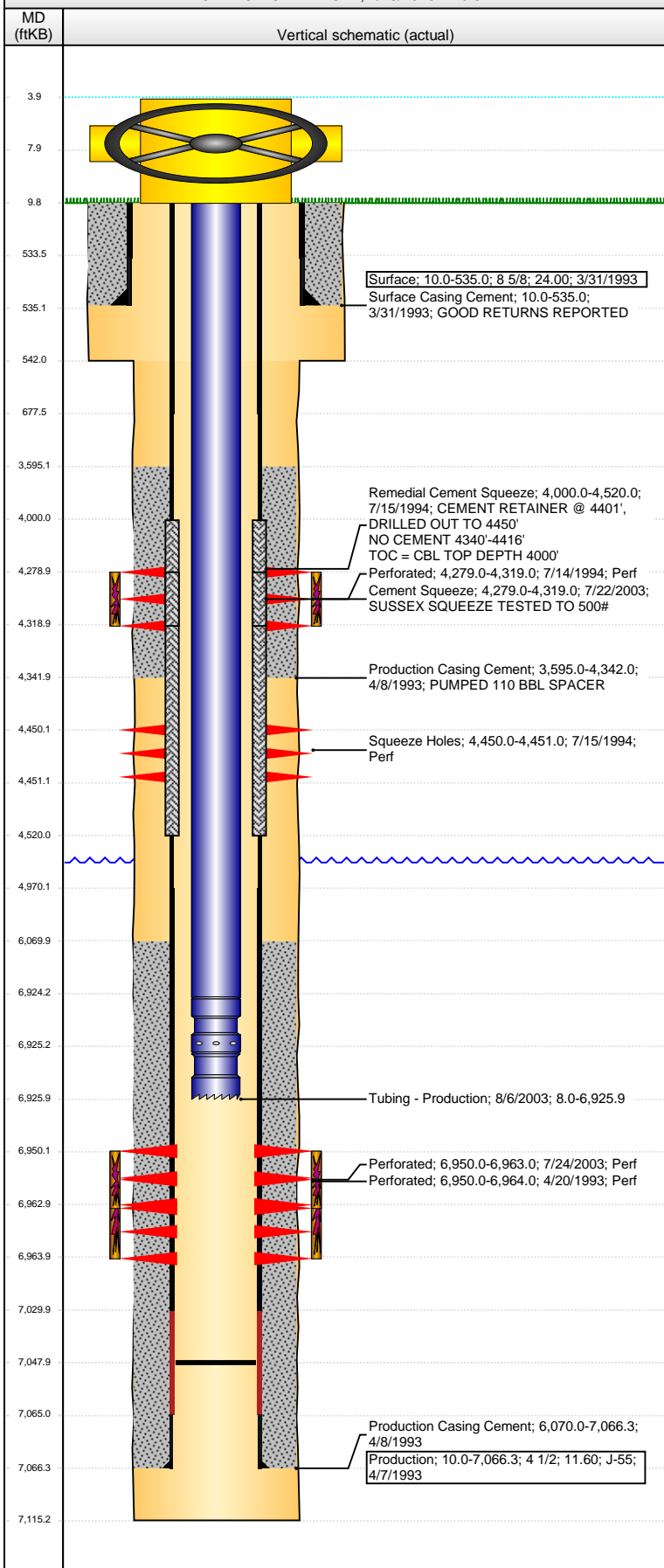
Item Des	OD (in)	Wt (lb/ft)	Grade	Jts	Len (ft)	Btm (ftKB)	Btm (TVD) (ftKB)
EUE 8rd Tubing	2 3/8	4.70	J-55	215	6,916.28	6,924.3	
Pump Seating Nipple	2 3/8				1.00	6,925.3	
Notched collar	2 3/8				0.60	6,925.9	

Perforation Data

Zone	Bnch/St g	Entered Shot Total	Top (ftKB)	Btm (ftKB)	Date
SUSSEX, ORIGINAL HOLE		15	4,279.00	4,319.00	7/14/1994

Well Name: RUBY RED D08-07

VERTICAL - ORIGINAL HOLE, 4/18/2016 1:23:51 PM



Perforation Data					
Zone	Bnch/St g	Entered Shot Total	Top (ftKB)	Btm (ftKB)	Date
CODELL, ORIGINAL HOLE		2	4,450.00	4,451.00	7/15/1994
		56	6,950.00	6,964.00	4/20/1993
		52	6,950.00	6,963.00	7/24/2003

Stimulations & Treatments		
Date	Zone	Primary Job Type
4/26/1993	CODELL, ORIGINAL HOLE	DRILLING/COMPLETION - ORIGINAL
Technical Result	Tech Result Details	Tech Result Note
Comment		

Date	Zone	Primary Job Type
7/21/1994	SUSSEX, ORIGINAL HOLE	RECOMPLETION
Technical Result	Tech Result Details	Tech Result Note
Comment		

Date	Zone	Primary Job Type
7/31/2003	CODELL, ORIGINAL HOLE	RE-FRAC
Technical Result	Tech Result Details	Tech Result Note
Comment		

Other In Hole				
Run Date	Des	OD (in)	Top (ftKB)	Btm (ftKB)

Logs			
Date	Type	Top, MD (ftKB)	Btm, MD (ftKB)
4/7/1993	COMPENSATED DENSITY	6,936.0	7,140.6
4/7/1993	INDUCTION	6,936.0	7,140.6
4/20/1993	CBL/CCL/GR	3,420.0	7,016.0
7/18/1994	CEMENT BOND	4,000.0	4,573.0