

HALLIBURTON

iCem[®] Service

WPX ENERGY ROCKY MOUNTAIN LLC-EBUS

For: Dylan Goudie

Date: Tuesday, December 22, 2015

FED RU 441-8 Surface

API# 05-045-22777-00

Sincerely,
Grand Junction Cement Engineering

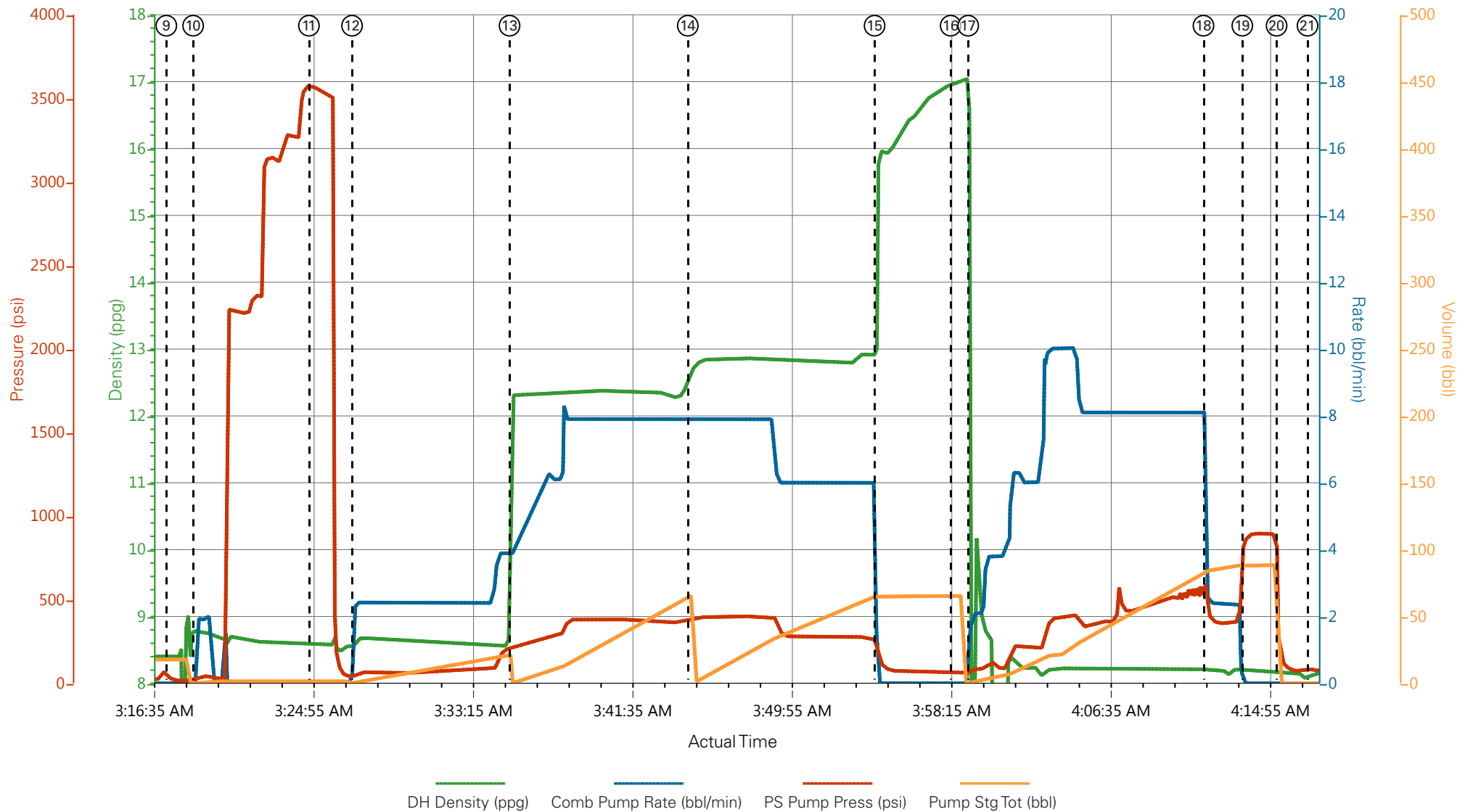
1.0 Real-Time Job Summary

1.1 Job Event Log

Type	Seq. No.	Activity	Graph Label	Date	Time	Source	Pass-Side Pump Pressure (psi)	Downhole Density (ppg)	Combined Pump Rate (bbl/min)	Pump Stage Total (bbl)	Comments
Event	1	Call Out	Call Out	12/21/2015	16:00:00	USER					O/L time 2200
Event	2	Pre-Convoy Safety Meeting	Pre-Convoy Safety Meeting	12/21/2015	17:45:00	USER					
Event	3	Crew Leave Yard	Crew Leave Yard	12/21/2015	18:00:00	USER					1 Elite, 1 660, 1 pickup
Event	4	Arrive At Loc	Arrive At Location	12/21/2015	21:00:00	USER					Rig just preparing to run casing
Event	5	Assessment Of Location Safety Meeting	Assessment Of Location Safety Meeting	12/21/2015	21:15:00	USER					JSA completed - customer offered/received SDS - water test pH 7.5, Cl 0, temp 83 degrees
Event	6	Pre-Rig Up Safety Meeting	Pre-Rig Up Safety Meeting	12/22/2015	00:45:00	USER					
Event	7	Rig-Up Equipment	Rig-Up Equipment	12/22/2015	01:00:00	USER					Hard line to standpipe, water hose to upright, bulk hose to 660
Event	8	Pre-Job Safety Meeting	Pre-Job Safety Meeting	12/22/2015	03:00:00	USER					All HES personnel, rig crew, and company rep
Event	9	Start Job	Start Job	12/22/2015	03:17:23	USER					TD 1230', TP 1291', SJ 44.14', Mud 9.2, 13 1/2" OH, 9 5/8" 32.3# H-40 csg
Event	10	Prime Pumps	Prime Pumps	12/22/2015	03:18:47	USER	80	8.33	2.0	2.0	Fresh water
Event	11	Test Lines	Test Lines	12/22/2015	03:24:50	USER	3580				Pressure held well
Event	12	Pump Spacer	Pump H2O Spacer	12/22/2015	03:27:05	USER	212	8.33	4.0	20.0	Fresh water
Event	13	Pump Lead Cement	Pump Lead Cement	12/22/2015	03:35:19	USER	402	12.3	8.0	63.6	VariCem 150 sks, 12.3 ppg, 2.38 yield, 13.77 gal/sk
Event	14	Pump Tail Cement	Pump Tail Cement	12/22/2015	03:44:38	USER	411	12.8	8.0	65.8	VariCem 175 sks, 12.8 ppg, 2.11 yield, 11.78 gal/sk
Event	15	Shutdown	Shutdown/Wash up	12/22/2015	03:54:24	USER					Wash up on top of plug

Event	16	Drop Top Plug	Drop Top Plug	12/22/2015	03:58:22	USER					Plug launched
Event	17	Pump Displacement	Pump Displacement	12/22/2015	03:59:17	USER	611	8.33	10.0	92.5	Fresh water
Event	18	Slow Rate	Slow Rate	12/22/2015	04:11:35	USER	370	8.33	2.0	10.0	Good returns throughout job
Event	19	Bump Plug	Bump Plug	12/22/2015	04:13:37	USER	395				20 bbls cement to surface
Event	20	Check Floats	Check Floats	12/22/2015	04:15:24	USER	909				Floats held - 1/2 bbl flowback
Event	21	End Job	End Job	12/22/2015	04:17:02	USER					40 lbs sugar used, no add hours
Event	22	Pre-Rig Down Safety Meeting	Pre-Rig Down Safety Meeting	12/22/2015	04:30:00	USER					
Event	23	Rig-Down Equipment	Rig-Down Equipment	12/22/2015	04:45:00	USER					
Event	24	Pre-Convoy Safety Meeting	Pre-Convoy Safety Meeting	12/22/2015	05:45:00	USER					
Event	25	Crew Leave Location	Crew Leave Location	12/22/2015	06:00:00	USER					Thank you for using Halliburton - Ed Deussen and crew

WPX - RU 441-8 - 9 5/8" Surface



- | | | | | |
|---|-----------------------------|--------------------|---------------------|--------------------------------|
| ① Call Out | ⑥ Pre-Rig Up Safety Meeting | ⑪ Test Lines | ⑯ DropTop Plug | 21 End Job |
| ② Pre-Convoy Safety Meeting | ⑦ Rig-Up Equipment | ⑫ Pump H2O Spacer | ⑰ Pump Displacement | 22 Pre-Rig Down Safety Meeting |
| ③ Crew Leave Yard | ⑧ Pre-Job Safety Meeting | ⑬ Pump Lead Cement | ⑱ Slow Rate | 23 Rig-Down Equipment |
| ④ Arrive At Location | ⑨ Start Job | ⑭ Pump Tail Cement | ⑲ Bump Plug | 24 Pre-Convoy Safety Meeting |
| ⑤ Assessment Of Location Safety Meeting | ⑩ Prime Pumps | ⑮ Shutdown/Wash up | 20 Check Floats | 25 Crew Leave Location |

▼ **HALLIBURTON** | iCem® Service

Created: 2015-12-21 22:05:25, Version: 4.2.393

Edit

Customer: WPX ENERGY ROCKY MOUNTAIN LLC-EBUS

Job Date: 12/22/2015 3:37:06 AM

Well: FED RU 441-8

Representative: Robert Brown

Sales Order #: 903006311

Elite #1: Ed Deussen / John Keane

WPX - RU 441-8 - 9 5/8" Surface

