

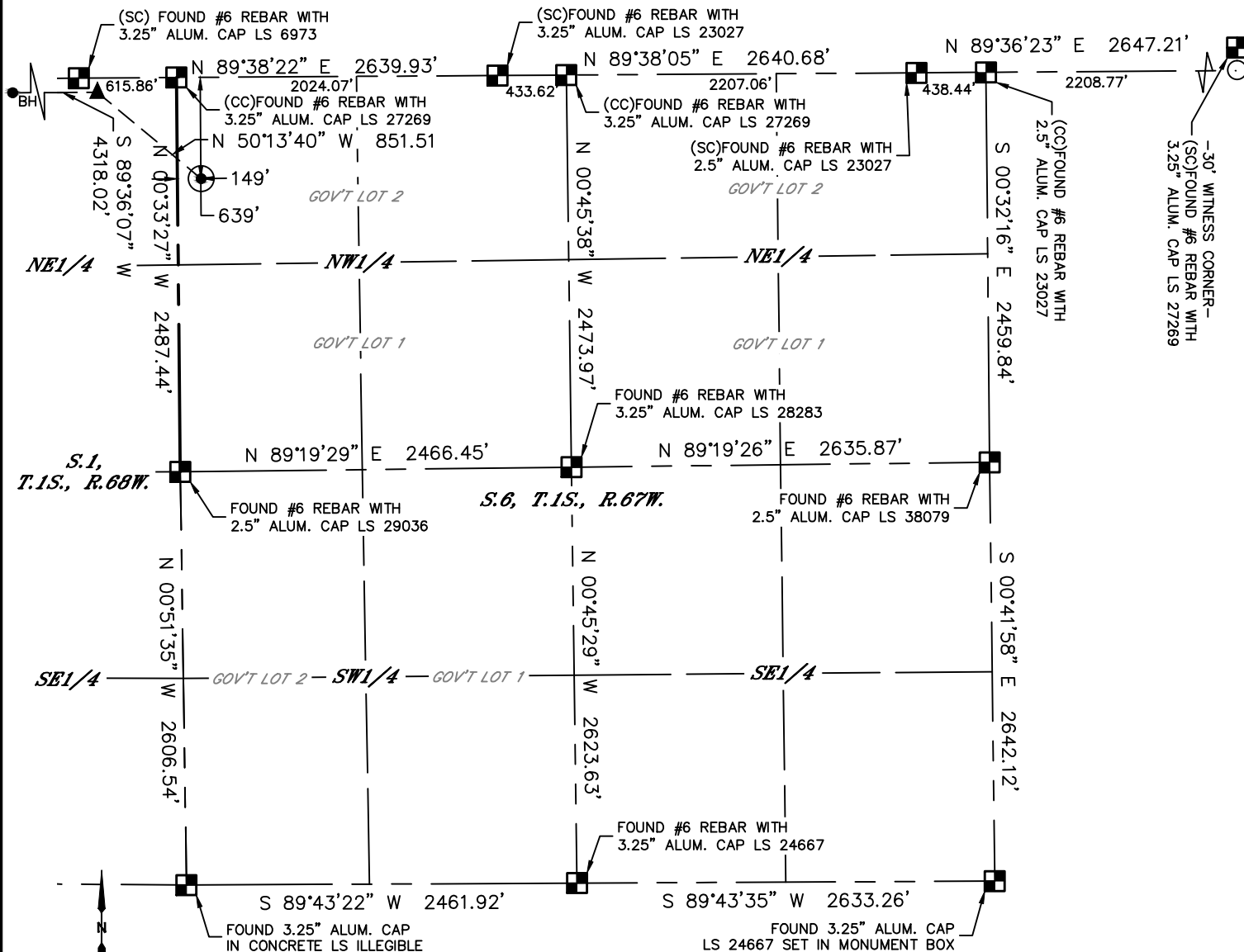


Lat40°, Inc. 6250 W. 10th Street, Unit 2, Greeley, CO 970-515-5294

WELL LOCATION CERTIFICATE

RIO-LA 6E-304

SECTION: 6
TOWNSHIP: 1S
RANGE: 67W
6TH. P.M.
ADAMS COUNTY, CO



| | | | | | | | | | |
|--|-----|-----|-----------|----------|------------|-------------------------|----------------|----------------------|-----------|
| CLIENT: PDC ENERGY, LLC | | | | | | LANDMAN: BARNEY HAMMOND | | | |
| INSTRUMENT OPERATOR: BRIAN ROTTINGHAUS | | | | | | SURVEY DATE: 12/29/2014 | | SURFACE USE: PASTURE | |
| SHL FOOTAGE | | | SHL LAT ° | | SHL LONG ° | SHL PDOP | SHL ELEV (FT.) | SHL 1/4/1/4 | SHL S-T-R |
| 639 | FNL | 149 | FWL | 39.99859 | -104.93980 | 2.1 | 5070 | NWNW | 6-1-67 |

| BHL FOOTAGE | | | | BHL LAT ° | BHL LONG ° | BHL S-T-R | EP LAT ° | EP LONG ° | EP S-T-R |
|-------------|-----|-----|-----|-----------|------------|-----------|----------|------------|----------|
| 90 | FNL | 500 | FWL | 40.00008 | -104.95753 | 1-1-68 | 40.00009 | -104.94212 | 1-1-68 |

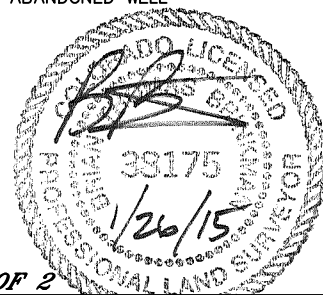
NOTE:

- 1) Bearings shown are Grid Bearings of the Colorado State Plane Coordinate System, North Zone, North American Datum 1983. The lineal dimensions as contained herein are based upon the "U.S. Survey Foot."
- 2) Distances to section lines measured at 90 degrees from said section lines.
- 3) Ground elevations are based on an observed GPS elevation (NAVD 1988 DATUM).
- 4) Latitude and Longitude shown are (NAD 83 DATUM).
- 5) IMPROVEMENTS: See LOCATION DRAWING for all visible improvements within 500' of oil and gas location.
- 6) This map does not represent a boundary survey.

| NEAREST CULTURAL ITEMS | |
|------------------------------------|----------|
| BUILDING | ±569' NE |
| BUILDING UNIT | ±654' NE |
| HIGH OCCUPANCY BUILDING UNIT | 5280'+ |
| DESIGNATED OUTSIDE ACTIVITY AREA | 5280'+ |
| PUBLIC ROAD (CR 13/COLORADO BLVD.) | ±291' SW |
| ABOVE GROUND UTILITY | ±624' SW |
| RAILROAD | ±534' SW |
| PROPERTY LINE | ±59' E |

LEGEND

- = ALIQUOT MONUMENT AS DESCRIBED
- = CALCULATED POSITION
- = SURFACE HOLE LOCATION (SHL)
- ▲ = ENTRY POINT LOCATION (EP)
- BH = BOTTOM HOLE LOCATION (BHL)
- ⊕ = EXISTING WELL
- ⊖ = ABANDONED WELL



SHEET 1 OF 2

Brian T. Brinkman—On behalf of Lat40°, Inc.
Colorado Licensed Professional Land Surveyor No. 38175
DATE: 01/26/2015
PROJECT#: 2014158

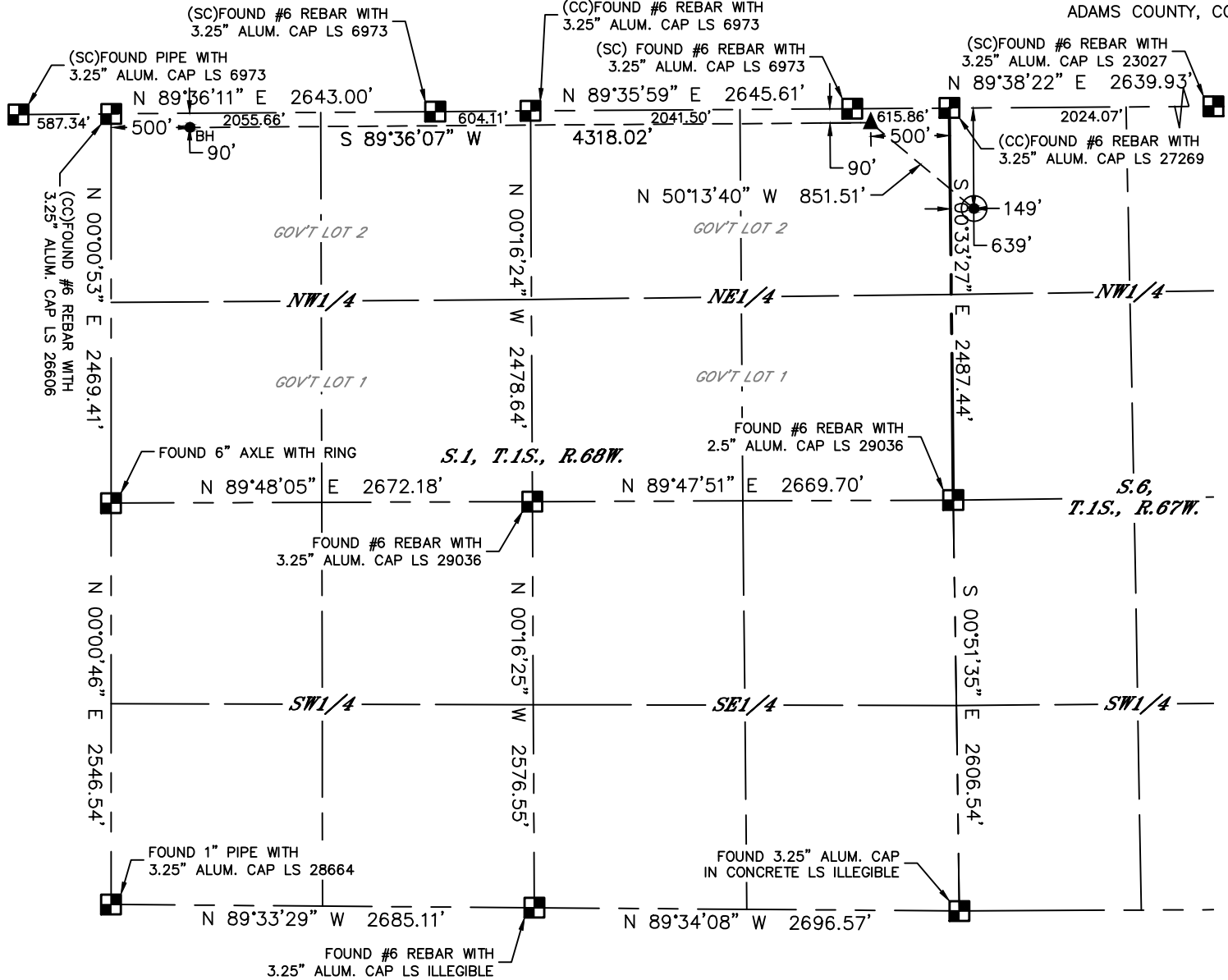


Lat40°, Inc. 6250 W. 10th Street, Unit 2, Greeley, CO 970-515-5294

WELL LOCATION CERTIFICATE

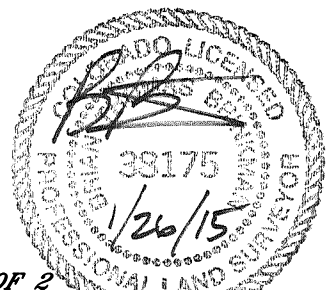
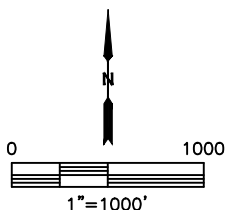
RIO-LA 6E-304

SECTION: 6
TOWNSHIP: 1S
RANGE: 67W
6TH. P.M.
ADAMS COUNTY, CO



LEGEND

- = ALIQUOT MONUMENT AS DESCRIBED
- = CALCULATED POSITION
- ⊙ = SURFACE HOLE LOCATION (SHL)
- ▲ = ENTRY POINT LOCATION (EP)
- = BOTTOM HOLE LOCATION (BHL)
- ⊕ = EXISTING WELL
- ⊖ = ABANDONED WELL



SHEET 2 OF 2

Brian T. Brinkman—On behalf of Lat40°, Inc.
Colorado Licensed Professional Land Surveyor No. 38175
DATE: 01/26/2015
PROJECT#: 2014158

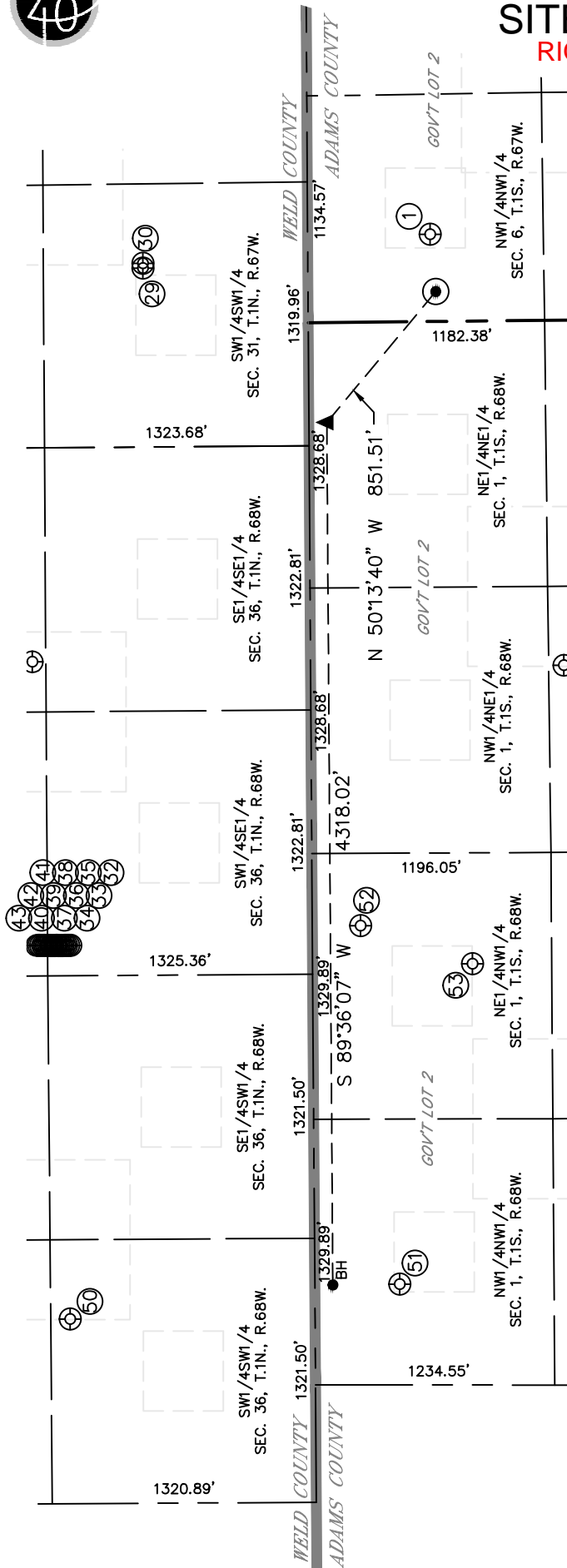


Lat40°, Inc. 6250 W. 10th Street, Unit 2, Greeley, CO 970-515-5294

SITE SKETCH

RIO-LA 6E-304

SECTION: 6
TOWNSHIP: 1S
RANGE: 67W
6TH. P.M.
ADAMS COUNTY, CO



| WELL NO. | WELL NAME | SHL FOOTAGE | | | | | SHL LAT° | SHL LONG° | PDOP | ELEV (FT.) | 1/4/1/4 |
|----------|------------------------------|-------------|-----|------|-----|----------|------------|-----------|------|------------|---------|
| 1 | SACK 11-6 | 612 | FNL | 437 | FWL | 39.99866 | -104.93877 | 2.8 | 5067 | NWNW | |
| 29 | SACK STATE 30C-30HZ | 826 | FSL | 895 | FWL | 40.00261 | -104.93935 | 2.1 | 5067 | SWSW | |
| 30 | SACK 4N-30HZ | 826 | FSL | 919 | FWL | 40.00261 | -104.93926 | 2.1 | 5067 | SWSW | |
| 32 | NORTHGLENN STATE 36-36 | 1209 | FSL | 2491 | FEL | 40.00365 | -104.95144 | 2.2 | 5116 | SWSE | |
| 33 | NORTHGLENN STATE 14-36 | 1221 | FSL | 2492 | FEL | 40.00369 | -104.95144 | 2.2 | 5117 | SWSE | |
| 34 | NORTHGLENN STATE 15-36 | 1231 | FSL | 2492 | FEL | 40.00371 | -104.95144 | 2.6 | 5117 | SWSE | |
| 35 | NORTHGLENN STATE 13-36 | 1241 | FSL | 2492 | FEL | 40.00374 | -104.95144 | 2.5 | 5117 | SWSE | |
| 36 | NORTHGLENN STATE 33-36 | 1251 | FSL | 2492 | FEL | 40.00377 | -104.95144 | 2.7 | 5117 | SWSE | |
| 37 | NORTHGLENN STATE 37-36 | 1261 | FSL | 2492 | FEL | 40.00380 | -104.95144 | 3.0 | 5117 | SWSE | |
| 38 | NORTHGLENN STATE 23-36 | 1271 | FSL | 2491 | FEL | 40.00382 | -104.95144 | 2.3 | 5117 | SWSE | |
| 39 | NORTHGLENN STATE 16-36 | 1280 | FSL | 2491 | FEL | 40.00385 | -104.95144 | 2.5 | 5117 | SWSE | |
| 40 | NORTHGLENN STATE 19-36 | 1290 | FSL | 2491 | FEL | 40.00388 | -104.95144 | 2.5 | 5117 | SWSE | |
| 41 | NORTHGLENN STATE 39-36 | 1300 | FSL | 2491 | FEL | 40.00390 | -104.95144 | 3.0 | 5117 | SWSE | |
| 42 | NORTHGLENN STATE 12-36 | 1310 | FSL | 2491 | FEL | 40.00393 | -104.95144 | 2.7 | 5117 | SWSE | |
| 43 | NORTHGLENN STATE 9-36 | 1321 | FSL | 2491 | FEL | 40.00396 | -104.95143 | 3.5 | 5117 | SWSE | |
| 50 | (HSR) NORTHGLENN STATE 13-36 | 1225 | FSL | 924 | FWL | 40.00369 | -104.95811 | 2.2 | 5105 | SWSW | |
| 51 | GASPAR 11-1 | 425 | FNL | 504 | FWL | 39.99917 | -104.95752 | 2.8 | 5091 | NWNW | |
| 52 | STERKEL 1 | 240 | FNL | 2299 | FWL | 39.99968 | -104.95112 | 3.4 | 5092 | NENW | |
| 53 | STERKEL 12-1 | 800 | FNL | 2108 | FWL | 39.99814 | -104.95181 | 2.8 | 5077 | NENW | |



DATE: 01/26/2015
PROJECT#: 2014158