

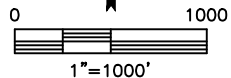
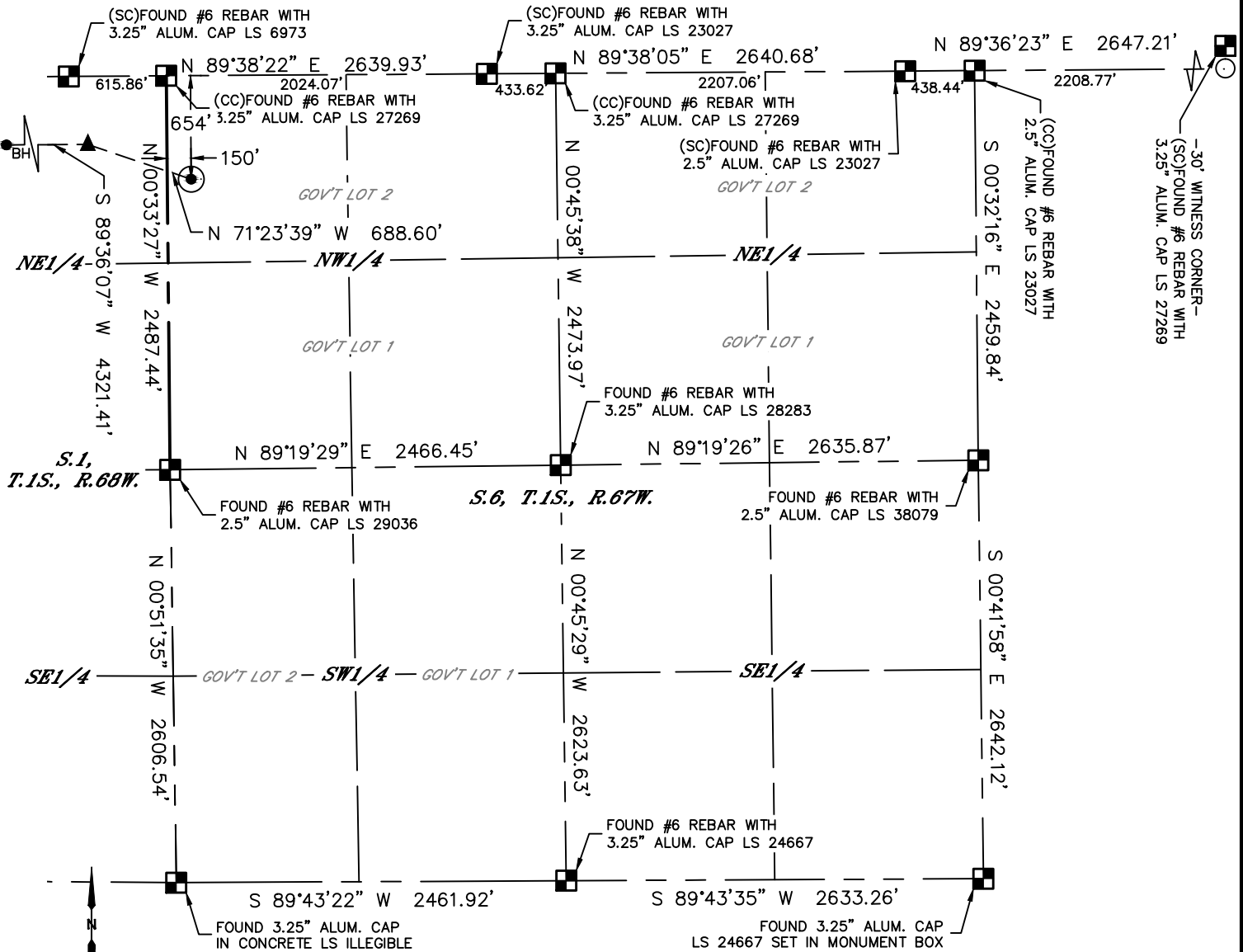


Lat40°, Inc. 6250 W. 10th Street, Unit 2, Greeley, CO 970-515-5294

WELL LOCATION CERTIFICATE

RIO-LA 6E-234

SECTION: 6
TOWNSHIP: 1S
RANGE: 67W
6TH. P.M.
ADAMS COUNTY, CO



CLIENT: PDC ENERGY, LLC						LANDMAN: BARNEY HAMMOND			
INSTRUMENT OPERATOR: CHASE MILLER						SURVEY DATE: 5/28/2015		SURFACE USE: PASTURE	
SHL FOOTAGE			SHL LAT °		SHL LONG °	SHL PDOP	SHL ELEV (FT.)	SHL 1/4/1/4	SHL S-T-R
654	FNL	150	FWL	39.99855	-104.93979	1.7	5070	NWNW	6-1-67

BHL FOOTAGE				BHL LAT °	BHL LONG °	BHL S-T-R	EP LAT °	EP LONG °	EP S-T-R
430	FNL	500	FWL	39.99915	-104.95754	1-1-68	39.99916	-104.94212	1-1-68

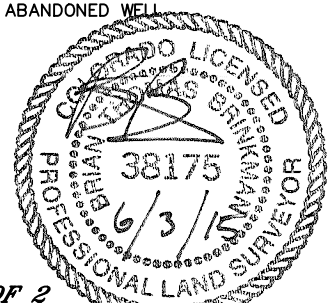
NOTE:

- Bearings shown are Grid Bearings of the Colorado State Plane Coordinate System, North Zone, North American Datum 1983. The lineal dimensions as contained herein are based upon the "U.S. Survey Foot."
- Distances to section lines measured at 90 degrees from said section lines.
- Ground elevations are based on an observed GPS elevation (NAVD 1988 DATUM).
- Latitude and Longitude shown are (NAD 83 DATUM).
- IMPROVEMENTS: See LOCATION DRAWING for all visible improvements within 500' of oil and gas location.
- This map does not represent a boundary survey.

NEAREST CULTURAL ITEMS	
BUILDING	±575' NE
BUILDING UNIT	±662' NE
HIGH OCCUPANCY BUILDING UNIT	5280'+
DESIGNATED OUTSIDE ACTIVITY AREA	5280'+
PUBLIC ROAD (CR 13/COLORADO BLVD.)	±291' SW
ABOVE GROUND UTILITY	±611' SW
RAILROAD	±534' SW
PROPERTY LINE	±57' E

LEGEND

- = ALIQUOT MONUMENT AS DESCRIBED
- = CALCULATED POSITION
- = SURFACE HOLE LOCATION (SHL)
- ▲ = ENTRY POINT LOCATION (EP)
- BH = BOTTOM HOLE LOCATION (BHL)
- ⊕ = EXISTING WELL
- ⊖ = ABANDONED WELL



SHEET 1 OF 2

Brian T. Brinkman—On behalf of Lat40°, Inc.
Colorado Licensed Professional Land Surveyor No. 38175
DATE: 6/3/2015
PROJECT#: 2014158

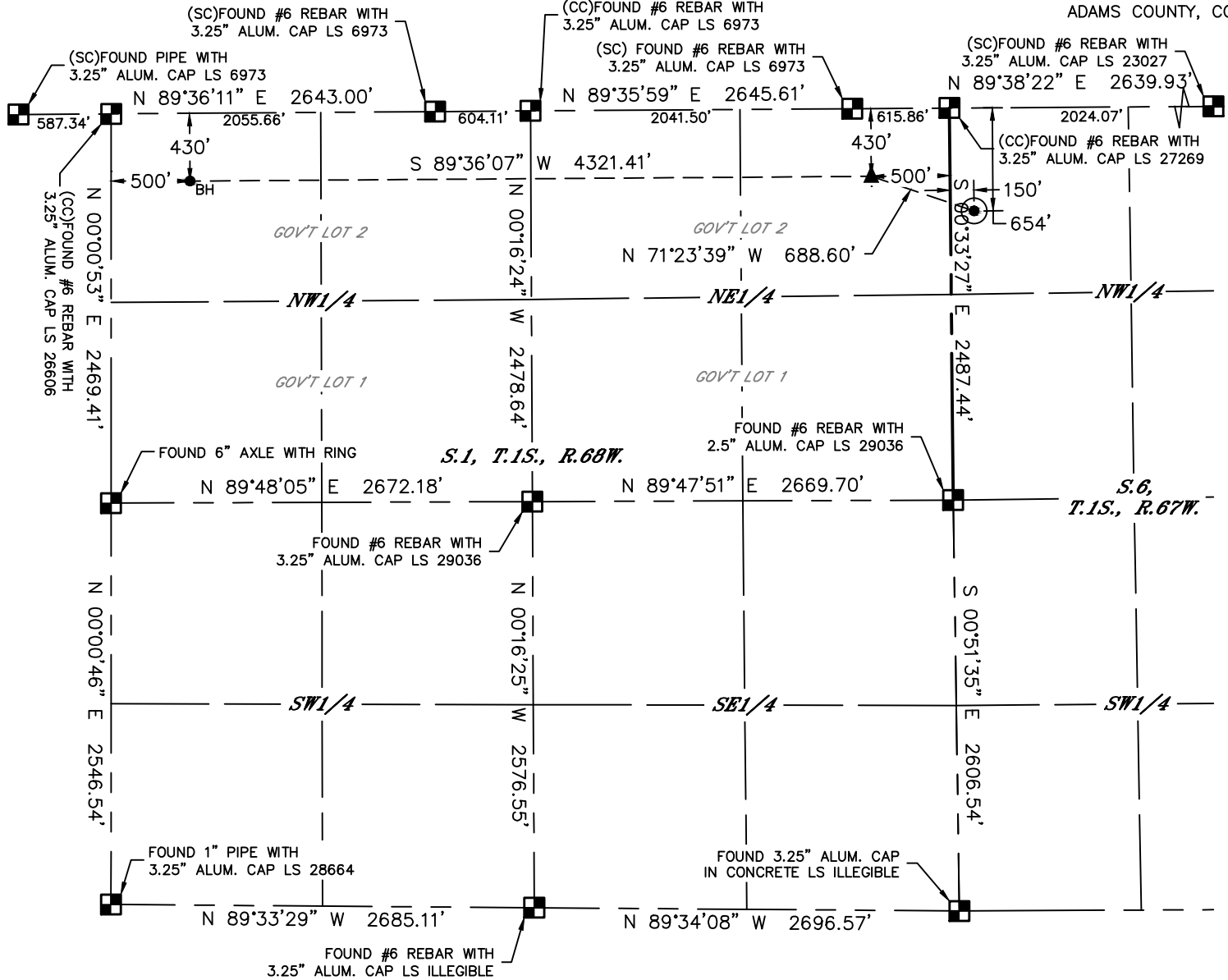


Lat40°, Inc. 6250 W. 10th Street, Unit 2, Greeley, CO 970-515-5294

WELL LOCATION CERTIFICATE

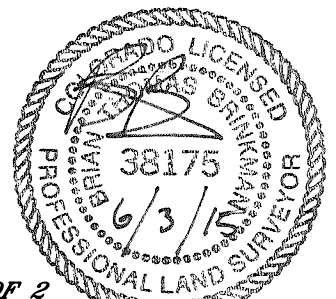
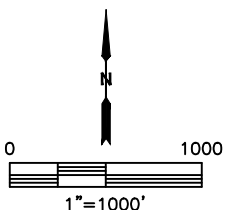
RIO-LA 6E-234

SECTION: 6
TOWNSHIP: 1S
RANGE: 67W
6TH. P.M.
ADAMS COUNTY, CO



LEGEND

- = ALIQUOT MONUMENT AS DESCRIBED
- = CALCULATED POSITION
- = SURFACE HOLE LOCATION (SHL)
- ▲ = ENTRY POINT LOCATION (EP)
- _{BH} = BOTTOM HOLE LOCATION (BHL)
- ⊙ = EXISTING WELL
- ⊙ = ABANDONED WELL



SHEET 2 OF 2

Brian T. Brinkman—On behalf of Lat40°, Inc.
Colorado Licensed Professional Land Surveyor No. 38175
DATE: 6/3/2015
PROJECT#: 2014158

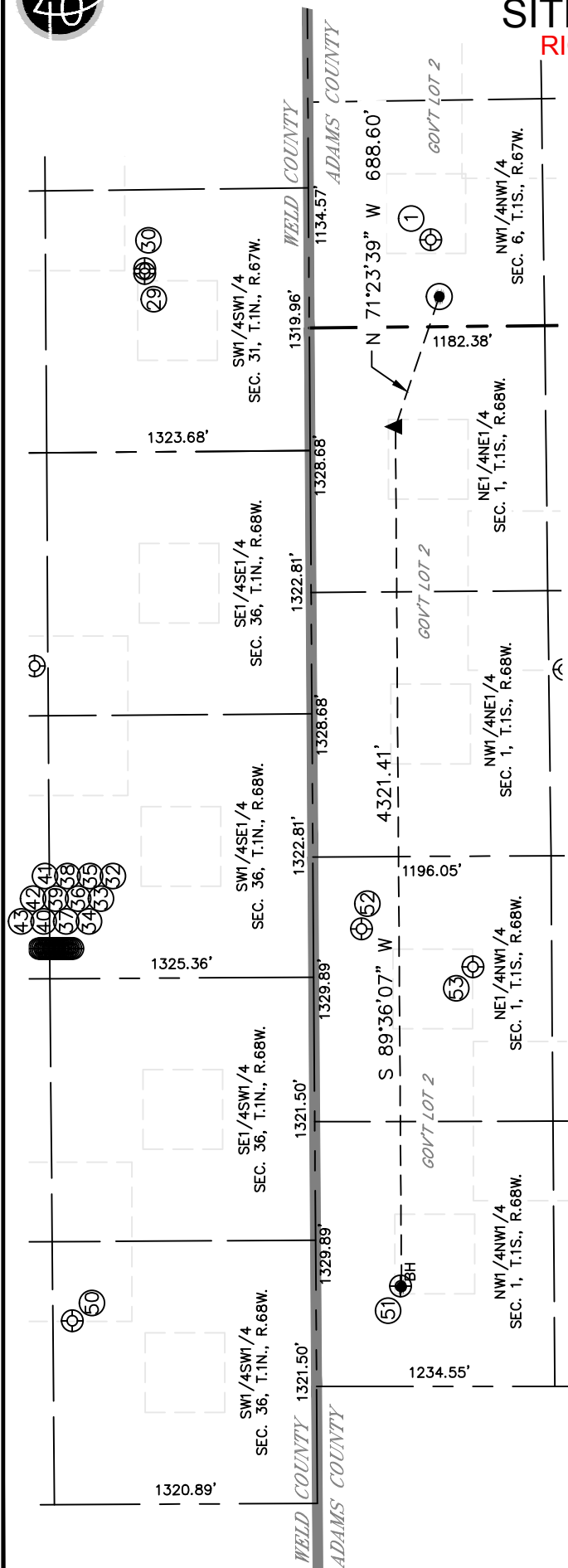


Lat40°, Inc. 6250 W. 10th Street, Unit 2, Greeley, CO 970-515-5294

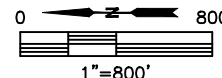
SITE SKETCH

RIO-LA 6E-234

SECTION: 6
TOWNSHIP: 1S
RANGE: 67W
6TH. P.M.
ADAMS COUNTY, CO



WELL NO.	WELL NAME	SHL FOOTAGE				SHL LAT°	SHL LONG°	PDOP	ELEV (FT.)	1/4/1/4
1	SACK 11-6	612	FNL	437	FWL	39.99866	-104.93877	2.8	5067	NWNW
29	SACK STATE 30C-30HZ	826	FSL	895	FWL	40.00261	-104.93935	2.1	5067	SWSW
30	SACK 4N-30HZ	826	FSL	919	FWL	40.00261	-104.93926	2.1	5067	SWSW
32	NORTHGLENN STATE 36-36	1209	FSL	2491	FEL	40.00365	-104.95144	2.2	5116	SWSE
33	NORTHGLENN STATE 14-36	1221	FSL	2492	FEL	40.00369	-104.95144	2.2	5117	SWSE
34	NORTHGLENN STATE 15-36	1231	FSL	2492	FEL	40.00371	-104.95144	2.6	5117	SWSE
35	NORTHGLENN STATE 13-36	1241	FSL	2492	FEL	40.00374	-104.95144	2.5	5117	SWSE
36	NORTHGLENN STATE 33-36	1251	FSL	2492	FEL	40.00377	-104.95144	2.7	5117	SWSE
37	NORTHGLENN STATE 37-36	1261	FSL	2492	FEL	40.00380	-104.95144	3.0	5117	SWSE
38	NORTHGLENN STATE 23-36	1271	FSL	2491	FEL	40.00382	-104.95144	2.3	5117	SWSE
39	NORTHGLENN STATE 16-36	1280	FSL	2491	FEL	40.00385	-104.95144	2.5	5117	SWSE
40	NORTHGLENN STATE 19-36	1290	FSL	2491	FEL	40.00388	-104.95144	2.5	5117	SWSE
41	NORTHGLENN STATE 39-36	1300	FSL	2491	FEL	40.00390	-104.95144	3.0	5117	SWSE
42	NORTHGLENN STATE 12-36	1310	FSL	2491	FEL	40.00393	-104.95144	2.7	5117	SWSE
43	NORTHGLENN STATE 9-36	1321	FSL	2491	FEL	40.00396	-104.95143	3.5	5117	SWSE
50	(HSR) NORTHGLENN STATE 13-36	1225	FSL	924	FWL	40.00369	-104.95811	2.2	5105	SWSW
51	GASPAR 11-1	425	FNL	504	FWL	39.99917	-104.95752	2.8	5091	NWNW
52	STERKEL 1	240	FNL	2299	FWL	39.99968	-104.95112	3.4	5092	NENW
53	STERKEL 12-1	800	FNL	2108	FWL	39.99814	-104.95181	2.8	5077	NENW



DATE: 6/3/2015
PROJECT#: 2014158