

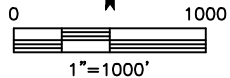
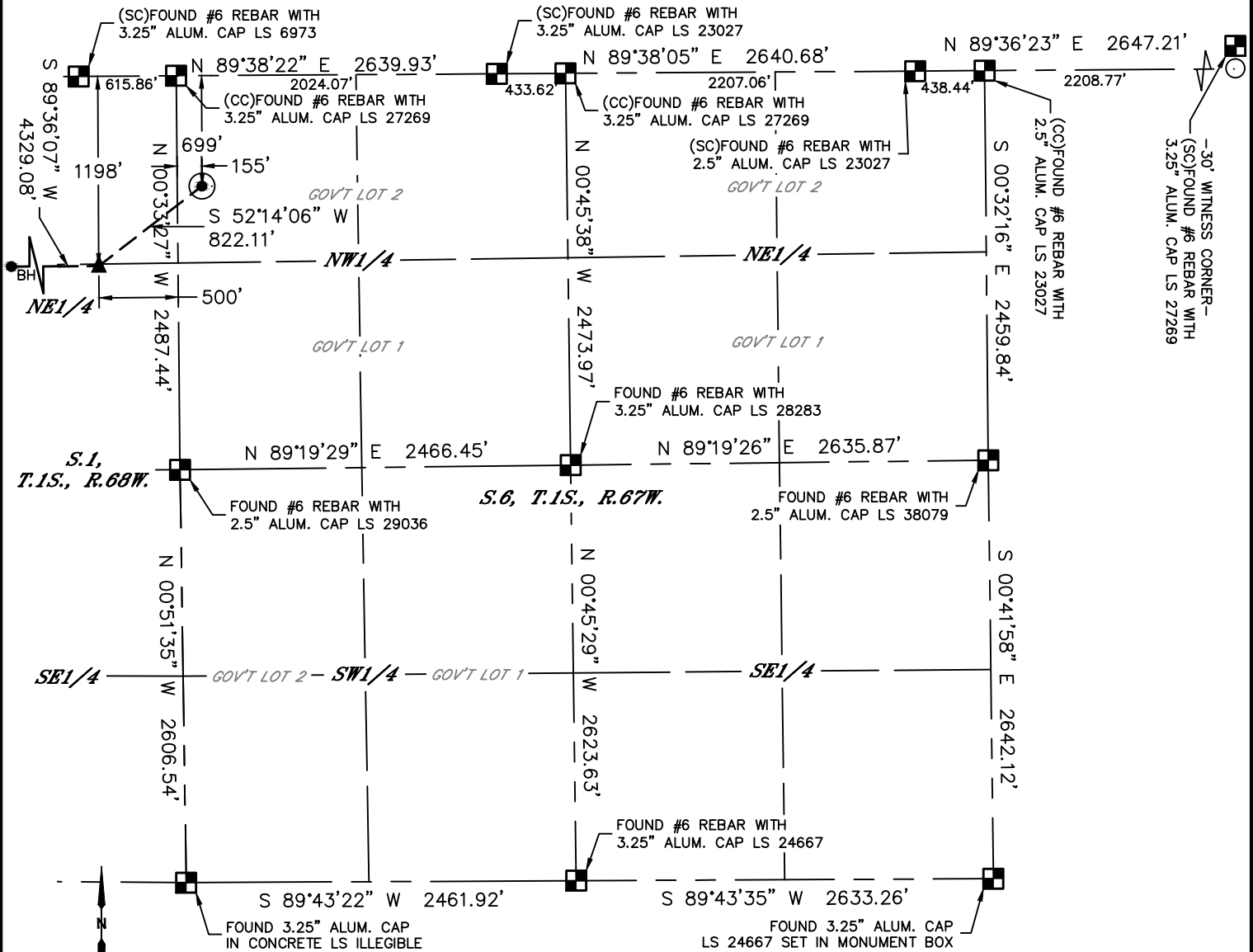


Lat40°, Inc. 6250 W. 10th Street, Unit 2, Greeley, CO 970-515-5294

# WELL LOCATION CERTIFICATE

RIO-LA 6F-204

SECTION: 6  
TOWNSHIP: 1S  
RANGE: 67W  
6TH. P.M.  
ADAMS COUNTY, CO



CLIENT: PDC ENERGY, LLC						LANDMAN: BARNEY HAMMOND			
INSTRUMENT OPERATOR: CHASE MILLER						SURVEY DATE: 5/28/2015		SURFACE USE: PASTURE	
SHL FOOTAGE				SHL LAT °	SHL LONG °	SHL PDOP	SHL ELEV (FT.)	SHL 1/4/1/4	SHL S-T-R
699	FNL	155	FWL	39.99842	-104.93978	2.1	5070	NWNW	6-1-67

BHL FOOTAGE				BHL LAT °	BHL LONG °	BHL S-T-R	EP LAT °	EP LONG °	EP S-T-R
1198	FNL	500	FWL	39.99704	-104.95756	1-1-68	39.99705	-104.94211	1-1-68

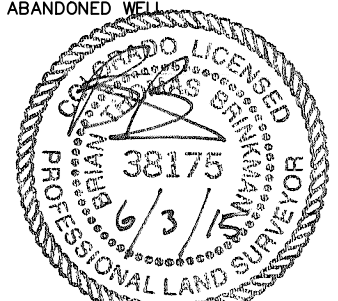
## NOTE:

- 1) Bearings shown are Grid Bearings of the Colorado State Plane Coordinate System, North Zone, North American Datum 1983. The lineal dimensions as contained herein are based upon the "U.S. Survey Foot."
- 2) Distances to section lines measured at 90 degrees from said section lines.
- 3) Ground elevations are based on an observed GPS elevation (NAVD 1988 DATUM).
- 4) Latitude and Longitude shown are (NAD 83 DATUM).
- 5) IMPROVEMENTS: See LOCATION DRAWING for all visible improvements within 500' of oil and gas location.
- 6) This map does not represent a boundary survey.

NEAREST CULTURAL ITEMS	
BUILDING	±592' NE
BUILDING UNIT	±688' NE
HIGH OCCUPANCY BUILDING UNIT	5280'+
DESIGNATED OUTSIDE ACTIVITY AREA	5280'+
PUBLIC ROAD (CR 13/COLORADO BLVD.)	±291' SW
ABOVE GROUND UTILITY	±571' SW
RAILROAD	±534' SW
PROPERTY LINE	±53' E

## LEGEND

- = ALIQUOT MONUMENT AS DESCRIBED
- = CALCULATED POSITION
- = SURFACE HOLE LOCATION (SHL)
- ▲ = ENTRY POINT LOCATION (EP)
- BH = BOTTOM HOLE LOCATION (BHL)
- ⊕ = EXISTING WELL
- ⊖ = ABANDONED WELL



Brian T. Brinkman—On behalf of Lat40°, Inc.  
Colorado Licensed Professional Land Surveyor No. 38175  
DATE: 6/3/2015  
PROJECT#: 2014158

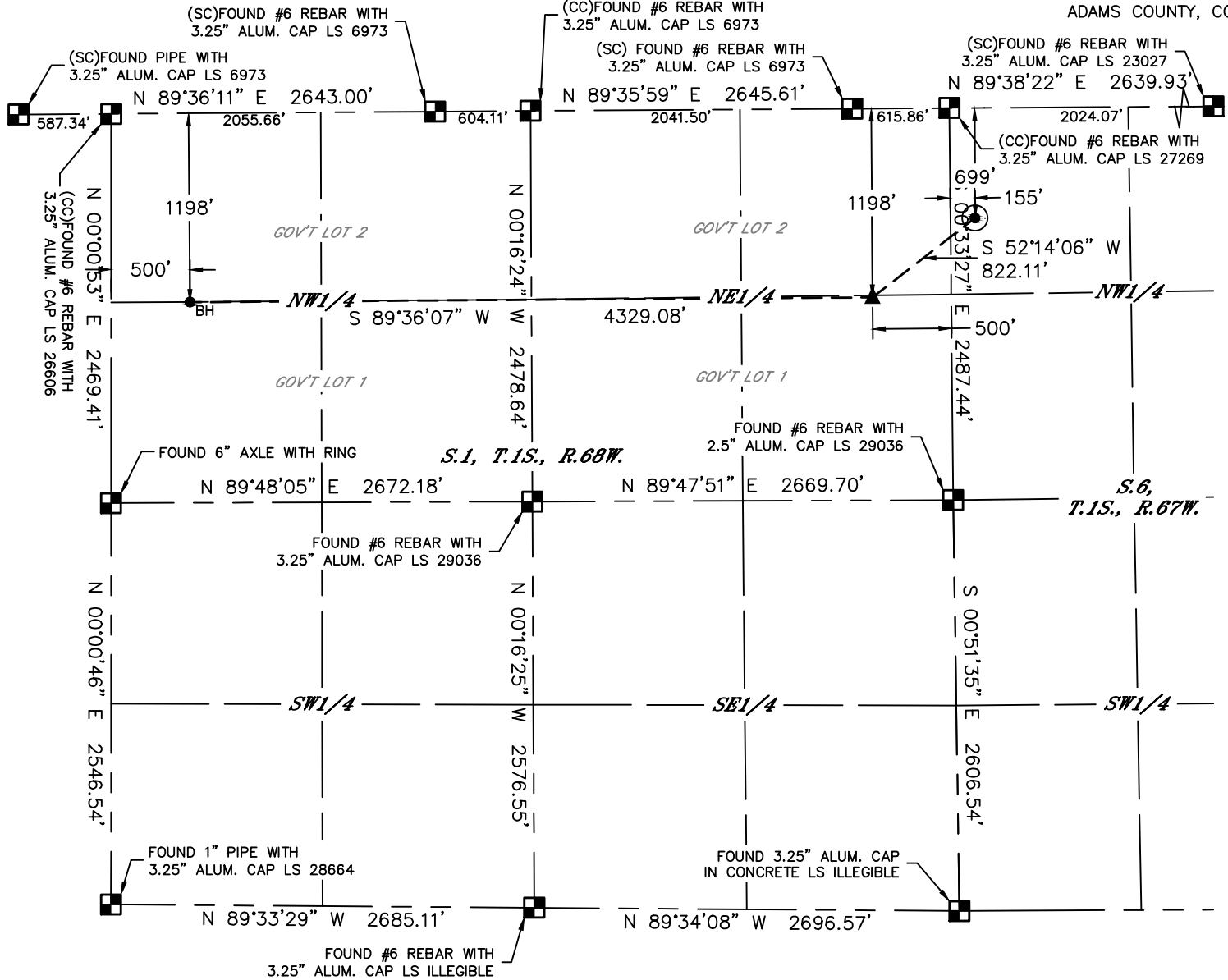


Lat40°, Inc. 6250 W. 10th Street, Unit 2, Greeley, CO 970-515-5294

# WELL LOCATION CERTIFICATE

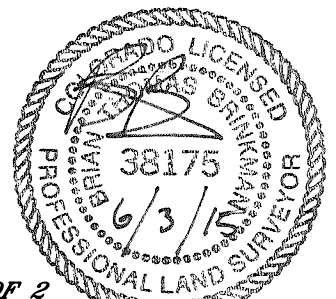
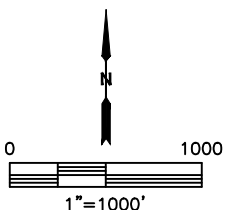
RIO-LA 6F-204

SECTION: 6  
TOWNSHIP: 1S  
RANGE: 67W  
6TH. P.M.  
ADAMS COUNTY, CO



## LEGEND

- = ALIQUOT MONUMENT AS DESCRIBED
- = CALCULATED POSITION
- = SURFACE HOLE LOCATION (SHL)
- ▲ = ENTRY POINT LOCATION (EP)
- = BOTTOM HOLE LOCATION (BHL)
- ⊙ = EXISTING WELL
- ⊙ = ABANDONED WELL



SHEET 2 OF 2

Brian T. Brinkman—On behalf of Lat40°, Inc.  
Colorado Licensed Professional Land Surveyor No. 38175  
DATE: 6/3/2015  
PROJECT#: 2014158

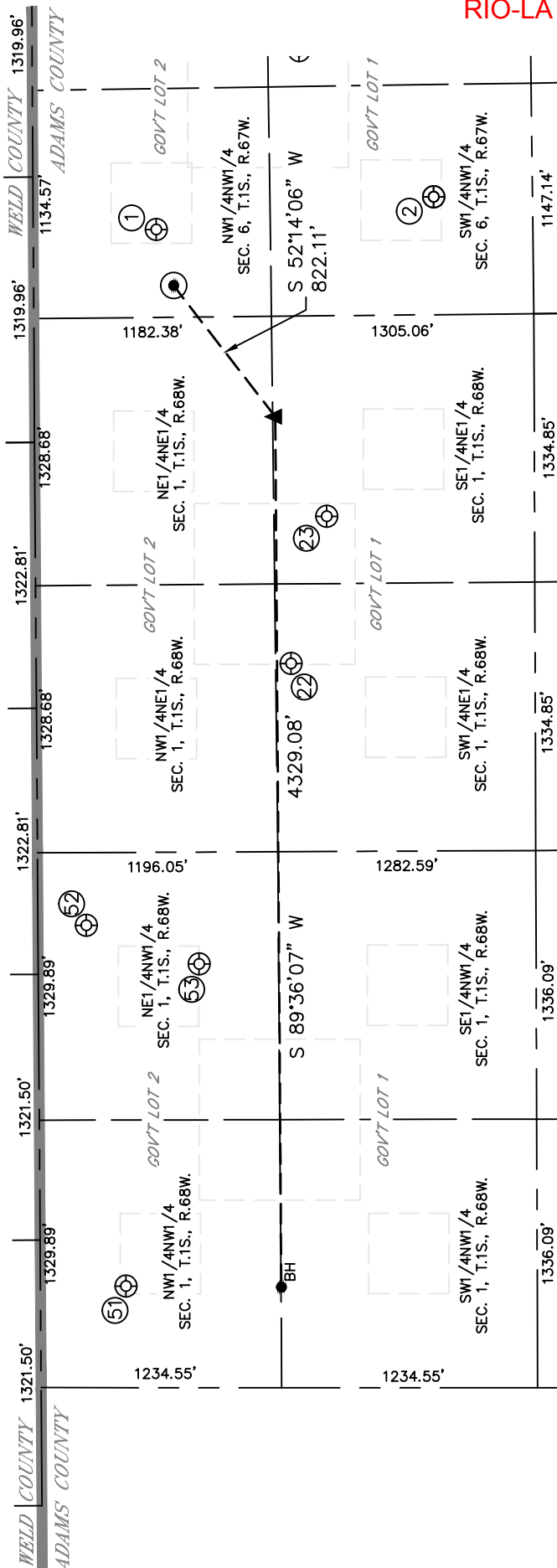


Lat40°, Inc. 6250 W. 10th Street, Unit 2, Greeley, CO 970-515-5294

# SITE SKETCH

RIO-LA 6F-204

SECTION: 6  
TOWNSHIP: 1S  
RANGE: 67W  
6TH. P.M.  
ADAMS COUNTY, CO



WELL NO.	WELL NAME	SHL FOOTAGE			SHL LAT°	SHL LONG°	PDOP	ELEV (FT.)	1/4/1/4
		FNL	FNL	FNL					
1	SACK 11-6	612	437	FWL	39.99866	-104.93877	2.8	5067	NWNW
2	SACK 12-6	1992	FNL	FWL	39.99487	-104.93822	2.7	5054	SWNW
22	BEISEL UNIT 1	1268	FNL	FEL	39.99686	-104.94649	2.2	5077	SWNE
23	BEISEL 42-1	1450	FNL	FEL	39.99636	-104.94388	2.4	5071	SENE
51	GASPAR 11-1	425	FNL	FWL	39.99917	-104.95752	2.8	5091	NWNW
52	STERKEL 1	240	FNL	FWL	39.99968	-104.95112	3.4	5092	NENW
53	STERKEL 12-1	800	FNL	FWL	39.99814	-104.95181	2.8	5077	NENW



DATE: 6/3/2015  
PROJECT#: 2014158