

BONANZA CREEK ENERGY INC.

WELD COUNTY, COLORADO (NAD 83)

SW SW SEC. 36 T5N R63W 6th P.M.

NORTH PLATTE Y-E-35HNC

ORIGINAL WELLBORE

11 November, 2015

Plan: PROPOSAL #2

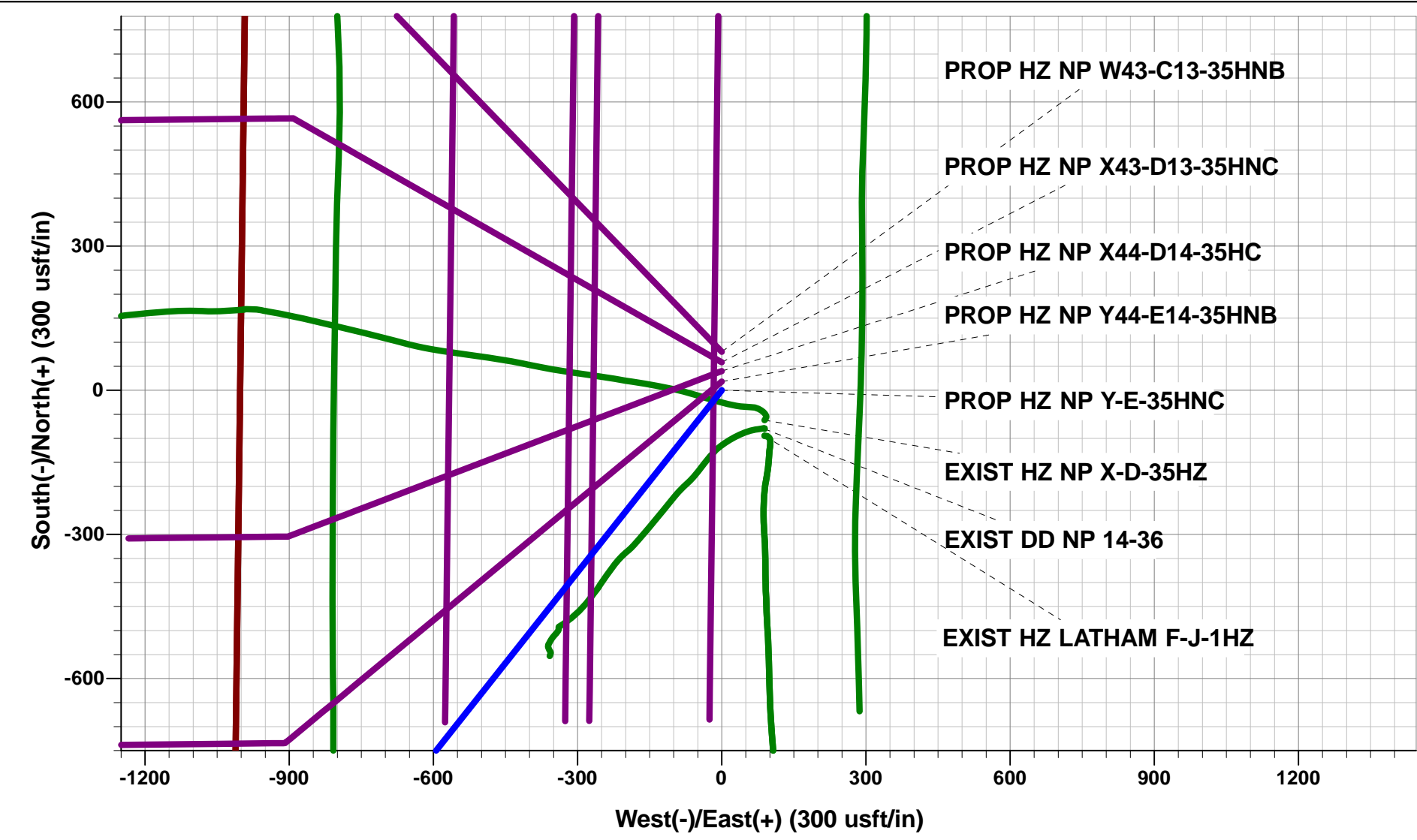




Project: WELD COUNTY, COLORADO (NAD 83)
Site: SW SW SEC. 36 T5N R63W 6th P.M.
Well: NORTH PLATTE Y-E-35HNC
Wellbore: ORIGINAL WELLBORE
Design: PROPOSAL #2

ANNOTATIONS									
TVD	MD	Inc	Azi	+N/-S	+E/-W	VSect	Dep	Annotation	
1500.0	1500.0	0.00	0.00	0.0	0.0	0.0	0.0	START NUDDGE (2°/100ft BUR)	
2758.3	2802.7	26.05	218.40	-228.1	-180.8	224.1	291.1	EOB TO 26.05° INC	
4577.4	4827.6	26.05	218.40	-925.1	-733.3	908.6	1180.5	END OF TANGENT	
5835.7	6130.3	0.00	218.40	-1153.3	-914.1	1132.6	1471.6	EOD TO VERTICAL	
5865.7	6160.3	0.00	0.00	-1153.3	-914.1	1132.6	1471.6	KOP (12°/100ft BUR)	
6326.9	6785.3	75.00	269.38	-1157.1	-1267.9	1479.6	1825.5	START OF TANGENT	
6352.8	6885.3	75.00	269.38	-1158.2	-1364.5	1574.3	1922.1	END OF TANGENT	
6369.0	7010.3	90.00	269.38	-1159.5	-1488.1	1695.5	2045.6	7" ICP - NP Y-E-35HNC	
6369.0	11230.9	90.00	269.38	-1205.2	-5708.4	5834.3	6266.2	BHL - NP Y-E-35HNC	

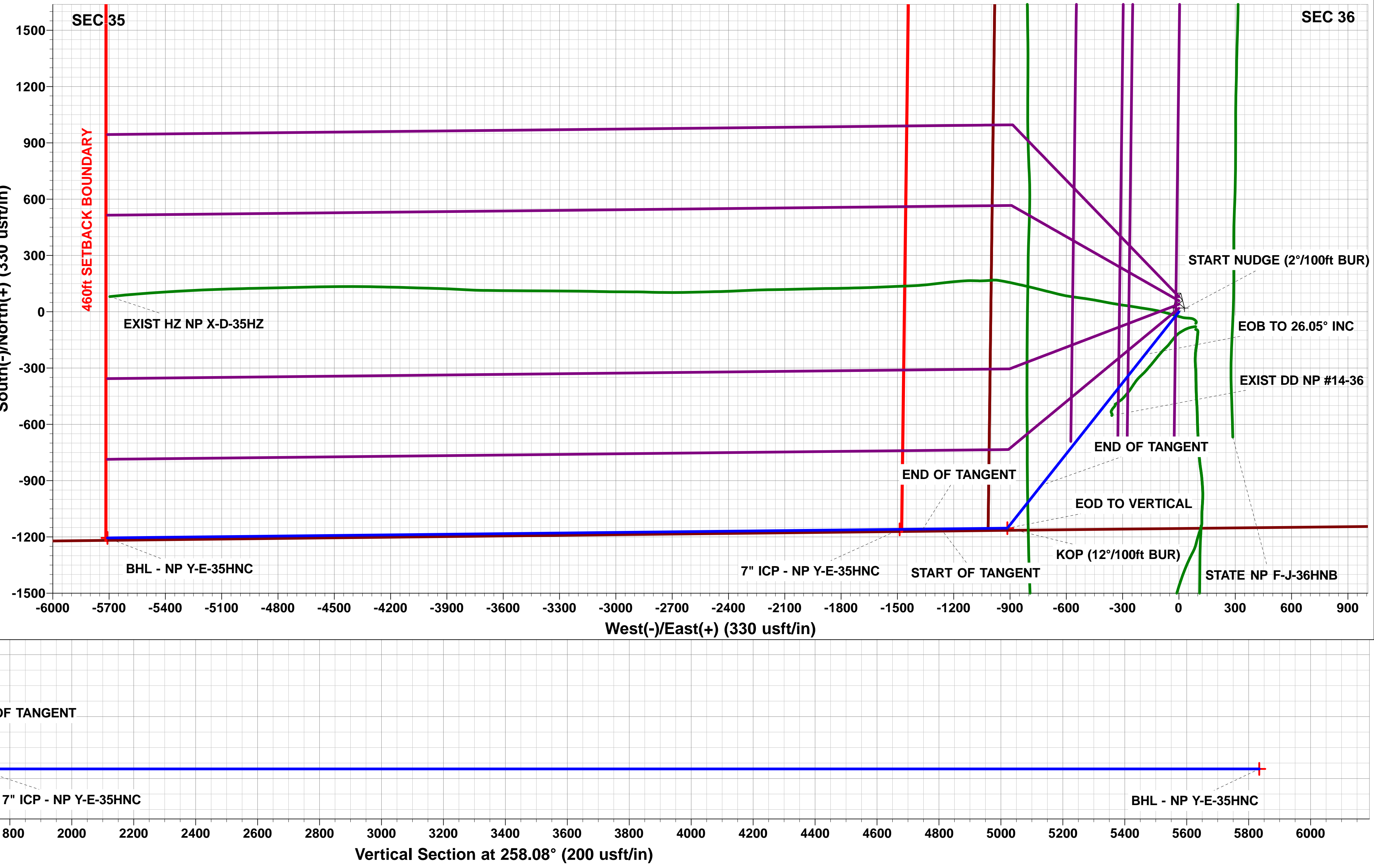
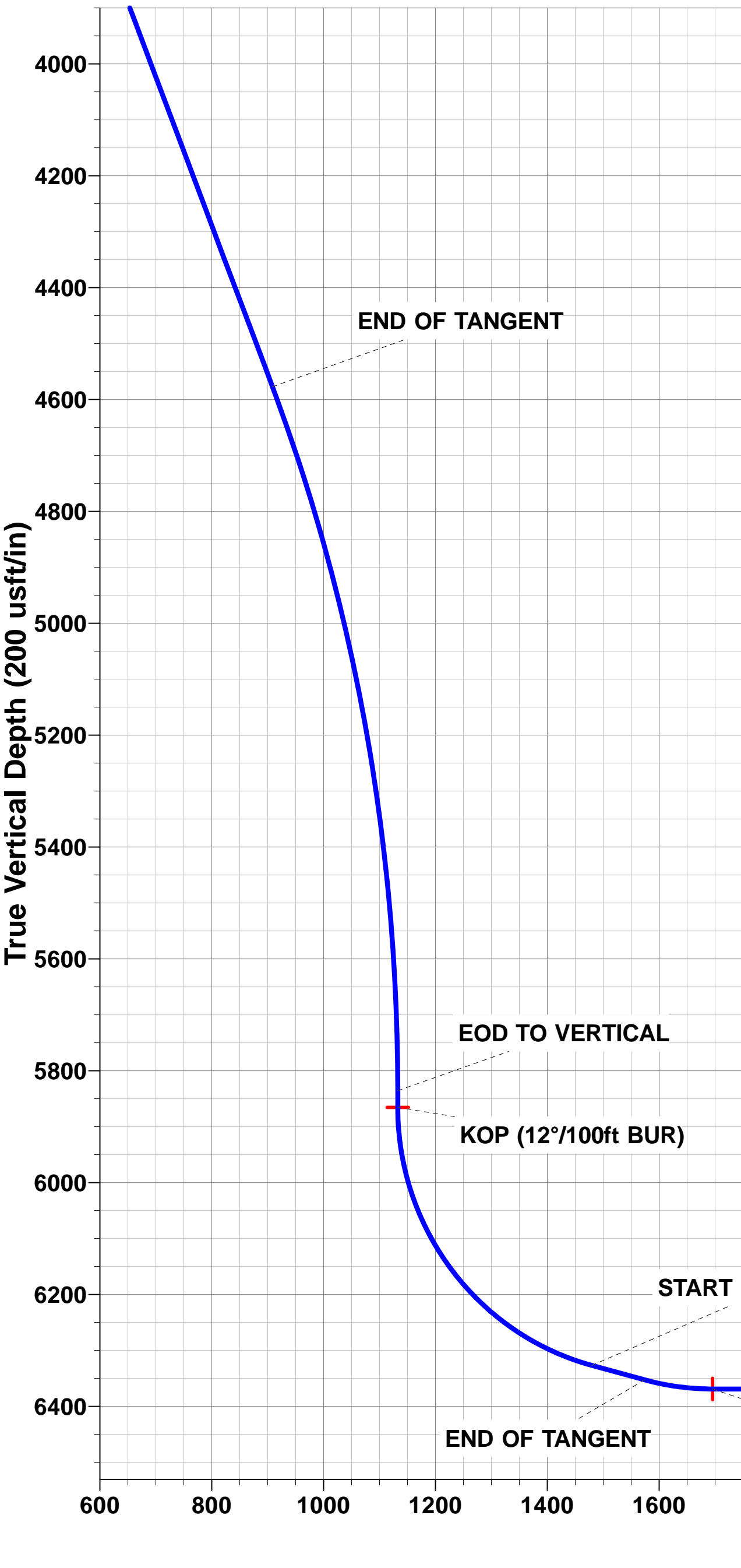
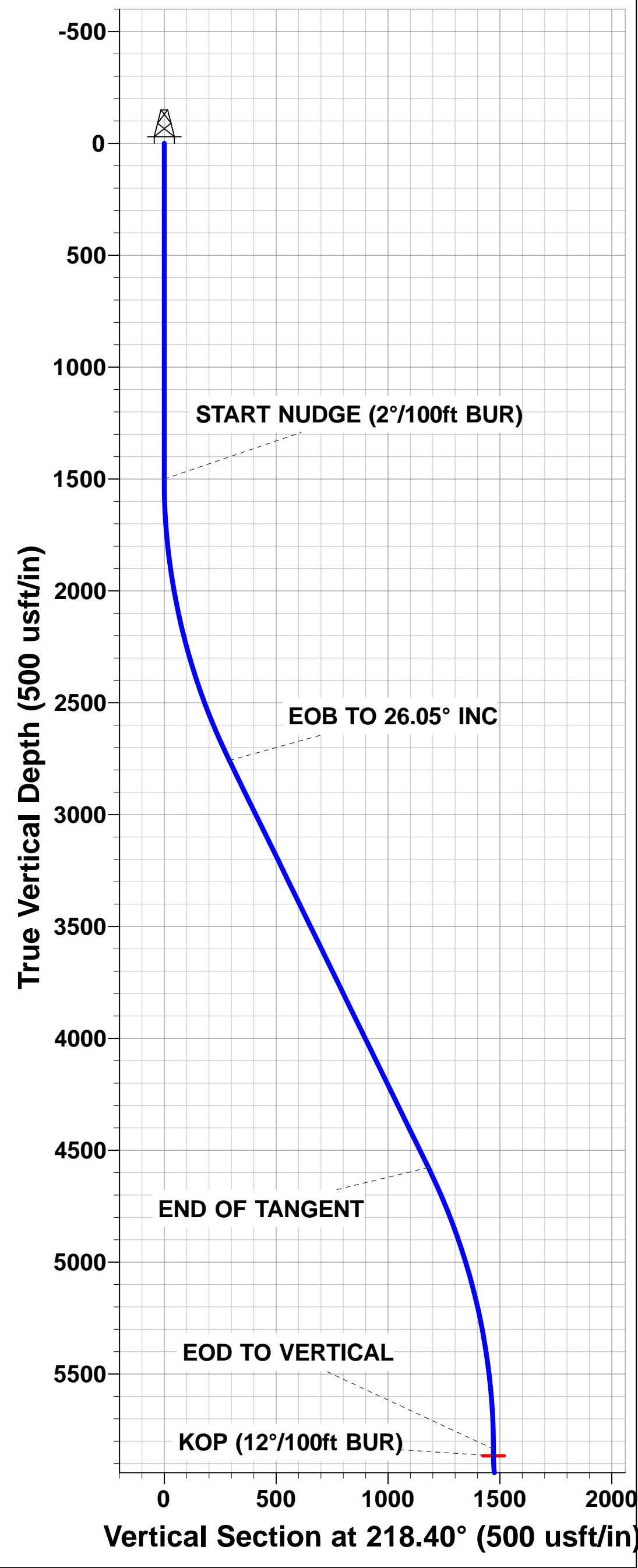
WELLBORE TARGET DETAILS (LAT/LONG)					
Name	TVD	+N/-S	+E/-W	Latitude	Longitude
KOP - NP Y-E-35HNC	5865.7	-1153.3	-914.1	40.348984	-104.393789
BHL - NP Y-E-35HNC	6369.0	-1205.2	-5708.4	40.348840	-104.410990
7" ICP - NP Y-E-35HNC	6369.0	-1159.5	-1488.1	40.348967	-104.395849



PROPOSED LOCAL COORDINATES:
SHL: 1155ft FSL & 1004ft FWL of Sec 36
7" ICP: 10ft FSL & 470ft FEL of Sec 35
BHL: 10ft FSL & 470ft FWL of Sec 35

Azimuths to True North
Magnetic North: 8.19°

Magnetic Field
Strength: 52601.8snT
Dip Angle: 66.92°
Date: 08/10/2015
Model: IGRF2015



Database:	EDM 5000.1 Single User Db	Local Co-ordinate Reference:	Well NORTH PLATTE Y-E-35HNC
Company:	BONANZA CREEK ENERGY INC.	TVD Reference:	KB-EST @ 4559.0usft (Original Well Elev)
Project:	WELD COUNTY, COLORADO (NAD 83)	MD Reference:	KB-EST @ 4559.0usft (Original Well Elev)
Site:	SW SW SEC. 36 T5N R63W 6th P.M.	North Reference:	True
Well:	NORTH PLATTE Y-E-35HNC	Survey Calculation Method:	Minimum Curvature
Wellbore:	ORIGINAL WELLBORE		
Design:	PROPOSAL #2		

Project	WELD COUNTY, COLORADO (NAD 83)		
Map System:	US State Plane 1983	System Datum:	Mean Sea Level
Geo Datum:	North American Datum 1983		
Map Zone:	Colorado Northern Zone		Using geodetic scale factor

Site	SW SW SEC. 36 T5N R63W 6th P.M.				
Site Position:		Northing:	1,373,143.47 usft	Latitude:	40.352370
From:	Lat/Long	Easting:	3,309,213.49 usft	Longitude:	-104.390510
Position Uncertainty:	0.0 usft	Slot Radius:	1.10000ft	Grid Convergence:	0.72 °

Well	NORTH PLATTE Y-E-35HNC					
Well Position	+N/-S	-80.2 usft	Northing:	1,373,063.32 usft	Latitude:	40.352150
	+E/-W	0.0 usft	Easting:	3,309,214.49 usft	Longitude:	-104.390510
Position Uncertainty		0.0 usft	Wellhead Elevation:	usft	Ground Level:	4,542.0 usft

Wellbore	ORIGINAL WELLBORE				
Magnetics	Model Name	Sample Date	Declination (°)	Dip Angle (°)	Field Strength (nT)
	IGRF2015	08/10/2015	8.19	66.92	52,602

Design	PROPOSAL #2			
Audit Notes:				
Version:	Phase:	PROTOTYPE	Tie On Depth:	0.0
Vertical Section:	Depth From (TVD) (usft)	+N/-S (usft)	+E/-W (usft)	Direction (°)
	0.0	0.0	0.0	258.08

Plan Sections											
MD (usft)	Inc (°)	Azi (°)	Vertical Depth	SS (usft)	+N/-S (usft)	+E/-W (usft)	Dogleg Rate (°/100usf)	Build Rate (°/100usf)	Turn Rate (°/100usf)	TFO (°)	Target
0.0	0.00	0.00	0.0	-4,559.0	0.0	0.0	0.00	0.00	0.00	0.00	
1,500.0	0.00	0.00	1,500.0	-3,059.0	0.0	0.0	0.00	0.00	0.00	0.00	
2,802.7	26.05	218.40	2,758.3	-1,800.7	-228.1	-180.8	2.00	2.00	0.00	218.40	
4,827.6	26.05	218.40	4,577.4	18.4	-925.2	-733.3	0.00	0.00	0.00	0.00	
6,130.3	0.00	0.00	5,835.7	1,276.7	-1,153.3	-914.1	2.00	-2.00	0.00	180.00	
6,160.3	0.00	0.00	5,865.7	1,306.7	-1,153.3	-914.1	0.00	0.00	0.00	0.00	KOP - NP Y-E-35HI
6,785.3	75.00	269.38	6,326.9	1,767.9	-1,157.1	-1,268.0	12.00	12.00	0.00	269.38	
6,885.3	75.00	269.38	6,352.8	1,793.8	-1,158.2	-1,364.6	0.00	0.00	0.00	0.00	
7,010.3	90.00	269.38	6,369.0	1,810.0	-1,159.5	-1,488.1	12.00	12.00	0.00	0.00	
11,230.9	90.00	269.38	6,369.0	1,810.0	-1,205.2	-5,708.4	0.00	0.00	0.00	0.00	BHL - NP Y-E-35HI

Database:	EDM 5000.1 Single User Db	Local Co-ordinate Reference:	Well NORTH PLATTE Y-E-35HNC
Company:	BONANZA CREEK ENERGY INC.	TVD Reference:	KB-EST @ 4559.0usft (Original Well Elev)
Project:	WELD COUNTY, COLORADO (NAD 83)	MD Reference:	KB-EST @ 4559.0usft (Original Well Elev)
Site:	SW SW SEC. 36 T5N R63W 6th P.M.	North Reference:	True
Well:	NORTH PLATTE Y-E-35HNC	Survey Calculation Method:	Minimum Curvature
Wellbore:	ORIGINAL WELLBORE		
Design:	PROPOSAL #2		

Planned Survey

MD (usft)	Inc (°)	Azi (°)	TVD (usft)	SS (usft)	+N/-S (usft)	+E/-W (usft)	Vertical Section (usft)	Dogleg Rate (°/100usft)	Build Rate (°/100usft)	Turn Rate (°/100usft)
0.0	0.00	0.00	0.0	4,559.00	0.0	0.0	0.0	0.00	0.00	0.00
100.0	0.00	0.00	100.0	4,459.00	0.0	0.0	0.0	0.00	0.00	0.00
200.0	0.00	0.00	200.0	4,359.00	0.0	0.0	0.0	0.00	0.00	0.00
300.0	0.00	0.00	300.0	4,259.00	0.0	0.0	0.0	0.00	0.00	0.00
400.0	0.00	0.00	400.0	4,159.00	0.0	0.0	0.0	0.00	0.00	0.00
500.0	0.00	0.00	500.0	4,059.00	0.0	0.0	0.0	0.00	0.00	0.00
600.0	0.00	0.00	600.0	3,959.00	0.0	0.0	0.0	0.00	0.00	0.00
700.0	0.00	0.00	700.0	3,859.00	0.0	0.0	0.0	0.00	0.00	0.00
800.0	0.00	0.00	800.0	3,759.00	0.0	0.0	0.0	0.00	0.00	0.00
900.0	0.00	0.00	900.0	3,659.00	0.0	0.0	0.0	0.00	0.00	0.00
1,000.0	0.00	0.00	1,000.0	3,559.00	0.0	0.0	0.0	0.00	0.00	0.00
1,100.0	0.00	0.00	1,100.0	3,459.00	0.0	0.0	0.0	0.00	0.00	0.00
1,200.0	0.00	0.00	1,200.0	3,359.00	0.0	0.0	0.0	0.00	0.00	0.00
1,300.0	0.00	0.00	1,300.0	3,259.00	0.0	0.0	0.0	0.00	0.00	0.00
1,400.0	0.00	0.00	1,400.0	3,159.00	0.0	0.0	0.0	0.00	0.00	0.00
START NUDGE (2°/100ft BUR)										
1,500.0	0.00	0.00	1,500.0	3,059.00	0.0	0.0	0.0	0.00	0.00	0.00
1,600.0	2.00	218.40	1,600.0	2,959.02	-1.4	-1.1	1.3	2.00	2.00	0.00
1,700.0	4.00	218.40	1,699.8	2,859.16	-5.5	-4.3	5.4	2.00	2.00	0.00
1,800.0	6.00	218.40	1,799.5	2,759.55	-12.3	-9.7	12.1	2.00	2.00	0.00
1,900.0	8.00	218.40	1,898.7	2,660.30	-21.8	-17.3	21.5	2.00	2.00	0.00
2,000.0	10.00	218.40	1,997.5	2,561.53	-34.1	-27.0	33.5	2.00	2.00	0.00
2,100.0	12.00	218.40	2,095.6	2,463.38	-49.1	-38.9	48.2	2.00	2.00	0.00
2,200.0	14.00	218.40	2,193.1	2,365.94	-66.7	-52.9	65.5	2.00	2.00	0.00
2,300.0	16.00	218.40	2,289.6	2,269.36	-87.0	-68.9	85.4	2.00	2.00	0.00
2,400.0	18.00	218.40	2,385.3	2,173.73	-109.9	-87.1	107.9	2.00	2.00	0.00
2,500.0	20.00	218.40	2,479.8	2,079.18	-135.4	-107.3	133.0	2.00	2.00	0.00
2,600.0	22.00	218.40	2,573.2	1,985.83	-163.5	-129.6	160.5	2.00	2.00	0.00
2,700.0	24.00	218.40	2,665.2	1,893.79	-194.1	-153.8	190.6	2.00	2.00	0.00
2,800.0	26.00	218.40	2,755.8	1,803.16	-227.2	-180.1	223.1	2.00	2.00	0.00
EOB TO 26.05° INC										
2,802.7	26.05	218.40	2,758.3	1,800.73	-228.1	-180.8	224.1	2.00	2.00	0.00
2,900.0	26.05	218.40	2,845.7	1,713.32	-261.6	-207.4	256.9	0.00	0.00	0.00
3,000.0	26.05	218.40	2,935.5	1,623.48	-296.1	-234.7	290.8	0.00	0.00	0.00
3,100.0	26.05	218.40	3,025.4	1,533.64	-330.5	-261.9	324.6	0.00	0.00	0.00
3,200.0	26.05	218.40	3,115.2	1,443.81	-364.9	-289.2	358.4	0.00	0.00	0.00
3,300.0	26.05	218.40	3,205.0	1,353.97	-399.3	-316.5	392.2	0.00	0.00	0.00
3,400.0	26.05	218.40	3,294.9	1,264.13	-433.7	-343.8	426.0	0.00	0.00	0.00
3,500.0	26.05	218.40	3,384.7	1,174.29	-468.2	-371.1	459.8	0.00	0.00	0.00
3,600.0	26.05	218.40	3,474.5	1,084.45	-502.6	-398.3	493.6	0.00	0.00	0.00
3,700.0	26.05	218.40	3,564.4	994.62	-537.0	-425.6	527.4	0.00	0.00	0.00
3,800.0	26.05	218.40	3,654.2	904.78	-571.4	-452.9	561.2	0.00	0.00	0.00
3,900.0	26.05	218.40	3,744.1	814.94	-605.8	-480.2	595.0	0.00	0.00	0.00
4,000.0	26.05	218.40	3,833.9	725.10	-640.3	-507.5	628.8	0.00	0.00	0.00
4,100.0	26.05	218.40	3,923.7	635.26	-674.7	-534.8	662.6	0.00	0.00	0.00
4,200.0	26.05	218.40	4,013.6	545.43	-709.1	-562.0	696.4	0.00	0.00	0.00
4,300.0	26.05	218.40	4,103.4	455.59	-743.5	-589.3	730.2	0.00	0.00	0.00
4,400.0	26.05	218.40	4,193.3	365.75	-778.0	-616.6	764.0	0.00	0.00	0.00
4,500.0	26.05	218.40	4,283.1	275.91	-812.4	-643.9	797.8	0.00	0.00	0.00
4,600.0	26.05	218.40	4,372.9	186.07	-846.8	-671.2	831.6	0.00	0.00	0.00
4,700.0	26.05	218.40	4,462.8	96.23	-881.2	-698.4	865.4	0.00	0.00	0.00
4,800.0	26.05	218.40	4,552.6	6.40	-915.6	-725.7	899.2	0.00	0.00	0.00

END OF TANGENT

Database:	EDM 5000.1 Single User Db	Local Co-ordinate Reference:	Well NORTH PLATTE Y-E-35HNC
Company:	BONANZA CREEK ENERGY INC.	TVD Reference:	KB-EST @ 4559.0usft (Original Well Elev)
Project:	WELD COUNTY, COLORADO (NAD 83)	MD Reference:	KB-EST @ 4559.0usft (Original Well Elev)
Site:	SW SW SEC. 36 T5N R63W 6th P.M.	North Reference:	True
Well:	NORTH PLATTE Y-E-35HNC	Survey Calculation Method:	Minimum Curvature
Wellbore:	ORIGINAL WELLBORE		
Design:	PROPOSAL #2		

Planned Survey

MD (usft)	Inc (°)	Azi (°)	TVD (usft)	SS (usft)	+N/-S (usft)	+E/-W (usft)	Vertical Section (usft)	Dogleg Rate (°/100usft)	Build Rate (°/100usft)	Turn Rate (°/100usft)
4,827.6	26.05	218.40	4,577.4	-18.40	-925.1	-733.3	908.6	0.00	0.00	0.00
4,900.0	24.61	218.40	4,642.8	-83.84	-949.4	-752.5	932.4	2.00	-2.00	0.00
5,000.0	22.61	218.40	4,734.5	-175.46	-980.8	-777.4	963.2	2.00	-2.00	0.00
5,100.0	20.61	218.40	4,827.4	-268.43	-1,009.7	-800.2	991.6	2.00	-2.00	0.00
5,200.0	18.61	218.40	4,921.6	-362.63	-1,035.9	-821.1	1,017.4	2.00	-2.00	0.00
5,300.0	16.61	218.40	5,016.9	-457.94	-1,059.7	-839.9	1,040.7	2.00	-2.00	0.00
5,400.0	14.61	218.40	5,113.2	-554.25	-1,080.7	-856.6	1,061.4	2.00	-2.00	0.00
5,500.0	12.61	218.40	5,210.4	-651.44	-1,099.2	-871.2	1,079.5	2.00	-2.00	0.00
5,600.0	10.61	218.40	5,308.4	-749.39	-1,114.9	-883.7	1,094.9	2.00	-2.00	0.00
5,700.0	8.61	218.40	5,407.0	-847.98	-1,128.0	-894.1	1,107.8	2.00	-2.00	0.00
5,800.0	6.61	218.40	5,506.1	-947.09	-1,138.4	-902.3	1,118.0	2.00	-2.00	0.00
5,900.0	4.61	218.40	5,605.6	-1,046.61	-1,146.0	-908.4	1,125.5	2.00	-2.00	0.00
6,000.0	2.61	218.40	5,705.4	-1,146.41	-1,151.0	-912.3	1,130.3	2.00	-2.00	0.00
6,100.0	0.61	218.40	5,805.4	-1,246.36	-1,153.2	-914.0	1,132.5	2.00	-2.00	0.00
EOD TO VERTICAL										
6,130.3	0.00	218.40	5,835.7	-1,276.66	-1,153.3	-914.1	1,132.6	2.00	-2.00	0.00
KOP (12°/100ft BUR)										
6,160.3	0.00	0.00	5,865.7	-1,306.66	-1,153.3	-914.1	1,132.6	0.00	0.00	0.00
6,200.0	4.76	269.38	5,905.3	-1,346.32	-1,153.3	-915.7	1,134.2	11.99	11.99	0.00
6,300.0	16.76	269.38	6,003.4	-1,444.38	-1,153.5	-934.4	1,152.5	12.00	12.00	0.00
6,400.0	28.76	269.38	6,095.4	-1,536.42	-1,153.9	-973.0	1,190.4	12.00	12.00	0.00
6,500.0	40.76	269.38	6,177.4	-1,618.43	-1,154.6	-1,029.9	1,246.2	12.00	12.00	0.00
6,600.0	52.76	269.38	6,245.8	-1,686.81	-1,155.3	-1,102.6	1,317.5	12.00	12.00	0.00
6,700.0	64.76	269.38	6,297.6	-1,738.58	-1,156.3	-1,187.9	1,401.2	12.00	12.00	0.00
START OF TANGENT										
6,785.3	75.00	269.38	6,326.9	-1,767.89	-1,157.1	-1,267.9	1,479.6	12.00	12.00	0.00
6,800.0	75.00	269.38	6,330.7	-1,771.69	-1,157.3	-1,282.1	1,493.5	0.03	0.03	0.00
END OF TANGENT										
6,885.3	75.00	269.38	6,352.8	-1,793.77	-1,158.2	-1,364.5	1,574.3	0.00	0.00	0.00
6,900.0	76.76	269.38	6,356.4	-1,797.35	-1,158.3	-1,378.8	1,588.3	11.97	11.97	0.00
7,000.0	88.76	269.38	6,368.9	-1,809.93	-1,159.4	-1,477.8	1,685.4	12.00	12.00	0.00
7" ICP - NP Y-E-35HNC										
7,010.3	90.00	269.38	6,369.0	-1,810.05	-1,159.5	-1,488.1	1,695.5	12.00	12.00	0.00
7,100.0	90.00	269.38	6,369.0	-1,810.05	-1,160.5	-1,577.8	1,783.5	0.01	0.01	0.00
7,200.0	90.00	269.38	6,369.0	-1,810.05	-1,161.6	-1,677.8	1,881.5	0.00	0.00	0.00
7,300.0	90.00	269.38	6,369.0	-1,810.05	-1,162.6	-1,777.8	1,979.6	0.00	0.00	0.00
7,400.0	90.00	269.38	6,369.0	-1,810.05	-1,163.7	-1,877.8	2,077.7	0.00	0.00	0.00
7,500.0	90.00	269.38	6,369.0	-1,810.05	-1,164.8	-1,977.8	2,175.7	0.00	0.00	0.00
7,600.0	90.00	269.38	6,369.0	-1,810.05	-1,165.9	-2,077.8	2,273.8	0.00	0.00	0.00
7,700.0	90.00	269.38	6,369.0	-1,810.05	-1,167.0	-2,177.7	2,371.8	0.00	0.00	0.00
7,800.0	90.00	269.38	6,369.0	-1,810.05	-1,168.1	-2,277.7	2,469.9	0.00	0.00	0.00
7,900.0	90.00	269.38	6,369.0	-1,810.05	-1,169.1	-2,377.7	2,568.0	0.00	0.00	0.00
8,000.0	90.00	269.38	6,369.0	-1,810.05	-1,170.2	-2,477.7	2,666.0	0.00	0.00	0.00
8,100.0	90.00	269.38	6,369.0	-1,810.05	-1,171.3	-2,577.7	2,764.1	0.00	0.00	0.00
8,200.0	90.00	269.38	6,369.0	-1,810.05	-1,172.4	-2,677.7	2,862.1	0.00	0.00	0.00
8,300.0	90.00	269.38	6,369.0	-1,810.05	-1,173.5	-2,777.7	2,960.2	0.00	0.00	0.00
8,400.0	90.00	269.38	6,369.0	-1,810.05	-1,174.5	-2,877.7	3,058.3	0.00	0.00	0.00
8,500.0	90.00	269.38	6,369.0	-1,810.05	-1,175.6	-2,977.7	3,156.3	0.00	0.00	0.00
8,600.0	90.00	269.38	6,369.0	-1,810.05	-1,176.7	-3,077.7	3,254.4	0.00	0.00	0.00
8,700.0	90.00	269.38	6,369.0	-1,810.05	-1,177.8	-3,177.7	3,352.4	0.00	0.00	0.00
8,800.0	90.00	269.38	6,369.0	-1,810.05	-1,178.9	-3,277.7	3,450.5	0.00	0.00	0.00
8,900.0	90.00	269.38	6,369.0	-1,810.05	-1,180.0	-3,377.7	3,548.6	0.00	0.00	0.00
9,000.0	90.00	269.38	6,369.0	-1,810.05	-1,181.0	-3,477.7	3,646.6	0.00	0.00	0.00
9,100.0	90.00	269.38	6,369.0	-1,810.05	-1,182.1	-3,577.7	3,744.7	0.00	0.00	0.00

Database:	EDM 5000.1 Single User Db	Local Co-ordinate Reference:	Well NORTH PLATTE Y-E-35HNC
Company:	BONANZA CREEK ENERGY INC.	TVD Reference:	KB-EST @ 4559.0usft (Original Well Elev)
Project:	WELD COUNTY, COLORADO (NAD 83)	MD Reference:	KB-EST @ 4559.0usft (Original Well Elev)
Site:	SW SW SEC. 36 T5N R63W 6th P.M.	North Reference:	True
Well:	NORTH PLATTE Y-E-35HNC	Survey Calculation Method:	Minimum Curvature
Wellbore:	ORIGINAL WELLBORE		
Design:	PROPOSAL #2		

Planned Survey

MD (usft)	Inc (°)	Azi (°)	TVD (usft)	SS (usft)	+N/-S (usft)	+E/-W (usft)	Vertical Section (usft)	Dogleg Rate (°/100usft)	Build Rate (°/100usft)	Turn Rate (°/100usft)
9,200.0	90.00	269.38	6,369.0	-1,810.05	-1,183.2	-3,677.7	3,842.8	0.00	0.00	0.00
9,300.0	90.00	269.38	6,369.0	-1,810.05	-1,184.3	-3,777.7	3,940.8	0.00	0.00	0.00
9,400.0	90.00	269.38	6,369.0	-1,810.05	-1,185.4	-3,877.6	4,038.9	0.00	0.00	0.00
9,500.0	90.00	269.38	6,369.0	-1,810.05	-1,186.5	-3,977.6	4,136.9	0.00	0.00	0.00
9,600.0	90.00	269.38	6,369.0	-1,810.05	-1,187.5	-4,077.6	4,235.0	0.00	0.00	0.00
9,700.0	90.00	269.38	6,369.0	-1,810.05	-1,188.6	-4,177.6	4,333.1	0.00	0.00	0.00
9,800.0	90.00	269.38	6,369.0	-1,810.05	-1,189.7	-4,277.6	4,431.1	0.00	0.00	0.00
9,900.0	90.00	269.38	6,369.0	-1,810.05	-1,190.8	-4,377.6	4,529.2	0.00	0.00	0.00
10,000.0	90.00	269.38	6,369.0	-1,810.05	-1,191.9	-4,477.6	4,627.2	0.00	0.00	0.00
10,100.0	90.00	269.38	6,369.0	-1,810.05	-1,192.9	-4,577.6	4,725.3	0.00	0.00	0.00
10,200.0	90.00	269.38	6,369.0	-1,810.05	-1,194.0	-4,677.6	4,823.4	0.00	0.00	0.00
10,300.0	90.00	269.38	6,369.0	-1,810.05	-1,195.1	-4,777.6	4,921.4	0.00	0.00	0.00
10,400.0	90.00	269.38	6,369.0	-1,810.05	-1,196.2	-4,877.6	5,019.5	0.00	0.00	0.00
10,500.0	90.00	269.38	6,369.0	-1,810.05	-1,197.3	-4,977.6	5,117.5	0.00	0.00	0.00
10,600.0	90.00	269.38	6,369.0	-1,810.05	-1,198.4	-5,077.6	5,215.6	0.00	0.00	0.00
10,700.0	90.00	269.38	6,369.0	-1,810.05	-1,199.4	-5,177.6	5,313.7	0.00	0.00	0.00
10,800.0	90.00	269.38	6,369.0	-1,810.05	-1,200.5	-5,277.6	5,411.7	0.00	0.00	0.00
10,900.0	90.00	269.38	6,369.0	-1,810.05	-1,201.6	-5,377.6	5,509.8	0.00	0.00	0.00
11,000.0	90.00	269.38	6,369.0	-1,810.05	-1,202.7	-5,477.6	5,607.8	0.00	0.00	0.00
11,100.0	90.00	269.38	6,369.0	-1,810.05	-1,203.8	-5,577.5	5,705.9	0.00	0.00	0.00
11,200.0	90.00	269.38	6,369.0	-1,810.05	-1,204.8	-5,677.5	5,804.0	0.00	0.00	0.00
BHL - NP Y-E-35HNC										
11,230.9	90.00	269.38	6,369.0	-1,810.00	-1,205.2	-5,708.4	5,834.3	0.00	0.00	0.00

Plan Annotations

MD (usft)	TVD (usft)	Local Coordinates		Comment
		+N/-S (usft)	+E/-W (usft)	
1,500.0	1,500.0	0.0	0.0	START NUDGE (2°/100ft BUR)
2,802.7	2,758.3	-228.1	-180.8	EOB TO 26.05° INC
4,827.6	4,577.4	-925.1	-733.3	END OF TANGENT
6,130.3	5,835.7	-1,153.3	-914.1	EOD TO VERTICAL
6,160.3	5,865.7	-1,153.3	-914.1	KOP (12°/100ft BUR)
6,785.3	6,326.9	-1,157.1	-1,267.9	START OF TANGENT
6,885.3	6,352.8	-1,158.2	-1,364.5	END OF TANGENT
7,010.3	6,369.0	-1,159.5	-1,488.1	7" ICP - NP Y-E-35HNC
11,230.9	6,369.0	-1,205.2	-5,708.4	BHL - NP Y-E-35HNC