

BONANZA CREEK ENERGY INC.

WELD COUNTY, COLORADO (NAD 83)

SW SW SEC. 36 T5N R63W 6th P.M.

NORTH PLATTE Y44-E14-35HNB

ORIGINAL WELLBORE

11 November, 2015

Plan: PROPOSAL #2

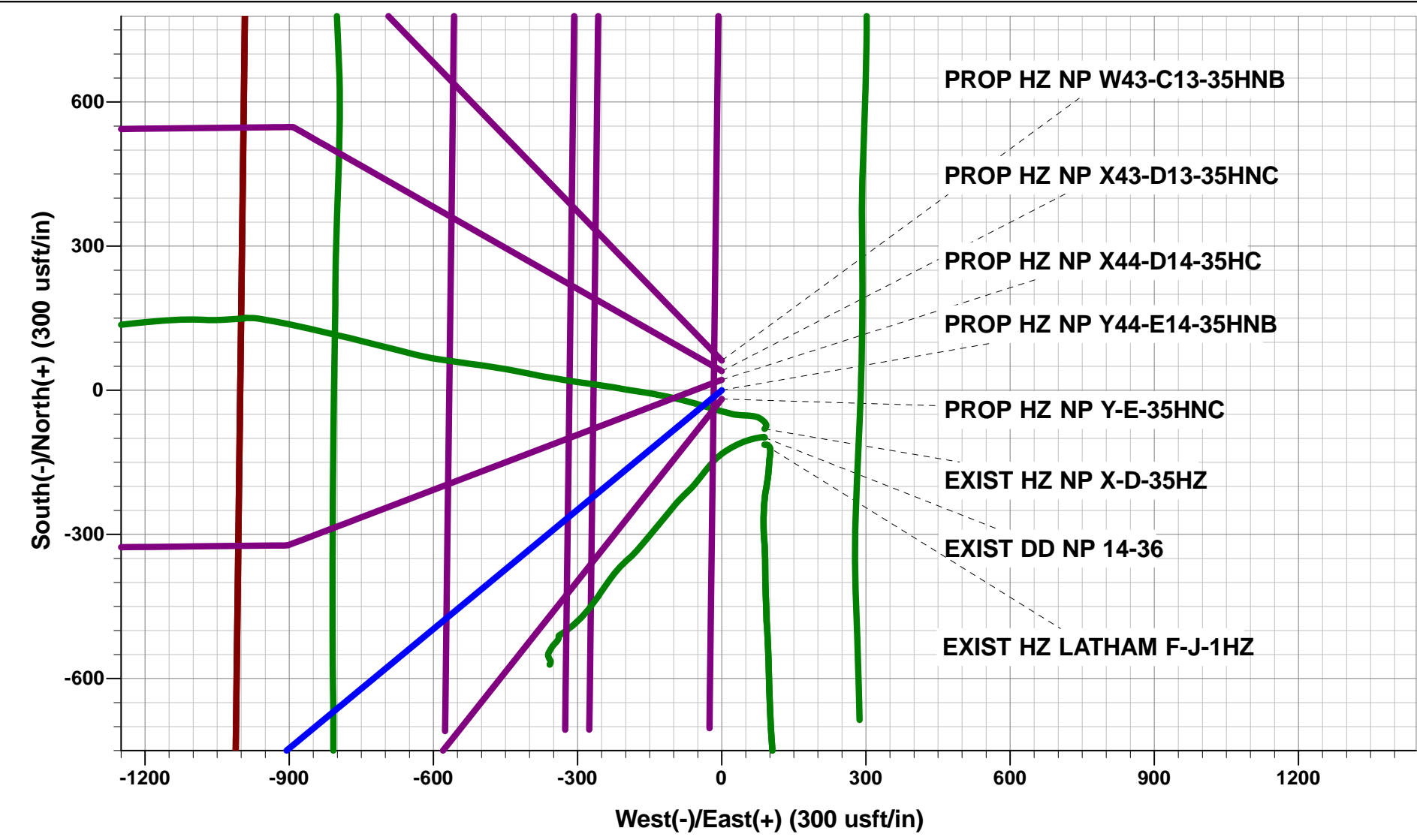




Project: WELD COUNTY, COLORADO (NAD 83)
Site: SW SW SEC. 36 T5N R63W 6th P.M.
Well: NORTH PLATTE Y44-E14-35HNB
Wellbore: ORIGINAL WELLBORE
Design: PROPOSAL #2

ANNOTATIONS									
TVD	MD	Inc	Azi	+N/-S	+E/-W	VSect	Dep	Annotation	
1600.0	1600.0	0.00	0.00	0.0	0.0	0.0	0.0	START NUDDGE (2°/100ft BUR)	
2614.0	2636.5	20.73	230.37	-118.3	-142.8	158.0	185.5	EOB TO 20.73° INC	
4751.7	4922.1	20.73	230.37	-634.3	-766.0	847.0	994.5	END OF TANGENT	
5765.7	5958.6	0.00	230.37	-752.6	-908.8	1004.9	1180.0	EOD TO VERTICAL	
5795.7	5988.6	0.00	0.00	-752.6	-908.8	1004.9	1180.0	KOP (12°/100ft BUR)	
6256.9	6613.6	75.00	269.38	-756.4	-1262.7	1355.9	1533.8	START OF TANGENT	
6282.8	6713.6	75.00	269.38	-757.5	-1359.2	1451.7	1630.4	END OF TANGENT	
6299.0	6838.6	90.00	269.38	-758.8	-1482.8	1574.2	1754.0	7" ICP - NP Y44-E14-35HNB	
6299.0	11064.4	90.00	269.38	-804.5	-5708.3	5764.7	5979.8	BHL - NP Y44-E14-35HNB	

WELLBORE TARGET DETAILS (LAT/LONG)					
Name	TVD	+N/-S	+E/-W	Latitude	Longitude
KOP - NP Y44-E14-35HNB	5795.7	-752.6	-908.8	40.350134	-104.393771
BHL - NP Y44-E14-35HNB	6299.0	-804.5	-5708.3	40.349990	-104.410990
7" ICP - NP Y44-E14-35HNB	6299.0	-758.8	-1482.8	40.350117	-104.395830



PROPOSED LOCAL COORDINATES:

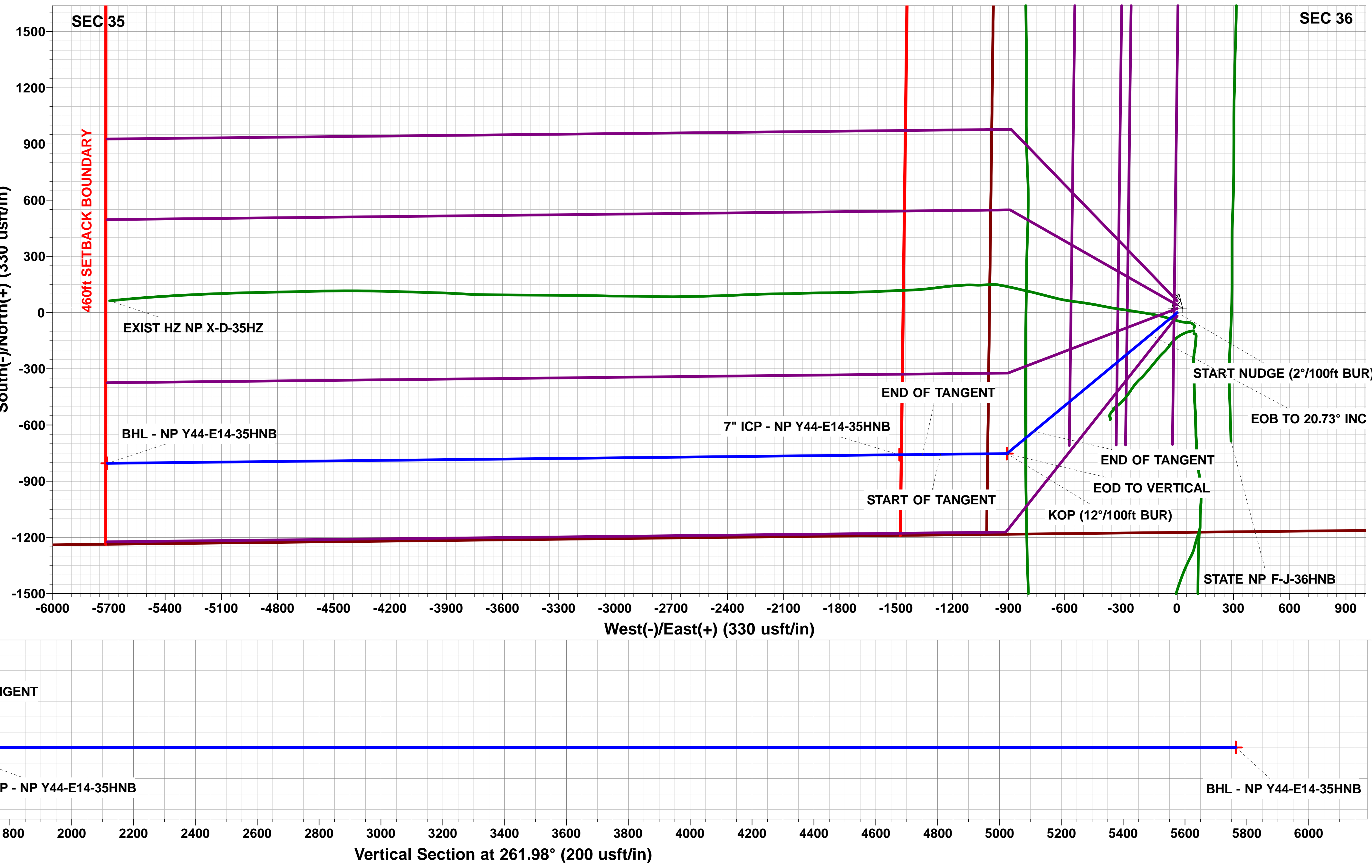
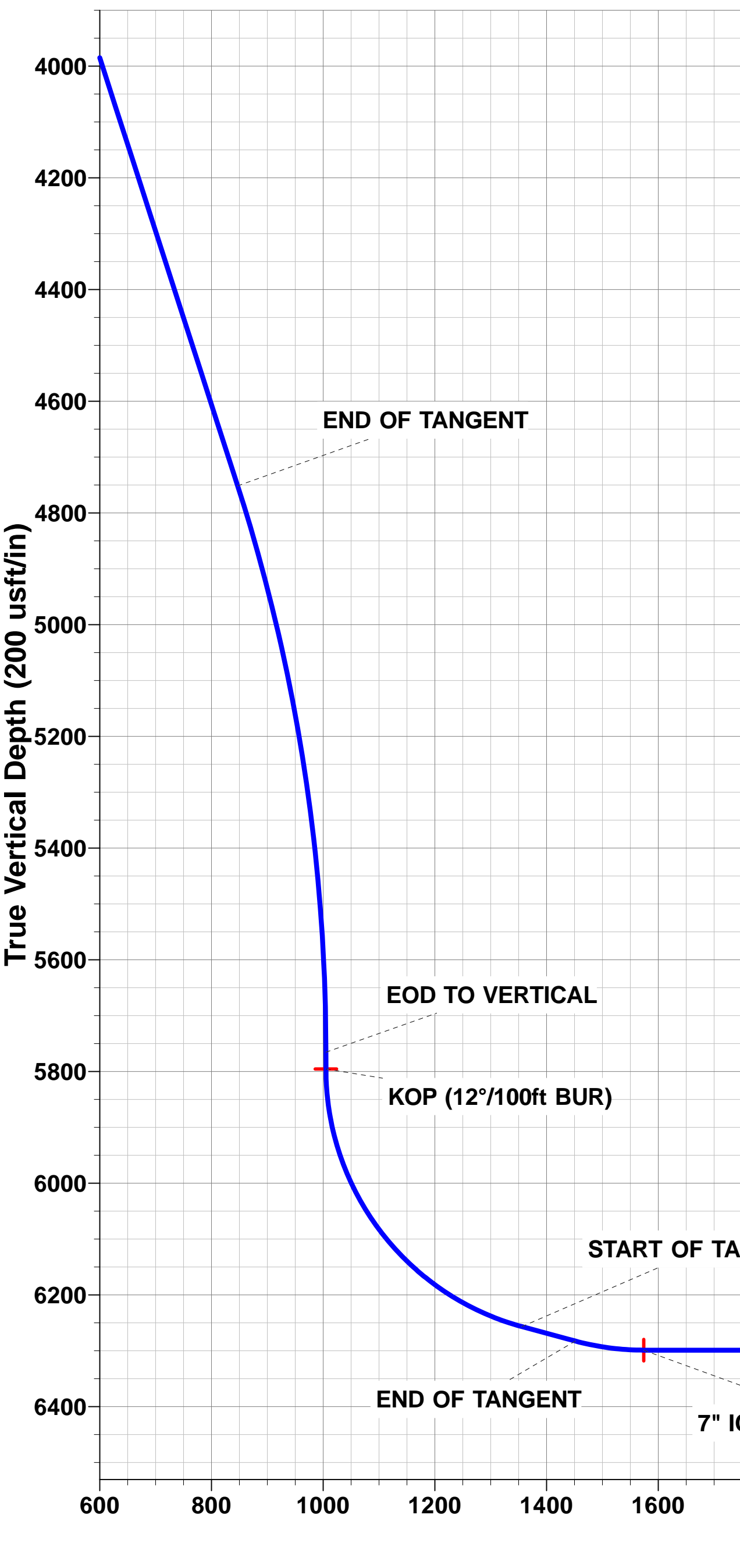
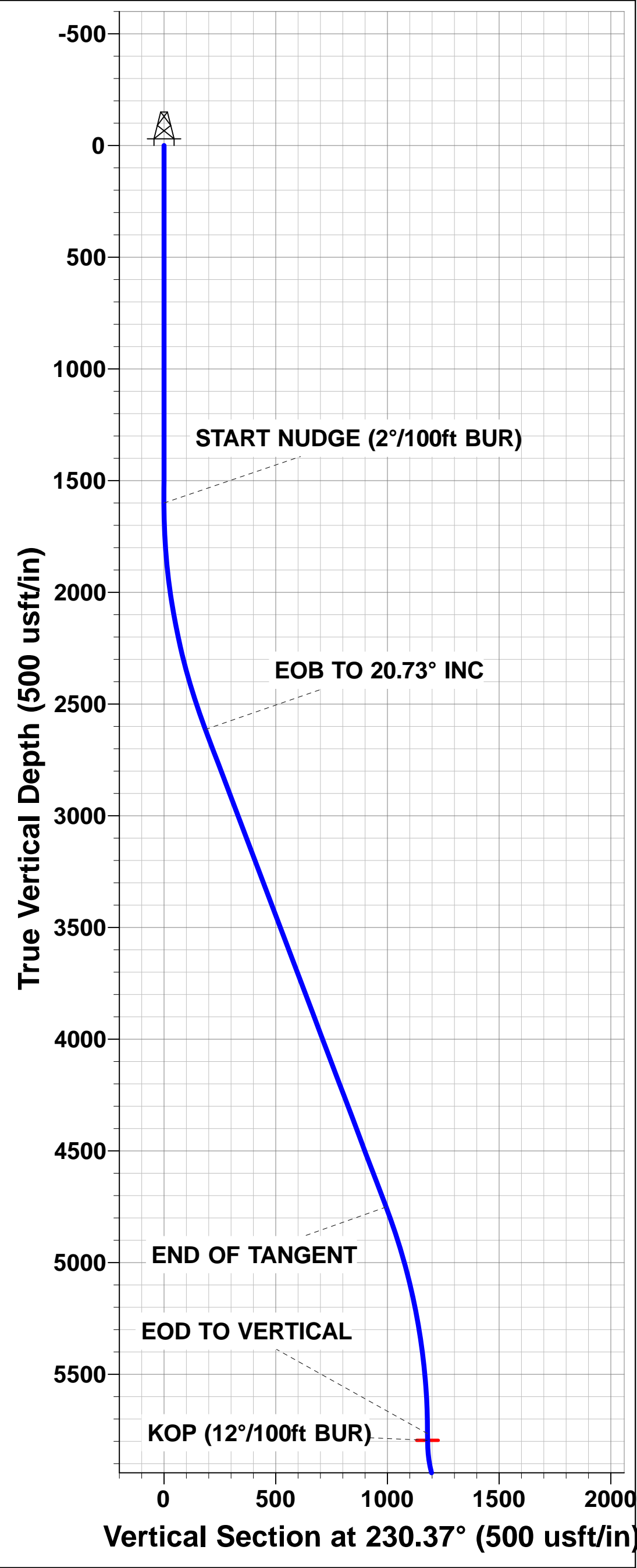
SHL: 1175ft FSL & 1003ft FWL of Sec 36

7" ICP: 430ft FSL & 470ft FEL of Sec 35

BHL: 430ft FSL & 470ft FWL of Sec 35

Azimuths to True North
Magnetic North: 8.19°

Magnetic Field
Strength: 52601.9snT
Dip Angle: 66.92°
Date: 08/10/2015
Model: IGRF2015



Database:	EDM 5000.1 Single User Db	Local Co-ordinate Reference:	Well NORTH PLATTE Y44-E14-35HNB
Company:	BONANZA CREEK ENERGY INC.	TVD Reference:	KB-EST @ 4559.0usft (Original Well Elev)
Project:	WELD COUNTY, COLORADO (NAD 83)	MD Reference:	KB-EST @ 4559.0usft (Original Well Elev)
Site:	SW SW SEC. 36 T5N R63W 6th P.M.	North Reference:	True
Well:	NORTH PLATTE Y44-E14-35HNB	Survey Calculation Method:	Minimum Curvature
Wellbore:	ORIGINAL WELLBORE		
Design:	PROPOSAL #2		

Project	WELD COUNTY, COLORADO (NAD 83)		
Map System:	US State Plane 1983	System Datum:	Mean Sea Level
Geo Datum:	North American Datum 1983		
Map Zone:	Colorado Northern Zone		Using geodetic scale factor

Site	SW SW SEC. 36 T5N R63W 6th P.M.				
Site Position:		Northing:	1,373,143.47 usft	Latitude:	40.352370
From:	Lat/Long	Easting:	3,309,213.49 usft	Longitude:	-104.390510
Position Uncertainty:	0.0 usft	Slot Radius:	1.10000 ft	Grid Convergence:	0.72 °

Well	NORTH PLATTE Y44-E14-35HNB					
Well Position	+N/-S	-61.9 usft	Northing:	1,373,081.53 usft	Latitude:	40.352200
	+E/-W	0.0 usft	Easting:	3,309,214.26 usft	Longitude:	-104.390510
Position Uncertainty		0.0 usft	Wellhead Elevation:	usft	Ground Level:	4,542.0 usft

Wellbore	ORIGINAL WELLBORE				
Magnetics	Model Name	Sample Date	Declination (°)	Dip Angle (°)	Field Strength (nT)
	IGRF2015	08/10/2015	8.19	66.92	52,602

Design	PROPOSAL #2			
Audit Notes:				
Version:	Phase:	PROTOTYPE	Tie On Depth:	0.0
Vertical Section:	Depth From (TVD) (usft)	+N/-S (usft)	+E/-W (usft)	Direction (°)
	0.0	0.0	0.0	261.98

Plan Sections											
MD (usft)	Inc (°)	Azi (°)	Vertical Depth	SS (usft)	+N/-S (usft)	+E/-W (usft)	Dogleg Rate (°/100usf)	Build Rate (°/100usf)	Turn Rate (°/100usf)	TFO (°)	Target
0.0	0.00	0.00	0.0	-4,559.0	0.0	0.0	0.00	0.00	0.00	0.00	
1,600.0	0.00	0.00	1,600.0	-2,959.0	0.0	0.0	0.00	0.00	0.00	0.00	
2,636.5	20.73	230.37	2,614.0	-1,945.0	-118.3	-142.8	2.00	2.00	0.00	230.37	
4,922.1	20.73	230.37	4,751.7	192.7	-634.3	-766.0	0.00	0.00	0.00	0.00	
5,958.6	0.00	0.00	5,765.7	1,206.7	-752.6	-908.8	2.00	-2.00	0.00	180.00	
5,988.6	0.00	0.00	5,795.7	1,236.7	-752.6	-908.8	0.00	0.00	0.00	0.00	KOP - NP Y44-E14
6,613.6	75.00	269.38	6,256.9	1,697.9	-756.4	-1,262.7	12.00	12.00	0.00	269.38	
6,713.6	75.00	269.38	6,282.8	1,723.8	-757.5	-1,359.3	0.00	0.00	0.00	0.00	
6,838.6	90.00	269.38	6,299.0	1,740.0	-758.8	-1,482.8	12.00	12.00	0.00	0.00	
11,064.4	90.00	269.38	6,299.0	1,740.0	-804.5	-5,708.3	0.00	0.00	0.00	60.83	BHL - NP Y44-E14-

Database:	EDM 5000.1 Single User Db	Local Co-ordinate Reference:	Well NORTH PLATTE Y44-E14-35HNB
Company:	BONANZA CREEK ENERGY INC.	TVD Reference:	KB-EST @ 4559.0usft (Original Well Elev)
Project:	WELD COUNTY, COLORADO (NAD 83)	MD Reference:	KB-EST @ 4559.0usft (Original Well Elev)
Site:	SW SW SEC. 36 T5N R63W 6th P.M.	North Reference:	True
Well:	NORTH PLATTE Y44-E14-35HNB	Survey Calculation Method:	Minimum Curvature
Wellbore:	ORIGINAL WELLBORE		
Design:	PROPOSAL #2		

Planned Survey

MD (usft)	Inc (°)	Azi (°)	TVD (usft)	SS (usft)	+N/-S (usft)	+E/-W (usft)	Vertical Section (usft)	Dogleg Rate (°/100usft)	Build Rate (°/100usft)	Turn Rate (°/100usft)
0.0	0.00	0.00	0.0	4,559.00	0.0	0.0	0.0	0.00	0.00	0.00
100.0	0.00	0.00	100.0	4,459.00	0.0	0.0	0.0	0.00	0.00	0.00
200.0	0.00	0.00	200.0	4,359.00	0.0	0.0	0.0	0.00	0.00	0.00
300.0	0.00	0.00	300.0	4,259.00	0.0	0.0	0.0	0.00	0.00	0.00
400.0	0.00	0.00	400.0	4,159.00	0.0	0.0	0.0	0.00	0.00	0.00
500.0	0.00	0.00	500.0	4,059.00	0.0	0.0	0.0	0.00	0.00	0.00
600.0	0.00	0.00	600.0	3,959.00	0.0	0.0	0.0	0.00	0.00	0.00
700.0	0.00	0.00	700.0	3,859.00	0.0	0.0	0.0	0.00	0.00	0.00
800.0	0.00	0.00	800.0	3,759.00	0.0	0.0	0.0	0.00	0.00	0.00
900.0	0.00	0.00	900.0	3,659.00	0.0	0.0	0.0	0.00	0.00	0.00
1,000.0	0.00	0.00	1,000.0	3,559.00	0.0	0.0	0.0	0.00	0.00	0.00
1,100.0	0.00	0.00	1,100.0	3,459.00	0.0	0.0	0.0	0.00	0.00	0.00
1,200.0	0.00	0.00	1,200.0	3,359.00	0.0	0.0	0.0	0.00	0.00	0.00
1,300.0	0.00	0.00	1,300.0	3,259.00	0.0	0.0	0.0	0.00	0.00	0.00
1,400.0	0.00	0.00	1,400.0	3,159.00	0.0	0.0	0.0	0.00	0.00	0.00
1,500.0	0.00	0.00	1,500.0	3,059.00	0.0	0.0	0.0	0.00	0.00	0.00
START NUDGE (2°/100ft BUR)										
1,600.0	0.00	0.00	1,600.0	2,959.00	0.0	0.0	0.0	0.00	0.00	0.00
1,700.0	2.00	230.37	1,700.0	2,859.02	-1.1	-1.3	1.5	2.00	2.00	0.00
1,800.0	4.00	230.37	1,799.8	2,759.16	-4.5	-5.4	5.9	2.00	2.00	0.00
1,900.0	6.00	230.37	1,899.5	2,659.55	-10.0	-12.1	13.4	2.00	2.00	0.00
2,000.0	8.00	230.37	1,998.7	2,560.30	-17.8	-21.5	23.7	2.00	2.00	0.00
2,100.0	10.00	230.37	2,097.5	2,461.53	-27.8	-33.5	37.1	2.00	2.00	0.00
2,200.0	12.00	230.37	2,195.6	2,363.38	-39.9	-48.2	53.3	2.00	2.00	0.00
2,300.0	14.00	230.37	2,293.1	2,265.94	-54.3	-65.5	72.5	2.00	2.00	0.00
2,400.0	16.00	230.37	2,389.6	2,169.36	-70.8	-85.5	94.5	2.00	2.00	0.00
2,500.0	18.00	230.37	2,485.3	2,073.73	-89.4	-108.0	119.4	2.00	2.00	0.00
2,600.0	20.00	230.37	2,579.8	1,979.18	-110.2	-133.1	147.1	2.00	2.00	0.00
EOB TO 20.73° INC										
2,636.5	20.73	230.37	2,614.0	1,944.97	-118.3	-142.8	158.0	2.00	2.00	0.00
2,700.0	20.73	230.37	2,673.4	1,885.58	-132.6	-160.2	177.1	0.00	0.00	0.00
2,800.0	20.73	230.37	2,766.9	1,792.05	-155.2	-187.4	207.2	0.00	0.00	0.00
2,900.0	20.73	230.37	2,860.5	1,698.53	-177.8	-214.7	237.4	0.00	0.00	0.00
3,000.0	20.73	230.37	2,954.0	1,605.00	-200.4	-241.9	267.5	0.00	0.00	0.00
3,100.0	20.73	230.37	3,047.5	1,511.47	-222.9	-269.2	297.7	0.00	0.00	0.00
3,200.0	20.73	230.37	3,141.1	1,417.95	-245.5	-296.5	327.8	0.00	0.00	0.00
3,300.0	20.73	230.37	3,234.6	1,324.42	-268.1	-323.7	358.0	0.00	0.00	0.00
3,400.0	20.73	230.37	3,328.1	1,230.90	-290.7	-351.0	388.1	0.00	0.00	0.00
3,500.0	20.73	230.37	3,421.6	1,137.37	-313.2	-378.3	418.3	0.00	0.00	0.00
3,600.0	20.73	230.37	3,515.2	1,043.84	-335.8	-405.5	448.4	0.00	0.00	0.00
3,700.0	20.73	230.37	3,608.7	950.32	-358.4	-432.8	478.6	0.00	0.00	0.00
3,800.0	20.73	230.37	3,702.2	856.79	-381.0	-460.0	508.7	0.00	0.00	0.00
3,900.0	20.73	230.37	3,795.7	763.27	-403.5	-487.3	538.9	0.00	0.00	0.00
4,000.0	20.73	230.37	3,889.3	669.74	-426.1	-514.6	569.0	0.00	0.00	0.00
4,100.0	20.73	230.37	3,982.8	576.22	-448.7	-541.8	599.1	0.00	0.00	0.00
4,200.0	20.73	230.37	4,076.3	482.69	-471.3	-569.1	629.3	0.00	0.00	0.00
4,300.0	20.73	230.37	4,169.8	389.16	-493.9	-596.4	659.4	0.00	0.00	0.00
4,400.0	20.73	230.37	4,263.4	295.64	-516.4	-623.6	689.6	0.00	0.00	0.00
4,500.0	20.73	230.37	4,356.9	202.11	-539.0	-650.9	719.7	0.00	0.00	0.00
4,600.0	20.73	230.37	4,450.4	108.59	-561.6	-678.1	749.9	0.00	0.00	0.00
4,700.0	20.73	230.37	4,543.9	15.06	-584.2	-705.4	780.0	0.00	0.00	0.00
4,800.0	20.73	230.37	4,637.5	-78.46	-606.7	-732.7	810.2	0.00	0.00	0.00
4,900.0	20.73	230.37	4,731.0	-171.99	-629.3	-759.9	840.3	0.00	0.00	0.00

Database:	EDM 5000.1 Single User Db	Local Co-ordinate Reference:	Well NORTH PLATTE Y44-E14-35HNB
Company:	BONANZA CREEK ENERGY INC.	TVD Reference:	KB-EST @ 4559.0usft (Original Well Elev)
Project:	WELD COUNTY, COLORADO (NAD 83)	MD Reference:	KB-EST @ 4559.0usft (Original Well Elev)
Site:	SW SW SEC. 36 T5N R63W 6th P.M.	North Reference:	True
Well:	NORTH PLATTE Y44-E14-35HNB	Survey Calculation Method:	Minimum Curvature
Wellbore:	ORIGINAL WELLBORE		
Design:	PROPOSAL #2		

Planned Survey

MD (usft)	Inc (°)	Azi (°)	TVD (usft)	SS (usft)	+N/-S (usft)	+E/-W (usft)	Vertical Section (usft)	Dogleg Rate (°/100usft)	Build Rate (°/100usft)	Turn Rate (°/100usft)
END OF TANGENT										
4,922.1	20.73	230.37	4,751.7	-192.66	-634.3	-766.0	847.0	0.00	0.00	0.00
5,000.0	19.17	230.37	4,824.9	-265.88	-651.3	-786.4	869.6	2.00	-2.00	0.00
5,100.0	17.17	230.37	4,919.9	-360.89	-671.1	-810.4	896.2	2.00	-2.00	0.00
5,200.0	15.17	230.37	5,015.9	-456.93	-688.9	-831.9	919.9	2.00	-2.00	0.00
5,300.0	13.17	230.37	5,112.9	-553.88	-704.5	-850.7	940.7	2.00	-2.00	0.00
5,400.0	11.17	230.37	5,210.6	-651.63	-718.0	-867.0	958.7	2.00	-2.00	0.00
5,500.0	9.17	230.37	5,309.0	-750.05	-729.2	-880.6	973.7	2.00	-2.00	0.00
5,600.0	7.17	230.37	5,408.0	-849.03	-738.3	-891.5	985.8	2.00	-2.00	0.00
5,700.0	5.17	230.37	5,507.4	-948.44	-745.2	-899.8	995.0	2.00	-2.00	0.00
5,800.0	3.17	230.37	5,607.2	-1,048.17	-749.8	-905.4	1,001.2	2.00	-2.00	0.00
5,900.0	1.17	230.37	5,707.1	-1,148.10	-752.2	-908.3	1,004.4	2.00	-2.00	0.00
EOD TO VERTICAL										
5,958.6	0.00	230.37	5,765.7	-1,206.69	-752.6	-908.8	1,004.9	2.00	-2.00	0.00
KOP (12°/100ft BUR)										
5,988.6	0.00	0.00	5,795.7	-1,236.69	-752.6	-908.8	1,004.9	0.00	0.00	0.00
6,000.0	1.37	269.38	5,807.1	-1,248.09	-752.6	-908.9	1,005.1	11.99	11.99	0.00
6,100.0	13.37	269.38	5,906.1	-1,347.09	-752.7	-921.7	1,017.8	12.00	12.00	0.00
6,200.0	25.37	269.38	6,000.3	-1,441.25	-753.1	-954.8	1,050.6	12.00	12.00	0.00
6,300.0	37.37	269.38	6,085.5	-1,526.48	-753.7	-1,006.8	1,102.1	12.00	12.00	0.00
6,400.0	49.37	269.38	6,158.0	-1,599.05	-754.4	-1,075.3	1,170.1	12.00	12.00	0.00
6,500.0	61.37	269.38	6,214.8	-1,655.78	-755.3	-1,157.5	1,251.5	12.00	12.00	0.00
6,600.0	73.37	269.38	6,253.2	-1,694.19	-756.3	-1,249.6	1,342.9	12.00	12.00	0.00
START OF TANGENT										
6,613.6	75.00	269.38	6,256.9	-1,697.89	-756.4	-1,262.7	1,355.9	12.00	12.00	0.00
6,700.0	75.00	269.38	6,279.3	-1,720.26	-757.3	-1,346.1	1,438.6	0.00	0.00	0.00
END OF TANGENT										
6,713.6	75.00	269.38	6,282.8	-1,723.78	-757.5	-1,359.2	1,451.7	0.00	0.00	0.00
6,800.0	85.37	269.38	6,297.5	-1,738.49	-758.4	-1,444.3	1,536.0	12.00	12.00	0.00
7" ICP - NP Y44-E14-35HNB										
6,838.6	90.00	269.38	6,299.0	-1,740.05	-758.8	-1,482.8	1,574.2	12.00	12.00	0.00
6,900.0	90.00	269.38	6,299.0	-1,740.05	-759.5	-1,544.2	1,635.1	0.00	0.00	0.00
7,000.0	90.00	269.38	6,299.0	-1,740.05	-760.6	-1,644.2	1,734.3	0.00	0.00	0.00
7,100.0	90.00	269.38	6,299.0	-1,740.05	-761.6	-1,744.2	1,833.4	0.00	0.00	0.00
7,200.0	90.00	269.38	6,299.0	-1,740.05	-762.7	-1,844.2	1,932.6	0.00	0.00	0.00
7,300.0	90.00	269.38	6,299.0	-1,740.05	-763.8	-1,944.2	2,031.8	0.00	0.00	0.00
7,400.0	90.00	269.38	6,299.0	-1,740.05	-764.9	-2,044.2	2,130.9	0.00	0.00	0.00
7,500.0	90.00	269.38	6,299.0	-1,740.05	-766.0	-2,144.2	2,230.1	0.00	0.00	0.00
7,600.0	90.00	269.38	6,299.0	-1,740.05	-767.0	-2,244.2	2,329.3	0.00	0.00	0.00
7,700.0	90.00	269.38	6,299.0	-1,740.04	-768.1	-2,344.2	2,428.4	0.00	0.00	0.00
7,800.0	90.00	269.38	6,299.0	-1,740.04	-769.2	-2,444.2	2,527.6	0.00	0.00	0.00
7,900.0	90.00	269.38	6,299.0	-1,740.04	-770.3	-2,544.2	2,626.8	0.00	0.00	0.00
8,000.0	90.00	269.38	6,299.0	-1,740.04	-771.4	-2,644.1	2,725.9	0.00	0.00	0.00
8,100.0	90.00	269.38	6,299.0	-1,740.04	-772.5	-2,744.1	2,825.1	0.00	0.00	0.00
8,200.0	90.00	269.38	6,299.0	-1,740.04	-773.5	-2,844.1	2,924.3	0.00	0.00	0.00
8,300.0	90.00	269.38	6,299.0	-1,740.04	-774.6	-2,944.1	3,023.4	0.00	0.00	0.00
8,400.0	90.00	269.38	6,299.0	-1,740.04	-775.7	-3,044.1	3,122.6	0.00	0.00	0.00
8,500.0	90.00	269.38	6,299.0	-1,740.04	-776.8	-3,144.1	3,221.8	0.00	0.00	0.00
8,600.0	90.00	269.38	6,299.0	-1,740.04	-777.9	-3,244.1	3,320.9	0.00	0.00	0.00
8,700.0	90.00	269.38	6,299.0	-1,740.04	-778.9	-3,344.1	3,420.1	0.00	0.00	0.00
8,800.0	90.00	269.38	6,299.0	-1,740.04	-780.0	-3,444.1	3,519.3	0.00	0.00	0.00
8,900.0	90.00	269.38	6,299.0	-1,740.04	-781.1	-3,544.1	3,618.4	0.00	0.00	0.00
9,000.0	90.00	269.38	6,299.0	-1,740.03	-782.2	-3,644.1	3,717.6	0.00	0.00	0.00

Database:	EDM 5000.1 Single User Db	Local Co-ordinate Reference:	Well NORTH PLATTE Y44-E14-35HNB
Company:	BONANZA CREEK ENERGY INC.	TVD Reference:	KB-EST @ 4559.0usft (Original Well Elev)
Project:	WELD COUNTY, COLORADO (NAD 83)	MD Reference:	KB-EST @ 4559.0usft (Original Well Elev)
Site:	SW SW SEC. 36 T5N R63W 6th P.M.	North Reference:	True
Well:	NORTH PLATTE Y44-E14-35HNB	Survey Calculation Method:	Minimum Curvature
Wellbore:	ORIGINAL WELLBORE		
Design:	PROPOSAL #2		

Planned Survey

MD (usft)	Inc (°)	Azi (°)	TVD (usft)	SS (usft)	+N/-S (usft)	+E/-W (usft)	Vertical Section (usft)	Dogleg Rate (°/100usft)	Build Rate (°/100usft)	Turn Rate (°/100usft)
9,100.0	90.00	269.38	6,299.0	-1,740.03	-783.3	-3,744.1	3,816.8	0.00	0.00	0.00
9,200.0	90.00	269.38	6,299.0	-1,740.03	-784.3	-3,844.1	3,915.9	0.00	0.00	0.00
9,300.0	90.00	269.38	6,299.0	-1,740.03	-785.4	-3,944.1	4,015.1	0.00	0.00	0.00
9,400.0	90.00	269.38	6,299.0	-1,740.03	-786.5	-4,044.1	4,114.3	0.00	0.00	0.00
9,500.0	90.00	269.38	6,299.0	-1,740.03	-787.6	-4,144.1	4,213.4	0.00	0.00	0.00
9,600.0	90.00	269.38	6,299.0	-1,740.03	-788.7	-4,244.1	4,312.6	0.00	0.00	0.00
9,700.0	90.00	269.38	6,299.0	-1,740.03	-789.7	-4,344.0	4,411.8	0.00	0.00	0.00
9,800.0	90.00	269.38	6,299.0	-1,740.02	-790.8	-4,444.0	4,510.9	0.00	0.00	0.00
9,900.0	90.00	269.38	6,299.0	-1,740.02	-791.9	-4,544.0	4,610.1	0.00	0.00	0.00
10,000.0	90.00	269.38	6,299.0	-1,740.02	-793.0	-4,644.0	4,709.2	0.00	0.00	0.00
10,100.0	90.00	269.38	6,299.0	-1,740.02	-794.1	-4,744.0	4,808.4	0.00	0.00	0.00
10,200.0	90.00	269.38	6,299.0	-1,740.02	-795.1	-4,844.0	4,907.6	0.00	0.00	0.00
10,300.0	90.00	269.38	6,299.0	-1,740.02	-796.2	-4,944.0	5,006.7	0.00	0.00	0.00
10,400.0	90.00	269.38	6,299.0	-1,740.01	-797.3	-5,044.0	5,105.9	0.00	0.00	0.00
10,500.0	90.00	269.38	6,299.0	-1,740.01	-798.4	-5,144.0	5,205.1	0.00	0.00	0.00
10,600.0	90.00	269.38	6,299.0	-1,740.01	-799.4	-5,244.0	5,304.2	0.00	0.00	0.00
10,700.0	90.00	269.38	6,299.0	-1,740.01	-800.5	-5,344.0	5,403.4	0.00	0.00	0.00
10,800.0	90.00	269.38	6,299.0	-1,740.01	-801.6	-5,444.0	5,502.6	0.00	0.00	0.00
10,900.0	90.00	269.38	6,299.0	-1,740.00	-802.7	-5,544.0	5,601.7	0.00	0.00	0.00
11,000.0	90.00	269.38	6,299.0	-1,740.00	-803.8	-5,644.0	5,700.9	0.00	0.00	0.00
BHL - NP Y44-E14-35HNB										
11,064.4	90.00	269.38	6,299.0	-1,740.00	-804.5	-5,708.3	5,764.7	0.00	0.00	0.00

Plan Annotations

MD (usft)	TVD (usft)	Local Coordinates		Comment
		+N/-S (usft)	+E/-W (usft)	
1,600.0	1,600.0	0.0	0.0	START NUDGE (2°/100ft BUR)
2,636.5	2,614.0	-118.3	-142.8	EOB TO 20.73° INC
4,922.1	4,751.7	-634.3	-766.0	END OF TANGENT
5,958.6	5,765.7	-752.6	-908.8	EOD TO VERTICAL
5,988.6	5,795.7	-752.6	-908.8	KOP (12°/100ft BUR)
6,613.6	6,256.9	-756.4	-1,262.7	START OF TANGENT
6,713.6	6,282.8	-757.5	-1,359.2	END OF TANGENT
6,838.6	6,299.0	-758.8	-1,482.8	7" ICP - NP Y44-E14-35HNB
11,064.4	6,299.0	-804.5	-5,708.3	BHL - NP Y44-E14-35HNB