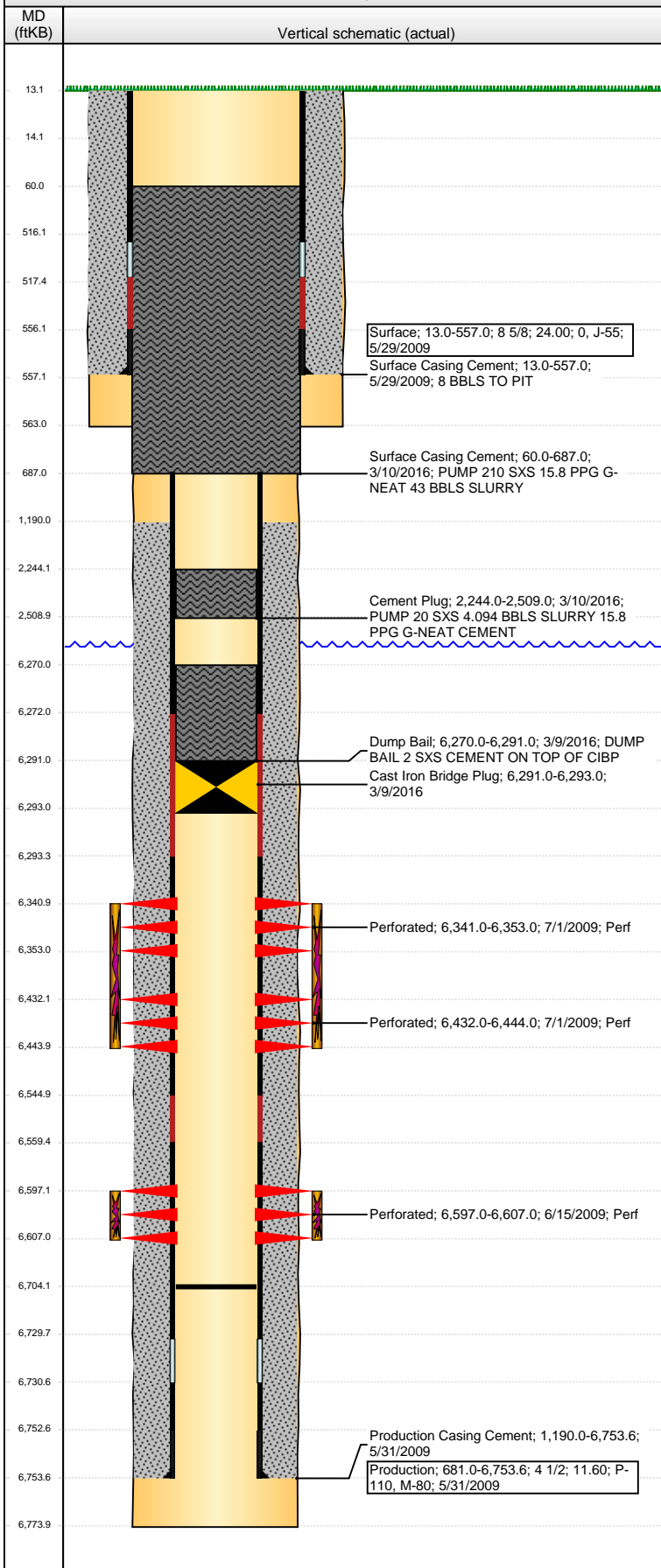


Well Name: WELLS RANCH AF06-06

VERTICAL - ORIGINAL HOLE, 4/5/2016 4:26:35 PM



Well Header									
API 05-123-30172		Business Unit DJ BASIN		District 15		Well Config VERTICAL			
Original KB Elevation (ft) 4,690		KB - GL / MSL (ftKB) 13.00		Spud Date 5/29/2009		P & A Date 3/10/2016			
Comment									
Directions To Well WCR 67 & 68, EAST 2/10THS OF A MILE, SOUTH 1.75 MILES, EAST 2.75 MILES, SOUTH 1.5 MILES, SOUTHEAST INTO LOCATION									
Congressional Location									
Quarter 1	Quarter 2	Quarter 3 SE	Quarter 4 NW	Section 6	Township 5	Twnshp N...	Range 62	Rng E/W Dir W	
Bottom Hole Location									
North-South Distance (ft)		From N or S Line		East-West Distance (ft)		From E or W Line			
Plug Back Total Depths									
Date	Depth (ftKB)	Method			Com				
5/31/2009	6,730.7	CASING TALLY							
6/9/2009	6,716.0	CASED HOLE LOG							
7/28/2009	6,704.0	TUBING TALLY							
Wellbore Sections									
Section Des			Size (in)		Act Top, MD (ftKB)		Act Btm, MD (ftKB)		
SURFACE			12 1/4		13.0		563.0		
PRODUCTION			7 7/8		563.0		6,774.0		
Zone Statuses									
Zone Name	Status Date	Status	Fluid Type		Job	Prod Method			
NIOBRARA	7/3/2009	PR			DRILLING/CO...				
NIOBRARA	3/9/2016	P&A			ABANDON WE...				
CODELL	7/3/2009	PR			DRILLING/CO...				
CODELL	3/9/2016	P&A			ABANDON WE...				
Casing Strings									
Surface, 557.0ftKB									
Casing Description Surface		Run Date 5/29/2009	OD (in) 8 5/8	Wt/Len (l... 24.00	Grade J-55	Top, MD (ft... 13.0	MD (ftKB) 557.0		
Production, 6,753.6ftKB									
Casing Description Production		Run Date 5/31/2009	OD (in) 4 1/2	Wt/Len (l... 11.60	Grade M-80	Top, MD (ft... 13.0	MD (ftKB) 6,753.6		
Cement									
Description Surface Casing Cement					Top Depth (ftKB) 13.0		Bottom Depth (ftKB) 557.0		
Description Production Casing Cement					Top Depth (ftKB) 1,190.0		Bottom Depth (ftKB) 6,753.6		
Description Dump Bail					Top Depth (ftKB) 6,270.0		Bottom Depth (ftKB) 6,291.0		
Description Cement Plug					Top Depth (ftKB) 2,244.0		Bottom Depth (ftKB) 2,509.0		
Description Surface Casing Cement					Top Depth (ftKB) 60.0		Bottom Depth (ftKB) 687.0		
Tubing Strings									
Tubing Description Tubing - Production		Run Date 7/28/2009	String... 2 3/8	ID (in) 1.995	Wt (lb/ft) 4.70	Grade J-55	Len (ft) 6,565.90	Set De... 6,576.9	
Perforation Data									
Zone		Bnch/St g	Entered Shot Total	Top (ftKB)		Btm (ftKB)		Date	
NIOBRARA, ORIGINAL HOLE		A	24	6,341.00		6,353.00		7/1/2009	
NIOBRARA, ORIGINAL HOLE		B	24	6,432.00		6,444.00		7/1/2009	
CODELL, ORIGINAL HOLE			40	6,597.00		6,607.00		6/15/2009	
Stimulations & Treatments									
Date 7/1/2009		Zone CODELL, ORIGINAL HOLE			Primary Job Type DRILLING/COMPLETION - ORIGINAL				
Technical Result Success			Tech Result Details According to Plan			Tech Result Note			
Comment (CODELL): START OF 2 PSA STAGE HAD TO SWITCH OUT BA-40L PUMPS BECAUSE IT WAS HAVING PROBLEMS MOVING PRODUCT. JOB WENT WELL WITH NO OTHER ISSUES TO REPORT.									

Well Name: WELLS RANCH AF06-06

VERTICAL - ORIGINAL HOLE, 4/5/2016 4:26:38 PM

Stimulations & Treatments

Date 7/1/2009	Zone NIOBRARA, ORIGINAL HOLE	Primary Job Type DRILLING/COMPLETION - ORIGINAL
Technical Result Success	Tech Result Details According to Plan	Tech Result Note

Comment
(NIOBRARA): HAD PROBLEMS WITH A FRAC PUMP DURING PAD. HAD TO TAKE OFF LINE AND REPLACE VALVE IN FLUID END BUT WAS ABLE TO KEEP ABOVE 50 BPM WITH OTHER HORSE POWER. JOB WENT WELL WITH NO OTHER ISSUES TO REPORT.

Other In Hole

Run Date	Des	OD (in)	Top (ftKB)	Btm (ftKB)
3/9/2016	Cast Iron Bridge Plug	3.99	6,291.0	6,293.0

Logs

Date	Type	Top, MD (ftKB)	Btm, MD (ftKB)
5/31/2009	Caliper/Comp. Density/Neutron/GR/SP/ML	2,650.0	6,769.0
5/31/2009	DIL/GR/SP/Caliper	557.0	6,769.0
6/9/2009	CBL/CCL/GR	1,060.0	6,715.0
10/3/2014	GYRO	10.0	6,500.0

