

LEGEND:

 PROPOSED LOCATION

Caerus Oil & Gas LLC

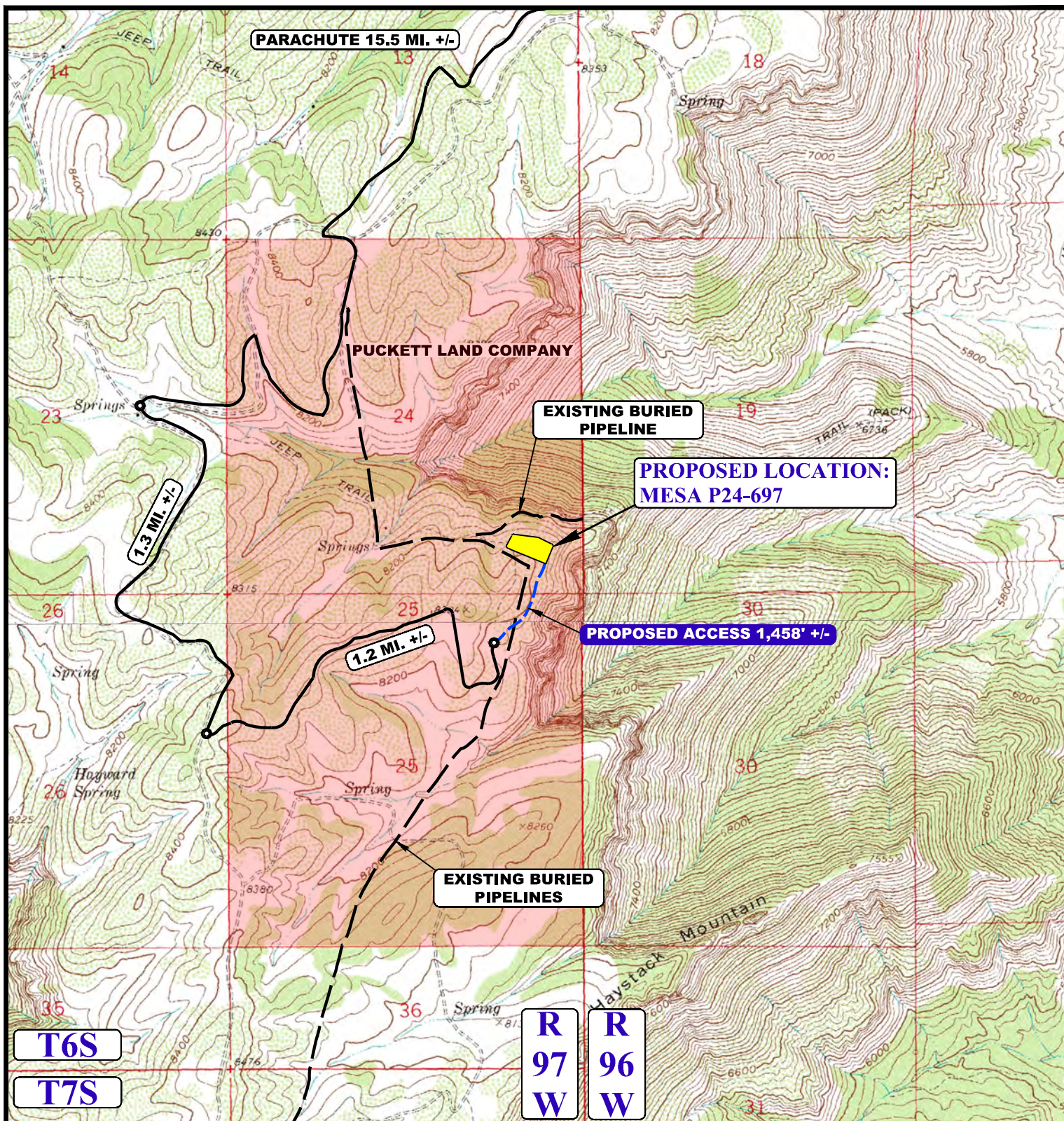
MESA P24-697
SE 1/4 SE 1/4, SECTION 24, T6S, R97W, 6th P.M.
GARFIELD COUNTY, COLORADO

SURVEYED BY	DATE	REVISED BY	DATE
BRIAN BAKER	12-13-15		
DRAWN BY	DATE		
C.D.L.	01-25-16		
SCALE	1 : 100,000		
ACCESS ROAD MAP		TOPO A	

UELS, LLC

Corporate Office * 85 South 200 East
Vernal, UT 84078 * (435) 789-1017





NOTE: PARCEL DATA SHOWN HAS BEEN OBTAINED FROM VARIOUS SOURCES AND SHOULD BE USED FOR MAPPING, GRAPHIC AND PLANNING PURPOSES ONLY. NO WARRANTY IS MADE BY UINTAH ENGINEERING AND LAND SURVEYING (UELS) FOR ACCURACY OF THE PARCEL DATA.

LEGEND:

— EXISTING ROAD
 - - - - - PROPOSED ROAD

Caerus Oil & Gas LLC

MESA P24-697
 SE 1/4 SE 1/4, SECTION 24, T6S, R97W, 6th P.M.
 GARFIELD COUNTY, COLORADO

SURVEYED BY	DATE	REVISED BY	DATE
BRIAN BAKER	12-13-15		
DRAWN BY	DATE		
C.D.L.	01-25-16		
SCALE	1" = 2000'		

ACCESS ROAD MAP

TOPO B



UELS, LLC
 Corporate Office * 85 South 200 East
 Vernal, UT 84078 * (435) 789-1017

