

LEGEND:

 **PROPOSED LOCATION**

Caerus Oil & Gas LLC

MESA E25-697 ON EXISTING PUCKETT 12C-25 PAD
SW 1/4 NW 1/4, SECTION 25, T6S, R97W, 6th P.M.
GARFIELD COUNTY, COLORADO

DRAWN BY: T.I.

DATE DRAWN: 01-06-16

SCALE: 1:100,000

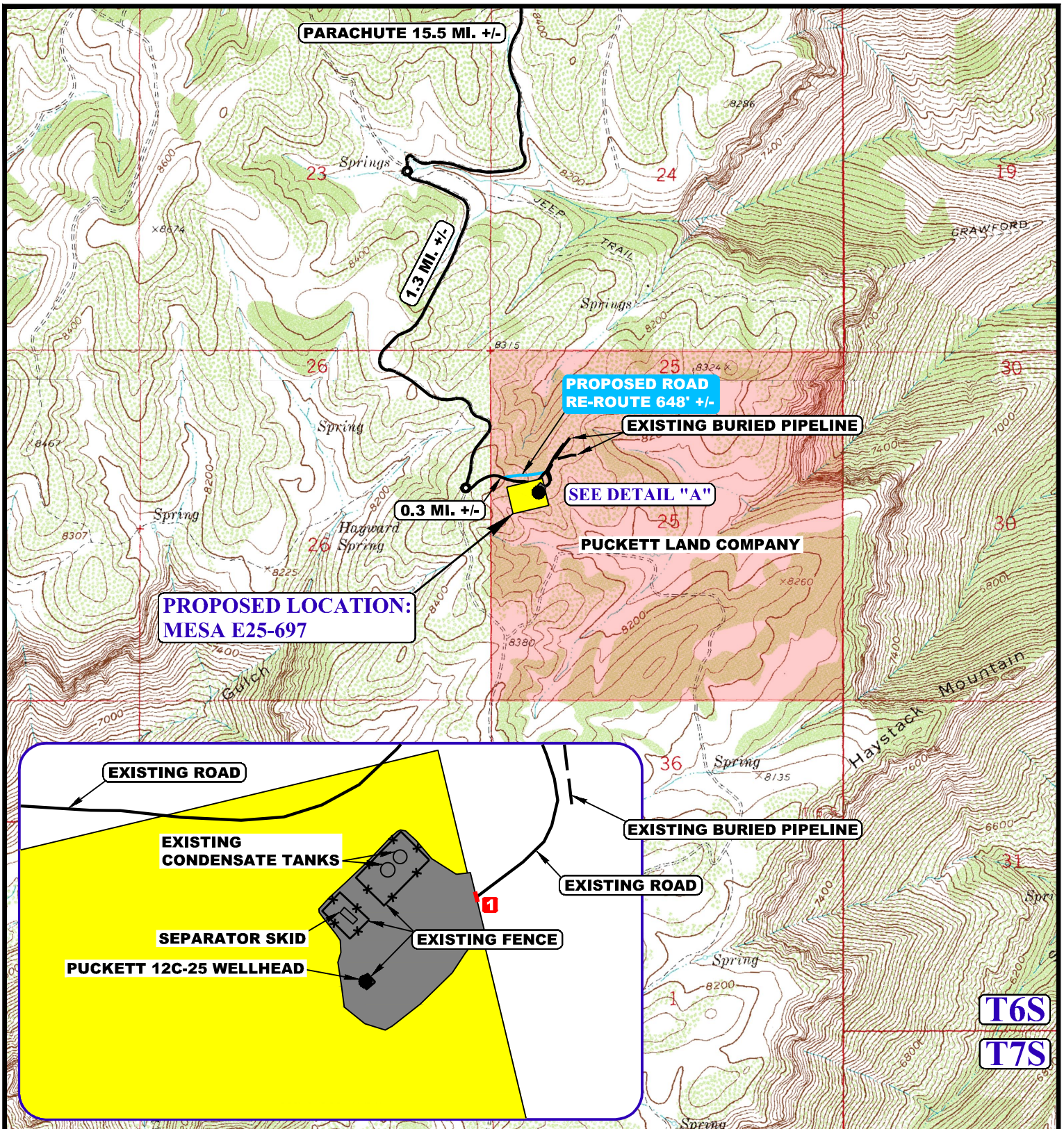
REVISED: 00-00-00

ACCESS ROAD MAP

TOPO A



UELS, LLC
 Corporate Office * 85 South 200 East
 Vernal, UT 84078 * (435) 789-1017



NOTE: PARCEL DATA SHOWN HAS BEEN OBTAINED FROM VARIOUS SOURCES AND SHOULD BE USED FOR MAPPING, GRAPHIC AND PLANNING PURPOSES ONLY. NO WARRANTY IS MADE BY UINTAH ENGINEERING AND LAND SURVEYING (UELS) FOR ACCURACY OF THE PARCEL DATA.

LEGEND:

- EXISTING ROAD
- - - PROPOSED ROAD RE-ROUTE
- - - EXISTING PIPELINE
- * * EXISTING FENCE
- 1** INSTALL 18" CULVERT



Caerus Oil & Gas LLC

MESA E25-697 ON EXISTING PUCKETT 12C-25 PAD
SW 1/4 NW 1/4, SECTION 25, T6S, R97W, 6th P.M.
GARFIELD COUNTY, COLORADO

DRAWN BY: T.I.

DATE DRAWN: 01-06-16

SCALE: 1" = 2000'

REVISED: 00-00-00

ACCESS ROAD MAP

TOPO B



UELS, LLC
Corporate Office * 85 South 200 East
Vernal, UT 84078 * (435) 789-1017