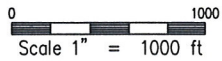
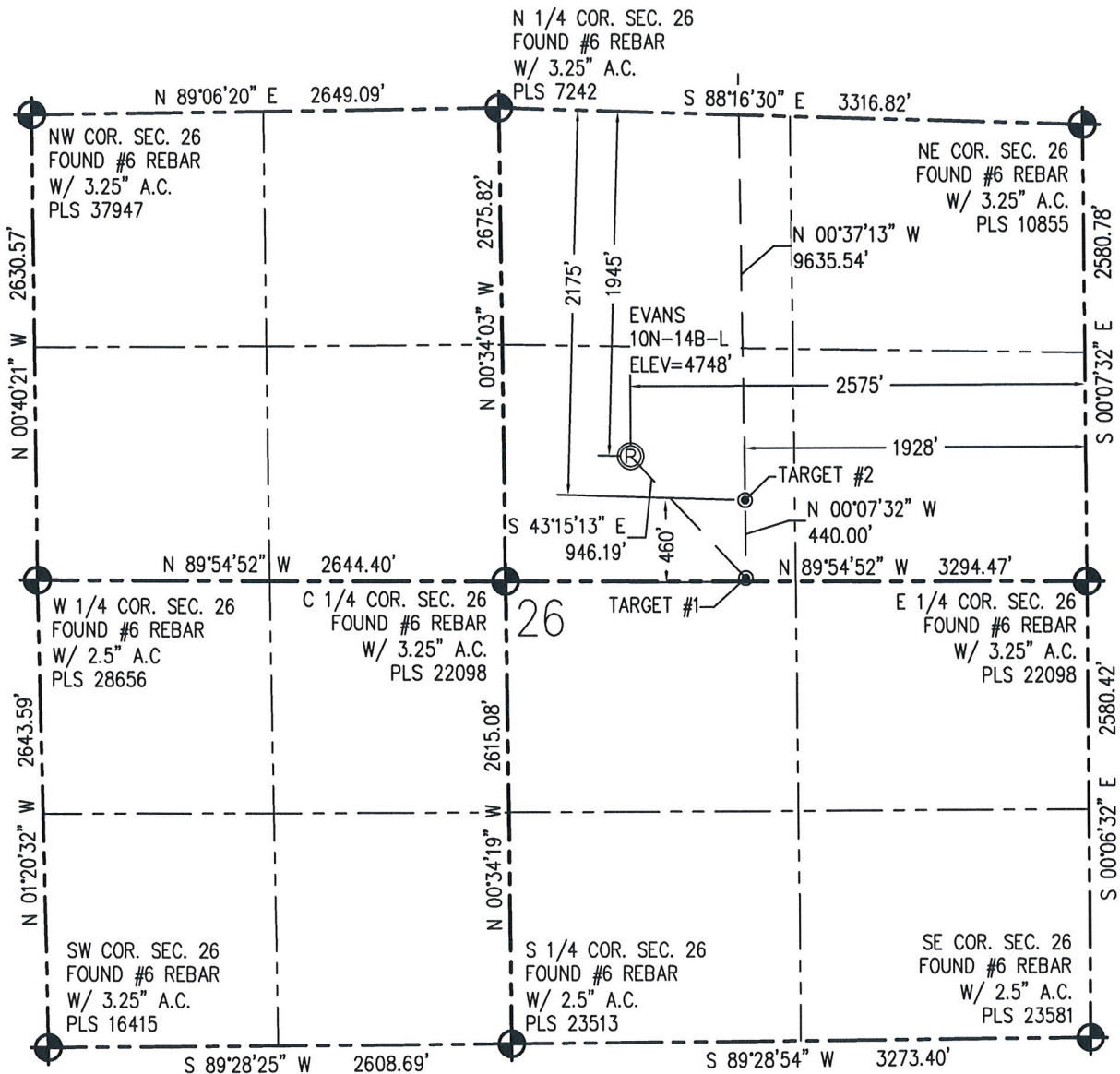


# WELL LOCATION CERTIFICATE

THIS MAP DOES NOT REPRESENT A BOUNDARY SURVEY



**N** IN ACCORDANCE WITH A REQUEST FROM CRAIG RASMUSON - SYNERGY RESOURCES, BASELINE ENGINEERING CORP. HAS DETERMINED THE LOCATION OF THE EVANS 10N-14B-L TO BE 1945' FNL AND 2575' FEL, AS MEASURED AT NINETY (90) DEGREES FROM THE SECTION LINE OF SECTION 26, TOWNSHIP 5 NORTH, RANGE 66 WEST AND THE BOTTOM HOLE LOCATION TO BE 2181' FSL AND 1928' FEL OF SECTION 14, TOWNSHIP 5 NORTH, RANGE 66 WEST, 6TH PRINCIPAL MERIDIAN, WELD COUNTY, COLORADO.

I HEREBY CERTIFY THAT THIS WELL LOCATION CERTIFICATE WAS PREPARED BY ME, OR UNDER MY DIRECT SUPERVISION, THAT THE FIELD WORK WAS COMPLETED ON 6/4/2014, THAT IT IS NOT A LAND SURVEY PLAT OR AN IMPROVEMENT SURVEY PLAT, AND THAT IT IS NOT TO BE RELIED UPON FOR ESTABLISHMENT OF FENCE, BUILDING, OR OTHER FUTURE IMPROVEMENT LINES.

**NOTES:**

- 1) NEAREST CULTURAL ITEMS:  
BUILDING: 1643' SW  
BUILDING UNIT: 1633 SW  
HIGH OCCUPANCY BUILDING UNIT: 3414' NW  
DESIGNATED OUTSIDE ACTIVITY AREA: 5280'+  
PUBLIC ROAD: MESA VERDE DR. 1569' SW  
ABOVE GROUND UTILITY: 316' N  
RAILROAD: 5280'+  
PROPERTY LINE: 725' W
- 2) SURFACE USE: AGRICULTURAL FIELD.
- 3) OPERATOR NAME: BRETT BIRCH.
- 4) THE NEAREST EXISTING WELL IS: RHOARDARMER 1-26B 282' SW.
- 5) Bearings shown are grid bearings of the Colorado State Plane Coordinate System, North Zone, North American Datum 1983/2007. The lined dimensions as contained herein are based upon the "U.S. Survey Foot."
- 6) Ground elevations are based on an observed GPS elevation (NAVD 88 DATUM).
- 7) IMPROVEMENTS: See LOCATION DRAWING for all visible improvements within 500' of disturbed area.

**SURFACE HOLE:**  
LATITUDE: 40.372428° N  
LONGITUDE: 104.744113° W  
PDOP: 1.1  
1/4, 1/4: SW1/4NE1/4

**BOTTOM HOLE:**  
LATITUDE: 40.398172° N  
LONGITUDE: 104.741876° W

**TARGET #1:**  
LATITUDE: 40.370522° N  
LONGITUDE: 104.741807° W  
**TARGET #2:**  
LATITUDE: 40.371729° N  
LONGITUDE: 104.741797° W

**LEGEND**

- FOUND/SET SURVEY MONUMENT PER MONUMENT RECORD EXCEPTIONS NOTED.
- CALCULATED SURVEY MONUMENT POSITION
- CALCULATED DIMENSION

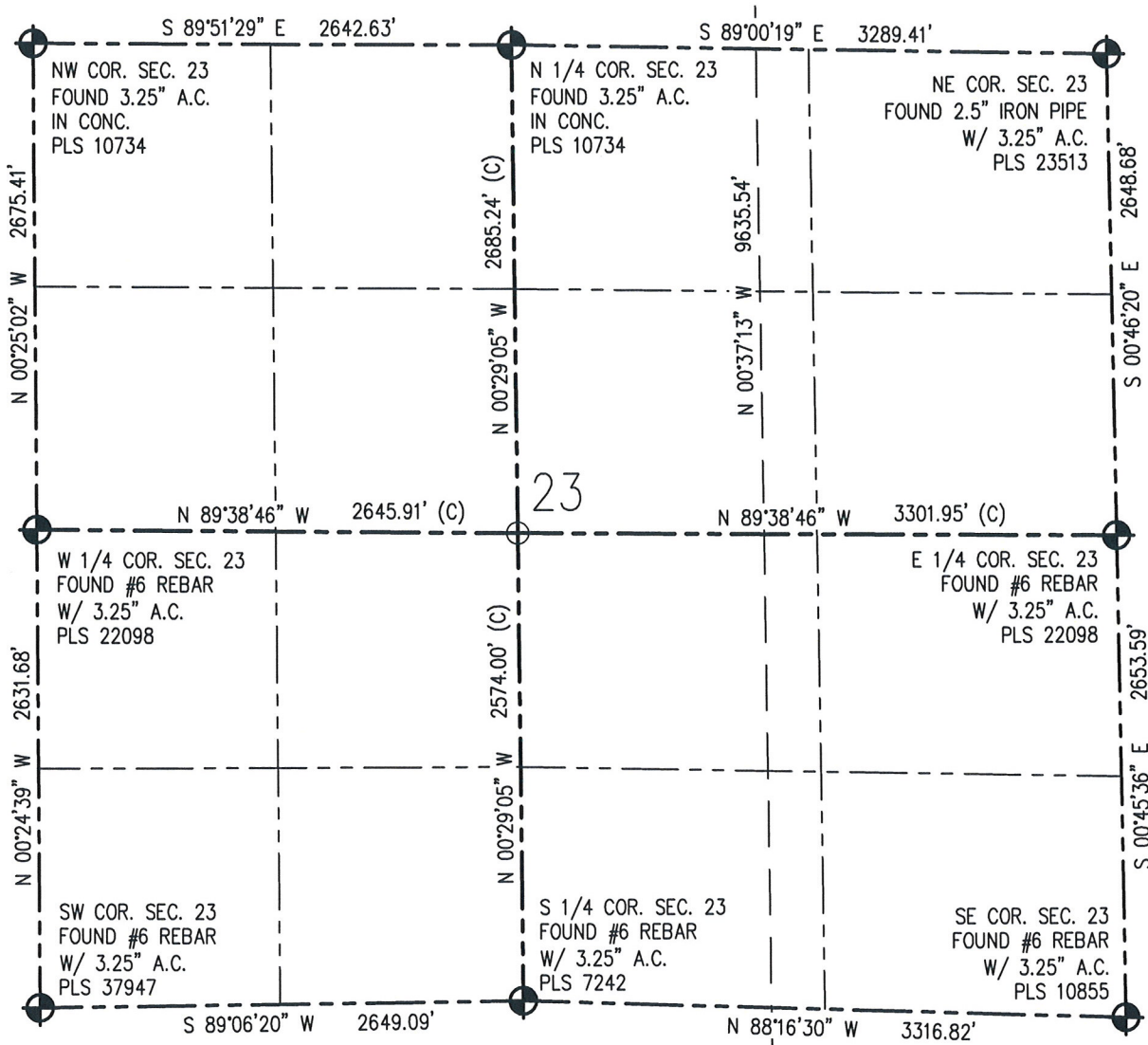


AARON A. DEMO  
Professional Land Surveyor Registration No. 38285  
State of Colorado  
FOR AND ON BEHALF OF BASELINE ENGINEERING CORP.

Completed  
4/6/2016

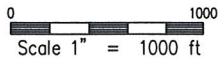
# WELL LOCATION CERTIFICATE

THIS MAP DOES NOT REPRESENT A BOUNDARY SURVEY



IN ACCORDANCE WITH A REQUEST FROM CRAIG RASMUSON - SYNERGY RESOURCES, BASELINE ENGINEERING CORP. HAS DETERMINED THE LOCATION OF THE EVANS 10N-14B-L TO BE 1945' FNL AND 2575' FEL, AS MEASURED AT NINETY (90) DEGREES FROM THE SECTION LINE OF SECTION 26, TOWNSHIP 5 NORTH, RANGE 66 WEST AND THE BOTTOM HOLE LOCATION TO BE 2181' FSL AND 1928' FEL OF SECTION 14, TOWNSHIP 5 NORTH, RANGE 66 WEST, 6TH PRINCIPAL MERIDIAN, WELD COUNTY, COLORADO.

I HEREBY CERTIFY THAT THIS WELL LOCATION CERTIFICATE WAS PREPARED BY ME, OR UNDER MY DIRECT SUPERVISION, THAT THE FIELD WORK WAS COMPLETED ON 6/4/2014, THAT IT IS NOT A LAND SURVEY PLAT OR AN IMPROVEMENT SURVEY PLAT, AND THAT IT IS NOT TO BE RELIED UPON FOR ESTABLISHMENT OF FENCE, BUILDING, OR OTHER FUTURE IMPROVEMENT LINES.



**NOTES:**

- 1) NEAREST CULTURAL ITEMS:  
BUILDING: 1643' SW  
BUILDING UNIT: 1633 SW  
HIGH OCCUPANCY BUILDING UNIT: 3414' NW  
DESIGNATED OUTSIDE ACTIVITY AREA: 5280'+  
PUBLIC ROAD: MESA VERDE DR. 1569' SW  
ABOVE GROUND UTILITY: 316' N  
RAILROAD: 5280'+  
PROPERTY LINE: 725' W
- 2) SURFACE USE: AGRICULTURAL FIELD.
- 3) OPERATOR NAME: BRETT BIRCH.
- 4) THE NEAREST EXISTING WELL IS: RHOARDARMER 1-26B 282' SW.
- 5) Bearings shown are grid bearings of the Colorado State Plane Coordinate System, North Zone, North American Datum 1983/2007. The lineal dimensions as contained herein are based upon the "U.S. Survey Foot."
- 6) Ground elevations are based on an observed GPS elevation (NAVD 88 DATUM).
- 7) IMPROVEMENTS: See LOCATION DRAWING for all visible improvements within 500' of disturbed area.

**SURFACE HOLE:**  
LATITUDE: 40.372428° N  
LONGITUDE: 104.744113° W  
PDOP: 1.1  
1/4, 1/4: SW1/4NE1/4

**TARGET #1:**  
LATITUDE: 40.370522° N  
LONGITUDE: 104.741807° W  
**TARGET #2:**  
LATITUDE: 40.371729° N  
LONGITUDE: 104.741797° W

**BOTTOM HOLE:**  
LATITUDE: 40.398172° N  
LONGITUDE: 104.741876° W

**LEGEND**

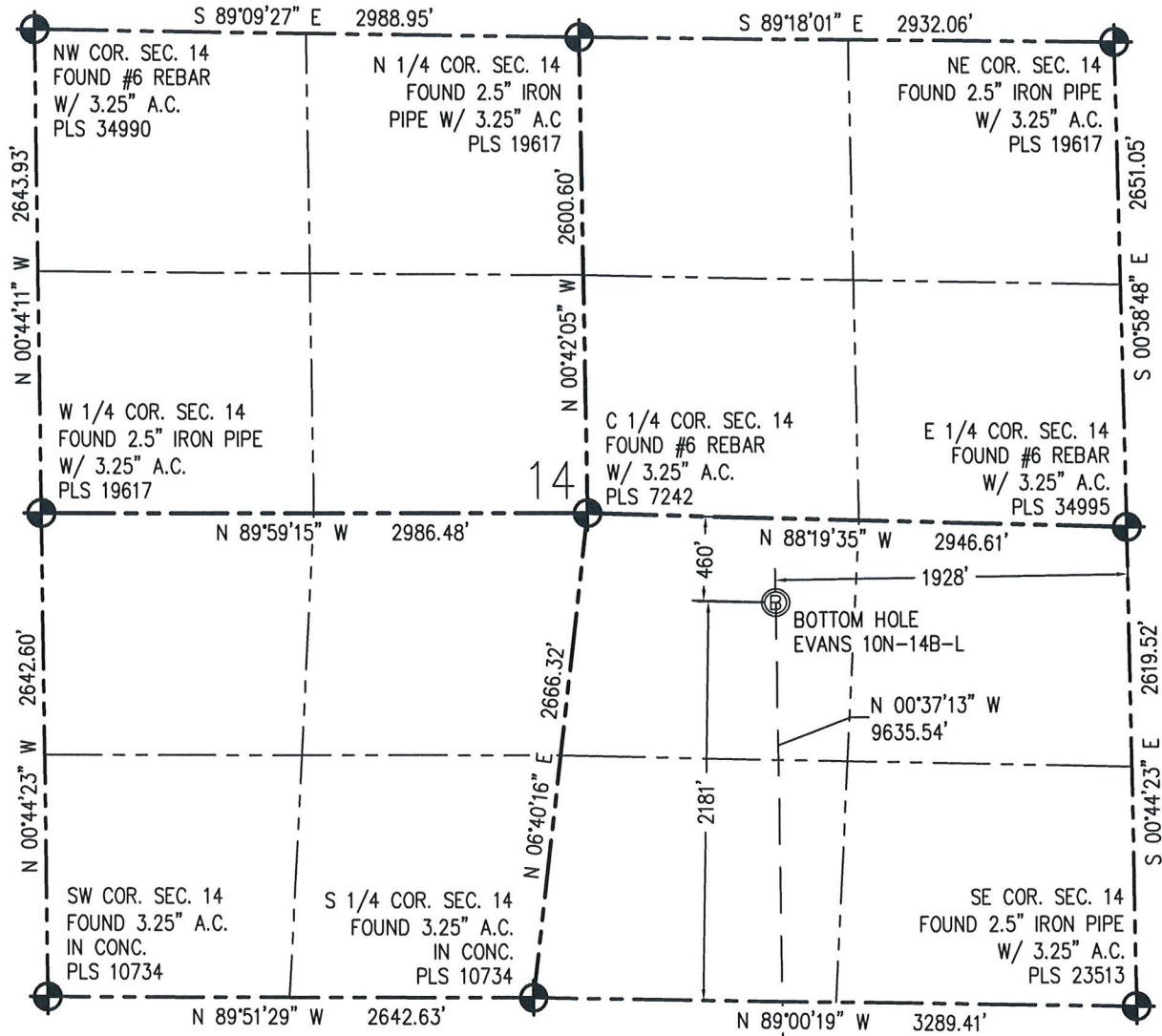
- - FOUND/SET SURVEY MONUMENT PER MONUMENT RECORD EXCEPTIONS NOTED.
- - CALCULATED SURVEY MONUMENT POSITION
- (C) - CALCULATED DIMENSION



AARON A. DEMO  
Professional Land Surveyor Registration No. 38285  
State of Colorado  
Completed 4/6/2016  
FOR AND ON BEHALF OF BASELINE ENGINEERING CORP.

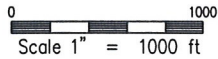
# WELL LOCATION CERTIFICATE

THIS MAP DOES NOT REPRESENT A BOUNDARY SURVEY



**N** IN ACCORDANCE WITH A REQUEST FROM CRAIG RASMUSON - SYNERGY RESOURCES, BASELINE ENGINEERING CORP. HAS DETERMINED THE LOCATION OF THE EVANS 10N-14B-L TO BE 1945' FNL AND 2575' FEL, AS MEASURED AT NINETY (90) DEGREES FROM THE SECTION LINE OF SECTION 26, TOWNSHIP 5 NORTH, RANGE 66 WEST AND THE BOTTOM HOLE LOCATION TO BE 2181' FSL AND 1928' FEL OF SECTION 14, TOWNSHIP 5 NORTH, RANGE 66 WEST, 6TH PRINCIPAL MERIDIAN, WELD COUNTY, COLORADO.

I HEREBY CERTIFY THAT THIS WELL LOCATION CERTIFICATE WAS PREPARED BY ME, OR UNDER MY DIRECT SUPERVISION, THAT THE FIELD WORK WAS COMPLETED ON 6/4/2014, THAT IT IS NOT A LAND SURVEY PLAT OR AN IMPROVEMENT SURVEY PLAT, AND THAT IT IS NOT TO BE RELIED UPON FOR ESTABLISHMENT OF FENCE, BUILDING, OR OTHER FUTURE IMPROVEMENT LINES.



**NOTES:**

- 1) NEAREST CULTURAL ITEMS:  
BUILDING: 1643' SW  
BUILDING UNIT: 1633 SW  
HIGH OCCUPANCY BUILDING UNIT: 3414' NW  
DESIGNATED OUTSIDE ACTIVITY AREA: 5280'+  
PUBLIC ROAD: MESA VERDE DR. 1569' SW  
ABOVE GROUND UTILITY: 316' N  
RAILROAD: 5280'+  
PROPERTY LINE: 725' W
- 2) SURFACE USE: AGRICULTURAL FIELD.
- 3) OPERATOR NAME: BRETT BIRCH.
- 4) THE NEAREST EXISTING WELL IS: RHOADARMER 1-26B 282' SW.
- 5) Bearings shown are grid bearings of the Colorado State Plane Coordinate System, North Zone, North American Datum 1983/2007. The lineal dimensions as contained herein are based upon the "U.S. Survey Foot."
- 6) Ground elevations are based on anobserved GPS elevation (NAVD 88 DATUM).
- 7) IMPROVEMENTS: See LOCATION DRAWING for all visible improvements within 500' of disturbed area.

**SURFACE HOLE:**  
LATITUDE: 40.372428° N  
LONGITUDE: 104.744113° W  
PDOP: 1.1  
1/4, 1/4: SW1/4NE1/4

**TARGET #1:**  
LATITUDE: 40.370522° N  
LONGITUDE: 104.741807° W

**TARGET #2:**  
LATITUDE: 40.371729° N  
LONGITUDE: 104.741797° W

**BOTTOM HOLE:**  
LATITUDE: 40.398172° N  
LONGITUDE: 104.741876° W

**LEGEND**

- FOUND/SET SURVEY MONUMENT PER MONUMENT RECORD EXCEPTIONS NOTED.
- CALCULATED SURVEY MONUMENT POSITION
- CALCULATED DIMENSION



AARON A. DEMO  
Professional Land Surveyor Registration No. 38285  
State of Colorado  
Completed 4/6/2016  
FOR AND ON BEHALF OF BASELINE ENGINEERING CORP.