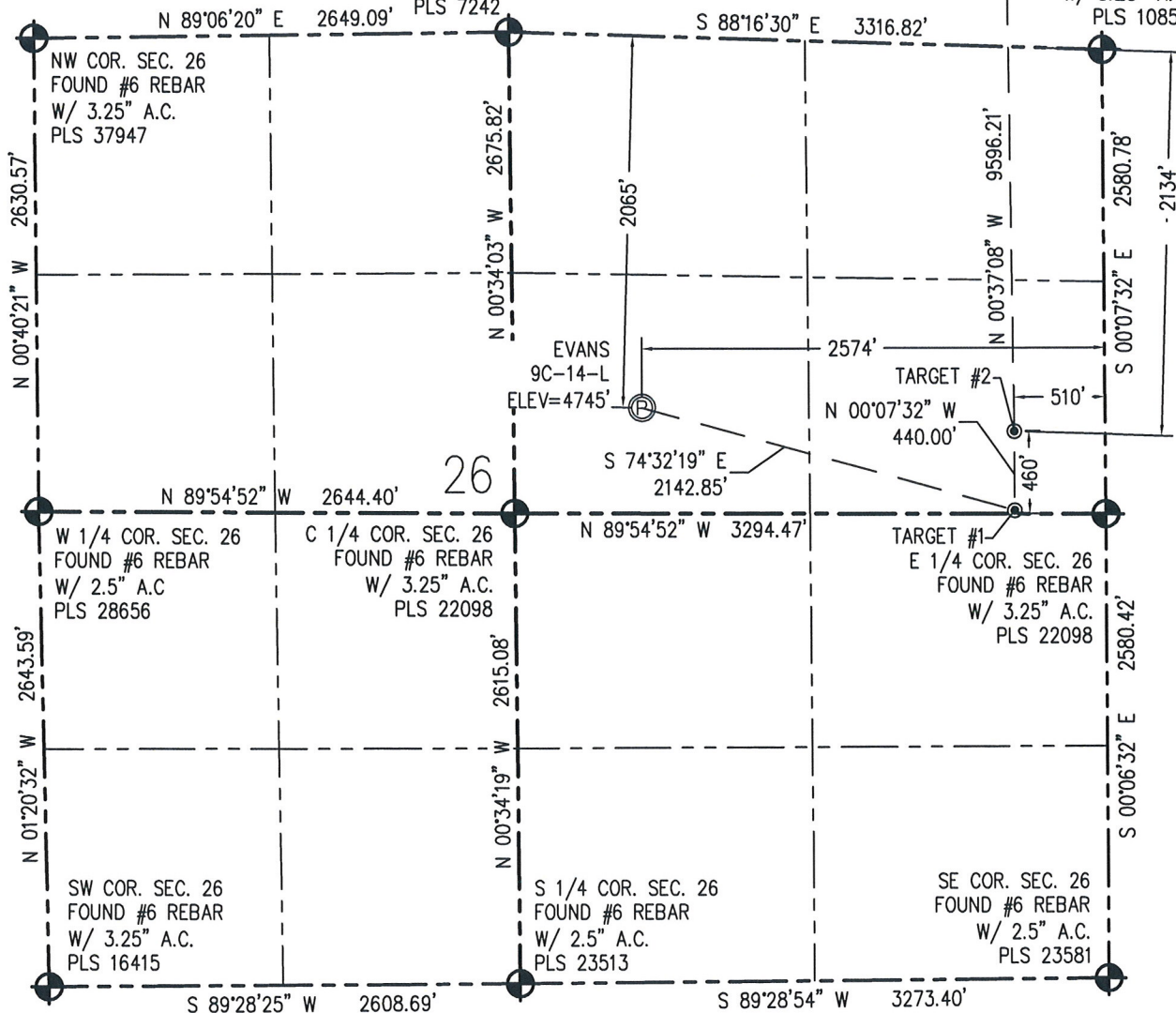


**THIS MAP DOES NOT REPRESENT A BOUNDARY SURVEY**

NE COR. SEC. 26  
FOUND #6 REBAR  
W/ 3.25" A.C.  
PLS 10855



N IN ACCORDANCE WITH A REQUEST FROM CRAIG RASMUSON - SYNERGY RESOURCES, BASELINE ENGINEERING CORP. HAS DETERMINED THE LOCATION OF THE EVANS 9C-14-L TO BE 2065' FNL AND 2574' FEL, AS MEASURED AT NINETY (90) DEGREES FROM THE SECTION LINE OF SECTION 26, TOWNSHIP 5 NORTH, RANGE 66 WEST AND THE BOTTOM HOLE LOCATION TO BE 2164' FSL AND 510' FEL OF SECTION 14, TOWNSHIP 5 NORTH, RANGE 66 WEST, 6TH PRINCIPAL MERIDIAN, WELD COUNTY, COLORADO.

I HEREBY CERTIFY THAT THIS WELL LOCATION CERTIFICATE WAS PREPARED BY ME, OR UNDER MY DIRECT SUPERVISION, THAT THE FIELD WORK WAS COMPLETED ON 6/4/2014, THAT IT IS NOT A LAND SURVEY PLAT OR AN IMPROVEMENT SURVEY PLAT, AND THAT IT IS NOT TO BE RELIED UPON FOR ESTABLISHMENT OF FENCE, BUILDING, OR OTHER FUTURE IMPROVEMENT LINES.

SURFACE HOLE:  
LATITUDE: 40.372099° N  
LONGITUDE: 104.744113° W  
PDOP: 1.0  
1/4, 1/4: SW1/4NE1/4

TARGET #1:  
LATITUDE: 40.370483° N  
LONGITUDE: 104.736720° W

TARGET #2:  
LATITUDE: 40.371690° N  
LONGITUDE: 104.736710° W

BOTTOM HOLE:  
LATITUDE: 40.398025° N  
LONGITUDE: 104.736786° W

### LEGEND

AARON A. DEMO

Professional Land Surveyor Registration No. 38285

Professional Land  
State of Colorado

FOR AND ON BEHALF OF BASELINE ENGINEERING CORP.

Completed

4/6/2016

PROJECT #: Synergy.252

1) NEAREST CULTURAL ITEMS:  
BUILDING: 1578' SW  
BUILDING UNIT: 1568 SW

BUILDING UNIT: 1500' SW  
 HIGH OCCUPANCY BUILDING UNIT: 3530' NW  
 DESIGNATED OUTSIDE ACTIVITY AREA: 5280'+  
 PUBLIC ROAD: MESA VERDE DR. 1503' SW  
 ABOVE GROUND UTILITY: 436' N  
 RAILROAD: 5280'+  
 PROPERTY LINE: 725' W

2) SURFACE USE: AGRICULTURAL FIELD.

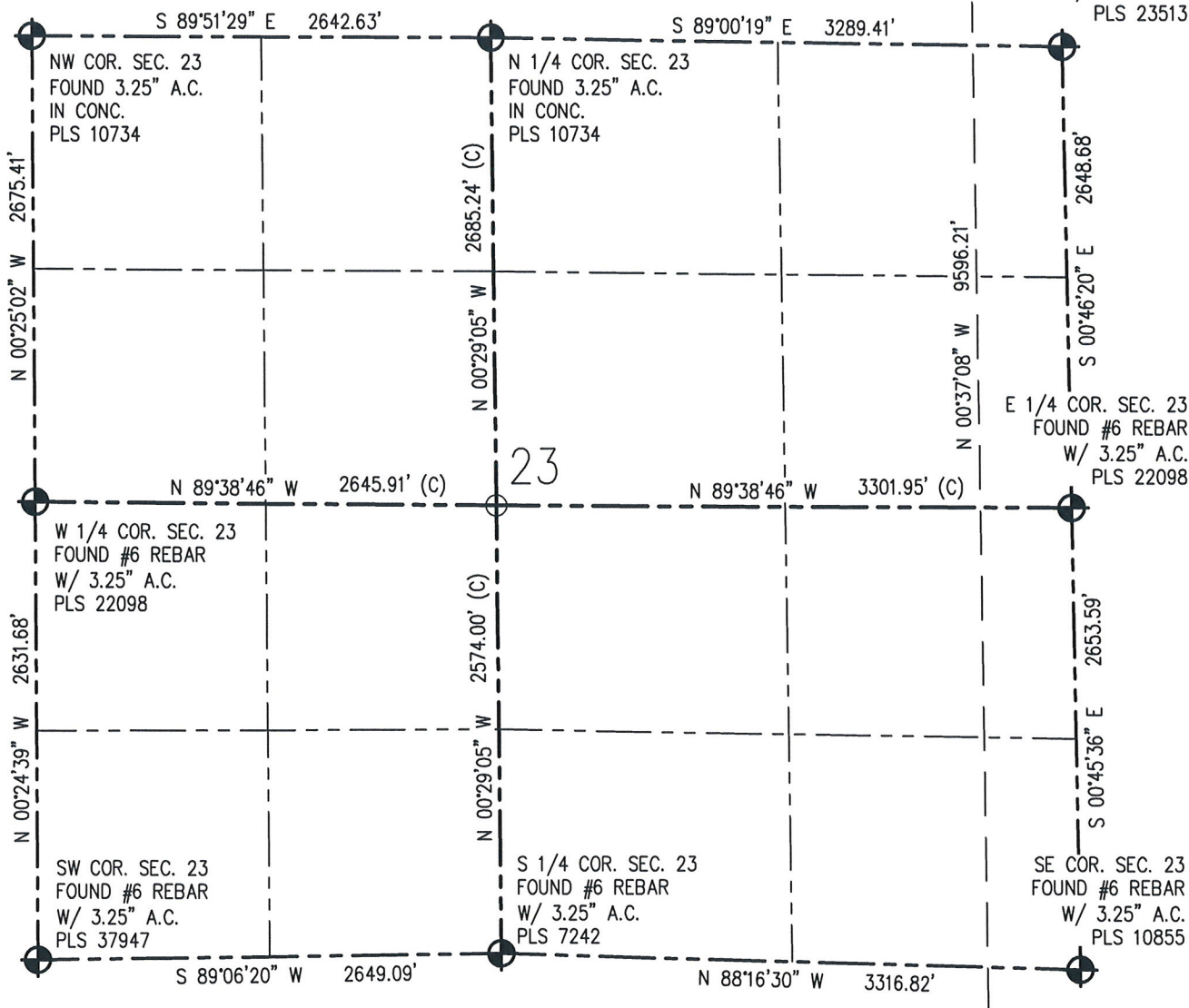
3) OPERATOR NAME: BRETT BIRCH.

4) THE NEAREST EXISTING WELL IS: RHOADARMER 1-26B 182' SW.

5) Bearings shown are grid bearings of the Colorado State Plane Coordinate System, North Zone, North American Datum 1983/2007. The lineal dimensions as contained herein are based upon the "U.S. Survey Foot."

6) Ground elevations are based on an observed GPS elevation (NAVD 88 DATUM).  
7) IMPROVEMENTS: See LOCATION DRAWING for all visible improvements within 500' of disturbed area.



**WELL LOCATION CERTIFICATE**  
THIS MAP DOES NOT REPRESENT A BOUNDARY SURVEYNE COR. SEC. 23  
FOUND 2.5" IRON PIPE  
W/ 3.25" A.C.  
PLS 23513

0 1000  
Scale 1" = 1000 ft



IN ACCORDANCE WITH A REQUEST FROM CRAIG RASMUSON - SYNERGY RESOURCES, BASELINE ENGINEERING CORP. HAS DETERMINED THE LOCATION OF THE EVANS 9C-14-L TO BE 2065' FNL AND 2574' FEL, AS MEASURED AT NINETY (90) DEGREES FROM THE SECTION LINE OF SECTION 26, TOWNSHIP 5 NORTH, RANGE 66 WEST AND THE BOTTOM HOLE LOCATION TO BE 2164' FSL AND 510' FEL OF SECTION 14, TOWNSHIP 5 NORTH, RANGE 66 WEST, 6TH PRINCIPAL MERIDIAN, WELD COUNTY, COLORADO.

I HEREBY CERTIFY THAT THIS WELL LOCATION CERTIFICATE WAS PREPARED BY ME, OR UNDER MY DIRECT SUPERVISION, THAT THE FIELD WORK WAS COMPLETED ON 6/4/2014, THAT IT IS NOT A LAND SURVEY PLAT OR AN IMPROVEMENT SURVEY PLAT, AND THAT IT IS NOT TO BE RELIED UPON FOR ESTABLISHMENT OF FENCE, BUILDING, OR OTHER FUTURE IMPROVEMENT LINES.

## NOTES:

- 1) NEAREST CULTURAL ITEMS:  
BUILDING: 1578' SW  
BUILDING UNIT: 1568 SW  
HIGH OCCUPANCY BUILDING UNIT: 3530' NW  
DESIGNATED OUTSIDE ACTIVITY AREA: 5280'+  
PUBLIC ROAD: MESA VERDE DR. 1503' SW  
ABOVE GROUND UTILITY: 436' N  
RAILROAD: 5280'+  
PROPERTY LINE: 725' W
- 2) SURFACE USE: AGRICULTURAL FIELD.
- 3) OPERATOR NAME: BRETT BIRCH.
- 4) THE NEAREST EXISTING WELL IS: RHOARDARMER 1-26B 182' SW.
- 5) Bearings shown are grid bearings of the Colorado State Plane Coordinate System, North Zone, North American Datum 1983/2007. The lineal dimensions as contained herein are based upon the "U.S. Survey Foot."
- 6) Ground elevations are based on an observed GPS elevation (NAVD 88 DATUM).
- 7) IMPROVEMENTS: See LOCATION DRAWING for all visible improvements within 500' of disturbed area.

SURFACE HOLE:  
LATITUDE: 40.372099° N  
LONGITUDE: 104.744113° W  
PDOP: 1.0  
1/4, 1/4: SW1/4NE1/4

BOTTOM HOLE:  
LATITUDE: 40.398025° N  
LONGITUDE: 104.736786° W

TARGET #1:  
LATITUDE: 40.370483° N  
LONGITUDE: 104.736720° W  
TARGET #2:  
LATITUDE: 40.371690° N  
LONGITUDE: 104.736710° W

## LEGEND

- - FOUND/SET SURVEY MONUMENT PER MONUMENT RECORD EXCEPTIONS NOTED.
- - CALCULATED SURVEY MONUMENT POSITION
- (C) - CALCULATED DIMENSION

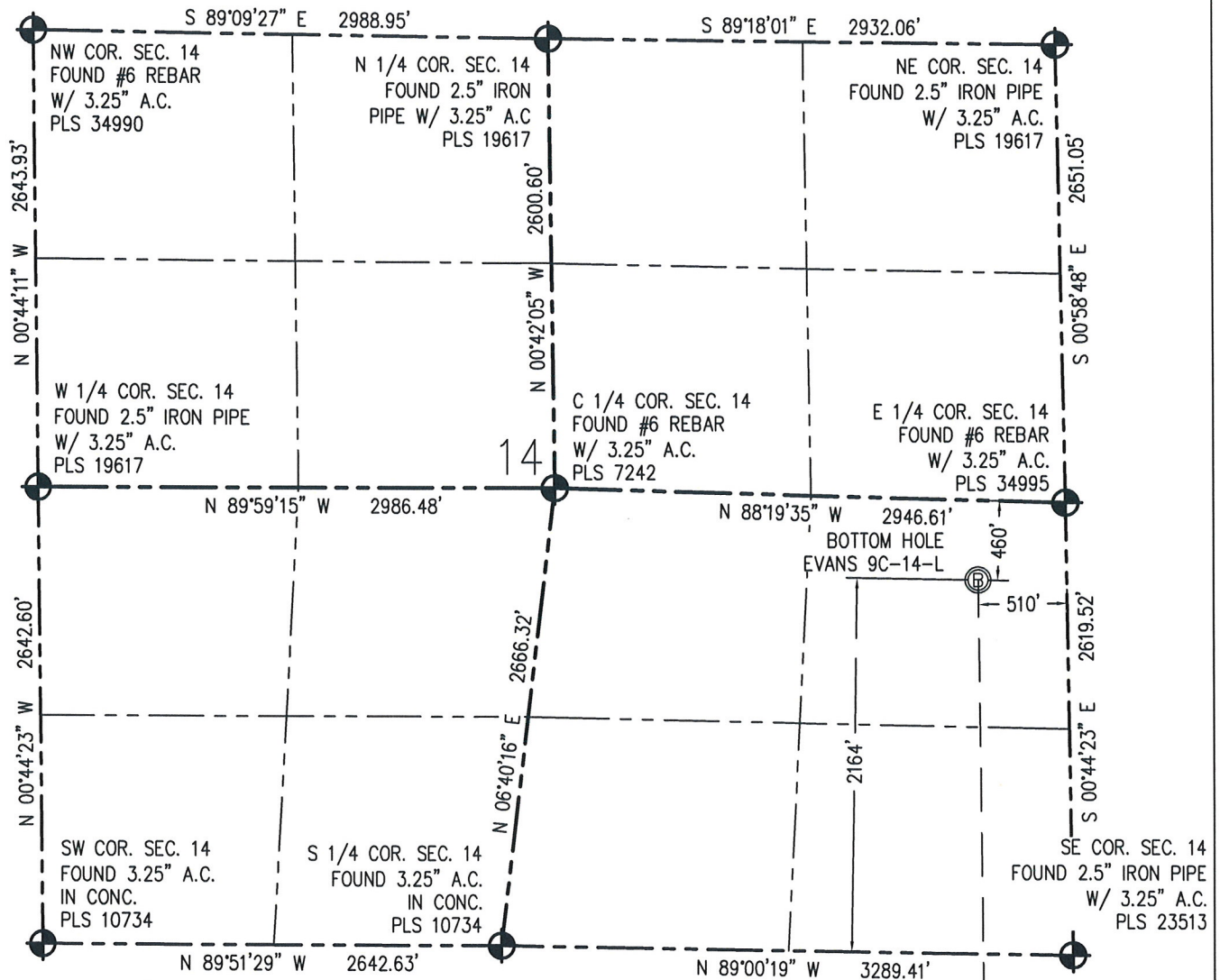


AARON A. DEMO  
Professional Land Surveyor Registration No. 38285  
State of Colorado  
FOR AND ON BEHALF OF BASELINE ENGINEERING CORP.

Completed  
4/6/2016

PROJECT #: Synergy 252



**WELL LOCATION CERTIFICATE**  
THIS MAP DOES NOT REPRESENT A BOUNDARY SURVEY

0 1000  
Scale 1" = 1000 ft

**NOTES:**

- 1) NEAREST CULTURAL ITEMS:  
BUILDING: 1578' SW  
BUILDING UNIT: 1568 SW  
HIGH OCCUPANCY BUILDING UNIT: 3530' NW  
DESIGNATED OUTSIDE ACTIVITY AREA: 5280'+  
PUBLIC ROAD: MESA VERDE DR. 1503' SW  
ABOVE GROUND UTILITY: 436' N  
RAILROAD: 5280'+  
PROPERTY LINE: 725' W
- 2) SURFACE USE: AGRICULTURAL FIELD.
- 3) OPERATOR NAME: BRETT BIRCH.
- 4) THE NEAREST EXISTING WELL IS: RHOADARMER 1-26B 182' SW.
- 5) Bearings shown are grid bearings of the Colorado State Plane Coordinate System, North Zone, North American Datum 1983/2007. The lineal dimensions as contained herein are based upon the "U.S. Survey Foot."
- 6) Ground elevations are based on an observed GPS elevation (NAVD 88 DATUM).
- 7) IMPROVEMENTS: See LOCATION DRAWING for all visible improvements within 500' of disturbed area.

IN ACCORDANCE WITH A REQUEST FROM CRAIG RASMUSON - SYNERGY RESOURCES, BASELINE ENGINEERING CORP. HAS DETERMINED THE LOCATION OF THE EVANS 9C-14-L TO BE 2065' FNL AND 2574' FEL, AS MEASURED AT NINETY (90) DEGREES FROM THE SECTION LINE OF SECTION 26, TOWNSHIP 5 NORTH, RANGE 66 WEST AND THE BOTTOM HOLE LOCATION TO BE 2164' FSL AND 510' FEL OF SECTION 14, TOWNSHIP 5 NORTH, RANGE 66 WEST, 6TH PRINCIPAL MERIDIAN, WELD COUNTY, COLORADO.

I HEREBY CERTIFY THAT THIS WELL LOCATION CERTIFICATE WAS PREPARED BY ME, OR UNDER MY DIRECT SUPERVISION, THAT THE FIELD WORK WAS COMPLETED ON 6/4/2014, THAT IT IS NOT A LAND SURVEY PLAT OR AN IMPROVEMENT SURVEY PLAT, AND THAT IT IS NOT TO BE RELIED UPON FOR ESTABLISHMENT OF FENCE, BUILDING, OR OTHER FUTURE IMPROVEMENT LINES.

**SURFACE HOLE:**  
LATITUDE: 40.372099° N  
LONGITUDE: 104.744113° W  
PDOP: 1.0  
1/4, 1/4: SW1/4NE1/4

**BOTTOM HOLE:**  
LATITUDE: 40.398025° N  
LONGITUDE: 104.736786° W

**TARGET #1:**  
LATITUDE: 40.370483° N  
LONGITUDE: 104.736720° W  
**TARGET #2:**  
LATITUDE: 40.371690° N  
LONGITUDE: 104.736710° W

**LEGEND**

- - FOUND/SET SURVEY MONUMENT PER MONUMENT RECORD EXCEPTIONS NOTED.
- - CALCULATED SURVEY MONUMENT POSITION
- (c) - CALCULATED DIMENSION



AARON A. DEMO  
Professional Land Surveyor Registration No. 38285  
State of Colorado  
FOR AND ON BEHALF OF BASELINE ENGINEERING CORP.

Completed  
4/6/2016

PROJECT #: Synergy.252