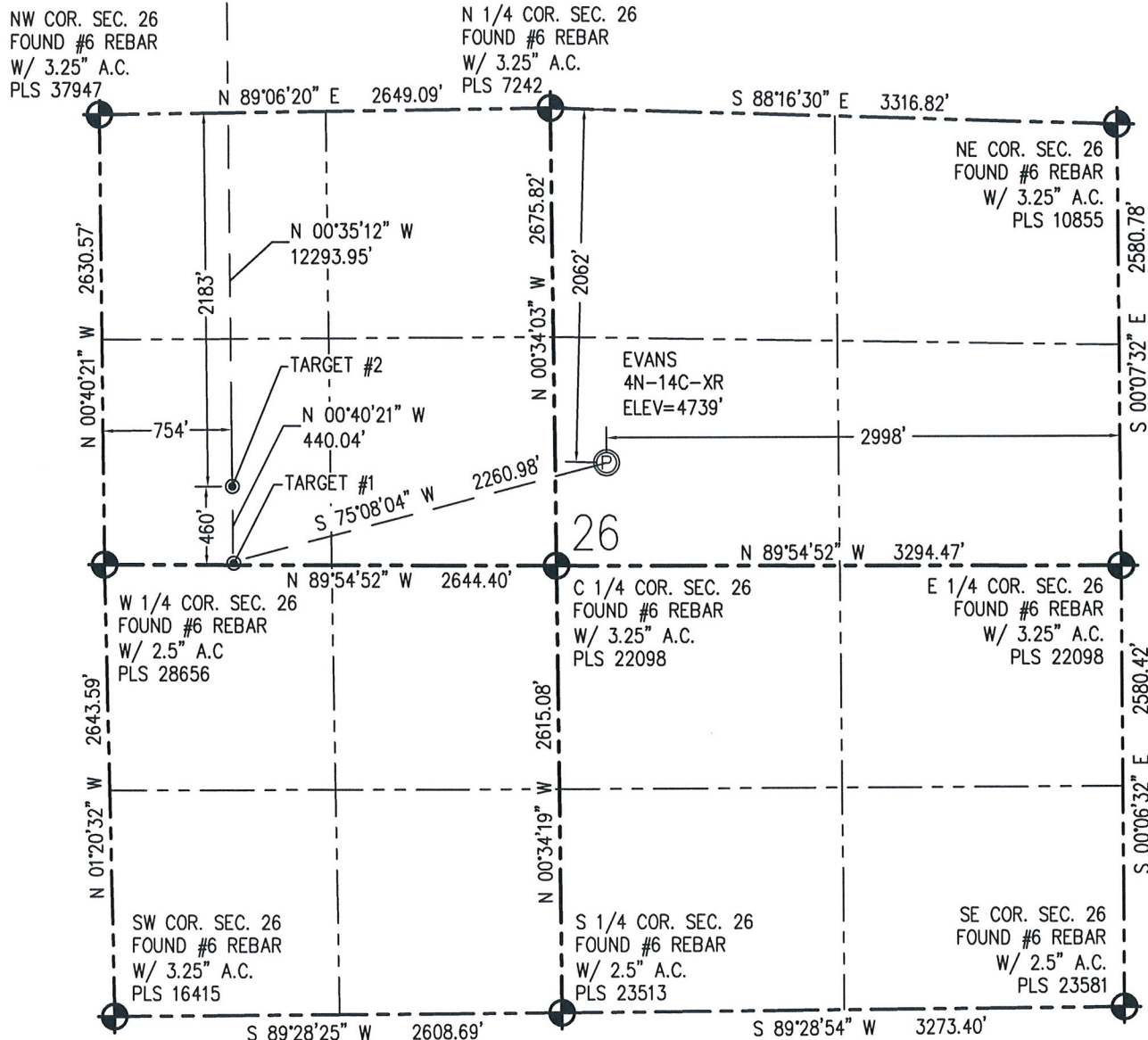


## WELL LOCATION CERTIFICATE

THIS MAP DOES NOT REPRESENT A BOUNDARY SURVEY



0 1000  
Scale 1" = 1000 ft



IN ACCORDANCE WITH A REQUEST FROM CRAIG RASMUSON - SYNERGY RESOURCES, BASELINE ENGINEERING CORP. HAS DETERMINED THE LOCATION OF THE EVANS 4N-14C-XR TO BE 2062' FNL AND 2998' FEL, AS MEASURED AT NINETY (90) DEGREES FROM THE SECTION LINE OF SECTION 26, TOWNSHIP 5 NORTH, RANGE 66 WEST AND THE BOTTOM HOLE LOCATION TO BE 460' FNL AND 754' FWL OF SECTION 14, TOWNSHIP 5 NORTH, RANGE 66 WEST, 6TH PRINCIPAL MERIDIAN, WELD COUNTY, COLORADO.

I HEREBY CERTIFY THAT THIS WELL LOCATION CERTIFICATE WAS PREPARED BY ME, OR UNDER MY DIRECT SUPERVISION, THAT THE FIELD WORK WAS COMPLETED ON 6/4/2014, THAT IT IS NOT A LAND SURVEY PLAT OR AN IMPROVEMENT SURVEY PLAT, AND THAT IT IS NOT TO BE RELIED UPON FOR ESTABLISHMENT OF FENCE, BUILDING, OR OTHER FUTURE IMPROVEMENT LINES.

## NOTES:

- 1) NEAREST CULTURAL ITEMS:  
BUILDING: 1245' SW  
BUILDING UNIT: 1237 SW  
HIGH OCCUPANCY BUILDING UNIT: 3437' NW  
DESIGNATED OUTSIDE ACTIVITY AREA: 5280'+  
PUBLIC ROAD: MESA VERDE DR. 1175' SW  
ABOVE GROUND UTILITY: 415' N  
RAILROAD: 5280'+  
PROPERTY LINE: 301' W
- 2) SURFACE USE: AGRICULTURAL FIELD.
- 3) OPERATOR NAME: BRETT BIRCH.
- 4) THE NEAREST EXISTING WELL IS: RHOARDARMER 1-26B 338' SE.
- 5) Bearings shown are grid bearings of the Colorado State Plane Coordinate System, North Zone, North American Datum 1983/2007. The lineal dimensions as contained herein are based upon the "U.S. Survey Foot."
- 6) Ground elevations are based on an observed GPS elevation (NAVD 88 DATUM).
- 7) IMPROVEMENTS: See LOCATION DRAWING for all visible improvements within 500' of disturbed area.

SURFACE HOLE:  
LATITUDE: 40.372152° N  
LONGITUDE: 104.745634° W  
PDOP: 1.1  
1/4, 1/4: SW1/4NE1/4

BOTTOM HOLE:  
LATITUDE: 40.405557° N  
LONGITUDE: 104.753577° W

TARGET #1:  
LATITUDE: 40.370611° N  
LONGITUDE: 104.753492° W  
TARGET #2:  
LATITUDE: 40.371819° N  
LONGITUDE: 104.753497° W

## LEGEND

- - FOUND/SET SURVEY MONUMENT PER MONUMENT RECORD EXCEPTIONS NOTED.
- - CALCULATED SURVEY MONUMENT POSITION
- (C) - CALCULATED DIMENSION



AARON A. DEMO  
Professional Land Surveyor Registration No. 38285  
State of Colorado  
FOR AND ON BEHALF OF BASELINE ENGINEERING CORP.

Completed  
4/6/2016

PROJECT #: Synergy.252

**WELL LOCATION CERTIFICATE**  
THIS MAP DOES NOT REPRESENT A BOUNDARY SURVEYNW COR. SEC. 23  
FOUND 3.25" A.C.  
IN CONC.  
PLS 10734W 1/4 COR. SEC. 23  
FOUND #6 REBAR  
W/ 3.25" A.C.  
PLS 22098SW COR. SEC. 23  
FOUND #6 REBAR  
W/ 3.25" A.C.  
PLS 37947N 1/4 COR. SEC. 23  
FOUND 3.25" A.C.  
IN CONC.  
PLS 10734NE COR. SEC. 23  
FOUND 2.5" IRON PIPE  
W/ 3.25" A.C.  
PLS 23513E 1/4 COR. SEC. 23  
FOUND #6 REBAR  
W/ 3.25" A.C.  
PLS 22098SE COR. SEC. 23  
FOUND #6 REBAR  
W/ 3.25" A.C.  
PLS 10855

23

0 1000  
Scale 1" = 1000 ft

## NOTES:

- 1) NEAREST CULTURAL ITEMS:  
BUILDING: 1245' SW  
BUILDING UNIT: 1237 SW  
HIGH OCCUPANCY BUILDING UNIT: 3437' NW  
DESIGNATED OUTSIDE ACTIVITY AREA: 5280'+  
PUBLIC ROAD: MESA VERDE DR. 1175' SW  
ABOVE GROUND UTILITY: 415' N  
RAILROAD: 5280'+  
PROPERTY LINE: 301' W
- 2) SURFACE USE: AGRICULTURAL FIELD.
- 3) OPERATOR NAME: BRETT BIRCH.
- 4) THE NEAREST EXISTING WELL IS: RHOARDARMER 1-26B 338' SE.
- 5) Bearings shown are grid bearings of the Colorado State Plane Coordinate System, North Zone, North American Datum 1983/2007. The lineal dimensions as contained herein are based upon the "U.S. Survey Foot."
- 6) Ground elevations are based on an observed GPS elevation (NAVD 88 DATUM).
- 7) IMPROVEMENTS: See LOCATION DRAWING for all visible improvements within 500' of disturbed area.

N IN ACCORDANCE WITH A REQUEST FROM CRAIG RASMUSON - SYNERGY RESOURCES, BASELINE ENGINEERING CORP. HAS DETERMINED THE LOCATION OF THE EVANS 4N-14C-XR TO BE 2062' FNL AND 2998' FEL, AS MEASURED AT NINETY (90) DEGREES FROM THE SECTION LINE OF SECTION 26, TOWNSHIP 5 NORTH, RANGE 66 WEST AND THE BOTTOM HOLE LOCATION TO BE 460' FNL AND 754' FWL OF SECTION 14, TOWNSHIP 5 NORTH, RANGE 66 WEST, 6TH PRINCIPAL MERIDIAN, WELD COUNTY, COLORADO.

I HEREBY CERTIFY THAT THIS WELL LOCATION CERTIFICATE WAS PREPARED BY ME, OR UNDER MY DIRECT SUPERVISION, THAT THE FIELD WORK WAS COMPLETED ON 6/4/2014, THAT IT IS NOT A LAND SURVEY PLAT OR AN IMPROVEMENT SURVEY PLAT, AND THAT IT IS NOT TO BE RELIED UPON FOR ESTABLISHMENT OF FENCE, BUILDING, OR OTHER FUTURE IMPROVEMENT LINES.

SURFACE HOLE:  
LATITUDE: 40.372152° N  
LONGITUDE: 104.745634° W  
PDOP: 1.1  
1/4, 1/4: SW1/4NE1/4

BOTTOM HOLE:  
LATITUDE: 40.405557° N  
LONGITUDE: 104.753577° W

TARGET #1:  
LATITUDE: 40.370611° N  
LONGITUDE: 104.753492° W  
TARGET #2:  
LATITUDE: 40.371819° N  
LONGITUDE: 104.753497° W

**LEGEND**

- - FOUND/SET SURVEY MONUMENT PER MONUMENT RECORD EXCEPTIONS NOTED.
- - CALCULATED SURVEY MONUMENT POSITION
- (C) - CALCULATED DIMENSION

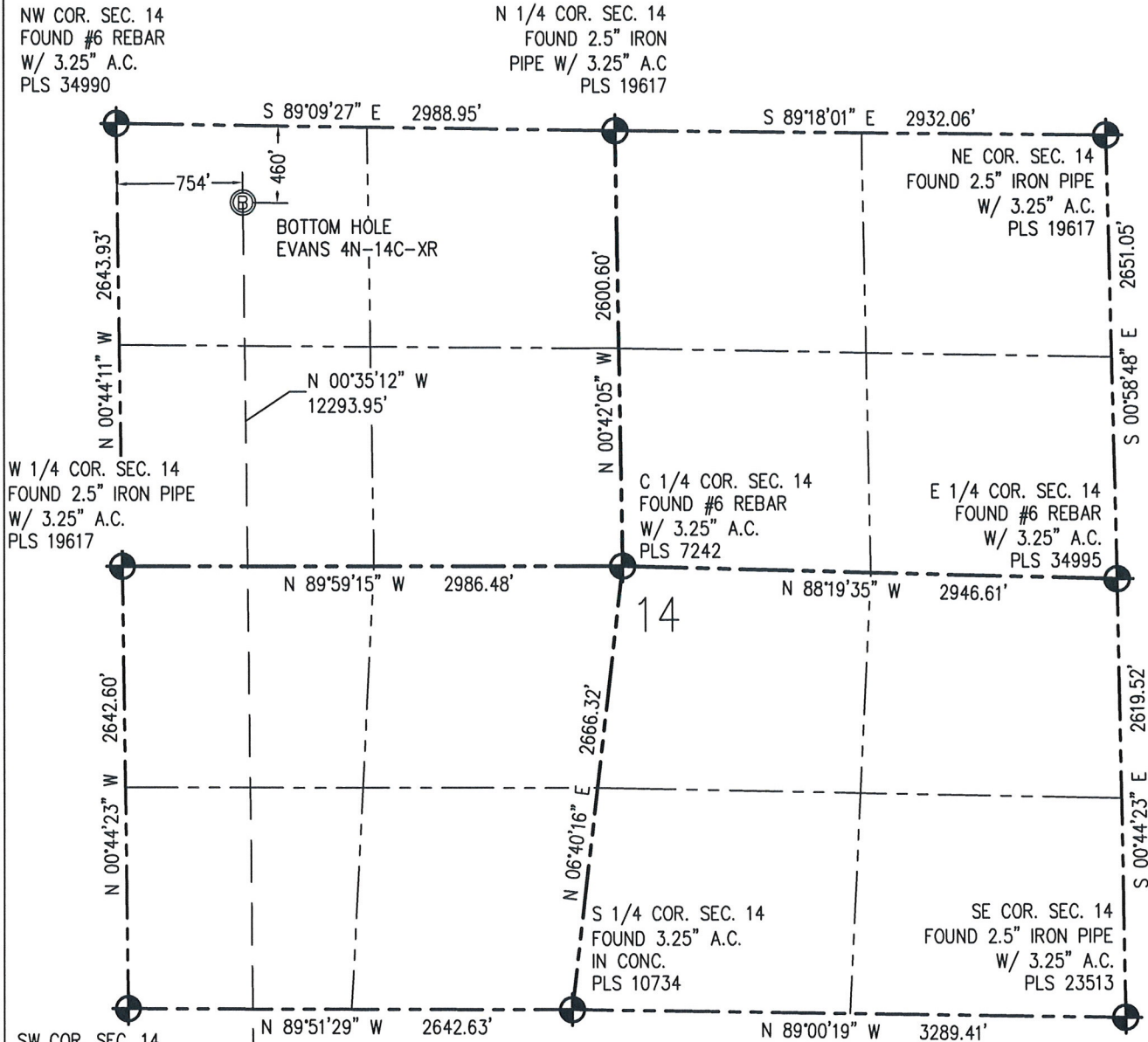


AARON A. DEMO  
Professional Land Surveyor Registration No. 38285  
State of Colorado  
FOR AND ON BEHALF OF BASELINE ENGINEERING CORP.

Completed  
4/6/2016

PROJECT #: Synergy.252



**WELL LOCATION CERTIFICATE**  
THIS MAP DOES NOT REPRESENT A BOUNDARY SURVEY

SW COR. SEC. 14  
FOUND 3.25" A.C.  
IN CONC.  
PLS 10734

0 1000  
Scale 1" = 1000 ft

## NOTES:

- 1) NEAREST CULTURAL ITEMS:  
BUILDING: 1245' SW  
BUILDING UNIT: 1237 SW  
HIGH OCCUPANCY BUILDING UNIT: 3437' NW  
DESIGNATED OUTSIDE ACTIVITY AREA: 5280'+  
PUBLIC ROAD: MESA VERDE DR. 1175' SW  
ABOVE GROUND UTILITY: 415' N  
RAILROAD: 5280'+  
PROPERTY LINE: 301' W
- 2) SURFACE USE: AGRICULTURAL FIELD.
- 3) OPERATOR NAME: BRETT BIRCH.
- 4) THE NEAREST EXISTING WELL IS: RHOADARMER 1-26B 338' SE.
- 5) Bearings shown are grid bearings of the Colorado State Plane Coordinate System, North Zone, North American Datum 1983/2007. The lineal dimensions as contained herein are based upon the "U.S. Survey Foot."
- 6) Ground elevations are based on an observed GPS elevation (NAVD 88 DATUM).
- 7) IMPROVEMENTS: See LOCATION DRAWING for all visible improvements within 500' of disturbed area.

IN ACCORDANCE WITH A REQUEST FROM CRAIG RASMUSON - SYNERGY RESOURCES, BASELINE ENGINEERING CORP. HAS DETERMINED THE LOCATION OF THE EVANS 4N-14C-XR TO BE 2062' FNL AND 2998' FEL, AS MEASURED AT NINETY (90) DEGREES FROM THE SECTION LINE OF SECTION 26, TOWNSHIP 5 NORTH, RANGE 66 WEST AND THE BOTTOM HOLE LOCATION TO BE 460' FNL AND 754' FWL OF SECTION 14, TOWNSHIP 5 NORTH, RANGE 66 WEST, 6TH PRINCIPAL MERIDIAN, WELD COUNTY, COLORADO.

I HEREBY CERTIFY THAT THIS WELL LOCATION CERTIFICATE WAS PREPARED BY ME, OR UNDER MY DIRECT SUPERVISION, THAT THE FIELD WORK WAS COMPLETED ON 6/4/2014, THAT IT IS NOT A LAND SURVEY PLAT OR AN IMPROVEMENT SURVEY PLAT, AND THAT IT IS NOT TO BE RELIED UPON FOR ESTABLISHMENT OF FENCE, BUILDING, OR OTHER FUTURE IMPROVEMENT LINES.

SURFACE HOLE:  
LATITUDE: 40.372152° N  
LONGITUDE: 104.745634° W  
PDOP: 1.1  
1/4, 1/4: SW1/4NE1/4

BOTTOM HOLE:  
LATITUDE: 40.405557° N  
LONGITUDE: 104.753577° W

TARGET #1:  
LATITUDE: 40.370611° N  
LONGITUDE: 104.753492° W  
TARGET #2:  
LATITUDE: 40.371819° N  
LONGITUDE: 104.753497° W

**LEGEND**

- - FOUND/SET SURVEY MONUMENT PER MONUMENT RECORD EXCEPTIONS NOTED.
- - CALCULATED SURVEY MONUMENT POSITION
- (-) - CALCULATED DIMENSION



AARON A. DEMO  
Professional Land Surveyor Registration No. 38285  
State of Colorado  
FOR AND ON BEHALF OF BASELINE ENGINEERING CORP.

Completed  
4/6/2016

PROJECT #: Synergy.252