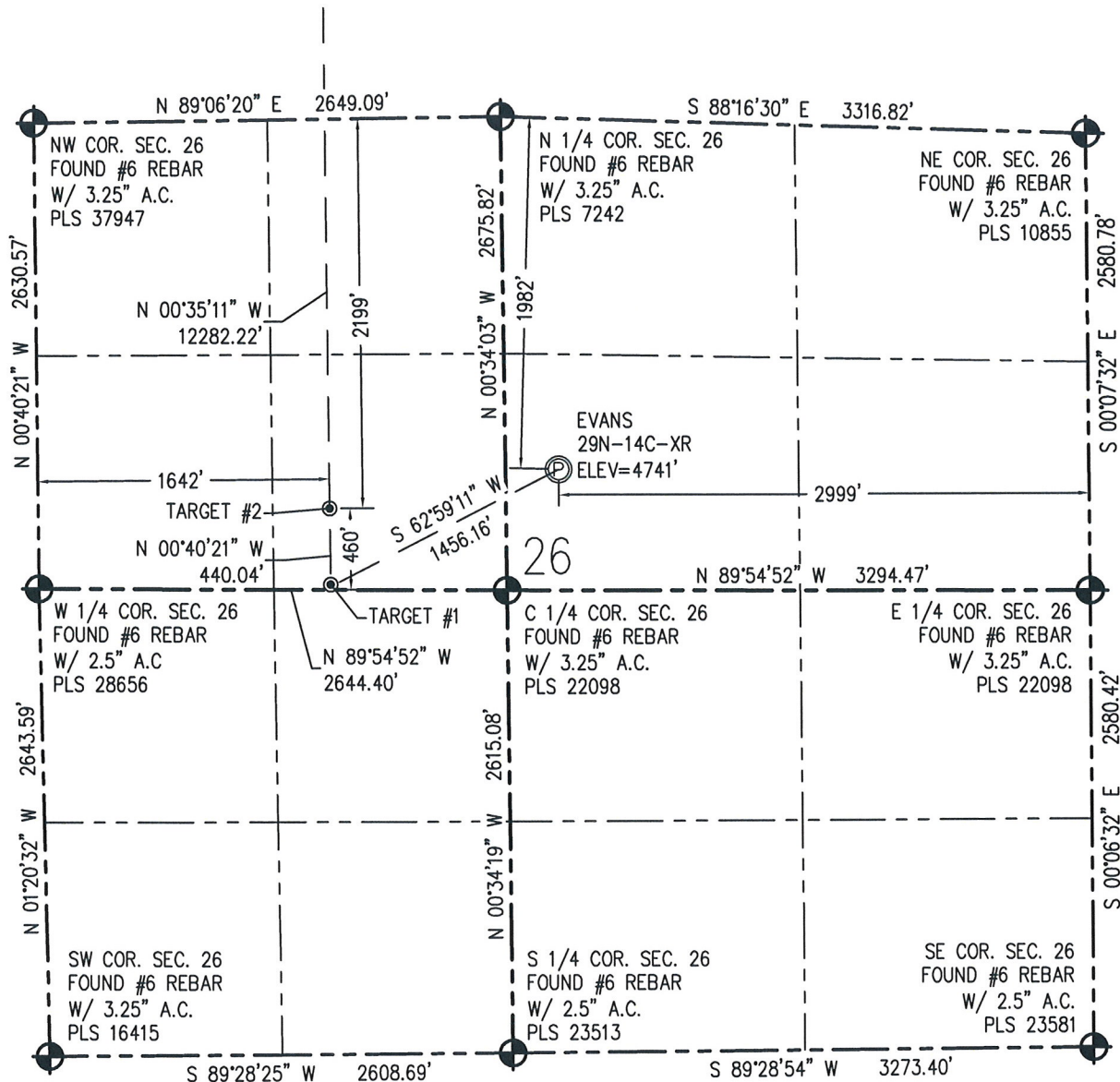


WELL LOCATION CERTIFICATE
THIS MAP DOES NOT REPRESENT A BOUNDARY SURVEY

0 1000
Scale 1" = 1000 ft



IN ACCORDANCE WITH A REQUEST FROM CRAIG RASMUSON - SYNERGY RESOURCES, BASELINE ENGINEERING CORP. HAS DETERMINED THE LOCATION OF THE EVANS 29N-14C-XR TO BE 1982' FNL AND 2999' FEL, AS MEASURED AT NINETY (90) DEGREES FROM THE SECTION LINE OF SECTION 26, TOWNSHIP 5 NORTH, RANGE 66 WEST AND THE BOTTOM HOLE LOCATION TO BE 460' FNL AND 1642' FWL OF SECTION 14, TOWNSHIP 5 NORTH, RANGE 66 WEST, 6TH PRINCIPAL MERIDIAN, WELD COUNTY, COLORADO.

I HEREBY CERTIFY THAT THIS WELL LOCATION CERTIFICATE WAS PREPARED BY ME, OR UNDER MY DIRECT SUPERVISION, THAT THE FIELD WORK WAS COMPLETED ON 6/4/2014, THAT IT IS NOT A LAND SURVEY PLAT OR AN IMPROVEMENT SURVEY PLAT, AND THAT IT IS NOT TO BE RELIED UPON FOR ESTABLISHMENT OF FENCE, BUILDING, OR OTHER FUTURE IMPROVEMENT LINES.

NOTES:

- 1) NEAREST CULTURAL ITEMS:
BUILDING: 1299' SW
BUILDING UNIT: 1292 SW
HIGH OCCUPANCY BUILDING UNIT: 3358' NW
DESIGNATED OUTSIDE ACTIVITY AREA: 5280'+
PUBLIC ROAD: MESA VERDE DR. 1231' SW
ABOVE GROUND UTILITY: 335' N
RAILROAD: 5280'+
PROPERTY LINE: 301' W
- 2) SURFACE USE: AGRICULTURAL FIELD.
- 3) OPERATOR NAME: BRETT BIRCH.
- 4) THE NEAREST EXISTING WELL IS: RHOARDARMER 1-26B 381' SE.
- 5) Bearings shown are grid bearings of the Colorado State Plane Coordinate System, North Zone, North American Datum 1983/2007. The lineal dimensions as contained herein are based upon the "U.S. Survey Foot."
- 6) Ground elevations are based on an observed GPS elevation (NAVD 88 DATUM).
- 7) IMPROVEMENTS: See LOCATION DRAWING for all visible improvements within 500' of disturbed area.

SURFACE HOLE:
LATITUDE: 40.372372° N
LONGITUDE: 104.745634° W
PDOP: 1.0
1/4, 1/4: SW1/4NE1/4

BOTTOM HOLE:
LATITUDE: 40.405500° N
LONGITUDE: 104.750392° W

TARGET #1:
LATITUDE: 40.370587° N
LONGITUDE: 104.750309° W
TARGET #2:
LATITUDE: 40.371794° N
LONGITUDE: 104.750314° W

LEGEND

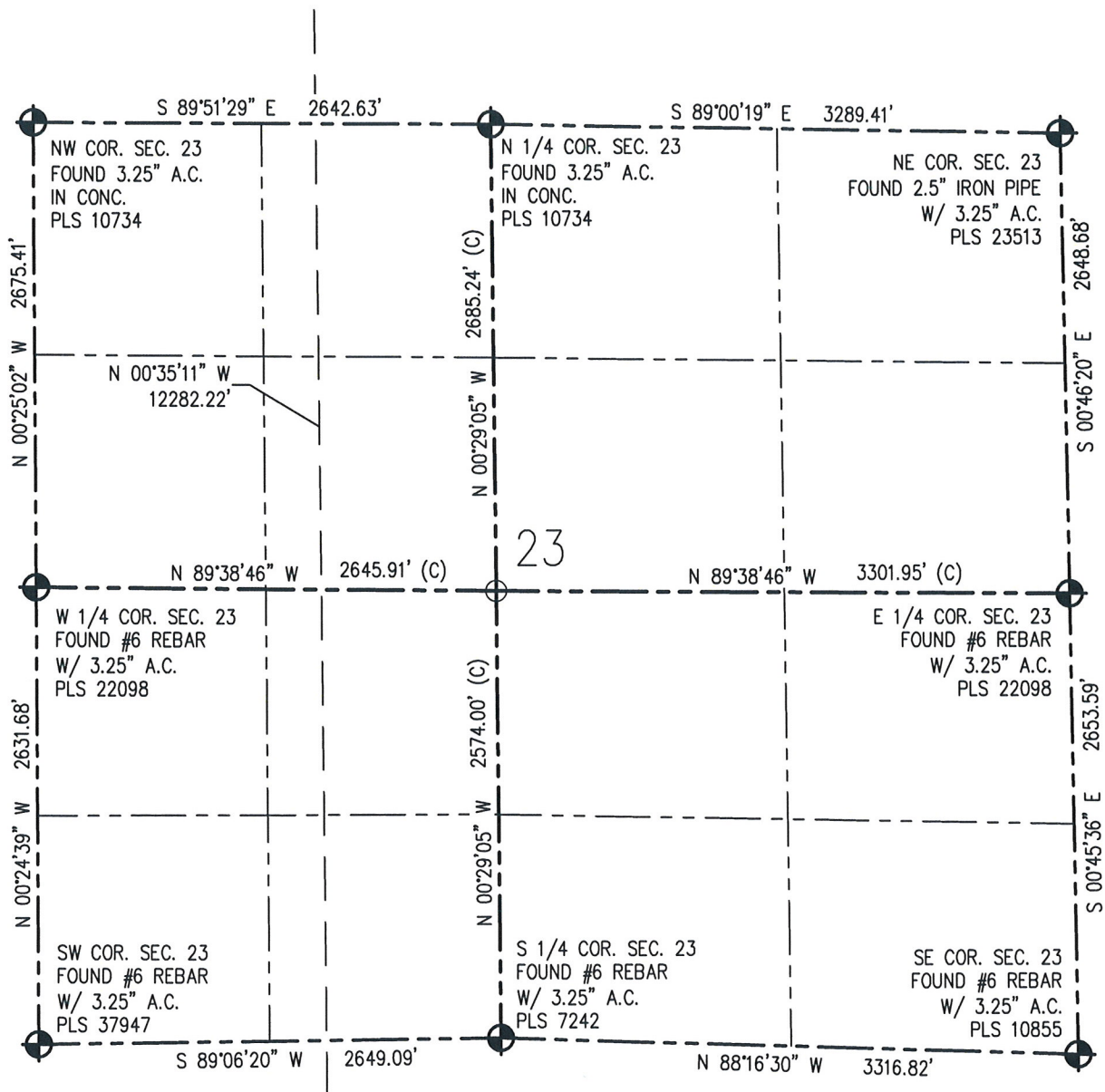
- - FOUND/SET SURVEY MONUMENT PER MONUMENT RECORD EXCEPTIONS NOTED.
- - CALCULATED SURVEY MONUMENT POSITION
- (C) - CALCULATED DIMENSION



AARON A. DEMO
Professional Land Surveyor Registration No. 38285
State of Colorado
FOR AND ON BEHALF OF BASELINE ENGINEERING CORP.

Completed
4/6/2016

PROJECT #: Synergy.252

WELL LOCATION CERTIFICATE
THIS MAP DOES NOT REPRESENT A BOUNDARY SURVEY

0 1000
Scale 1" = 1000 ft

N IN ACCORDANCE WITH A REQUEST FROM CRAIG RASMUSON - SYNERGY RESOURCES, BASELINE ENGINEERING CORP. HAS DETERMINED THE LOCATION OF THE EVANS 29N-14C-XR TO BE 1982' FNL AND 2999' FEL, AS MEASURED AT NINETY (90) DEGREES FROM THE SECTION LINE OF SECTION 26, TOWNSHIP 5 NORTH, RANGE 66 WEST AND THE BOTTOM HOLE LOCATION TO BE 460' FNL AND 1642' FWL OF SECTION 14, TOWNSHIP 5 NORTH, RANGE 66 WEST, 6TH PRINCIPAL MERIDIAN, WELD COUNTY, COLORADO.

I HEREBY CERTIFY THAT THIS WELL LOCATION CERTIFICATE WAS PREPARED BY ME, OR UNDER MY DIRECT SUPERVISION, THAT THE FIELD WORK WAS COMPLETED ON 6/4/2014, THAT IT IS NOT A LAND SURVEY PLAT OR AN IMPROVEMENT SURVEY PLAT, AND THAT IT IS NOT TO BE RELIED UPON FOR ESTABLISHMENT OF FENCE, BUILDING, OR OTHER FUTURE IMPROVEMENT LINES.

NOTES:

- 1) NEAREST CULTURAL ITEMS:
BUILDING: 1299' SW
BUILDING UNIT: 1292 SW
HIGH OCCUPANCY BUILDING UNIT: 3358' NW
DESIGNATED OUTSIDE ACTIVITY AREA: 5280'+
PUBLIC ROAD: MESA VERDE DR. 1231' SW
ABOVE GROUND UTILITY: 335' N
RAILROAD: 5280'+
PROPERTY LINE: 301' W
- 2) SURFACE USE: AGRICULTURAL FIELD.
- 3) OPERATOR NAME: BRETT BIRCH.
- 4) THE NEAREST EXISTING WELL IS: RHOADARMER 1-26B 381' SE.
- 5) Bearings shown are grid bearings of the Colorado State Plane Coordinate System, North Zone, North American Datum 1983/2007. The lineal dimensions as contained herein are based upon the "U.S. Survey Foot."
- 6) Ground elevations are based on an observed GPS elevation (NAVD 88 DATUM).
- 7) IMPROVEMENTS: See LOCATION DRAWING for all visible improvements within 500' of disturbed area.

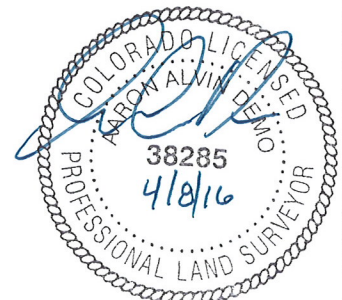
SURFACE HOLE:
LATITUDE: 40.372372° N
LONGITUDE: 104.745634° W
PDOP: 1.0
1/4, 1/4: SW1/4NE1/4

BOTTOM HOLE:
LATITUDE: 40.405500° N
LONGITUDE: 104.750392° W

TARGET #1:
LATITUDE: 40.370587° N
LONGITUDE: 104.750309° W
TARGET #2:
LATITUDE: 40.371794° N
LONGITUDE: 104.750314° W

LEGEND

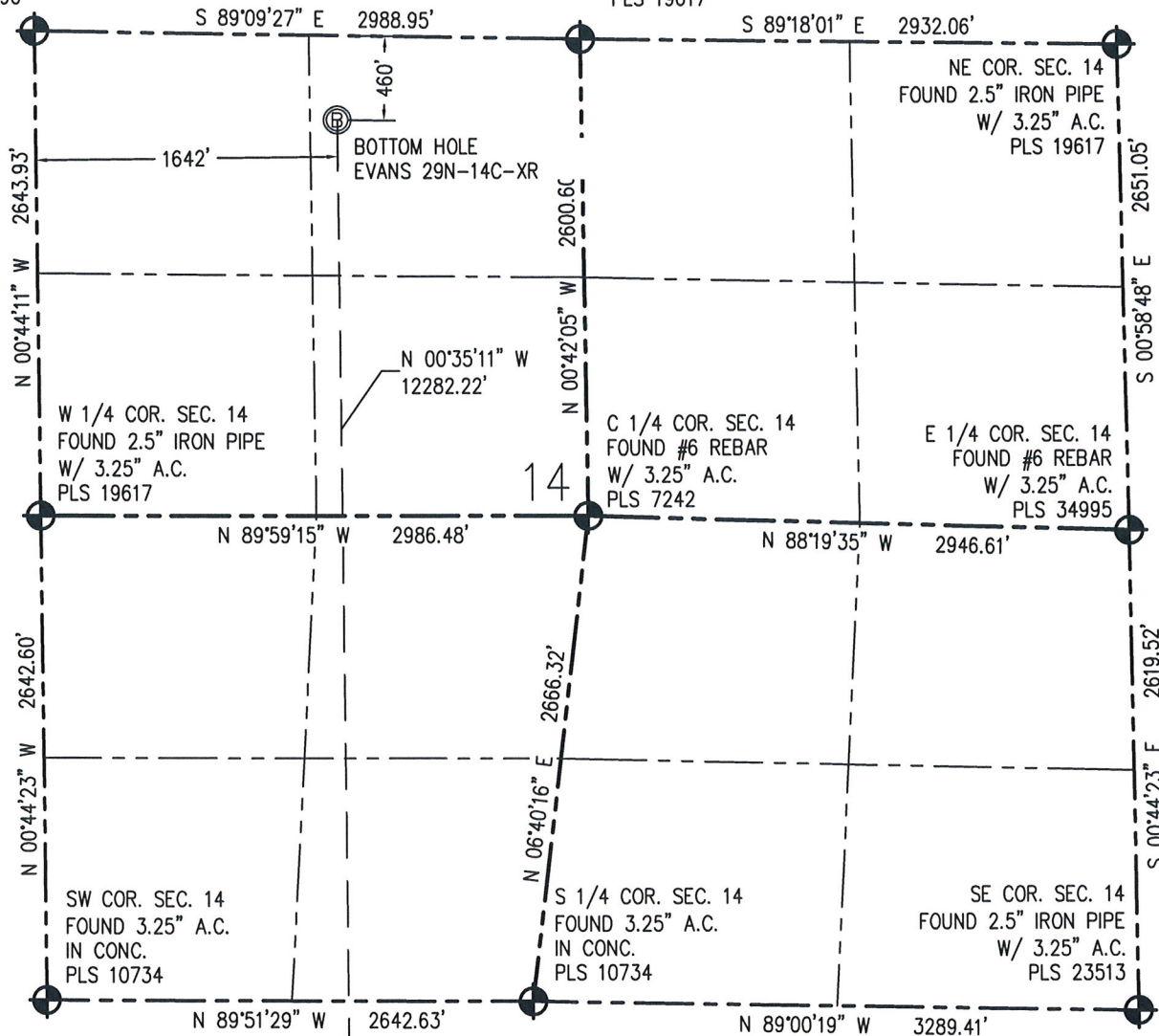
- - FOUND/SET SURVEY MONUMENT PER MONUMENT RECORD EXCEPTIONS NOTED.
- - CALCULATED SURVEY MONUMENT POSITION
- (C) - CALCULATED DIMENSION



AARON A. DEMO
Professional Land Surveyor Registration No. 38285
State of Colorado
FOR AND ON BEHALF OF BASELINE ENGINEERING CORP.

Completed
4/6/2016

PROJECT #: Synergy.252

WELL LOCATION CERTIFICATE
THIS MAP DOES NOT REPRESENT A BOUNDARY SURVEYNW COR. SEC. 14
FOUND #6 REBAR
W/ 3.25" A.C.
PLS 34990N 1/4 COR. SEC. 14
FOUND 2.5" IRON
PIPE W/ 3.25" A.C.
PLS 19617NE COR. SEC. 14
FOUND 2.5" IRON PIPE
W/ 3.25" A.C.
PLS 19617

0 1000
Scale 1" = 1000 ft

NOTES:

- 1) NEAREST CULTURAL ITEMS:
BUILDING: 1299' SW
BUILDING UNIT: 1292 SW
HIGH OCCUPANCY BUILDING UNIT: 3358' NW
DESIGNATED OUTSIDE ACTIVITY AREA: 5280'+
PUBLIC ROAD: MESA VERDE DR. 1231' SW
ABOVE GROUND UTILITY: 335' N
RAILROAD: 5280'+
PROPERTY LINE: 301' W
- 2) SURFACE USE: AGRICULTURAL FIELD.
- 3) OPERATOR NAME: BRETT BIRCH.
- 4) THE NEAREST EXISTING WELL IS: RHOADARMER 1-26B 381' SE.
- 5) Bearings shown are grid bearings of the Colorado State Plane Coordinate System, North Zone, North American Datum 1983/2007. The lineal dimensions as contained herein are based upon the "U.S. Survey Foot."
- 6) Ground elevations are based on an observed GPS elevation (NAVD 88 DATUM).
- 7) IMPROVEMENTS: See LOCATION DRAWING for all visible improvements within 500' of disturbed area.

IN ACCORDANCE WITH A REQUEST FROM CRAIG RASMUSON - SYNERGY RESOURCES, BASELINE ENGINEERING CORP. HAS DETERMINED THE LOCATION OF THE EVANS 29N-14C-XR TO BE 1982' FNL AND 2999' FEL, AS MEASURED AT NINETY (90) DEGREES FROM THE SECTION LINE OF SECTION 26, TOWNSHIP 5 NORTH, RANGE 66 WEST AND THE BOTTOM HOLE LOCATION TO BE 460' FNL AND 1642' FWL OF SECTION 14, TOWNSHIP 5 NORTH, RANGE 66 WEST, 6TH PRINCIPAL MERIDIAN, WELD COUNTY, COLORADO.

I HEREBY CERTIFY THAT THIS WELL LOCATION CERTIFICATE WAS PREPARED BY ME, OR UNDER MY DIRECT SUPERVISION, THAT THE FIELD WORK WAS COMPLETED ON 6/4/2014, THAT IT IS NOT A LAND SURVEY PLAT OR AN IMPROVEMENT SURVEY PLAT, AND THAT IT IS NOT TO BE RELIED UPON FOR ESTABLISHMENT OF FENCE, BUILDING, OR OTHER FUTURE IMPROVEMENT LINES.

SURFACE HOLE:
LATITUDE: 40.372372° N
LONGITUDE: 104.745634° W
PDOP: 1.0
1/4, 1/4: SW1/4NE1/4

BOTTOM HOLE:
LATITUDE: 40.405500° N
LONGITUDE: 104.750392° W

TARGET #1:
LATITUDE: 40.370587° N
LONGITUDE: 104.750309° W
TARGET #2:
LATITUDE: 40.371794° N
LONGITUDE: 104.750314° W

LEGEND

- - FOUND/SET SURVEY MONUMENT PER MONUMENT RECORD EXCEPTIONS NOTED.
- - CALCULATED SURVEY MONUMENT POSITION
- (-) - CALCULATED DIMENSION



AARON A. DEMO
Professional Land Surveyor Registration No. 38285
State of Colorado
FOR AND ON BEHALF OF BASELINE ENGINEERING CORP.

Completed
4/6/2016

PROJECT #: Synergy.252