

Click here to reset the form

FORM
21
Rev 9/14

State of Colorado
Oil and Gas Conservation Commission

1120 Lincoln Street, Suite 801, Denver, Colorado 80203 (303)-894-2100 Fax: (303)-894-2109



FOR OGCC USE ONLY

Document Number:

Date Received:

MECHANICAL INTEGRITY TEST

1. Duration of the pressure test must be a minimum of 15 minutes.
2. An original pressure chart must accompany this report if this test was not witnessed by a OGCC representative. Injection wells tests must be witnessed by an OGCC representative.
3. For production wells, test pressures must be at a minimum of 300 psig.
4. New injection wells must be tested to maximum requested injection pressure.
5. For injection wells, test pressures must be at least 300 psig or average injection pressure, whichever is greater.
6. A minimum 300 psi differential pressure must be maintained between the tubing and tubing/casing annulus pressure.
7. Do not use this form if submitting under provisions of Rule 326.a.(1) B. or C.
8. OGCC notification must be provided 10 days prior to the test via Form 42.
9. Packers or bridge plugs, etc., must be set within 100 feet of the perforated interval to be considered a valid test.

OGCC Operator Number: 16700

Name of Operator: Chevron U.S.A. Inc

Address: 100 Chevron Road

City: Rangely

State: CO

Zip: 81648

Contact Name and Telephone

Diane L Peterson

No: (970) 675-3842

Email: dlpe@chevron.com

API Number: 05-103-05780

OGCC Facility ID Number: 47443 / Rangely Field 72370

Well/Facility Name: A.C. McLAUGHLIN

Well/Facility Number: 10

Location QtrQtr: SWSW

Section: 13

Township: 2N

Range: 103W

Meridian: 6th

Complete the
Attachment Checklist

Oper OGCC

Pressure Chart	✓	
Cement Bond Log		
Tracer Survey		
Temperature Survey		
Inspection Number	✓	

☒ **SHUT-IN PRODUCTION WELL**

☐ **INJECTION WELL**

Last MIT Date:

Test Type:

☒ Test to Maintain SI/TA status

☐ 5- year UIC

☐ Reset Packer

☐ Verification of Repairs

☐ Annual UIC Test

Describe Repairs or Other Well Activities: Pull ESP, RIH with 7" packer

Wellbore Data at Time of Test

Injection/Producing Zone(s)

Perforated Interval:

Open Hole Interval:

Weber

6177-6506

Casing Test

Use when perforations or open hole is isolated by bridge plug or cement plug; use if cased-hole only with plug back total depth.

Bridge Plug or Cement Plug Depth

Tubing Casing/Annulus Test

Tubing Size:

2 7/8'

Tubing Depth:

5921'

Top Packer Depth:

5886

Multiple Packers?

☐ Yes ☒ No

Test Data

Test Date

4/8/16

Well Status During Test

SHUT IN

Casing Pressure Before Test

0

Initial Tubing Pressure

0

Final Tubing Pressure

0

Casing Pressure Start Test

350

Casing Pressure - 5 Min.

350

Casing Pressure - 10 Min.

350

Casing Pressure Final Test

350

Pressure Loss or Gain During Test

0

Test Witnessed by State Representative?

☒ Yes

☐ No

OGCC Field Representative (Print Name):

Kyle Granahan

I hereby certify that the statements made in this form are, to the best of my knowledge, true, correct, and complete.

Print Name: Diane L Peterson

Form 42# 401017586

Field Inspection # 475102383

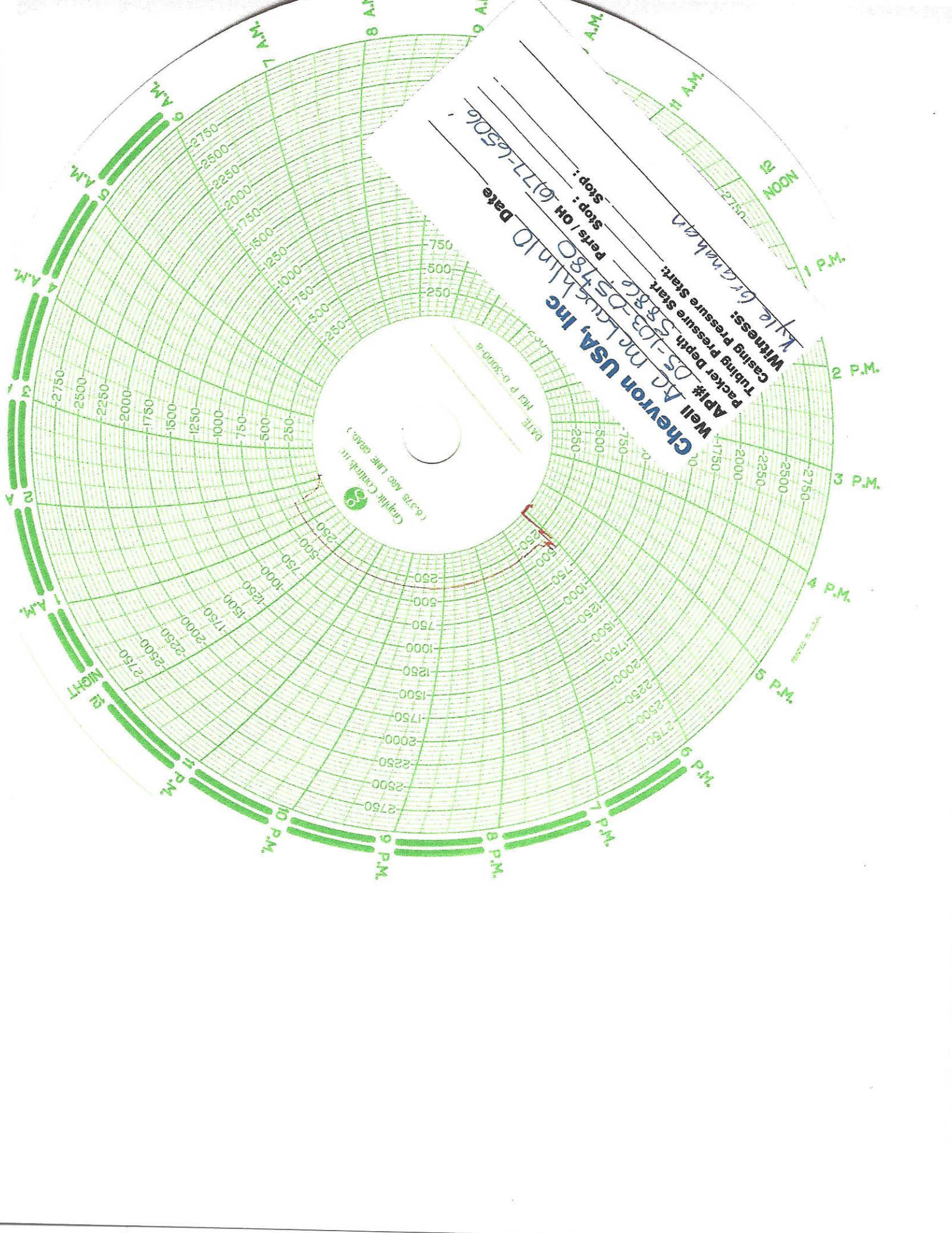
Signed: Diane L Peterson Title: Permitting Specialist

Date: 4/8/16

OGCC Approval: [Signature] Title: COGCC NWFI

Date: 4/8/16

Conditions of Approval, if any: Kyle Granahan



Chevron USA, Inc.
Well A2 M.L.A., Inc.
API# DS-103-05480
Packer Depth 5882
Tubing Pressure Start: _____
Casing Pressure Start: _____
Witness: _____
Stop / OH 6:17-6:50
Date 10-10-67