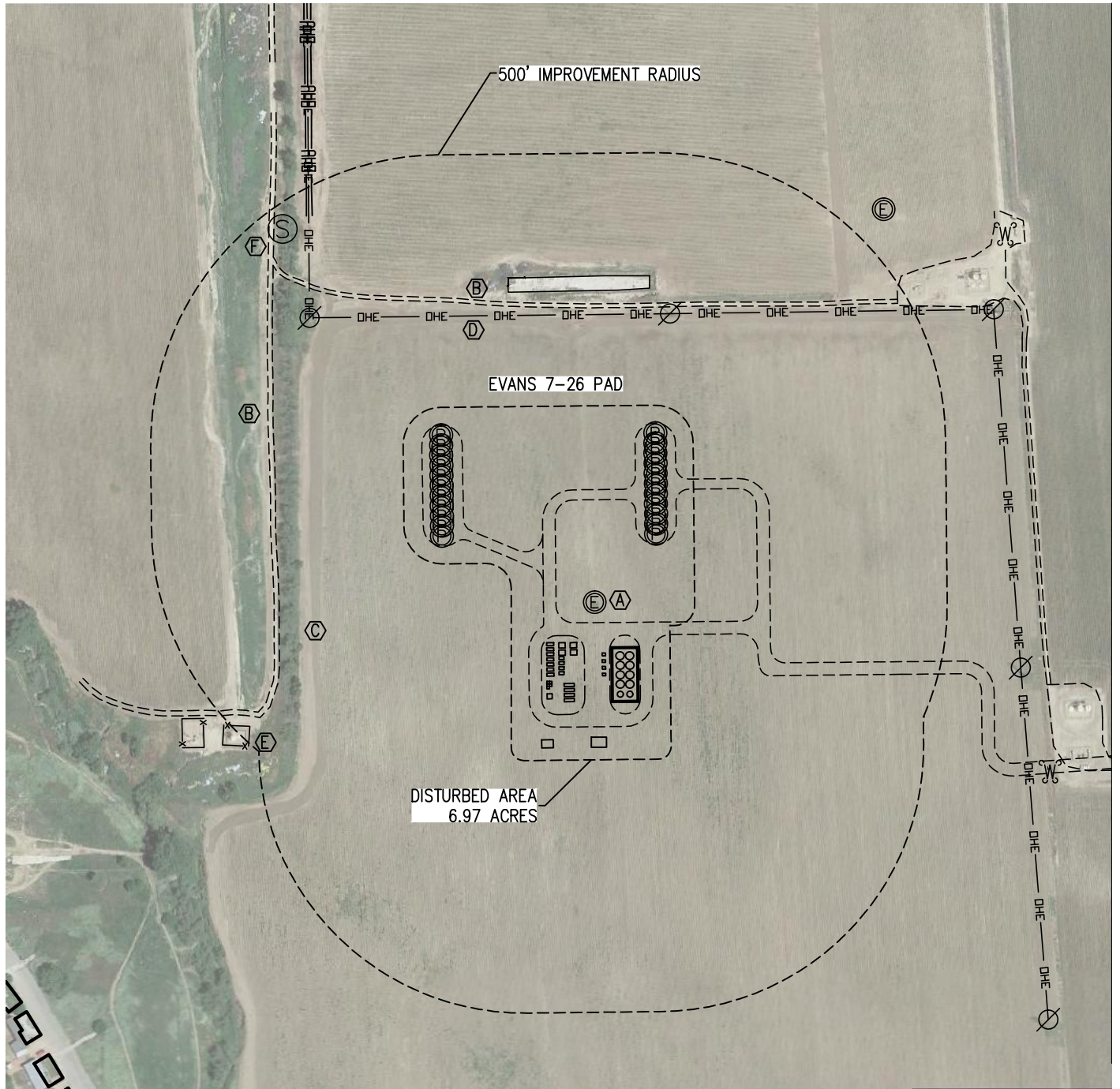


# PRODUCTION FACILITY LOCATION DRAWING

EVANS 7-26 PAD

SECTION 26  
TOWNSHIP 5 NORTH  
RANGE 66 WEST



NEAREST: BUILDING 1,146' SW, BUILDING UNIT 1,146' SW, HIGH OCCUPANCY BUILDING UNIT 3,697' NW, DESIGNATED OUTSIDE ACTIVITY AREA 5,280'+  
PUBLIC ROAD 1,105' SW, ABOVE GROUND UTILITY 649' N, RAILROAD 5,280'+, PROPERTY LINE 494' W

**IMPROVEMENTS:**

- (A) EXISTING WELL: 87' NE
- (B) DIRT ROAD: 530' W, 664' N
- (C) DITCH: 481' W
- (D) OVERHEAD ELECTRIC: 649' N
- (E) PRODUCTION FACILITY: 578' W
- (F) SAN. SEWER MANHOLE: 972' NW

NOTE: ALL MEASUREMENTS ARE FROM EDGE OF FACILITY EQUIPMENT.

**NOTE**

The size, type and location of underground utilities shown hereon are approximate, and are based on markings made by utility locate companies. It is not guaranteed that all utilities have been located. It shall be the responsibility of the contractor to verify the existence of all underground utilities in the area of the work before commencing new construction.

