

# NOBLE ENERGY INC.

Backus #04-16

SESE 4-4N-65W

647 FSL & 661 FEL

WELD COUNTY, CO

Wattenberg

CURRENT WELLBORE SCHEMATIC W/ PROPOSED P&A

4/7/2016

API: 05-123-17625

COGCC #

Spud Date: 12/8/1993

GL Elev: 4671

KB Elev: 4682

## Surface Casing :

8.625" 23# M-50 SET AT 518'

Cement: 500 sx

TOC: Surface

Surface Casing = 518' + 100' = 618'

Deepest water well = 220' + 150' = 370'

Fox Hills = 240' + 150' = 390'

TOC @ 6356, 4072, 3860, & 2000'

Sussex Top @ 4078'

NIO Top @ 6769'

Codell Top @ 7102'

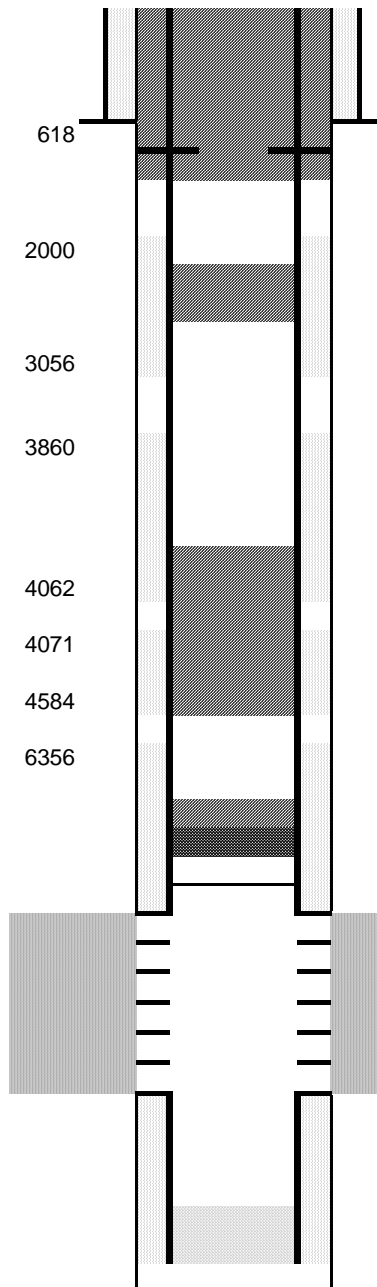
SUSSEX Production within a mile

## Production Casing :

3.5" 7.7# N-80 & B-70 SET AT 7335'

Cement: 561 sx

TD: 12/13/1993



Cut surface casing off 6'-8' below surface.

Pump approx 235 sx shoe plug at 618'

205 sx outside and 30 sx inside

Will bring cement to surface.

Perforate at 618'

Set courtesy plug at 2500' with:

10 sx

Pump balance plug at 4500' with 25 sx

Set CIBP @ 6552 w/ 2 sx cement  
Top of fish AT 6557' (3 JTS TBG IN HOLE)

NIOBRARA Perforations 6786' - 6918'

CODELL Perforations 7104' - 7118'

TD:

7382