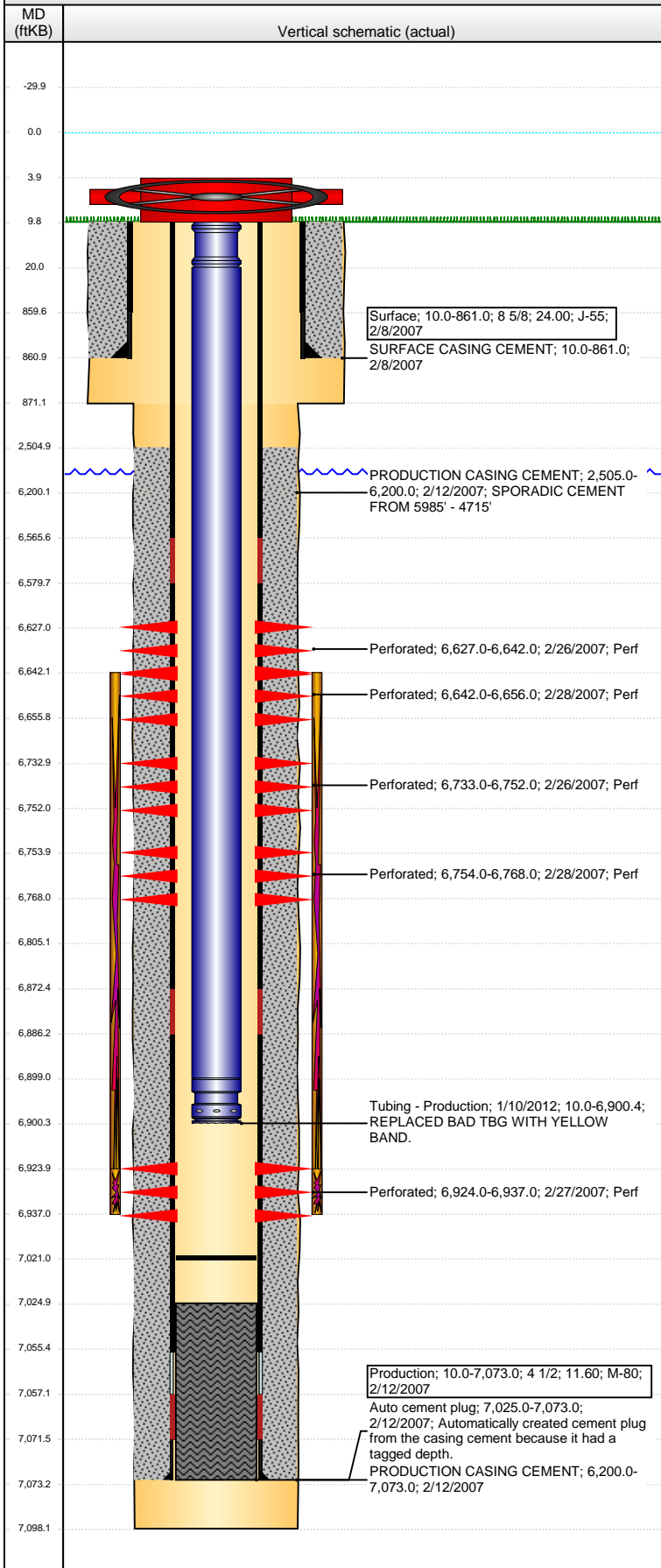


Well Name: COCKROFT USX A11-02

VERTICAL - ORIGINAL HOLE, 3/9/2016 1:49:32 PM



Well Header

API	Business Unit	District	Well Config
05-123-24709	DJ BASIN	15	VERTICAL
Original KB Elevation (ft)	KB - GL / MSL (ftKB)	Spud Date	P & A Date
4,749	10.00	2/8/2007	

Comment

THE CBL USED TO PERF NIO WAS INCORRECT - DISCREPANCY IN FILE ON WHICH ARE CORRECT. FIRST PRODUCTION PER DRL RPT 04/25/07.

Directions To Well

CR 57 & CR 72, EAST 6/10 THS MILE, SOUTH 1/10 THS INTO LOC.

Congressional Location

Quarter 1	Quarter 2	Quarter 3	Quarter 4	Section	Township	Twnshp N...	Range	Rng E/W Dir
		NW	NE	11	6	N	64	W

Bottom Hole Location

North-South Distance (ft)	From N or S Line	East-West Distance (ft)	From E or W Line
---------------------------	------------------	-------------------------	------------------

Plug Back Total Depths

Date	Depth (ftKB)	Method	Com
2/11/2007	7,056.0	CASING TALLY	FLOAT COLLAR
2/27/2007	7,025.0	CASED HOLE LOG	DEPTH LOGGER ON CBL
12/2/2011	7,024.5	TUBING TALLY	
1/9/2012	7,021.0	TAG	SLICK LINE.

Wellbore Sections

Section Des	Size (in)	Act Top, MD (ftKB)	Act Btm, MD (ftKB)
SURFACE	12 1/4	10.0	871.0
PRODUCTION	7 7/8	871.0	7,098.0

Zone Statuses

Zone Name	Status Date	Status	Fluid Type	Job	Prod Method
NIOBRARA	3/7/2007	PR		DRILLING/CO...	
CODELL	3/7/2007	PR		DRILLING/CO...	
CODELL	1/17/2012	PR		RE-FRAC, 12/1...	

Casing Strings

Surface, 861.0ftKB

Casing Description	Run Date	OD (in)	Wt/Len (l...)	Grade	Top, MD (ft...)	MD (ftKB)
Surface	2/8/2007	8 5/8	24.00	J-55	10.0	861.0

Production, 7,073.0ftKB

Casing Description	Run Date	OD (in)	Wt/Len (l...)	Grade	Top, MD (ft...)	MD (ftKB)
Production	2/12/2007	4 1/2	11.60	M-80	10.0	7,073.0

Cement

Description	Top Depth (ftKB)	Bottom Depth (ftKB)
SURFACE CASING CEMENT	10.0	861.0
PRODUCTION CASING CEMENT	2,505.0	6,200.0
PRODUCTION CASING CEMENT	6,200.0	7,073.0

Tubing Strings

Tubing Description	Run Date	String...	ID (in)	Wt (lb/ft)	Grade	Len (ft)	Set De...
Tubing	2/28/2007	2 3/8	1.995	4.70	J-55	6,900.00	
Tubing Description	Run Date	String...	ID (in)	Wt (lb/ft)	Grade	Len (ft)	Set De...
Tubing - Frac string	12/3/2011	2 7/8	2.441	6.50	N-80	6,836.94	
Tubing Description	Run Date	String...	ID (in)	Wt (lb/ft)	Grade	Len (ft)	Set De...
Tubing - Production	1/10/2012	2 3/8	1.995	4.70	J-55	6,890.42	

Tubing Components

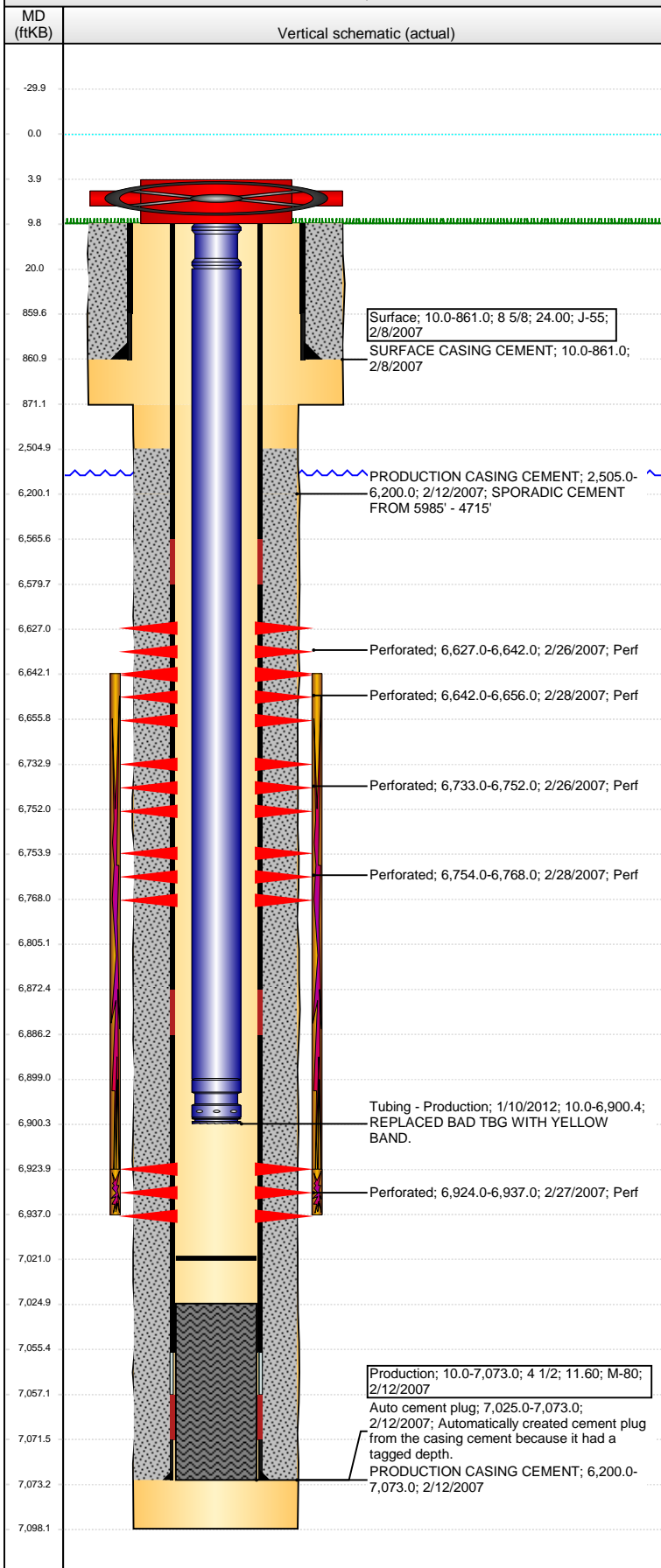
Item Des	OD (in)	Wt (lb/ft)	Grade	Jts	Len (ft)	Btm (ftKB)	Btm (TVD) (ftKB)
Pup Joint	2 3/8	4.70	J-55	1	10.00	20.0	
Tubing	2 3/8	4.70	J-55	212	6,878.92	6,898.9	
Seal Nipple	2 3/8	4.70	N-80	1	1.20	6,900.1	
Notched collar	2 3/8	4.70	J-55	1	0.30	6,900.4	

Perforation Data

Zone	Bnch/St g	Entered Shot Total	Top (ftKB)	Btm (ftKB)	Date
NIOBRARA, ORIGINAL HOLE		56	6,627.00	6,642.00	2/26/2007
NIOBRARA, ORIGINAL HOLE		48	6,642.00	6,656.00	2/28/2007
NIOBRARA, ORIGINAL HOLE		72	6,733.00	6,752.00	2/26/2007
NIOBRARA, ORIGINAL HOLE		56	6,754.00	6,768.00	2/28/2007

Well Name: COCKROFT USX A11-02

VERTICAL - ORIGINAL HOLE, 3/9/2016 1:49:34 PM



Perforation Data					
Zone	Brnch/St g	Entered Shot Total	Top (ftKB)	Btm (ftKB)	Date
CODELL, ORIGINAL HOLE		52	6,924.00	6,937.00	2/27/2007

Stimulations & Treatments

Date	Zone	Primary Job Type
3/7/2007	NIORARA-CODELL, ORIGINAL HOLE	DRILLING/COMPLETION - ORIGINAL
Technical Result		Tech Result Note

Comment
TRIPLE ENTRY FRAC (ONLY FRAC'D FROM 6642' - 6937' SIMULTANEOUSLY).

Date	Zone	Primary Job Type
12/14/2011	CODELL, ORIGINAL HOLE	RE-FRAC
Technical Result		Tech Result Note
Success		According to Plan

Comment
(CODELL)
OPEN WELL WITH 58 PSI, BACKSIDE WITH 17 PSI, FORMATION BREAK 2912 PSI.
PRE-TREATMENT ISIP= 2679 PSI, 5 MIN= 1840 PSI, FRAC GRAD= .82 PSI/FT.
POST-TREATMENT ISIP= 3543 PSI, 5 MIN= 3456 PSI, AVGS: VISC= 24.3 CP, PH= 10.23, TEMP= 69.3 F, PRESS= 4657 PSI, RATE= 15.1 BPM, MAXIMUM: PRESS= 5180 PSI, RATE= 15.4 BPM. JOB WENT WELL.

Other In Hole

Run Date	Des	OD (in)	Top (ftKB)	Btm (ftKB)

Logs

Date	Type	Top, MD (ftKB)	Btm, MD (ftKB)
2/12/2007	COMPENSATED DENSITY	2,640.0	7,078.0
2/12/2007	INDUCTION	861.0	7,098.0
2/27/2007	CEMENT BOND	2,369.0	7,023.0
2/19/2015	GYRO	10.0	6,800.0