

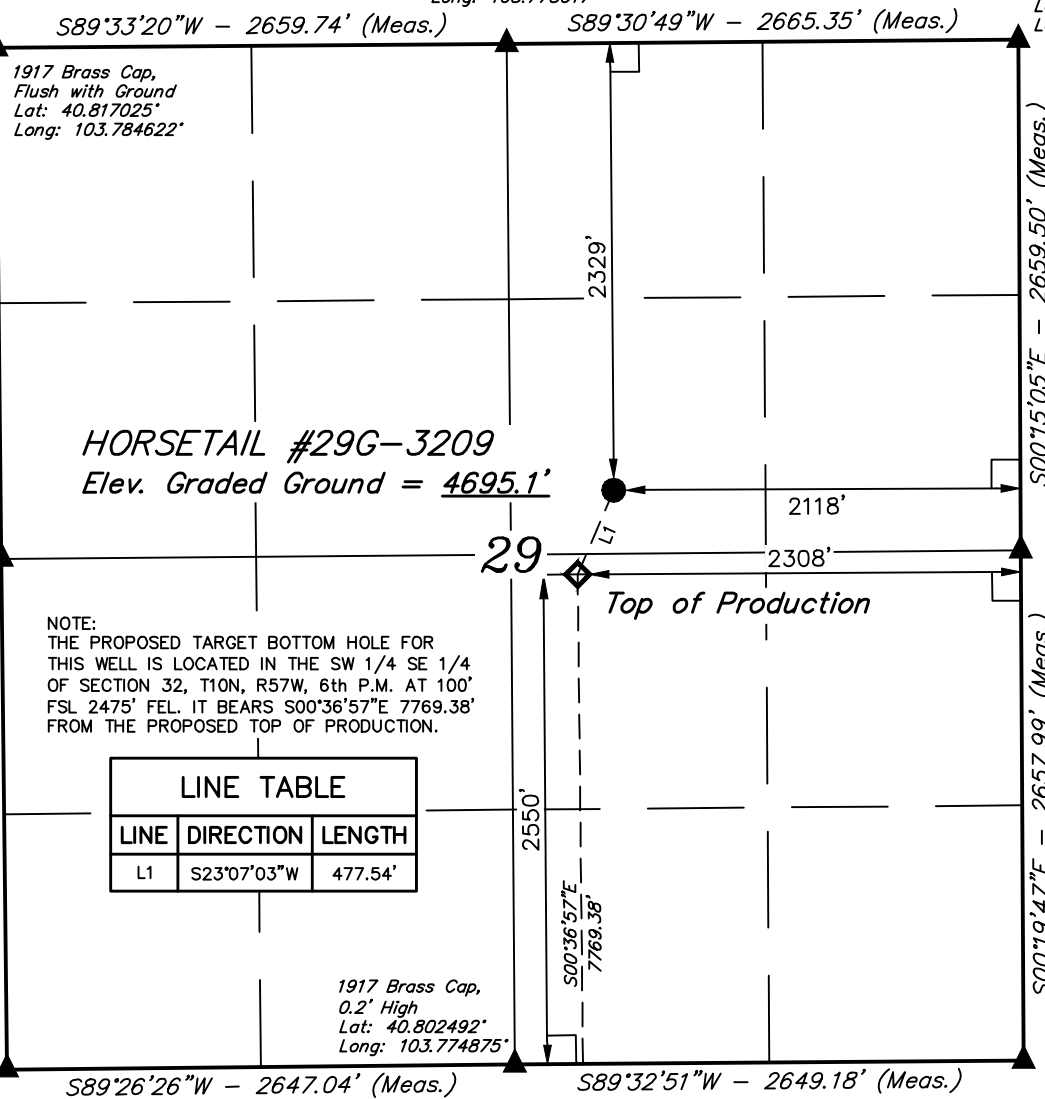
# T10N, R57W, 6th P.M.

## LEGEND:

- └─┘ = 90° SYMBOL
- = PROPOSED WELLHEAD.
- ◆ = TOP OF PRODUCTION.
- = TARGET BOTTOM HOLE.
- ▲ = SECTION CORNERS LOCATED. (NAD 83)

1917 Brass Cap,  
1.6' High  
Lat: 40.817078°  
Long: 103.775017°

1917 Brass Cap,  
0.2' High  
Lat: 40.817133°  
Long: 103.765389°



1917 Brass Cap,  
0.8' High  
Lat: 40.809725°  
Long: 103.784528°

2012 Alum Cap,  
Flush with Ground  
Lat: 40.809836°  
Long: 103.765356°

1917 Brass Cap,  
0.4' High  
Lat: 40.802425°  
Long: 103.784433°

1917 Brass Cap,  
0.2' High  
Lat: 40.802492°  
Long: 103.774875°

1917 Brass Cap,  
0.9' High  
Lat: 40.802542°  
Long: 103.765308°

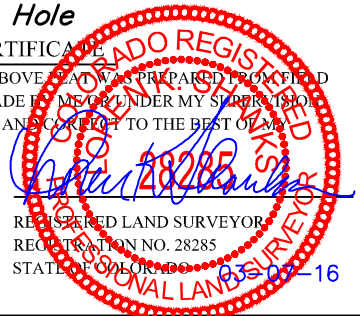
○ Target Bottom Hole

PDOP = 1.3



| NAD 83 (TOP OF PRODUCTION)             | NAD 83 (SURFACE LOCATION)              |
|--|--|
| LATITUDE = 40°48'34.18" (40.809494)    | LATITUDE = 40°48'38.52" (40.810700)    |
| LONGITUDE = 103°46'25.28" (103.773689) | LONGITUDE = 103°46'22.84" (103.773011) |
| NAD 27 (TOP OF PRODUCTION)             | NAD 27 (SURFACE LOCATION)              |
| LATITUDE = 40°48'34.23" (40.809508)    | LATITUDE = 40°48'38.57" (40.810714)    |
| LONGITUDE = 103°46'23.47" (103.773186) | LONGITUDE = 103°46'21.03" (103.772508) |

CERTIFICATE  
THIS IS TO CERTIFY THAT THE ABOVE PLAT WAS PREPARED FROM FIELD NOTES OF ACTUAL SURVEYS MADE BY ME OR UNDER MY SUPERVISION AND THAT THE SAME ARE TRUE AND CORRECT TO THE BEST OF MY KNOWLEDGE AND BELIEF.



**BASIS OF BEARINGS**  
BASIS OF BEARINGS IS A G.P.S. OBSERVATION

**BASIS OF ELEVATION**

SPOT ELEVATION LOCATED AT THE NORTHEAST CORNER OF SECTION 15, T9N, R58W, 6th P.M. TAKEN FROM THE GATEHOOK SPRING, QUADRANGLE, COLORADO, WELD COUNTY, 7.5 MINUTE QUAD (TOPOGRAPHIC MAP) PUBLISHED BY THE UNITED STATES DEPARTMENT OF THE INTERIOR, GEOLOGICAL SURVEY. SAID ELEVATION IS MARKED AS BEING 4679 FEET.

**WHITING OIL & GAS CORP.**

**HORSETAIL #29G-3209 (SURFACE LOCATION)**  
SW 1/4 NE 1/4, SECTION 29, T10N, R57W, 6th P.M.  
WELD COUNTY, COLORADO

|                                   |                        |
|-----------------------------------|------------------------|
| SURVEYED BY: DALLAS NIELSEN, G.W. | DATE: 12-10-15         |
| DRAWN BY: J.M.C.                  | DATE DRAWN: 12-14-15   |
| SCALE: 1" = 1000'                 | REVISED: 03-02-16 M.D. |

**WELL LOCATION PLAT**



**UELS, LLC**  
Corporate Office \* 85 South 200 East  
Vernal, UT 84078 \* (435) 789-1017



# T10N, R57W, 6th P.M.

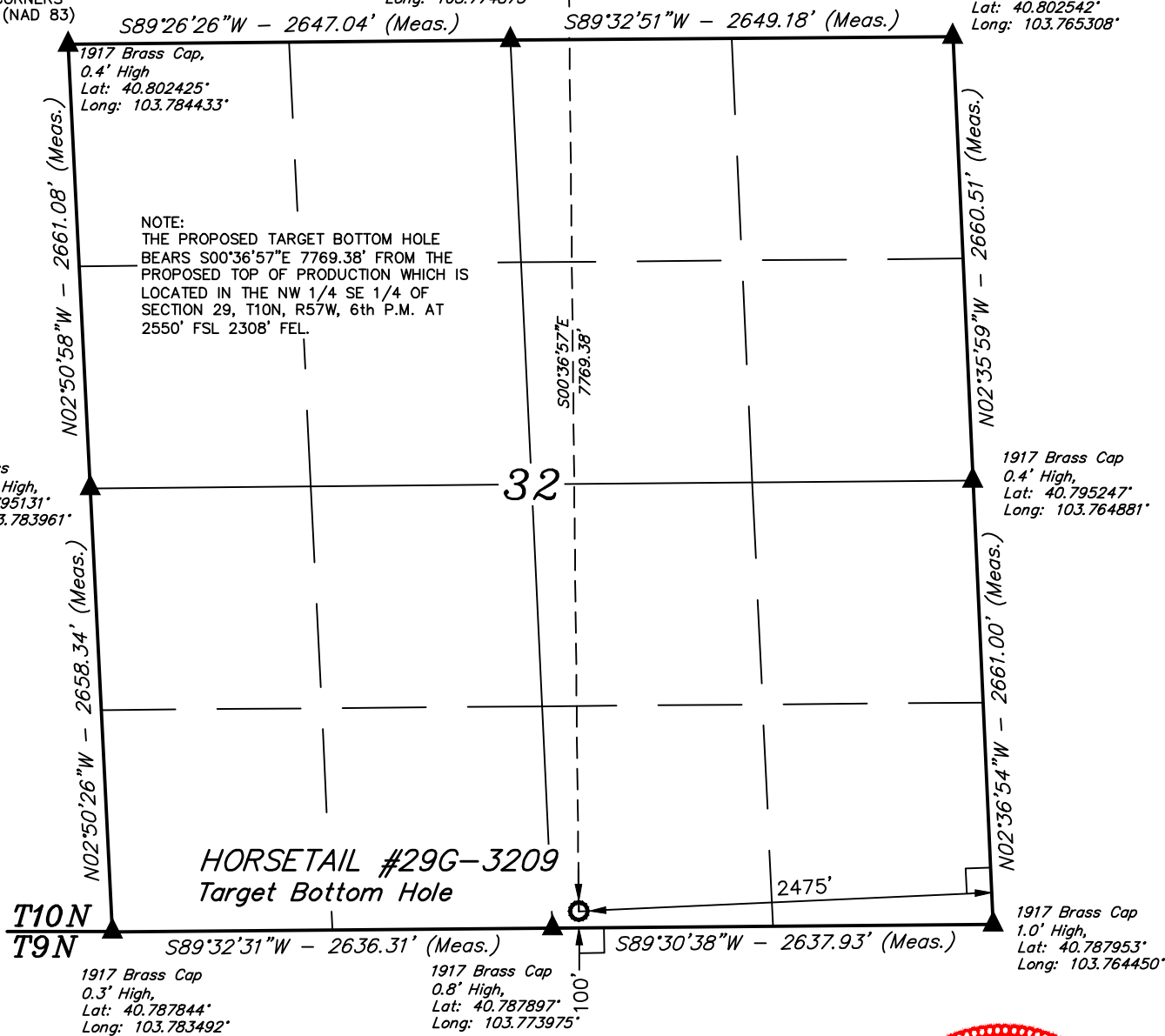
## LEGEND:

- └─┘ = 90° SYMBOL
- ◆ = TOP OF PRODUCTION.
- = TARGET BOTTOM HOLE.
- ▲ = SECTION CORNERS LOCATED. (NAD 83)

1917 Brass Cap,  
0.2' High  
Lat: 40.802492°  
Long: 103.774875°

◆ Top of Production

1917 Brass Cap,  
0.9' High  
Lat: 40.802542°  
Long: 103.765308°



|  |
|--|
| <b>NAD 83 (TARGET BOTTOM HOLE)</b>     |
| LATITUDE = 40°47'17.43" (40.788175)    |
| LONGITUDE = 103°46'24.27" (103.773408) |
| <b>NAD 27 (TARGET BOTTOM HOLE)</b>     |
| LATITUDE = 40°47'17.48" (40.788189)    |
| LONGITUDE = 103°46'22.46" (103.772906) |



**CERTIFICATE**  
 THIS IS TO CERTIFY THAT THE ABOVE PLAT WAS PREPARED FROM FIELD NOTES OF ACTUAL SURVEYS MADE BY ME OR UNDER MY SUPERVISION AND THAT THE SAME ARE TRUE AND CORRECT TO THE BEST OF MY KNOWLEDGE AND BELIEF.



**BASIS OF BEARINGS**  
 BASIS OF BEARINGS IS A G.P.S. OBSERVATION

**BASIS OF ELEVATION**

SPOT ELEVATION LOCATED AT THE NORTHEAST CORNER OF SECTION 15, T9N, R58W, 6th P.M. TAKEN FROM THE GATEHOOK SPRING, QUADRANGLE, COLORADO, WELD COUNTY, 7.5 MINUTE QUAD (TOPOGRAPHIC MAP) PUBLISHED BY THE UNITED STATES DEPARTMENT OF THE INTERIOR, GEOLOGICAL SURVEY. SAID ELEVATION IS MARKED AS BEING 4679 FEET.



**WHITING OIL & GAS CORP.**

**HORSETAIL #29G-3209 (TARGET BOTTOM HOLE)**  
 SW 1/4 SE 1/4, SECTION 32, T10N, R57W, 6th P.M.  
 WELD COUNTY, COLORADO

|                                   |                        |
|-----------------------------------|------------------------|
| SURVEYED BY: DALLAS NIELSEN, G.W. | DATE: 12-10-15         |
| DRAWN BY: J.M.C.                  | DATE DRAWN: 12-14-15   |
| SCALE: 1" = 1000'                 | REVISED: 03-02-16 M.D. |

**WELL LOCATION PLAT**



**UELS, LLC**  
 Corporate Office \* 85 South 200 East  
 Vernal, UT 84078 \* (435) 789-1017