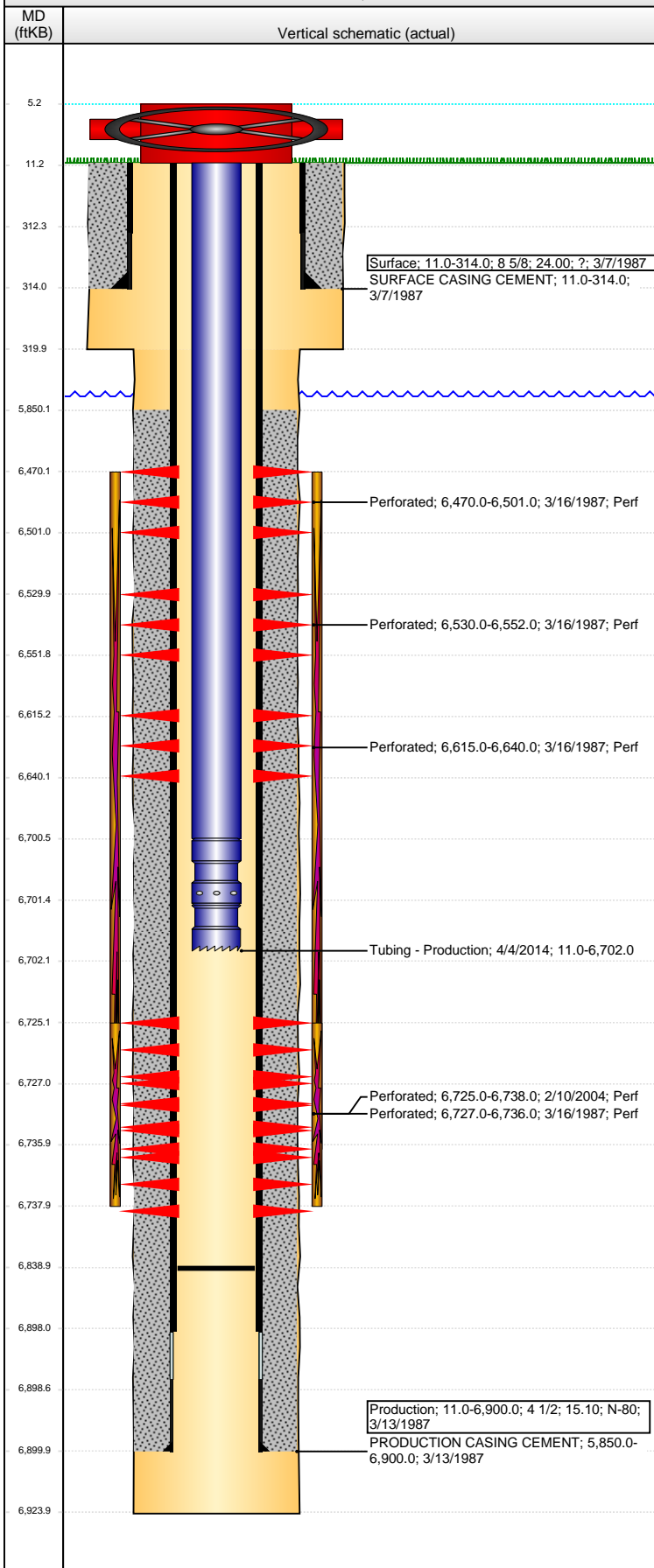


Well Name: TREBOR B10-15

VERTICAL - ORIGINAL HOLE, 3/28/2016 1:41:35 PM



Well Header

API	Business Unit	District	Well Config
05-123-13382	DJ BASIN	15	VERTICAL
Original KB Elevation (ft)	KB - GL / MSL (ftKB)	Spud Date	P & A Date
4,603	11.00	3/7/1987	

Comment
DISCREPANCY IN TD: DRL RPT TD 6905', ST RPT 6904', LOG TD 6924'.

Directions To Well
388 & 55 1/2, E 1/8, N INTO, E SIDE

Congressional Location

Quarter 1	Quarter 2	Quarter 3	Quarter 4	Section	Township	Twnshp N...	Range	Rng E/W Dir
		SW	SE	10	5	N	64	W

Bottom Hole Location

North-South Distance (ft)	From N or S Line	East-West Distance (ft)	From E or W Line

Plug Back Total Depths

Date	Depth (ftKB)	Method	Com
3/16/1987	6,812.0	CASED HOLE LOG	DEPTH LOGGER ON CBL
2/20/2004	6,870.0	TAG	CLN OUT
4/3/2014	6,839.0	TAG	C/O

Wellbore Sections

Section Des	Size (in)	Act Top, MD (ftKB)	Act Btm, MD (ftKB)
SURFACE	12 1/4	11.0	320.0
PRODUCTION	7 7/8	320.0	6,924.0

Zone Statuses

Zone Name	Status Date	Status	Fluid Type	Job	Prod Method
CODELL	4/24/1987	PR	Oil	DRILLING/CO...	
CODELL	2/23/2004	PR	Oil	RE-FRAC, 27/...	
NIOBRARA	4/24/1987	PR	Oil	DRILLING/CO...	

Casing Strings

Casing Description	Run Date	OD (in)	Wt/Len (l...)	Grade	Top, MD (ft...)	MD (ftKB)
Surface	3/7/1987	8 5/8	24.00	?	11.0	314.0

Production, 6,900.0ftKB

Casing Description	Run Date	OD (in)	Wt/Len (l...)	Grade	Top, MD (ft...)	MD (ftKB)
Production	3/13/1987	4 1/2	15.10	N-80	11.0	6,900.0

Cement

Description	Top Depth (ftKB)	Bottom Depth (ftKB)
SURFACE CASING CEMENT	11.0	314.0
Description	Top Depth (ftKB)	Bottom Depth (ftKB)
PRODUCTION CASING CEMENT	5,850.0	6,900.0

Tubing Strings

Tubing Description	Run Date	String...	ID (in)	Wt (lb/ft)	Grade	Len (ft)	Set De...
Tubing - Production	2/20/2004	2 3/8	1.995	4.70	J-55	6,701.00	
Tubing Description	Run Date	String...	ID (in)	Wt (lb/ft)	Grade	Len (ft)	Set De...
Tubing - Production	4/4/2014	2 3/8	1.995	4.70	J-55	6,690.99	

Tubing Components

Item Des	OD (in)	Wt (lb/ft)	Grade	Jts	Len (ft)	Btm (ftKB)	Btm (TVD) (ftKB)
EUE 8rd Tubing	2 3/8	4.70	J-55	203	6,689.39	6,700.4	
Pump Seating Nipple	2 3/8	1.10		1	1.10	6,701.5	
Notched collar	2 3/8			1	0.50	6,702.0	

Perforation Data

Zone	Bnch/St g	Entered Shot Total	Top (ftKB)	Btm (ftKB)	Date
NIOBRARA, ORIGINAL HOLE	A	3	6,470.00	6,501.00	3/16/1987
NIOBRARA, ORIGINAL HOLE	B	6	6,530.00	6,552.00	3/16/1987
NIOBRARA, ORIGINAL HOLE	C	2	6,615.00	6,640.00	3/16/1987
CODELL, ORIGINAL HOLE		52	6,725.00	6,738.00	2/10/2004
CODELL, ORIGINAL HOLE		5	6,727.00	6,736.00	3/16/1987

Stimulations & Treatments

Date	Zone	Primary Job Type
3/17/1987	NIOBRARA-CODELL, ORIGINAL HOLE	DRILLING/COMPLETION - ORIGINAL
Technical Result	Tech Result Details	Tech Result Note

Comment
LIMITED ENTRY

Well Name: TREBOR B10-15

VERTICAL - ORIGINAL HOLE, 3/28/2016 1:41:38 PM

Stimulations & Treatments

Date 2/16/2004	Zone CODELL, ORIGINAL HOLE	Primary Job Type RE-FRAC
Technical Result	Tech Result Details	Tech Result Note
Comment		

Other In Hole

Run Date	Des	OD (in)	Top (ftKB)	Btm (ftKB)

Logs

Date	Type	Top, MD (ftKB)	Btm, MD (ftKB)
3/12/1987	COMPENSATED NEUTRON	3,400.0	6,921.0
3/12/1987	INDUCTION	300.0	6,918.0
3/16/1987	CBL/CCL/GR	5,625.0	6,804.0
3/16/1987	PERFORATION	6,470.0	6,736.0

