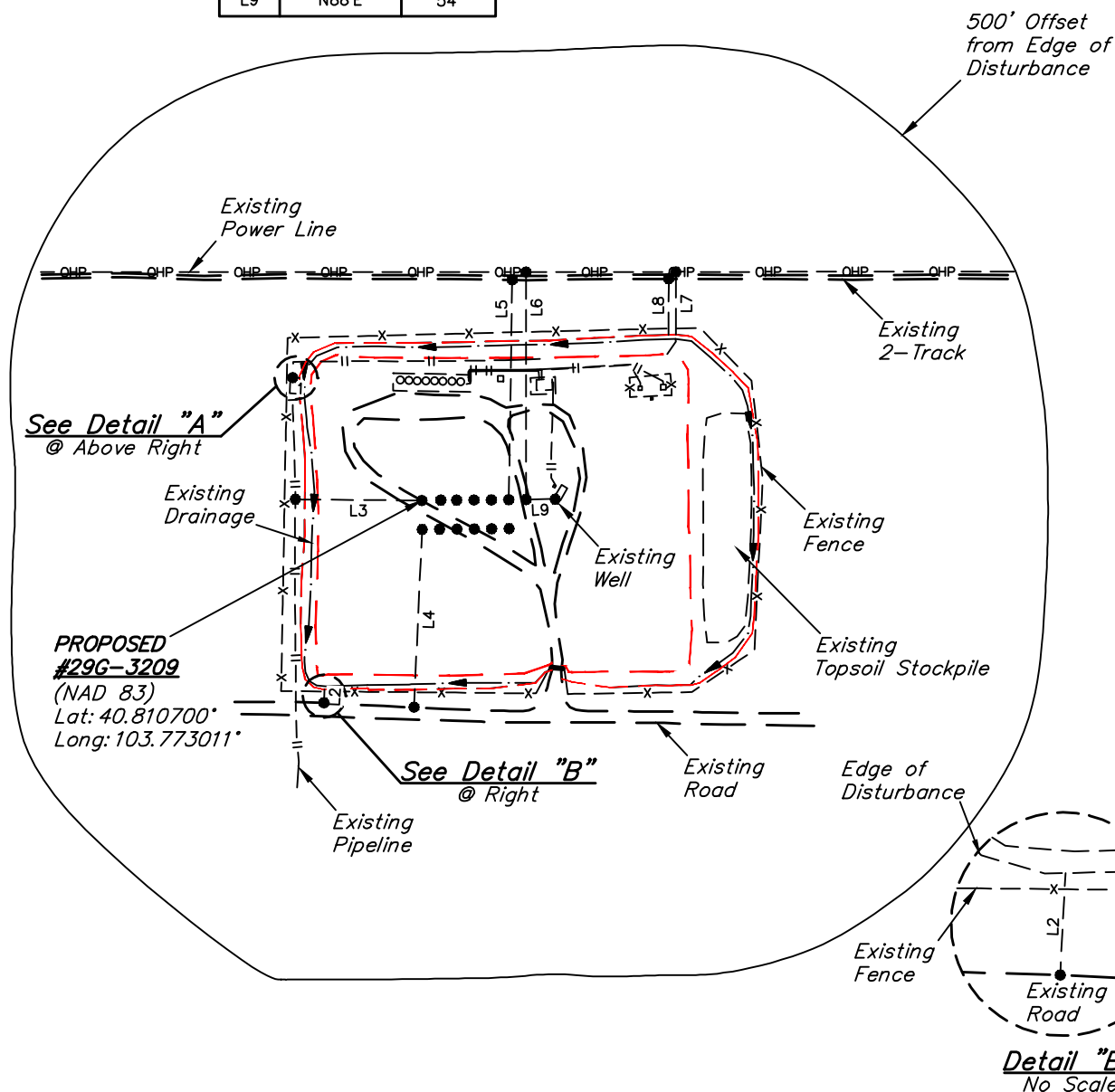
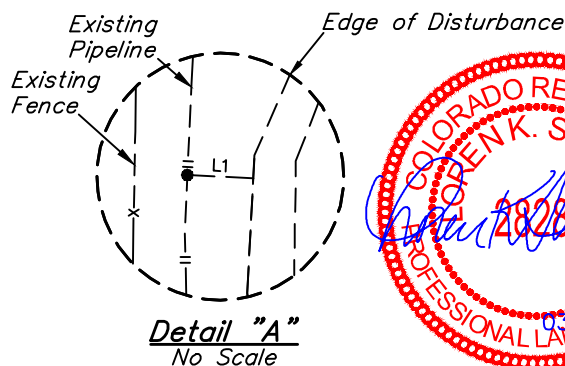


LINE TABLE		
LINE	DIRECTION	LENGTH
L1	N87°W	12'
L2	S03°W	24'
L3	N89°W	219'
L4	S03°W	307'
L5	N01°E	380'
L6	NORTH	393'
L7	NORTH	108'
L8	NORTH	97'
L9	N88°E	54'



WHITING OIL & GAS CORP.

HORSETAIL #29G-3209, 3242, 3210, 3243, 3211,
3244, 3212, 2009, 2042, 2010, 2043, 2011, 2044
ON EXISTING HORSETAIL #29G-2012B WELL PAD
SW 1/4 NE 1/4, SECTION 29, T10N, R57W, 6th P.M.
WELD COUNTY, COLORADO

SURVEYED BY: DALLAS NIELSEN, G.W.	SURVEY DATE: 12-10-15
DRAWN BY: J.M.C.	DATE DRAWN: 12-14-15
SCALE: 1" = 300'	REVISED: 03-08-16 M.D.

LOCATION DRAWING



UELS, LLC
Corporate Office * 85 South 200 East
Vernal, UT 84078 * (435) 789-1017