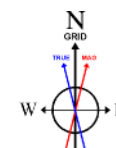
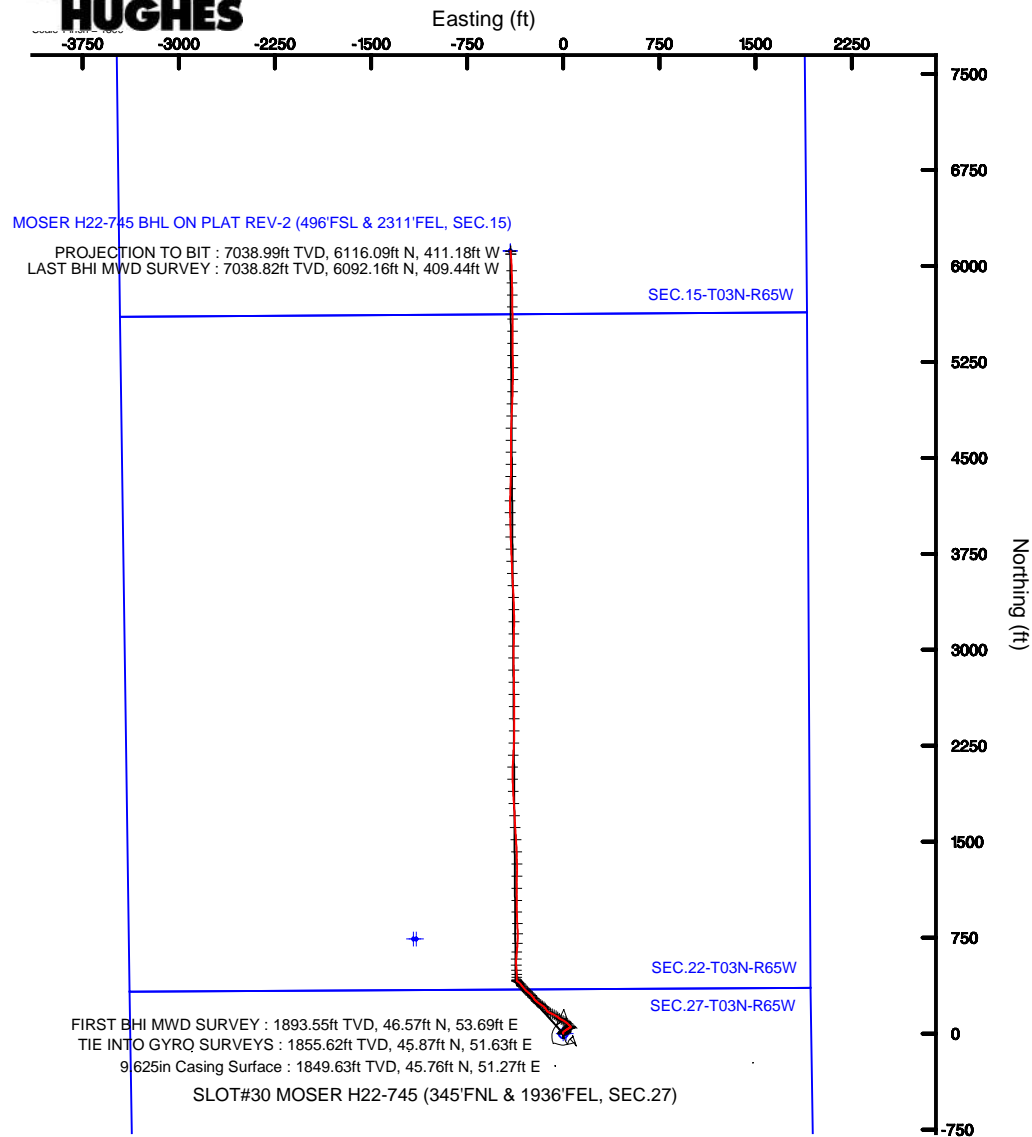
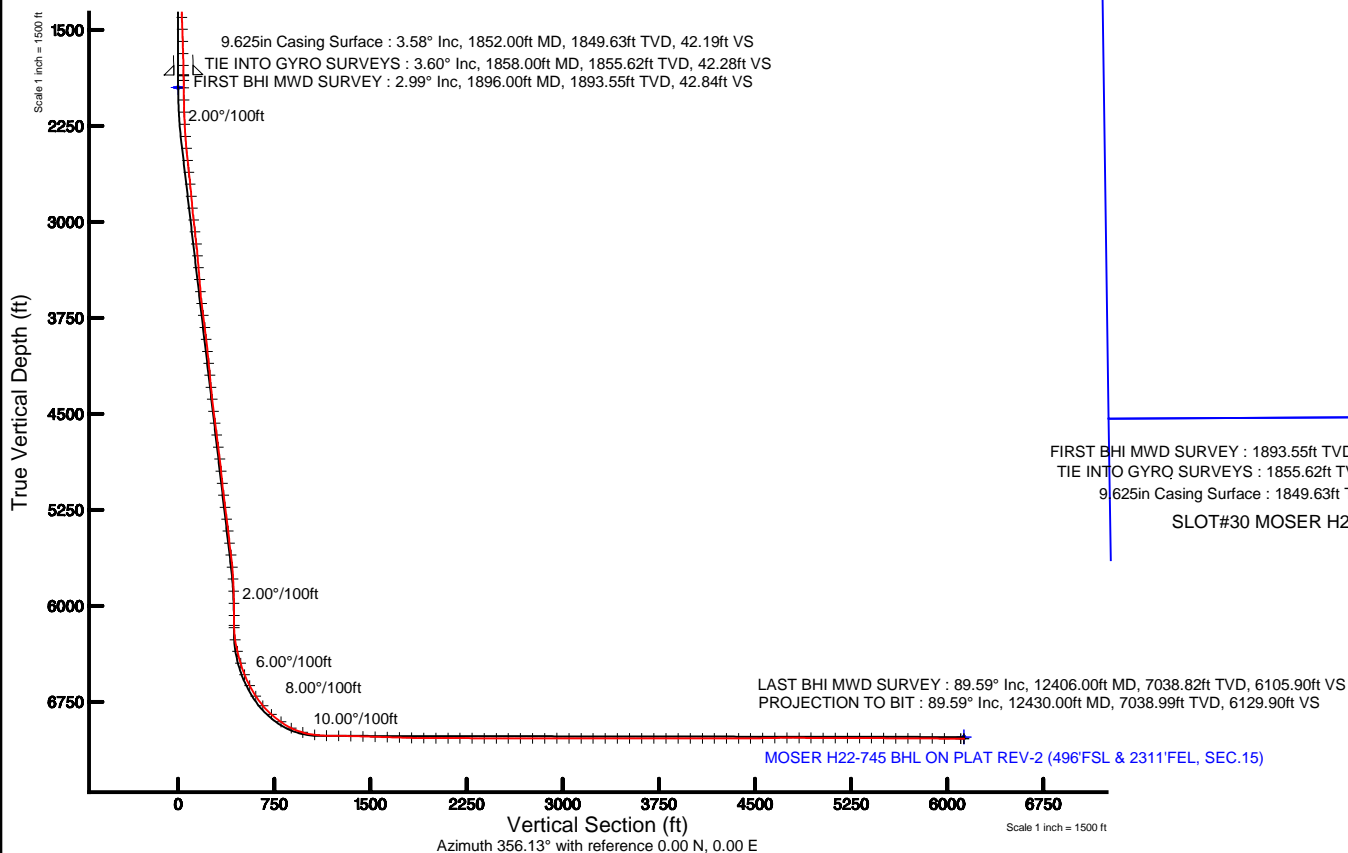


NOBLE ENERGY, INC

Location: COLORADO Slot: SLOT#30 MOSER H22-745 (345°FNL & 1936°FEL, SEC.27)
 Field: WELD COUNTY (NOBLE NAD 83 GRID) Well: MOSER H22-745
 Facility: SEC.27-T03N-R65W Wellbore: MOSER H22-745 PWB

Plot reference wellpath is MOSER H22-745 (REV-B.0) PWB	
True vertical depths are referenced to H&P 321 (RKB)	Grid System: NAD83 / Lambert Colorado SP, Northern Zone (501), US feet
Measured depths are referenced to H&P 321 (RKB)	North Reference: Grid north
H&P 321 (RKB) to Mean Sea Level: 4841 feet	Scale: True distance
Mean Sea Level to Mud line (At Slot: SLOT#30 MOSER H22-745 (345°FNL & 1936°FEL, SEC.27)): 0 feet	Depths are in feet
Coordinates are in feet referenced to Slot	Created by: adamkat on 1/5/2016



BGGM (1945.0 to 2017.0) Dip: 66.82° Field: 52496.9 nT
 Magnetic North is 8.44 degrees East of True North (at 11/18/2015)
 Grid North is 0.55 degrees East of True North
 To correct azimuth from True to Grid subtract 0.55 degrees
 To correct azimuth from Magnetic to Grid add 7.89 degrees

REFERENCE WELLPATH IDENTIFICATION			
Operator	NOBLE ENERGY, INC	Slot	SLOT#30 MOSER H22-745 (345'FNL & 1936'FEL, SEC.27)
Area	COLORADO	Well	MOSER H22-745
Field	WELD COUNTY (NOBLE NAD 83 GRID)	Wellbore	MOSER H22-745
Facility	SEC.27-T03N-R65W		

REPORT SETUP INFORMATION			
Projection System	NAD83 / Lambert Colorado SP, Northern Zone (501), US feet	Software System	WellArchitect® 4.1.1
North Reference	Grid	User	Adamkat
Scale	0.999957	Report Generated	1/5/2016 at 10:22:37 AM
Convergence at slot	0.55° East	Database/Source file	WA_DEN_Denver_Defn/MOSER_H22-745.xml

WELLPATH LOCATION						
	Local coordinates		Grid coordinates		Geographic coordinates	
	North[ft]	East[ft]	Easting[US ft]	Northing[US ft]	Latitude	Longitude
Slot Location	228.71	-1479.10	3238209.57	1317831.52	40°12'09.720"N	104°38'49.812"W
Facility Reference Pt			3239688.60	1317602.82	40°12'07.319"N	104°38'30.779"W
Field Reference Pt			3000000.00	4454105.15	48°46'34.315"N	105°30'00.000"W

WELLPATH DATUM			
Calculation method	Minimum curvature	H&P 321 (RKB) to Facility Vertical Datum	4841.00ft
Horizontal Reference Pt	Slot	H&P 321 (RKB) to Mean Sea Level	4841.00ft
Vertical Reference Pt	H&P 321 (RKB)	H&P 321 (RKB) to Mud Line at Slot (SLOT#30 MOSER H22-745 (345'FNL & 1936'FEL, SEC.27))	4841.00ft
MD Reference Pt	H&P 321 (RKB)	Section Origin	N 0.00, E 0.00 ft
Field Vertical Reference	Mean Sea Level	Section Azimuth	356.13°

REFERENCE WELLPATH IDENTIFICATION

Operator	NOBLE ENERGY, INC	Slot	SLOT#30 MOSER H22-745 (345°FNL & 1936°FEL, SEC.27)
Area	COLORADO	Well	MOSER H22-745
Field	WELD COUNTY (NOBLE NAD 83 GRID)	Wellbore	MOSER H22-745
Facility	SEC.27-T03N-R65W		

WELLPATH DATA (115 stations)

MD [ft]	Inclination [°]	Azimuth [°]	TVD [ft]	Vert Sect [ft]	North [ft]	East [ft]	Latitude	Longitude	DLS [°/100ft]	Comments
1858.00	3.600	73.040	1855.62	42.28	45.87	51.63	40°12'10.168"N	104°38'49.141"W	0.64	TIE INTO GYRO SURVEYS
1896.00	2.990	69.300	1893.55	42.84	46.57	53.69	40°12'10.175"N	104°38'49.114"W	1.70	FIRST BHI MWD SURVEY
1955.00	2.320	68.050	1952.49	43.65	47.56	56.24	40°12'10.185"N	104°38'49.081"W	1.14	
2050.00	1.210	33.650	2047.44	45.05	49.11	58.58	40°12'10.200"N	104°38'49.051"W	1.57	
2144.00	1.980	327.030	2141.41	47.25	51.30	58.25	40°12'10.221"N	104°38'49.055"W	1.99	
2239.00	3.480	323.790	2236.30	51.12	55.00	55.65	40°12'10.258"N	104°38'49.088"W	1.59	
2334.00	5.360	320.260	2331.02	57.15	60.74	51.11	40°12'10.315"N	104°38'49.146"W	2.00	
2428.00	6.960	311.560	2424.47	64.77	67.90	44.04	40°12'10.387"N	104°38'49.236"W	1.97	
2523.00	8.190	312.520	2518.64	73.77	76.29	34.75	40°12'10.471"N	104°38'49.355"W	1.30	
2618.00	9.060	314.020	2612.57	84.22	86.06	24.38	40°12'10.568"N	104°38'49.487"W	0.95	
2712.00	9.040	301.620	2705.41	94.00	95.07	12.77	40°12'10.658"N	104°38'49.636"W	2.07	
2807.00	10.160	297.600	2799.08	102.70	102.87	-1.01	40°12'10.737"N	104°38'49.812"W	1.37	
2901.00	10.030	295.930	2891.62	111.10	110.29	-15.72	40°12'10.811"N	104°38'50.001"W	0.34	
2996.00	10.050	304.900	2985.17	120.40	118.65	-29.96	40°12'10.895"N	104°38'50.183"W	1.64	
3090.00	10.070	309.830	3077.73	131.21	128.61	-43.00	40°12'10.995"N	104°38'50.350"W	0.92	
3185.00	10.100	303.500	3171.26	142.01	138.52	-56.32	40°12'11.094"N	104°38'50.521"W	1.17	
3279.00	10.150	295.660	3263.80	151.09	146.66	-70.66	40°12'11.176"N	104°38'50.704"W	1.47	
3374.00	9.990	293.710	3357.34	159.03	153.60	-85.75	40°12'11.246"N	104°38'50.898"W	0.40	
3469.00	9.960	297.260	3450.91	167.10	160.68	-100.60	40°12'11.317"N	104°38'51.089"W	0.65	
3563.00	8.190	293.670	3543.73	174.39	167.09	-113.96	40°12'11.382"N	104°38'51.260"W	1.98	
3658.00	8.430	318.810	3637.76	183.06	175.05	-124.75	40°12'11.462"N	104°38'51.398"W	3.80	
3752.00	9.000	331.680	3730.68	195.24	186.71	-132.77	40°12'11.578"N	104°38'51.500"W	2.16	
3847.00	9.040	318.010	3824.52	207.87	198.80	-141.29	40°12'11.698"N	104°38'51.608"W	2.25	
3942.00	9.160	309.500	3918.33	218.94	209.15	-152.12	40°12'11.801"N	104°38'51.747"W	1.42	
4037.00	9.100	306.490	4012.12	228.99	218.43	-164.00	40°12'11.894"N	104°38'51.898"W	0.51	
4131.00	8.890	304.800	4104.97	238.35	227.00	-175.94	40°12'11.980"N	104°38'52.051"W	0.36	
4226.00	8.440	304.230	4198.88	247.23	235.11	-187.73	40°12'12.061"N	104°38'52.202"W	0.48	
4321.00	8.320	306.010	4292.87	255.94	243.07	-199.05	40°12'12.141"N	104°38'52.347"W	0.30	
4415.00	8.360	315.380	4385.88	265.48	251.93	-209.35	40°12'12.229"N	104°38'52.479"W	1.44	
4510.00	9.040	318.800	4479.79	276.65	262.46	-219.12	40°12'12.334"N	104°38'52.603"W	0.90	
4605.00	9.040	322.780	4573.61	288.82	274.02	-228.55	40°12'12.449"N	104°38'52.723"W	0.66	
4699.00	8.700	320.480	4666.48	300.76	285.39	-237.54	40°12'12.563"N	104°38'52.838"W	0.52	
4794.00	9.100	320.250	4760.34	312.69	296.71	-246.92	40°12'12.675"N	104°38'52.957"W	0.42	
4889.00	9.020	313.670	4854.16	324.27	307.62	-257.11	40°12'12.784"N	104°38'53.087"W	1.09	
4985.00	8.770	308.190	4949.00	334.72	317.35	-268.31	40°12'12.881"N	104°38'53.230"W	0.92	
5080.00	8.650	310.400	5042.91	344.56	326.45	-279.44	40°12'12.972"N	104°38'53.373"W	0.37	
5174.00	8.510	312.640	5135.86	354.54	335.75	-289.94	40°12'13.065"N	104°38'53.507"W	0.39	
5269.00	9.990	320.800	5229.62	366.36	346.89	-300.32	40°12'13.176"N	104°38'53.639"W	2.08	
5363.00	8.540	317.790	5322.39	378.49	358.38	-310.16	40°12'13.291"N	104°38'53.765"W	1.63	
5458.00	8.380	321.400	5416.36	389.71	369.02	-319.22	40°12'13.397"N	104°38'53.880"W	0.58	
5553.00	8.100	321.390	5510.38	400.90	379.66	-327.71	40°12'13.503"N	104°38'53.988"W	0.29	
5648.00	8.380	321.110	5604.40	412.07	390.28	-336.24	40°12'13.608"N	104°38'54.097"W	0.30	
5742.00	7.420	314.040	5697.51	422.18	399.83	-344.90	40°12'13.704"N	104°38'54.207"W	1.45	
5837.00	4.950	295.460	5791.96	428.74	405.86	-353.01	40°12'13.764"N	104°38'54.311"W	3.31	
5932.00	3.560	304.190	5886.69	432.57	409.27	-359.15	40°12'13.798"N	104°38'54.390"W	1.61	

REFERENCE WELLPATH IDENTIFICATION

Operator	NOBLE ENERGY, INC	Slot	SLOT#30 MOSER H22-745 (345'FNL & 1936'FEL, SEC.27)
Area	COLORADO	Well	MOSER H22-745
Field	WELD COUNTY (NOBLE NAD 83 GRID)	Wellbore	MOSER H22-745
Facility	SEC.27-T03N-R65W		

WELLPATH DATA (115 stations)

MD [ft]	Inclination [°]	Azimuth [°]	TVD [ft]	Vert Sect [ft]	North [ft]	East [ft]	Latitude	Longitude	DLS [°/100ft]	Comments
6026.00	1.780	321.850	5980.59	435.57	412.06	-362.47	40°12'13.826"N	104°38'54.432"W	2.06	
6121.00	0.080	196.540	6075.58	436.73	413.16	-363.40	40°12'13.837"N	104°38'54.444"W	1.92	
6199.00	0.000	357.200	6153.58	436.68	413.11	-363.41	40°12'13.837"N	104°38'54.444"W	0.10	
6216.00	0.140	333.730	6170.58	436.70	413.13	-363.42	40°12'13.837"N	104°38'54.444"W	0.82	
6311.00	9.010	359.680	6265.18	444.25	420.68	-363.52	40°12'13.912"N	104°38'54.445"W	9.35	
6405.00	13.710	3.470	6357.31	462.65	439.17	-362.88	40°12'14.094"N	104°38'54.434"W	5.06	
6500.00	16.320	357.020	6449.07	487.17	463.75	-362.90	40°12'14.337"N	104°38'54.431"W	3.26	
6594.00	21.780	355.200	6537.89	517.83	494.34	-365.04	40°12'14.639"N	104°38'54.455"W	5.84	
6689.00	28.040	358.110	6624.01	557.81	534.26	-367.26	40°12'15.034"N	104°38'54.479"W	6.71	
6784.00	33.010	2.260	6705.83	605.89	582.47	-366.97	40°12'15.511"N	104°38'54.469"W	5.68	
6878.00	40.050	5.790	6781.32	661.24	638.22	-362.91	40°12'16.061"N	104°38'54.410"W	7.81	
6973.00	49.210	3.820	6848.86	727.16	704.65	-357.42	40°12'16.717"N	104°38'54.331"W	9.75	
7068.00	54.770	358.490	6907.36	801.66	779.42	-356.04	40°12'17.456"N	104°38'54.304"W	7.33	
7163.00	63.970	357.410	6955.71	883.27	861.02	-359.00	40°12'18.262"N	104°38'54.332"W	9.73	
7258.00	73.630	358.110	6990.03	971.70	949.42	-362.44	40°12'19.136"N	104°38'54.365"W	10.19	
7352.00	83.140	359.950	7008.93	1063.55	1041.37	-363.97	40°12'20.045"N	104°38'54.374"W	10.30	
7447.00	89.260	0.810	7015.23	1158.03	1136.11	-363.34	40°12'20.981"N	104°38'54.354"W	6.51	
7542.00	89.320	0.790	7016.40	1252.71	1231.09	-362.01	40°12'21.919"N	104°38'54.325"W	0.07	
7636.00	88.760	359.500	7017.98	1346.46	1325.08	-361.77	40°12'22.848"N	104°38'54.310"W	1.50	
7731.00	88.050	357.310	7020.62	1441.35	1420.00	-364.42	40°12'23.786"N	104°38'54.333"W	2.42	
7826.00	88.150	356.750	7023.77	1536.28	1514.82	-369.34	40°12'24.724"N	104°38'54.384"W	0.60	
7921.00	88.430	356.510	7026.61	1631.23	1609.61	-374.92	40°12'25.661"N	104°38'54.444"W	0.39	
8016.00	88.240	356.760	7029.37	1726.19	1704.41	-380.49	40°12'26.598"N	104°38'54.505"W	0.33	
8110.00	88.120	356.500	7032.35	1820.14	1798.20	-386.02	40°12'27.526"N	104°38'54.564"W	0.30	
8205.00	89.380	356.810	7034.43	1915.11	1893.01	-391.56	40°12'28.463"N	104°38'54.624"W	1.37	
8300.00	89.900	358.130	7035.02	2010.08	1987.91	-395.75	40°12'29.401"N	104°38'54.666"W	1.49	
8395.00	90.120	2.440	7035.01	2104.81	2082.89	-395.28	40°12'30.340"N	104°38'54.648"W	4.54	
8489.00	90.020	4.010	7034.89	2198.09	2176.74	-389.99	40°12'31.267"N	104°38'54.569"W	1.67	
8584.00	89.650	2.200	7035.17	2292.38	2271.60	-384.84	40°12'32.203"N	104°38'54.490"W	1.94	
8679.00	89.620	0.210	7035.77	2387.00	2366.57	-382.85	40°12'33.142"N	104°38'54.453"W	2.09	
8774.00	89.720	359.740	7036.32	2481.79	2461.57	-382.89	40°12'34.080"N	104°38'54.442"W	0.51	
8868.00	89.750	359.550	7036.75	2575.61	2555.56	-383.47	40°12'35.009"N	104°38'54.438"W	0.20	
8963.00	90.240	359.360	7036.76	2670.45	2650.56	-384.37	40°12'35.948"N	104°38'54.437"W	0.55	
9058.00	90.240	359.310	7036.36	2765.30	2745.55	-385.48	40°12'36.887"N	104°38'54.440"W	0.05	
9153.00	90.390	358.950	7035.84	2860.17	2840.54	-386.92	40°12'37.826"N	104°38'54.447"W	0.41	
9248.00	90.170	0.130	7035.38	2955.00	2935.53	-387.68	40°12'38.764"N	104°38'54.445"W	1.26	
9342.00	89.650	0.620	7035.52	3048.74	3029.53	-387.07	40°12'39.693"N	104°38'54.425"W	0.76	
9437.00	89.810	1.440	7035.97	3143.39	3124.51	-385.36	40°12'40.632"N	104°38'54.392"W	0.88	
9531.00	89.930	0.120	7036.19	3237.08	3218.50	-384.08	40°12'41.560"N	104°38'54.363"W	1.41	
9626.00	89.870	358.770	7036.35	3331.92	3313.49	-385.00	40°12'42.499"N	104°38'54.363"W	1.42	
9721.00	90.420	357.350	7036.11	3426.86	3408.44	-388.22	40°12'43.437"N	104°38'54.393"W	1.60	
9815.00	90.050	356.590	7035.73	3520.85	3502.30	-393.18	40°12'44.365"N	104°38'54.446"W	0.90	
9910.00	89.900	357.210	7035.77	3615.84	3597.16	-398.32	40°12'45.303"N	104°38'54.500"W	0.67	
10005.00	89.780	357.450	7036.03	3710.82	3692.06	-402.75	40°12'46.241"N	104°38'54.545"W	0.28	
10099.00	89.900	357.750	7036.29	3804.79	3785.98	-406.68	40°12'47.170"N	104°38'54.584"W	0.34	

REFERENCE WELLPATH IDENTIFICATION

Operator	NOBLE ENERGY, INC	Slot	SLOT#30 MOSER H22-745 (345°FNL & 1936°FEL, SEC.27)
Area	COLORADO	Well	MOSER H22-745
Field	WELD COUNTY (NOBLE NAD 83 GRID)	Wellbore	MOSER H22-745
Facility	SEC.27-T03N-R65W		

WELLPATH DATA (115 stations)

MD [ft]	Inclination [°]	Azimuth [°]	TVD [ft]	Vert Sect [ft]	North [ft]	East [ft]	Latitude	Longitude	DLS [°/100ft]	Comments
10194.00	89.960	358.530	7036.41	3899.73	3880.93	-409.77	40°12'48.108"N	104°38'54.612"W	0.82	
10289.00	90.020	358.360	7036.43	3994.65	3975.89	-412.34	40°12'49.047"N	104°38'54.634"W	0.19	
10384.00	89.750	358.930	7036.62	4089.56	4070.86	-414.59	40°12'49.986"N	104°38'54.651"W	0.66	
10478.00	90.020	0.610	7036.81	4183.37	4164.86	-414.97	40°12'50.915"N	104°38'54.644"W	1.81	
10573.00	89.900	2.040	7036.87	4277.97	4259.83	-412.77	40°12'51.853"N	104°38'54.604"W	1.51	
10668.00	89.990	2.190	7036.96	4372.46	4354.77	-409.27	40°12'52.791"N	104°38'54.547"W	0.18	
10762.00	90.460	359.700	7036.59	4466.12	4448.75	-407.72	40°12'53.719"N	104°38'54.516"W	2.70	
10857.00	91.960	359.030	7034.59	4560.94	4543.72	-408.77	40°12'54.658"N	104°38'54.518"W	1.73	
10951.00	90.360	0.700	7032.69	4654.71	4637.69	-408.99	40°12'55.586"N	104°38'54.509"W	2.46	
11046.00	90.140	2.000	7032.27	4749.32	4732.66	-406.75	40°12'56.524"N	104°38'54.468"W	1.39	
11141.00	89.740	2.260	7032.37	4843.80	4827.59	-403.22	40°12'57.462"N	104°38'54.411"W	0.50	
11235.00	89.780	2.510	7032.76	4937.24	4921.51	-399.31	40°12'58.390"N	104°38'54.349"W	0.27	
11330.00	89.870	1.500	7033.05	5031.74	5016.45	-395.98	40°12'59.328"N	104°38'54.294"W	1.07	
11425.00	89.780	0.590	7033.34	5126.39	5111.44	-394.25	40°13'00.266"N	104°38'54.260"W	0.96	
11519.00	89.810	359.900	7033.68	5220.14	5205.43	-393.85	40°13'01.195"N	104°38'54.243"W	0.73	
11614.00	89.780	359.230	7034.02	5314.97	5300.43	-394.57	40°13'02.134"N	104°38'54.241"W	0.71	
11708.00	89.680	359.600	7034.46	5408.82	5394.42	-395.53	40°13'03.063"N	104°38'54.242"W	0.41	
11803.00	89.620	359.860	7035.04	5503.63	5489.42	-395.98	40°13'04.001"N	104°38'54.236"W	0.28	
11898.00	89.750	359.520	7035.57	5598.44	5584.42	-396.49	40°13'04.940"N	104°38'54.231"W	0.38	
11993.00	89.650	359.490	7036.06	5693.28	5679.41	-397.31	40°13'05.879"N	104°38'54.229"W	0.11	
12087.00	89.710	359.240	7036.59	5787.13	5773.41	-398.36	40°13'06.808"N	104°38'54.231"W	0.27	
12182.00	89.560	358.830	7037.19	5882.00	5868.39	-399.96	40°13'07.747"N	104°38'54.240"W	0.46	
12277.00	89.590	358.040	7037.90	5976.92	5963.35	-402.55	40°13'08.685"N	104°38'54.262"W	0.83	
12406.00	89.590	355.840	7038.82	6105.90	6092.16	-409.44	40°13'09.959"N	104°38'54.334"W	1.71	LAST BHI MWD SURVEY
12430.00	89.590	355.840	7038.99	6129.90	6116.09	-411.18	40°13'10.195"N	104°38'54.354"W	0.00	PROJECTION TO BIT

HOLE & CASING SECTIONS - Ref Wellbore: MOSER H22-745 Ref Wellpath: MOSER H22-745 AWP

String/Diameter	Start MD [ft]	End MD [ft]	Interval [ft]	Start TVD [ft]	End TVD [ft]	Start N/S [ft]	Start E/W [ft]	End N/S [ft]	End E/W [ft]
9.625in Casing Surface	0.00	1852.00	1852.00	0.00	1849.63	0.00	0.00	45.76	51.27
8.5in Open Hole	1875.00	12430.00	10555.00	1872.58	7038.99	46.18	52.60	6116.09	-411.18

REFERENCE WELLPATH IDENTIFICATION

Operator	NOBLE ENERGY, INC	Slot	SLOT#30 MOSER H22-745 (345'FNL & 1936'FEL, SEC.27)
Area	COLORADO	Well	MOSER H22-745
Field	WELD COUNTY (NOBLE NAD 83 GRID)	Wellbore	MOSER H22-745
Facility	SEC.27-T03N-R65W		

TARGETS

Name	TVD [ft]	North [ft]	East [ft]	Grid East [US ft]	Grid North [US ft]	Latitude	Longitude	Shape
SEC.15-T03N-R65W	0.00	0.21	22.35	3238231.91	1317831.74	40°12'09.720"N	104°38'49.524"W	polygon
SEC.22-T03N-R65W	1.00	739.49	-1146.81	3237062.81	1318570.98	40°12'17.136"N	104°39'04.500"W	polygon
SEC.27-T03N-R65W	1.00	739.27	-1169.16	3237040.46	1318570.76	40°12'17.136"N	104°39'04.788"W	polygon
MOSER H22-745 KOP (35' RADII)	1950.00	0.00	0.00	3238209.57	1317831.52	40°12'09.720"N	104°38'49.812"W	circle
MOSER H22-745 BHL ON PLAT REV-1 (496'FSL & 2311'FEL, SEC.15)	6995.70	6116.55	-413.51	3237796.07	1323947.80	40°13'10.200"N	104°38'54.384"W	point
MOSER H22-745 BHL ON PLAT REV-2 (496'FSL & 2311'FEL, SEC.15)	7025.71	6116.55	-413.51	3237796.07	1323947.80	40°13'10.200"N	104°38'54.384"W	point
MOSER H22-745 DRILLING COORIDOR (35' L/R & 8' U/D)	7025.71	6116.55	-413.51	3237796.07	1323947.80	40°13'10.200"N	104°38'54.384"W	polygon

WELLPATH COMPOSITION - Ref Wellbore: MOSER H22-745 Ref Wellpath: MOSER H22-745 AWP

Start MD [ft]	End MD [ft]	Positional Uncertainty Model	Log Name/Comment	Wellbore
0.00	1858.00	Generic gyro - continuous (Standard)	GYRO SURFACE SURVEYS (GENERIC GYRO) 13 1/2" HOLE <0 - 1858>	MOSER H22-745
1858.00	12406.00	NaviTrak (MagCorr)	BHI MWD NAVITRAK (MAGCORR) 8 1/2" MONOBORE <1858 - 12430>	MOSER H22-745
12406.00	12430.00	Blind Drilling (std)	Projection to bit	MOSER H22-745

REFERENCE WELLPATH IDENTIFICATION			
Operator	NOBLE ENERGY, INC	Slot	SLOT#30 MOSER H22-745 (345'FNL & 1936'FEL, SEC.27)
Area	COLORADO	Well	MOSER H22-745
Field	WELD COUNTY (NOBLE NAD 83 GRID)	Wellbore	MOSER H22-745
Facility	SEC.27-T03N-R65W		

WELLPATH COMMENTS					
MD [ft]	Inclination [°]	Azimuth [°]	TVD [ft]	Comment	
1858.00	3.600	73.040	1855.62	TIE INTO GYRO SURVEYS	
1896.00	2.990	69.300	1893.55	FIRST BHI MWD SURVEY	
12406.00	89.590	355.840	7038.82	LAST BHI MWD SURVEY	
12430.00	89.590	355.840	7038.99	PROJECTION TO BIT	