

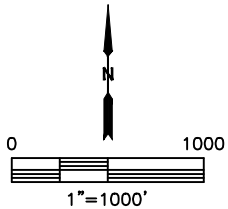
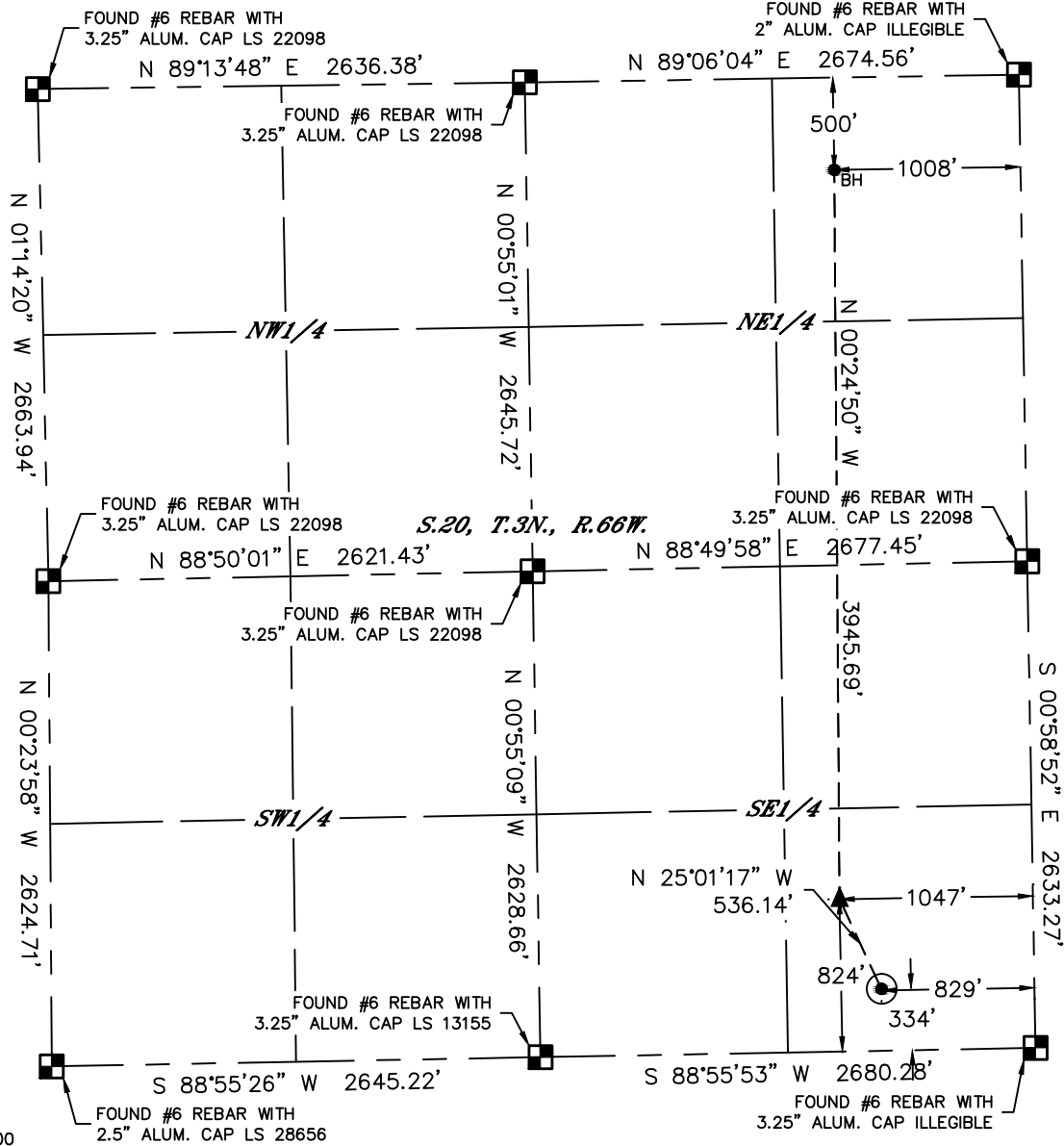


Lat40°, Inc. 6250 W. 10th Street, Unit 2, Greeley, CO 970-515-5294

# WELL LOCATION CERTIFICATE

**NILES MILLER 20T-221**

SECTION: 20  
TOWNSHIP: 3N  
RANGE: 66W  
6TH. P.M.  
WELD COUNTY, CO



**LEGEND**

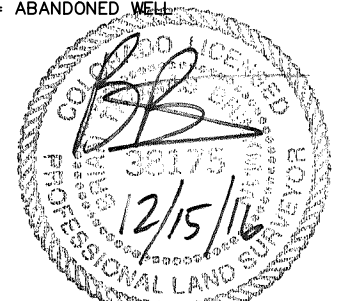
- = ALIQUOT MONUMENT AS DESCRIBED
- = CALCULATED POSITION
- = SURFACE HOLE LOCATION (SHL)
- ▲ = ENTRY POINT LOCATION (EP)
- BH = BOTTOM HOLE LOCATION (BHL)
- ⊙ = EXISTING WELL
- ⊙ = ABANDONED WELL

CLIENT: PDC ENERGY			LANDMAN: PATRICK FINLEY						
INSTRUMENT OPERATOR: CHASE MILLER			SURVEY DATE: 9/9/2015		SURFACE USE: CROPLAND				
SHL FOOTAGE	SHL LAT °	SHL LONG °	SHL PDOP	SHL ELEV	SHL 1/4/1/4	SHL S-T-R			
334	FSL	829	FEL	40.20403	-104.79457	1.6	4955	SESE	20-3-66

BHL FOOTAGE	BHL LAT °	BHL LONG °	BHL S-T-R	EP LAT °	EP LONG °	EP S-T-R			
500	FNL	1008	FEL	40.21620	-104.79535	20-3-66	40.20537	-104.79537	20-3-66

**NOTE:**  
 1) Bearings shown are Grid Bearings of the Colorado State Plane Coordinate System, North Zone, North American Datum 1983. The lineal dimensions as contained herein are based upon the "U.S. Survey Foot."  
 2) Distances to section lines measured at 90 degrees from said section lines.  
 3) Ground elevations are based on an observed GPS elevation (NAVD 1988 DATUM).  
 4) Latitude and Longitude shown are (NAD 83 DATUM).  
 5) IMPROVEMENTS: See LOCATION DRAWING for all visible improvements within 500' of oil and gas location.  
 6) This map does not represent a boundary survey.

NEAREST CULTURAL ITEMS	
BUILDING	±566' SW
BUILDING UNIT	±595' SW
HIGH OCCUPANCY BUILDING UNIT	5280' +
DESIGNATED OUTSIDE ACTIVITY AREA	5280' +
PUBLIC ROAD (COUNTY ROAD 30)	±325' S
ABOVE GROUND UTILITY	±301' S
RAILROAD	5280' +
PROPERTY LINE	±334' S



Brian T. Brinkman—On behalf of Lat40°, Inc.  
 Colorado Licensed Professional Land Surveyor No. 38175  
 DATE: 12/15/2015  
 PROJECT#: 2015104