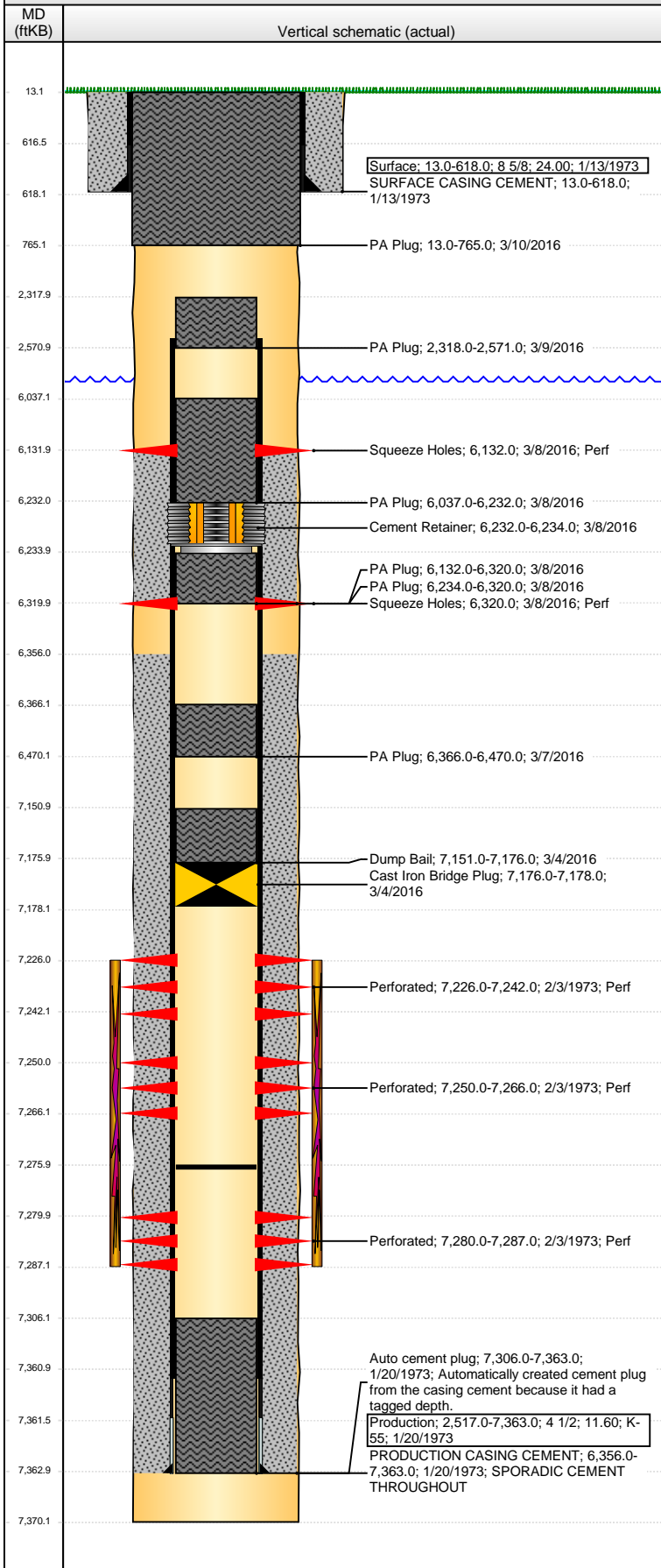


Well Name: **FEDERAL 14**

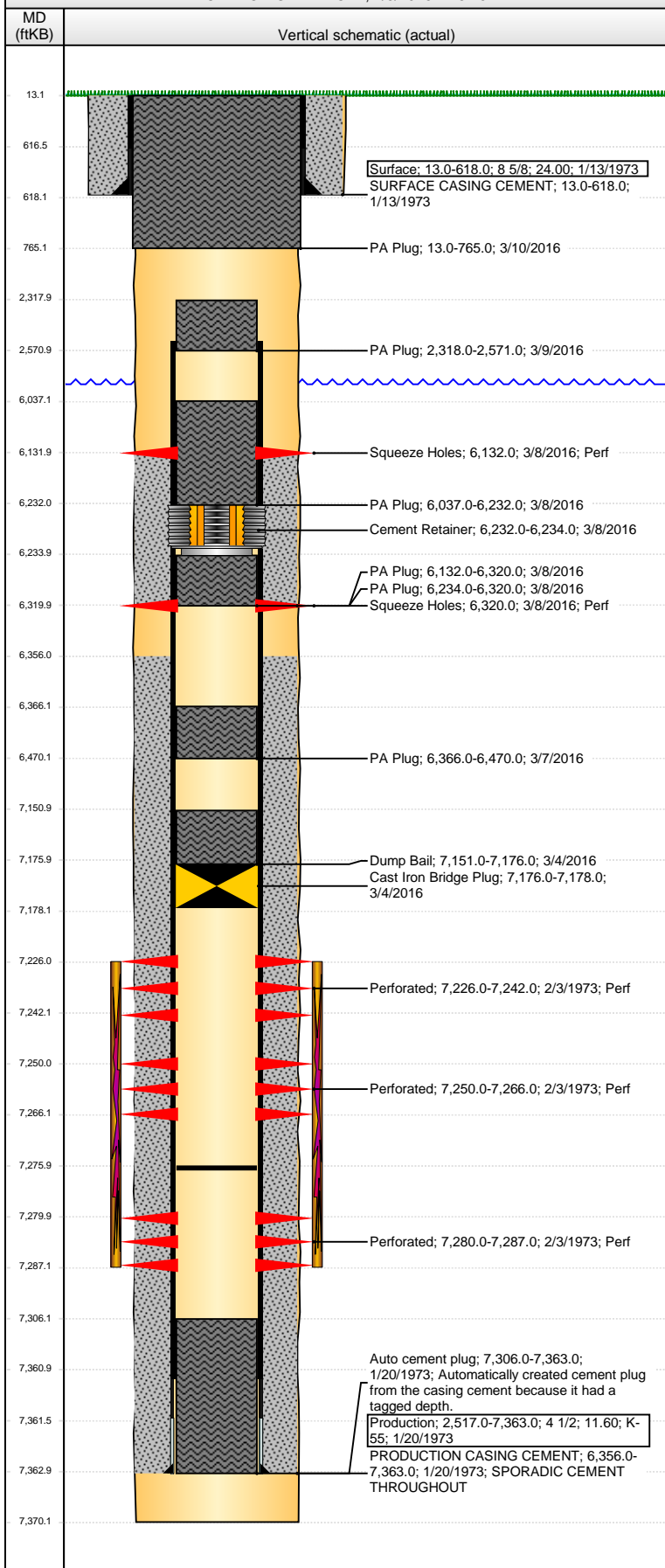
VERTICAL - ORIGINAL HOLE, 4/5/2016 4:28:13 PM



Well Header									
API 05-123-07634		Business Unit DJ BASIN		District 15		Well Config VERTICAL			
Original KB Elevation (ft) 4,803		KB - GL / MSL (ftKB) 13.00		Spud Date 1/13/1973		P & A Date 3/4/2016			
Comment									
Directions To Well									
Congressional Location									
Quarter 1	Quarter 2	Quarter 3	Quarter 4	Section	Township	Twnshp N...	Range	Rng E/W Dir	
		NW	NE	8	2	N	63	W	
Bottom Hole Location									
North-South Distance (ft)		From N or S Line		East-West Distance (ft)			From E or W Line		
Plug Back Total Depths									
Date		Depth (ftKB)		Method		Com			
1/20/1973		7,330.0		CASING TALLY		DEPTH LOGGER ON CBL TAG FILL			
2/3/1973		7,306.0		CASED HOLE LOG					
6/1/1989		7,276.0		TAG					
Wellbore Sections									
Section Des			Size (in)		Act Top, MD (ftKB)		Act Btm, MD (ftKB)		
SURFACE			12 1/4		13.0		618.0		
PRODUCTION			7 7/8		618.0		7,370.0		
Zone Statuses									
Zone Name		Status Date		Status		Fluid Type		Job	
J SAND		2/6/1973		PR		Water		DRILLING/CO...	
J SAND		5/11/2010		PR				Flowing	
J SAND		3/4/2016		P&A				ABANDON WE...	
Casing Strings									
Surface, 618.0ftKB									
Casing Description		Run Date		OD (in)		Wt/Len (l...		Grade	
Surface		1/13/1973		8 5/8		24.00		13.0	
								618.0	
Production, 7,363.0ftKB									
Casing Description		Run Date		OD (in)		Wt/Len (l...		Grade	
Production		1/20/1973		4 1/2		11.60		K-55	
								13.0	
								7,363.0	
Cement									
Description						Top Depth (ftKB)		Bottom Depth (ftKB)	
SURFACE CASING CEMENT						13.0		618.0	
Description						Top Depth (ftKB)		Bottom Depth (ftKB)	
PRODUCTION CASING CEMENT						6,356.0		7,363.0	
Description						Top Depth (ftKB)		Bottom Depth (ftKB)	
Dump Bail						7,151.0		7,176.0	
Description						Top Depth (ftKB)		Bottom Depth (ftKB)	
PA Plug						6,366.0		6,470.0	
Description						Top Depth (ftKB)		Bottom Depth (ftKB)	
PA Plug						6,234.0		6,320.0	
Description						Top Depth (ftKB)		Bottom Depth (ftKB)	
PA Plug						6,132.0		6,320.0	
Description						Top Depth (ftKB)		Bottom Depth (ftKB)	
PA Plug						6,037.0		6,232.0	
Description						Top Depth (ftKB)		Bottom Depth (ftKB)	
PA Plug						2,318.0		2,571.0	
Description						Top Depth (ftKB)		Bottom Depth (ftKB)	
PA Plug						13.0		765.0	
Tubing Strings									
Tubing Description		Run Date		String...		ID (in)		Wt (lb/ft)	
Tubing		2/6/1973		1.9		1.610		2.90	
								Grade	
								Len (ft)	
								Set De...	
								7,208.00	
Tubing Description		Run Date		String...		ID (in)		Wt (lb/ft)	
Tubing - Production		6/2/1989		1.9		1.610		2.75	
								Grade	
								Len (ft)	
								Set De...	
								7,224.00	
Perforation Data									
Zone		Bnch/St g		Entered Shot Total		Top (ftKB)		Btm (ftKB)	
								Date	
				2		6,132.00		6,132.00	
				2		6,320.00		6,320.00	
J SAND, ORIGINAL HOLE				16		7,226.00		7,242.00	
J SAND, ORIGINAL HOLE				16		7,250.00		7,266.00	
J SAND, ORIGINAL HOLE				7		7,280.00		7,287.00	
								2/3/2016	

**Well Name: FEDERAL 14**

VERTICAL - ORIGINAL HOLE, 4/5/2016 4:28:16 PM



## Stimulations & Treatments

Date	Zone	Primary Job Type
2/5/1973	J SAND, ORIGINAL HOLE	DRILLING/COMPLETION - ORIGINAL
Technical Result	Tech Result Details	Tech Result Note

Comment

## Other In Hole

Run Date	Des	OD (in)	Top (ftKB)	Btm (ftKB)
3/4/2016	Cast Iron Bridge Plug	3.99	7,176.0	7,178.0
3/8/2016	Cement Retainer	3.99	6,232.0	6,234.0

## Logs

Date	Type	Top, MD (ftKB)	Btm, MD (ftKB)
1/21/1973	COMPENSATED DENSITY	3,400.0	7,362.0
2/3/1973	CEMENT BOND	6,200.0	7,304.0
3/7/2016	CEMENT BOND	0.0	7,141.0