

HALLIBURTON

iCem[®] Service

CAERUS OIL AND GAS LLC - EBUS

For: Steve Schmitz

Date: Wednesday, December 30, 2015

PUCKETT 24A-1 Surface PJR

API# 05-045-22617-00

Job Date: Wednesday, December 30, 2015

Sincerely,

Grand Junction Cement Engineering

1.0 Real-Time Job Summary

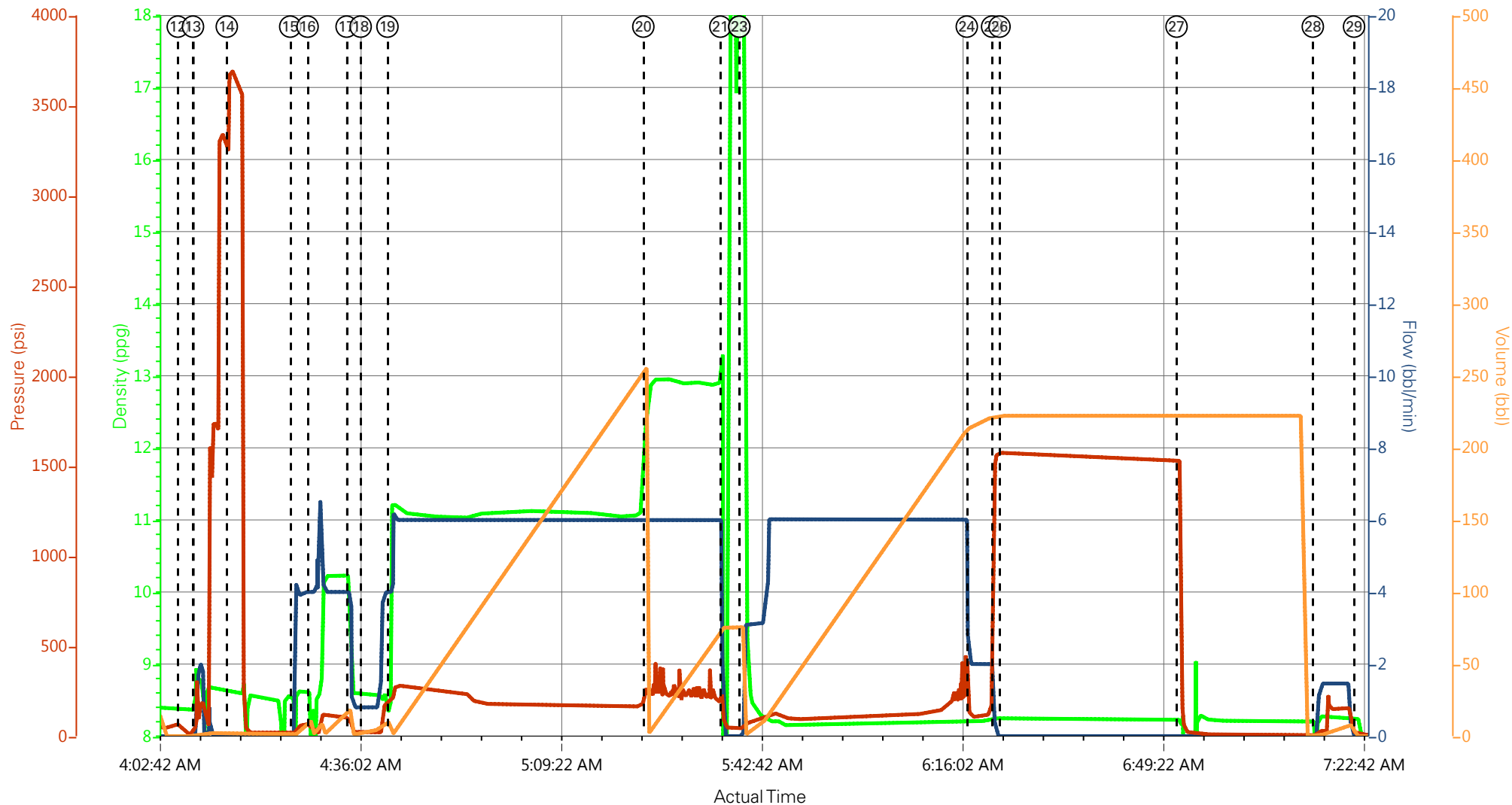
1.1 Job Event Log

Type	Seq. No.	Activity	Date	Time	Source	DH Density (ppg)	Comb Pump Rate (bbl/min)	PS Pump Press (psi)	Pump Stg Tot (bbl)	Comments
Event	1	Call Out	12/29/2015	16:00:00	USER					
Event	2	Pre-Convoy Safety Meeting	12/29/2015	17:45:00	USER					WITH ALL HES PERSONNEL
Event	3	Crew Leave Yard	12/29/2015	18:00:00	USER					
Event	4	Arrive At Loc	12/29/2015	21:00:00	USER					RIG RUNNING CASING UPON HES ARRIVAL
Event	5	Assessment Of Location Safety Meeting	12/29/2015	21:15:00	USER					WITH ALL HES PERSONNEL
Event	6	Other	12/29/2015	21:30:00	USER					1 PUMP, 2 660 BULK TRUCKS, 1 TRANSPORT, 1 SILO
Event	7	Pre-Rig Up Safety Meeting	12/29/2015	21:45:00	USER					WITH ALL HES PERSONNEL
Event	8	Rig-Up Equipment	12/29/2015	22:00:00	USER					
Event	9	Other	12/29/2015	23:00:00	USER					VERIFIED JOB CALCULATIONS AND PROCEDURES. OFFERED MSDS RECIEPT.
Event	10	Other	12/29/2015	23:15:00	USER					Water Test: 70 DEGREES, 6 PH, 1000 CHLORIDES
Event	11	Pre-Job Safety Meeting	12/30/2015	03:00:00	USER					WITH ALL PERSONNEL
Event	12	Start Job	12/30/2015	04:06:12	COM6					TD 2540 FT, TP 2526 FT, SJ 44.6 FT, CSG 9 5/8 IN 36 LB/FT J55, OH 14 3/4 IN, MUD 9.0.
Event	13	Prime Pumps	12/30/2015	04:08:44	COM6	8.4	2.0	197.0	2.0	FRESH WATER
Event	14	Test Lines	12/30/2015	04:14:21	COM6			3650.0		TESTED LINES TO 3650 PSI, PRESSURE HOLDING
Event	15	Pump Spacer 1	12/30/2015	04:24:53	COM6	8.4	4.0	200.0	10.0	10 BBL FRESH WATER
Event	16	Pump Spacer 2	12/30/2015	04:27:46	COM6	10.0	4.0	200.0	20.0	20 BBL SUPER FLUSH

Event	17	Pump Spacer 1	12/30/2015	04:34:15	COM6	8.4	2.0	89.00	10.0	10 BBL FRESH WATER
Event	18	Check Weight	12/30/2015	04:36:35	COM6					PRESSURIZED MUD SCALES
Event	19	Pump Lead Cement	12/30/2015	04:41:02	COM6	11.0	6.0	230.0	243.8	375 SKS VariCem GJ5 Lead, 11.0 PPG, 3.65 FT3/SK, 23.08 GAL/SK, WITH 90 LBS TUFF FIBER
Event	20	Pump Tail Cement	12/30/2015	05:23:32	COM6	12.8	6.0	200.0	62.1	160 SKS VariCem GJ5 Tail, 12.8 PPG, 2.18 FT3/SK, 12.11 GAL/SK
Event	21	Other	12/30/2015	05:36:20	COM6					
Event	22	Drop Top Plug	12/30/2015	05:39:27	COM6					PLUG LAUNCHED
Event	23	Pump Displacement	12/30/2015	05:39:29	COM6	8.4	6.0	290.0	191.8	FRESH WATER
Event	24	Slow Rate	12/30/2015	06:17:16	USER	8.4	2.0	100.0	181.8	SLOWED RATE 10 BBLS PRIOR TO CALCULATED DISPLACEMENT
Event	25	Bump Plug	12/30/2015	06:21:28	COM6			120.0		
Event	26	Other	12/30/2015	06:22:42	USER			1500.0		30 MINUTE CASING TEST AT 1500 PSI
Event	27	Other	12/30/2015	06:52:07	COM6					FLOATS HOLDING, HES RETURNED 2 BBLS BACK TO PUMP
Event	28	Other	12/30/2015	07:14:45	COM6	8.4	2.0	20.0	10.0	10 BBLS SUGAR WATER
Event	29	End Job	12/30/2015	07:21:36	COM6					PIPE WAS STATIC DURING JOB, NO RETURNS THROUGHOUT JOB. HES USED 10 LBS SUGAR.
Event	30	Start Job	12/30/2015	12:43:24	COM6					
Event	31	Prime Pumps	12/30/2015	12:44:35	COM6	8.4	2.0	80.0	1.0	FRESH WATER
Event	32	Check Weight	12/30/2015	12:49:27	COM6					PRESSURIZED MUD SCALES
Event	33	Pump Cement	12/30/2015	12:53:37	COM6	12.8	3.5	180.0	113.3	300 SKS ReverCem, 12.8 PPG, 2.12 FT3/SK, 11.15 GAL/SK, WITH 10 BBLS SUPER FLUSH
Event	34	Shutdown	12/30/2015	13:27:47	USER					
Event	35	Clean Lines	12/30/2015	13:29:10	COM6					CLEANED PUMPS AND LINES TO CATCH TANK
Event	36	End Job	12/30/2015	13:40:05	COM6					NO CIRCULATION THROUGHOUT JOB.
Event	37	Start Job	12/30/2015	15:49:53	COM6					

Event	38	Prime Pumps	12/30/2015	15:50:08	COM6	8.4	1.0	40.0	1.0	FRESH WATER AHEAD
Event	39	Pump Cement	12/30/2015	15:51:26	COM6	15.6	2.00	70.0	5.0	50 SKS Type I/II, 15.6 PPG, 1.18 FT3/SK, 5.2 GAL/SK, WITH 5 GALS CALCIUM-CHLORIDE
Event	40	Shutdown	12/30/2015	15:58:16	USER					
Event	41	Clean Lines	12/30/2015	15:59:03	COM6					CLEAN PUMPS AND LINES TO CATCH TANK
Event	42	End Job	12/30/2015	16:01:35	COM6					HES PUMPED CEMENT TO SURFACE, WAITED 10 MINUTES, CEMENT DID NOT FALL. HES USED 30 LBS SUGAR
Event	43	Pre-Rig Down Safety Meeting	12/30/2015	16:30:00	USER					WITH ALL HES PERSONNEL
Event	44	Rig-Down Equipment	12/30/2015	16:45:00	USER					
Event	45	Pre-Convoy Safety Meeting	12/30/2015	19:00:00	USER					WITH ALL HES PERSONNEL
Event	46	Crew Leave Location	12/30/2015	19:15:00	USER					
Event	47	Comment	12/30/2015	19:30:00	USER					THANK YOU FOR CHOOSING HALLIBURTON CEMENT DEPARTMENT, STEVEN WARDELL AND CREW.

CAERUS PUCKETT 24A-1 SURFACE



- | | | | | | | |
|-----------------------------------------|-----------------------------|--------------------------|---------------------------|----------------------|-----------------------|-----------------|
| ① Call Out | ⑥ Spot Equipment | ⑪ Pre-Job Safety Meeting | ⑯ Pump Super Flush Spacer | 21 Shutdown | 26 Casing Test | 31 Prime Lines |
| ② Pre-Convoy Safety Meeting | ⑦ Pre-Rig Up Safety Meeting | ⑫ Start Job | ⑰ Pump Water Spacer | 22 Drop Top Plug | 27 Check Floats | 32 Check weight |
| ③ Crew Leave Yard | ⑧ Rig-Up Equipment | ⑬ Prime Lines | ⑱ Check weight | 23 Pump Displacement | 28 Pump Down Parasite | 33 Pump Annul |
| ④ Arrive At Loc | ⑨ Meet With Company Rep | ⑭ Test Lines | ⑲ Pump Lead Cement | 24 Slow Rate | 29 End Job | 34 Shutdown |
| ⑤ Assessment Of Location Safety Meeting | ⑩ Water Test | ⑮ Pump Water Spacer | 20 Pump Tail Cement | 25 Bump Plug | 30 Start Job | 35 Clean Lines |

▼ HALLIBURTON | iCem® Service

Created: 2015-12-29 21:40:07, Version: 4.2.393

Edit

Customer : CAERUS OIL AND GAS LLC - EBUS

Job Date : 12/30/2015 2:41:17 AM

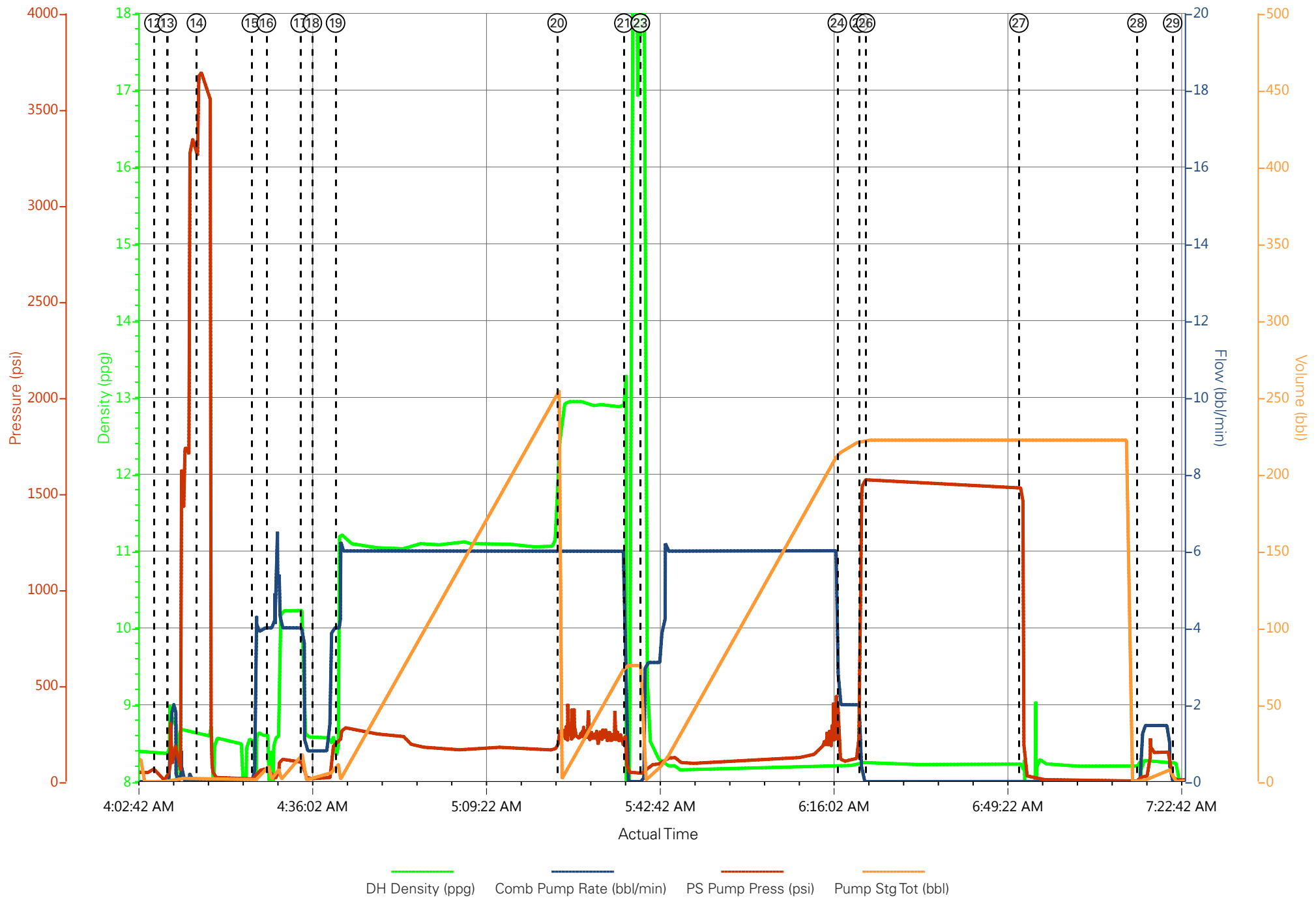
Well : PUCKETT 24A-1

Representative : WHITEY COTTAM

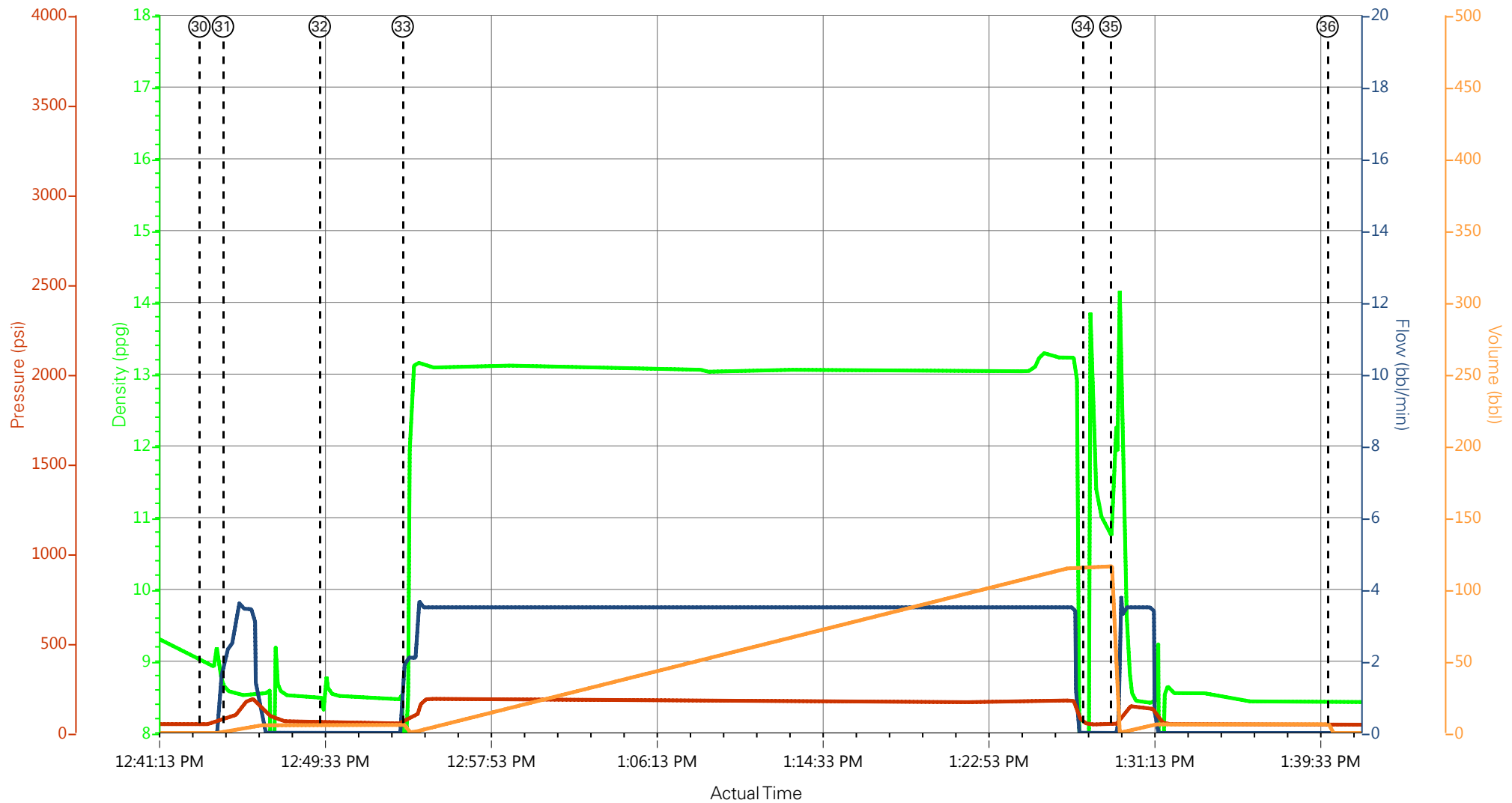
Sales Order # : 903018047

ELITE # 1 : WARDELL / CAMBELL

CAERUS PUCKETT 24A-1 SURFACE

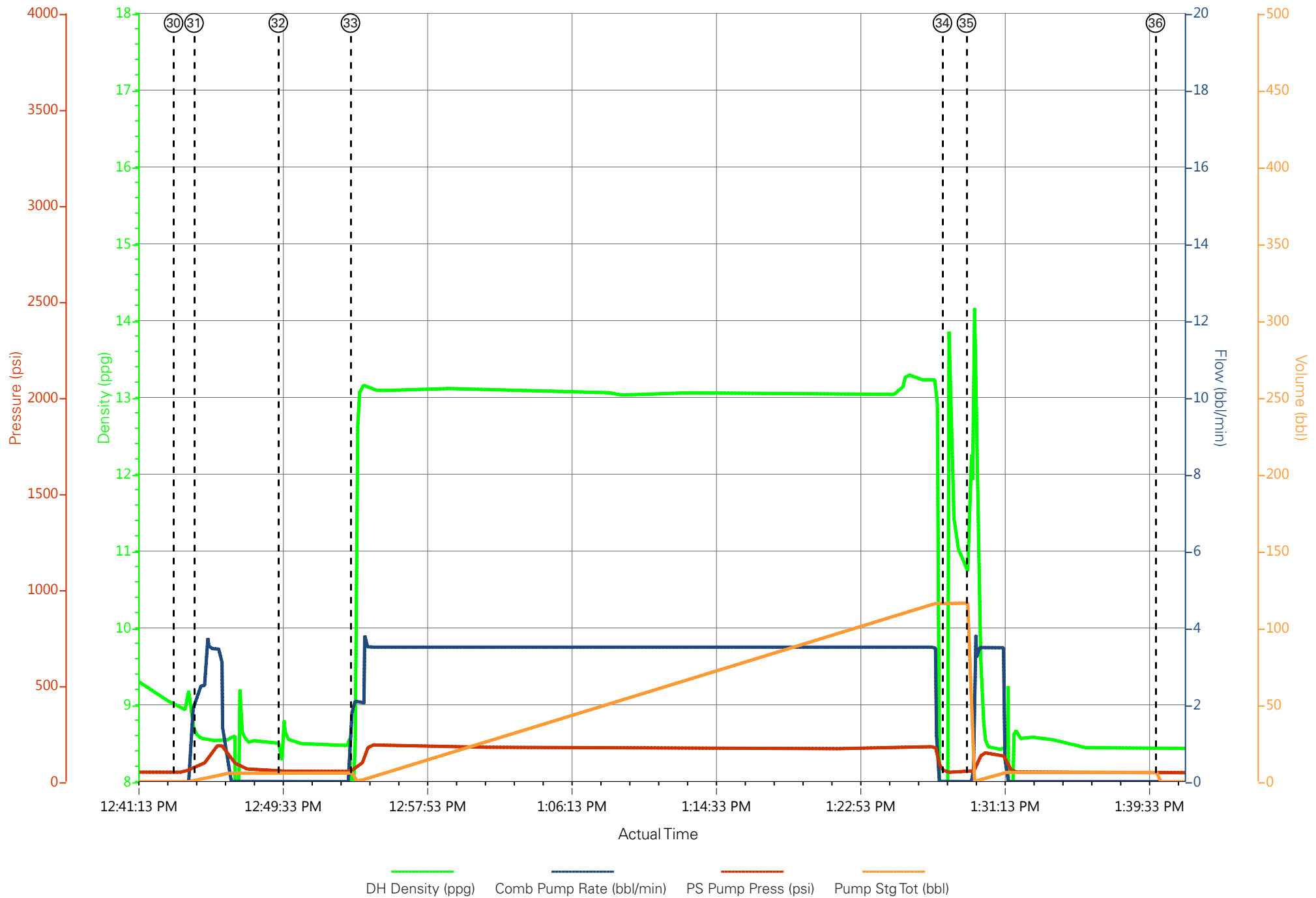


CAERUS PUCKETT 24A-1 SURFACE (ANNULAR FILL)

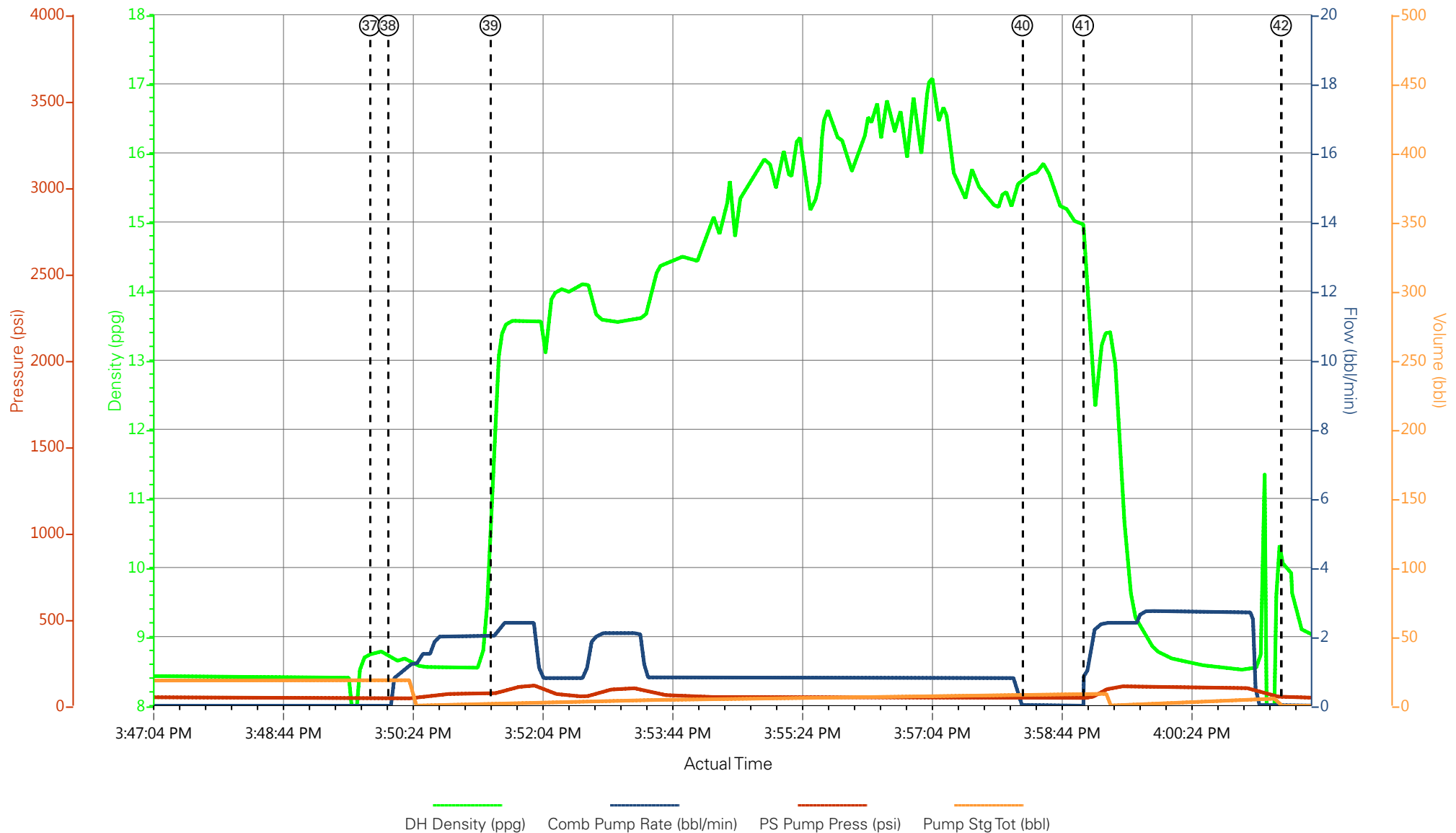


- | | | | | | | |
|-----------------------------------------|-----------------------------|--------------------------|---------------------------|----------------------|-----------------------|-----------------|
| ① Call Out | ⑥ Spot Equipment | ⑪ Pre-Job Safety Meeting | ⑯ Pump Super Flush Spacer | 21 Shutdown | 26 Casing Test | 31 Prime Lines |
| ② Pre-Convoy Safety Meeting | ⑦ Pre-Rig Up Safety Meeting | ⑫ Start Job | ⑰ Pump Water Spacer | 22 Drop Top Plug | 27 Check Floats | 32 Check weight |
| ③ Crew Leave Yard | ⑧ Rig-Up Equipment | ⑬ Prime Lines | ⑱ Check weight | 23 Pump Displacement | 28 Pump Down Parasite | 33 Pump Annul |
| ④ Arrive At Loc | ⑨ Meet With Company Rep | ⑭ Test Lines | ⑲ Pump Lead Cement | 24 Slow Rate | 29 End Job | 34 Shutdown |
| ⑤ Assessment Of Location Safety Meeting | ⑩ Water Test | ⑮ Pump Water Spacer | 20 Pump Tail Cement | 25 Bump Plug | 30 Start Job | 35 Clean Lines |

CAERUS PUCKETT 24A-1 SURFACE (ANNULAR FILL)



CAERUS PUCKETT 24A-1 SURFACE (TOP OUT)



① Call Out	⑥ Spot Equipment	⑪ Pre-Job Safety Meeting	⑯ Pump Super Flush Spacer	21 Shutdown	26 Casing Test	31 Prime Lines
② Pre-Convoy Safety Meeting	⑦ Pre-Rig Up Safety Meeting	⑫ Start Job	⑰ Pump Water Spacer	22 Drop Top Plug	27 Check Floats	32 Check weight
③ Crew Leave Yard	⑧ Rig-Up Equipment	⑬ Prime Lines	⑱ Check weight	23 Pump Displacement	28 Pump Down Parasite	33 Pump Annul
④ Arrive At Loc	⑨ Meet With Company Rep	⑭ Test Lines	⑲ Pump Lead Cement	24 Slow Rate	29 End Job	34 Shutdown
⑤ Assessment Of Location Safety Meeting	⑩ Water Test	⑮ Pump Water Spacer	20 Pump Tail Cement	25 Bump Plug	30 Start Job	35 Clean Lines

CAERUS PUCKETT 24A-1 SURFACE (TOP OUT)

