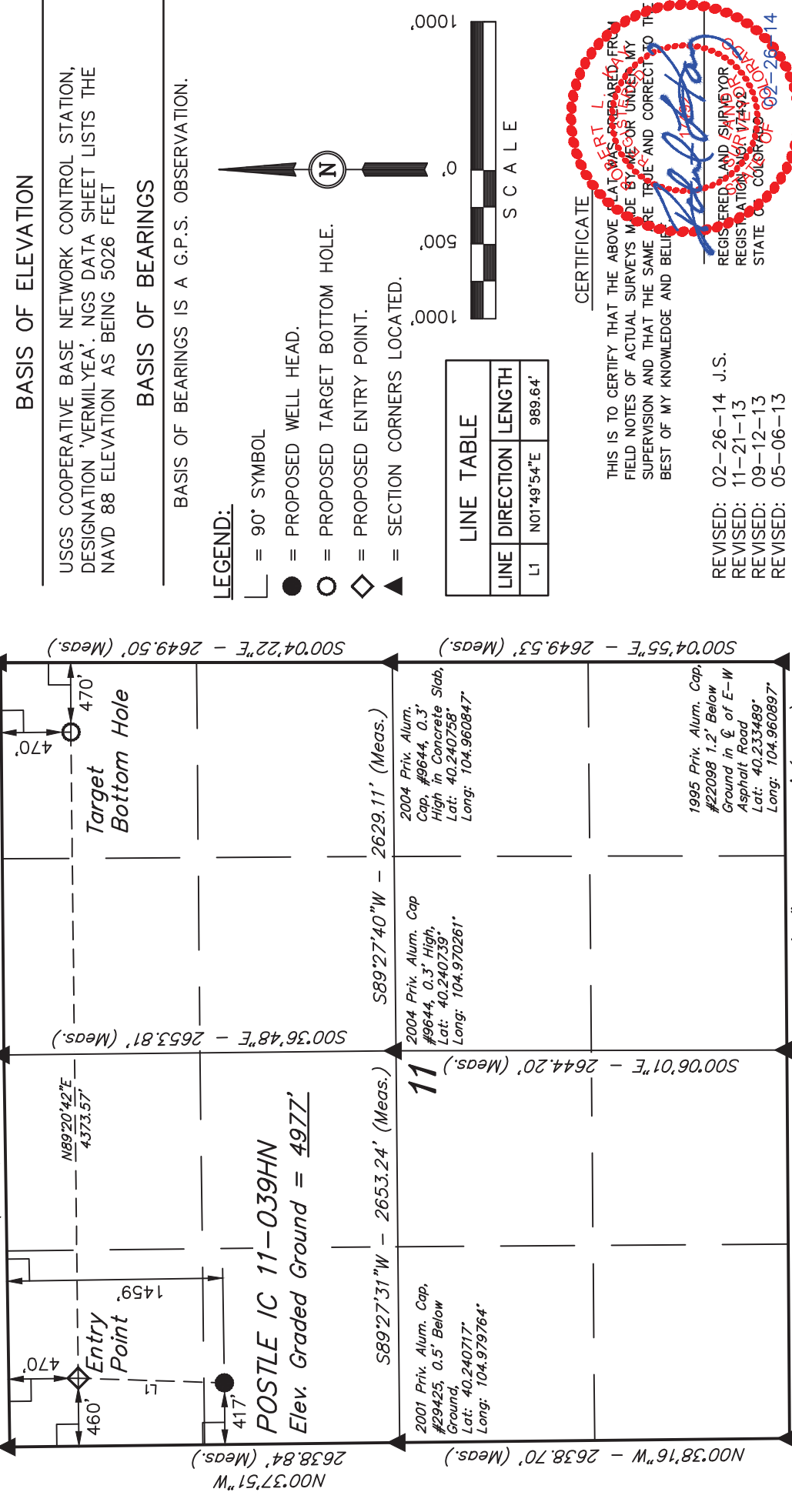


T3N, R68W, 6th P.M.
GREAT WESTERN OIL & GAS COMPANY

1996 Priv. Alum. Cap. #4392, 0.3' Below Ground in Monument Box in N-S Asphalt Frontage Road
Lat: 40.247958° Long: 104.979806°
2012 Priv. Alum. Cap. #28285 0.5' Below Ground, Lat: 40.248022° Long: 104.970303°
N89°08'07"E 2654.07' (Meas.)
N89°33'22"E 2654.12' (Meas.)
Priv. Alum. Cap. #2209 0.8' Below Ground in Gravel Road E-W, Lat: 40.248031° Long: 104.960797°



BASIS OF ELEVATION

USGS COOPERATIVE BASE NETWORK CONTROL STATION, DESIGNATION 'VERMILYEA'. NGS DATA SHEET LISTS THE NAVD 88 ELEVATION AS BEING 5026 FEET

BASIS OF BEARINGS

BASIS OF BEARINGS IS A G.P.S. OBSERVATION.

LEGEND:

- = 90° SYMBOL
- = PROPOSED WELL HEAD.
- = PROPOSED TARGET BOTTOM HOLE.
- ◇ = PROPOSED ENTRY POINT.
- ▲ = SECTION CORNERS LOCATED.

LINE TABLE		
LINE	DIRECTION	LENGTH
L1	N01°49'54"E	989.64'



REVISED: 02-26-14 J.S.
REVISED: 11-21-13
REVISED: 09-12-13
REVISED: 05-06-13

UNTAH ENGINEERING & LAND SURVEYING
85 SOUTH 200 EAST - VERNAL, UTAH 84078
(435) 789-1017

SCALE 1" = 1000'	DATE SURVEYED: 04-19-13	DATE DRAWN: 04-22-13
PARTY DALLAS NIELSEN G.W. J.W.	REFERENCES G.L.O. PLAT	
WEATHER COOL	FILE GREAT WESTERN OIL & GAS COMPANY	

PDOP = 1.4			
NAD 83 (TARGET BOTTOM HOLE)	NAD 83 (ENTRY POINT)	NAD 83 (SURFACE LOCATION)	
LATITUDE = 40°14'48.26" (40.246739) LONGITUDE = 104°57'44.96" (104.962489)	LATITUDE = 40°14'48.05" (40.246681) LONGITUDE = 104°58'41.35" (104.978153)	LATITUDE = 40°14'38.28" (40.243967) LONGITUDE = 104°58'41.84" (104.978289)	
NAD 27 (TARGET BOTTOM HOLE)	NAD 27 (ENTRY POINT)	NAD 27 (SURFACE LOCATION)	
LATITUDE = 40°14'48.32" (40.246756) LONGITUDE = 104°57'43.04" (104.961956)	LATITUDE = 40°14'48.10" (40.246694) LONGITUDE = 104°58'39.43" (104.977619)	LATITUDE = 40°14'38.33" (40.243981) LONGITUDE = 104°58'39.92" (104.977756)	