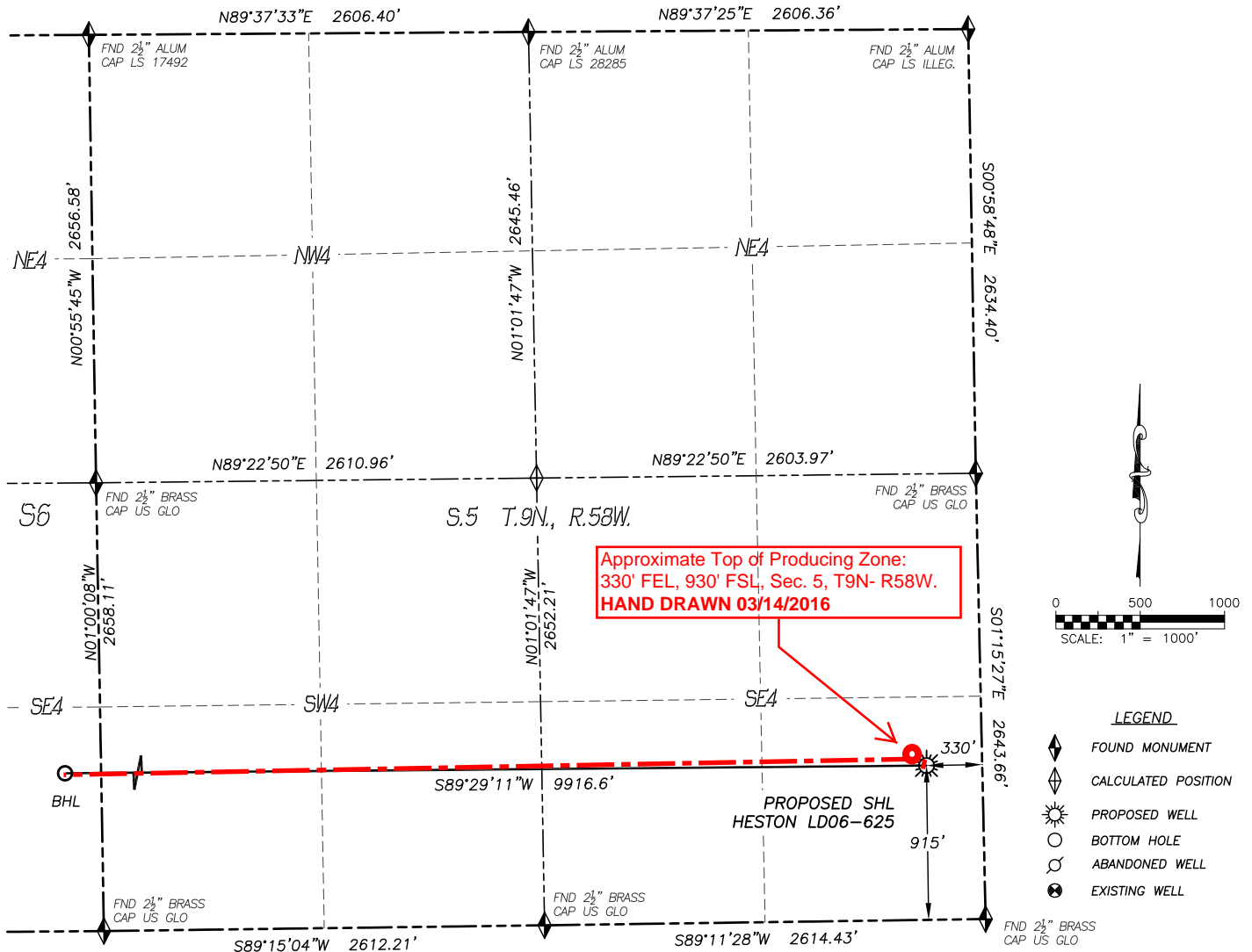


# WELL LOCATION CERTIFICATE

## HESTON LD06-625

SECTION: 5  
TOWNSHIP: 9N  
RANGE: 58W  
SE4/SE4



IN ACCORDANCE WITH A REQUEST FROM BRIAN JAMES OF NOBLE ENERGY INC., DALEY LAND SURVEYING, INC. HAS DETERMINED THE SURFACE LOCATION OF THE HESTON LD06-625 WELL TO BE 915' FSL, 330' FEL, AS MEASURED AT NINETY (90) DEGREES FROM THE SECTION LINES OF SECTION 5, TOWNSHIP 9 NORTH, RANGE 58 WEST, AND THE BOTTOM HOLE LOCATION TO BE 930' FSL, 330' FWL, AS MEASURED AT NINETY (90) DEGREES FROM THE SECTION LINES OF SECTION 6, TOWNSHIP 9 NORTH, RANGE 58 WEST OF THE 6TH PRINCIPAL MERIDIAN, WELD COUNTY, COLORADO.

I HEREBY STATE THAT THIS WELL LOCATION CERTIFICATE WAS PREPARED BY ME OR UNDER MY DIRECT SUPERVISION, THAT THE WORK WAS COMPLETED ON 2/22/2014 FOR AND ON BEHALF OF NOBLE ENERGY, INC., AND THAT THIS MAP DOES NOT REPRESENT A BOUNDARY SURVEY, IT IS NOT A LAND SURVEY PLAT OR AN IMPROVEMENT SURVEY PLAT AND IT IS NOT TO BE RELIED UPON FOR THE ESTABLISHMENT OF FENCE, BUILDING OR OTHER FUTURE IMPROVEMENT LINES.

### NOTES:

- 1) BEARINGS FOR THIS MAP ARE ASSUMED AND BASED UPON GPS OBSERVATIONS MADE BETWEEN MONUMENTS LOCATED AT THE NORTHEAST CORNER AND EAST QUARTER CORNER OF SECTION 5, T.9N., R.58W.
- 2) HORIZONTAL DATUM IS NAD83.
- 3) VERTICAL DATUM IS NAVD88 AND ORIGINATES FROM THE LOCAL C.O.R.S. NETWORK, UTILIZING THE GEOID12A MODEL.
- 4) SEE LOCATION DRAWING FOR VISIBLE IMPROVEMENTS WITHIN 500' OF PROPOSED DISTURBED AREA.
- 5) SURFACE USE: RANGELAND.
- 6) INST. OPERATOR: TREVOR DALEY.
- 7) NEAREST WELL: THERE ARE NO WELLS IN THIS SECTION.

### NEAREST CULTURAL ITEMS:

- |                                |          |
|--------------------------------|----------|
| 1) BUILDING:                   | 5280'+   |
| 2) BUILDING UNIT:              | 5280'+   |
| 3) HIGH OCC. BLD. UNIT:        | 5280'+   |
| 4) DES. OUTSIDE ACTIVITY AREA: | 5280'+   |
| 5) PUBLIC ROAD:                | 4355'± N |
| 6) ABOVE GROUND UTILITY:       | 5280'+   |
| 7) RAILROAD:                   | 5280'+   |
| 8) PROPERTY LINE:              | 330'± E  |

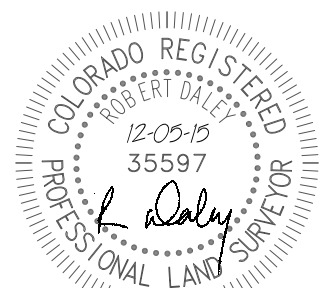
### NAD 83 LATITUDE AND LONGITUDE

#### SURFACE LOCATION:

LATITUDE: N40.77565°  
LONGITUDE: W103.88020°  
PDOP: 1.4  
ELEV: 4801'  
QTR/QTR: SE4/SE4

#### BOTTOM HOLE:

LATITUDE: N40.77548°  
LONGITUDE: W103.91599°



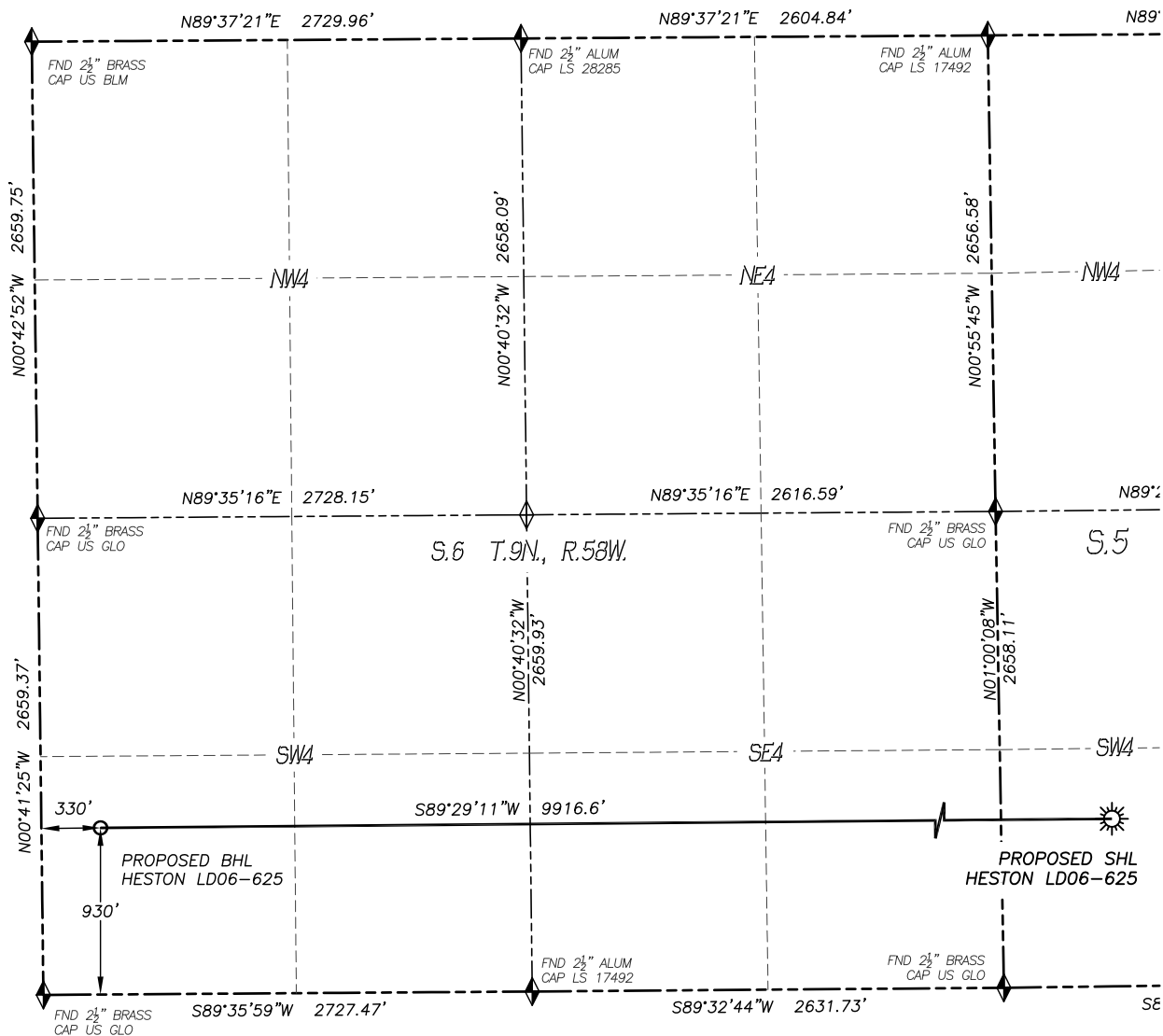
FOR AND ON BEHALF OF  
DALEY LAND SURVEYING INC.,  
Robert Daley, PLS 35597

SHEET 1 OF 2

# WELL LOCATION CERTIFICATE

## HESTON LD06-625

SECTION: 5  
TOWNSHIP: 9N  
RANGE: 58W  
SE4/SE4



### LEGEND

- FOUND MONUMENT
- CALCULATED POSITION
- PROPOSED WELL
- BOTTOM HOLE
- ABANDONED WELL
- EXISTING WELL

